

DRAWINGS PREPARED FOR:

**WILLIAMS SCOTSMAN**

4911 ALLISON PARKWAY  
VACAVILLE, CA 95688  
PHONE: 707-451-3000 / FAX: 707-451-4000

JOB #:  
**30300**

SERIAL #  
**SCI-00537**

BUILDING SIZE:  
**48' x 60'**

SHEET INDEX	
COVER PAGE	
SHEET NO: A1	FLOOR PLAN
CONSTRUCTION NOTES	
GENERAL NOTES	
FINISH SCHEDULE	
DOOR SCHEDULE	
WINDOW SCHEDULE	
STATE APPROVAL	
SHEET NO: A2	REFLECTED CEILING PLAN
REFLECTED CEILING DETAILS	
SHEET NO: A3	EXTERIOR ELEVATIONS
EXTERIOR PAINT SCHEDULE	
SHEET NO: E1	ELECTRICAL PLAN
ELECTRICAL SCHEDULE	
ELECTRICAL PANELS	
SHEET NO: M1	MECHANICAL SCHEDULES
MECHANICAL PLAN	
SHEET NO: P1	PLUMBING PLAN
PLUMBING SCHEDULE	
PLUMBING ISOMETRIC	
PLUMBING DETAILS	
SHEET NO: S1	SOLAR TUBE INSTALLATION DETAIL

**CUSTOMER PLAN APPROVAL**  
THESE DRAWINGS ILLUSTRATE HOW THE BUILDING WILL BE CONSTRUCTED. THOROUGHLY REVIEW PLANS BEFORE AFFIXING YOUR SIGNATURE IN THE SPACE PROVIDED. IF THERE IS A DISCREPANCY BETWEEN THE PLANS AND THE SPECIFICATIONS (IF ANY) THE PLANS WILL TAKE PRECEDENCE. YOUR SIGNATURE INDICATES ACCEPTANCE OF THIS DESIGN AS ILLUSTRATED.  
APPROVED AS NOTED:  
☐ \* NO EXCEPTIONS TAKEN.  
☐ \* APPROVED WITH MODIFICATIONS:  
☐ \* REVISE & RE-SUBMIT:  
SIGNATURE: \_\_\_\_\_  
DATE: \_\_\_\_\_  
CHANGES MAY RESULT IN A DELAY TO ORIGINAL SCHEDULE.

**SILVER CREEK**  
"BUILDING FOR THE NEXT GENERATION"  
195 E. MORGAN ST  
PERRIS, CA 92571  
PH: 951-943-5393  
FAX: 951-940-9232

WILLIAMS SCOTSMAN  
4911 ALLISON PARKWAY  
VACAVILLE, CA 95688  
PHONE: 707-451-3000  
FAX: 707-451-4000

HOWARD DUNN

PROJECT NAME:  
**48' x 60'**  
**(STOCKTON-MAIN ADMIN BLDG)**

SHEET TITLE:  
**COVER PAGE**

REVISIONS:	
BY:	DATE:

JOB #: **30300**

SERIAL #: **SCI-00537**

QUOTE #: **2011-07-011A R2**

DATE: **02-NOV-11**

DRAWN BY: **A.F.**  
SCI. SALES RE: **JOSH DEAN**

SHEET NO.  
**CP**

PRELIMINARY-NOT FOR CONSTRUCTION (11/02/11)

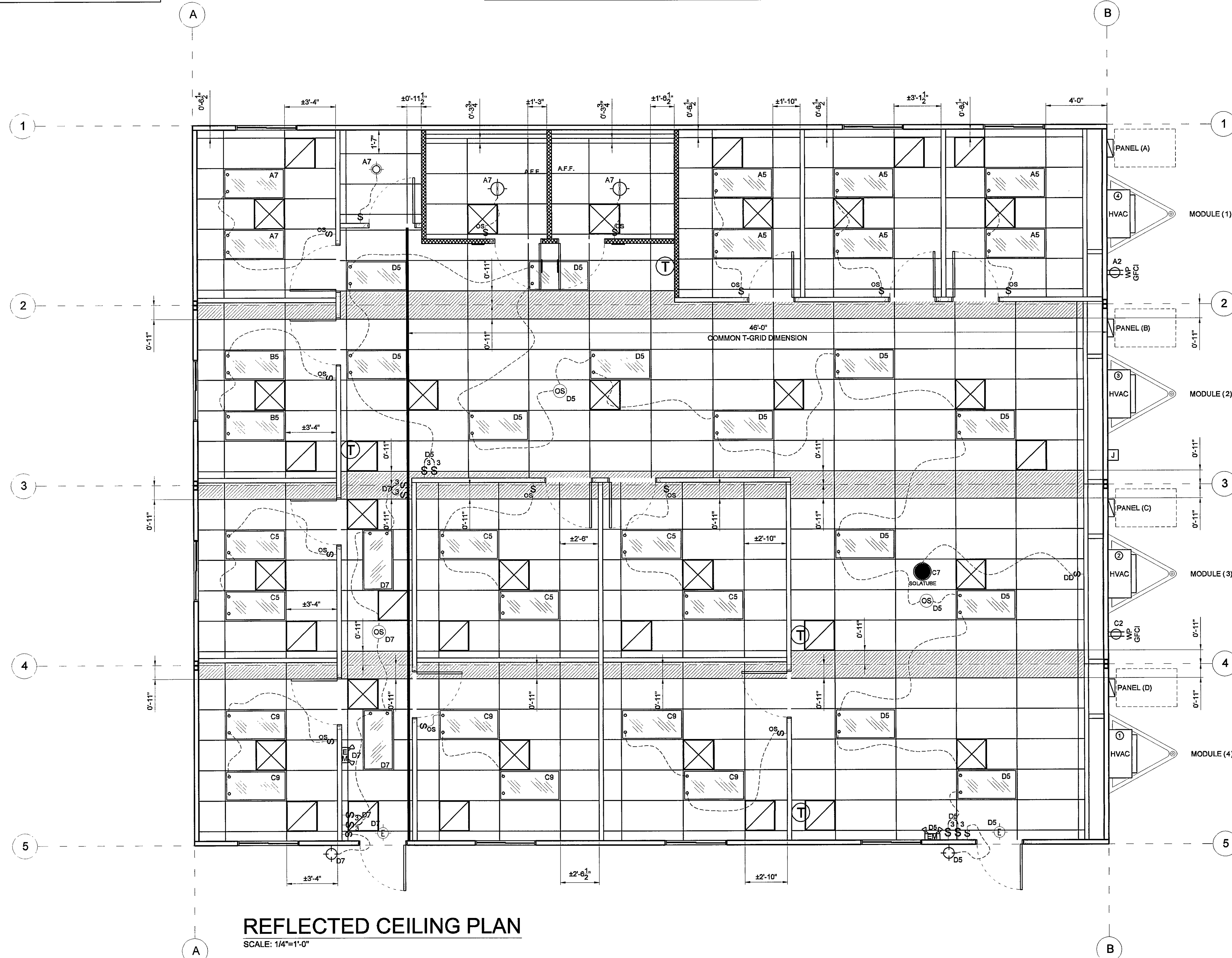


## NOTE:

HATCHING DENOTES SHIP LOOSE T-GRID & TILES FOR SITE INSTALLATION BY OTHERS (NOT S.C.I.)

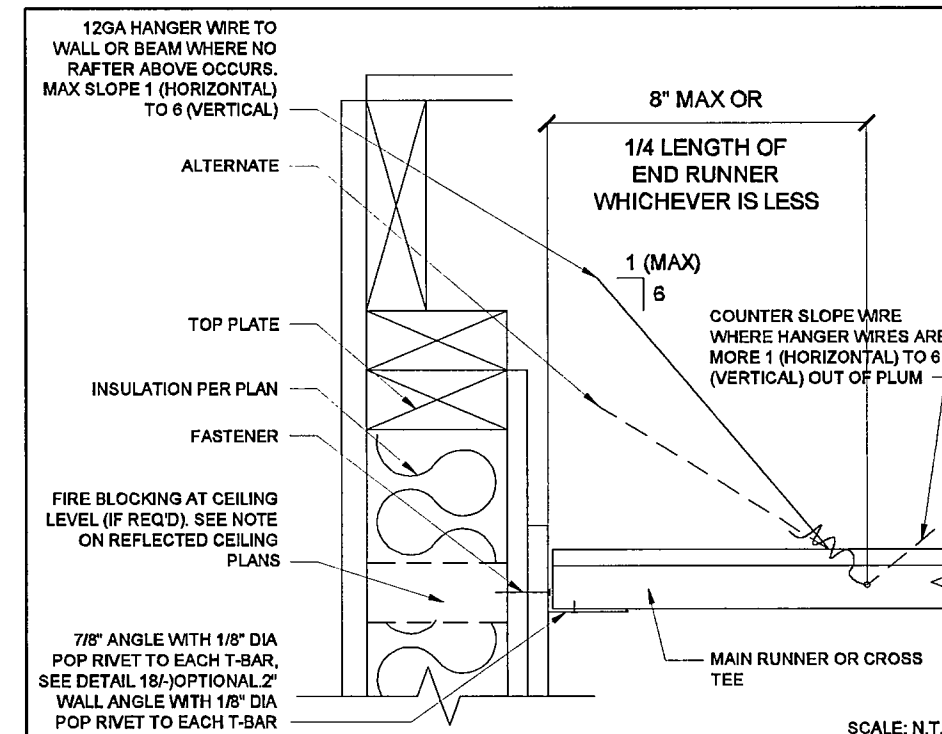
NOTE: ADJUSTMENT OF LIGHTS SENSOR CONTROLS "WHEN PROVIDED" IS BY OTHERS ON SITE (NOT S.C.I.)

NOTE: T-GRID CEILING TO BE ROOM TO ROOM

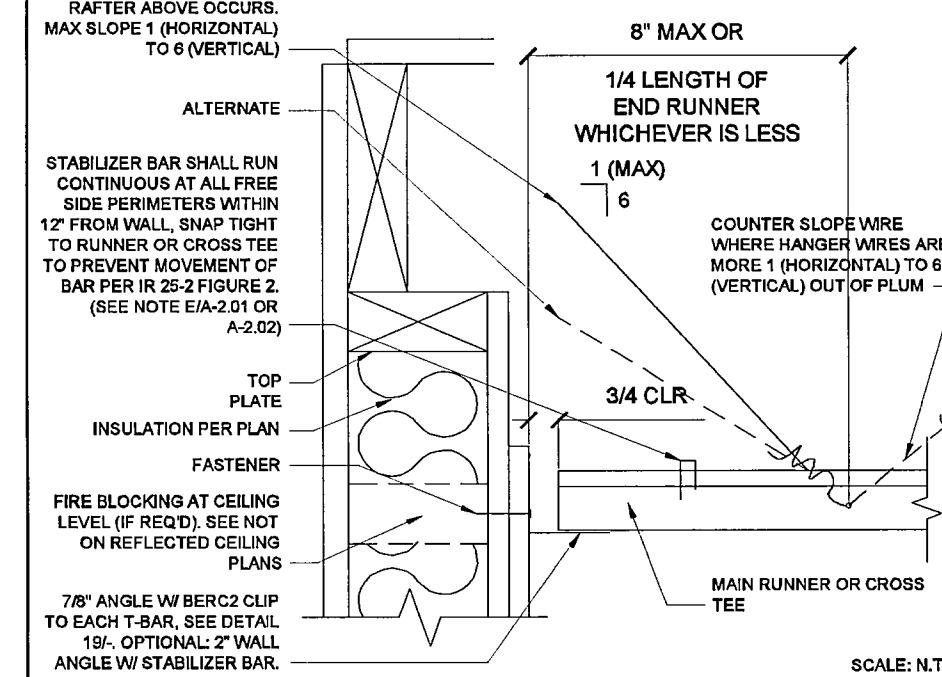


## REFLECTED CEILING PLAN

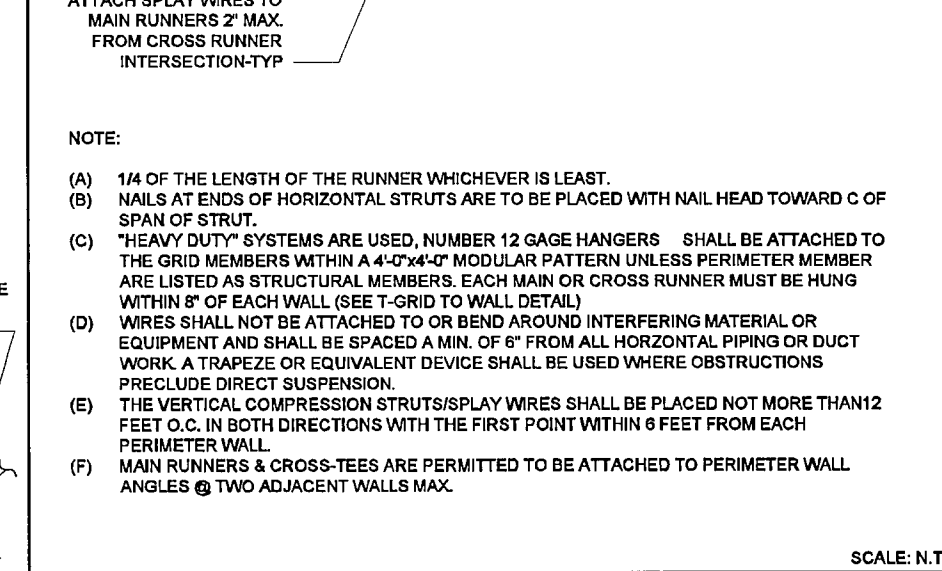
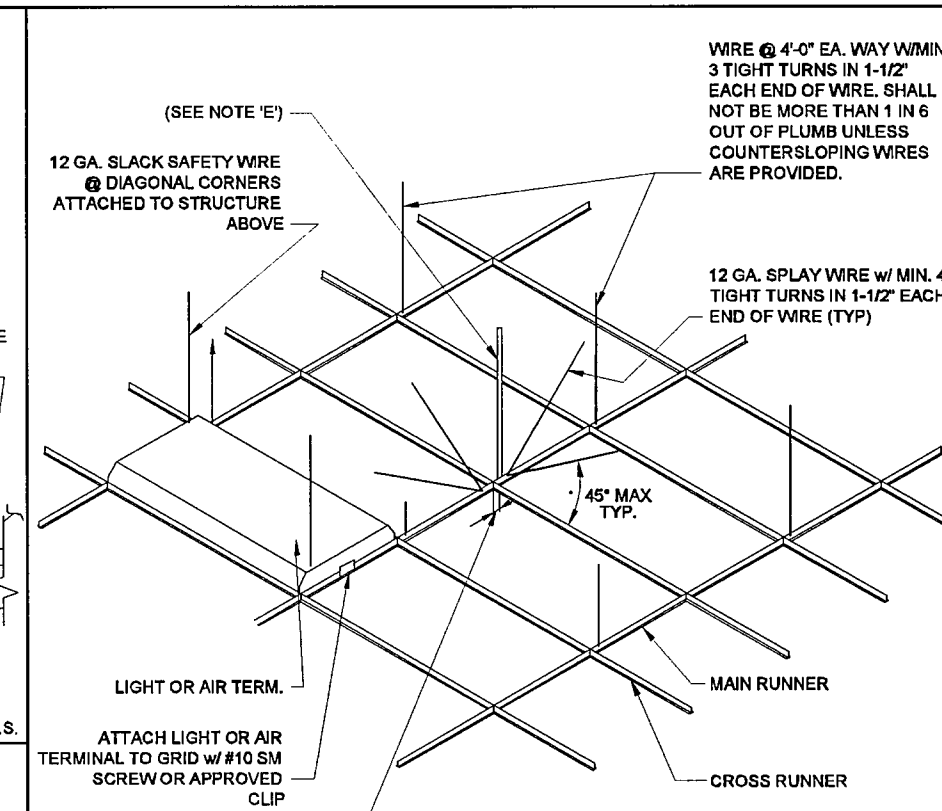
SCALE: 1/4"=1'-0"



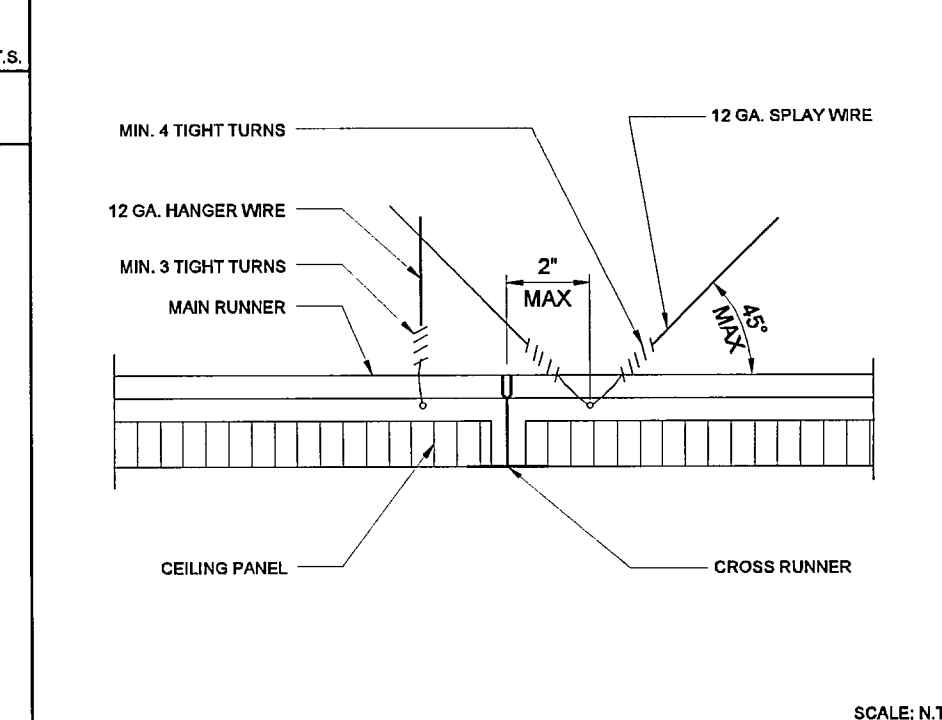
## E FIXED SIDE (ENDWALL)



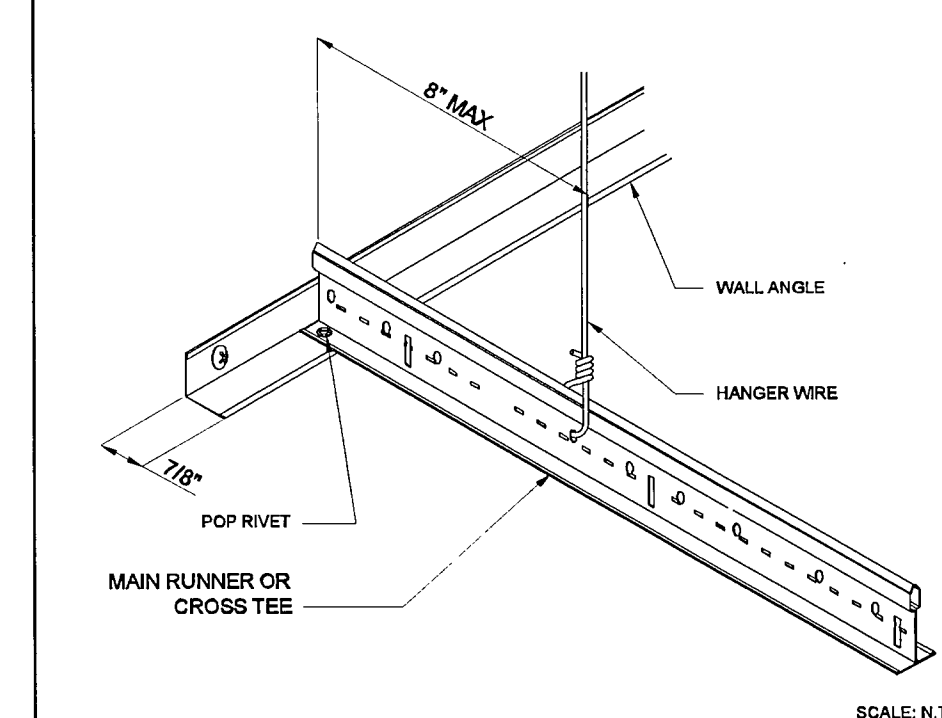
## F FREE SIDE (ENDWALL)



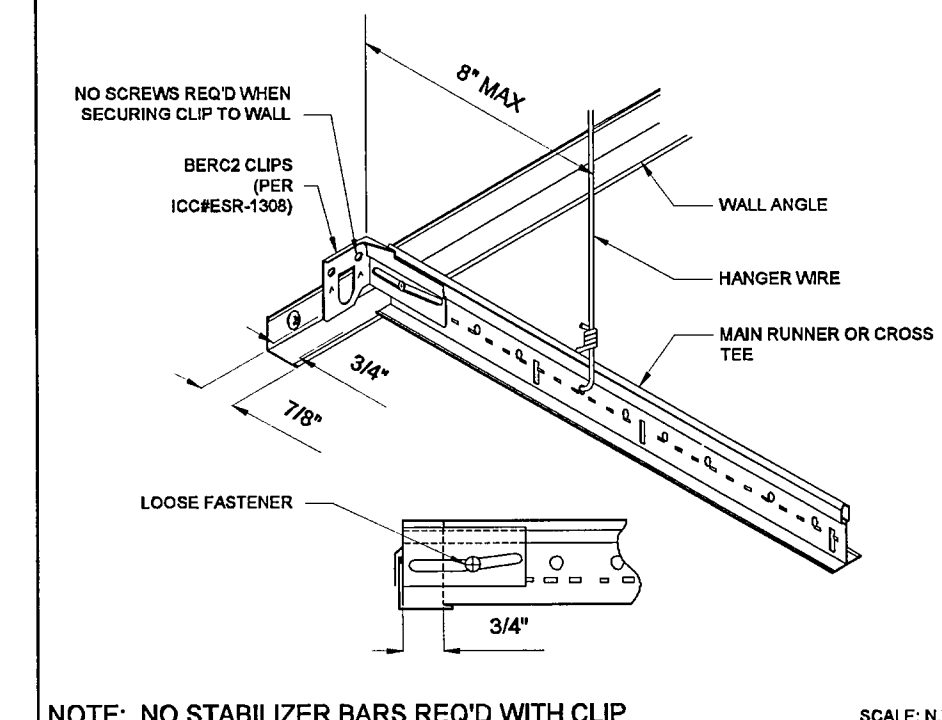
## A CEILING SUPPORT DETAIL



## B HANGER WIRE TO T-GRID DETAIL



## C FIXED SIDE WITH 7/8" ANGLE



## D FREE SIDE WITH 7/8" ANGLE

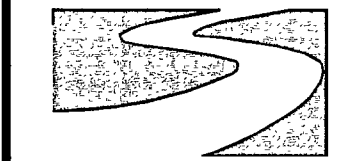
## CUSTOMER PLAN APPROVAL

THESE DRAWINGS ILLUSTRATE HOW THE BUILDING WILL BE CONSTRUCTED. THOROUGHLY REVIEW PLANS BEFORE AFFIXING YOUR SIGNATURE IN THE SPACE PROVIDED. IF THERE IS A DISCREPANCY BETWEEN THE PLANS AND THE SPECIFICATIONS (IF ANY) THE PLANS WILL TAKE PRECEDENCE. YOUR SIGNATURE INDICATES ACCEPTANCE OF THIS DESIGN AS ILLUSTRATED. APPROVED AS NOTED:

- \* NO EXCEPTIONS TAKEN
- \* APPROVED WITH MODIFICATIONS
- \* REVISE & RE-SUBMIT

SIGNATURE:

DATE: CHANGES MAY RESULT IN A DELAY TO ORIGINAL SCHEDULE



SILVER CREEK  
"BUILDING FOR THE NEXT GENERATION"  
195 E. MORGAN ST  
PERRIS, CA 92571  
PH: 951-943-5393  
FAX: 951-940-9232

WILLIAMS SCOTSMAN  
4911 ALLISON PARKWAY  
VACAVILLE, CA 95688  
PHONE: 707-451-3000  
FAX: 707-451-4000  
HOWARD DUNN

WILLIAMS  
SCOTSMAN

PROJECT NAME:  
48' x 60'  
(STOCKTON-MAIN ADMIN BLDG)  
SHEET TITLE:  
REFLECTED CEILING PLAN

REVISIONS:

BY:	DATE:

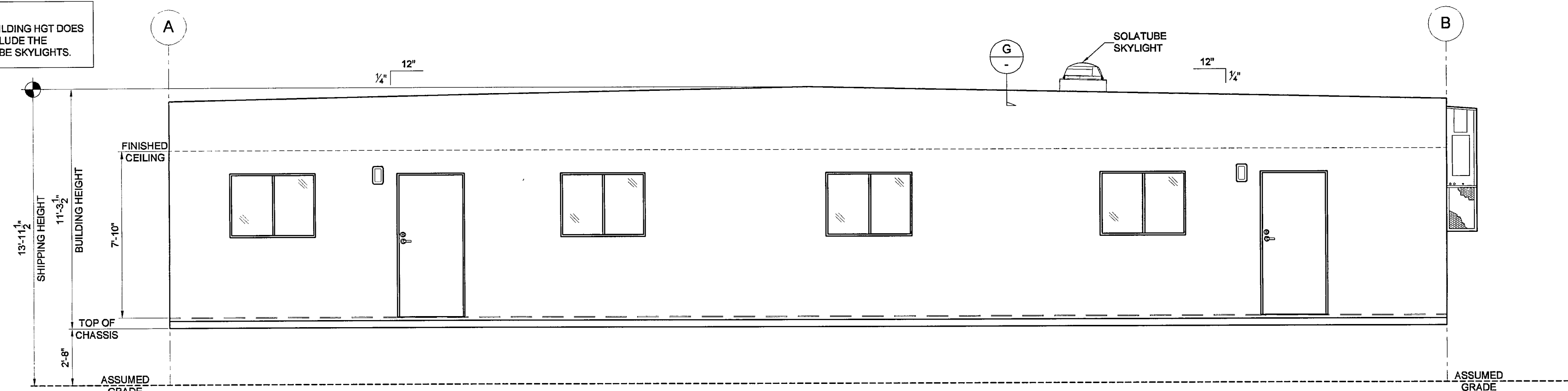
JOB #: 30300  
SERIAL #: SCI-00537  
QUOTE #: 2011-07-017A R2  
DATE: 02-NOV-11  
DRAWN BY: A.F.  
SCI. SALES RE: JOSH DEAN

SHEET NO.  
A2

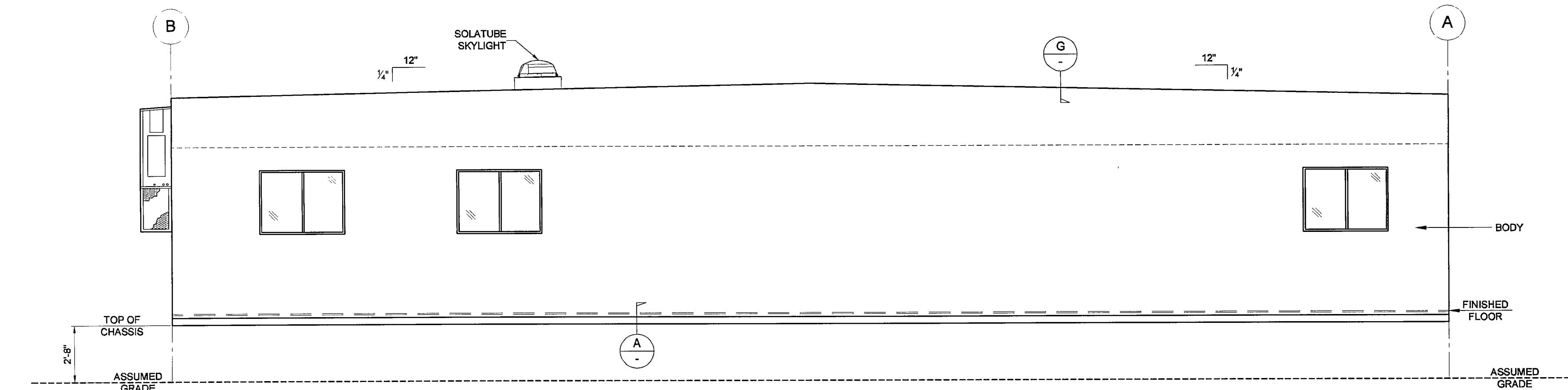
PRELIMINARY-NOT FOR CONSTRUCTION (11/02/11)



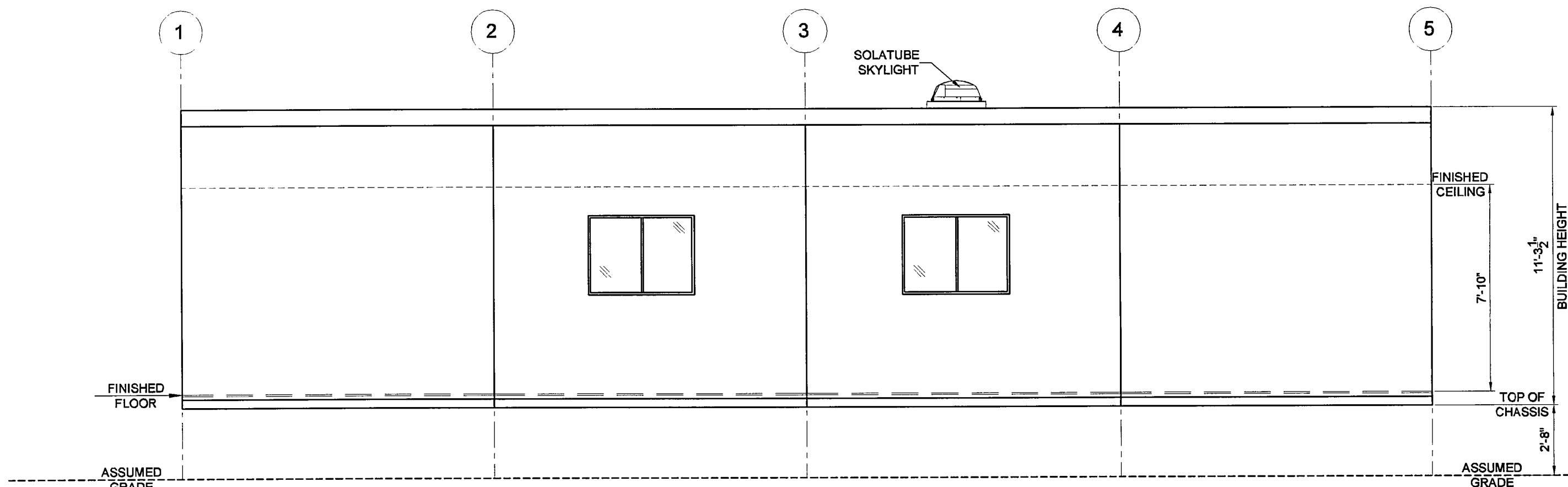
NOTE:  
THIS BUILDING HGT DOES  
NOT INCLUDE THE  
SOLATUBE SKYLIGHTS.



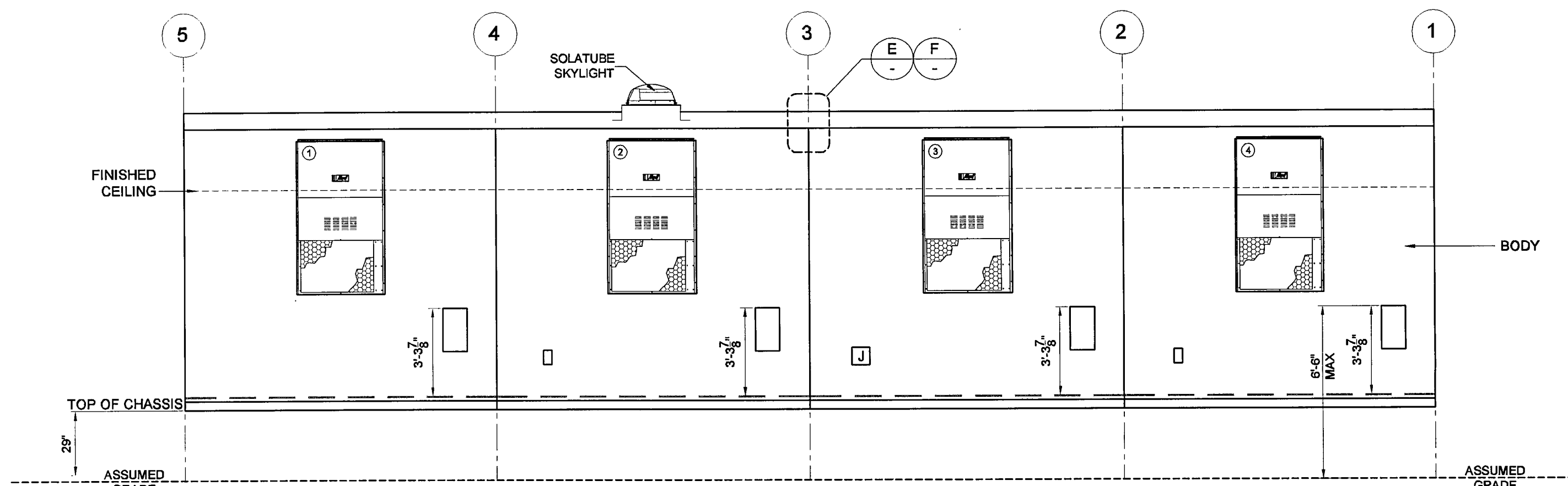
**ELEVATION "A"**  
SCALE: 1/4"=1'-0"



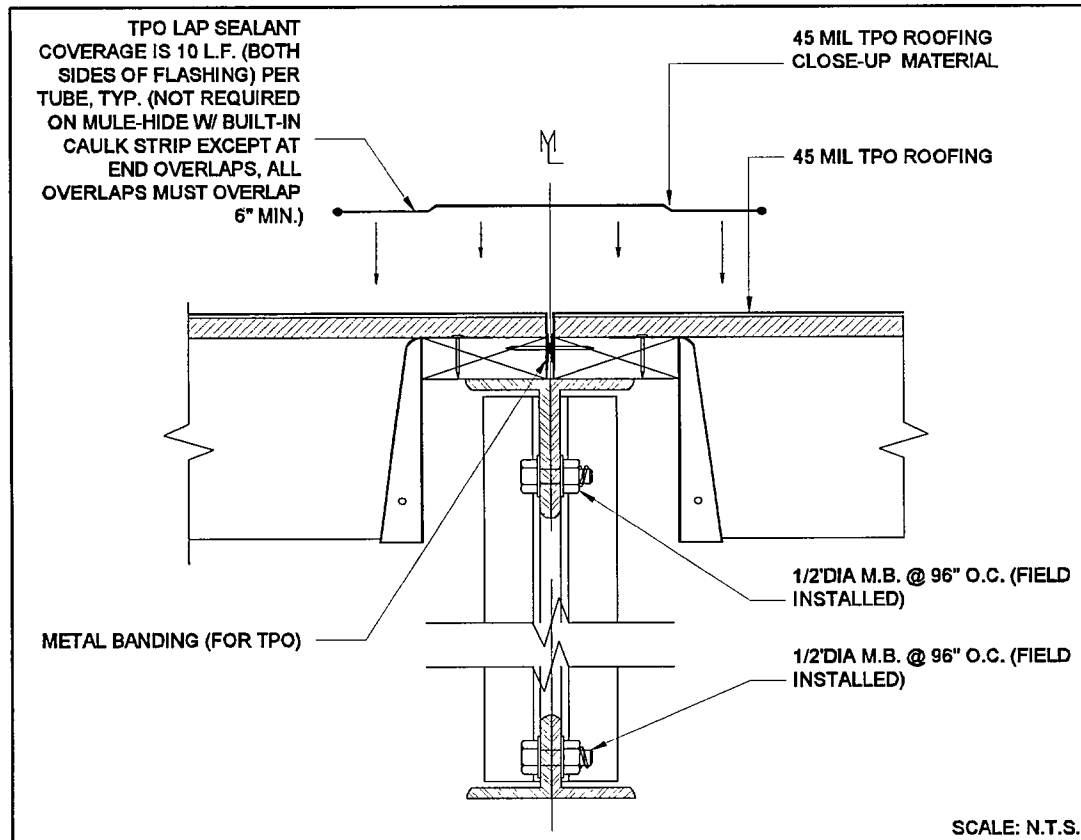
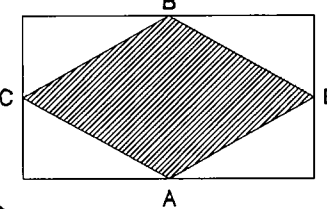
**ELEVATION "B"**  
SCALE: 1/4"=1'-0"



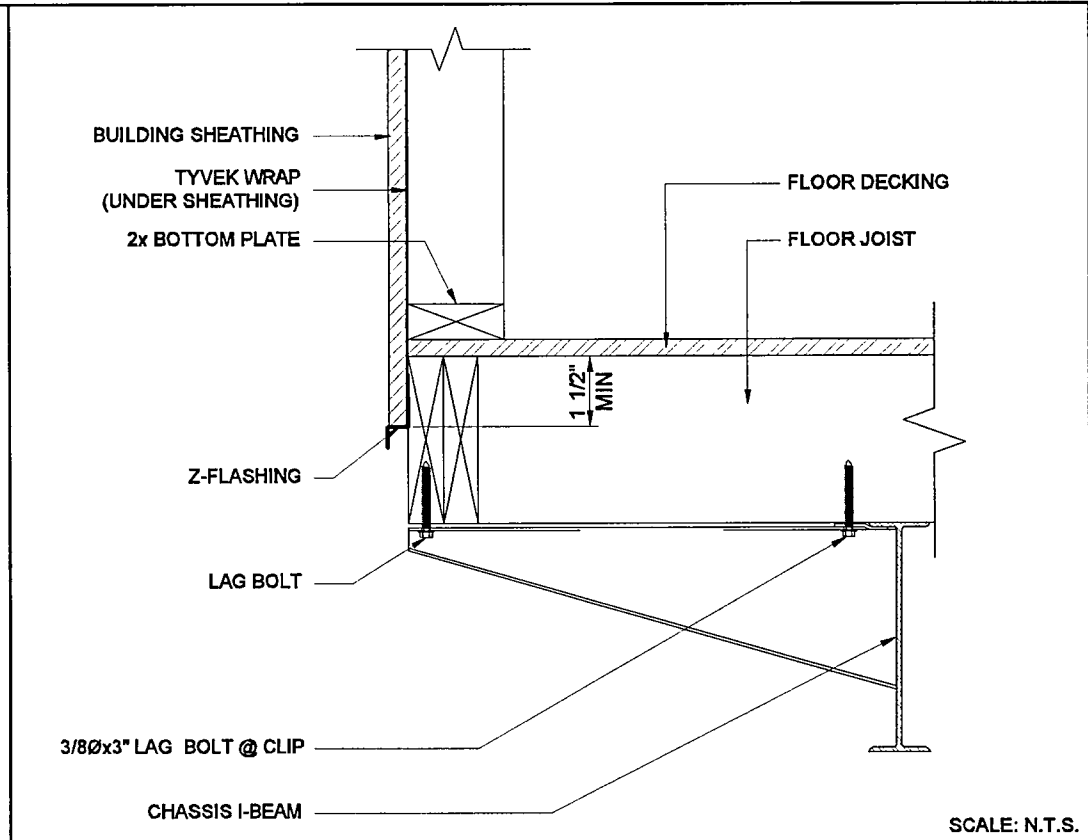
**ELEVATION "C"**  
SCALE: 1/4"=1'-0"



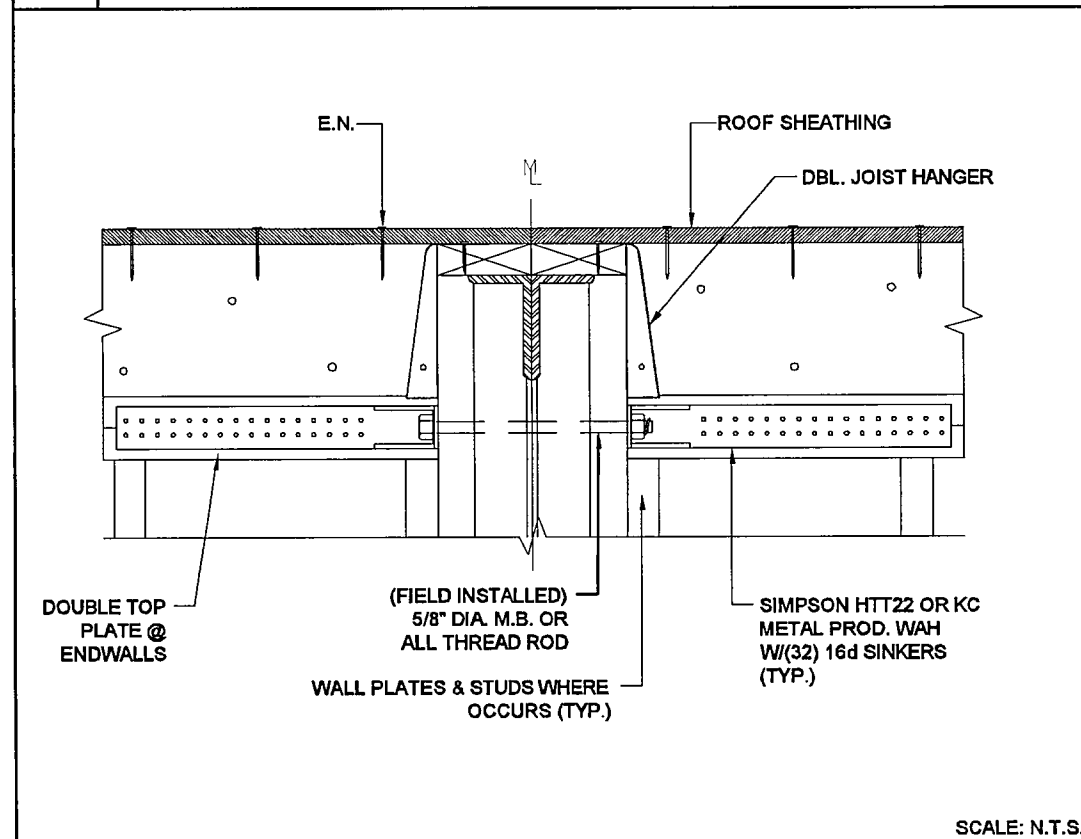
**ELEVATION "D"**  
SCALE: 1/4"=1'-0"



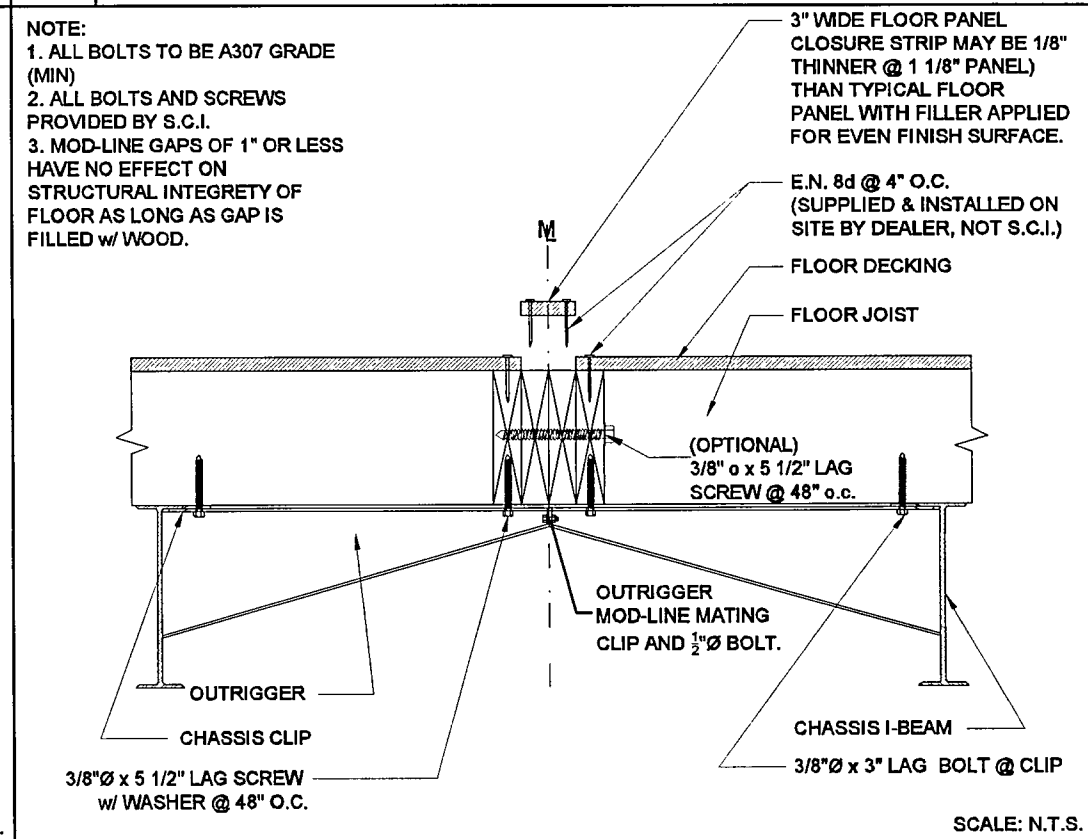
**E TPO ROOF CLOSE UP DETAIL (TRUSS)**



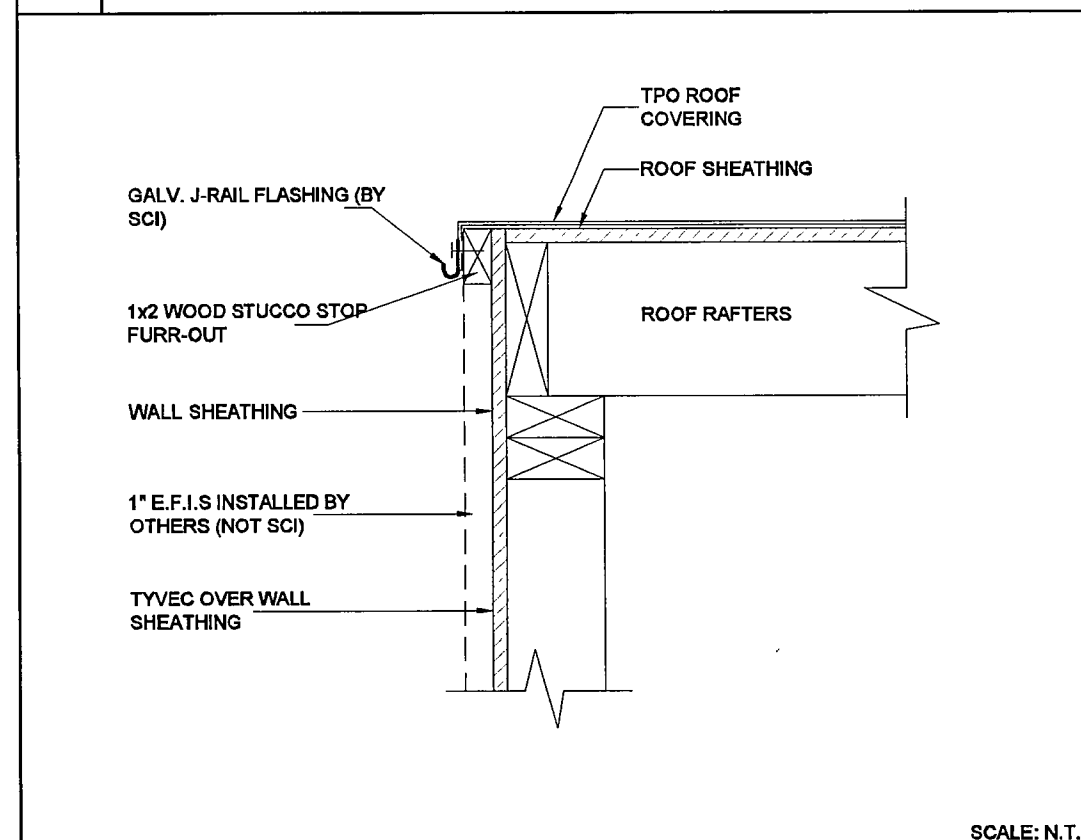
**A SIDING TO CHASSIS DETAIL**



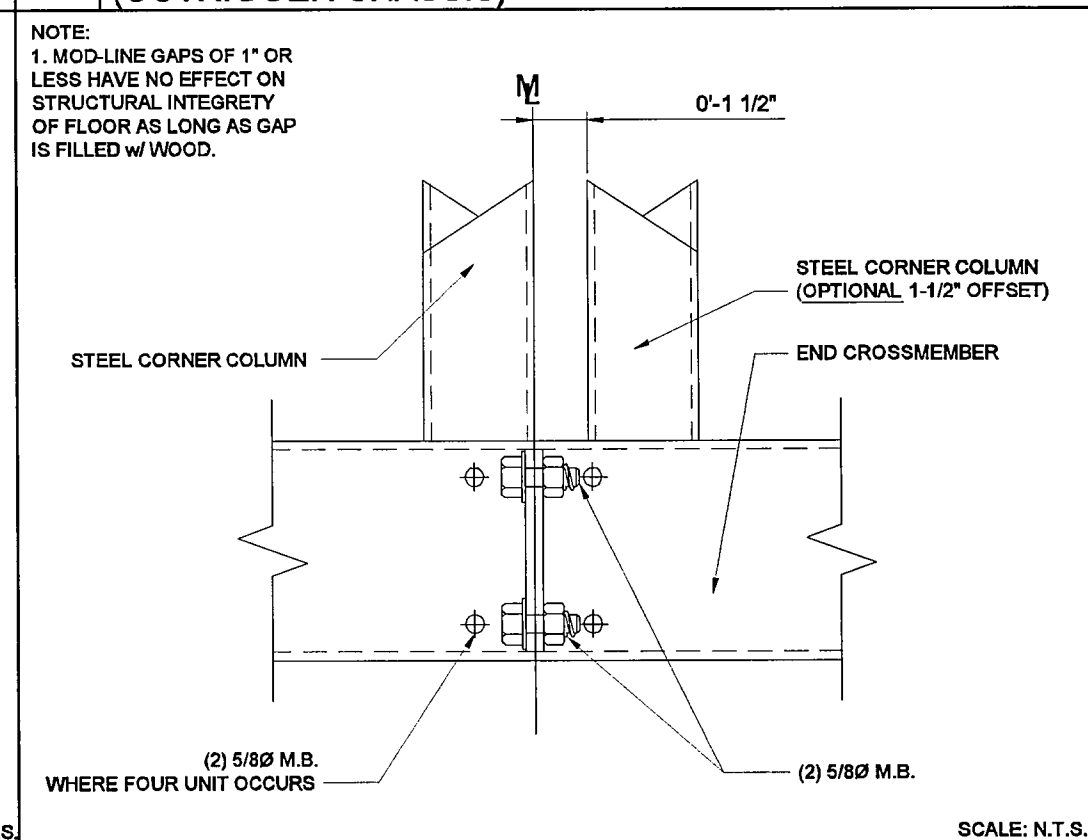
**F CHORD TIE DETAIL**



**B MOD-LINE FLOOR CONNECTION (OUTRIGGER CHASSIS)**



**G ROOF COVERING FURR-OUT**



**C MOD-LINE FLOOR CONNECTION (OUTRIGGER CHASSIS)**

FURR OUT ALL EXTERIOR ELECTRICAL DEVICES  
1" FOR FUTURE ON SITE STUCCO FINISH.

DEALER SIGNS INSTALLED

☐ YES ☐ NO

NOTE:  
ALL TEMPORARY WOOD TRUSS  
SUPPORT BLOCKING & SHIPPING  
SUPPORT WALLS TO BE REMOVED BY  
THE SET-UP CREW AT TIME OF SET-UP.

SHIPPING HEIGHT NOTE:  
SHIPPING HEIGHT DOES NOT INCLUDE  
PLUMBING VENTS AND ROOF CURBS,  
TRUCKING COMPANY TO VERIFY  
OVERALL HEIGHT PRIOR TO SHIPPING.

**(EXTERIOR BUILDING) PAINT SCHEDULE  
(STUCCO READY)**

BODY/HOOD:	N/A
VERTICAL CORNER TRIM:	N/A
VERTICAL MODLINE TRIM:	N/A
Z-BAR TRIM:	N/A
EXTERIOR WINDOW/DOOR TRIM:	N/A
TOP/BOTTOM HORIZ. TRIM:	N/A
GUTTER/DOWNSPOUTS:	N/A
CAULKING:	FACTORY STANDARD

CUSTOMER PLAN APPROVAL  
THESE DRAWINGS  
ILLUSTRATE HOW THE  
BUILDING WILL BE  
CONSTRUCTED.  
THOROUGHLY REVIEW PLANS  
BEFORE AFFIXING YOUR  
SIGNATURE IN THE SPACE  
PROVIDED. IF THERE IS A  
DISCREPANCY BETWEEN THE  
PLANS AND THE  
SPECIFICATIONS (IF ANY) THE  
PLANS WILL TAKE  
PRECEDENCE. YOUR  
SIGNATURE INDICATES  
ACCEPTANCE OF THIS DESIGN  
AS ILLUSTRATED.  
APPROVED AS NOTED:  
☐ \* NO EXCEPTIONS  
TAKEN;  
☐ \* APPROVED WITH  
MODIFICATIONS;  
☐ \* REVISE & RE-SUBMIT:  
SIGNATURE: \_\_\_\_\_  
DATE: \_\_\_\_\_  
CHANGES MAY RESULT IN A  
DELAY TO ORIGINAL  
SCHEDULE

**SILVER CREEK**  
"BUILDING FOR THE NEXT GENERATION"  
195 E. MORGAN ST  
PERRIS, CA 92571  
PH: 951-943-5393  
FAX: 951-940-9232

WILLIAMS SCOTSMAN  
4911 ALISON PARKWAY  
VACAVILLE, CA 95688  
PHONE: 707-451-3000  
FAX: 707-451-4000  
HOWARD DUNN

**WILLIAMS  
SCOTSMAN**

PROJECT NAME:  
**48' x 60'  
(STOCKTON-MAIN ADMIN BLDG)**  
SHEET TITLE:  
**EXTERIOR ELEVATIONS**

REVISIONS:  
BY: \_\_\_\_\_ DATE: \_\_\_\_\_  
JOB #: **30300**  
SERIAL #: **SCI-00537**  
QUOTE #: **2011-07-017A R2**  
DATE: **02-NOV-11**  
DRAWN BY: **A.F.**  
SCI. SALES RE: **JOSH DEAN**  
SHEET NO.  
**A3**

PRELIMINARY-NOT FOR CONSTRUCTION (11/02/11)

NOTE:  
ADJUSTMENT OF LIGHTS SENSOR CONTROLS "WHEN  
PROVIDED" IS BY OTHERS ON SITE (NOT S.C.I.)

FURR OUT ALL EXTERIOR ELECTRICAL DEVICES  
1" FOR FUTURE ON SITE STUCCO FINISH.

#### ELECTRICAL SYSTEM GENERAL NOTES

- 1) ELECTRICAL DISTRIBUTION PANELS MUST BE LOCATED WITH A MINIMUM OF 30" CLEAR HORIZONTAL WORKING SPACE IN FRONT.
- 2) ALL OF THE FOLLOWING TABLES AND DIAGRAMS ASSUME A 75°C RATED CONDUCTORS.
- 3) RECEPTACLES ADJACENT TO LAVATORIES AND IN AREAS OCCUPIED BY A TOILET, SHOWER, OR TUB MUST BE PROTECTED BY A G.F.C.I.
- 4) ALL OUTDOOR RECEPTACLES SHALL BE PROTECTED WITH A G.F.C.I. & WEATHER PROOF COVER.
- 5) METALLIC GAS, WATER, WASTE PIPES, AND DUCTS SHALL BE BONDED TO THE CHASSIS OR DISTRIBUTION PANEL.
- 6) THE CHASSIS SHALL BE BONDED TO THE ELECTRICAL DISTRIBUTION PANEL USING A SOLID OR STRANDED, INSULATED OR BARE #8 MINIMUM COPPER WIRE OR EQUAL. BONDING CONDUCTOR SHALL BE ATTACHED TO A PRESSURE-TERMINAL CONNECTOR APPROPRIATE FOR THE SIZE WIRE BEING USED.
- 7) METAL ROOFS WITHOUT METAL SIDING WHICH OVERLAP BOTH THE ROOF AND THE CHASSIS SHALL BE BONDED TO THE CHASSIS WITH TWO 4" WIDE GALVANIZED METAL STRAPS LOCATED ON OPPOSITE ENDS OF EACH MODULE. THE STRAPS SHALL BE OF EQUAL CONDUCTIVITY AND THICKNESS AS THE METAL ROOF. STRAPS SHALL BE CONNECTED TO THE CHASSIS WITH PANT PENETRATING FITTINGS SUCH AS SCREWS OR STAP WISHERS.
- 8) ALL APPLIANCES, DEVICES, EQUIPMENT, FITTINGS, AND MATERIALS SHALL BE LISTED AND LABELED BY AN APPROVED TESTING AGENCY AND SHALL BE INSTALLED AS PER THE LISTING AND MANUFACTURER'S INSTRUCTIONS.
- 9) ALL ELECTRICAL WORK TO BE TESTED IN ACCORDANCE WITH SILVER-CREEK'S QUALITY CONTROL MANUAL.
- 10) ALL CONDUCTORS SHALL BE PROTECTED FROM PHYSICAL DAMAGE AS REQUIRED IN SECTION 300-4 OF THE N.E.C.
- 11) ALL BOXES TO COMPLY WITH THE FILL REQUIREMENTS OF ARTICLE 314.16/TABLE 314.16A & 314.16B.
- 12) ALL CONDUIT SHALL COMPLY WITH THE FILL REQUIREMENTS OF TABLE 1, CHAPTER 9, AND ANNEX "C".
- 13) THE AMPACITY VALUES FOUND IN TABLE 310-16 MUST BE ADJUSTED BY ALL OF THE FOOTNOTE ADJUSTMENT FACTORS. WIRING IN CONDUIT MUST PARTICULARLY COMPLY WITH THE REQUIREMENTS FOOTNOTE 8.

#### ELECTRICAL SCHEDULE

SYMBOL	DESCRIPTION	CLR	QTY	REMARKS
	DUPLEX RECEPTACLE w/COVER PLATE @ 16" A.F.F. U.N.O. (NO BRAND SPECIFIED)	WHITE	41	
	GROUND FAULT CIRCUIT INTERRUPT RCPT. w/COVER PLATE @ 44" A.F.F. U.N.O. (NO BRAND SPECIFIED)	WHITE	2	
	HARD WIRED J-BOX FOR WATER HEATER. w/COVER PLATE. INSTALLED PER CODE. U.N.O. (NO BRAND SPECIFIED)	N/A	2	
	GFCI DUPLEX RCPT w/ WEATHER PROOF J-BOX & WATER PROOF WHILE IN USE COVER. INSTALLED PER CODE (NO BRAND SPECIFIED)	N/A	2	
	PORCH LIGHTS @ 88" A.F.F. U.N.O. BRAND: HARRIS #300	N/A	2	
	100 CFM FANLIGHT COMBO (NO BRAND SPECIFIED)	N/A	2	
	THERMOSTAT @ 48" A.F.F. TO TOP OF J-BOX SEE SHEET M1 FOR BRAND	N/A	4	
	2x4-3 J-BOX w/ 8" FLUORESCENT FIXTURE, RECESSED, DIFFUSED, DUAL ELECTRONIC BALLAST. (NO BRAND SPECIFIED)	N/A	36	A/B LIGHTING
	125 AMP 1 PHASE 120/240 w/ 125 AMP MAIN INSTALLED 5'-3" W/ 4" A.F.F. TO TOP OF PANEL, U.N.O. EXT. SURFACE (NBS)	N/A	4	
	2x4 J-BOX @ 18" A.F.F. w/ (3/4") CONDUIT STUBBED TO CEILING CAVITY	WHITE	13	FOR FUTURE PHONE DATA
	CEILING MOUNTED EXIT LIGHT w/ BATTERY BACK UP AND (RED) FACED LETTERS. U.N.O. (NO BRAND SPECIFIED)	N/A	2	
	WALL MOUNT EMERGENCY LIGHT MNTD @ 88" A.F.F. w/ BATTERY BACKUP. U.N.O. (NO BRAND SPECIFIED)	N/A	2	
	6x6x6 NEMA3R J-BOX SEMI-RECESSED MNTD @ 16" A.F.F. w/ (2) 3/4" CONDUIT STUBBED TO CEILING CAVITY. U.N.O. (NO BRAND SPECIFIED)	METAL	1	FOR FUTURE INLET. w/COVER PLATE
	10' ROUND DOME LIGHT w/ 75 WATT MAX LIGHT BULB. U.N.O. (NO BRAND SPECIFIED)	WHITE	1	IT ROOM ONLY
	WALL MNTD SWITCHED OCC. SENSOR w/ COVER PLATE @ 48" A.F.F. TO TOP OF J-BOX U.N.O. (DUAL TECH) (NO BRAND SPECIFIED)	WHITE	13	"1" SWITCHING IN RESTROOMS ONLY "2" & "4" X 7" IN RESTROOM ONLY
	(1) SINGLE POLE SWITCH w/ COVER PLATE @ 48" A.F.F. TO TOP OF J-BOX. U.N.O. (NO BRAND SPECIFIED)	WHITE	1	IT ROOM ONLY
	(2) THREE-WAY (1) SINGLE POLE SWITCH w/COVER PLATE @ 48" A.F.F. TO TOP OF J-BOX U.N.O. (NO BRAND SPECIFIED)	WHITE	2	A/B SWITCHING @ INT. LIGHTS ONLY
	(2) THREE-WAY SWITCHES w/ COVER PLATE @ 48" A.F.F. TO TOP OF J-BOX U.N.O. (NO BRAND SPECIFIED)	WHITE	2	A/B LIGHTING
	DAYLIGHT DIMMER SWITCH 5w DPDT MONETARY ROCKER, SNAP-IN w/ COVER PLATE @ 48" A.F.F. TO TOP OF J-BOX U.N.O. (NO BRAND SPECIFIED)	WHITE	1	FOR SOLATUBE CONTROL. ATTIC MOUNTED.
	CEILING MNTD DUAL TECHNOLOGY OCCUPANCY SENSOR w/ WALL MNTD SWITCHED OFF OVERIDE. (NO BRAND SPECIFIED)	N/A	3	A/B LIGHTING SEE PLAN FOR SWITCHED LOCATIONS
	4x4 J-BOX w/ SINGLE GANG RINGS HARDWIRED. INSTALLED PER CODE. U.N.O. (NO BRAND SPECIFIED)	N/A	2	110V

#### NOTE:

1. ALL MEASUREMENTS FOR DEVICES WHICH REQUIRE A HEIGHT ARE TO THE CENTER OF DEVICE UNLESS NOTED OTHERWISE.
2. ALL EXTERIOR ELECTRICAL DEVICES TO BE WEATHERPROOF.
3. FIRE ALARM SYSTEM PROVIDED AND INSTALLED ON SITE BY OTHERS. (WHEN APPLICABLE).

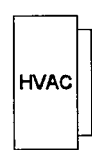
ELECTRICAL PANEL SCHEDULE "A"									
BUSS: 125a	SPACER: 12		VOLT: 120/240		PHASE: SINGLE		LOCATION: EXTERIOR		
MAIN 125a	FEED: XXX		THREE WIRE		MOUNTING: SURFACE				
LOAD DESCRIPTION	WATTS	BRK	WVS	DISC	WVS	DISC	WVS	DISC	LOAD DESCRIPTION
3 TON A/C w/ 10 KW HEAT STRIP	5,568	67	96	1	2	#12	20	1,440	(6) RECEPTS
(4) GEN LIGHTS	600	20	#12	5	4	#12	30	720	(4) RECEPTS
(2) GEN LITE (1) DOME LITE (2) GEN LITE	875	20	#12	7	8	#10	20	2,300	(1) HAND DRYER
SPACE			9						SPACE
SPACE			11						SPACE
"A" WATTS = 6,988 W					"B" WATTS = 8,480 W				
LCL = 3,192.75 W + 18,151 W = 21,303.75 W					TOTAL WATTS: 21,303.75 + 240				
					TOTAL AMPS: 68.76				

ELECTRICAL PANEL SCHEDULE "C"									
BUSS: 125a	SPACES: 12		VOLTS: 120/240		PHASE: SINGLE		LOCATION: EXTERIOR		
MAIN: 125a	FEED: XXX		THREE WIRE		MOUNTING: SURFACE				
LOAD DESCRIPTION	WATTS	BRK	WVS	DISC	WVS	DISC	WVS	DISC	LOAD DESCRIPTION
3 TON A/C w/ 10 KW HEAT STRIP ②	5,568	67	96	1	2	#12	20	1,440	(4) RECEPTS
(4) GEN LIGHTS	600	20	#12	5	4	#12	30	720	(4) RECEPTS
(1) SOLATUBE SKYLIGHTS	30	20	#12	7	8	#10	20	1,440	(1) HAND DRYER
(4) GEN LIGHTS	600	20	#12	9	8	#10	20	1,080	(1) HAND DRYER
SPACE		11							SPACE
"A" WATTS = 8,200 W					"B" WATTS = 7,038 W				
LCL = 3,084 W + 15,246 W = 18,330 W					TOTAL WATTS: 18,330 + 240				
					TOTAL AMPS: 78.37				

ELECTRICAL PANEL SCHEDULE "B"															
BUSS: 125a		SPACES: 12		VOLTS: 120/240		PHASE: SINGLE		LOCATION: EXTERIOR							
MAIN: 125a				FEED: XXX		THREE WIRE				MOUNTING: SURFACE					
LOAD DESCRIPTION		WATTS		BRK		WVS		DISC		WATTS		LOAD DESCRIPTION			
		A	B	A	B	A	B	A	B	A	B				
3 TON A/C w/ 10 KW HEAT STRIP		5,568	67	96	1	2	#12	20	900			(5) RECEPTS			
		5,568	67	2	#10	3	4	#10	30	3,000		(1) EEM WATER HEATER			
(2) GEN LIGHTS		600	20	#12	5	8	#10	30	3,000			(1) EEM WATER HEATER			
SPACE		200	9	10		8	#10	20		2,300		(1) HAND DRYER			
SPACE			11									SPACE			
SPACE			12									SPACE			
"A" WATTS = 6,988 W												"B" WATTS = 10,888 W			
LCL = 2,834 W + 20,536 W = 23,370 W												TOTAL WATTS: 23,370 W + 240		TOTAL AMPS: 97.37	

ELECTRICAL PANEL SCHEDULE "D"									
BUSS: 125a		SPACES: 12		VOLTS: 120/240		PHASE: SINGLE		LOCATION: EXTERIOR	
MAIN: 125a		FEED: XXX		THREE WIRE		MOUNTING: SURFACE			
LOAD DESCRIPTION	WATTS	BRK	WVS	DISC	WVS	DISC	WVS	DISC	LOAD DESCRIPTION
3 TON A/C w/ 10 KW HEAT STRIP	5,568	67	96	1	2	#12	20	1,440	(7) RECEPTS
(4) GEN LITE (1) DOME LITE (2) GEN LITE (1) EXT LITE	5,568	2	#10	3	4	#12	30	720	SPACE
(2) GEN LITE (1) EXT LITE (1) EXT LITE (1) EXT LITE	1,356	20	#12	5	8	#10	20	1,440	SPACE
(2) GEN LITE (1) DOME LITE (2) GEN LITE (1) EXT LITE	305	20	#12	7	8	#10	20	1,080	SPACE
SPACE		9	10						SPACE
SPACE		11	12						SPACE
"A" WATTS = 8,133 W					"B" WATTS = 5,873 W				
LCL = 3,166 W + 14,006 W = 17,162 W					TOTAL WATTS: 17,162 W + 240				
					TOTAL AMPS: 71.93 A				

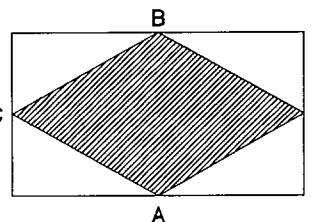
#### HVAC INFO BLOCK



3 TON AIR CONDITIONER, BARD, RH16A, WALLMOUNT, W58A-A10XX4 10.0KW  
35,400 NOM BTU COOLING CAPACITY - 9.00 EER  
34,130 NOM BTU HEATING CAPACITY FROM HEAT STRIP @ 240V  
MCA 58, MOCOP 60, MIN WIRE SIZE #8  
1205 CFM @ 3 ESP. UNIT WEIGHT 375 LBS.  
230 VOLT, 60 CYCLE, SINGLE PHASE

#### ELECTRICAL PLAN

SCALE: 1/4"=1'-0"



CUSTOMER PLAN APPROVAL  
THESE DRAWINGS  
ILLUSTRATE HOW THE  
BUILDING WILL BE  
CONSTRUCTED.  
THOROUGHLY REVIEW PLANS  
BEFORE AFFIXING YOUR  
SIGNATURE IN THE SPACE  
PROVIDED. IF THERE IS A  
DISCREPANCY BETWEEN THE  
PLANS AND THE  
SPECIFICATIONS (IF ANY) THE  
PLANS WILL TAKE  
PRECEDENCE. YOUR  
SIGNATURE INDICATES  
ACCEPTANCE OF THIS DESIGN  
AS ILLUSTRATED.  
APPROVED AS NOTED:  
☐ NO EXCEPTIONS  
TAKEN:  
☐ APPROVED WITH  
MODIFICATIONS:  
☐ REVISE & RE-SUBMIT:  
SIGNATURE: \_\_\_\_\_  
DATE: \_\_\_\_\_  
CHANGES MAY RESULT IN A  
DELAY TO ORIGINAL  
SCHEDULE



**SILVER CREEK**  
"BUILDING FOR THE NEXT GENERATION"

195 E. MORGAN ST  
PERRIS, CA 92571  
PH: 951-943-5393  
FAX: 951-940-9232

WILLIAMS SCOTSMAN  
4911 ALLISON PARKWAY  
VACAVILLE, CA 95688  
PHONE: 707-451-3000  
FAX: 707-451-4000  
HOWARD DUNN

**WILLIAMS**  
**SCOTSMAN**

PROJECT NAME:  
48' x 60'  
(STOCKTON-MAIN ADMIN BLDG)  
SHEET TITLE:  
ELECTRICAL PLAN & SCHEDULES

REVISIONS:  
BY: \_\_\_\_\_ DATE: \_\_\_\_\_  
JOB #: 30300  
SERIAL #: SCI-00537  
QUOTE #: 2011-07-017A R2  
DATE: 02-NOV-11  
DRAWN BY: A.F.  
SCI. SALES RE: JOSH DEAN  
SHEET NO.  
**E1**

PRELIMINARY-NOT FOR CONSTRUCTION (11/02/11)



NOTE:  
HVAC UNITS OPERATED ON GENERATOR POWER  
MUST BE PROTECTED FROM VOLTAGE  
FLUCTUATION, OR VOLTAGE VARIANCE.  
IMPROPER VOLTAGE MAY CAUSE SHORT AND  
LONG RANGE DAMAGE TO HVAC UNIT  
COMPONENTS AND MAY VOID HVAC UNIT  
WARRANTIES.

MECHANICAL AND GRAVITY VENTILATION REQUIREMENTS SHALL COMPLY WITH  
STATE OF CALIFORNIA, DEPARTMENT OF HOUSING & COMMUNITY  
DEVELOPMENT, 1991 UBC, 5 CFM/PERSON INTAKE AND EXHAUST.

FLEXIBLE DUCT SHALL BE MODULAR METAL FABRICATORS SERIES  
FDMA R4.2 WITH INSULATION, A POLY JACKET, AND A WIRE  
ENCAPSULATED NON-PERFORATED CORE THAT COMPLIES  
WITH ASTM C-618, 1991. FLEXIBLE DUCTING SHALL BE  
UL LISTED CLASS 1 AIR DUCT WITH A FLAME SPREAD  
RATING NOT TO EXCEED 25, AND A SMOKE-DEVELOPED RATING NOT TO EXCEED  
50 IN ACCORDANCE WITH NFPA 90A & 90B.

ALL SUPPLY AND RETURN BRANCH FITTINGS SHALL HAVE  
TAB LOCK SHEET METAL COLLARS WITH SCOOB AND  
NO DAMPER ABOVE HARD LID CEILING

THERMOSTAT PROGRAMMING TO BE PERFORMED, AND BATTERY PROVIDED,  
BY OTHERS ON SITE.

ALL HVAC EQUIPMENT LEAVES THE FACTORY WIRED FOR 240 VOLT OPERATION.  
TRANSFORMER TAP VERIFICATION TO BE PERFORMED BY OTHER ON SITE.  
THE ACCEPTABLE OPERATING RANGE FOR THE 240 & 208 TAPS ARE:

TAP	RANGE
240	253-216
208	220-187

AIR FILTERS IN HVAC UNITS OR SYSTEMS ARE TO BE  
CHANGED EVERY 30 DAYS BY OTHERS ON SITE.

TEST AND BALANCE OF HVAC SYSTEM TO BE  
PROVIDED AND PERFORMED BY OTHERS ON SITE.

SET-UP AND TESTING OF ECONOMIZERS, AND  
CLASSROOM VENTILATORS TO BE PROVIDED  
AND PERFORMED BY OTHERS ON SITE.

#### HVAC SYSTEM GENERAL NOTES

##### MECHANICAL NOTES

- 1) ALL DUCTS SHALL BE SECURELY FASTENED IN PLACE EVERY FOUR (4) FEET ON  
CENTER BY HANGERS OR CEILING JOISTS. DUCTS SHALL NOT BE SUPPORTED OFF OF  
THE SUSPENDED CEILING UNLESS CEILING IS APPROVED TO SUPPORT THE ADDITIONAL  
LOAD.
- 2) ALL HVAC UNITS AND ALL LISTED COMPONENTS ARE TO BE INSTALLED AS PER THEIR  
LISTING AND THE MANUFACTURER'S INSTRUCTIONS.
- 3) HVAC UNITS SHALL SUPPLY A MINIMUM OF 15 CFM/PERSON OF OUTSIDE AIR.
- 4) ALL DUCTS MUST BE MECHANICALLY ATTACHED AT JOINTS OR FASTENED AS PER ITS  
LISTING.
- 5) THE CROSS-SECTIONAL AREA OF THE SUPPLY AIR DUCT SHALL BE AT LEAST EQUAL  
TO THE CROSS-SECTIONAL AREA OF THE HVAC EQUIPMENT'S SUPPLY AIR OPENING.
- 6) AN ELECTRICAL DUPLEX RECEPTACLE SHALL BE LOCATED WITHIN 25' OF ALL HVAC  
EQUIPMENT. IF LOCATED OUTDOORS, THIS RECEPTACLE MUST BE WEATHERPROOF AND  
G.F.C.I. PROTECTED.
- 7) AN ELECTRICAL DISCONNECT MUST BE PROVIDED WITHIN SIGHT OF THE HVAC UNIT.  
(EXCEPT WHEN ELECTRICAL DISTRIBUTION PANEL IS WITHIN SIGHT OF UNIT.)
- 8) RETURN/OUTSIDE AIR AND SUPPLY AIR TO BE GREATER THAN OR EQUAL TO THE DUCT  
SIZES SHOWN BELOW:
- 9) FURNACES - 2 SQUARE INCHES PER 1000 BTUH  
HEAT PUMPS - 6 SQUARE INCHES PER 1000 BTUH  
10) RESTROOM EXHAUST FANS TO PROVIDE A MINIMUM OF ONE AIR CHANGE EVERY 15  
MINUTES.

PENETRATIONS THROUGH FULL HEIGHT WALLS (REQUIRED) SIZES FOR FLEX DUCT

14" PENETRATIONS THROUGH FULL HEIGHT WALL REQUIRE 17"X17"	13333
12" PENETRATIONS THROUGH FULL HEIGHT WALL REQUIRE 15"X15"	13333
10" PENETRATIONS THROUGH FULL HEIGHT WALL REQUIRE 13"X13"	13333

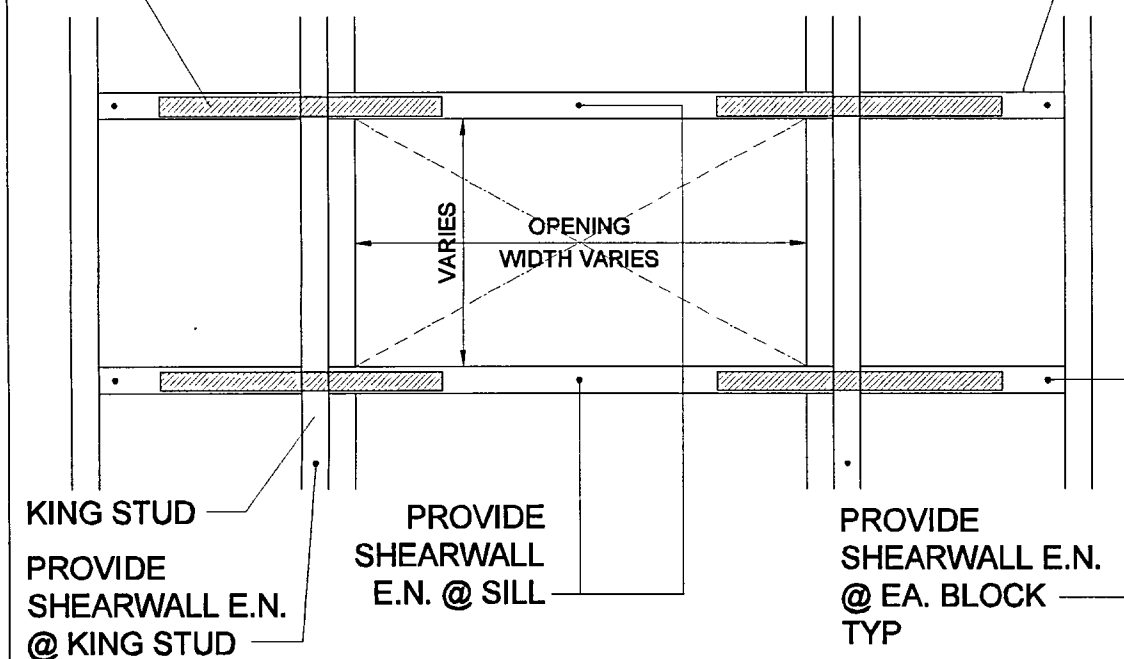
#### MECHANICAL PLAN

SCALE: 1/4"=1'-0"

SIMPSON LSTA24  
STRAP w/ 16d FROM  
HEADER TO BLOCK  
TYP @ 8  
LOCATIONS ALONG  
LINE 2

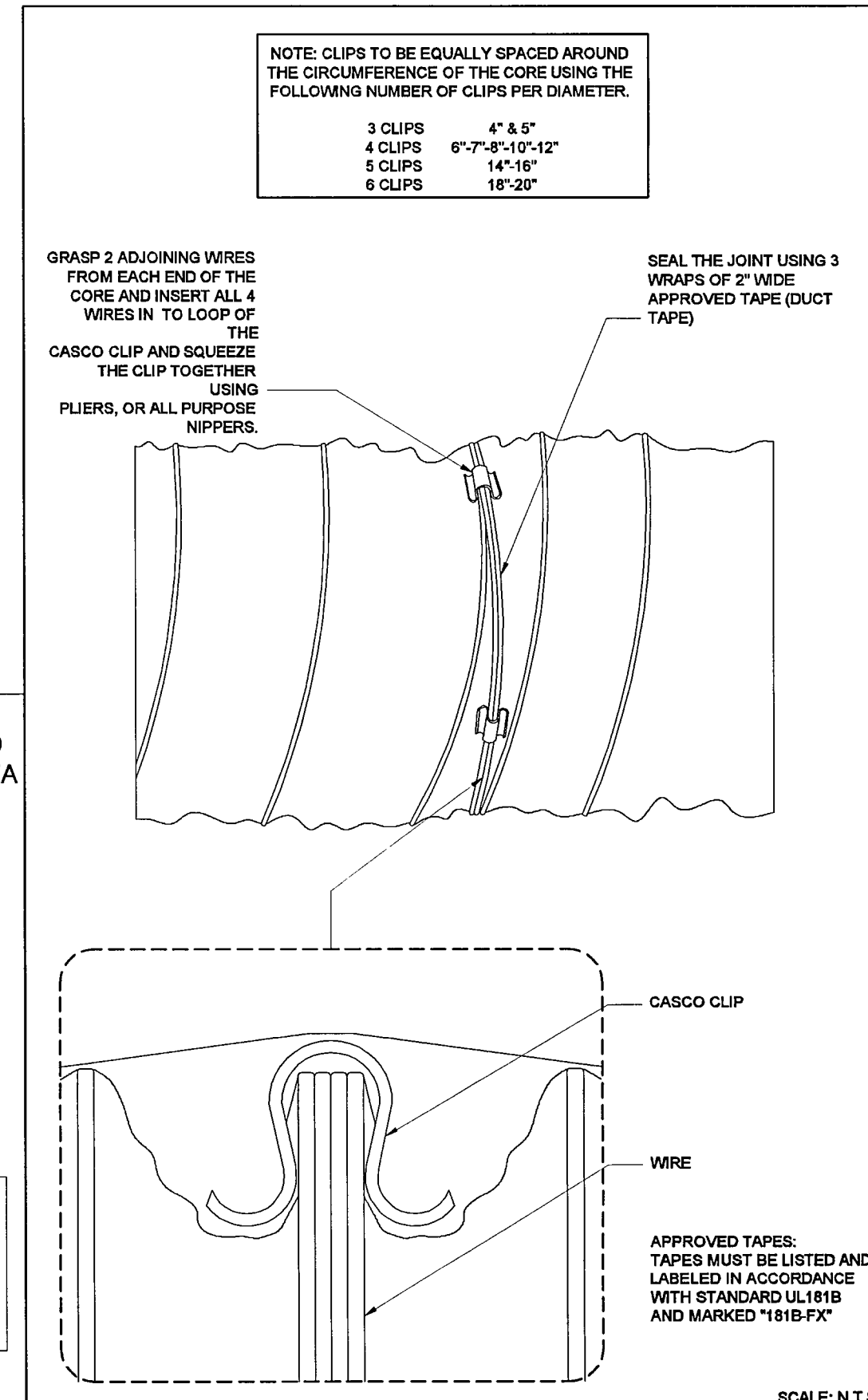
NOTE: SIMPSON LSTA24  
STRAP CAN BE SUBSTITUTED  
BY 1 1/2" x 24" x 20ga STRAP w/  
16d NAILS @ 3" O.C. STRAP @  
BLOCK SIDE SHOULD BE 12"  
LONG MIN.

BLOCK THE FIRST  
BAY ADJACENT TO  
THE OPENING @ EA  
SIDE @ HEADER &  
SILL LEVEL



B STRAPPING DETAIL @ WALL AC DUCT OPENING  
SCALE: N.T.S.

FINISH SCHEDULE	
SYMBOL	DESCRIPTION
	3 TON AIR CONDITIONER, BARO, R410A, WALLMOUNT, V036A-A10XX4 10.0KW 35,450 NOM BTU COOLING CAPACITY - 9.0 EER 34,130 NOM BTU HEATING CAPACITY FROM HEAT STRIP @ 240V MCA 55, MOCOP 60, MIN. WIRE SIZE #8 1255 CFM @ 3 ESP, UNIT WEIGHT 375 LBS. 230 VOLT, 60 CYCLE, SINGLE PHASE
	THERMOSTAT, BRAEBURN, 2000G, MANUAL-CHANGEOVER, DIGITAL-PROGRAMMABLE, 5/2, 1-HEAT/1-COOL, 0P WIRING DIAGRAM # 11 0298
	SUPPLY DIFFUSER-CEILING, MODULAR METAL FABRICATORS, PD52424 24 X 24, T-BAR, 4 WAY, PERFORATED FACE, FIBERBOARD BACK, 10" COLLAR, U.N.O.
	RETURN GRILLE-CEILING, MODULAR METAL FABRICATORS, PD2424 24 X 24, T-BAR, PERFORATED FACE, FIBER BOARD BACK, 12" COLLAR, U.N.O.
	SUPPLY DIFFUSER-CEILING, MODULAR METAL FABRICATORS, PD51224, 12 X 24, T-BAR, 4 WAY, PERFORATED FACE, FIBERBOARD BACK, 8" COLLAR, U.N.O.
	26"X8" SHORT SUPPLY PLENUM W/2 EA. 12" COLLARS, 24 GA. BARE, RAW, WRAPPED W/1/2" FOIL BACKED INSULATION.
	MIN. 34X10 FIBERGLASS DUCTBOARD IN WALL.
	SHEET METAL T-WYE WITH MANUAL VOLUME DAMPERS AS INDICATED ON MECH PLAN.
	SHEET METAL BRANCH DUCT TAKE-OFF WITH MANUAL VOLUME DAMPER.
	SUPPLY R4.2, CLASS 1, FLEX DUCT
	RETURN R4.2, CLASS 1, FLEX DUCT

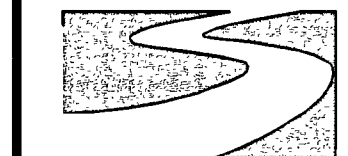


A FLEX DUCT SPLICE DETAIL  
SCALE: N.T.S.

#### CUSTOMER PLAN APPROVAL

THESE DRAWINGS  
ILLUSTRATE HOW THE  
BUILDING WILL BE  
CONSTRUCTED.  
THOROUGHLY REVIEW PLANS  
BEFORE AFFIXING YOUR  
SIGNATURE IN THE SPACE  
PROVIDED. IF THERE IS A  
DISCREPANCY BETWEEN THE  
PLANS AND THE  
SPECIFICATIONS (IF ANY) THE  
PLANS WILL TAKE  
PRECEDENCE. YOUR  
SIGNATURE INDICATES  
ACCEPTANCE OF THIS DESIGN  
AS ILLUSTRATED.  
APPROVED AS NOTED:  
☐ \* NO EXCEPTIONS  
TAKEN.  
☐ \* APPROVED WITH  
MODIFICATIONS.  
☐ \* REVISE & RE-SUBMIT.

SIGNATURE:  
DATE:  
CHANGES MAY RESULT IN A  
DELAY TO ORIGINAL  
SCHEDULE



**SILVER CREEK**  
195 E. MORGAN ST  
PERRIS, CA 92571  
PH: 951-943-5393  
FAX: 951-940-9232

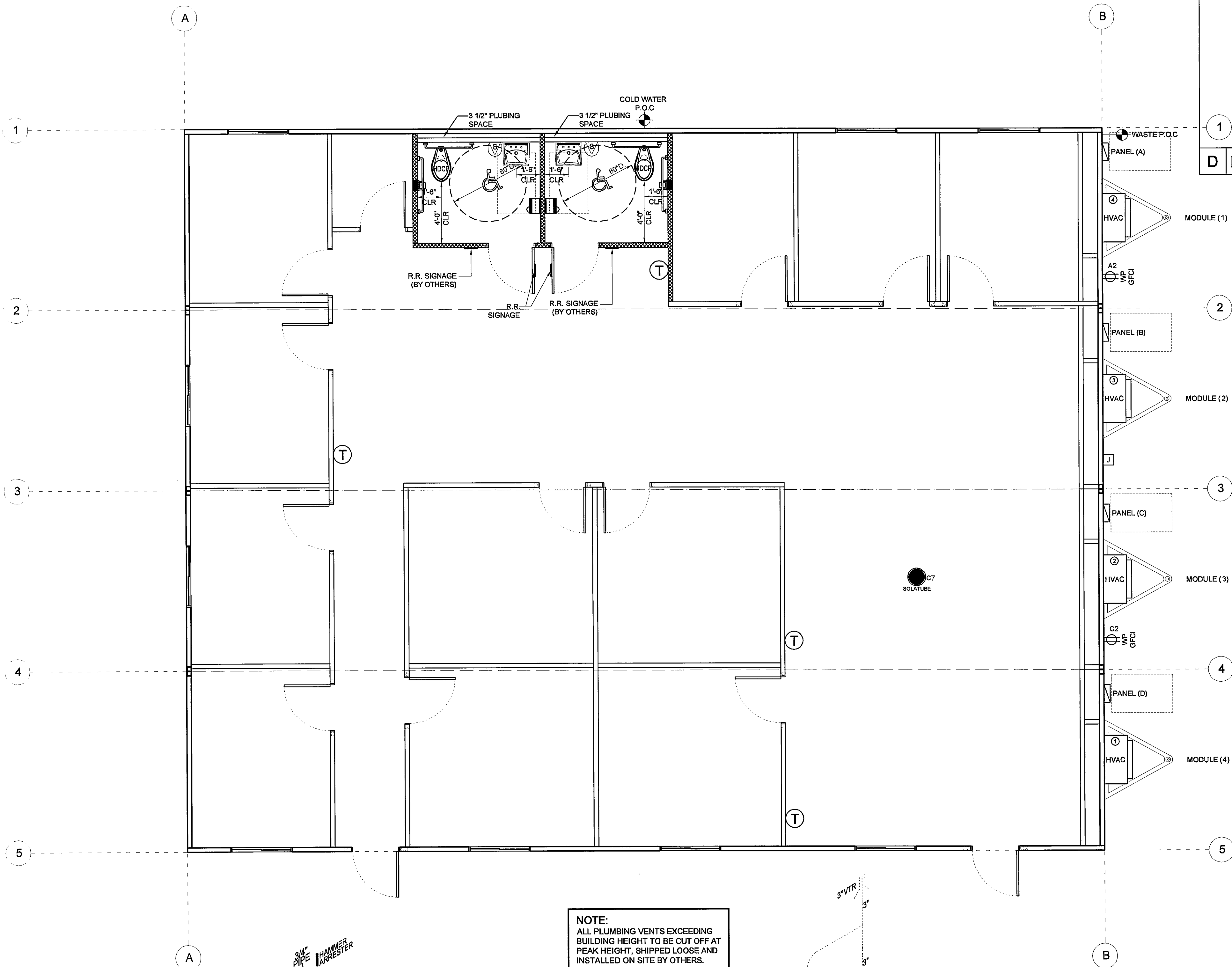
WILLIAMS SCOTSMAN  
4911 ALLISON PARKWAY  
VACAVILLE, CA 95688  
PHONE: 707-451-3000  
FAX: 707-451-4000  
HOWARD DUNN

**WILLIAMS SCOTSMAN**

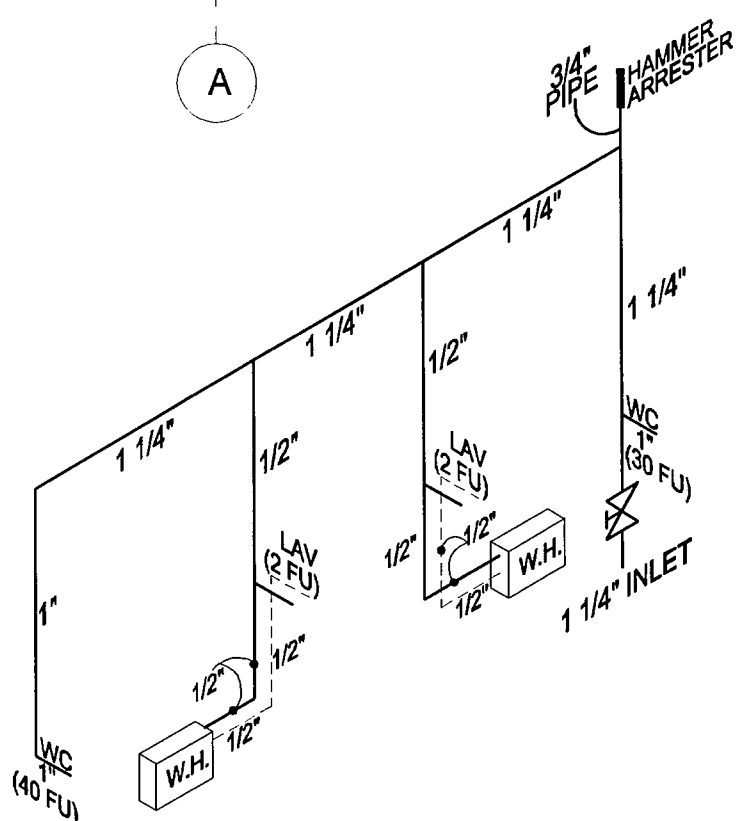
PROJECT NAME:  
48' x 60'  
(STOCKTON-MAIN ADMIN BLDG)  
SHEET TITLE:  
MECHANICAL PLAN & SCHEDULES

REVISIONS:  
BY: DATE:  
JOB #: 30300  
SERIAL #: SCI-00537  
QUOTE #: 2011-07-017A R2  
DATE: 02-NOV-11  
DRAWN BY: A.F.  
SCI. SALES RE: JOSH DEAN

SHEET NO.  
**M1**



NOTE:  
ALL PLUMBING VENTS EXCEEDING  
BUILDING HEIGHT TO BE CUT OFF AT  
PEAK HEIGHT, SHIPPED LOOSE AND  
INSTALLED ON SITE BY OTHERS.

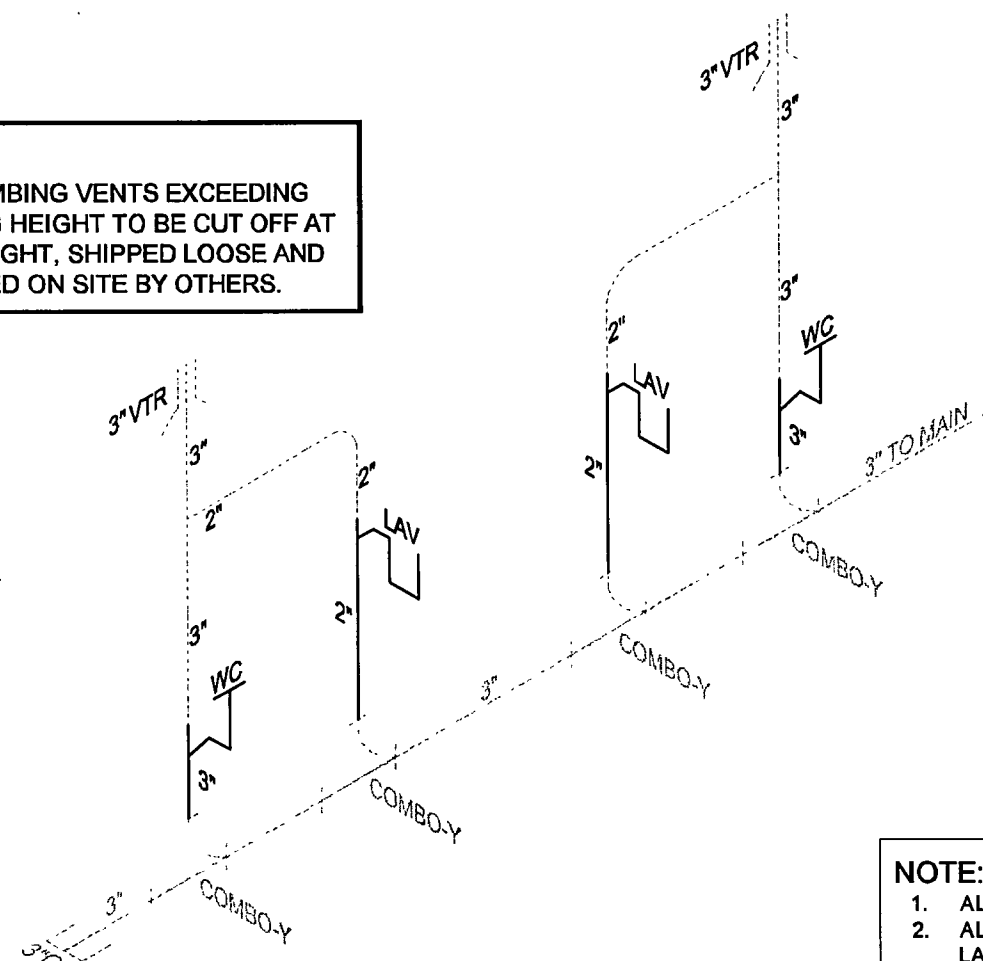


### COLD & HOT SCHEMATIC

MAXIMUM PRESSURE RANGE @  
POINT OF CONNECTION 46 TO 60 PSI  
GREATEST DEVELOPED LENGTH 40'  
SUPPLY: COPPER (TYPE L)

— COLD WATER PIPE  
— HOT WATER PIPE

1 1/4" INLET  
74 FIXTURE UNITS



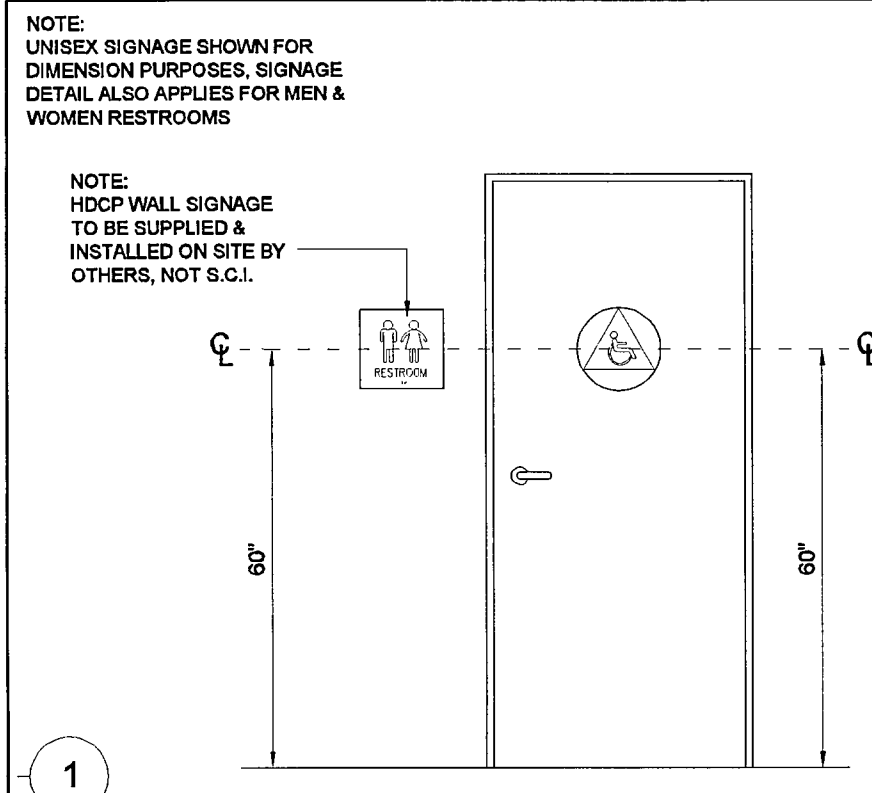
### WASTE & VENT SCHEMATIC

ALL PIPE TO BE ABS SCHEDULE 40  
AND WILL SLOPE 1/4" PER FOOT

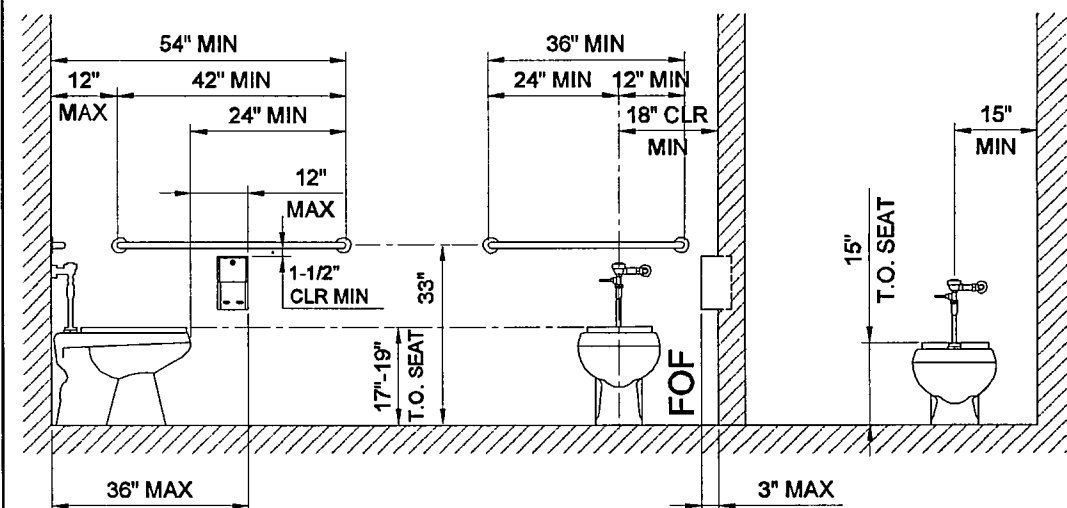
CUSTOMER IS TO VERIFY POINT OF CONNECTION  
FOR WASTE ON PLANS. IF NO MODIFICATION IS  
INDICATED AS CUSTOMER SIGN OFF THEN THE  
MANIFOLD WILL BE SUPPLIED AS SHOWN ON PLANS.

— WASTE LINE (BY S.C.I.)  
— VENT LINE (BY S.C.I.)  
- - - MANIFOLD (SUPPLIED BY S.C.I. INSTALLED ON SITE  
BY OTHERS, NOT S.C.I.)

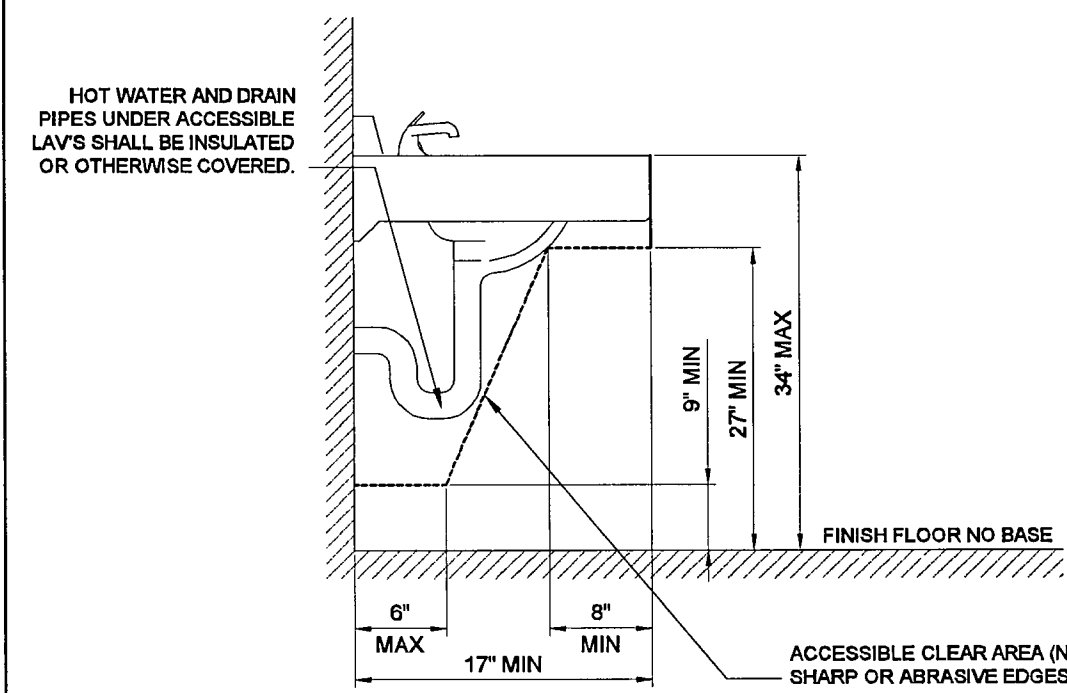
NOTE:  
1. ALL FIXTURES SHALL HAVE SHUT OFF VALVES  
2. ALL WATER LINES AND DRAIN PIPES EXPOSED BELOW HANDICAPPED  
LAVATORIES SHALL BE WRAPPED WITH INSULATED WRAP.  
3. ALL EXPOSED HOT WATER LINES THAT RUN UNDER BUILDING ARE TO  
BE INSULATED.



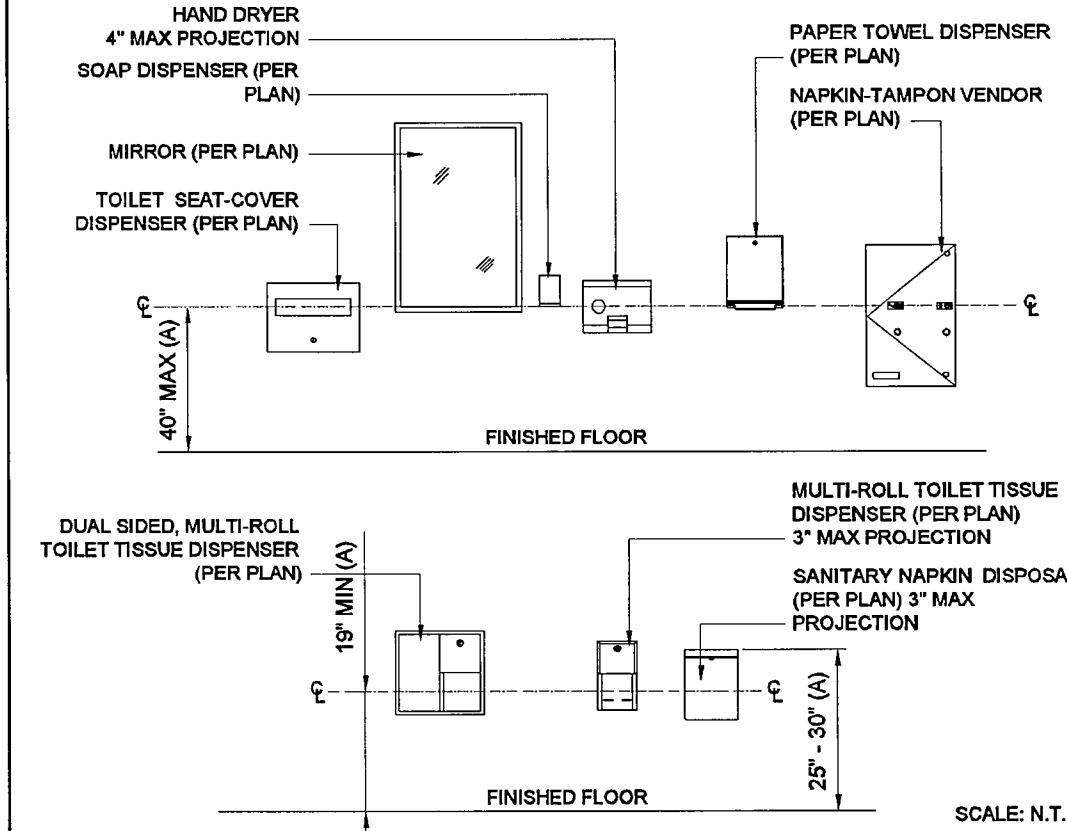
D R.R. SIGNAGE DETAIL (MAY BE MIRRORED)



A ADULT TOILET FIXTURE MOUNTING HEIGHTS  
(FLUSH VALVE SHOWN)



B LAVY MOUNTING HEIGHTS



C TOILET ACCESSORIES MOUNTING HEIGHTS

PLUMBING SCHEDULE		
SYMBOL	DESCRIPTION	QTY
	FLOOR MNT'D DUAL FLUSH VALVE ELONGATED BOWL FOR THE HANDICAPPED (FLUSH VALVE BRAND: UPPERCUT WES-111) (WATER CLOSET BRAND: )	2
	WALL MOUNTED HANDICAPPED LAVATORY w/ WALL SUPPORT CONCEALED ARMS & ELECTRONIC HAND WASHING FAUCET. (SINK BRAND: CRANE 1412 HAWKCH) (ELECTRONIC FAUCET BRAND: SLOAN OPTIMA EAF-250-HSM )	2
	EEMAX SP 3012 INSTANT WATER HEATER (110V) (BRAND: EEMAX)	2
	ONE SET 1.5" Ø GRAB BARS. INCLUDES: (1) 36" LONG & (1) 48" LONG.	2 SET/S
	RECESSED SGL TOILET PAPER DISPENSER ( BRAND: BOBRICK 663 OR EQUAL)	2
	18" x 36" MIRROR, POLISHED EDGE, UNFRAMED (NO BRAND SPECIFIED).	2
	LIQUID SOAP DISPENSER. (NO BRAND SPECIFIED).	2
	SURFACE MOUNTED ELECTRIC HAND DRYER (110V) INSTALLED PER CODE. (110V) (BRAND: WORLD DRYER # DA)	2
	PISTON OPERATED WATER HAMMER ARRESTER (SEE PLAN FOR LOCATION) (BRAND: MIFAB)	2

CUSTOMER PLAN APPROVAL  
THESE DRAWINGS  
ILLUSTRATE HOW THE  
BUILDING WILL BE  
CONSTRUCTED.  
THOROUGHLY REVIEW PLANS  
BEFORE AFFIXING YOUR  
SIGNATURE IN THE SPACE  
PROVIDED. IF THERE IS A  
DISCREPANCY BETWEEN THE  
PLANS AND THE  
SPECIFICATIONS (IF ANY) THE  
PLANS WILL TAKE  
PRECEDENCE. YOUR  
SIGNATURE INDICATES  
ACCEPTANCE OF THIS DESIGN  
AS ILLUSTRATED.  
APPROVED AS NOTED:  
☐ \* NO EXCEPTIONS  
TAKEN;  
☐ \* APPROVED WITH  
MODIFICATIONS;  
☐ \* REVISE & RE-SUBMIT;  
SIGNATURE: \_\_\_\_\_  
DATE: \_\_\_\_\_  
CHANGES MAY RESULT IN A  
DELAY TO ORIGINAL  
SCHEDULE

**SILVER CREEK**  
"BUILDING FOR THE NEXT GENERATION"  
195 E. MORGAN ST  
PERRIS, CA 92571  
PH: 951-943-5393  
FAX: 951-940-9232

WILLIAMS SCOTSMAN  
4911 ALLISON PARKWAY  
VACAVILLE, CA 95688  
PHONE: 707-451-3000  
FAX: 707-451-4000  
HOWARD DUNN

**WILLIAMS  
SCOTSMAN**

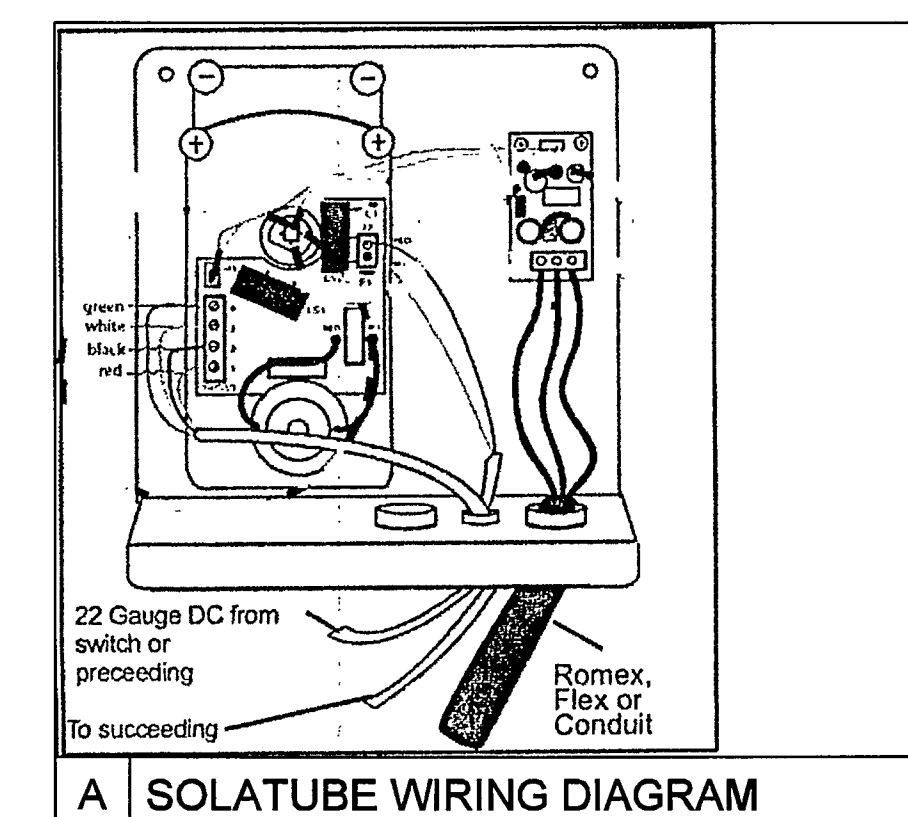
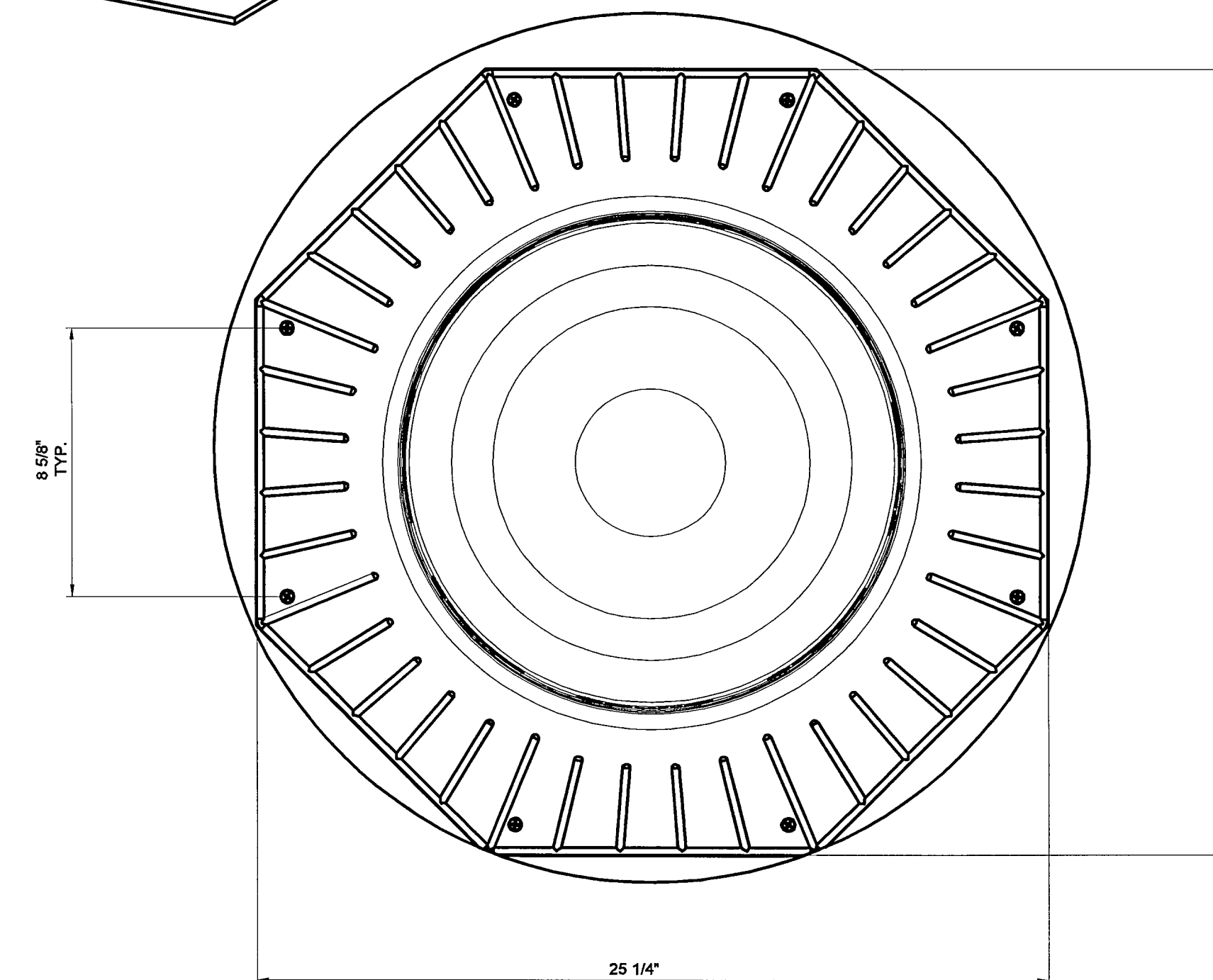
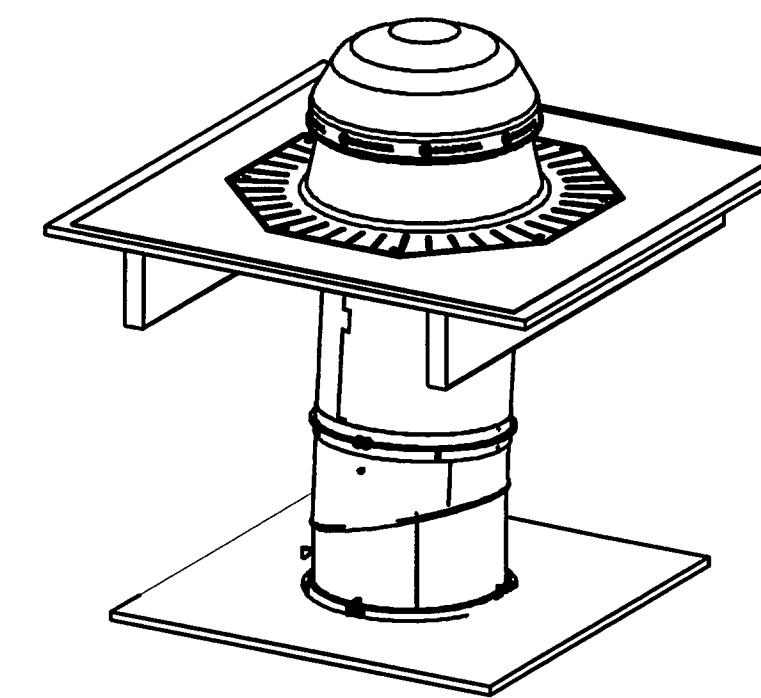
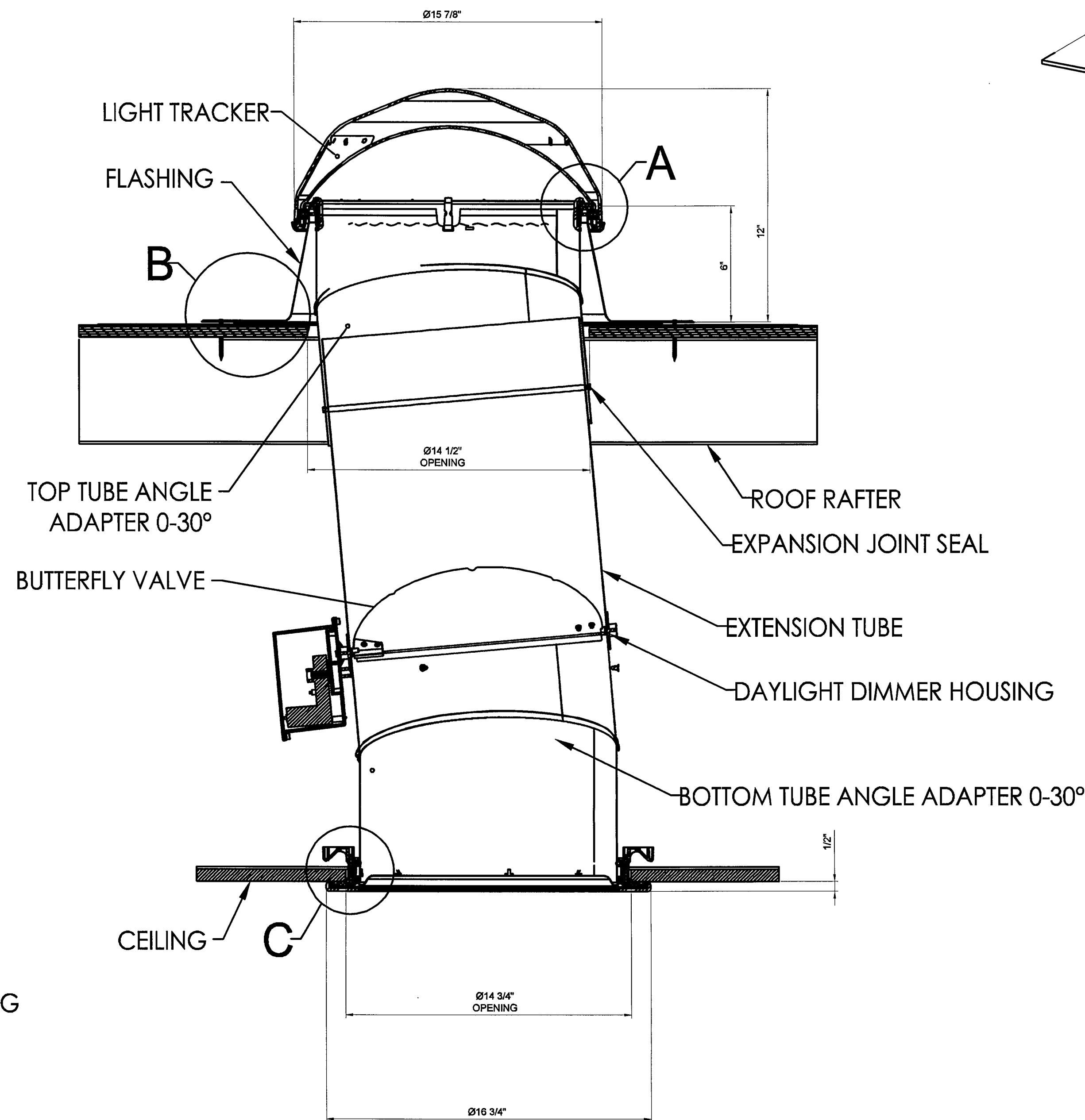
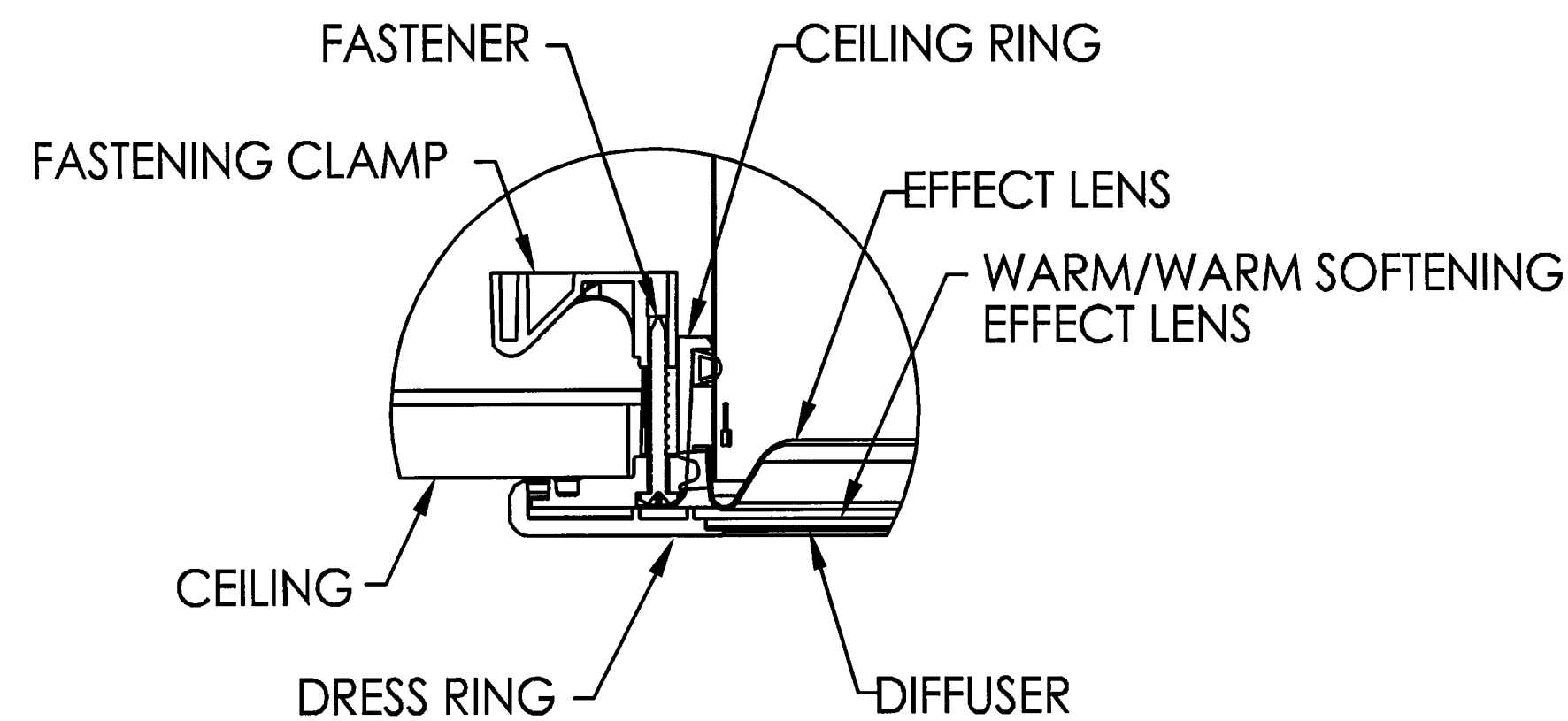
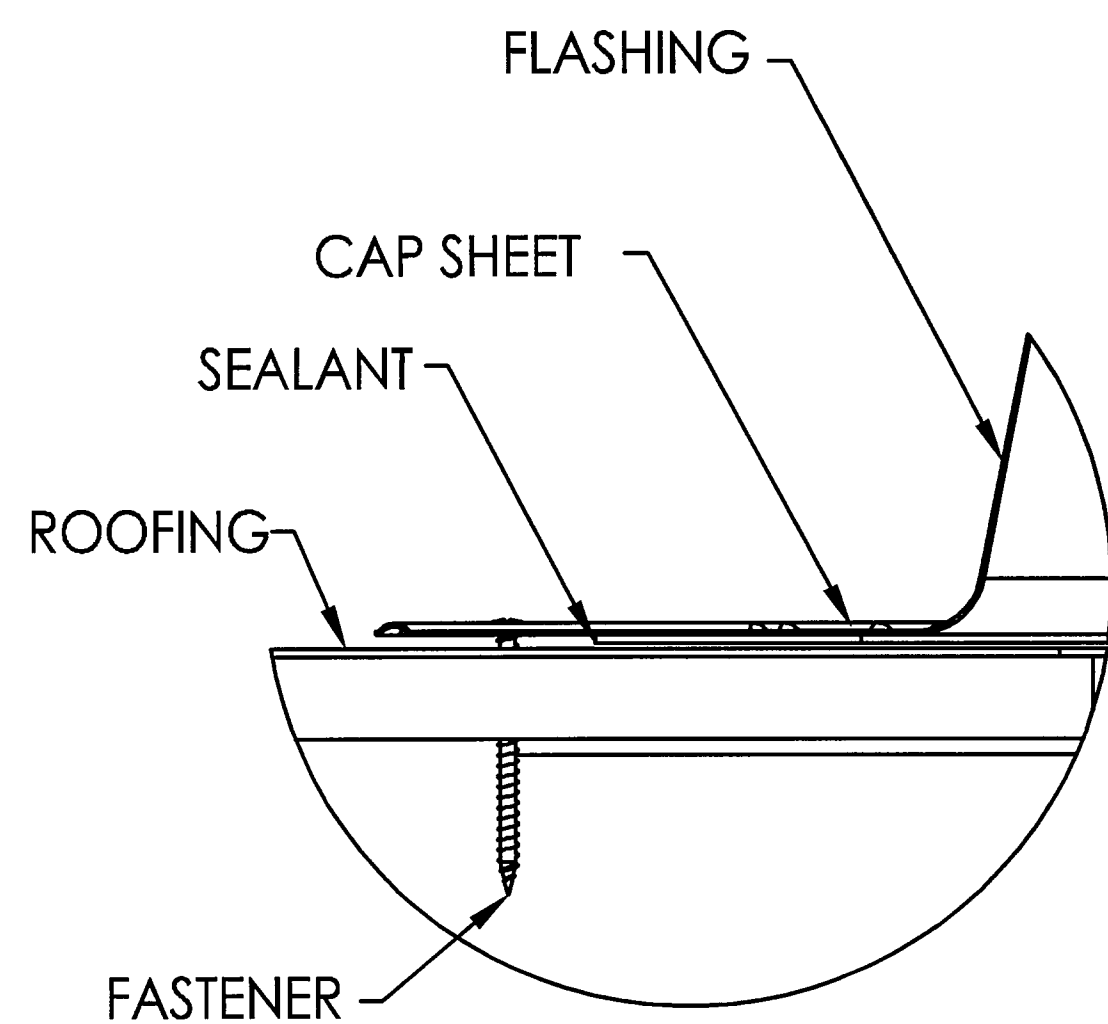
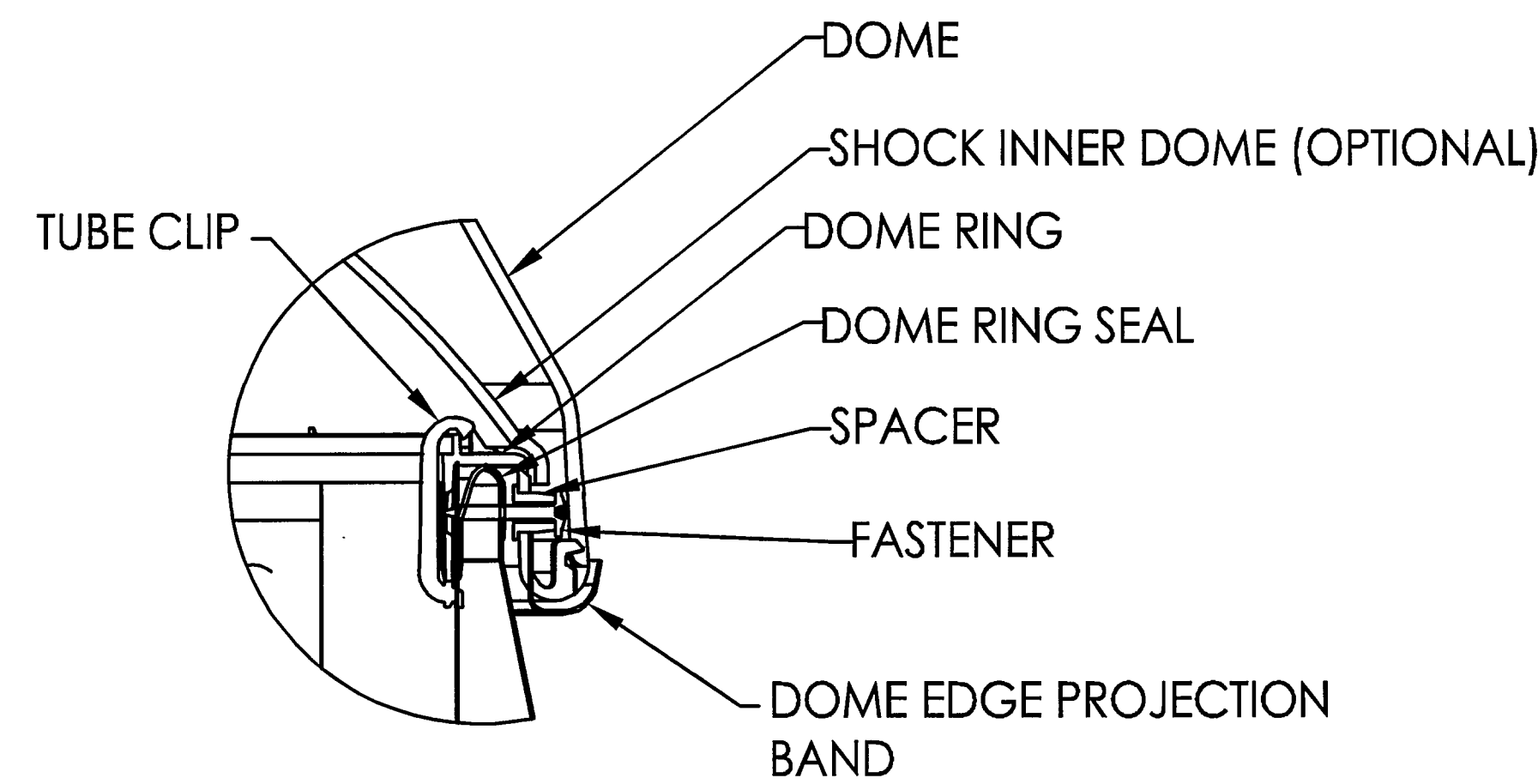
PROJECT NAME:  
**48' x 60'  
(STOCKTON-MAIN ADMIN BLDG)**  
SHEET TITLE:  
**PLUMBING PLAN & SCHEDULES**

REVISIONS:  
BY: \_\_\_\_\_ DATE: \_\_\_\_\_

JOB #: **30300**  
SERIAL #: **SCI-00537**  
QUOTE #: **2011-07-017AR2**  
DATE: **02-NOV-11**  
DRAWN BY: **A.F.**  
**SCI. SALES RE: JOSH DEAN**

SHEET NO.  
**P1**

PRELIMINARY-NOT FOR CONSTRUCTION (11/02/11)



**CUSTOMER PLAN APPROVAL**  
 THESE DRAWINGS ILLUSTRATE HOW THE BUILDING WILL BE CONSTRUCTED. THOROUGHLY REVIEW PLANS BEFORE AFFIXING YOUR SIGNATURE IN THE SPACE PROVIDED. IF THERE IS A DISCREPANCY BETWEEN THE PLANS AND THE SPECIFICATIONS (IF ANY) THE PLANS WILL TAKE PRECEDENCE. YOUR SIGNATURE INDICATES ACCEPTANCE OF THIS DESIGN AS ILLUSTRATED.  
 APPROVED AS NOTED:  
☐ \* NO EXCEPTIONS TAKEN  
☐ \* APPROVED WITH MODIFICATIONS  
☐ \* REVISE & RE-SUBMIT  
 SIGNATURE: \_\_\_\_\_  
 DATE: \_\_\_\_\_  
 CHANGES MAY RESULT IN A DELAY TO ORIGINAL SCHEDULE



**SILVER CREEK**  
 "BUILDING FOR THE NEXT GENERATION"  
 195 E. MORGAN ST  
 PERRIS, CA 92571  
 PH: 951-943-5393  
 FAX: 951-940-9232

WILLIAMS SCOTSMAN  
 4911 ALLISON PARKWAY  
 VACAVILLE, CA 95688  
 PHONE: 707-451-3000  
 FAX: 707-451-4000

HOWARD DUNN

**WILLIAMS SCOTSMAN**

PROJECT NAME:  
**48' x 60' (STOCKTON-MAIN ADMIN BLDG)**  
 SHEET TITLE:  
**SOLAR TUBE**

REVISIONS:  
 BY: DATE:  
 △  
 △  
 △  
 △  
 JOB #: **30300**  
 SERIAL #: **SCI-00537**  
 QUOTE #: **2011-07-017A R2**  
 DATE: **02-NOV-11**  
 DRAWN BY: **A.F.**  
 SCI. SALES RE: **JOSH DEAN**  
 SHEET NO.  
**S1**

PRELIMINARY-NOT FOR CONSTRUCTION (11/02/11)