

A

B

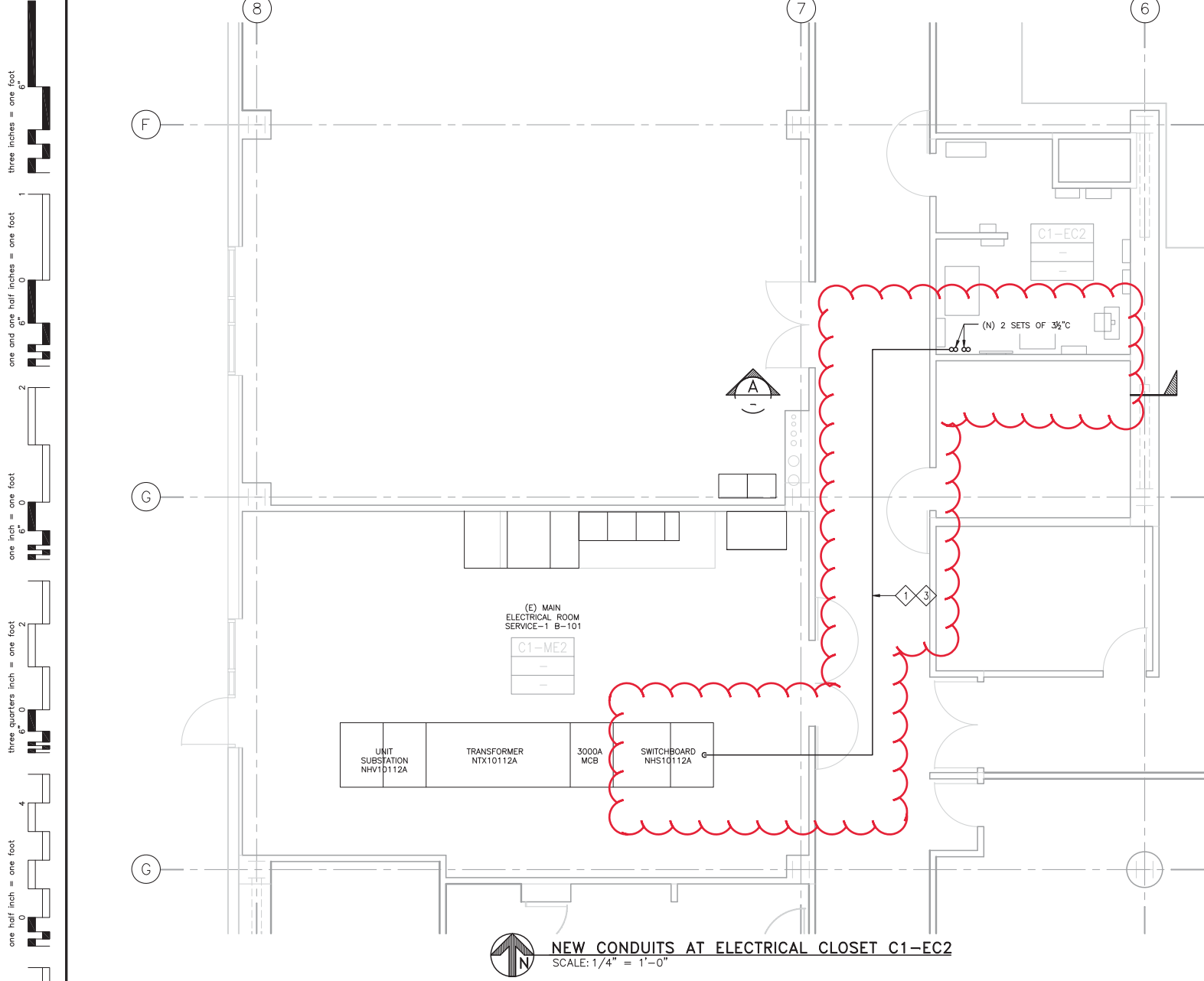
C

D

E

F

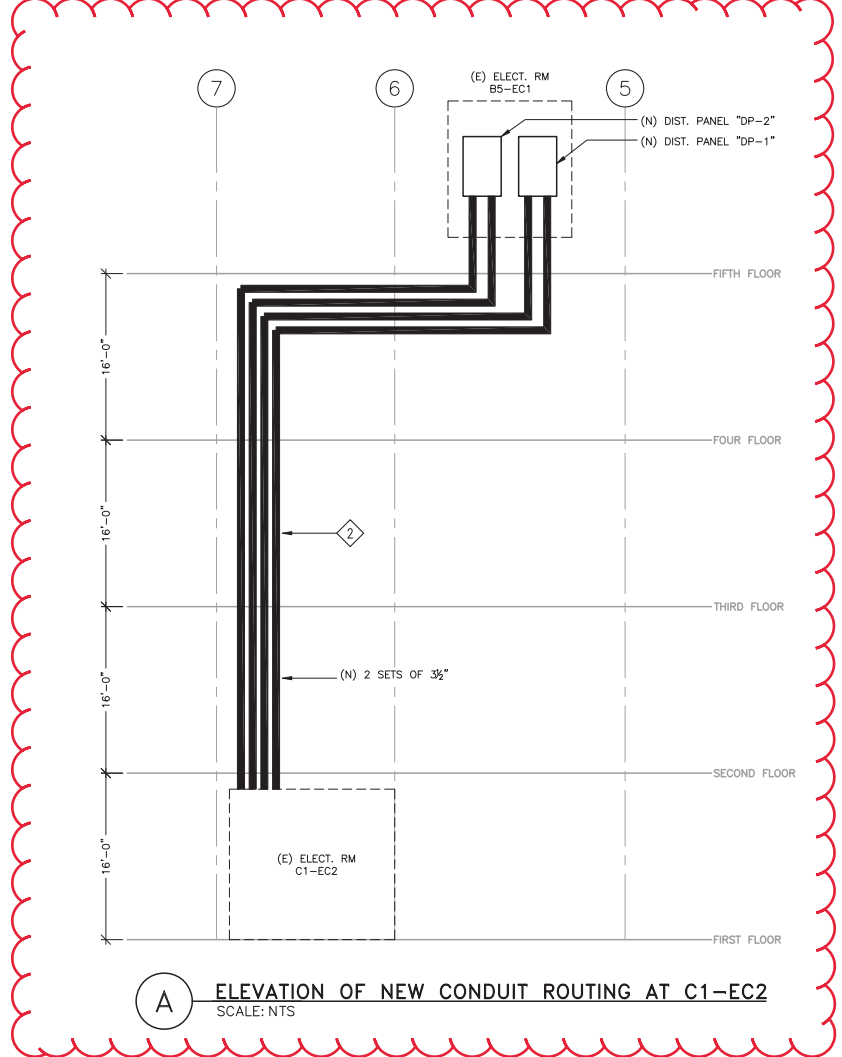
F



three inches = one foot
one and one half inches = one foot
one inch = one foot
three quarters inch = one foot
one half inch = one foot
one eighth inch = one foot
one quarter inch = one foot
one eighth inch = one foot

SHEET NOTES:

- 1 CONTRACTOR SHALL RUN 4 SET OF 3/2" WITH WIRES FROM EXISTING MAIN ELECTRICAL ROOM SERVICE-1 LOCATED AT FIRST FLOOR B-101 TO EXISTING ELECTRICAL CLOSET C1-EC-2 NEW CONDUIT SHALL BE PLACED AT THE NW WALL OF THE ELECTRICAL CLOSET C1-EC-2.
- 2 CONTRACTOR SHALL FOLLOW THE NEW SHAFT LOCATED ALONG ELECTRICAL CLOSET C2-EC-2, C3-EC-2 AND C4-EC2. CONTRACTOR TO CONNECT NEW CONDUIT AND WIRES SHALL USE THE CEILING SPACE BETWEEN FOURTH FLOOR AND PENTHOUSE.
- 3 CONDUIT ROUTE SHOWED IS SCHEMATIC ONLY, CONTRACTOR SHALL FIELD VERIFY FINAL CONDUIT ROUTE. CONTRACTOR SHALL PLACE ALL CONDUITS IN THE CONCEALED SPACE ABOVE CEILING. REMOVAL AND PLACEMENT OF CEILING TILES SHALL INCLUDE INFECTION CONTROL MEASURES PER SECTION 013526.

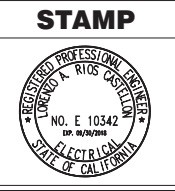
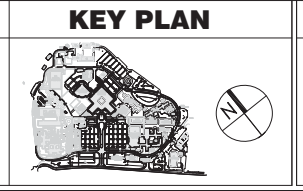


A ELEVATION OF NEW CONDUIT ROUTING AT C1-EC2
SCALE: NTS

ISSUE FOR BID -

FINAL BID DOCUMENTS (15-388)	03/03/17
100% CONSTRUCTION DOCUMENTS (15-349)	10/04/16
DESIGN DEVELOPMENT (DD) SUBMISSION (65%)	08/05/16
65% DESIGN DEVELOPMENT (15-274)	05/20/16
CONCEPTUAL DESIGN REVIEW (15-218)	03/03/16
CONCEPTUAL DESIGN REVIEW (15-167)	01/18/16
Revisions:	Date

CONSULTANTS:



ARCHITECT/ENGINEERS:

ADVANCE DESIGN CONSULTANTS, INC.

908 PARK AVENUE SAN JOSE, CALIFORNIA 95128
P: (408) 297-1881 F: (408) 294-3186 www.adcengineers.com

ATTENTION:
ONLY WET SIGNED DOCUMENTS CONSTITUTE ADVANCE DESIGN CONSULTANTS, INC. PROFESSIONAL WORK AND BECAUSE OTHER REPRODUCIBLE DOCUMENTS MAY BE EASILY ALIENED WITHOUT THE CONSENT OF ADVANCE DESIGN CONSULTANTS, INC. THE WET SIGNED DOCUMENTS MUST BE RETURNED TO FOR THE ORIGINAL AND CORRECT INFORMATION. IF THERE ARE ANY DIFFERENCES BETWEEN THE WET SIGNED DOCUMENTS AND ANY OTHER DOCUMENTS, THE WET SIGNED DOCUMENTS SHALL GOVERN.

ADVANCE DESIGN CONSULTANTS, INC. IS NOT RESPONSIBLE FOR ANY MODIFICATIONS MADE TO OUR DOCUMENTS BY ANYONE OTHER THAN AUTHORIZED REPRESENTATIVES OF ADVANCE DESIGN CONSULTANTS, INC.

PO# 15-308-57

Drawing Title
**ELECTRICAL
NEW CONDUIT ROUTING AND ELEVATION**

Approved: Project Director

Project Title
**VA PALO ALTO
UPGRADE CHILLED WATER SYSTEM
FOR BUILDING 100 AND 101**

Location
PALO ALTO, CA

Date
03/03/2017

Checked
L. RIOS

Drawn
R. ROTHWEIN

Project Number
640-15-159

Building Number
B100, B101

Drawing Number
E-106

**Office of
Facilities
Management**

Department of
Veterans Affairs