

12610 - Finish and Upholstery

Uph.  
 Code

No.	Type	Location	Fabric Description
A	Single Fabric	Seat Fabric	<p>Manufacturer: Architex                      Style Name: Prescription                      No. &amp; Color: Libby                      Content: 100% Polyurethane (Face)                      Backing: 100% Polyester                      Finish: Write-Off (Ink Resistant,                      Antibacterial, Antimicrobial,                      Mildew Resistant)</p> <p>Width: 54"                      Repeat: None                      Weight: 1.310 lbs./yard                      Cleaning Code: W (1:5 Bleach Dilution)                      Performance Specification: 1,000,000 Wyzenbeek</p> <p>For Further Performance Requirements Go To: <a href="http://www.architex-lib.com/cgi-bin/cob?CPN=iteming&amp;SID=2236432619162&amp;SKU=97213">http://www.architex-lib.com/cgi-bin/cob?CPN=iteming&amp;SID=2236432619162&amp;SKU=97213</a></p>



12610 - Finish and Upholstery



Uph.  
 Code

No.	Type	Location	Fabric Description
B	Two- Fabric	Conference Room Seating	<p><i>Back:</i> Manufacturer: Designtex                      Style Name: Jaunt                      No. &amp; Color: #3568-801 Arboretum                      Content: 100% Preconsumer Recycled Solution Dyed Nylon                      Finish: Stain Repellent                      Backing: Acrylic                      Width: 54"                      Repeat: 9-1/4"v.; 13-3/4"h.                      Weight: 15-3/4 ounces/linear yard                      Cleaning: Water-based/Solvent (WS) , Bleach Cleanable (4:1)                      Performance Specification: 1,000,000 Wyzenbeek; 10 Year Warranty                      For Further Performance Requirements Go To: <a href="http://www.designtex.com/jaunt.html">http://www.designtex.com/jaunt.html</a></p> <p><i>Seat:</i> Manufacturer: Momentum Design Studio                      Style Name: Silica Leather                      No. &amp; Color: Lichen                      Product No.: #09141592                      Content: 100% Silicone                      Backing: Polyester                      Width: 54"                      Weight: 1.57 lb./yard                      Maintenance: WS; Bleach Cleanable (4:1)                      Flame Resist. CA Bulletin 117 Sec. E                      Performance Specification: 210,000 D.R.; Reduced Environmental Impact: GREENGUARD Gold Certified; PVC Free                      For Further Performance Requirements Go To: <a href="https://www.memosamples.com/servlet/quickSearchSpecs.jsp?prodNo=09141471&amp;patternPos=&amp;colorPos=&amp;chairImgKey=&amp;backToPage=silica_leather_pr.shtml&amp;favorites=&amp;navDirection=&amp;searchType=specs#">https://www.memosamples.com/servlet/quickSearchSpecs.jsp?prodNo=09141471&amp;patternPos=&amp;colorPos=&amp;chairImgKey=&amp;backToPage=silica_leather_pr.shtml&amp;favorites=&amp;navDirection=&amp;searchType=specs#</a></p>



12610 - Finish and Upholstery

Uph.  
 Code

No.	Type	Location	Fabric Description
C	Two- Fabric	Conference Room Seating	<p>Manufacturer: Designtex                      Style Name: Jaunt                      No. &amp; Color: #3568-402 Baltic                      Content: 100% Preconsumer Recycled Solution Dyed Nylon                      Finish: Stain Repellent                      Backing: Acrylic                      Width: 54"                      Repeat: 9-1/4"v.; 13-3/4"h.                      Weight: 15-3/4 ounces/linear yard                      Cleaning: Water-based/Solvent (WS) , Bleach Cleanable (4:1)                      Performance Specification: 1,000,000 Wyzenbeek; 10 Year Warranty                      For Further Performance Requirements Go To: <a href="http://www.designtex.com/jaunt.html">http://www.designtex.com/jaunt.html</a></p> 
	Seat:		<p>Manufacturer: Momentum Design Studio                      Style Name: Silica Leather                      No. &amp; Color: Barley                      Product No.: #09141460                      Content: 100% Silicone                      Backing: Polyester                      Width: 54"                      Weight: 1.57 lb./yard                      Maintenance: WS; Bleach Cleanable (4:1)                      Flame Resist. Performance Specification: CA Bulletin 117 Sec. E 210,000 D.R.; Reduced Environmental Impact: GREENGUARD Gold Certified; PVC Free                      For Further Performance Requirements Go To: <a href="https://www.memosamples.com/servlet/quickSearchSpecs.jsp?prodNo=09141471&amp;patternPos=&amp;colorPos=&amp;chairImgKey=&amp;backToPage=silica_leather_pr.shtml&amp;favorites=&amp;navDirection=&amp;searchType=specs#">https://www.memosamples.com/servlet/quickSearchSpecs.jsp?prodNo=09141471&amp;patternPos=&amp;colorPos=&amp;chairImgKey=&amp;backToPage=silica_leather_pr.shtml&amp;favorites=&amp;navDirection=&amp;searchType=specs#</a></p> 

12610 - Finish and Upholstery

Uph.  
 Code

No.	Type	Location	Fabric Description
-----	------	----------	--------------------

D Two- Conference Room Seating  
 Fabric

Manufacturer: Designtex  
 Style Name: Jaunt  
 No. & Color: #3568-401 Tropic  
 Content: 100% Preconsumer Recycled  
 Solution Dyed Nylon  
 Finish: Stain Repellent  
 Backing: Acrylic  
 Width: 54"  
 Repeat: 9-1/4"v.; 13-3/4"h.  
 Weight: 15-3/4 ounces/linear yard  
 Cleaning: Water-based/Solvent (WS) ,  
 Bleach Cleanable (4:1)  
 Performance Specification: 1,000,000 Wyzenbeek; 10 Year  
 Warranty  
 For Further <http://www.designtex.com/jaunt.html>  
 Performance Requirements  
 Go To:



*Seat:* Manufacturer: Momentum Design Studio  
 Style Name: Silica Leather  
 No. & Color: Barley  
 Product No.: #09141460  
 Content: 100% Silicone  
 Backing: Polyester  
 Width: 54"  
 Weight: 1.57 lb./yard  
 Maintenance: WS; Bleach Cleanable (4:1)  
 Flame Resist. CA Bulletin 117 Sec. E  
 Performance Specification: 210,000 D.R.; Reduced  
 Environmental Impact:  
 GREENGUARD Gold Certified;  
 PVC Free  
 For Further [https://www.memosamples.com/servlet/quickSearchSpecs.jsp?prodNo=09141471&patternPos=&colorPos=&chairImgKey=&backToPage=silica\\_leather\\_pr.shtml&favorites=&navDirection=&searchType=specs#](https://www.memosamples.com/servlet/quickSearchSpecs.jsp?prodNo=09141471&patternPos=&colorPos=&chairImgKey=&backToPage=silica_leather_pr.shtml&favorites=&navDirection=&searchType=specs#)  
 Performance Requirements  
 Go To:



12610 - Finish and Upholstery

Uph.  
 Code

No.	Type	Location	Fabric Description
E	Two- Fabric	Conference Room Seating	<p>Manufacturer: Designtex                      Style Name: Jaunt                      No. &amp; Color: #3568-601 Blackberry                      Content: 100% Preconsumer Recycled Solution Dyed Nylon                      Finish: Stain Repellent                      Backing: Acrylic                      Width: 54"                      Repeat: 9-1/4"v.; 13-3/4"h.                      Weight: 15-3/4 ounces/linear yard                      Cleaning: Water-based/Solvent (WS) , Bleach Cleanable (4:1)                      Performance Specification: 1,000,000 Wyzenbeek; 10 Year Warranty                      For Further Performance Requirements Go To: <a href="http://www.designtex.com/jaunt.html">http://www.designtex.com/jaunt.html</a></p> <p><i>Seat:</i> Manufacturer: Momentum Design Studio                      Style Name: Silica Leather                      No. &amp; Color: Lichen                      Product No.: #09141592                      Content: 100% Silicone                      Backing: Polyester                      Width: 54"                      Weight: 1.57 lb./yard                      Maintenance: WS; Bleach Cleanable (4:1)                      Flame Resist. CA Bulletin 117 Sec. E                      Performance Specification: 210,000 D.R.; Reduced Environmental Impact:                      For Further Performance Requirements Go To: <a href="https://www.memosamples.com/servlet/quickSearchSpecs.jsp?prodNo=09141471&amp;patternPos=&amp;colorPos=&amp;chairImgKey=&amp;backToPage=silica_leather_pr.shtml&amp;favorites=&amp;navDirection=&amp;searchType=specs#">https://www.memosamples.com/servlet/quickSearchSpecs.jsp?prodNo=09141471&amp;patternPos=&amp;colorPos=&amp;chairImgKey=&amp;backToPage=silica_leather_pr.shtml&amp;favorites=&amp;navDirection=&amp;searchType=specs#</a></p>



12610 - Finish and Upholstery

Uph.  
 Code

No.	Type	Location	Fabric Description
-----	------	----------	--------------------

F Two- Exam Room Guest Chair  
 Fabric

Manufacturer: Designtex  
 Style Name: Leafette  
 No. & Color: #2677-201 Sunflower  
 Content: 100% Vinyl  
 Finish: PreFixx Stain Resistant  
 Backing: Polyester / Rayon Knit  
 Width: 54"  
 Repeat: None  
 Weight: 32 ounces/linear yard  
 Cleaning: Water-based/Solvent (WS) ,  
 Bleach Cleanable (4:1)  
 Performance Specification: 100,000 Wyzenbeek double  
 rubs (CD); 5 Year Warranty  
 For Further <http://www.designtex.com/leafette.html>  
 Performance Requirements  
 Go To:



*Seat:* Manufacturer: Momentum Design Studio  
 Style Name: Silica Leather  
 No. & Color: Raisin  
 Product No.: #09141647  
 Content: 100% Silicone  
 Backing: Polyester  
 Width: 54"  
 Weight: 1.57 lb./yard  
 Maintenance: WS; Bleach Cleanable (4:1)  
 Flame Resist. CA Bulletin 117 Sec. E  
 Performance Specification: 210,000 D.R.; Reduced Environmental Impact:  
 GREENGUARD Gold Certified; PVC Free  
 For Further [https://www.memosamples.com/servlet/quickSearchSpecs.jsp?prodNo=09141471&patternPos=&colorPos=&chairImgKey=&backToPage=silica\\_leather\\_pr.shtml&favorites=&navDirection=&searchType=specs#](https://www.memosamples.com/servlet/quickSearchSpecs.jsp?prodNo=09141471&patternPos=&colorPos=&chairImgKey=&backToPage=silica_leather_pr.shtml&favorites=&navDirection=&searchType=specs#)  
 Performance Requirements  
 Go To:



12610 - Finish and Upholstery


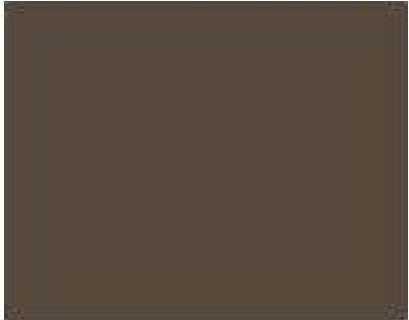
Uph.  
 Code

No.	Type	Location	Fabric Description
G	Two- Fabric	Exam Room Guest Chair	<p>Manufacturer: Designtex                      Style Name: Leafette                      No. &amp; Color: #2677-401 Delft                      Content: 100% Vinyl                      Finish: PreFixx Stain Resistant                      Backing: Polyester / Rayon Knit                      Width: 54"                      Repeat: None                      Weight: 32 ounces/linear yard                      Cleaning: Water-based/Solvent (WS) , Bleach Cleanable (4:1)                      Performance Specification: 100, 000 Wyzenbeek double rubs (CD); 5 Year Warranty                      For Further Performance Requirements Go To: <a href="http://www.designtex.com/leafette.html">http://www.designtex.com/leafette.html</a></p> <p><i>Seat:</i> Manufacturer: Momentum Design Studio                      Style Name: Silica Leather                      No. &amp; Color: Shadow                      Product No.: #09141691                      Content: 100% Silicone                      Backing: Polyester                      Width: 54"                      Weight: 1.57 lb./yard                      Maintenance: WS; Bleach Cleanable (4:1)                      Flame Resist. CA Bulletin 117 Sec. E                      Performance Specification: 210,000 D.R.; Reduced Environmental Impact: GREENGUARD Gold Certified; PVC Free                      For Further Performance Requirements Go To: <a href="https://www.memosamples.com/servlet/quickSearchSpecs.jsp?prodNo=09141471&amp;patternPos=&amp;colorPos=&amp;chairImgKey=&amp;backToPage=silica_leather_pr.shtml&amp;favorites=&amp;navDirection=&amp;searchType=specs#">https://www.memosamples.com/servlet/quickSearchSpecs.jsp?prodNo=09141471&amp;patternPos=&amp;colorPos=&amp;chairImgKey=&amp;backToPage=silica_leather_pr.shtml&amp;favorites=&amp;navDirection=&amp;searchType=specs#</a></p>



12610 - Finish and Upholstery

Uph.  
 Code

No.	Type	Location	Fabric Description
H	Single Fabric	Exam Stool	<p>Manufacturer: Humanscale                      Style Name: Lotus                      No. &amp; Color: #K302 Ochre                      Content: 100% Polyurethane Face, Nylon Backing                      Finish: Antibacterial / Antimicrobial Finish, AATCC Method 100 Stain and Water Resistant Finish</p>  <p>Antibacterial Finish: Staphylococcus aureus ATCC 6538, 99.68% inhibition of growth; Klebsiella pneumoniae ATCC 4352, 99.86% inhibition of growth                      Width: 54"                      Performance Specification: 350,000 double rubs, ASTM 4157, #10 cotton duck, Wyzenbeek 150,000 Double Rubs, ASTM 4157-02, Wire Mesh, Wyzenbeek                      For Further Performance Requirements Go To: <a href="https://www.humanscale.com/includes/moreInfo.cfm?section=2&amp;regionid=1&amp;langid=1&amp;preview=0&amp;pageoverride=/products/Moreinfo_Textiles_Lotus.cfm">https://www.humanscale.com/includes/moreInfo.cfm?section=2&amp;regionid=1&amp;langid=1&amp;preview=0&amp;pageoverride=/products/Moreinfo_Textiles_Lotus.cfm</a></p>
I	Single Fabric	Exam Stool	<p>Manufacturer: Humanscale                      Style Name: Lotus                      No. &amp; Color: #K624 Eggplant                      Content: 100% Polyurethane Face, Nylon Backing                      Finish: Antibacterial / Antimicrobial Finish, AATCC Method 100 Stain and Water Resistant Finish</p>  <p>Antibacterial Finish: Staphylococcus aureus ATCC 6538, 99.68% inhibition of growth; Klebsiella pneumoniae ATCC 4352, 99.86% inhibition of growth                      Width: 54"                      Performance Specification: 350,000 double rubs, ASTM 4157, #10 cotton duck, Wyzenbeek 150,000 Double Rubs, ASTM 4157-02, Wire Mesh, Wyzenbeek                      For Further Performance Requirements Go To: <a href="https://www.humanscale.com/includes/moreInfo.cfm?section=2&amp;regionid=1&amp;langid=1&amp;preview=0&amp;pageoverride=/products/Moreinfo_Textiles_Lotus.cfm">https://www.humanscale.com/includes/moreInfo.cfm?section=2&amp;regionid=1&amp;langid=1&amp;preview=0&amp;pageoverride=/products/Moreinfo_Textiles_Lotus.cfm</a></p>



12610 - Finish and Upholstery

Uph.  
 Code

No.	Type	Location	Fabric Description
J	Two-Fabric	Main Lobby	<p><i>Back:</i> Manufacturer: Architex                      Style Name: Montauk                      No. &amp; Color: Oyster                      Content: 67% Polyester, 33% Polyacrylic                      Finish: None                      Width: 57"                      Repeat: 10"v.; 7"h.                      Cleaning: WS (Bleach 1:10, Disinfectant Based Cleanable)                      Performance Specification: Exceeds 100,000 Double Rubs                      For Further Performance Requirements Go To: <a href="http://www.architex-ljh.com/cgi-bin/cob?CPN=iteminq&amp;SID=1836082182829&amp;SKU=99615">http://www.architex-ljh.com/cgi-bin/cob?CPN=iteminq&amp;SID=1836082182829&amp;SKU=99615</a></p> <p><i>Seat:</i> Manufacturer: Momentum Textiles                      Style Name: Silica Leather                      No. &amp; Color: Almond                      Product No.: #09141438                      Content: 100% Silicone                      Backing: Polyester                      Width: 54"                      Weight: 1.57 lb./yard                      Maintenance: WS; Bleach Cleanable (4:1)                      Flame Resist. CA Bulletin 117 Sec. E                      Performance Specification: 210,000 D.R.; Reduced Environmental Impact: GREENGUARD Gold Certified; PVC Free                      For Further Performance Requirements Go To: <a href="https://www.memosamples.com/servlet/quickSearchSpecs.jsp?prodNo=09141471&amp;patternPos=&amp;colorPos=&amp;chairImgKey=&amp;backToPage=silica_leather_pr.shtml&amp;favorites=&amp;navDirection=&amp;searchType=specs#">https://www.memosamples.com/servlet/quickSearchSpecs.jsp?prodNo=09141471&amp;patternPos=&amp;colorPos=&amp;chairImgKey=&amp;backToPage=silica_leather_pr.shtml&amp;favorites=&amp;navDirection=&amp;searchType=specs#</a></p>



12610 - Finish and Upholstery

Uph.  
 Code

No.	Type	Location	Fabric Description
K	Two- Fabric	Office Side Chair	<p><i>Back:</i> Manufacturer: Architex, Remede Collection                      Style Name: Thrive                      No. &amp; Color: Jojoba                      Content: 65% Polyester, 18% Rayon, 17% Cotton                      Finish: Crypton                      Backing: Crypton                      Width: 54"                      Repeat: 12.125" V - 14.625" H                      Weight: 1.130 lbs./yard                      Railroaded: No                      Cleaning Code: W                      Performance Specification: 100,000 Wyzenbeek; Lightfastness 40 hours AATCC 16; Firecodes CAL TB117, UFAC Class 1                      For Further Performance Requirements Go To: <a href="http://www.architex-ljh.com/cgi-bin/cob?CPN=collections&amp;SID=1246086913332&amp;COLL=RMU">http://www.architex-ljh.com/cgi-bin/cob?CPN=collections&amp;SID=1246086913332&amp;COLL=RMU</a></p> <p><i>Seat:</i> Manufacturer: Architex                      Style Name: Prescription                      No. &amp; Color: Libby                      Content: 100% Polyurethane (Face)                      Backing: 100% Polyester                      Finish: Write-Off (Ink Resistant, Antibacterial, Antimicrobial, Mildew Resistant)                      Width: 54"                      Repeat: None                      Weight: 1.310 lbs./yard                      Cleaning Code: W (1:5 Bleach Dilution)                      Performance Specification: 1,000,000 Wyzenbeek                      For Further Performance Requirements Go To: <a href="http://www.architex-ljh.com/cgi-bin/cob?CPN=iteminq&amp;SID=2236432619162&amp;SKU=97213">http://www.architex-ljh.com/cgi-bin/cob?CPN=iteminq&amp;SID=2236432619162&amp;SKU=97213</a></p>



12610 - Finish and Upholstery



Uph.  
 Code

No.	Type	Location	Fabric Description
L	Two- Fabric	Office Side Chair	<p><i>Back:</i> Manufacturer: Architex, Remede Collection                      Style Name: Thrive                      No. &amp; Color: Clary Sage                      Content: 65% Polyester, 18% Rayon, 17% Cotton                      Finish: Crypton                      Backing: Crypton                      Width: 54"                      Repeat: 12.125" V - 14.625" H                      Weight: 1.130 lbs./yard                      Railroaded: No                      Cleaning Code: W                      Performance Specification: 100,000 Wyzenbeek;                      Lightfastness 40 hours AATCC 16; Firecodes CAL TB117, UFAC Class 1                      For Further Performance Requirements Go To: <a href="http://www.architex-ljh.com/cgi-bin/cob?CPN=collections&amp;SID=1246086913332&amp;COLL=RMU">http://www.architex-ljh.com/cgi-bin/cob?CPN=collections&amp;SID=1246086913332&amp;COLL=RMU</a></p> <p><i>Seat:</i> Manufacturer: Architex                      Style Name: Prescription                      No. &amp; Color: Libby                      Content: 100% Polyurethane (Face)                      Backing: 100% Polyester                      Finish: Write-Off (Ink Resistant, Antibacterial, Antimicrobial, Mildew Resistant)                      Width: 54"                      Repeat: None                      Weight: 1.310 lbs./yard                      Cleaning Code: W (1:5 Bleach Dilution)                      Performance Specification: 1,000,000 Wyzenbeek                      For Further Performance Requirements Go To: <a href="http://www.architex-ljh.com/cgi-bin/cob?CPN=iteminq&amp;SID=2236432619162&amp;SKU=97213">http://www.architex-ljh.com/cgi-bin/cob?CPN=iteminq&amp;SID=2236432619162&amp;SKU=97213</a></p>



12610 - Finish and Upholstery

Uph.  
 Code

No.	Type	Location	Fabric Description
M	Two- Fabric	Office Side Chair	<p><i>Varies:</i> Manufacturer: Architex, Remede Collection                      Style Name: Thrive                      No. &amp; Color: Ravensara                      Content: 65% Polyester, 18% Rayon, 17% Cotton                      Finish: Crypton                      Backing: Crypton                      Width: 54"                      Repeat: 12.125" V - 14.625" H                      Weight: 1.130 lbs./yard                      Railroaded: No                      Cleaning Code: W                      Performance Specification: 100,000 Wyzenbeek;                      Lightfastness 40 hours AATCC 16; Firecodes CAL TB117, UFAC Class 1                      For Further Performance Requirements Go To: <a href="http://www.architex-ljh.com/cgi-bin/cob?CPN=collections&amp;SID=1246086913332&amp;COLL=RMU">http://www.architex-ljh.com/cgi-bin/cob?CPN=collections&amp;SID=1246086913332&amp;COLL=RMU</a></p> 
			<p><i>Varies:</i> Manufacturer: Architex                      Style Name: Prescription                      No. &amp; Color: Libby                      Content: 100% Polyurethane (Face)                      Backing: 100% Polyester                      Finish: Write-Off (Ink Resistant, Antibacterial, Antimicrobial, Mildew Resistant)                      Width: 54"                      Repeat: None                      Weight: 1.310 lbs./yard                      Cleaning Code: W (1:5 Bleach Dilution)                      Performance Specification: 1,000,000 Wyzenbeek                      For Further Performance Requirements Go To: <a href="http://www.architex-ljh.com/cgi-bin/cob?CPN=iteminq&amp;SID=2236432619162&amp;SKU=97213">http://www.architex-ljh.com/cgi-bin/cob?CPN=iteminq&amp;SID=2236432619162&amp;SKU=97213</a></p> 

12610 - Finish and Upholstery

Uph.  
 Code

No.	Type	Location	Fabric Description
N	Two- Fabric	Varies	<p><i>Back:</i> Manufacturer: Architex, Remede Collection                      Style Name: Thrive                      No. &amp; Color: Bark                      Content: 65% Polyester, 18% Rayon, 17% Cotton                      Finish: Crypton                      Backing: Crypton                      Width: 54"                      Repeat: 12.125" V - 14.625" H                      Weight: 1.130 lbs./yard                      Railroaded: No                      Cleaning Code: W                      Performance Specification: 100,000 Wyzenbeek;                      Lightfastness 40 hours AATCC 16; Firecodes CAL TB117, UFAC Class 1                      For Further Performance Requirements Go To: <a href="http://www.architex-ljh.com/cgi-bin/cob?CPN=collections&amp;SID=1246086913332&amp;COLL=RMU">http://www.architex-ljh.com/cgi-bin/cob?CPN=collections&amp;SID=1246086913332&amp;COLL=RMU</a></p> <p><i>Seat:</i> Manufacturer: Architex                      Style Name: Prescription                      No. &amp; Color: Libby                      Content: 100% Polyurethane (Face)                      Backing: 100% Polyester                      Finish: Write-Off (Ink Resistant, Antibacterial, Antimicrobial, Mildew Resistant)                      Width: 54"                      Repeat: None                      Weight: 1.310 lbs./yard                      Cleaning Code: W (1:5 Bleach Dilution)                      Performance Specification: 1,000,000 Wyzenbeek                      For Further Performance Requirements Go To: <a href="http://www.architex-ljh.com/cgi-bin/cob?CPN=iteminq&amp;SID=2236432619162&amp;SKU=97213">http://www.architex-ljh.com/cgi-bin/cob?CPN=iteminq&amp;SID=2236432619162&amp;SKU=97213</a></p>



12610 - Finish and Upholstery

Uph.  
 Code

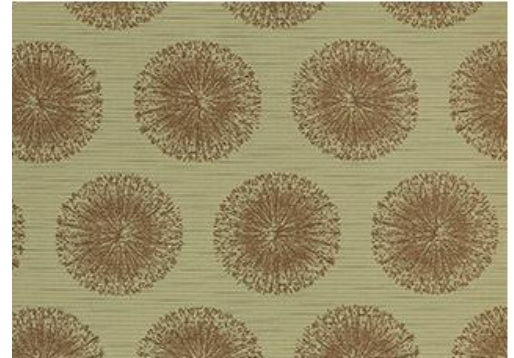
No.	Type	Location	Fabric Description
O	Two- Fabric	Lounge Chair	<p><i>Back / Chair</i> Manufacturer: Architex  <i>Remainder:</i> Collection: Believing                      Style Name: Inspire                      No. &amp; Color: Architecture                      Content: 67% Acrylic, 33% Polyester                      Finish/Backing: Crypton                      Width: 54"                      Repeat: 10-1/4"v., 14-1/2"h.                      Railroaded, reverse repeat.                      Weight: 1.160 lbs./yard                      Cleaning Code: WS (Bleach (1:10), Disinfectant and Peroxide-Based Cleaners)                      Lightfastness: 40 hours AATCC 16                      Performance Specification: 100,000 Wyzenbeek; Fire codes CAL 117-2013, NFPA 260, UFAC Class 1                      For Further Performance Requirements Go To: <a href="http://www.architex-ljh.com/cgi-bin/cob?CPN=iteming&amp;SID=1430505886121&amp;SKU=18149">http://www.architex-ljh.com/cgi-bin/cob?CPN=iteming&amp;SID=1430505886121&amp;SKU=18149</a></p> <p><i>Seat:</i> Style Name: Oath                      No. &amp; Color: Verbena                      Part No. #26-0010482-1035                      Content: 100% Polyester                      Backing: n/a                      Width: 55"                      Finish: Crypton                      Cleaning: W: Water-based cleaning agents or foam may be used                      Performance Specification: 204,000 D.R.; GREENBUARD Children &amp; Schools Indoor Air Quality Certified; Lightfastness: 40+ hours                      For Further Performance Requirements Go To: <a href="http://sitonit.net/textiles_main_page/textilesearch/details.26-0010482-1035.html">http://sitonit.net/textiles_main_page/textilesearch/details.26-0010482-1035.html</a></p>



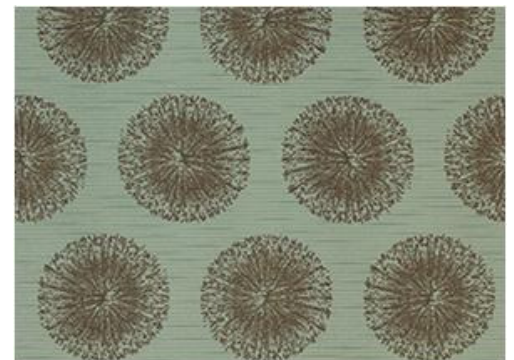
12610 - Finish and Upholstery

Uph.  
 Code

No.	Type	Location	Fabric Description
P	Single Fabric	Conference Nesting Chair	Upholstered Seat  Manufacturer: Momentum Design Studio Style Name: Silica Effloresce No. & Color: Valley Content: 100% Silicone Backing: Polyester Width: 54" Finish: n/a Repeat: 12-1/4"l. x 14-1/4"w. Weight: 1.79 lbs. Performance Specification: Bleach Cleanable 4:1 Solution Lightfastness: 200 Hours Class 4.5 PVC Free, GREENGUARD Gold Certified 500,000 Double Rubs  For Further Performance Requirements Go To: <a href="https://www.memosamples.com/silica_pr.shtml">https://www.memosamples.com/silica_pr.shtml</a>



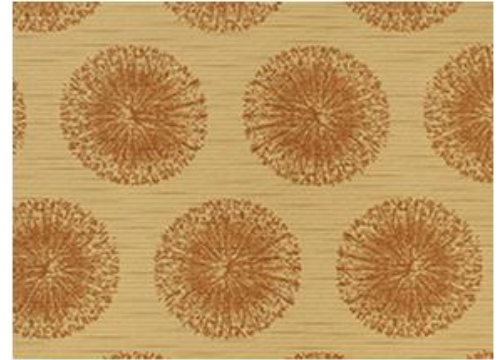
Q	Single Fabric	Conference Nesting Chair	Upholstered Seat  Manufacturer: Momentum Design Studio Style Name: Silica Effloresce No. & Color: Mist Content: 100% Silicone Backing: Polyester Width: 54" Finish: n/a Repeat: 12-1/4"l. x 14-1/4"w. Weight: 1.79 lbs. Performance Specification: Bleach Cleanable 4:1 Solution Lightfastness: 200 Hours Class 4.5 PVC Free, GREENGUARD Gold Certified 500,000 Double Rubs  For Further Performance Requirements Go To: <a href="https://www.memosamples.com/silica_pr.shtml">https://www.memosamples.com/silica_pr.shtml</a>
---	------------------	--------------------------	--



12610 - Finish and Upholstery

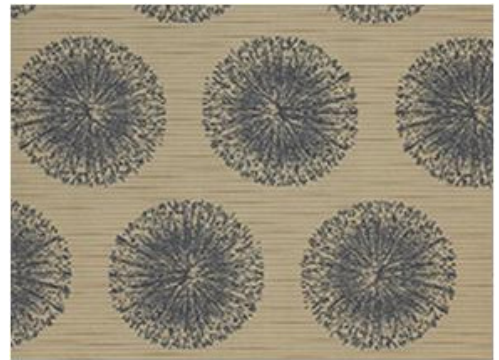
Uph.  
 Code

No.	Type	Location	Fabric Description
R	Single Fabric	Conference Nesting Chair	Upholstered Seat
			<p>Manufacturer: Momentum Design Studio</p> <p>Style Name: Silica Effloresce</p> <p>No. &amp; Color: Canyon</p> <p>Content: 100% Silicone</p> <p>Backing: Polyester</p> <p>Width: 54"</p> <p>Finish: n/a</p> <p>Repeat: 12-1/4"l. x 14-1/4"w.</p> <p>Weight: 1.79 lbs.</p> <p>Performance Specification: Bleach Cleanable 4:1 Solution                      Lightfastness: 200 Hours Class 4.5                      PVC Free, GREENGUARD Gold Certified                      500,000 Double Rubs</p> <p>For Further Performance Requirements Go To: <a href="https://www.memosamples.com/silica_pr.shtml">https://www.memosamples.com/silica_pr.shtml</a></p>



S Single Varies  
 Fabric



			<p>Manufacturer: Momentum Design Studio</p> <p>Style Name: Silica Effloresce</p> <p>No. &amp; Color: Cascade</p> <p>Content: 100% Silicone</p> <p>Backing: Polyester</p> <p>Width: 54"</p> <p>Finish: n/a</p> <p>Repeat: 12-1/4"l. x 14-1/4"w.</p> <p>Weight: 1.79 lbs.</p> <p>Performance Specification: Bleach Cleanable 4:1 Solution                      Lightfastness: 200 Hours Class 4.5                      PVC Free, GREENGUARD Gold Certified                      500,000 Double Rubs</p> <p>For Further Performance Requirements Go To: <a href="https://www.memosamples.com/silica_pr.shtml">https://www.memosamples.com/silica_pr.shtml</a></p>
--	--	--	--





12610 - Finish and Upholstery

Uph.  
 Code

No.	Type	Location	Fabric Description
T	Two- Fabric	Lounge Chair with Tablet Arm	<p>Manufacturer: Momentum Textiles</p> <p>Style Name: Silica</p> <p>No. &amp; Color: Sands</p> <p>Content: 100% Silicone</p> <p>Backing: Polyester</p> <p>Width: 54"</p> <p>Maintenance: WS; Bleach Cleanable (4:1)</p> <p>Flame Resist. CA Bulletin 117 Sec. E</p> <p>Performance 365,000 D.R.; GREENGUARD</p> <p>Specification: Gold Certified; PVC Free; Warranty 10 Years</p> <p>For Further <a href="https://www.memosamples.com/silica_pr.shtml">https://www.memosamples.com/silica_pr.shtml</a></p> <p>Performance Requirements Go To:</p>
			
			<p><i>Balance of Chair:</i> Manufacturer: Architex</p> <p>Style Name: Coexist</p> <p>No. &amp; Color: Interest</p> <p>Collection: Believing</p> <p>Content: 63% Acrylic, 32% Polyester, 5% Nylon</p> <p>Repeat: .25" V, None H</p> <p>Width: 54"</p> <p>Backing/Finish: Crypton</p> <p>Weight: 1.20 lbs./yard</p> <p>Lightfastness: 40 hours AATCC 16</p> <p>Cleaning Code: WS (10% bleach)</p> <p>Performance 100,000 Wyzenbeek; Fire codes CAL 117-2013, NFPA 260, UFAC Class 1</p> <p>Specification: For Further <a href="http://www.architex-ljh.com/cgi-bin/cob?CPN=iteminq&amp;SID=2349412522136&amp;SKU=18120">http://www.architex-ljh.com/cgi-bin/cob?CPN=iteminq&amp;SID=2349412522136&amp;SKU=18120</a></p> <p>Performance Requirements Go To:</p>
			

12610 - Finish and Upholstery



Uph.  
 Code

No.	Type	Location	Fabric Description
U	Two- Fabric	Lounge Chair	<p><i>Interior &amp; Exterior Back:</i> Manufacturer: Architex                      Collection: Believing                      Style Name: Inspire                      No. &amp; Color: Architecture                      Content: 67% Acrylic, 33% Polyester                      Finish/Backing: Crypton                      Width: 54"                      Repeat: 10-1/4"v., 14-1/2"h.                      Railroaded, reverse repeat.                      Weight: 1.160 lbs./yard                      Cleaning Code: WS (Bleach (1:10), Disinfectant and Peroxide-Based Cleaners)                      Lightfastness: 40 hours AATCC 16                      Performance Specification: 100,000 Wyzenbeek                      For Further Performance Requirements Go To: <a href="http://www.architex-ljh.com/cgi-bin/cob?CPN=iteminq&amp;SID=1430505886121&amp;SKU=18149">http://www.architex-ljh.com/cgi-bin/cob?CPN=iteminq&amp;SID=1430505886121&amp;SKU=18149</a></p> <p><i>Seat &amp; Bolster:</i> Manufacturer: Momentum Textiles                      Style Name: Silica Leather                      No. &amp; Color: Almond                      Product No.: #09141438                      Content: 100% Silicone                      Backing: Polyester                      Width: 54"                      Weight: 1.57 lb./yard                      Maintenance: WS; Bleach Cleanable (4:1)                      Flame Resist. CA Bulletin 117 Sec. E                      Performance Specification: 210,000 D.R.; Reduced Environmental Impact: GREENGUARD Gold Certified; PVC Free                      For Further Performance Requirements Go To: <a href="https://www.memosamples.com/servlet/quickSearchSpecs.jsp?prodNo=09141471&amp;patternPos=&amp;colorPos=&amp;chairImgKey=&amp;backToPage=silica_leather_pr.shtml&amp;favorites=&amp;navDirection=&amp;searchType=specs#">https://www.memosamples.com/servlet/quickSearchSpecs.jsp?prodNo=09141471&amp;patternPos=&amp;colorPos=&amp;chairImgKey=&amp;backToPage=silica_leather_pr.shtml&amp;favorites=&amp;navDirection=&amp;searchType=specs#</a></p>



12610 - Finish and Upholstery

Uph.  
 Code

No.	Type	Location	Fabric Description
V	Two- Fabric	Lounge Seating	<p><i>Back:</i> Manufacturer: Momentum Textiles                      Style Name: Drift                      Product No: #09128293                      No. &amp; Color: Semolina                      Content: 100% Repreve Solution Dyed Recycled Nylon                      Backing: Nylon                      Width: 54"                      Flame Resist.: CA Bulletin 117 2013                      Maintenance: WS; Bleach Cleanable (4:1)                      Repeat: 18-3/4" L, 14" W                      Performance Specification: 100,000+ double rubs (Wyzenbeek)                      For Further Performance Requirements Go To: <a href="http://healthcaretextiles.com/textiles/drift">http://healthcaretextiles.com/textiles/drift</a></p> 
			<p><i>Seat:</i> Manufacturer: Momentum Textiles                      Style Name: Silica Leather                      No. &amp; Color: Almond                      Product No.: #09141438                      Content: 100% Silicone                      Backing: Polyester                      Width: 54"                      Weight: 1.57 lb./yard                      Maintenance: WS; Bleach Cleanable (4:1)                      Flame Resist. CA Bulletin 117 Sec. E                      Performance Specification: 210,000 D.R.; Reduced Environmental Impact: GREENGUARD Gold Certified; PVC Free                      For Further Performance Requirements Go To: <a href="https://www.memosamples.com/servlet/quickSearchSpecs.jsp?prodNo=09141471&amp;patternPos=&amp;colorPos=&amp;chairImgKey=&amp;backToPage=silica_leather_pr.shtml&amp;favorites=&amp;navDirection=&amp;searchType=specs#">https://www.memosamples.com/servlet/quickSearchSpecs.jsp?prodNo=09141471&amp;patternPos=&amp;colorPos=&amp;chairImgKey=&amp;backToPage=silica_leather_pr.shtml&amp;favorites=&amp;navDirection=&amp;searchType=specs#</a></p> 

12610 - Finish and Upholstery

Uph.  
 Code

No.	Type	Location	Fabric Description
-----	------	----------	--------------------

W Two- Lounge Seating  
 Fabric

*Back:* Manufacturer: Momentum Textiles  
 Style Name: Drift  
 Product No.: #09128293  
 No. & Color: Semolina  
 Content: 100% Repreve Solution Dyed  
 Recycled Nylon  
 Backing: Nylon  
 Width: 54"  
 Flame Resist.: CA Bulletin 117 2013  
 Maintenance: WS; Bleach Cleanable (4:1)  
 Repeat: 18-3/4" L, 14" W  
 Performance: 100,000+ double rubs (Wyzenbeek)  
 Specification:  
 For Further <http://healthcaretextiles.com/textiles/drift>  
 Performance  
 Requirements  
 Go To:

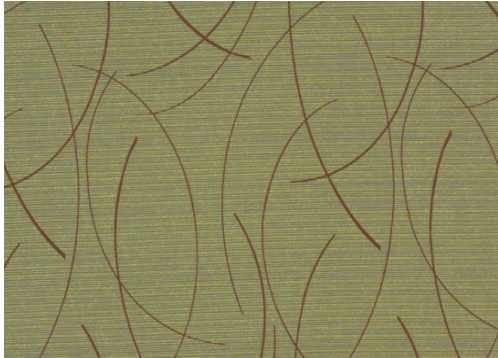



*Seat:* Manufacturer: Momentum Textiles  
 Style Name: Silica Leather  
 No. & Color: Denim  
 Product No.: #09141482  
 Content: 100% Silicone  
 Backing: Polyester  
 Width: 54"  
 Weight: 1.57 lb./yard  
 Maintenance: WS; Bleach Cleanable (4:1)  
 Flame Resist. CA Bulletin 117 Sec. E  
 Performance: 210,000 D.R.; Reduced Environmental Impact:  
 Specification: GREENGUARD Gold Certified; PVC Free  
 For Further [https://www.memosamples.com/servlet/quickSearchSpecs.jsp?prodNo=09141471&patternPos=&colorPos=&chairImgKey=&backToPage=silica\\_leather\\_pr.shtml&favorites=&navDirection=&searchType=specs#](https://www.memosamples.com/servlet/quickSearchSpecs.jsp?prodNo=09141471&patternPos=&colorPos=&chairImgKey=&backToPage=silica_leather_pr.shtml&favorites=&navDirection=&searchType=specs#)  
 Performance  
 Requirements  
 Go To:




12610 - Finish and Upholstery

Uph.  
 Code

No.	Type	Location	Fabric Description
X	Two- Fabric	Lounge Chair	<p><i>Interior &amp; Exterior Back:</i> Manufacturer: Momentum Textiles                      Style Name: Drift                      No. &amp; Color: Verdigris                      Content: 100% Repreve Solution Dyed Recycled Nylon                      Backing: Nylon                      Width: 54"                      Flame Resist.: CA Bulletin 117 2013                      Maintenance: WS; Bleach Cleanable (4:1)                      Repeat: 18-3/4" L, 14" W                      Performance: 100,000+ double rubs (Wyzenbeek)                      Specification:                      For Further Performance Requirements Go To: <a href="http://healthcaretextiles.com/textiles/drift">http://healthcaretextiles.com/textiles/drift</a></p> 
	<i>Seat &amp; Bolster:</i>		<p>Manufacturer: Momentum Textiles                      Style Name: Silica                      No. &amp; Color: Aqua                      Content: 100% Silicone                      Backing: Polyester                      Width: 54"                      Maintenance: WS; Bleach Cleanable (4:1)                      Flame Resist.: CA Bulletin 117 Sec. E                      Performance: 365,000 D.R.; GREENGUARD                      Specification: Gold Certified; PVC Free; Warranty 10 Years                      For Further Performance Requirements Go To: <a href="https://www.memosamples.com/silica_pr.shtml">https://www.memosamples.com/silica_pr.shtml</a></p> 

12610 - Finish and Upholstery

Uph.  
 Code

No.	Type	Location	Fabric Description
Y	Two-Fabric	Lounge Seating	<p><i>Back:</i> Manufacturer: Designtex                      Style Name: #3678-403 Lattice                      No. &amp; Color: Midnight                      Content: 100% Preconsumer Recycled Solution Dyed Nylon                      Finish: Stain Repellent                      Width: 54"                      Backing: Acrylic                      Cleaning: WS Bleach Cleanable (4:1)                      Repeat: V-7" x H-7"                      Weight Per Unit 17 ounces/linear yard                      Flammability: CA TB 117-2013 , NFPA 260                      Lightfastness: 40 Hours                      Performance Specification: 100,000 Wyzenbeek, 5 Year Warranty; Ships Carbon Neutral                      For Further Performance Requirements Go To: <a href="http://www.designtex.com/lattice-10.html">http://www.designtex.com/lattice-10.html</a></p> 
			<p><i>Seat:</i> Manufacturer: Architex                      Style Name: Fit                      No. &amp; Color: Sky                      Content: 100% Vinyl                      Finish: Write-Off (ink resistant); Anti-Bacterial/Anti-Microbial (AATCC147)                      Width: 54"                      Backing: 100% Polyester                      Cleaning: WS (10% bleach)                      Weight: 1.990 lbs./yard                      Flammability: Cal TB 117, UFAC Class 1, IMO                      Lightfastness: 1,000 hours AATCC 16                      Performance Specification: 300,000 Wyzenbeek                      For Further Performance Requirements Go To: <a href="http://www.architex-ljh.com/cgi-bin/cob?CPN=iteminq&amp;SID=0753567800919&amp;SKU=93672">http://www.architex-ljh.com/cgi-bin/cob?CPN=iteminq&amp;SID=0753567800919&amp;SKU=93672</a></p> 

12610 - Finish and Upholstery

Uph.  
 Code

No.	Type	Location	Fabric Description
Z	Two-	Lounge Chair with Tablet Arm	
	Fabric		
	<i>Inside Back /</i>	Manufacturer:	Momentum Design Studio
	<i>Top of Seat:</i>	Style Name:	Silica Leather
		No. & Color:	Barley
		Product No.:	#09141460
		Content:	100% Silicone
		Backing:	Polyester
		Width:	54"
		Weight:	1.57 lb./yard
		Maintenance:	WS; Bleach Cleanable (4:1)
		Flame Resist.	CA Bulletin 117 Sec. E
		Performance	210,000 D.R.; Reduced Environmental Impact:
		Specification:	GREENGUARD Gold Certified; PVC Free
		For Further	<a href="https://www.memosamples.com/servlet/quickSearchSpecs.jsp?prodNo=09141471&amp;patternPos=&amp;colorPos=&amp;chairImgKey=&amp;backToPage=silica">https://www.memosamples.com/servlet/quickSearchSpecs.jsp?prodNo=</a>
		Performance	<a href="https://www.memosamples.com/servlet/quickSearchSpecs.jsp?prodNo=09141471&amp;patternPos=&amp;colorPos=&amp;chairImgKey=&amp;backToPage=silica">09141471&amp;patternPos=&amp;colorPos=&amp;chairImgKey=&amp;backToPage=silica</a>

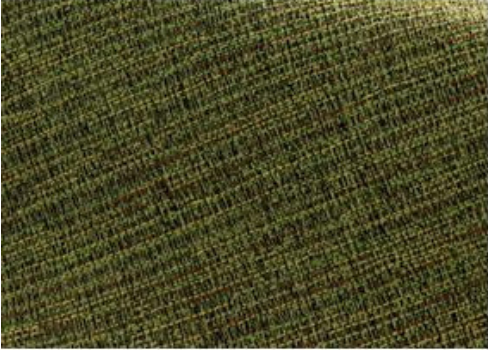



	<i>Balance of Chair:</i>	Manufacturer:	Architex
		Collection:	Believing
		Style Name:	Coexist
		No. & Color:	Kind
		Content:	63% Acrylic, 32% Polyester, 5% Nylon
		Repeat:	.25" V, None H
		Width:	54"
		Backing/Finish:	Crypton
		Weight:	1.20 lbs./yard
		Lightfastness:	40 hours AATCC 16
		Cleaning Code:	WS (10% bleach)
		Performance	100,000 Wyzenbeek; Fire codes CAL 117-2013, NFPA 260, UFAC Class 1
		Specification:	
		For Further	<a href="http://www.architex-ljh.com/cgi-bin/cob?CPN=iteminq&amp;SID=2349412522136&amp;SKU=18120">http://www.architex-ljh.com/cgi-</a>
		Performance	<a href="http://www.architex-ljh.com/cgi-bin/cob?CPN=iteminq&amp;SID=2349412522136&amp;SKU=18120">bin/cob?CPN=iteminq&amp;SID=2349412522136&amp;SKU=18120</a>
		Requirements	
		Go To:	



12610 - Finish and Upholstery

Uph.  
 Code

No.	Type	Location	Fabric Description
AA	Two-Fabric	Lounge Seating	<p><b>Back:</b> Manufacturer: Designtex                      Style Name: #2845-903 Tumbleweed                      No. &amp; Color: Twilight                      Content: 46% Polyester (Postconsumer Recycled), 54% Polyester (Preconsumer Recycled)                      Finish: Crypton Green                      Width: 54"                      Backing: Fluid Barrier                      Cleaning: Water-based Modified (WM) , Bleach Cleanable (10:1)                      Repeat: V .25 inches x H .25 inches                      Flammability: CA TB 117-2013 , NFPA 260                      Performance Specification: 100,000 Wyzenbeek double rubs (CD); Lightfastness: 40 hours; 5 Years Warranty; Ships Carbon Neutral                      For Further Performance Requirements Go To: <a href="http://www.designtex.com/tumbleweed.html">http://www.designtex.com/tumbleweed.html</a></p>  <p><b>Seat:</b> Manufacturer: Momentum Design Studio                      Style Name: Silica Leather                      No. &amp; Color: Barley                      Product No.: #09141460                      Content: 100% Silicone                      Backing: Polyester                      Width: 54"                      Weight: 1.57 lb./yard                      Maintenance: WS; Bleach Cleanable (4:1)                      Flame Resist. CA Bulletin 117 Sec. E                      Performance Specification: 210,000 D.R.; Reduced Environmental Impact: GREENGUARD Gold Certified; PVC Free                      For Further Performance Requirements Go To: <a href="https://www.memosamples.com/servlet/quickSearchSpecs.jsp?prodNo=09141471&amp;patternPos=&amp;colorPos=&amp;chairImgKey=&amp;backToPage=silica_leather_pr.shtml&amp;favorites=&amp;navDirection=&amp;searchType=specs#">https://www.memosamples.com/servlet/quickSearchSpecs.jsp?prodNo=09141471&amp;patternPos=&amp;colorPos=&amp;chairImgKey=&amp;backToPage=silica_leather_pr.shtml&amp;favorites=&amp;navDirection=&amp;searchType=specs#</a></p> 



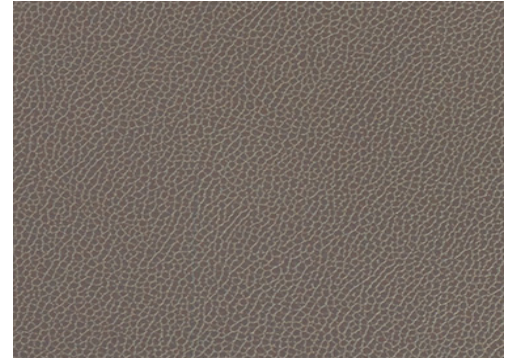
12610 - Finish and Upholstery

Uph.  
 Code

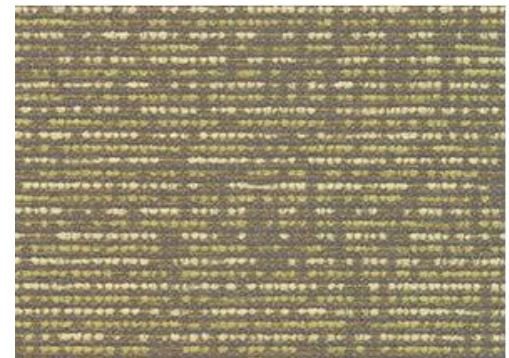
No.	Type	Location	Fabric Description
BB	NOT USED		

CC Two- Lounge Chair with Tablet Arm  
 Fabric

*Inside Back /* Manufacturer: Momentum Design Studio  
*Top of Seat:* Style Name: Silica Leather  
 No. & Color: Shadow  
 Product No.: #09141691  
 Content: 100% Silicone  
 Backing: Polyester  
 Width: 54"  
 Weight: 1.57 lb./yard  
 Maintenance: WS; Bleach Cleanable (4:1)  
 Flame Resist. CA Bulletin 117 Sec. E  
 Performance 210,000 D.R.; Reduced Environmental Impact:  
 Specification: GREENGUARD Gold Certified; PVC Free  
 For Further <https://www.memosamples.com/servlet/quickSearchSpecs.jsp?prodNo=09141471&patternPos=&colorPos=&chairImgKey=&backToPage=silica>  
 Performance [I](https://www.memosamples.com/servlet/quickSearchSpecs.jsp?prodNo=09141471&patternPos=&colorPos=&chairImgKey=&backToPage=silica)





*Balance of Chair:* Manufacturer: Architex  
 Style Name: Coexist  
 No. & Color: Peace  
 Collection: Believing  
 Content: 63% Acrylic, 32% Polyester,  
 5% Nylon  
 Repeat: .25" V, None H  
 Width: 54"  
 Backing/Finish: Crypton  
 Weight: 1.20 lbs./yard  
 Lightfastness: 40 hours AATCC 16  
 Cleaning Code: WS (10% bleach)  
 Performance 100,000 Wyzenbeek; Fire codes CAL 117-2013, NFPA 260, UFAC Class 1  
 Specification:  
 For Further [http://www.architex-ljh.com/cgi-](http://www.architex-ljh.com/cgi-bin/cob?CPN=iteminq&SID=2349412522136&SKU=18120)  
 Performance [bin/cob?CPN=iteminq&SID=2349412522136&SKU=18120](http://www.architex-ljh.com/cgi-bin/cob?CPN=iteminq&SID=2349412522136&SKU=18120)  
 Requirements  
 Go To:



12610 - Finish and Upholstery

Uph.  
 Code

No.	Type	Location	Fabric Description
DD	Two- Fabric	Lounge Chair	<p><i>Interior &amp; Exterior Back:</i> Manufacturer: Designtex                      Style Name: #3678-501 Lattice                      No. &amp; Color: Meadow                      Content: 100% Preconsumer Recycled Solution Dyed Nylon                      Finish: Stain Repellent                      Width: 54"                      Backing: Acrylic                      Cleaning: WS Bleach Cleanable (4:1)                      Repeat: V-7" x H-7"                      Weight Per Unit 17 ounces/linear yard                      Flammability: CA TB 117-2013 , NFPA 260                      Lightfastness: 40 Hours                      Performance Specification: 100,000 Wyzenbeek, 5 Year Warranty; Ships Carbon Neutral                      For Further Performance Requirements Go To: <a href="http://www.designtex.com/lattice-10.html">http://www.designtex.com/lattice-10.html</a></p> 
	<i>Seat &amp; Bolster:</i>		<p>Manufacturer: Designtex                      Style Name: #2845-503 Tumbleweed                      No. &amp; Color: Poplar                      Product No.: 46% Polyester (Postconsumer Recycled), 54% Polyester (Preconsumer Recycled)                      Content: Crypton Green                      Backing: 54"                      Width: Fluid Barrier                      Weight: Water-based Modified (WM) , Bleach Cleanable (10:1)                      Maintenance: V .25 inches x H .25 inches                      Flame Resist. CA TB 117-2013 , NFPA 260                      Performance Specification: 100, 000 Wyzenbeek double rubs (CD); Lightfastness: 40 hours; 5 Years Warranty; Ships Carbon Neutral                      For Further Performance Requirements Go To: <a href="http://www.designtex.com/tumbleweed.html">http://www.designtex.com/tumbleweed.html</a></p> 

12610 - Finish and Upholstery

Uph.  
 Code

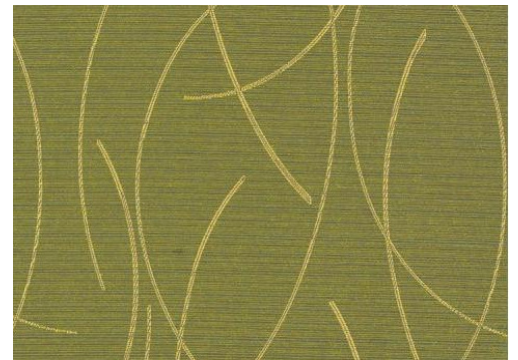
No.	Type	Location	Fabric Description
EE	NOT USED		

FF Two- Lounge Chair with Tablet Arm  
 Fabric

*Inside Back /* Manufacturer: Momentum Design Studio  
*Top of Seat:* Style Name: Silica Leather  
 No. & Color: Shadow  
 Product No.: #09141691  
 Content: 100% Silicone  
 Backing: Polyester  
 Width: 54"  
 Weight: 1.57 lb./yard  
 Maintenance: WS; Bleach Cleanable (4:1)  
 Flame Resist. CA Bulletin 117 Sec. E  
 Performance 210,000 D.R.; Reduced Environmental Impact:  
 Specification: GREENGUARD Gold Certified; PVC Free  
 For Further [https://www.memosamples.com/servlet/quickSearchSpecs.jsp?prodNo=09141471&patternPos=&colorPos=&chairImgKey=&backToPage=silica\\_leather\\_pr.shtml&favorites=&navDirection=&searchType=specs#](https://www.memosamples.com/servlet/quickSearchSpecs.jsp?prodNo=09141471&patternPos=&colorPos=&chairImgKey=&backToPage=silica_leather_pr.shtml&favorites=&navDirection=&searchType=specs#)  
 Performance Requirements  
 Go To:



*Balance of Chair:* Manufacturer: Momentum Textiles  
 Style Name: Drift  
 Product No.: #09128238  
 No. & Color: Eucalyptus  
 Content: 100% Repreve Solution Dyed Recycled Nylon  
 Backing: Nylon  
 Width: 54"  
 Flame Resist.: CA Bulletin 117 2013  
 Maintenance: WS; Bleach Cleanable (4:1)  
 Repeat: 18-3/4" L, 14" W  
 Performance 100,000+ double rubs  
 Specification: (Wyzenbeek)  
 For Further <http://healthcaretextiles.com/textiles/drift>  
 Performance Requirements  
 Go To:



12610 - Finish and Upholstery

Uph.  
 Code

No.	Type	Location	Fabric Description
-----	------	----------	--------------------

GG Two- Bed / Overnight Bed  
 Fabric

*Back & Sides of Bed:* Manufacturer: Momentum Design Studio

Style Name: Silica Effloresce

No. & Color: Canyon

Content: 100% Silicone

Backing: Polyester

Width: 54"

Finish: n/a

Repeat: 12-1/4"l. x 14-1/4"w.

Weight: 1.79 lbs.

Performance: Bleach Cleanable 4:1 Solution

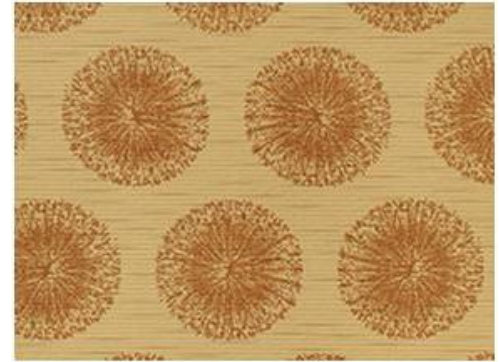
Specification: Lightfastness: 200 Hours Class 4.5

For Further [https://www.memosamples.com/silica\\_pr.shtml](https://www.memosamples.com/silica_pr.shtml)

Performance

Requirements

Go To:



*Seat of Bed:* Manufacturer: Momentum Design Studio

Style Name: Silica Leather

No. & Color: Driftwood

Product No.: #09141504

Content: 100% Silicone

Backing: Polyester

Width: 54"

Weight: 1.57 lb./yard

Maintenance: WS; Bleach Cleanable (4:1)

Flame Resist. CA Bulletin 117 Sec. E

Performance: 210,000 D.R.; Reduced Environmental Impact:

Specification: GREENGUARD Gold Certified; PVC Free

For Further [https://www.memosamples.com/servlet/quickSearchSpecs.jsp?prodNo=](https://www.memosamples.com/servlet/quickSearchSpecs.jsp?prodNo=09141471&patternPos=&colorPos=&chairImgKey=&backToPage=silica_l)

[09141471&patternPos=&colorPos=&chairImgKey=&backToPage=silica\\_l](https://www.memosamples.com/servlet/quickSearchSpecs.jsp?prodNo=09141471&patternPos=&colorPos=&chairImgKey=&backToPage=silica_l)

[eather\\_pr.shtml&favorites=&navDirection=&searchType=specs#](https://www.memosamples.com/servlet/quickSearchSpecs.jsp?prodNo=09141471&patternPos=&colorPos=&chairImgKey=&backToPage=silica_l)

Requirements

Go To:



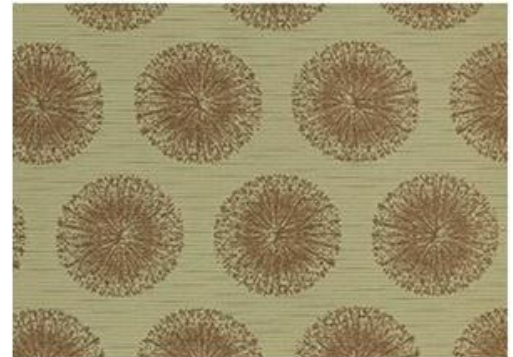
12610 - Finish and Upholstery

Uph.  
 Code

No.	Type	Location	Fabric Description
-----	------	----------	--------------------

HH Two-  
 Fabric Varies

*Varies:* Manufacturer: Momentum Design Studio  
 Style Name: Silica Effloresce  
 No. & Color: Valley  
 Content: 100% Silicone  
 Backing: Polyester  
 Width: 54"  
 Finish: n/a  
 Repeat: 12-1/4"l. x 14-1/4"w.  
 Weight: 1.79 lbs.  
 Performance Specification: Bleach Cleanable 4:1 Solution  
 Lightfastness: 200 Hours Class 4.5  
 PVC Free, GREENGUARD Gold Certified  
 500,000 Double Rubs  
 For Further Performance Requirements Go To: [https://www.memosamples.com/silica\\_pr.shtml](https://www.memosamples.com/silica_pr.shtml)

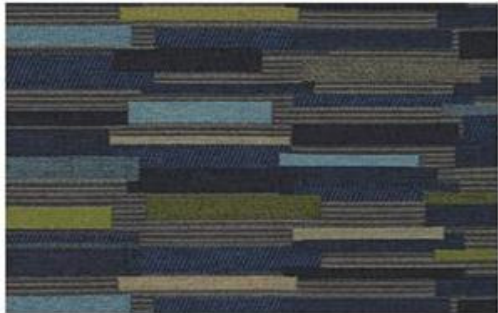



*Varies:* Manufacturer: Momentum Design Studio  
 Style Name: Silica Leather  
 No. & Color: Earthen  
 Product No.: #09141526  
 Content: 100% Silicone  
 Backing: Polyester  
 Width: 54"  
 Weight: 1.57 lb./yard  
 Maintenance: WS; Bleach Cleanable (4:1)  
 Flame Resist. CA Bulletin 117 Sec. E  
 Performance Specification: 210,000 D.R.; Reduced Environmental Impact:  
 GREENGUARD Gold Certified;  
 PVC Free  
 For Further Performance Requirements Go To: [https://www.memosamples.com/servlet/quickSearchSpecs.jsp?prodNo=09141471&patternPos=&colorPos=&chairImgKey=&backToPage=silica\\_leather\\_pr.shtml&favorites=&navDirection=&searchType=specs#](https://www.memosamples.com/servlet/quickSearchSpecs.jsp?prodNo=09141471&patternPos=&colorPos=&chairImgKey=&backToPage=silica_leather_pr.shtml&favorites=&navDirection=&searchType=specs#)



12610 - Finish and Upholstery

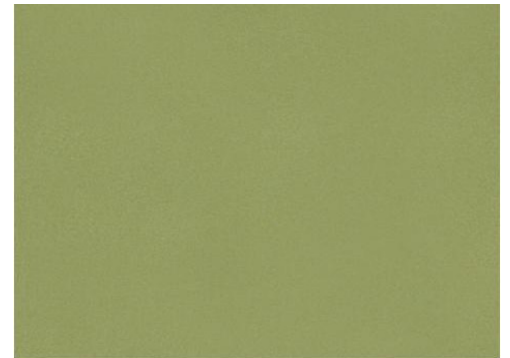
Uph.  
 Code

No.	Type	Location	Fabric Description
II	Two-Fabric	Waiting/Interview/Lounge Areas	<p>Manufacturer: Designtex                      Style Name: Jaunt                      No. &amp; Color: #3568-402 Baltic                      Content: 100% Preconsumer Recycled Solution Dyed Nylon                      Finish: Stain Repellent                      Backing: Acrylic                      Width: 54"                      Repeat: 9-1/4"v.; 13-3/4"h.                      Weight: 15-3/4 ounces/linear yard                      Cleaning: Water-based/Solvent (WS) , Bleach Cleanable (4:1)                      Performance Specification: 1,000,000 Wyzenbeek; 10 Year Warranty                      For Further Performance Requirements Go To: <a href="http://www.designtex.com/jaunt.html">http://www.designtex.com/jaunt.html</a></p> 
	Seat:		<p>Manufacturer: Designtex                      Style Name: Luster                      No. &amp; Color: #3701-102 Arena                      Content: 100% Polurethane                      Finish: Cleangene + Silicone                      Backing: Polyester Knit                      Width: 54"                      Weight: 18 ounces/linear yard                      Flammability: CA TB 117-2013 , NFPA 260                      Cleanability: WS; Bleach Cleanable (4:1)                      Performance Specification: 100,000 Wyzenbeek, 5 Year Warranty; Lightfastness - 200 Hours; Ships Carbon Neutral                      For Further Performance Requirements Go To: <a href="http://www.designtex.com/luster-21.html">http://www.designtex.com/luster-21.html</a></p> 

12610 - Finish and Upholstery

Uph.  
 Code

No.	Type	Location	Fabric Description
JJ	Two-Fabric	Patient Lounge Seating	<p><i>Back:</i> Manufacturer: Momentum Textiles                      Style Name: Proximity                      No. &amp; Color: Blueprint                      Product No.: #09128150                      Content: 100% Repreve Solution Dyed Recycled Nylon                      Backing: Nylon                      Width: 54"                      Repeat: 7"L, 8"W                      Weight: 1.12 Lbs.                      Maintenance: WS; Bleach cleanable (4:1)                      Flame Resist. CA Bulletin 117 2013; UFAC Class 1; NFPA 260 Class 1                      Performance Specification: 100,000 DR; Recycled Fiber Content; GREENGUARD Gold Certified                      For Further Performance Requirements Go To: <a href="https://www.memosamples.com/servlet/quickSearchSpecs.jsp?prodNo=09128194&amp;patternPos=192&amp;colorPos=6&amp;chairImgKey=&amp;backToPage=/servlet/quickSearch.jsp&amp;favorites=&amp;navDirection=detail&amp;searchType=library#">https://www.memosamples.com/servlet/quickSearchSpecs.jsp?prodNo=09128194&amp;patternPos=192&amp;colorPos=6&amp;chairImgKey=&amp;backToPage=/servlet/quickSearch.jsp&amp;favorites=&amp;navDirection=detail&amp;searchType=library#</a></p> <p><i>Seat:</i> Manufacturer: Momentum Textiles                      Style Name: Silica                      No. &amp; Color: Dewpoint                      Content: 100% Silicone                      Backing: Polyester                      Width: 54"                      Maintenance: WS; Bleach Cleanable (4:1)                      Flame Resist. CA Bulletin 117 Sec. E                      Performance Specification: 365,000 D.R.; GREENGUARD Gold Certified; PVC Free; Warranty 10 Years                      For Further Performance Requirements Go To: <a href="https://www.memosamples.com/silica_pr.shtml">https://www.memosamples.com/silica_pr.shtml</a></p>



12610 - Finish and Upholstery

Uph.  
 Code

No.	Type	Location	Fabric Description
KK	Two-Fabric	Patient Lounge Seating	<p><i>Back:</i> Manufacturer: Momentum Textiles                      Style Name: Proximity                      No. &amp; Color: Poolside                      Product No.: #09128194                      Content: 100% Repreve Solution Dyed Recycled Nylon                      Backing: Nylon                      Width: 54"                      Repeat: 7"L, 8"W                      Weight: 1.12 Lbs.                      Maintenance: WS; Bleach cleanable (4:1)                      Flame Resist. CA Bulletin 117 2013; UFAC Class 1; NFPA 260 Class 1                      Performance Specification: 100,000 DR; Recycled Fiber Content; GREENGUARD Gold Certified                      For Further Performance Requirements Go To: <a href="https://www.memosamples.com/servlet/quickSearchSpecs.jsp?prodNo=09128194&amp;patternPos=192&amp;colorPos=6&amp;chairImgKey=&amp;backToPage=/servlet/quickSearch.jsp&amp;favorites=&amp;navDirection=detail&amp;searchType=library#">https://www.memosamples.com/servlet/quickSearchSpecs.jsp?prodNo=09128194&amp;patternPos=192&amp;colorPos=6&amp;chairImgKey=&amp;backToPage=/servlet/quickSearch.jsp&amp;favorites=&amp;navDirection=detail&amp;searchType=library#</a></p> <p><i>Seat:</i> Manufacturer: Momentum Textiles                      Style Name: Beeline                      Product No.: #09125642                      No. &amp; Color: Sprout                      Content: 100% Polyurethane / PVC Free                      Backing: Polyester                      Finish: Anti-Microbial, Anti-Bacterial                      Width: 54"                      Maintenance: W; Bleach Cleanable (4:1)                      Flame Resist. CA Bulletin 117 2013; NFPA 260 Class 1                      Weight: 1.32 lb.                      Performance Specification: 500,000 D.R., GREENGUARD Certified; PVC Free                      For Further Performance Requirements Go To: <a href="https://www.memosamples.com/servlet/quickSearchSpecs.jsp?prodNo=09125576&amp;patternPos=24&amp;colorPos=8&amp;chairImgKey=&amp;backToPage=/servlet/quickSearch.jsp&amp;favorites=&amp;navDirection=detail&amp;searchType=library#">https://www.memosamples.com/servlet/quickSearchSpecs.jsp?prodNo=09125576&amp;patternPos=24&amp;colorPos=8&amp;chairImgKey=&amp;backToPage=/servlet/quickSearch.jsp&amp;favorites=&amp;navDirection=detail&amp;searchType=library#</a></p>





12610 - Finish and Upholstery

Uph.  
 Code

No.	Type	Location	Fabric Description
LL	Two-Fabric	Lounge Areas	<p><i>Back:</i> Manufacturer: Designtex                      Style Name: Jaunt                      No. &amp; Color: #3568-501 Succulent                      Content: 100% Preconsumer Recycled Solution Dyed Nylon                      Finish: Stain Repellent                      Backing: Acrylic                      Width: 54"                      Repeat: 9-1/4"v.; 13-3/4"h.                      Weight: 15-3/4 ounces/linear yard                      Cleaning: Water-based/Solvent (WS) , Bleach Cleanable (4:1)                      Performance Specification: 1,000,000 Wyzenbeek; 10 Year Warranty                      For Further Performance Requirements Go To: <a href="http://www.designtex.com/jaunt.html">http://www.designtex.com/jaunt.html</a></p> 
			<p><i>Seat:</i> Manufacturer: Momentum Textiles                      Style Name: Silica Tech                      No. &amp; Color: Mineralize                      Product No.: #09127930                      Content: 100% Silicone                      Backing: Polyester                      Width: 54"                      Weight: 1.74 lb.                      Maintenance: WS - Water-Based Cleaning Agents Or Foam; Bleach Cleanable (4:1)                      Flame Resist. CA Bulletin 117 2013; UFAC Class 1; NFPA 260 Class 1                      Performance Specification: 270,000 D.R., GREENGUARD Gold Certified; PVC Free                      For Further Performance Requirements Go To: <a href="https://www.memosamples.com/servlet/quickSearchSpecs.jsp?prodNo=09127875&amp;patternPos=241&amp;colorPos=1&amp;chairImgKey=&amp;backToPage=/servlet/quickSearch.jsp&amp;favorites=&amp;navDirection=detail&amp;searchType=library#">https://www.memosamples.com/servlet/quickSearchSpecs.jsp?prodNo=09127875&amp;patternPos=241&amp;colorPos=1&amp;chairImgKey=&amp;backToPage=/servlet/quickSearch.jsp&amp;favorites=&amp;navDirection=detail&amp;searchType=library#</a></p> 

12610 - Finish and Upholstery

Uph.  
 Code

No.	Type	Location	Fabric Description
-----	------	----------	--------------------

MM	Two-Fabric	Exam Room Patient Chair	
----	------------	-------------------------	--

*Back:* Manufacturer: Designtex  
 Style Name: Jaunt  
 No. & Color: #3568-102 Sandstone  
 Content: 100% Preconsumer Recycled Solution Dyed Nylon  
 Finish: Stain Repellent  
 Backing: Acrylic  
 Width: 54"  
 Repeat: 9-1/4"v.; 13-3/4"h.  
 Weight: 15-3/4 ounces/linear yard  
 Cleaning: Water-based/Solvent (WS) , Bleach Cleanable (4:1)  
 Performance Specification: 1,000,000 Wyzenbeek; 10 Year Warranty  
 For Further Performance Requirements Go To: <http://www.designtex.com/jaunt.html>



*Seat:* Manufacturer: Momentum Textiles  
 Style Name: Silica  
 No. & Color: Medal  
 Content: 100% Silicone  
 Backing: Polyester  
 Width: 54"  
 Maintenance: WS; Bleach Cleanable (4:1)  
 Flame Resist. CA Bulletin 117 Sec. E  
 Performance Specification: 365,000 D.R.; GREENGUARD Gold Certified; PVC Free; Warranty 10 Years  
 For Further Performance Requirements Go To: [https://www.memosamples.com/silica\\_pr.shtml](https://www.memosamples.com/silica_pr.shtml)



12610 - Finish and Upholstery

Uph.  
 Code

No.	Type	Location	Fabric Description
NN	Two-Fabric	Varies	<p><i>Back:</i> Manufacturer: Designtex                      Style Name: #2845-402 Larkspur                      No. &amp; Color: Twilight                      Content: 46% Polyester (Postconsumer Recycled), 54% Polyester (Preconsumer Recycled)                      Finish: Crypton Green                      Width: 54"                      Backing: Fluid Barrier                      Cleaning: Water-based Modified (WM) , Bleach Cleanable (10:1)                      Repeat: V .25 inches x H .25 inches                      Flammability: CA TB 117-2013 , NFPA 260                      Performance Specification: 100,000 Wyzenbeek double rubs (CD); Lightfastness: 40 hours; 5 Years Warranty; Ships Carbon Neutral                      For Further Performance Requirements Go To: <a href="http://www.designtex.com/tumbleweed.html">http://www.designtex.com/tumbleweed.html</a></p>  <p><i>Seat:</i> Manufacturer: Momentum Textiles                      Style Name: Silica Tech                      No. &amp; Color: Vintage                      Product No.: #09127996                      Content: 100% Silicone                      Backing: Polyester                      Width: 54"                      Weight: 1.74 lb.                      Maintenance: WS - Water-Based Cleaning Agents Or Foam; Bleach Cleanable (4:1)                      Flame Resist. CA Bulletin 117 2013; UFAC Class 1; NFPA 260 Class 1                      Performance Specification: 270,000 D.R., GREENGUARD Gold Certified; PVC Free                      For Further Performance Requirements Go To: <a href="https://www.memosamples.com/servlet/quickSearchSpecs.jsp?prodNo=09127875&amp;patternPos=241&amp;colorPos=1&amp;chairImgKey=&amp;backToPage=/servlet/quickSearch.jsp&amp;favorites=&amp;navDirection=detail&amp;searchType=library#">https://www.memosamples.com/servlet/quickSearchSpecs.jsp?prodNo=09127875&amp;patternPos=241&amp;colorPos=1&amp;chairImgKey=&amp;backToPage=/servlet/quickSearch.jsp&amp;favorites=&amp;navDirection=detail&amp;searchType=library#</a></p> 

12610 - Finish and Upholstery

Uph.  
 Code

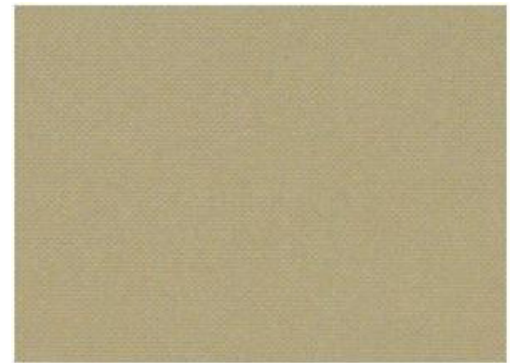
No.	Type	Location	Fabric Description
-----	------	----------	--------------------

OO Two- Staff Area Sofa  
 Fabric

*Back:* Manufacturer: Momentum Textiles  
 Style Name: Drift  
 Product No. #09128304  
 No. & Color: Stellar  
 Content: 100% Repreve Solution Dyed  
 Recycled Nylon  
 Backing: Nylon  
 Width: 54"  
 Flame Resist.: CA Bulletin 117 2013  
 Maintenance: WS; Bleach Cleanable (4:1)  
 Repeat: 18-3/4" L, 14" W  
 Performance 100,000+ double rubs (Wyzenbeek)  
 Specification:  
 For Further <http://healthcaretextiles.com/textiles/drift>  
 Performance  
 Requirements  
 Go To:



*Seat:* Manufacturer: Momentum Textiles  
 Style Name: Silica Tech  
 No. & Color: Vintage  
 Product No.: #09127996  
 Content: 100% Silicone  
 Backing: Polyester  
 Width: 54"  
 Weight: 1.74 lb.  
 Maintenance: WS - Water-Based Cleaning  
 Agents Or Foam; Bleach  
 Cleanable (4:1)  
 Flame Resist. CA Bulletin 117 2013; UFAC  
 Class 1; NFPA 260 Class 1  
 Performance 270,000 D.R., GREENGUARD Gold Certified; PVC Free  
 Specification:  
 For Further <https://www.memosamples.com/servlet/quickSearchSpecs.jsp?prodNo=09127875&patternPos=241&colorPos=1&chairImgKey=&backToPage=/servlet/quickSearch.jsp&favorites=&navDirection=detail&searchType=library#>  
 Performance  
 Requirements  
 Go To:



12610 - Finish and Upholstery

Uph.  
Code

No.	Type	Location	Fabric Description
PP	Single Fabric	Bench	<p><i>Seat:</i> Manufacturer: Momentum Textiles Style Name: Silica No. &amp; Color: Dewpoint Content: 100% Silicone Backing: Polyester Width: 54" Maintenance: WS; Bleach Cleanable (4:1) Flame Resist. CA Bulletin 117 Sec. E Performance 365,000 D.R.; GREENGUARD Specification: Gold Certified; PVC Free; Warranty 10 Years For Further <a href="https://www.memosamples.com/silica_pr.shtml">https://www.memosamples.com/silica_pr.shtml</a> Performance Requirements Go To:</p> 

12610 - Finish and Upholstery

Uph.  
 Code

No.	Type	Location	Fabric Description
-----	------	----------	--------------------

QQ	Two-Fabric	Conference Room Seating	
----	------------	-------------------------	--

*Back:* Manufacturer: Designtex  
 Style Name: Hint  
 No. & Color: #3776-107 Sandstone  
 Content: 50% Acrylic, 50% Polyester  
 Flammability: CA TB 117-2013 , NFPA 260  
 Backing: None  
 Width: 55"  
 Lightfastness: 40 Hours  
 Weight: 19 ounces/linear yard  
 Cleaning: Water-based/Solvent (WS) , Bleach Cleanable (4:1)  
 Performance Specification: 100,000 Wyzenbeek double rubs (CD); 3 Year Warranty  
 For Further Performance Requirements <http://www.designtex.com/hint.html>  
 Go To:



*Seat:* Manufacturer: Momentum Design Studio  
 Style Name: Silica Leather  
 No. & Color: Lichen  
 Product No.: #09141592  
 Content: 100% Silicone  
 Backing: Polyester  
 Width: 54"  
 Weight: 1.57 lb./yard  
 Maintenance: WS; Bleach Cleanable (4:1)  
 Flame Resist. CA Bulletin 117 Sec. E  
 Performance Specification: 210,000 D.R.; Reduced Environmental Impact: GREENGUARD Gold Certified; PVC Free  
 For Further Performance Requirements [https://www.memosamples.com/servlet/quickSearchSpecs.jsp?prodNo=09141471&patternPos=&colorPos=&chairImgKey=&backToPage=silica\\_leather\\_pr.shtml&favorites=&navDirection=&searchType=specs#](https://www.memosamples.com/servlet/quickSearchSpecs.jsp?prodNo=09141471&patternPos=&colorPos=&chairImgKey=&backToPage=silica_leather_pr.shtml&favorites=&navDirection=&searchType=specs#)  
 Go To:





12610 - Finish and Upholstery

Uph.  
 Code

No.	Type	Location	Fabric Description
RR	Two- Fabric	Conference Room Seating	<p>Manufacturer: Designtex                      Style Name: Hint                      No. &amp; Color: #3776-402 Pool                      Content: 50% Acrylic, 50% Polyester                      Finish: CA TB 117-2013 , NFPA 260                      Backing: None                      Width: 55"                      Lightfastness: 40 Hours                      Weight: 19 ounces/linear yard                      Cleaning: Water-based/Solvent (WS) , Bleach Cleanable (4:1)                      Performance Specification: 100,000 Wyzenbeek double rubs (CD); 3 Year Warranty                      For Further Performance Requirements Go To: <a href="http://www.designtex.com/hint.html">http://www.designtex.com/hint.html</a></p> 
	Seat:		<p>Manufacturer: Momentum Design Studio                      Style Name: Silica Leather                      No. &amp; Color: Barley                      Product No.: #09141460                      Content: 100% Silicone                      Backing: Polyester                      Width: 54"                      Weight: 1.57 lb./yard                      Maintenance: WS; Bleach Cleanable (4:1)                      Flame Resist. CA Bulletin 117 Sec. E                      Performance Specification: 210,000 D.R.; Reduced Environmental Impact: GREENGUARD Gold Certified; PVC Free                      For Further Performance Requirements Go To: <a href="https://www.memosamples.com/servlet/quickSearchSpecs.jsp?prodNo=09141471&amp;patternPos=&amp;colorPos=&amp;chairImgKey=&amp;backToPage=silica_leather_pr.shtml&amp;favorites=&amp;navDirection=&amp;searchType=specs#">https://www.memosamples.com/servlet/quickSearchSpecs.jsp?prodNo=09141471&amp;patternPos=&amp;colorPos=&amp;chairImgKey=&amp;backToPage=silica_leather_pr.shtml&amp;favorites=&amp;navDirection=&amp;searchType=specs#</a></p> 

12610 - Finish and Upholstery

Uph.  
 Code

No.	Type	Location	Fabric Description
SS	Two- Fabric	Conference Room Seating	<p>Manufacturer: Designtex                      Style Name: Hint                      No. &amp; Color: #3776-702 Copper                      Content: 50% Acrylic, 50% Polyester                      Finish: CA TB 117-2013 , NFPA 260                      Backing: None                      Width: 55"                      Lightfastness: 40 Hours                      Weight: 19 ounces/linear yard                      Cleaning: Water-based/Solvent (WS) , Bleach Cleanable (4:1)                      Performance Specification: 100,000 Wyzenbeek double rubs (CD); 3 Year Warranty                      For Further Performance Requirements Go To: <a href="http://www.designtex.com/hint.html">http://www.designtex.com/hint.html</a></p> 
	Seat:		<p>Manufacturer: Momentum Design Studio                      Style Name: Silica Leather                      No. &amp; Color: Barley                      Product No.: #09141460                      Content: 100% Silicone                      Backing: Polyester                      Width: 54"                      Weight: 1.57 lb./yard                      Maintenance: WS; Bleach Cleanable (4:1)                      Flame Resist. CA Bulletin 117 Sec. E                      Performance Specification: 210,000 D.R.; Reduced Environmental Impact: GREENGUARD Gold Certified; PVC Free                      For Further Performance Requirements Go To: <a href="https://www.memosamples.com/servlet/quickSearchSpecs.jsp?prodNo=09141471&amp;patternPos=&amp;colorPos=&amp;chairImgKey=&amp;backToPage=silica_leather_pr.shtml&amp;favorites=&amp;navDirection=&amp;searchType=specs#">https://www.memosamples.com/servlet/quickSearchSpecs.jsp?prodNo=09141471&amp;patternPos=&amp;colorPos=&amp;chairImgKey=&amp;backToPage=silica_leather_pr.shtml&amp;favorites=&amp;navDirection=&amp;searchType=specs#</a></p> 



12610 - Finish and Upholstery

Uph.  
 Code

No.	Type	Location	Fabric Description
TT	Two- Fabric	Conference Room Seating	<p>Manufacturer: Designtex                      Style Name: Hint                      No. &amp; Color: #3776-106 Dove                      Content: 50% Acrylic, 50% Polyester                      Finish: CA TB 117-2013 , NFPA 260                      Backing: None                      Width: 55"                      Lightfastness: 40 Hours                      Weight: 19 ounces/linear yard                      Cleaning: Water-based/Solvent (WS) , Bleach Cleanable (4:1)                      Performance Specification: 100,000 Wyzenbeek double rubs (CD); 3 Year Warranty                      For Further Performance Requirements <a href="http://www.designtex.com/hint.html">http://www.designtex.com/hint.html</a>                      Go To:</p> <p><i>Seat:</i> Manufacturer: Momentum Design Studio                      Style Name: Silica Leather                      No. &amp; Color: Lichen                      Product No.: #09141592                      Content: 100% Silicone                      Backing: Polyester                      Width: 54"                      Weight: 1.57 lb./yard                      Maintenance: WS; Bleach Cleanable (4:1)                      Flame Resist. CA Bulletin 117 Sec. E                      Performance Specification: 210,000 D.R.; Reduced Environmental Impact: GREENGUARD Gold Certified; PVC Free                      For Further Performance Requirements <a href="https://www.memosamples.com/servlet/quickSearchSpecs.jsp?prodNo=09141471&amp;patternPos=&amp;colorPos=&amp;chairImgKey=&amp;backToPage=silica_leather_pr.shtml&amp;favorites=&amp;navDirection=&amp;searchType=specs#">https://www.memosamples.com/servlet/quickSearchSpecs.jsp?prodNo=09141471&amp;patternPos=&amp;colorPos=&amp;chairImgKey=&amp;backToPage=silica_leather_pr.shtml&amp;favorites=&amp;navDirection=&amp;searchType=specs#</a>                      Go To:</p>

