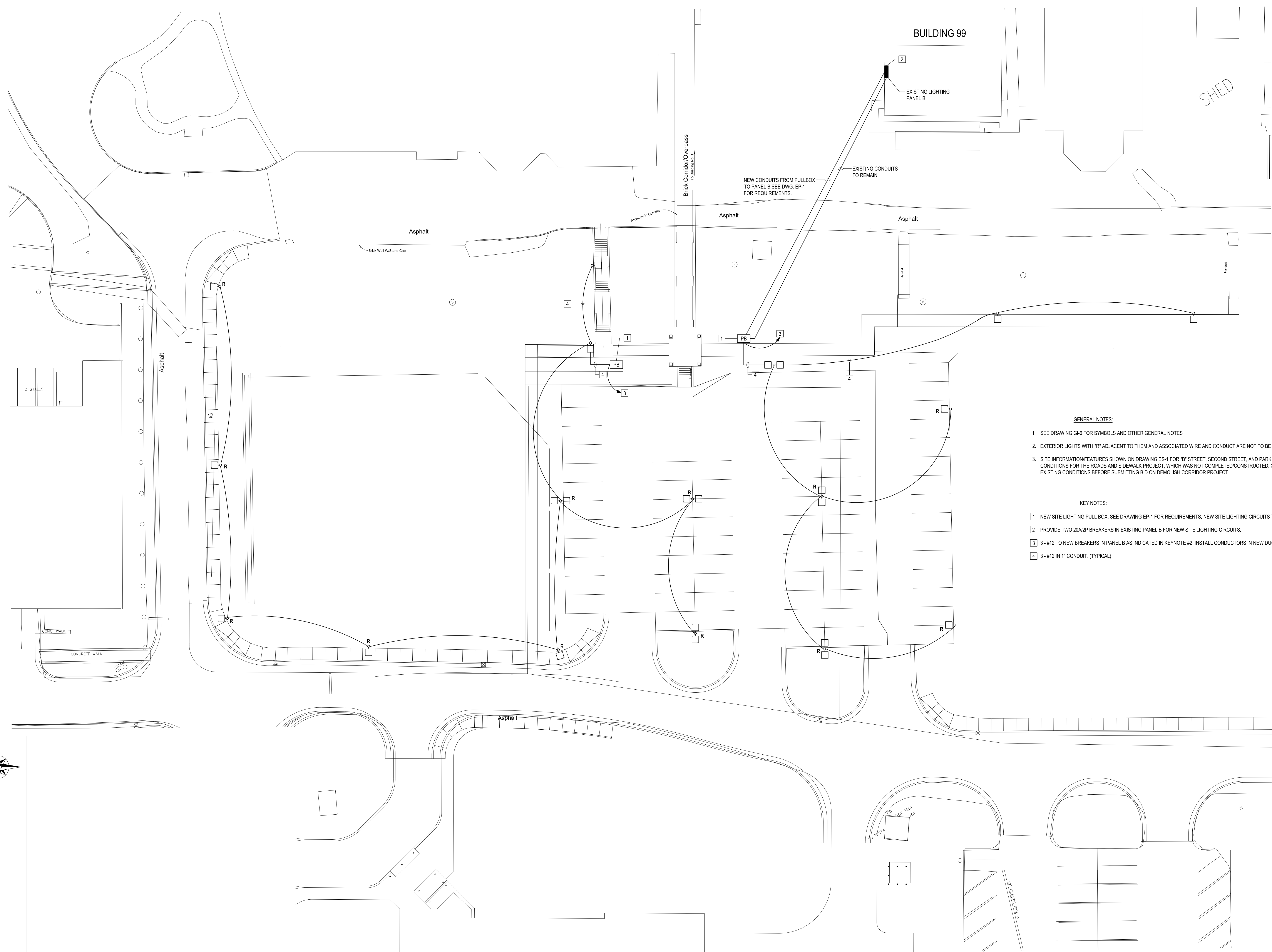
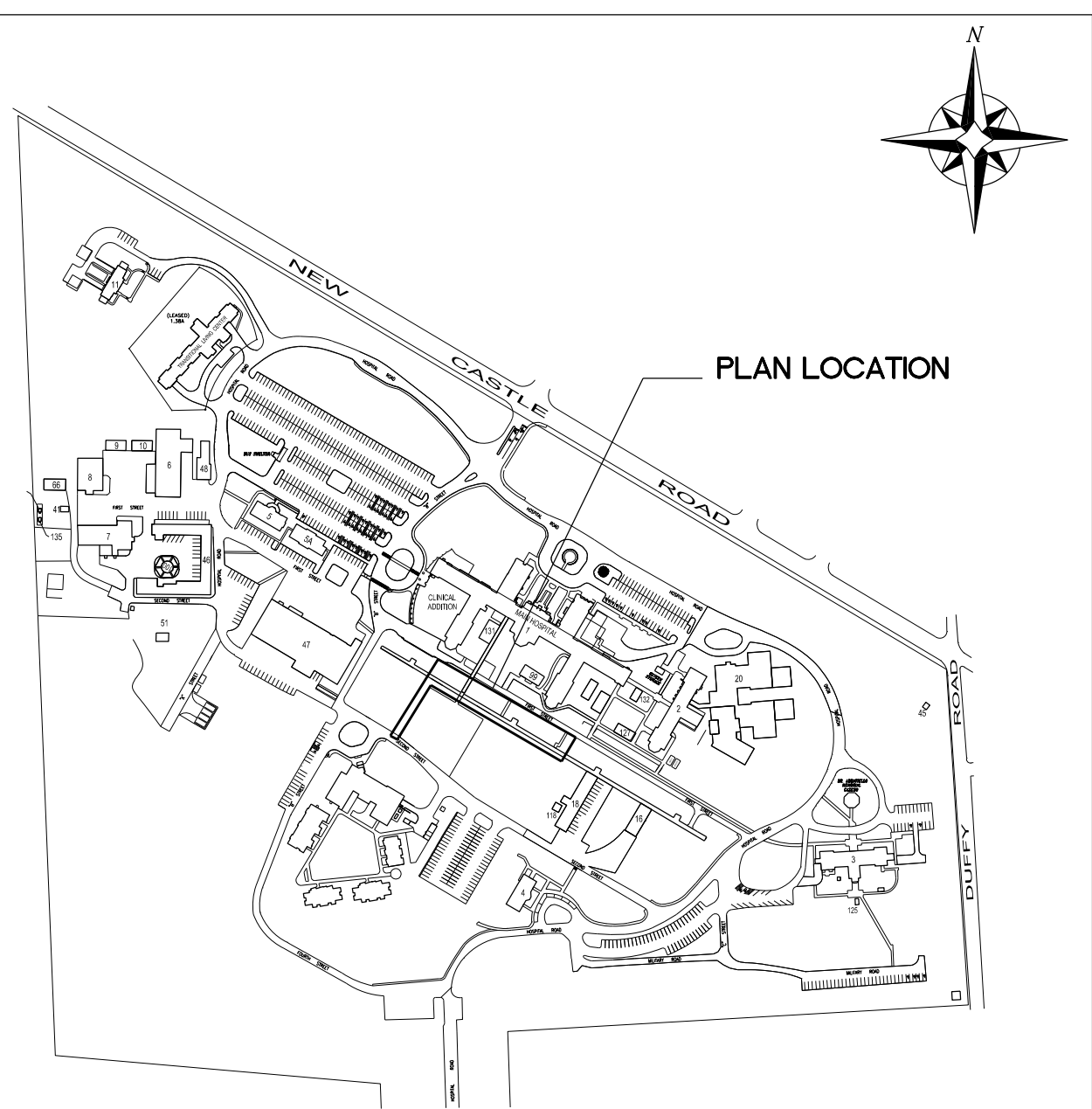


three inches = one foot  
one and one half inches = one foot  
one inch = one foot  
three quarters inch = one foot  
one half inch = one foot  
three eighths inch = one foot  
one quarter inch = one foot  
one eighth inch = one foot



- GENERAL NOTES:**
- 1. SEE DRAWING G-6 FOR SYMBOLS AND OTHER GENERAL NOTES
  - 2. EXTERIOR LIGHTS WITH "R" ADJACENT TO THEM AND ASSOCIATED WIRE AND CONDUIT ARE NOT TO BE INCLUDED WITHIN BID ITEM I.
  - 3. SITE INFORMATION/FEATURES SHOWN ON DRAWING ES-1 FOR "B" STREET, SECOND STREET, AND PARKING LOT DISPLAYS THE PROPOSED CONDITIONS FOR THE ROADS AND SIDEWALK PROJECT, WHICH WAS NOT COMPLETED/CONSTRUCTED. CONTRACTORS TO FIELD VERIFY EXISTING CONDITIONS BEFORE SUBMITTING BID ON DEMOLISH CORRIDOR PROJECT.
- KEY NOTES:**
- 1] NEW SITE LIGHTING PULL BOX. SEE DRAWING EP-1 FOR REQUIREMENTS. NEW SITE LIGHTING CIRCUITS TO FEED THROUGH PULLBOX AS INDICATED.
  - 2] PROVIDE TWO 20A/2P BREAKERS IN EXISTING PANEL B FOR NEW SITE LIGHTING CIRCUITS.
  - 3] 3 - #12 TO NEW BREAKERS IN PANEL B AS INDICATED IN KEYNOTE #2. INSTALL CONDUCTORS IN NEW DUCTBANK TO PANEL B
  - 4] 3 - #12 IN 1" CONDUIT. (TYPICAL)



**ELECTRICAL SITE PLAN**  
1"=20'

<b>ADDENDUM #1</b> 7/12/2012		<b>CONSULTANTS:</b>  The Contractor shall verify and be responsible for all dimensions. DO NOT scale the drawing - any errors or omissions shall be reported to Stantec without delay. The Copyrights to all designs and drawings are the property of Stantec. Reproduction or use for any purpose other than that authorized by Stantec is forbidden. <b>Stantec</b>		 <b>ARCHITECT/ENGINEERS:</b>  <b>TOLMAN ENGINEERING, PLLC</b> 3610 LAWSON ROAD JAMESTOWN, NEW YORK 14701 PHONE: (716) 484 - 1366 FAX: (716) 484 - 1519		<b>Drawing Title</b> <b>ELECTRICAL SITE PLAN</b>		<b>Project Title</b> <b>DEMOLISH CORRIDOR</b>		<b>Project Number</b> 529-12-102 <b>Building Number</b> N/A		<b>Office of Construction and Facilities Management</b> 	
<b>Revisions</b>				<b>Approved Project Director</b>		<b>Location</b> <b>BUTLER VAMC</b>		<b>Drawing Number</b> <b>ES-1</b> Dwg. 33 of 40					