

January 5, 2018

To: Eugene Seiter, General Engineer
P&D/ Facility Management
VA New Jersey Health Care System
Office: (973) 676-1000 Ext. 3030
Fax: (973) 395-7028
Cell: (973) 580-0681
eugene.seiter@va.gov

Contract No.: VA243-16-C-0064

Station Project No.: 561-15-300

Bancroft Project No.: 16-105

Project Name: East Orange Improve Outpatient Environment 4D

RE:

1. From Robert Lurz, Seawolf Construction (January 4, 2018):
The finish schedule does not agree with a lot of what is shown on the finish floor plans.
Please advise which is correct.
 - a. In the Finish Plan Legend shown on floor finish plans it shows WSF-1 only but on the finish schedule it shows WSF-2 and WSF-3. What are the colors for WSF-2/3?
 - b. On the floor finish plans the transition tag TS-4 is a welded seam. This can only be accomplished with sheet vinyl to sheet vinyl. In many areas it shows TS-4 welded seams at LVT to LVT. According to flooring subcontractors this cannot be done. Please advise.

Summary

RFI RESPONSE:

- 1a. Refer to revised sheets I-101, I-102, I-103 and I-400 for revisions and clarifications to finish flooring.
- 1b. Refer to revised sheets I-101, I-102 and I-103 for revised transition details.

ATTACHMENTS:

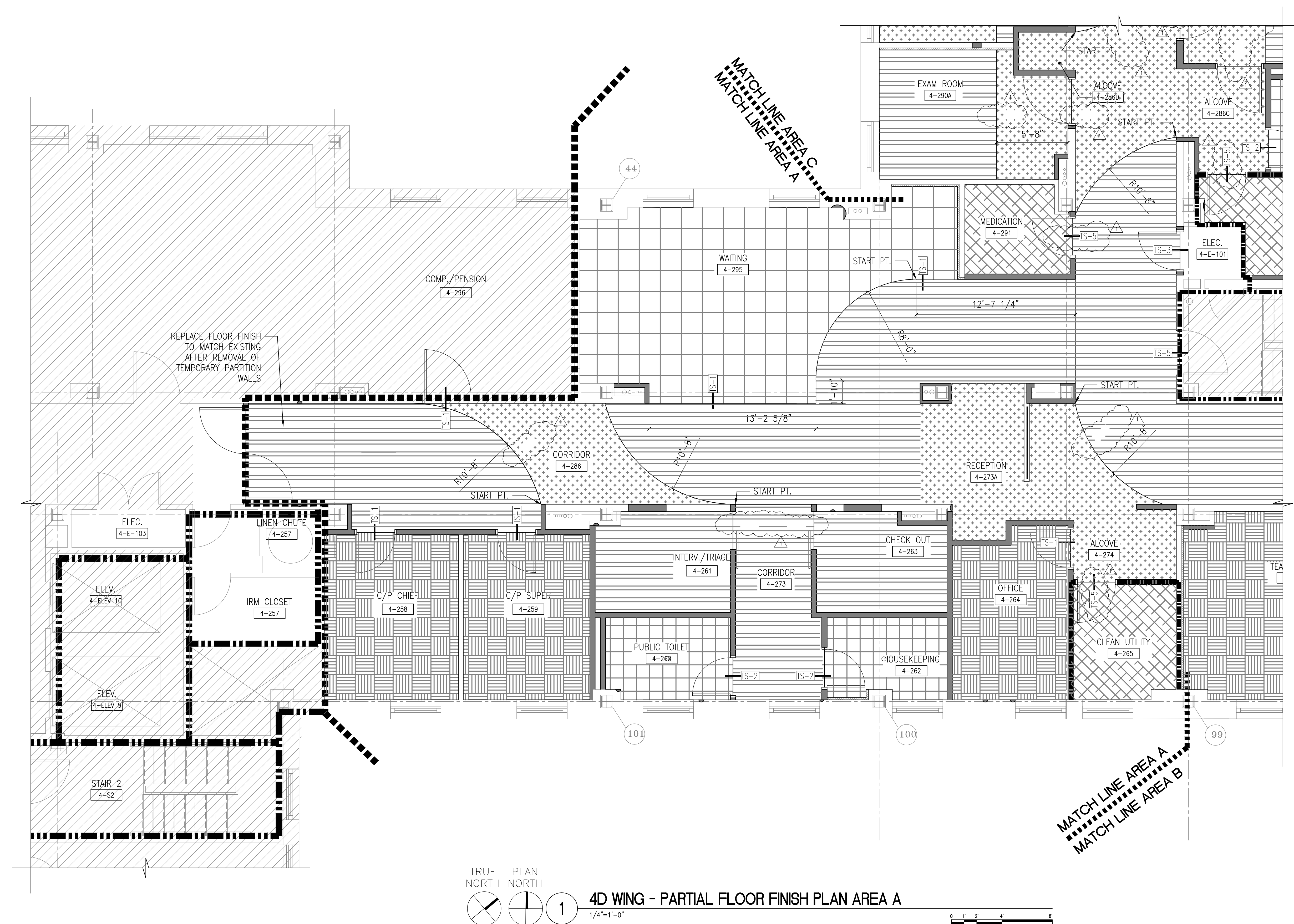
1. Sheet I-101
2. Sheet I-102
3. Sheet I-103
4. Sheet I-400

Prepared By: Jennifer Villena-Johnson
Copies To: File, Pat Bailey



700 Nicholas Blvd. | Suite 403 | Elk Grove Village, Illinois 60007
California | Connecticut | Colorado | Florida | Louisiana | Pennsylvania | Virginia | Wisconsin
847.952.9362 | www.bancroft-ae.com

three inches = one foot
one and one half inches = one foot
one inch = one foot
three quarters inch = one foot
one half inch = one foot
three eighths inch = one foot
one quarter inch = one foot
one eighth inch = one foot
one sixteenth inch = one foot



FINISH GENERAL NOTES

- A. FOLLOW MANUFACTURER'S REQUIREMENTS FOR SUB-FLOOR PREPARATION.
- B. FLOOR LEVELING AS NECESSARY BASED ON SUB-FLOOR CONDITION.
- C. REFER TO SHEET 1400 FOR ROOM FINISH SCHEDULE AND LEGEND.
- D. REFER TO SHEET 1103 FOR FLOOR TRANSITION DETAILS.
- E. CEILING MOUNTED CURTAIN TRACKS AND FLOOR TRANSITIONS IN EXAM ROOMS SHALL ALIGN. COORDINATE WITH CEILING PLANS.

FINISH PLAN LEGEND

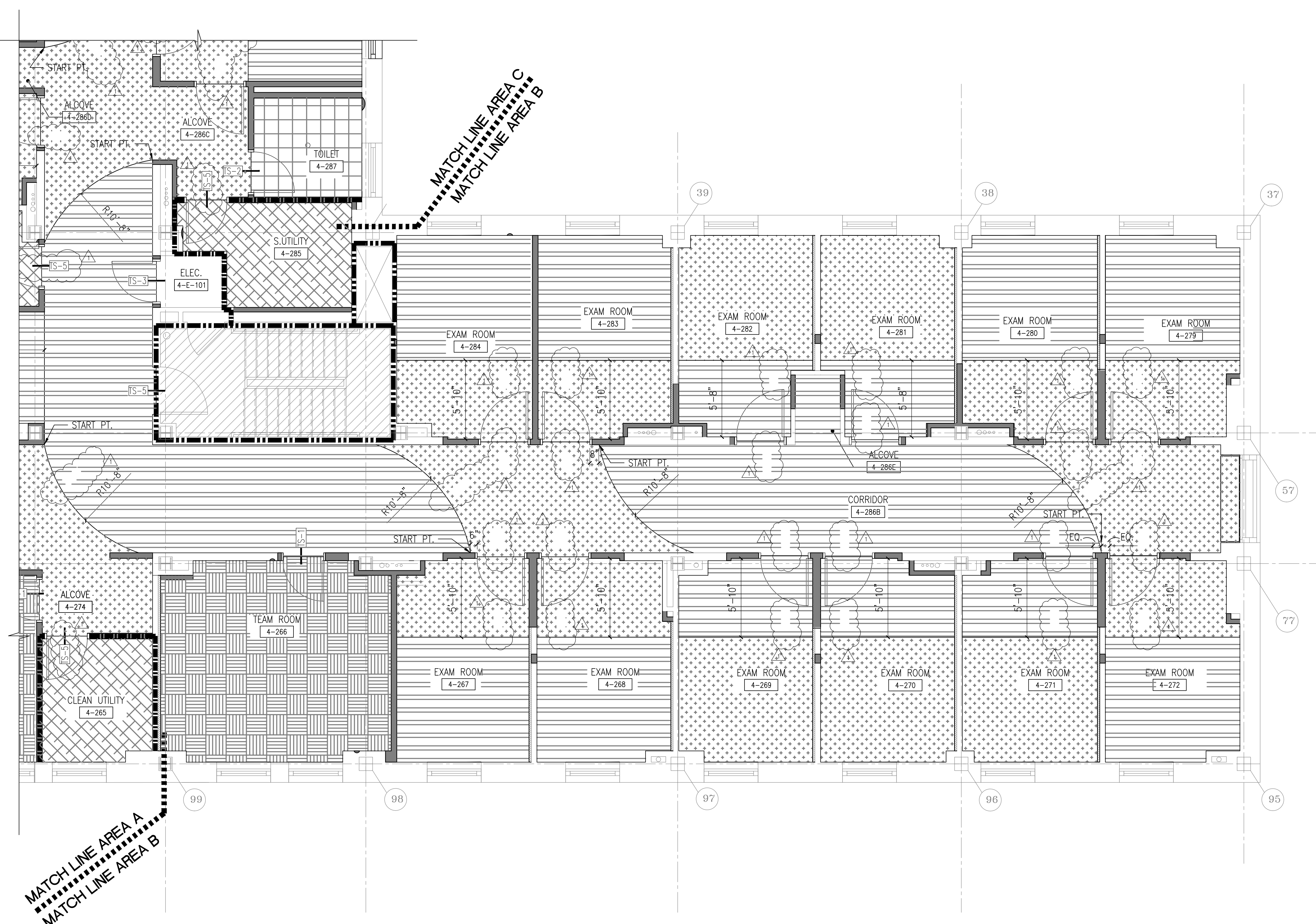
- WSF-1 (WELDED SHEET FLOORING)
- LVT-1 (LUXURY VINYL TILE)
- LVT-2 (LUXURY VINYL TILE)
- PT-1 (PORCELAIN TILE)
- CPT-1 (CARPET)
- CPT-2 (CARPET)
- TS-# TRANSITION TAG
- DIVIDER STRIP
- SMOKE BARRIER (1 HR)
- FIRE BARRIER (1 HR)
- FIRE BARRIER (2 HR)

FLOOR PREPARATION

- ONE OF THE FOLLOWING PRODUCTS SHALL BE USED FOR MASTIC ABATEMENT:
A. CHEMSAFE 100, OR APPROVED EQUAL.
B. SENTINEL 909, OR APPROVED EQUAL.
- GRIND/ SANDBLAST FLOORS WHERE MASTIC HAS BEEN ABATED.
- APPLY SCHONOX EPA EPOXY, OR APPROVED EQUAL, OVER FLOORS.
- SKIM COAT OVER EPOXY WITH SCHONOX SL PATCH, OR APPROVED EQUAL, AT APPROXIMATELY 1/8 INCH THICKNESS.

SITE PLAN: 		ARCHITECT + ENGINEERS: BANCROFT ARCHITECTS + ENGINEERS www.bancroft-ae.com		Drawing Title: 4D WING- PARTIAL FLOOR FINISH PLAN AREA A Approved: Project Director		Project Title: VANJ EAST ORANGE CAMPUS RENOVATE OUTPATIENT ENVIRONMENT 4D Location: 385 TREMONT AVE., EAST ORANGE, NJ 07018 Date: 06/01/2017 Checked: DB Drawn: JVJ		VA CONTRACT NO. VA243-16-C-0064 Project Number: 561-15-300 Building Number: 01 Drawing Number: 1101		Office of Construction and Facilities Management 	
Revisions: Revisions Date		Revisions: Revisions Date		Revisions: Revisions Date		Revisions: Revisions Date		Revisions: Revisions Date		Revisions: Revisions Date	

three inches = one foot
one and one half inches = one foot
one inch = one foot
three quarters inch = one foot
one half inch = one foot
three eighths inch = one foot
one quarter inch = one foot
one eighth inch = one foot



TRUE PLAN NORTH NORTH
1 4D WING - PARTIAL FLOOR FINISH PLAN AREA B
1/4"=1'-0"

FINISH GENERAL NOTES

- A. FOLLOW MANUFACTURER'S REQUIREMENTS FOR SUB-FLOOR PREPARATION.
- B. FLOOR LEVELING AS NECESSARY BASED ON SUB-FLOOR CONDITION.
- C. REFER TO SHEET 1400 FOR ROOM FINISH SCHEDULE AND LEGEND.
- D. REFER TO SHEET 1103 FOR FLOOR TRANSITION DETAILS.
- E. CEILING MOUNTED CURTAIN TRACKS AND FLOOR TRANSITIONS IN EXAM ROOMS SHALL ALIGN. COORDINATE WITH CEILING PLANS.

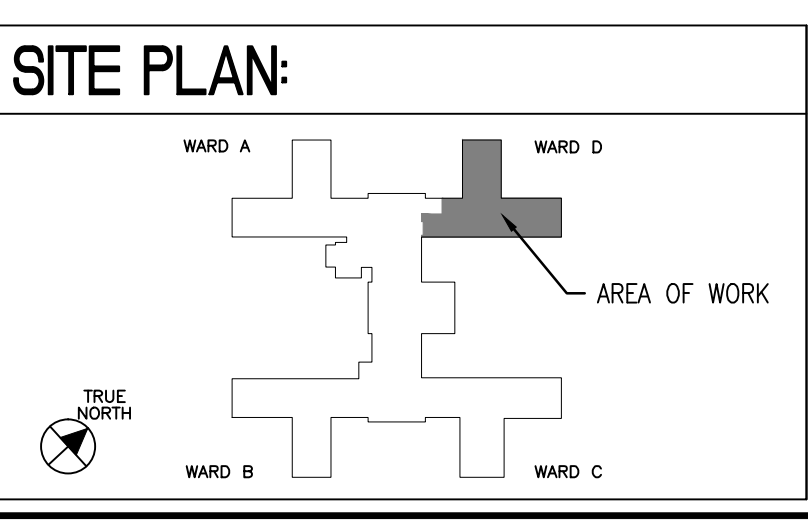
FINISH PLAN LEGEND

- WSF-1 (WELDED SHEET FLOORING)
- LVT-1 (LUXURY VINYL TILE)
- LVT-2 (LUXURY VINYL TILE)
- PT-1 (PORCELAIN TILE)
- CPT-1 (CARPET)
- CPT-2 (CARPET)
- TS-# TRANSITION TAG
- DIVIDER STRIP
- SMOKE BARRIER (1 HR)
- FIRE BARRIER (1 HR)
- FIRE BARRIER (2 HR)

FLOOR PREPARATION

- ONE OF THE FOLLOWING PRODUCTS SHALL BE USED FOR MASTIC ABATEMENT:
A. CHEMSAFE 100, OR APPROVED EQUAL.
B. SENTINEL 909, OR APPROVED EQUAL.
- GRIND/ SANDBLAST FLOORS WHERE MASTIC HAS BEEN ABATED.
- APPLY SCHONOX EPA EPOXY, OR APPROVED EQUAL, OVER FLOORS.
- SKIM COAT OVER EPOXY WITH SCHONOX SL PATCH, OR APPROVED EQUAL, AT APPROXIMATELY 1/8 INCH THICKNESS.

REF 04 RESPONSE	01/08/18
BID DOCUMENT SUBMITTAL	6/1/2017
100% CONSTRUCTION DOCUMENT SUBMITTAL	3/13/2017
95% CONSTRUCTION DOCUMENT SUBMITTAL	2/3/2017
65% CONSTRUCTION DOCUMENT SUBMITTAL	12/12/2016
35% SUBMITTAL	09/21/2016
Revisions:	Date



ARCHITECT + ENGINEERS:

Bancroft

BANCROFT ARCHITECTS + ENGINEERS
www.bancroft-ae.com

700 Nicholas Blvd, Suite 300
Elk Grove Village, IL 60007
T: 847.952.9362 F: 847.952.9403
www.bancroft-ae.com
Bancroft-AE Project No. 16-105

Drawing Title
4D WING- PARTIAL FLOOR FINISH PLAN AREA B

Approved: Project Director

Project Title
VANJ EAST ORANGE CAMPUS RENOVATE OUTPATIENT ENVIRONMENT 4D

Location
385 TREMONT AVE., EAST ORANGE, NJ 07018

Date
06/01/2017

Checked
TS

Drawn
DB

VA CONTRACT NO. VA243-16-C-0064

Project Number
561-15-300

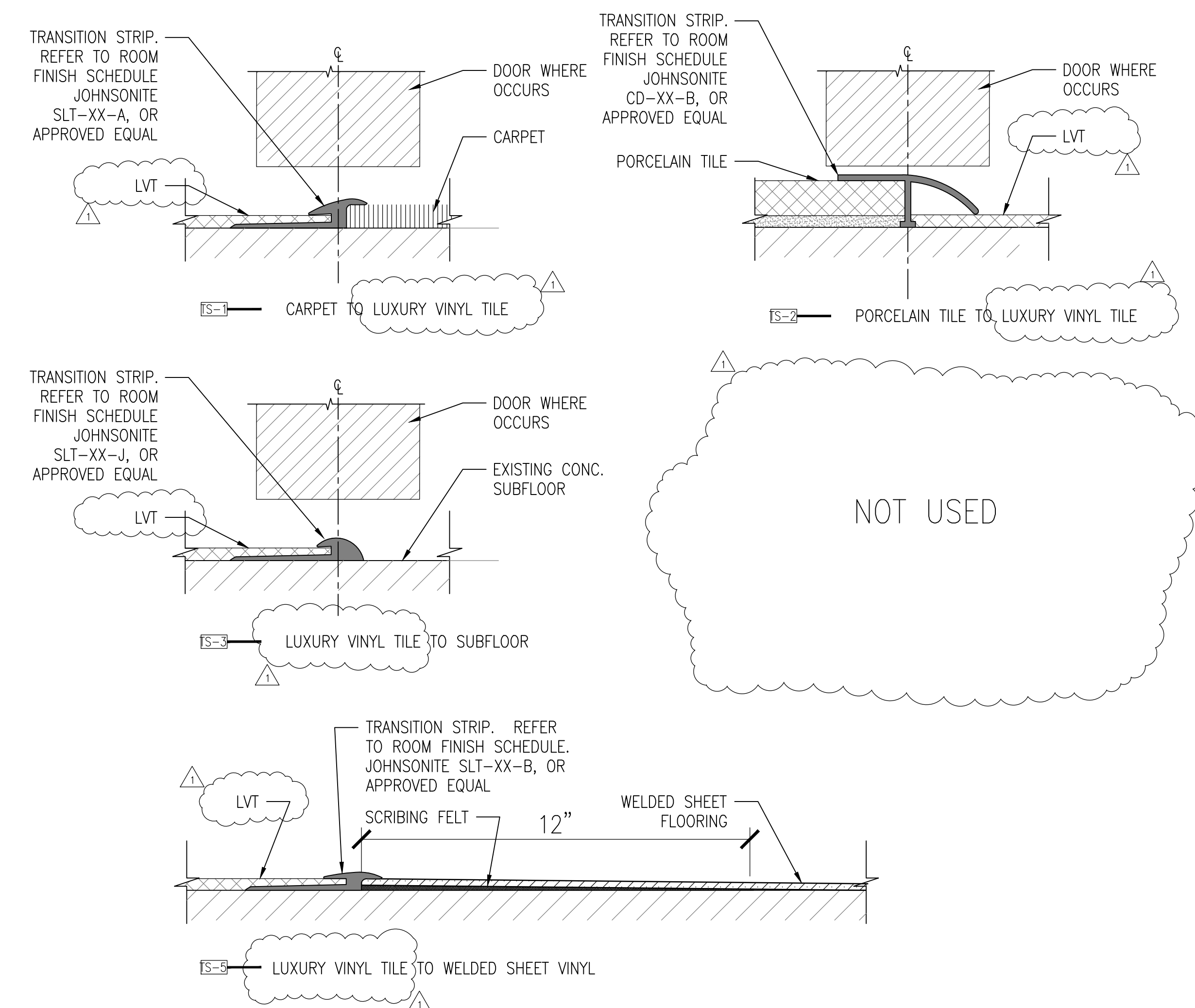
Building Number
01

Drawing Number
1102

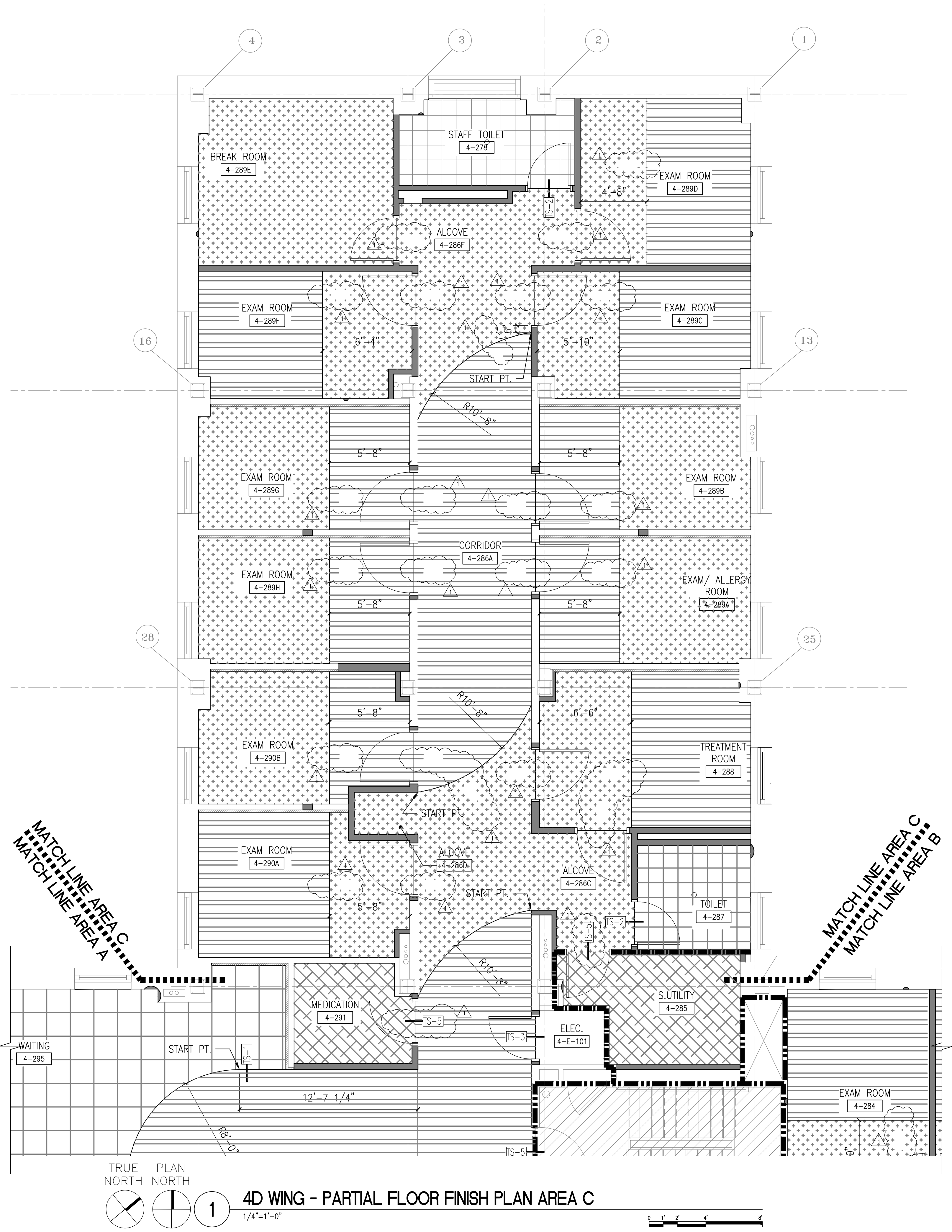
Office of Construction and Facilities Management

Department of Veterans Affairs

three inches = one foot
one and one half inches = one foot
one inch = one foot
three quarters inch = one foot
one half inch = one foot
three eighths inch = one foot
one quarter inch = one foot
one eighth inch = one foot



2 FLOOR TRANSITION DETAILS
1"=0'-0"=1'-0"



FINISH GENERAL NOTES

- A. FOLLOW MANUFACTURER'S REQUIREMENTS FOR SUB-FLOOR PREPARATION.
- B. FLOOR LEVELING AS NECESSARY BASED ON SUB-FLOOR CONDITION.
- C. REFER TO SHEET I400 FOR ROOM FINISH SCHEDULE AND LEGEND.
- D. REFER TO SHEET I103 FOR FLOOR TRANSITION DETAILS.
- E. CEILING MOUNTED CURTAIN TRACKS AND FLOOR TRANSITIONS IN EXAM ROOMS SHALL ALIGN. COORDINATE WITH CEILING PLANS.

FINISH PLAN LEGEND

- WSF-1 (WELDED SHEET FLOORING)
- LVT-1 (LUXURY VINYL TILE)
- LVT-2 (LUXURY VINYL TILE)
- PT-1 (PORCELAIN TILE)
- CPT-1 (CARPET)
- CPT-2 (CARPET)
- TS-# TRANSITION TAG
- DIVIDER STRIP
- SMOKE BARRIER (1 HR)
- FIRE BARRIER (1 HR)
- FIRE BARRIER (2 HR)

FLOOR PREPARATION

- ONE OF THE FOLLOWING PRODUCTS SHALL BE USED FOR MASTIC ABATEMENT:
 - A. CHEMSAFE 100, OR APPROVED EQUAL.
 - B. SENTINEL 909, OR APPROVED EQUAL.
- GRIND/ SANDBLAST FLOORS WHERE MASTIC HAS BEEN ABATED.
- APPLY SCHONOX EPA EPOXY, OR APPROVED EQUAL, OVER FLOORS.
- SKIM COAT OVER EPOXY WITH SCHONOX SL PATCH, OR APPROVED EQUAL, AT APPROXIMATELY 1/8 INCH THICKNESS.

VA CONTRACT NO. VA243-16-C-0064

Project Title VANJ EAST ORANGE CAMPUS RENOVATE OUTPATIENT ENVIRONMENT 4D	Project Number 561-15-300	Office of Construction and Facilities Management
Location 385 TREMONT AVE., EAST ORANGE, NJ 07018	Building Number 01	
Date 06/01/2017	Checked TS	Drawn DB
Drawing Number I103		Department of Veterans Affairs

SITE PLAN:

WARD A, WARD B, WARD C, WARD D, AREA OF WORK

REF. 04 RESPONSE	01/08/18
BID DOCUMENT SUBMITTAL	6/1/2017
100% CONSTRUCTION DOCUMENT SUBMITTAL	3/13/2017
95% CONSTRUCTION DOCUMENT SUBMITTAL	2/3/2017
65% CONSTRUCTION DOCUMENT SUBMITTAL	12/12/2016
35% SUBMITTAL	09/21/2016
Revisions:	Date

ARCHITECT + ENGINEERS:

700 Nicholas Blvd, Suite 300
Elk Grove Village, IL 60007
T: 847.952.9362 F: 847.952.9403
www.bancroft-ae.com
Bancroft-AE Project No. 16-105

4D WING - PARTIAL FLOOR FINISH PLAN AREA C

Approved: Project Director

VA FORM 08-6231

