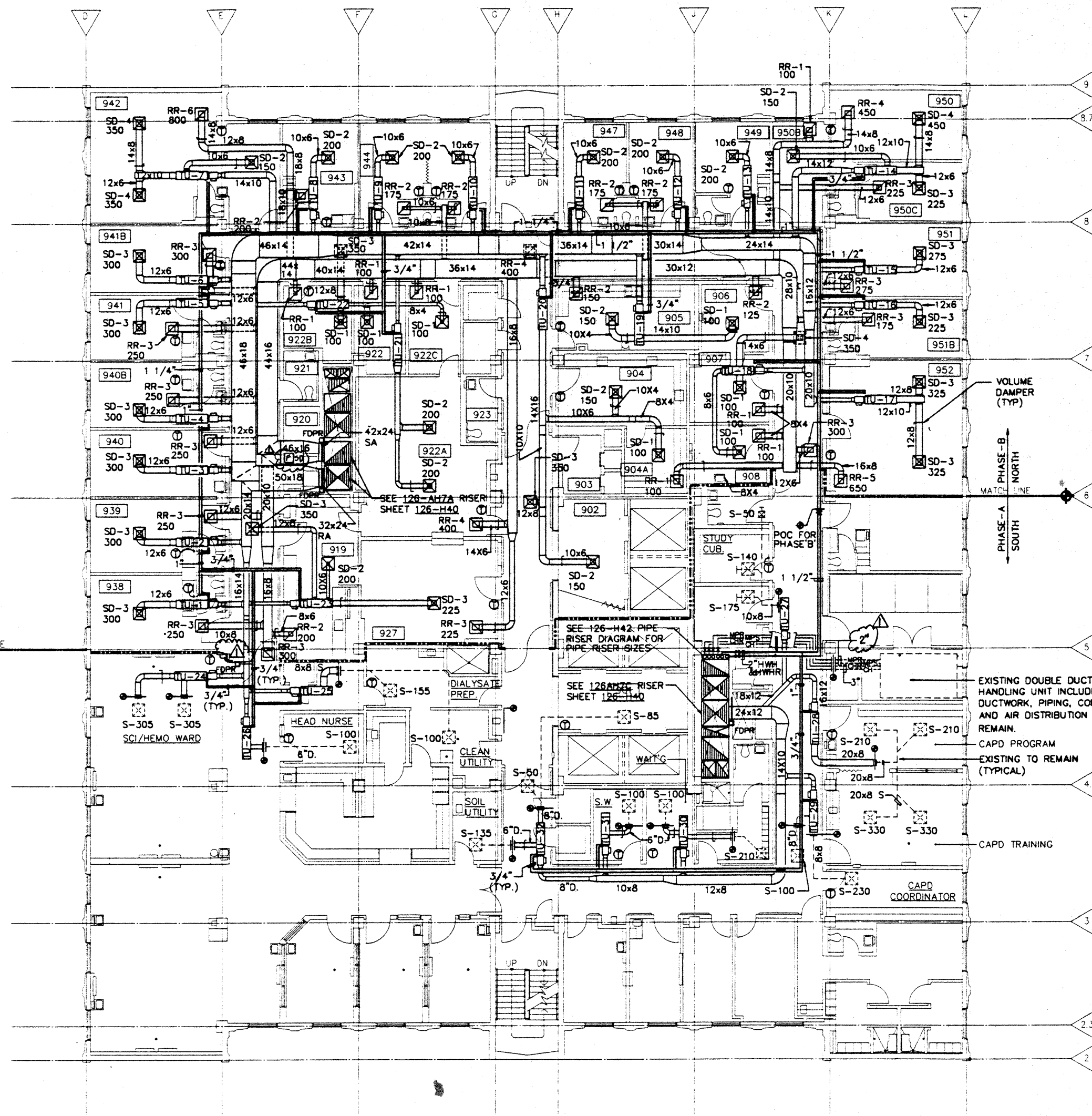


ROOM NO.	ROOM NAME
901	PASSENGER ELEV. LOBBY
902	SERVICE ELEV. LOBBY
903	TRASH & LINEN
904	EQUIP. MAINTAINANCE
904A	TECH. CUBICLE
905	RE-USE AREA
906	PROGRAM ASSISTANT
907	NEOPHRO. STUDY
908	FELLOWS ROOM
919	UTILITY ROOM
920	HAC/BMS
921	H.C. TOILET
922	IN-PATIENT WAITING
922A	OUT-PATIENT WAITING
922B	G.I. TECHNICIANS OFF.
922C	EDUC. ROOM
927	ADMITTING
938	SIGMOIDOSCOPY
939	COLONOSCOPY
940	ENDOS PROCEDURE
940B	ENDOS PROCEDURE
941	PROCEDURE ROOM
941B	PROCEDURE ROOM
942	RECOVERY ROOM
943	PREPARATION ROOM
944	PREP /EXAM.
947	G.I. RESEARCH NURSE
948	ULTRASOUND
949	G.I. ATTENDING LABORATORY
950	CHIEF NEPHROLOGY
950B	SECRETARY
950C	OFFICE
951	OFFICE
951B	OFFICE
952	CONFERENCE



NINTH FLOOR PLAN
SCALE: 1/8" = 1'-0"

SOUTH WARD - HEMO DIALYSIS
NORTH WARD - ENDOS / G.I.

AIR TERMINAL UNIT, SINGLE DUCT															
UNIT NO.	SYSTEM (FAN)	LOCATION OF BOX (ROOM)	CFM	DUCT RUNOUT SIZE TO UNIT	UNIT MAX. SP AT MAX. CFM	SOUND REQUIREMENTS MAX. INLET DUCT SP	MAX. ROOM NC	HOT WATER HEATING COIL						CFM AT MIN. BTUH	CONTROL TYPE
			MAX. MIN.					ENT. AIR TEMP. °F	ENT. WATER TEMP. °F	GPM	MAX. WATER PD (FT)	PIPE RUNOUT SIZE TO COIL			
TU-1	7A	938	300/100	5"D	.50	1.3	35	55	140	0.5	1.5	3/4"	100	4320	PNEUM.
TU-2	7A	939	300/100	5"D	.50	1.3	35	55	140	0.5	1.5	3/4"	100	4320	PNEUM.
TU-3	7A	940	300/100	5"D	.50	1.3	35	55	140	0.5	1.5	3/4"	100	4320	PNEUM.
TU-4	7A	940B	300/100	5"D	.50	1.3	35	55	140	0.5	1.5	3/4"	100	4320	PNEUM.
TU-5	7A	941	300/100	5"D	.50	1.3	35	55	140	0.5	1.5	3/4"	100	4320	PNEUM.
TU-6	7A	941B	300/100	5"D	.50	1.3	35	55	140	0.5	1.5	3/4"	100	4320	PNEUM.
TU-7	7A	942	900/475	8"D	.50	1.3	35	55	140	2.0	1.5	3/4"	475	20520	PNEUM.
TU-8	7A	943	200/100	5"D	.50	1.3	35	55	140	0.5	1.5	3/4"	100	4320	PNEUM.
TU-9	7A	944	200/100	5"D	.50	1.3	35	55	140	0.5	1.5	3/4"	100	4320	PNEUM.
TU-10	7A	945	200/100	5"D	.50	1.3	35	55	140	0.5	1.5	3/4"	100	4320	PNEUM.
TU-11	7A	947	200/100	5"D	.50	1.3	35	55	140	0.5	1.5	3/4"	100	4320	PNEUM.
TU-12	7A	948	200/100	5"D	.50	1.3	35	55	140	0.5	1.5	3/4"	100	4320	PNEUM.
TU-13	7A	949	200/100	5"D	.50	1.3	35	55	140	0.5	1.5	3/4"	100	4320	PNEUM.
TU-14	7A	950	825/475	8"D	.50	1.3	35	55	140	2.0	1.5	3/4"	475	20520	PNEUM.
TU-15	7A	951	275/100	5"D	.50	1.3	35	55	140	0.5	1.5	3/4"	100	4320	PNEUM.
TU-16	7A	951B	225/100	5"D	.50	1.3	35	55	140	0.5	1.5	3/4"	100	4320	PNEUM.
TU-17	7A	952	650/300	7"D	.50	1.3	35	55	140	1.3	1.5	3/4"	300	12960	PNEUM.
TU-18	7A	907	550/300	7"D	.50	1.3	35	55	140	1.3	1.5	3/4"	300	12960	PNEUM.
TU-19	7A	905	250/100	5"D	.50	1.3	35	55	140	0.5	1.5	3/4"	100	4320	PNEUM.
TU-20	7A	903	750/475	8"D	.50	1.3	35	55	140	2.0	1.5	3/4"	475	20520	PNEUM.
TU-21	7A	922A	400/175	6"D	.50	1.3	35	55	140	0.8	1.5	3/4"	175	7560	PNEUM.
TU-22	7A	922B	650/300	7"D	.50	1.3	35	55	140	1.3	1.5	3/4"	300	12960	PNEUM.
TU-23	7A	927	775/475	6"D	.50	1.3	35	55	140	2.0	1.5	3/4"	475	20520	PNEUM.
TU-24	7A	SCI/HEMO	610/300	7"D	.50	1.3	35	55	140	1.3	1.5	3/4"	300	12960	PNEUM.
TU-25	7A	DIAL/PRP	255/100	5"D	.50	1.3	35	55	140	0.5	1.5	3/4"	100	4320	PNEUM.
TU-26	7A	HEAD NURSE	100/100	5"D	.50	1.3	35	55	140	0.5	1.5	3/4"	100	4320	PNEUM.
TU-27	7C	STUDY CUB.	365/175	6"D	.50	1.3	35	55	140	0.8	1.5	3/4"	175	7560	PNEUM.
TU-28	7C	CAPD PROG.	1080/700	10"D	.50	1.3	35	55	140	3.0	1.5	3/4"	700	30240	PNEUM.
TU-29	7C	CAPD COOR.	330/175	6"D	.50	1.3	35	55	140	0.8	1.5	3/4"	175	7560	PNEUM.
TU-30	7C	WAIT'G	310/100	5"D	.50	1.3	35	55	140	0.5	1.5	3/4"	100	4320	PNEUM.
TU-31	7C	S.W.	100/100	5"D	.50	1.3	35	55	140	0.5	1.5	3/4"	100	4320	PNEUM.
TU-32	7C	901	270/100	5"D	.50	1.3	35	55	140	0.5	1.5	3/4"	100	4320	PNEUM.

- NOTES: 1. PROVIDE DUCT TRANSITION AT UNIT WHERE UNIT INLET SIZE AND DUCT RUNOUT SIZE ARE DIFFERENT.
2. THE UNIT MAXIMUM SP IS THE PRESSURE DIFFERENCE BETWEEN THE UNIT INLET AND DISCHARGE, INCLUDING REHEAT COIL AND SOUND ATTENUATION WHERE APPLICABLE. IT IS ALSO MINIMUM PRESSURE REQUIRED AT THE UNIT INLET TO OBTAIN THE RATED CFM.
3. FOR APPLICABLE DUCT CONNECTION TO TERMINAL UNIT SEE (A) H-23

DIFFUSER & REGISTER SCHEDULE

SUPPLY AIR DIFFUSER		EXHAUST AIR REGISTER		RETURN AIR REGISTER	
I.D.NO	NECK	I.D.NO	NECK	I.D.NO	NECK
SD-1	6"D	ER-1	6x6	RR-1	6x6
SD-2	8"D	ER-2	8x8	RR-2	8x8
SD-3	10"D	ER-3	10x10	RR-3	10x10
SD-4	12"D	ER-4	12x12	RR-4	12x12
SD-5	14"D	ER-5	14x14	RR-5	14x14
SD-6	16"D	ER-6	16x16	RR-6	16x16

- NOTE: 1. ALL TOILET, SD, HAC, TRASH AND ELECTRICAL ROOM DOORS SHALL BE MIN. 1" UNDER CUT.
2. WHEN SPACE ALLOW, CONTRACTOR SHALL PROVIDE FLEXIBLE DUCT CONNECTION TO SUPPLY AIR DIFFUSERS ON THE LAST 5 FEET OF DUCT RUN.
3. FOR APPLICABLE DUCT CONNECTION TO SUPPLY AIR DIFFUSERS, SEE DETAIL (B) H-23 OR (A) H-23

PHASING:

- PHASE-A - THIS PHASE IS THE DEMOLITION AND RECONSTRUCTION OF THE SOUTH HALF OF FLOOR 3 THRU 11. (SEE SHEET CPM-2, CPM-11, CPM-12). ALL MECHANICAL AND RELATED SYSTEMS ON THE NORTH HALF SHALL REMAIN IN OPERATION DURING THIS PHASE.
PHASE-B - THIS PHASE IS THE DEMOLITION AND RECONSTRUCTION OF THE NORTH HALF OF FLOOR 3 THRU 11. (SEE SHEET CPM-2, CPM-11, CPM-12). ALL MECHANICAL AND RELATED SYSTEMS ON THE SOUTH HALF SHALL REMAIN IN OPERATION DURING THIS PHASE.

AMENDMENT NUMBER 1	8/29/94	ALBERT C. MARTIN & ASSOCIATES Planning Architecture Engineering Interiors 811 West Seventh Street Los Angeles, California 90017 213/683.1800		REGISTERED PROFESSIONAL ENGINEER MECHANICAL NO. 21671 STATE OF CALIFORNIA	Drawing Title NINTH FLOOR PLAN COOLING AND HEATING SYSTEM		Project Title Buildings 1 and 126 CORRECT STRUCTURAL SEISMIC DEFICIENCIES		Date JULY 28, 1994 Project No. 600-099-C		Office of Facilities Department of Veterans Affairs
Revisions	Date				Approved Project Director <i>Harold M. Lunde</i>		Building Number 126 Location 5901 E. SEVENTH STREET LONG BEACH, CALIFORNIA 90822		Drawing No. 126-H32A Des. of		