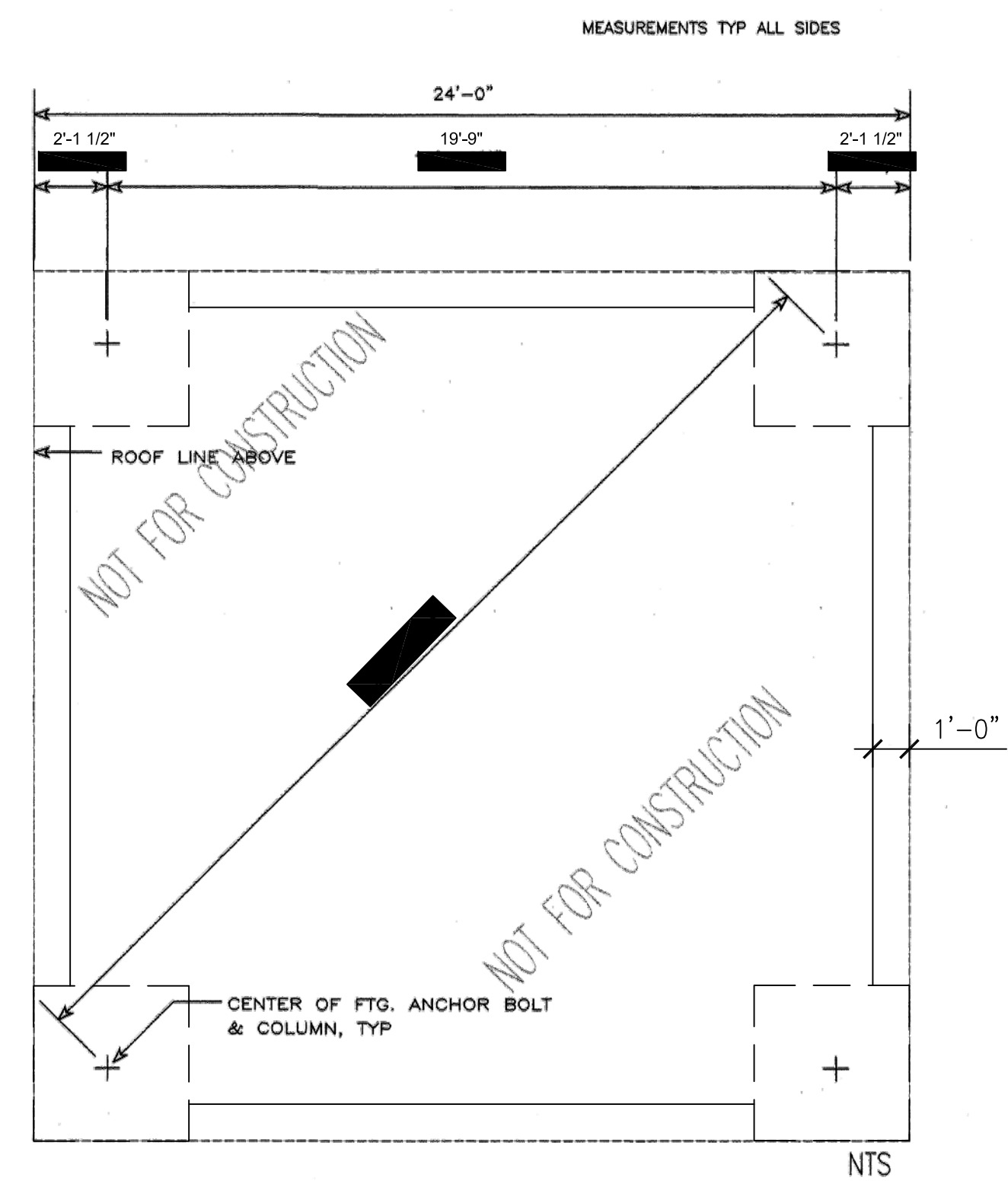


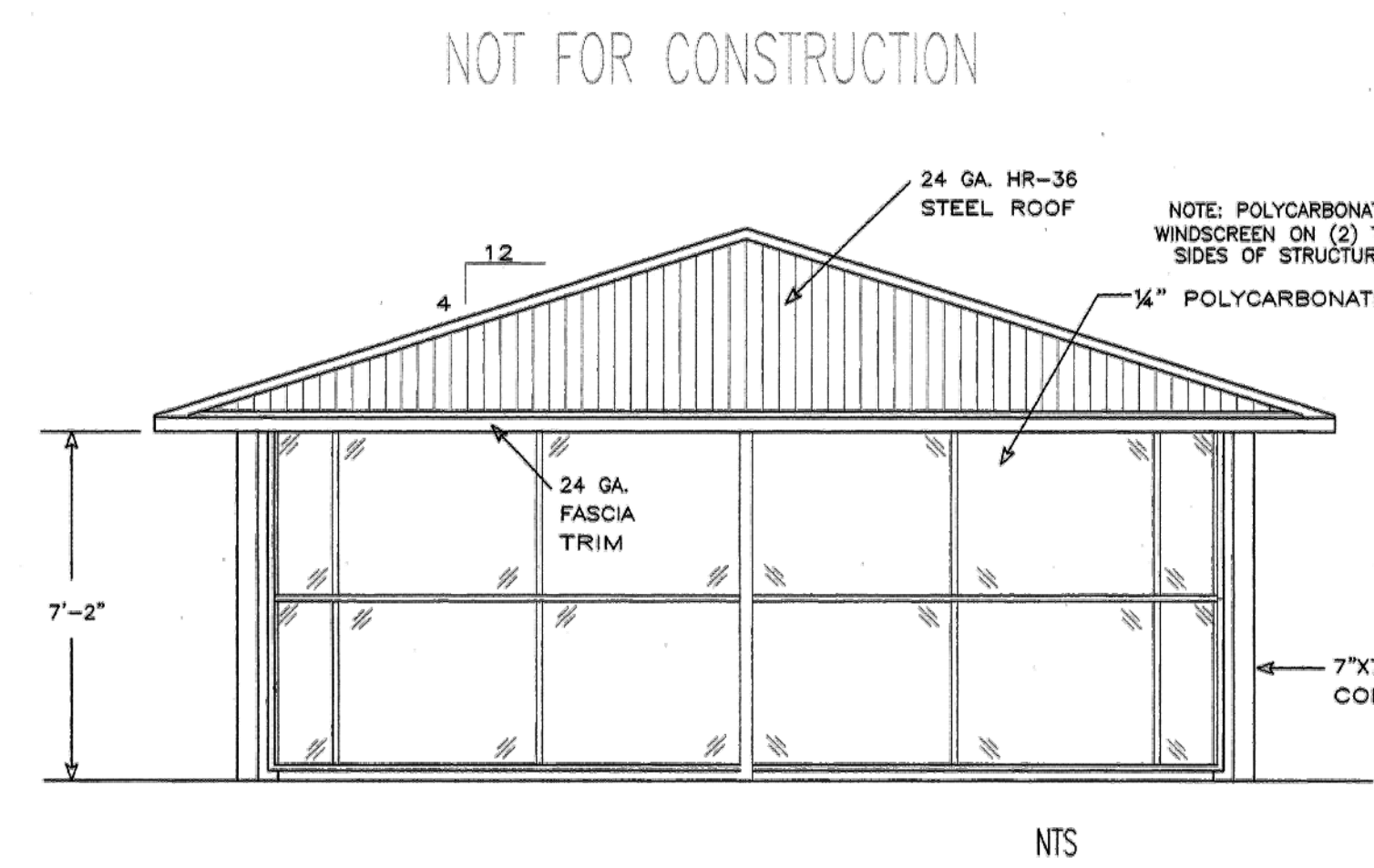
A

B

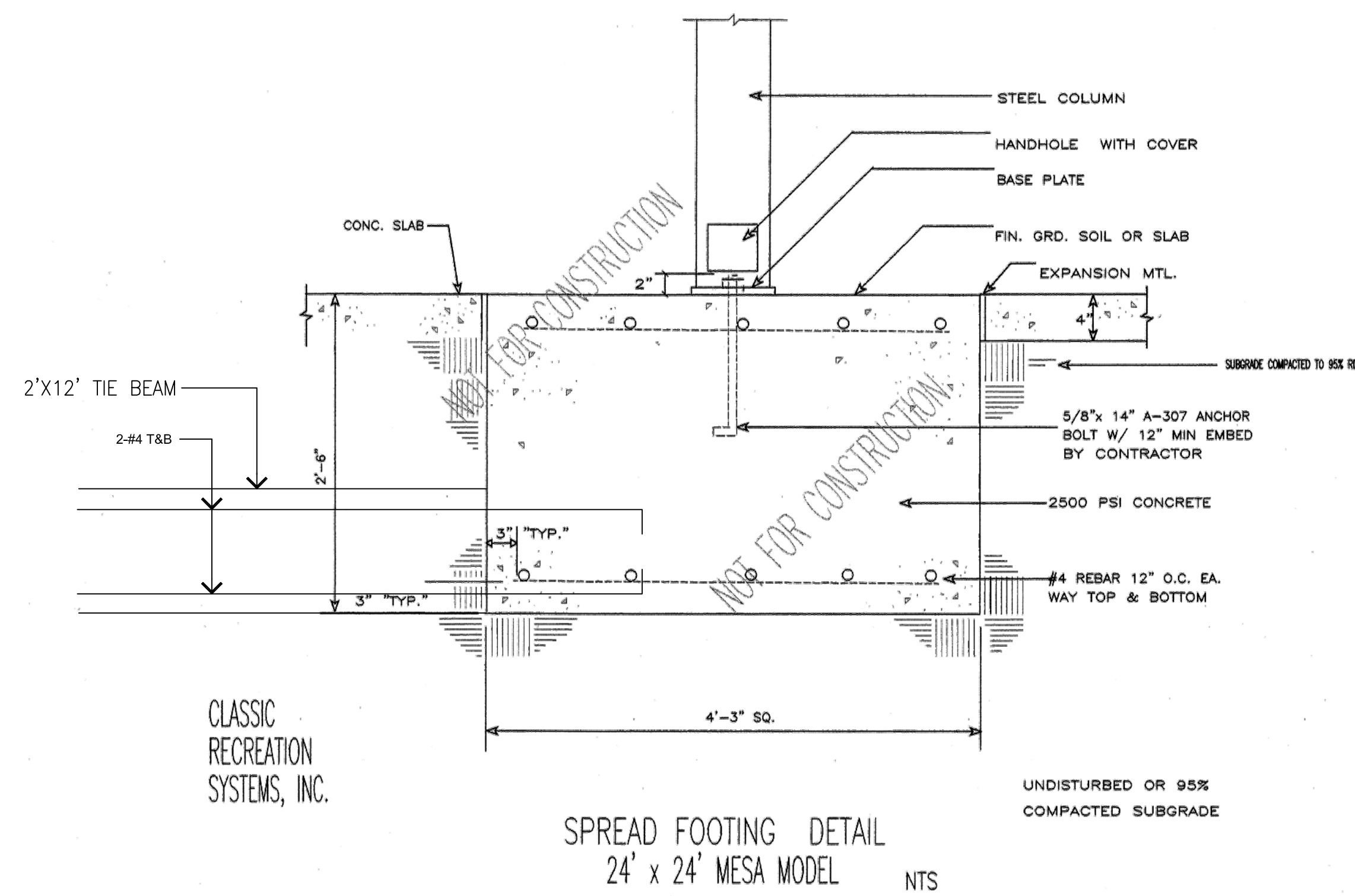


LAYOUT PLAN 24'X24' MESA MODEL

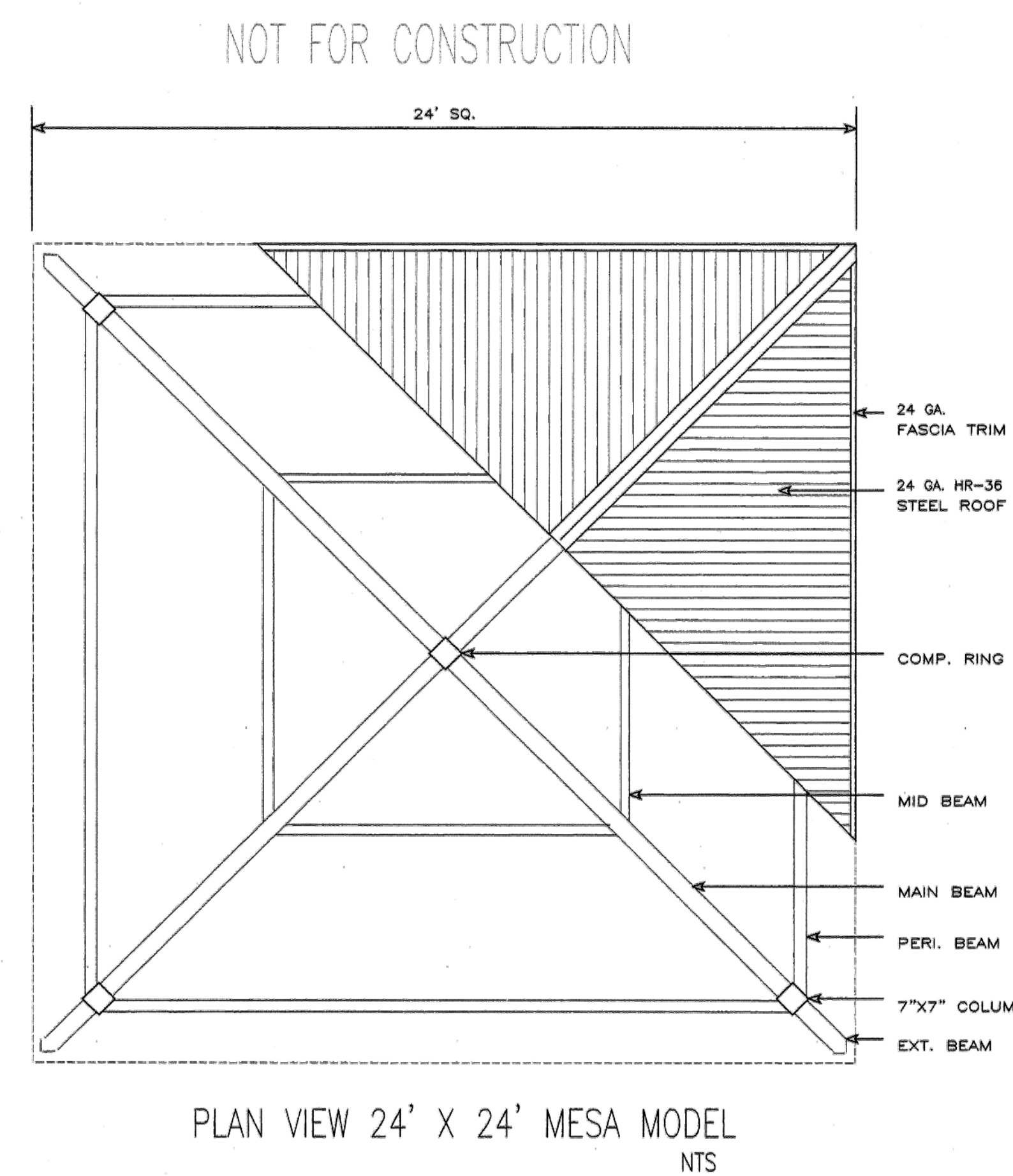
NOTE: [REDACTED] CONTRACTOR TO SUBMIT SHOP DRAWINGS FOR SHELTER AND FOUNDATION [REDACTED]



CLASSIC RECREATION SYSTEMS, INC.



SPREAD FOOTING DETAIL 24' x 24' MESA MODEL



PLAN VIEW 24' X 24' MESA MODEL

NOTE - COMMITTAL SHELTER PLANS ARE SHOWN HERE FOR CONTRACTORS' CONVENIENCE. TO OBTAIN MANUFACTURER'S PLANS AND INSTALLATION SPECIFICATIONS, CONTACT: CHRIS TAIT - ROSS RECREATION EQUIPMENT 916-985-6349

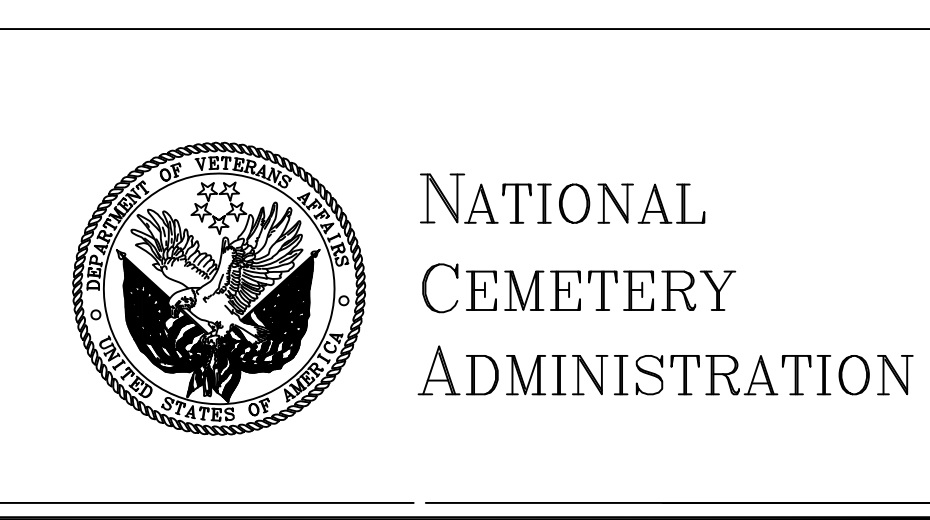
Construction Documents

S:\PD\District\2-ENG\9.0-Minor-Projects\FY18\KR\921-MM-FY18-001 Soc. Temporary Committal Shelter\BLD-3.dwg 12-20-17 11:03:45 AM cemRoystik

Revisions	Date

CONSULTANTS:

ARCHITECT/ENGINEERS:



Location
SACRAMENTO VALLEY NATIONAL CEMETERY
 5810 MIDWAY RD.
 DIXON, CA

Project Title
TEMPORARY COMMITTAL SHELTER

Approved
 Approved-Project Manager
 KR

Project Number
 921-MM-FY18-001

Date
 921-MM-FY18-001

Drawing Number
BLDG-3

Dwg. of