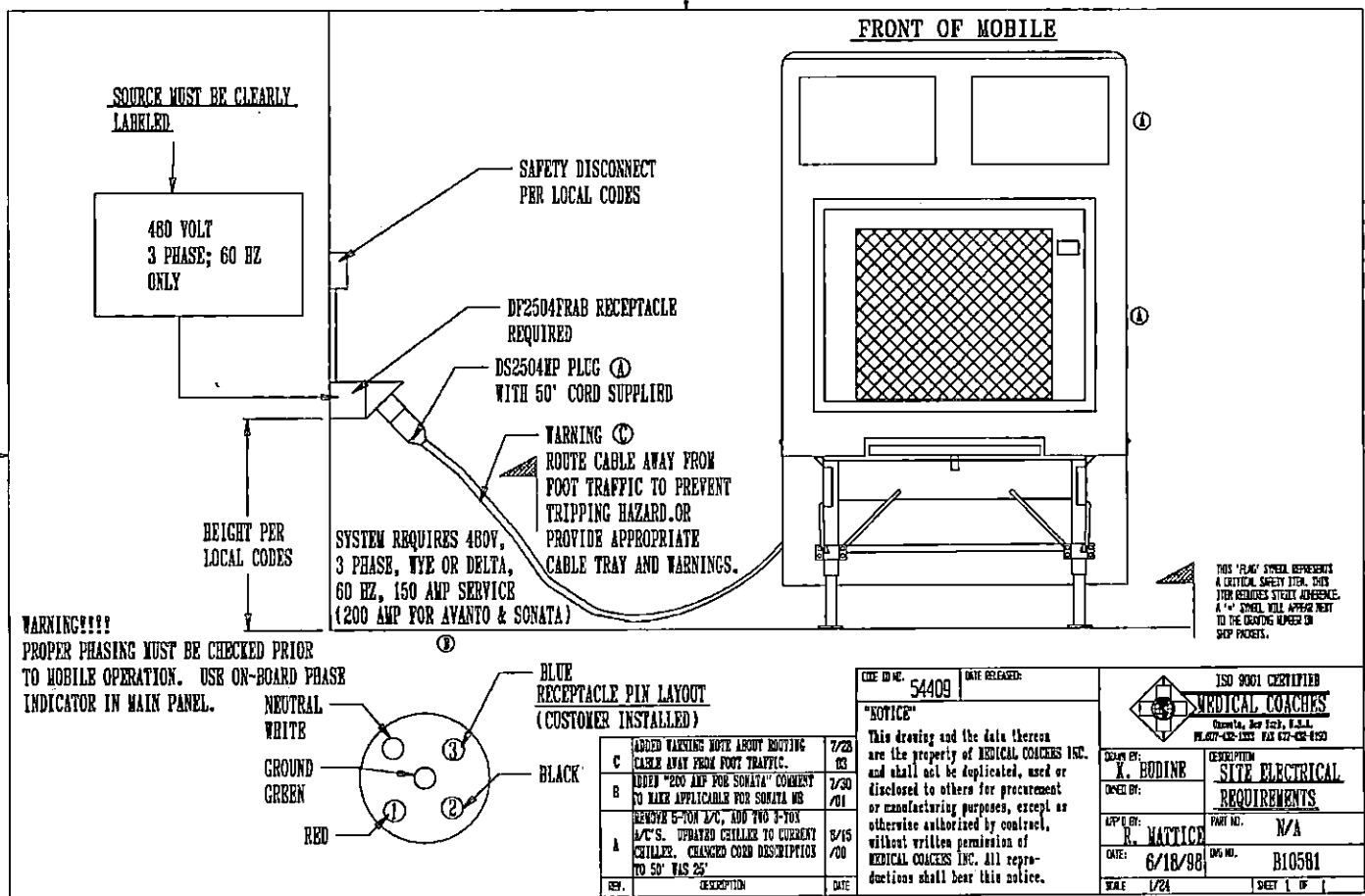
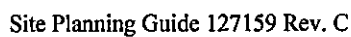




Site Electrical Drawing B10581





GENERAL NOTES

GENERAL

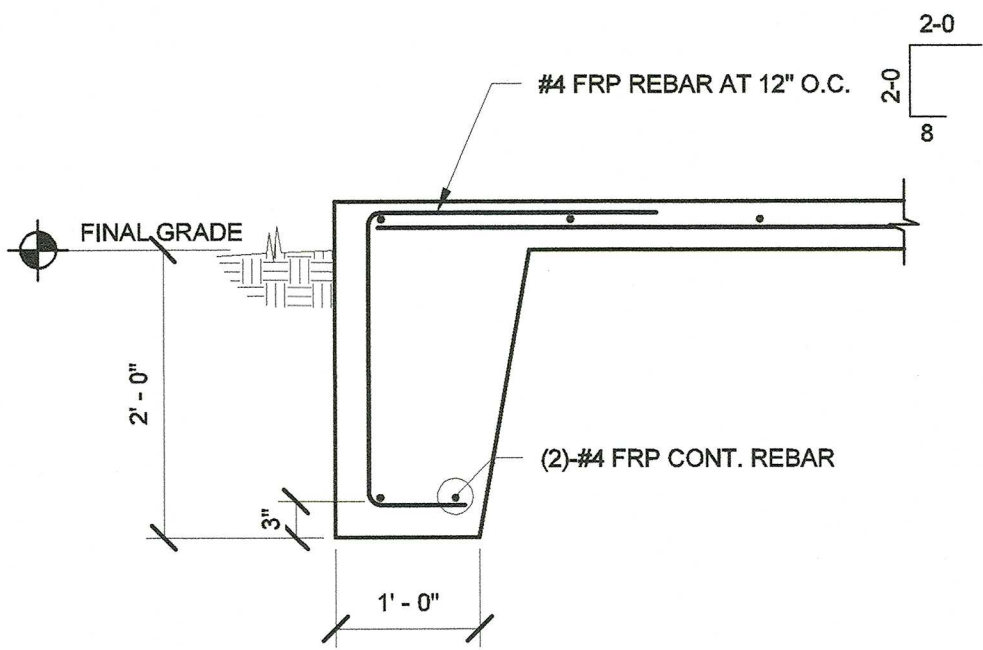
1. THE CONTRACT DOCUMENTS REPRESENT THE FINISHED STRUCTURE AND DO NOT INDICATE THE METHOD OF CONSTRUCTION, UNLESS NOTED OTHERWISE. THE CONTRACTOR IS SOLELY RESPONSIBLE FOR THE MEANS, METHODS, TECHNIQUES, SEQUENCES, AND OPERATION OF CONSTRUCTION AND SAFETY PRECAUTIONS AND PROGRAMS INCIDENTAL THERETO.
2. THE SIZE AND LOCATION OF EQUIPMENT PADS AND PENETRATIONS THROUGH THE STRUCTURE FOR MECHANICAL, ELECTRICAL, AND PLUMBING WORK SHALL BE VERIFIED BY THE CONTRACTOR. PENETRATIONS SHALL BE SUBJECT TO APPROVAL BY THE ENGINEER-OF-RECORD. REFER TO MECHANICAL, ELECTRICAL, AND PLUMBING DRAWINGS FOR OPENING LOCATIONS NOT SHOWN ON THE STRUCTURAL DRAWINGS.
3. USE ONLY DIMENSIONS INDICATED IN THE CONTRACT DOCUMENTS. DO NOT SCALE CONTRACT DOCUMENTS OR USE ANY DIMENSIONS TAKEN FROM ELECTRONIC DRAWING FILES.
4. ASSUME EQUAL SPACING IF NOT INDICATED IN CONTRACT DOCUMENTS.

FOUNDATIONS

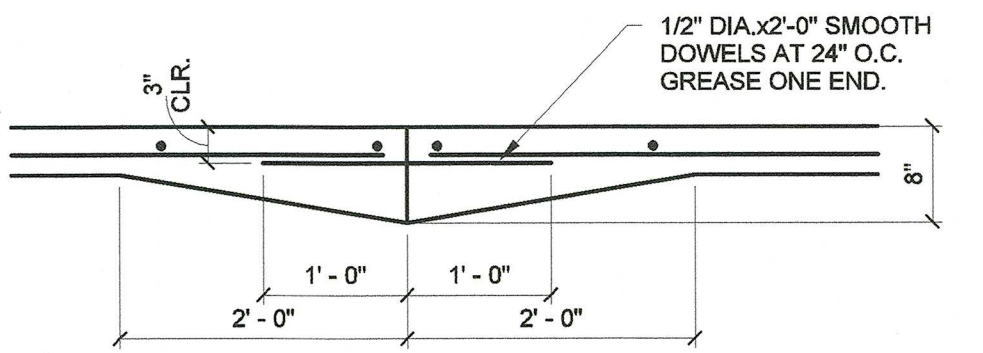
1. FOUNDATION DESIGNS, SUBGRADE PREPARATION NOTES, AND STRUCTURAL EARTH MOVING SPECIFICATION ARE BASED ON THE RECOMMENDATIONS PROVIDED IN THE GEOTECHNICAL REPORT NUMBER 03055150, BY: TERRACON CONSULTANTS INC. DATED: JUNE 10, 2005
2. CONTRACTOR AND TESTING LABORATORY REPRESENTATIVE SHALL READ THE GEOTECHNICAL REPORT AND BECOME THOROUGHLY FAMILIAR WITH SITE AND SUBGRADE INFORMATION GIVEN THEREIN. THE CONTRACTOR SHALL BE RESPONSIBLE FOR DETERMINING EXACT QUANTITIES OF CUT AND FILL FOR ESTIMATING AND CONSTRUCTION. SUBGRADE SHALL BE PREPARED AS NOTED IN THE STRUCTURAL EARTH MOVING SPECIFICATION.
3. A QUALIFIED AND REGISTERED GEOTECHNICAL ENGINEER, LICENSED IN THE STATE WHERE THE PROJECT IS LOCATED AND WORKING FOR THE TESTING LABORATORY, SHALL DETERMINE CONFORMANCE OF THE FOUNDATION BEARING STRATA WITH THE FOUNDATION DESIGN CRITERIA ABOVE, AND ALL OTHER CONTRACT DOCUMENTS. TESTING LABORATORY SHALL NOTIFY CONTRACTOR, ARCHITECT AND ENGINEER-OF-RECORD OF ANY CONDITIONS NOT IN ACCORDANCE WITH FOUNDATION DESIGN CRITERIA OR CONTRACT DOCUMENTS.
4. FOOTINGS SHALL BE POURED AGAINST UNDISTURBED SOIL, UNLESS NOTED OTHERWISE IN CONTRACT DOCUMENTS.
5. AVOID DAMAGE TO UNDERGROUND UTILITIES INCLUDING, BUT NOT LIMITED TO, WATER MAINS, SANITARY SEWERS AND BURIED CABLES WHICH MIGHT EXTEND ACROSS OR ADJOIN SITE.

CONCRETE

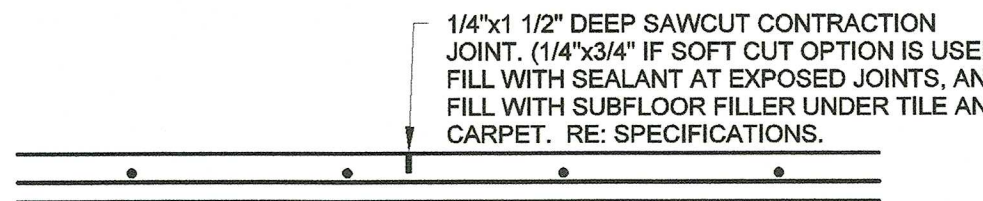
1. MIX DESIGN FOR EXTERIOR CONCRETE:
MINIMUM COMPRESSIVE STRENGTH: 3500 PSI AT 28 DAYS
MAXIMUM WATER CEMENTITIOUS MATERIAL RATIO: 0.45
SLUMP LIMIT: 4 INCHES PLUS OR MINUS 1 INCH
MAXIMUM COURSE AGGREGATE SIZE: 1 INCH
AIR CONTENT: 6%, PLUS OR MINUS 1.5%
2. EXTERIOR CONCRETE AND CONCRETE EXPOSED TO FREEZE-THAW CYCLES SHALL BE AIR-ENTRAINED. REFER TO CAST-IN-PLACE CONCRETE SPECIFICATION FOR AIR CONTENT.
3. MATERIALS OR ADMIXTURES SHALL NOT CONTAIN ANY CALCIUM CHLORIDE.
4. FIBER REINFORCED POLYMER REINFORCEMENT SHALL BE HIGH-STRENGTH, HIGH MODULUS, UNIDIRECTIONAL CARBON FIBER REINFORCED POLYMER ADHERING TO TESTING REQUIREMENTS SPECIFIED IN ASTM D9039
5. REFER TO ACI 318 LATEST EDITION FOR CONCRETE COVER, ACI 315 LATEST EDITION FOR DETAILING PRACTICES AND FABRICATION, AND ACI 301 LATEST EDITION FOR STANDARD PRACTICE FOR MIXING AND PLACING CONCRETE.
6. "C.J." INDICATES SAW CUT CONTRACTION JOINT OR DOWELED CONSTRUCTION JOINT IN SLAB-ON-GRADE. REFERENCE CAST-IN-PLACE CONCRETE SPECIFICATION FOR ACCEPTED SAW CUT METHODS. SLAB POURED SHALL BE SEPARATED BY A DOWELED CONSTRUCTION JOINT. CONTRACTION/CONSTRUCTION JOINTS SHALL BE LOCATED AS SHOWN ON PLANS OR AS DIRECTED BY THE ENGINEER-OF-RECORD.
7. SLAB SHALL HAVE A FLOOR FLATNESS (FF) VALUE OF 25 OR GREATER, FLOOR LEVELNESS (FL) VALUE SHALL BE 25 OR GREATER.



3 SLAB TURN DOWN DETAIL
3/4" = 1'-0"

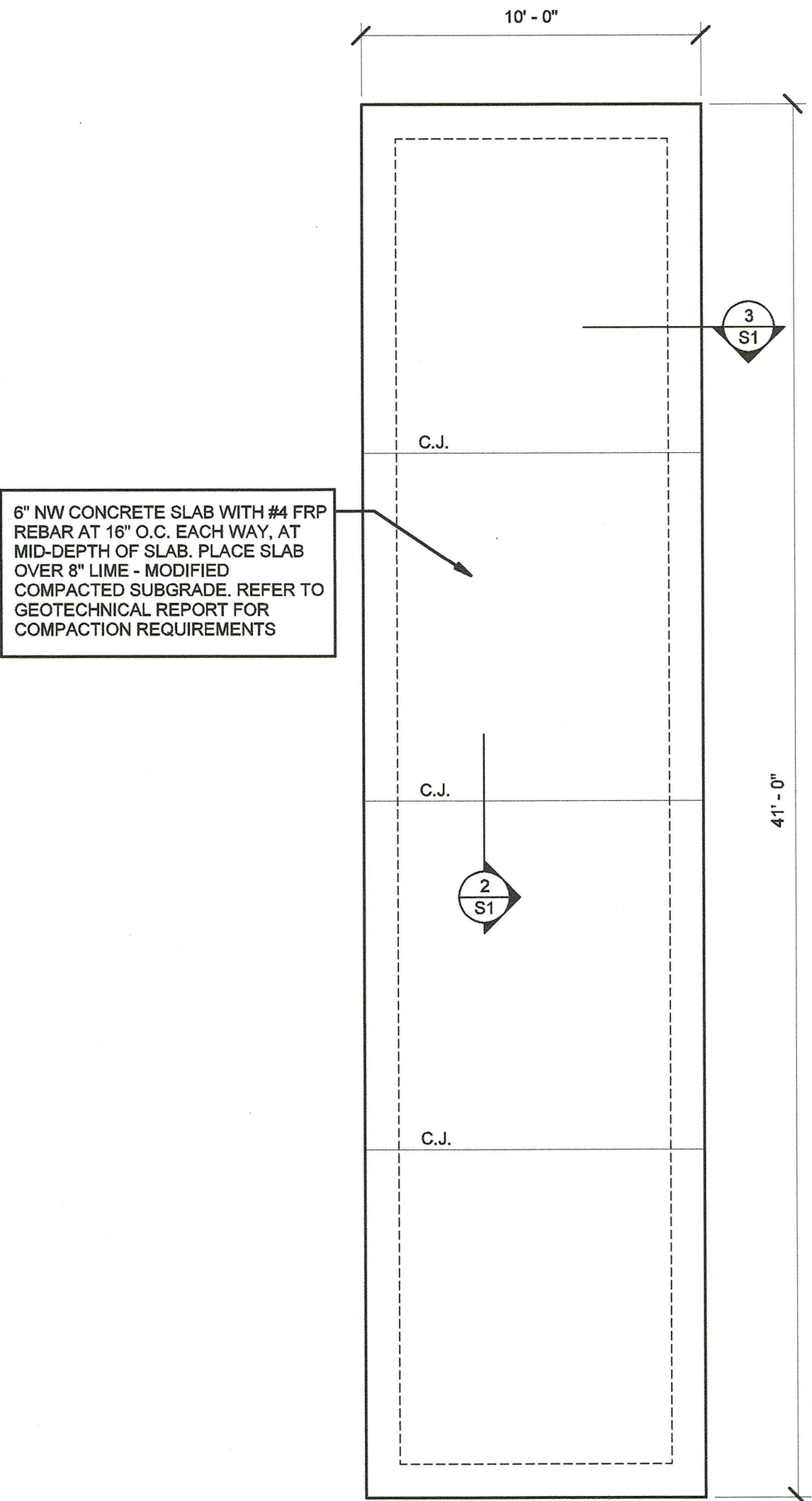


CONSTRUCTION JOINT (CONST. JT.)



CONTRACTION JOINT (C.J.)

2 SLAB JOINT DETAILS
3/4" = 1'-0"



1 SLAB PLAN
1/4" = 1'-0"

PORTABLE MRI TRAILER
SLAB DESIGN

N.E. LAURIE TATUM ROAD
LAWTON INDIAN HOSPITAL

CONSTRUCTION
DOCUMENTS

FEBRUARY 3, 2017

ISSUE LOG

#	DATE	DESCRIPTION
---	------	-------------

JOB #: 1760027

DWN. BY SM CHK. BY SJ

SLAB PLAN
AND DETAILS

SHEET NO.

S1

