



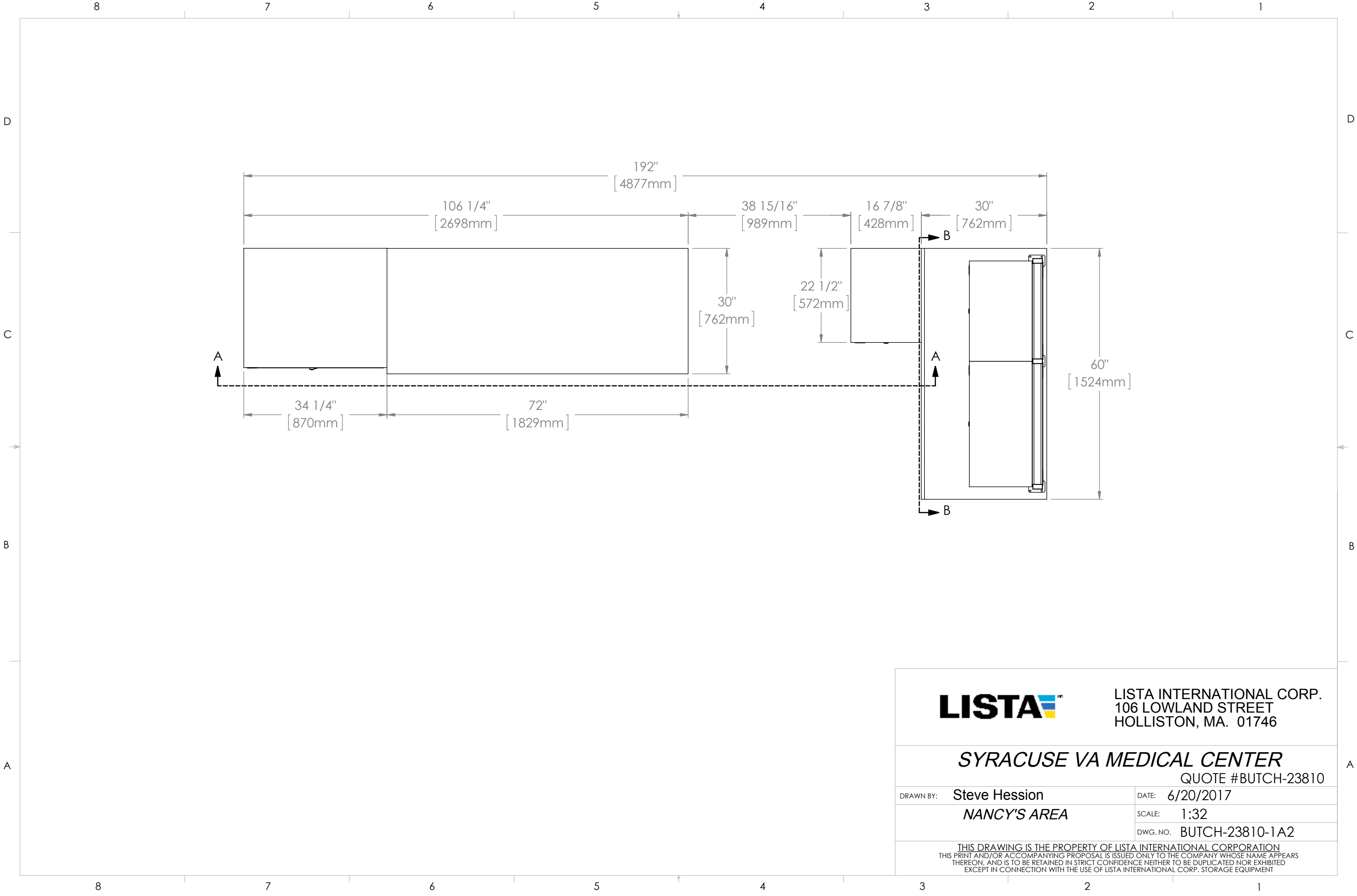
**Installation.**  
Unless otherwise specified, Seller assumes no obligation to install any products sold or to place any products in working order at Buyer's premises. In the event that Seller's products are installed by Seller or its designated third-party installer, such installer shall be responsible for any direct damages incurred by Buyer in the event of improper installation or the installer's negligence. Seller or its designated third-party installer shall not, however, have any liability hereunder for any incidental, indirect or consequential damages arising out of the installation of the products. If Buyer designates the installer, Seller shall have no liability arising out of or in connection with the installation of the products, and Buyer hereby waives any such claims against Seller.

LISTA INTERNATIONAL CORP.  
106 LOWLAND STREET  
HOLLISTON, MA. 01746

**SYRACUSE VA MEDICAL CENTER**  
QUOTE #BUTCH-23810

DRAWN BY: Steve Hession	DATE: 6/20/2017
NANCY'S AREA	SCALE: 1:32
	DWG. NO. BUTCH-23810-1A1

THIS DRAWING IS THE PROPERTY OF LISTA INTERNATIONAL CORPORATION  
THIS PRINT AND/OR ACCOMPANYING PROPOSAL IS ISSUED ONLY TO THE COMPANY WHOSE NAME APPEARS  
THEREON, AND IS TO BE RETAINED IN STRICT CONFIDENCE NEITHER TO BE DUPLICATED NOR EXHIBITED  
EXCEPT IN CONNECTION WITH THE USE OF LISTA INTERNATIONAL CORP. STORAGE EQUIPMENT



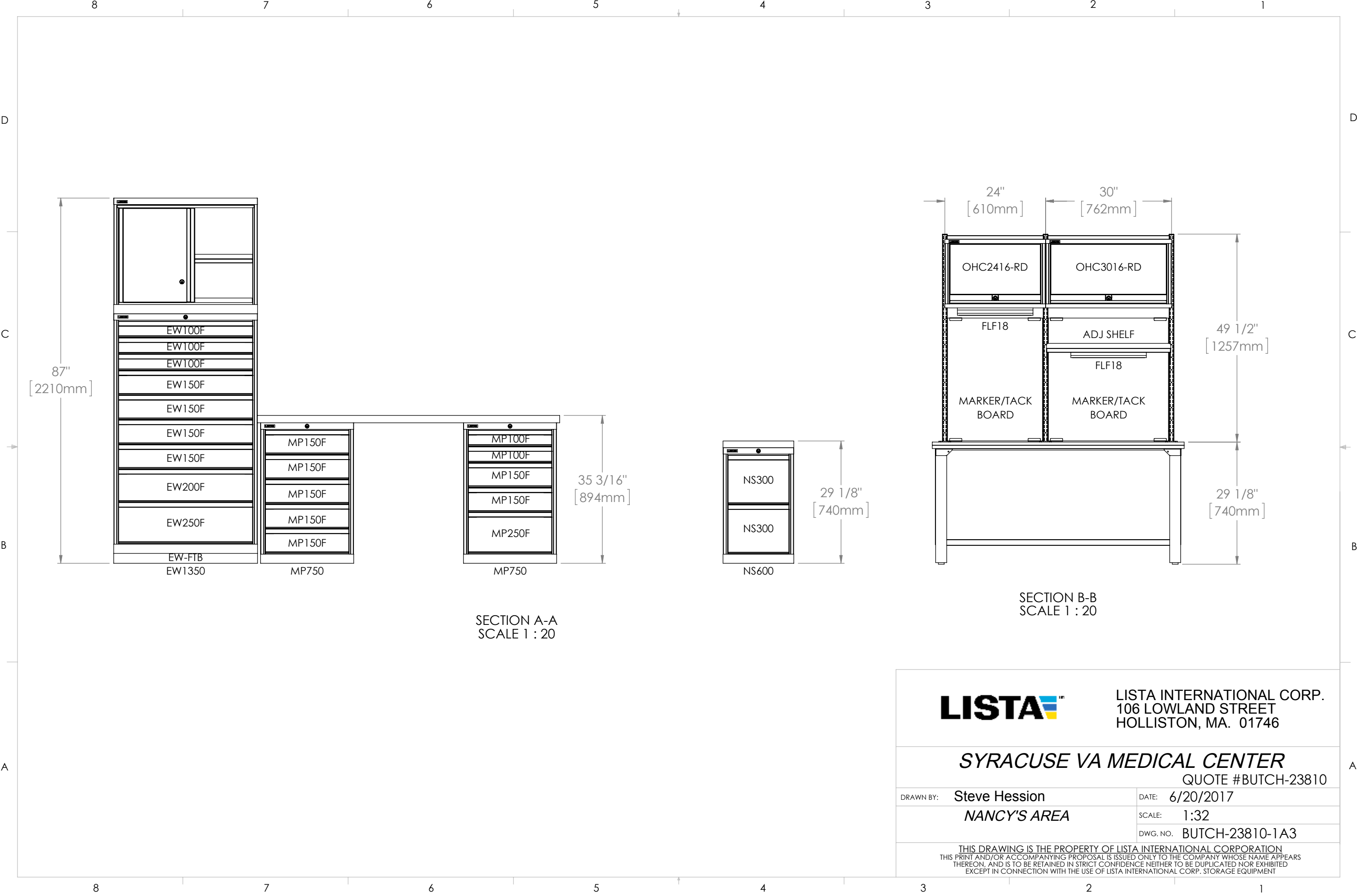
LISTA INTERNATIONAL CORP.  
106 LOWLAND STREET  
HOLLISTON, MA. 01746

**SYRACUSE VA MEDICAL CENTER**

QUOTE #BUTCH-23810

DRAWN BY:	Steve Hession	DATE:	6/20/2017
	NANCY'S AREA	SCALE:	1:32
		DWG. NO.	BUTCH-23810-1A2

THIS DRAWING IS THE PROPERTY OF LISTA INTERNATIONAL CORPORATION  
THIS PRINT AND/OR ACCOMPANYING PROPOSAL IS ISSUED ONLY TO THE COMPANY WHOSE NAME APPEARS  
THEREON, AND IS TO BE RETAINED IN STRICT CONFIDENCE NEITHER TO BE DUPLICATED NOR EXHIBITED  
EXCEPT IN CONNECTION WITH THE USE OF LISTA INTERNATIONAL CORP. STORAGE EQUIPMENT



LISTA INTERNATIONAL CORP.  
106 LOWLAND STREET  
HOLLISTON, MA. 01746

**SYRACUSE VA MEDICAL CENTER**

QUOTE #BUTCH-23810

DRAWN BY: Steve Hession	DATE: 6/20/2017
NANCY'S AREA	SCALE: 1:32
	DWG. NO. BUTCH-23810-1A3

THIS DRAWING IS THE PROPERTY OF LISTA INTERNATIONAL CORPORATION  
THIS PRINT AND/OR ACCOMPANYING PROPOSAL IS ISSUED ONLY TO THE COMPANY WHOSE NAME APPEARS  
THEREON, AND IS TO BE RETAINED IN STRICT CONFIDENCE NEITHER TO BE DUPLICATED NOR EXHIBITED  
EXCEPT IN CONNECTION WITH THE USE OF LISTA INTERNATIONAL CORP. STORAGE EQUIPMENT