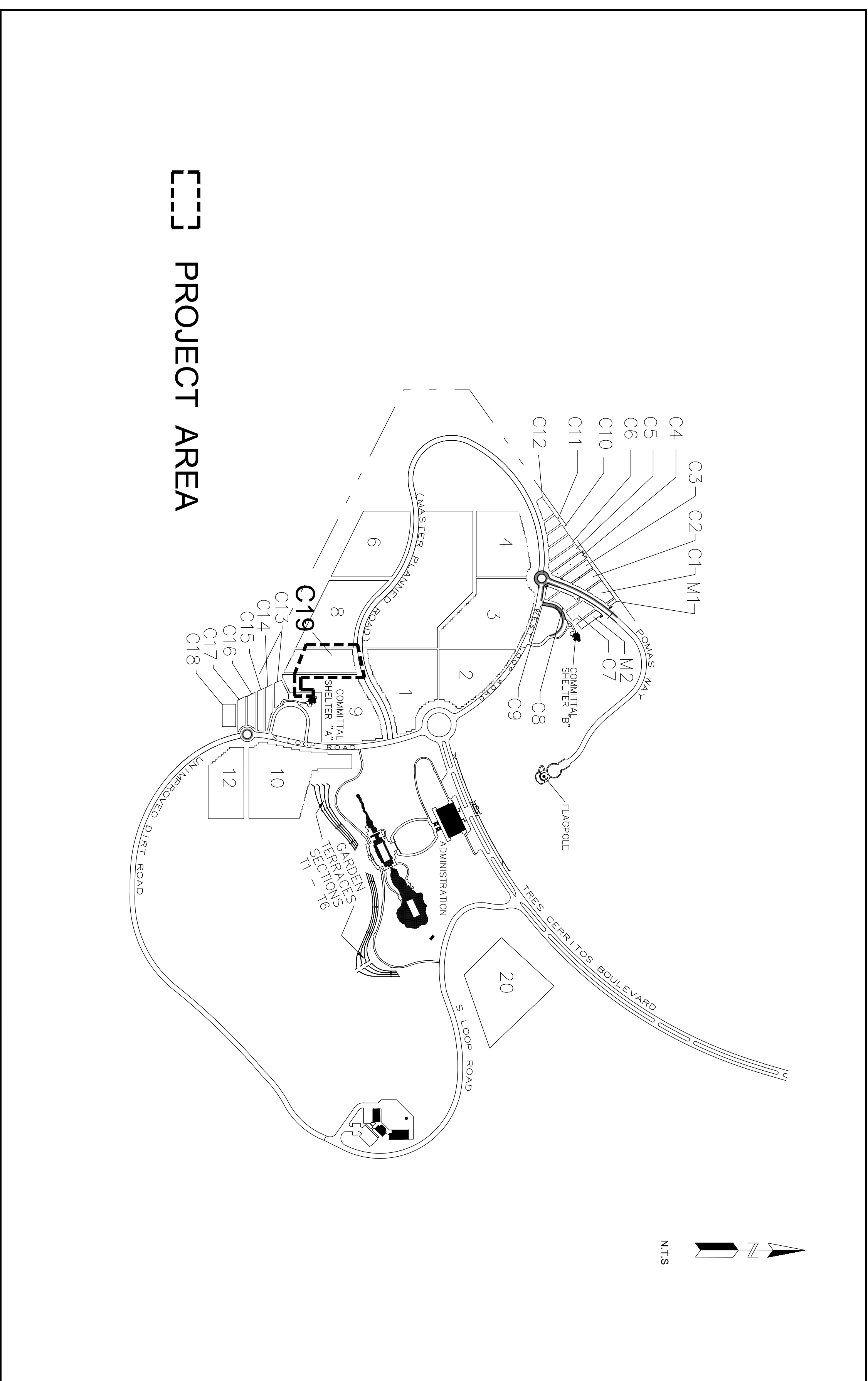


SAN JOAQUIN VALLEY NATIONAL CEMETERY

SECTION C-19 IRRIGATION & PLANTING

CITY OF SANTA NELLA
MERCED COUNTY, CALIFORNIA
VIA PROJECT NO.: 913-MM-FY18-009

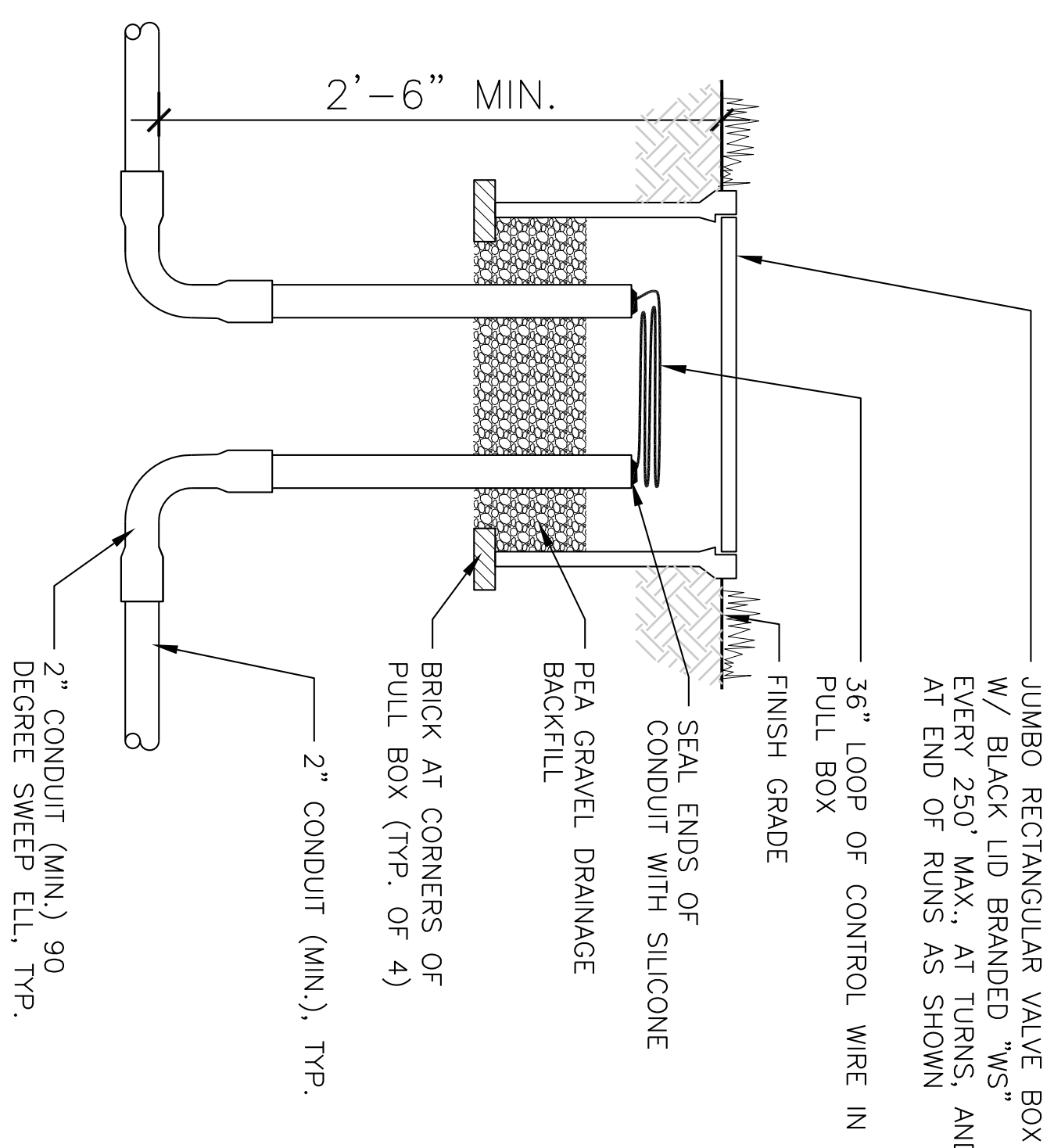
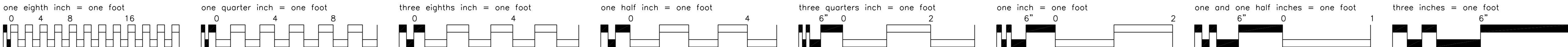


SCHEDULE OF DRAWINGS		
Sequence #	Sheet #	Title
1	L-001	TITLE SHEET
2	L-002	IRRIGATION PLAN
3	L-003	IRRIGATION DETAILS
4	L-004	PLANTING PLAN
5	L-005	PLANTING DETAILS

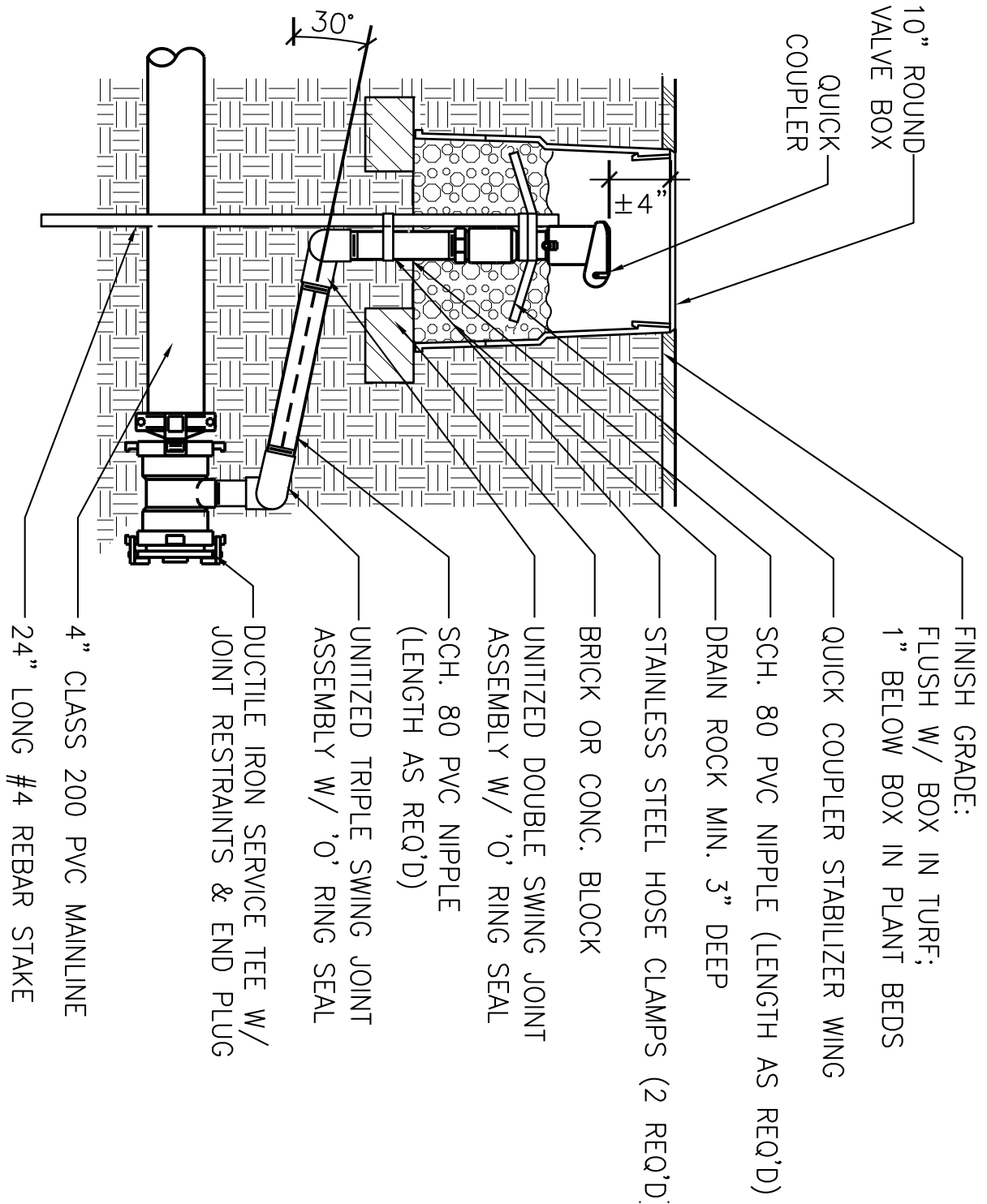
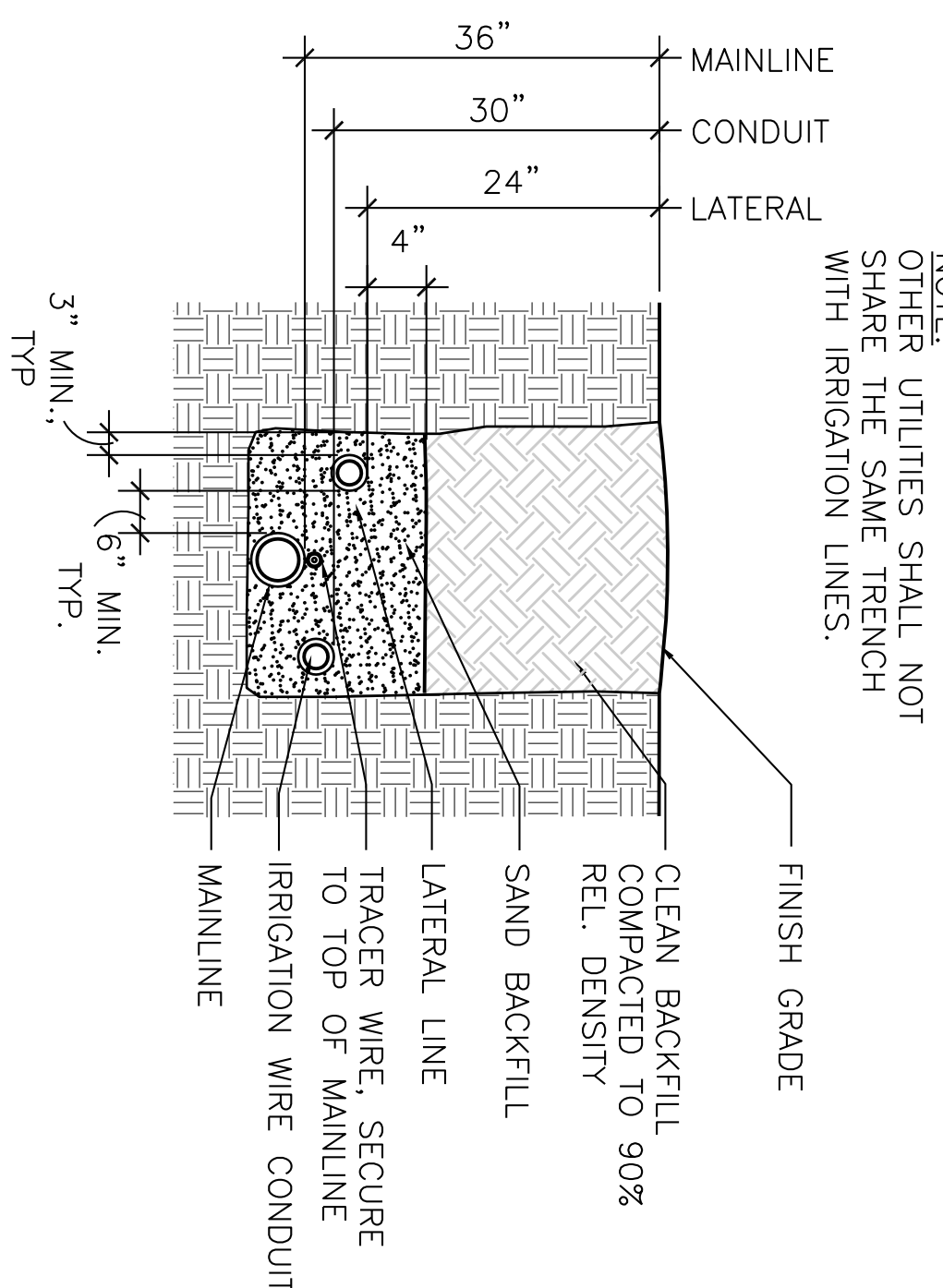
ABBREVIATIONS

AC	ACRE
AL	Elevation
FE	FERT
NTS	Not to Scale
FT	Scale feet
IN	inch
DIA	Diameter
LBS	Pounds
Hwy	Highway
UN O	Typical Unadorned
EX	Existing
SCH	Schedule
N/A	Not Applicable
CONT	Continuous
CAV	Canvassed
REQD	Required
FEED	Feed
MIN	Minimum
MAX	Maximum
AG	Aggregate

[illegible]

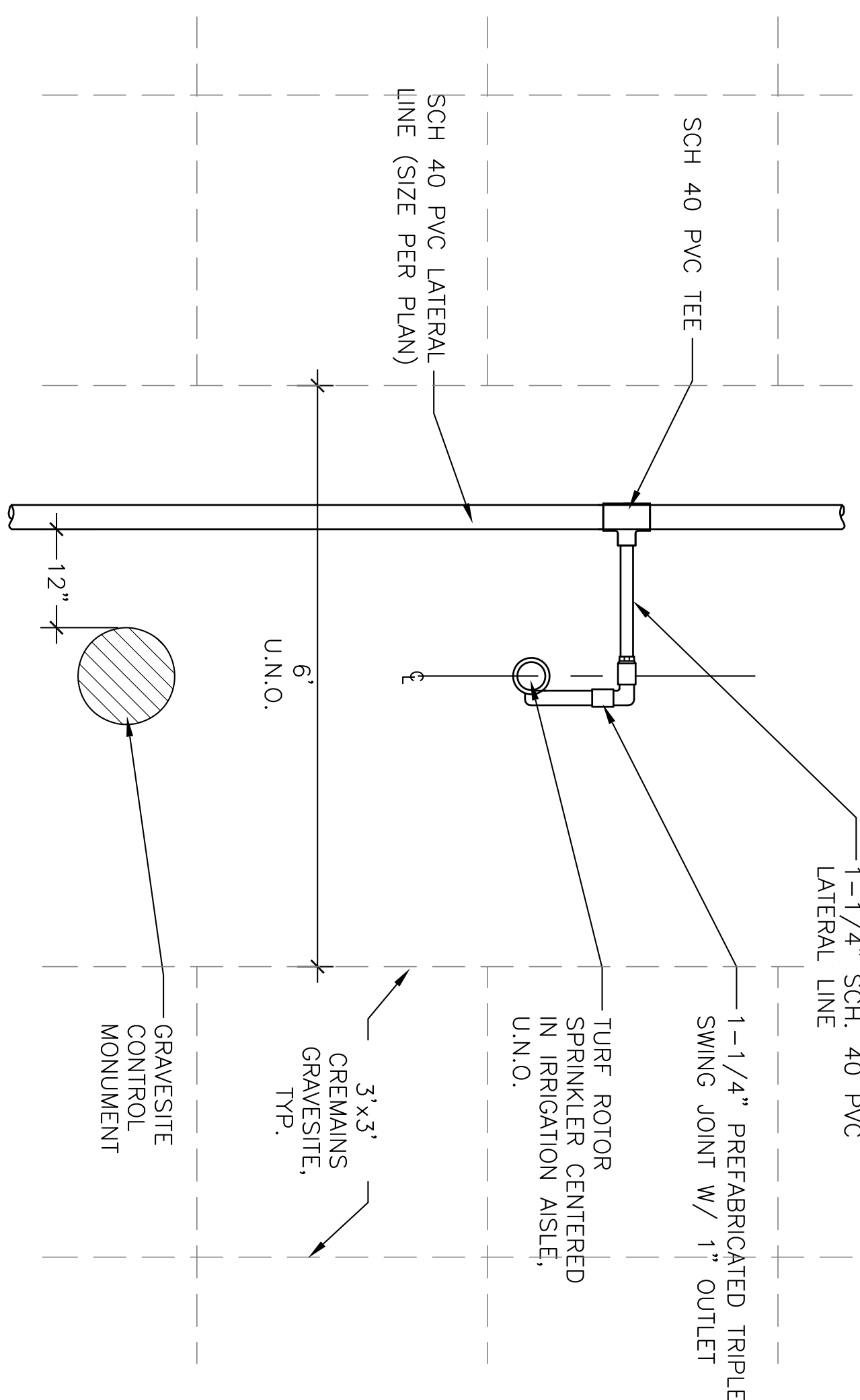


1. NOTES:
a. PROVIDE (2) 2" DIA. CONDUIT RUNS WITH CONTROL WIRES FOR EACH OF THE TWO CONTROLLERS AS INDICATED.
2. CONTROL WIRE COLORS SHALL MATCH THOSE OF EXISTING CONTROLLERS: RED FOR CONTROLLER #1; AND YELLOW FOR CONTROLLER #3.
3. PROVIDE SELF-ADHESIVE LABELS IDENTIFYING CONTROL WIRE STATION NUMBERS FOR ALL EXISTING AND NEW CONTROL WIRES. PROVIDE LABELS AT BOTH ENDS OF THE WIRES: AT THE CONTROLLER AND AT THE SUB-OUT FOR FUTURE EXPANSION.



8 QUICK COUPLING VALVE
SCALE: 1" = 1'-0"

2. CONTROL MONUMENTS FOR APPROVAL OF COR.
LOCATE SPRINKLER IN CENTER OF IRRIGATION AISLE
UNLESS SHOWN OTHERWISE.

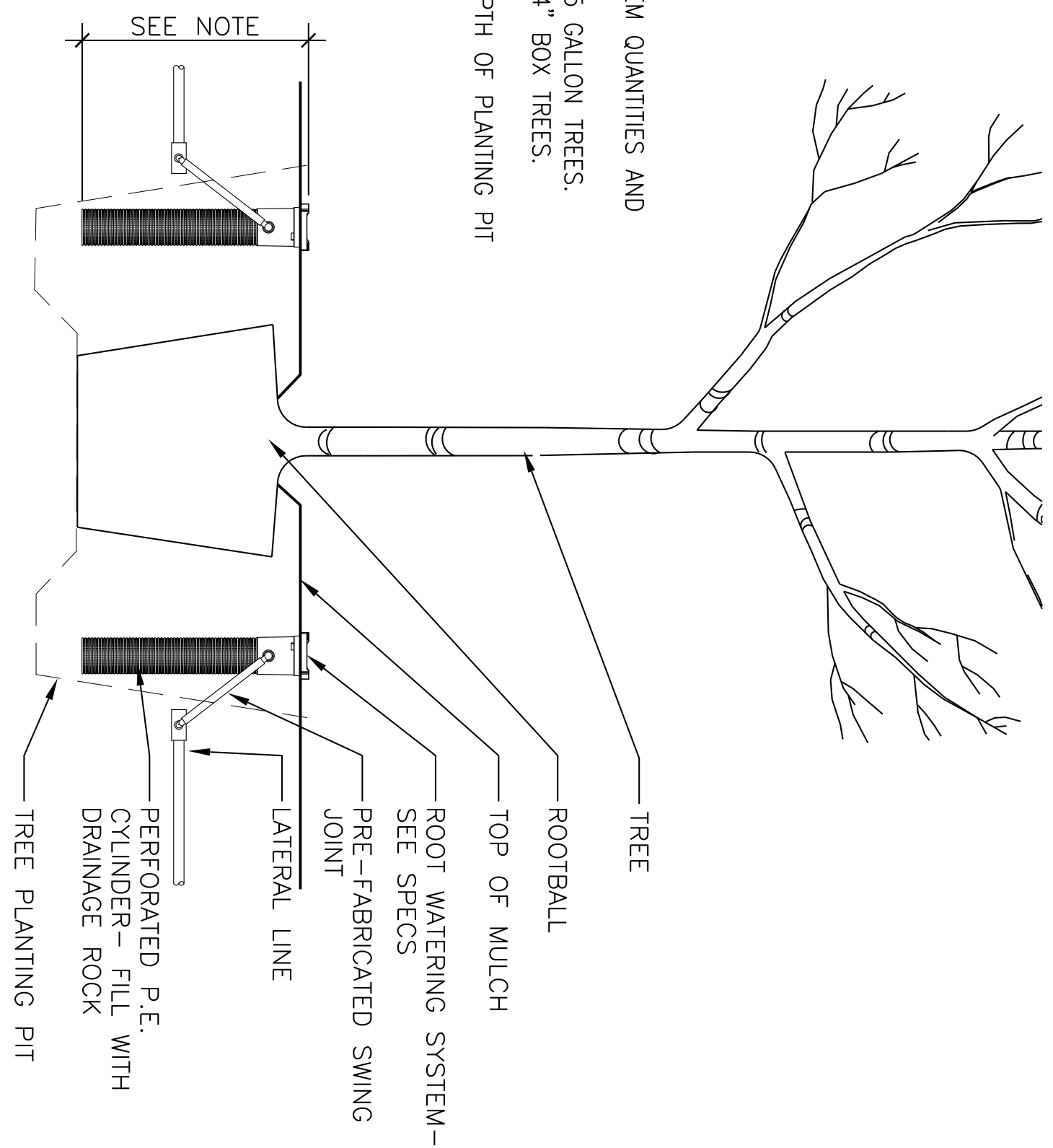


9) SPRINKLER HEAD LAYOUT IN IRRIGATION AISLE
SCALE: 3/4" = 1'-0"



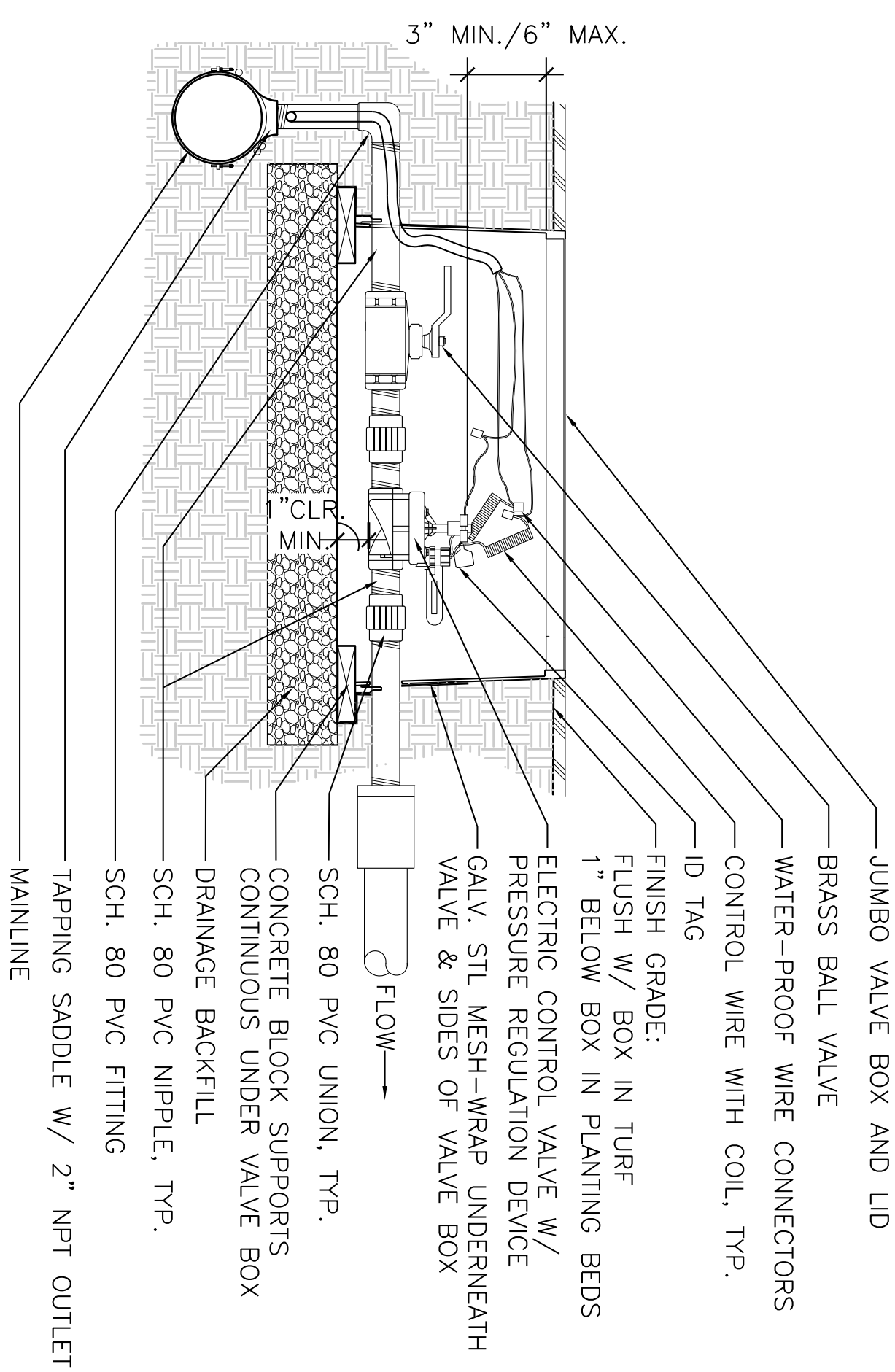
POP-UP TURF ROTOR HEAD
SCALE: 1" = 1'-0"

- SECTION



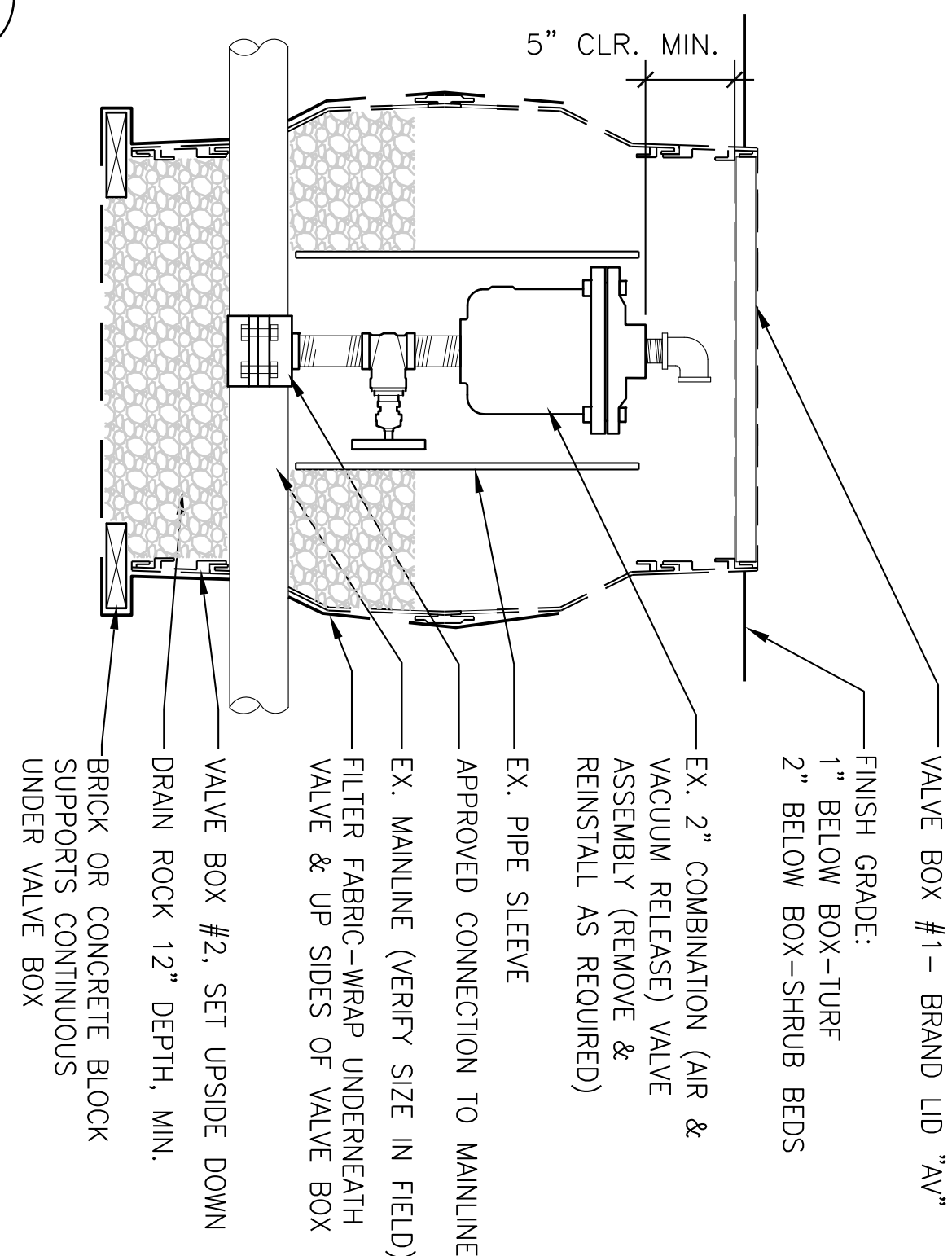
TREE DEEP ROOT WATERING SYSTEM
SCALE: 1" = 1'-0"

- SECTION



2 PRESSURE REGULATING REMOTE CONTROL VALVE
SCALE: 1" = 1' - 0"




- NOTES:
1. REMOVE AND REINSTALL EXISTING COMBINATION VALVE ASSEMBLY AS REQUIRED FOR INSTALLATION OF QUICK COUPLER AND MAINLINE PLUG ASSEMBLY.
2. "APPROVED CONNECTION TO MAINLINE" ARE: DUCTILE IRON SERVICE TEE AND JOINT RESTRAINTS, OR TAPPING SADDLE.



COMBINATION VALVE
SCALE: 1" = 1'-0"

- SECTION

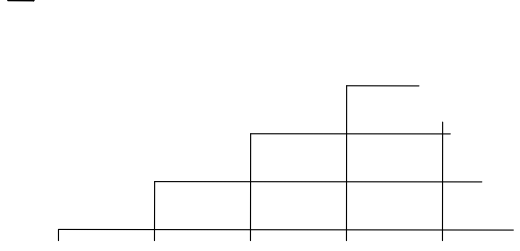
[illegible]

- | SYMBOL | QUANTITY | KEY | BOTANICAL NAME | COMMON NAME | SIZE | HTS/SPREAD |
|---|----------|------|--------------------------------|----------------------------|-----------|------------|
|  | 13 | GIBI | GINKGO BILOBA 'FAIRMONT' | MAIDENHAIR TREE | 24" BOX | 8'x3' |
|  | 3 | PLAC | PLATANUS ACERIFOLIA 'COLUMBIA' | COLUMBIA LONDON PLANE TREE | 24" BOX | 14'x5' |
|  | 13 | PONI | POPULUS NIGRA 'ITALICA' | LOMBARDY POPLAR | 15 GALLON | 12'x4' |
- NOTE: ALL TREES SHALL BE LOW-BRANCHING STANDARDS WITH STRONG CENTRAL LEADER

TREE SCHEDULE

SYMBOL	QUANTITY	KEY	BOTANICAL NAME	COMMON NAME	SIZE	HTXSPREAD
	13	GIBI	GINKGO BILOBA 'FAIRMONT'	MAIDENHAIR TREE	24" BOX	8'x3'
	3	PLAC	PLATANUS ACERIFOLIA 'COLUMBIA'	COLUMBIA LONDON PLANE TREE	24" BOX	14'x5'
	13	PONI	POPULUS NIGRA 'ITALICA'	LOMBARDY POPLAR	15 GALLON	12'x4'

STRONG CENTRAL LEADER

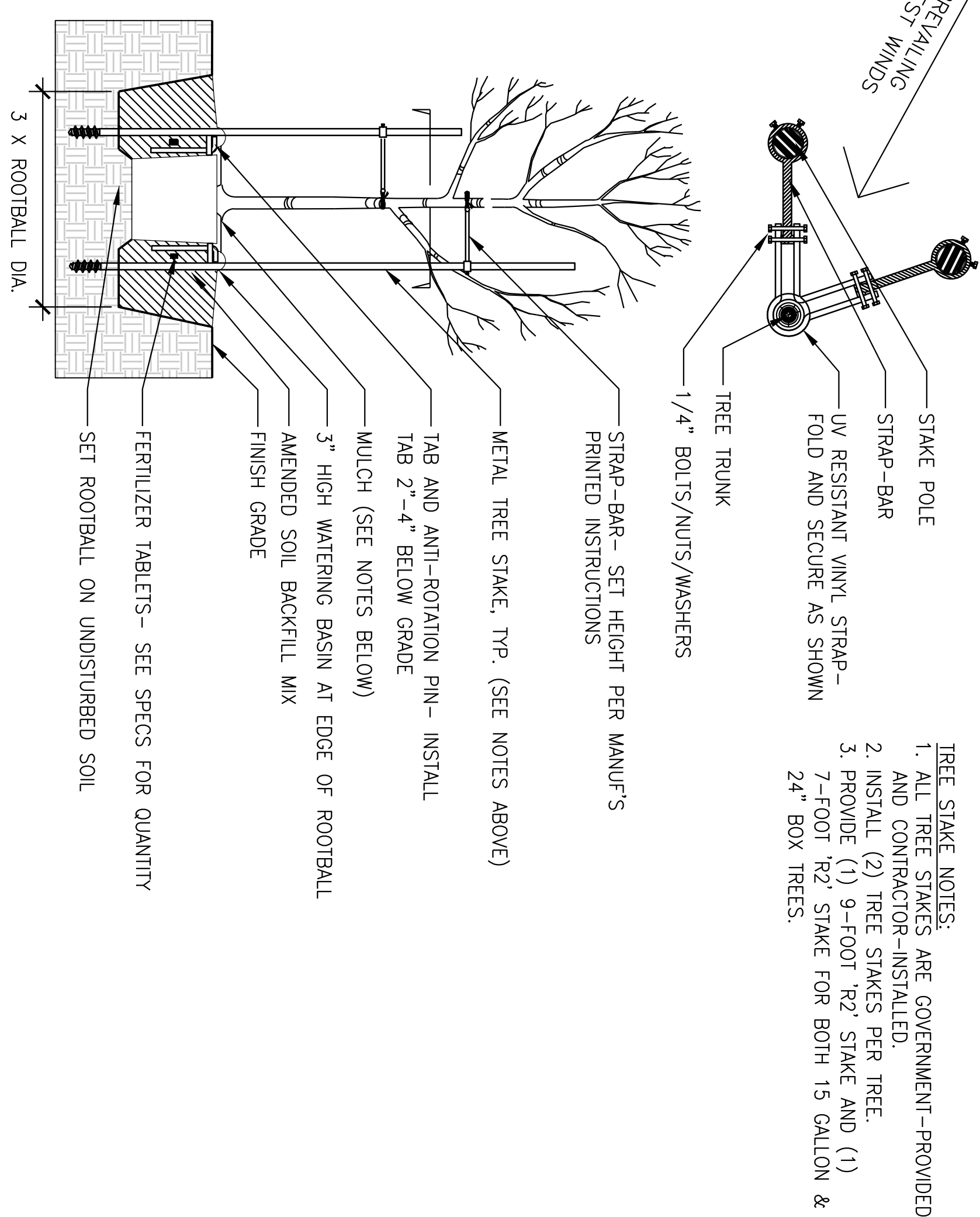
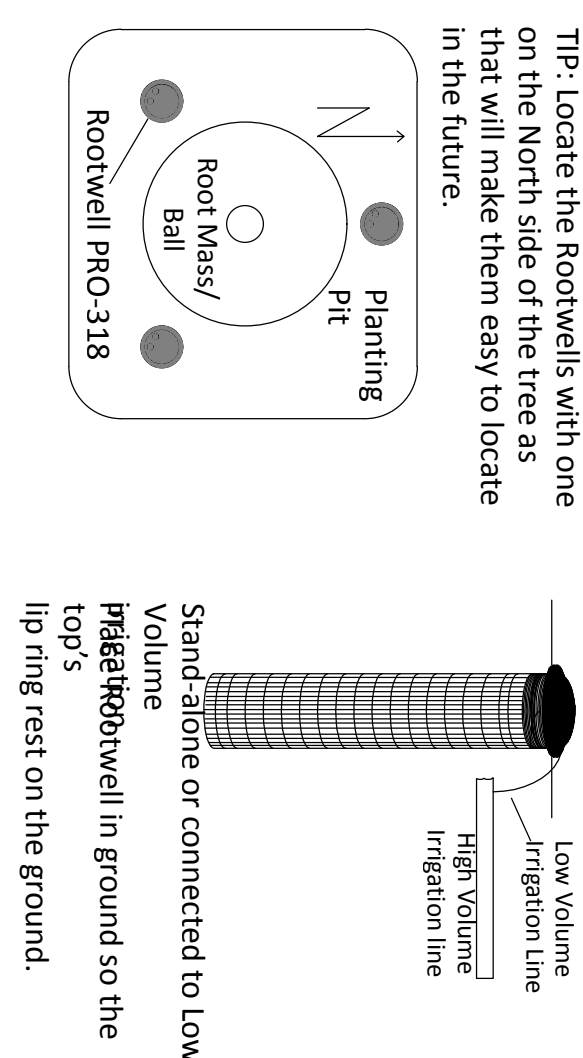
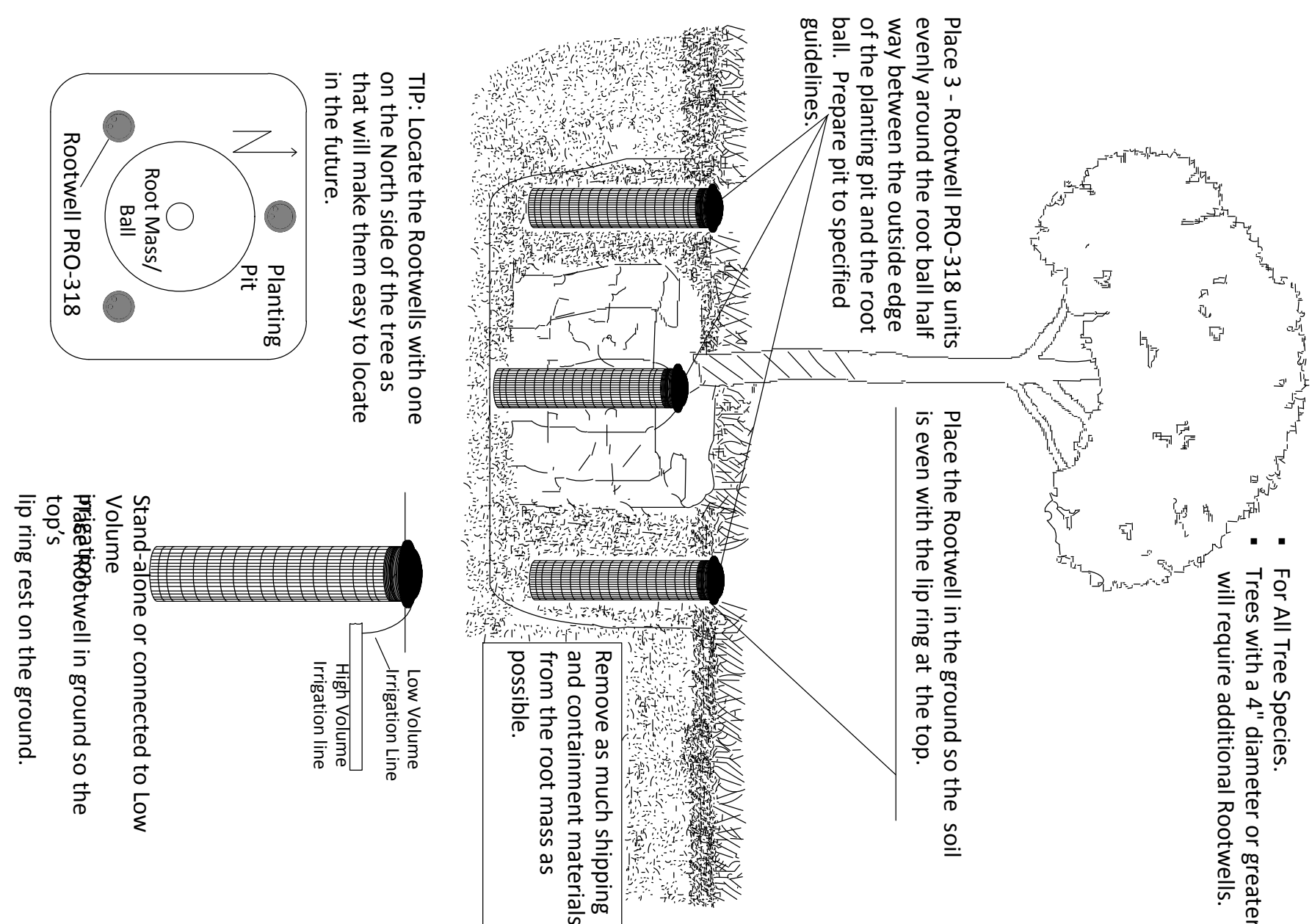
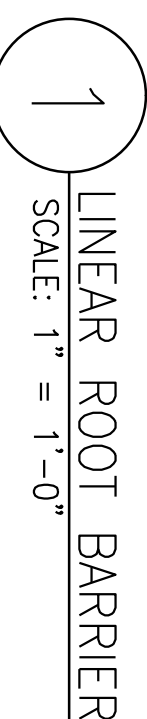
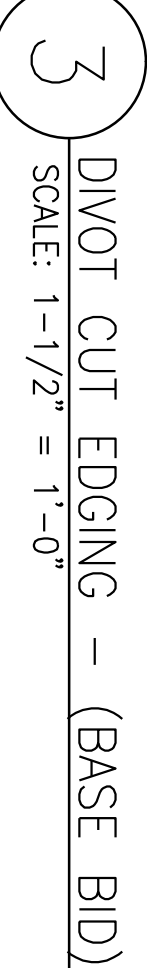
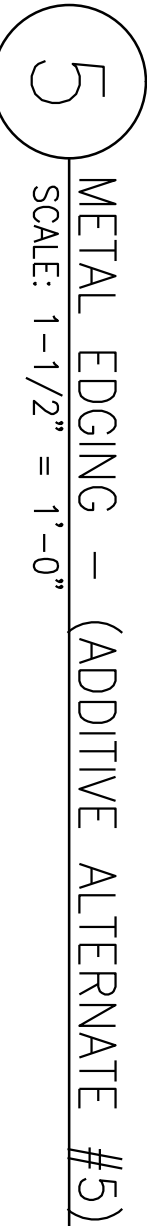
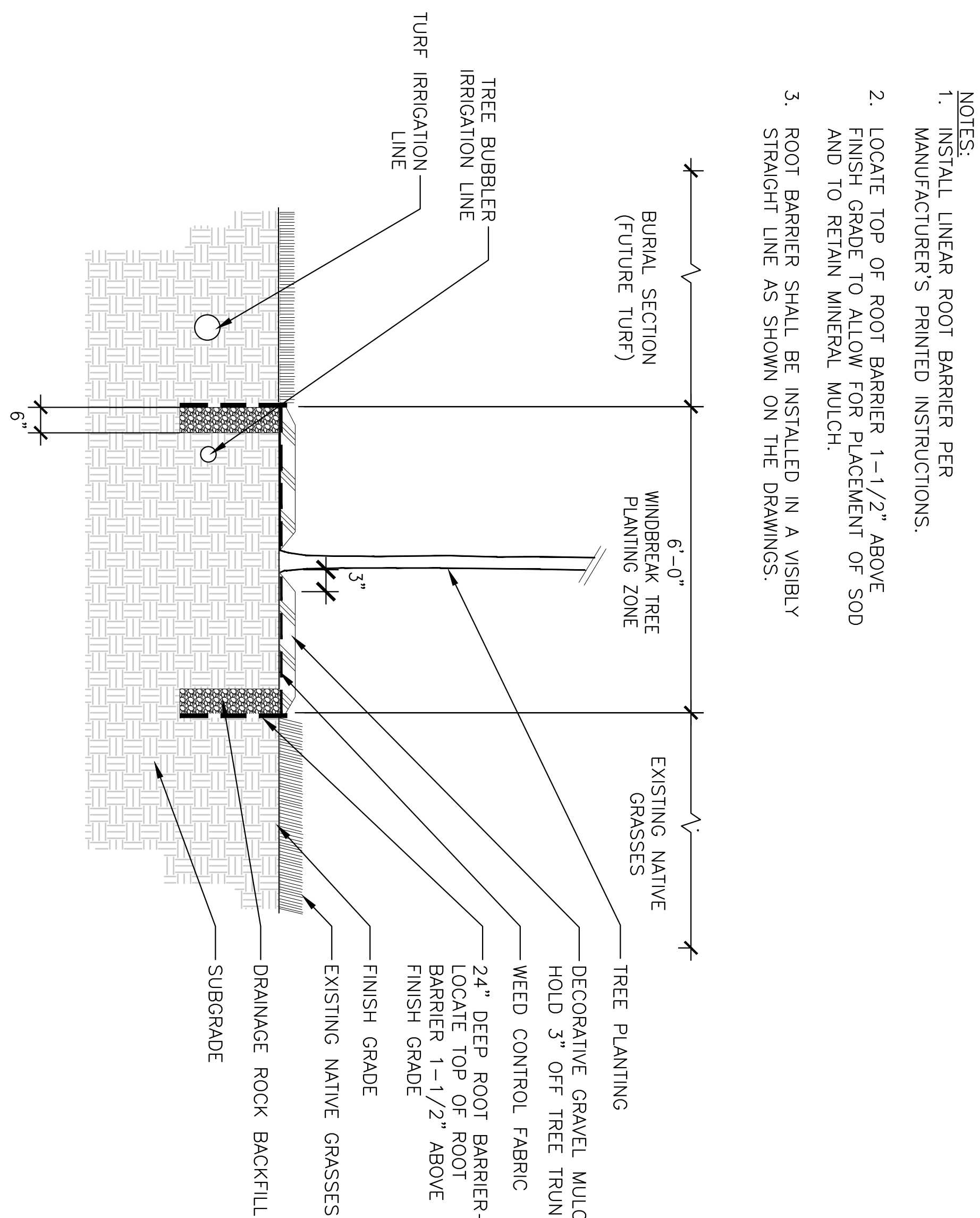
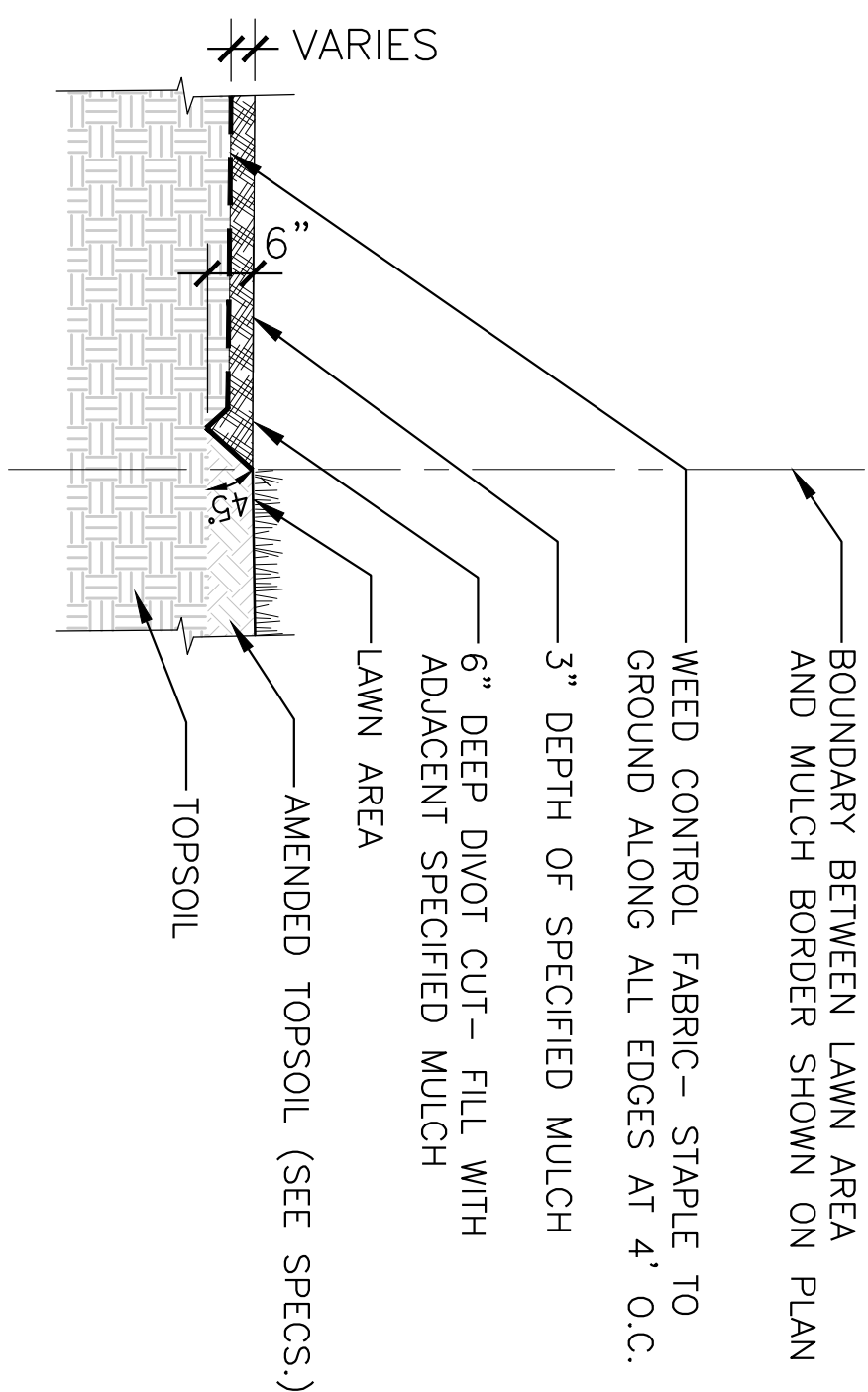
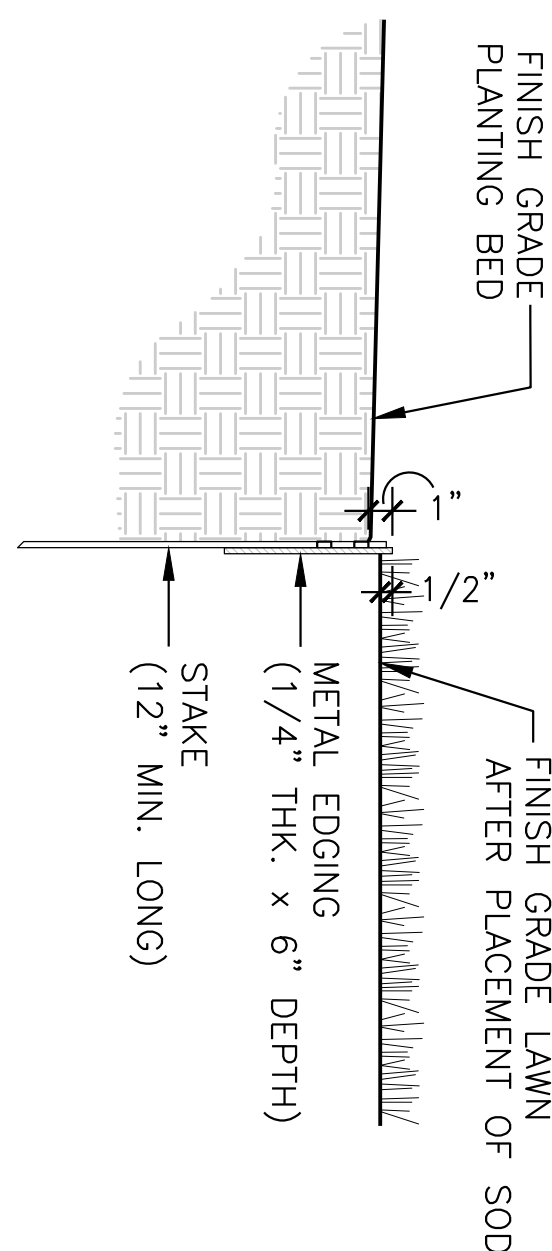
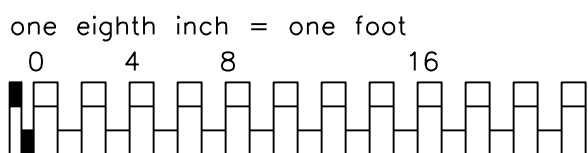
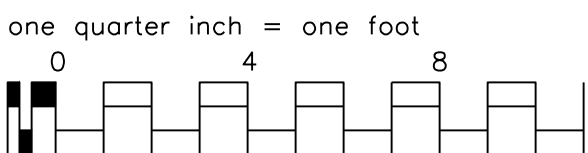
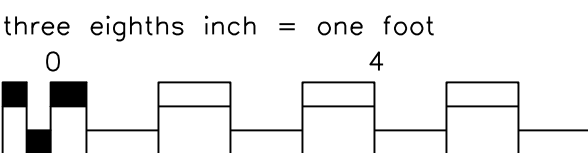
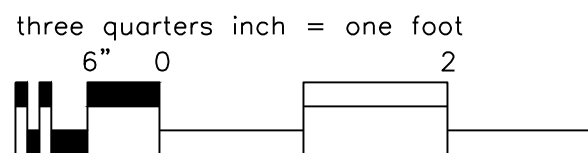
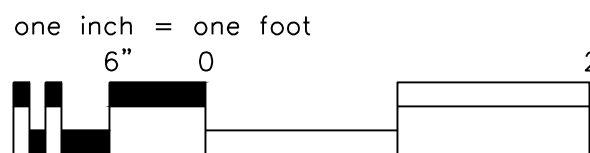
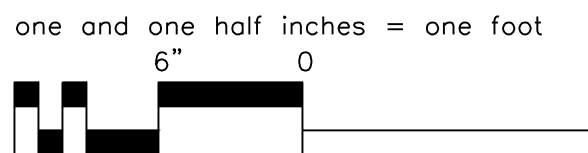
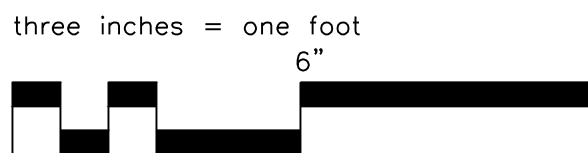


three inches = one foot

1

6"

**National
Cemetery
Administration
Pacific District**

[illegible]