

three inches = one foot

one and one half inches = one foot

one inch = one foot

three quarters inch = one foot

one half inch = one foot

three eighths inch = one foot

one quarter inch = one foot

one eighth inch = one foot

K:\CCG-PROJECTS\2016\16-121 - VA250-17-C-0008 - Design Documents\402 - Drawings\WORKING\506-331-0004.dwg 8-16-17 0:02:51 PM A:\gripch

100% FINAL BID DOCUMENTS	08-18-2017
100% BID DOCUMENTS-NOT FOR CONSTRUCTION	07-24-2017
95% CONSTRUCTION DOCUMENTS SUBMISSION	06-15-2017
65% DESIGN DEVELOPMENT SUBMISSION	04-19-2017
35% SCHEMATIC DESIGN SUBMISSION	03-06-2017
Revisions	Date

CONSULTANTS:

**WALKER**  
PARKING CONSULTANTS  
1000 Ann Arbor Drive, Suite 200  
Ann Arbor, MI 48106



**MIDWESTERN**  
CONSULTING  
3815 Plaza Drive Ann Arbor, Michigan 48108  
(734) 995-0200 • www.midwesternconsulting.com  
Land Development • Land Survey • Institutional • Municipal  
Wireless Communications • Transportation • Landfill Services

KEYPLAN

ARCHITECT + ENGINEERS:

**Bancroft**  
BANCROFT ARCHITECTS + ENGINEERS  
700 Nicholas Blvd., Suite 300  
Elk Grove Village, IL 60007  
Telephone : 847.952.9362  
www.bancroft-ae.com  
Bancroft-AE Project No. 16-121  
VA CONTRACT NO. VA250-17-C-0008

Drawing Title  
**CONSTRUCTION PHASING PLAN -  
PHASE I LEVEL E**

Approved Project Director

Project Title  
**CONSTRUCT NORTH  
PARKING STRUCTURE**

Location  
ANN ARBOR, MICHIGAN

Date  
08-18-2017

Checked  
EM

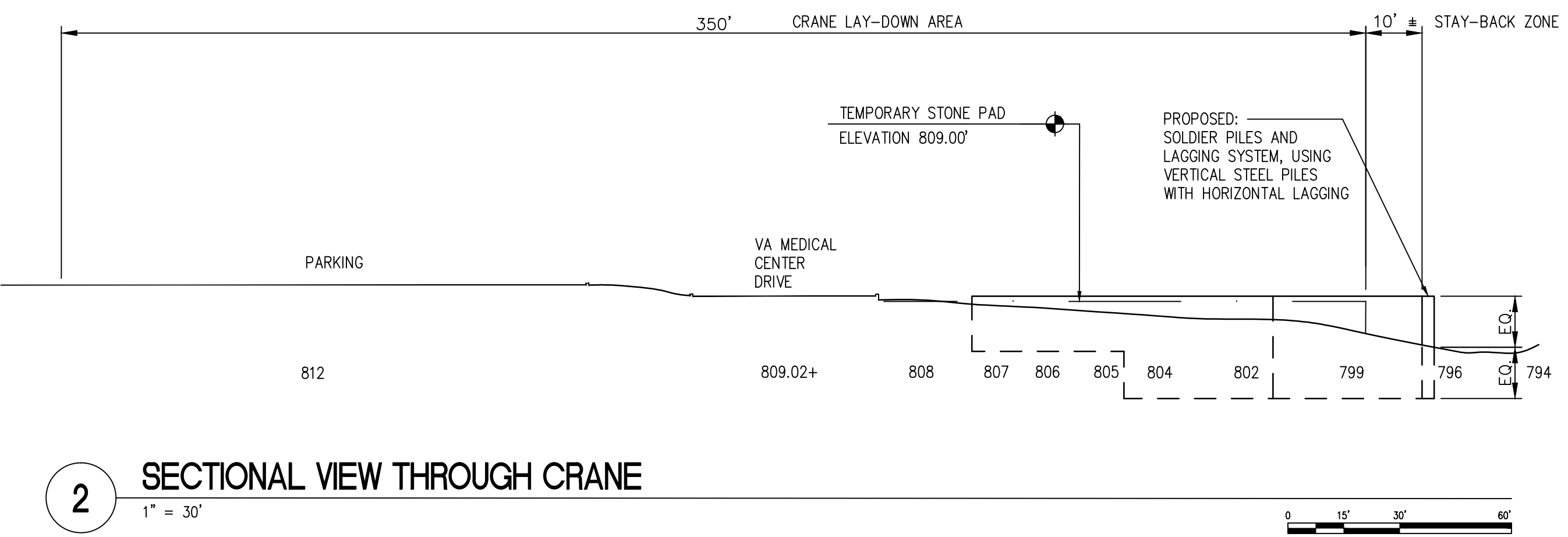
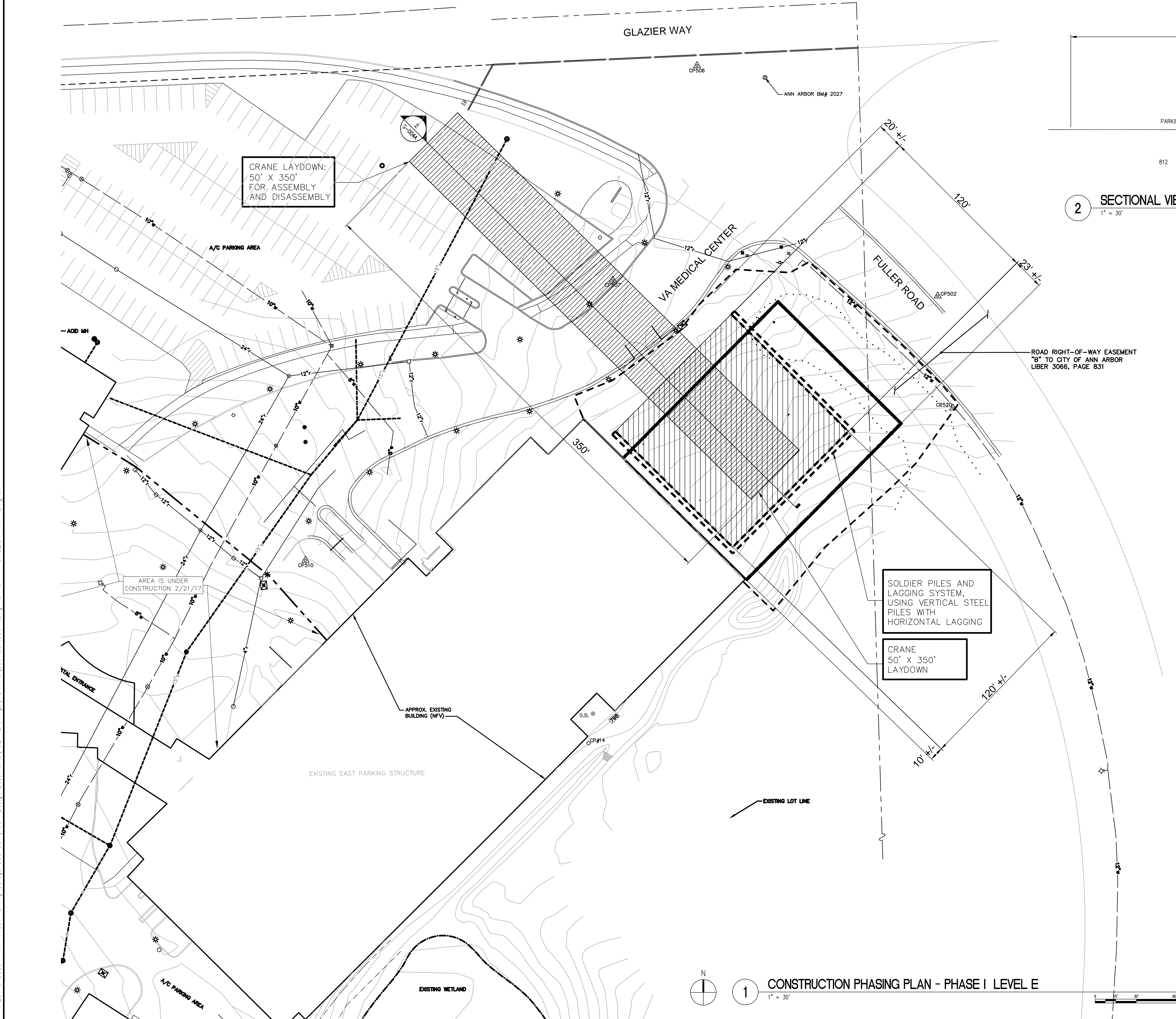
Drawn  
AG

Project Number  
506-331  
Building Number  
29

Drawing Number  
**G-004A**

Office of  
Construction  
and Facilities  
Management

Department of  
Veterans Affairs



- ### GENERAL NOTES
- PHASE 1 CONSTRUCTION ACTIVITIES ARE FOR PARKING GARAGE STRUCTURE LEVEL E.
  - VA MEDICAL CENTER MAIN DRIVE WILL REMAIN OPEN FOR PUBLIC ACCESS FROM MONDAY 12:01 AM THROUGH FRIDAY 11:59 PM.
  - VA MEDICAL CENTER MAIN DRIVE WILL BE AVAILABLE FOR CONSTRUCTION ACTIVITIES FROM SATURDAY 6:00 AM THROUGH SUNDAY 11:59 PM.
  - CONTRACTOR WILL PROVIDE WRITTEN NOTIFICATION TO THE VA FOR WEEKEND WORK TWO WEEKS PRIOR TO START DATE.
  - CONTRACTOR WILL CLEAN VA MEDICAL CENTER MAIN DRIVE OF ALL CONSTRUCTION DEBRIS AT COMPLETION OF EVERY WEEKEND WORK PHASE.
  - LEVEL E CONSTRUCTION ACTIVITIES WILL BE COMPLETED DURING WEEKEND HOURS OF OPERATIONS. NO WORK AT LEVEL E WILL BE PERMITTED DURING NORMAL BUSINESS HOURS. NORMAL BUSINESS HOURS ARE MONDAY 12:01 AM THROUGH FRIDAY 11:59 PM.
  - ACTIVITIES RELATED TO VERIFICATION OF EXISTING CONSTRUCTION ELEMENTS WILL BE COMPLETED DURING THE WEEKEND HOURS OF OPERATIONS LISTED ABOVE.

- ### PHASING PLAN NOTES
- PHASE 1 CONSTRUCTION IS ASSOCIATED WITH THE CONSTRUCTION ACTIVITIES OF THE PARKING GARAGE STRUCTURE ABOVE EXISTING LEVEL D. REFER TO ALL DRAWINGS AND SPECIFICATIONS FOR ADDITIONAL INFORMATION.
  - REFER TO CIVIL DRAWINGS FOR EXISTING GRADE ELEVATIONS.
  - REFER TO SPECIFICATIONS APPENDIX A FOR GEOTECHNICAL EVALUATION REPORT AND RELATED SOIL BORING LOG.
  - CONTRACTOR WILL BE RESPONSIBLE FOR ALL DEWATERING DURING CONSTRUCTION PHASING AND OPERATIONS.
  - CONTRACTOR WILL PROVIDE THE DESIGN, ENGINEERING AND INSTALLATION OF THE TEMPORARY CRANE PAD AND SOLDIER PILE AND LAGGER WALL SYSTEM. REFER TO SPECIFICATION SECTION 31 66 16.53 SOLDIER PILE-LAGGER WALLS FOR ADDITIONAL INFORMATION/REQUIREMENTS.
  - CONTRACTOR WILL PROVIDE TEMPORARY SOLDIER PILE AND LAGGER WALL SYSTEM.
  - CONTRACTOR WILL PROVIDE COMPACTED ENGINEERED FILL-STONE AGGREGATE AT TEMPORARY CRANE PLATFORM AREA.
  - AT COMPLETION OF ERECTION ACTIVITIES OF PARKING DECK LEVEL E CONTRACTOR WILL REMOVE TEMPORARY SOLDIER PILE AND LAGGER WALL SYSTEM AND ASSOCIATED ENGINEERED FILL-STONE AGGREGATE.
  - CONTRACTOR WILL RESTORE EXISTING LANDSCAPING AT EXISTING WEST PARKING LOT. CONTRACTOR WILL REINSTALL STREET LIGHT POLES AND FIXTURES.