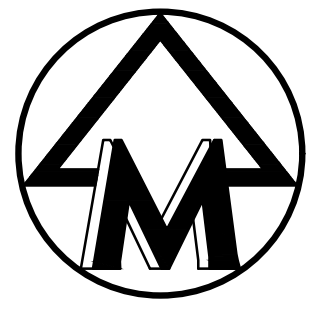
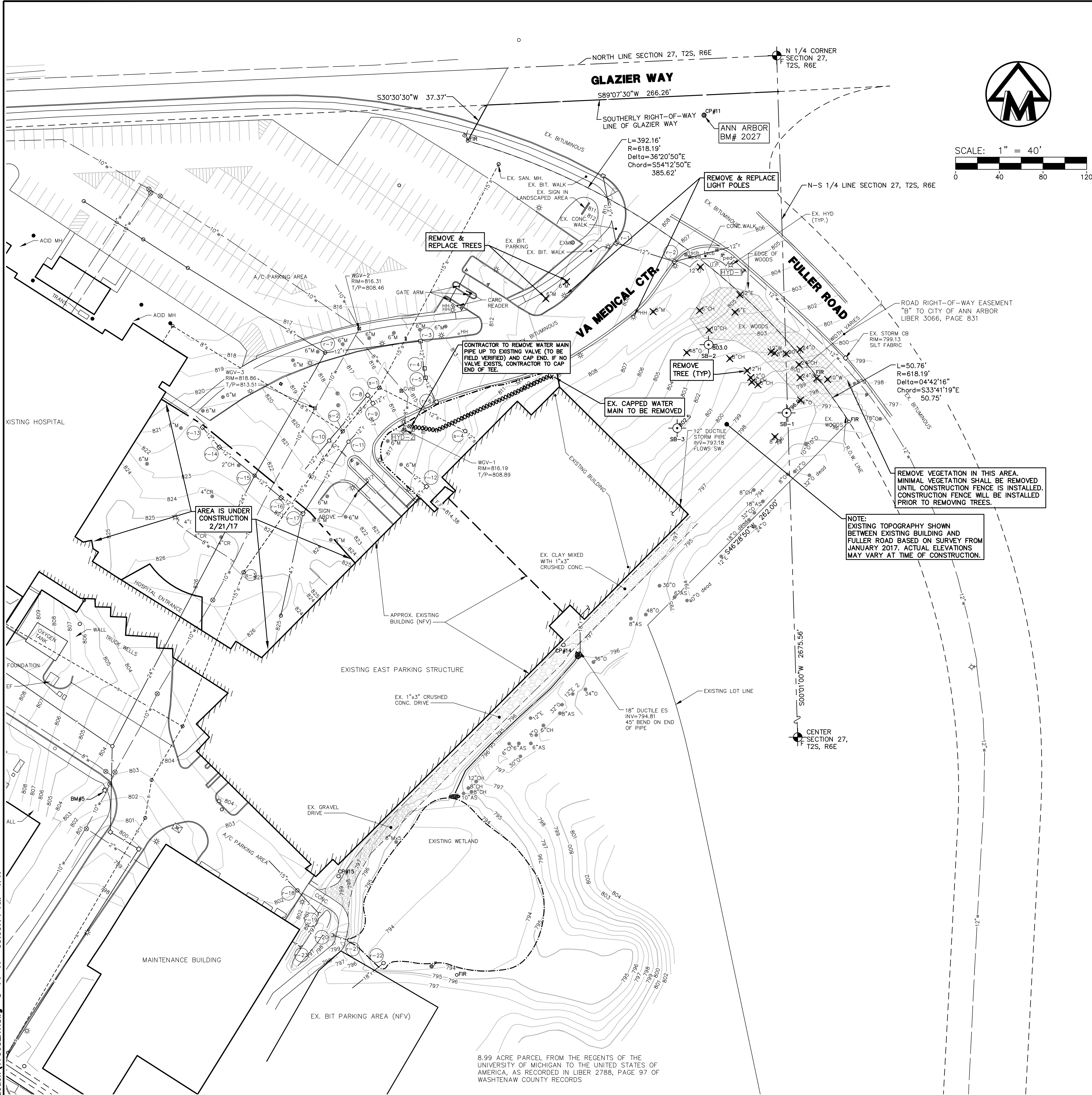
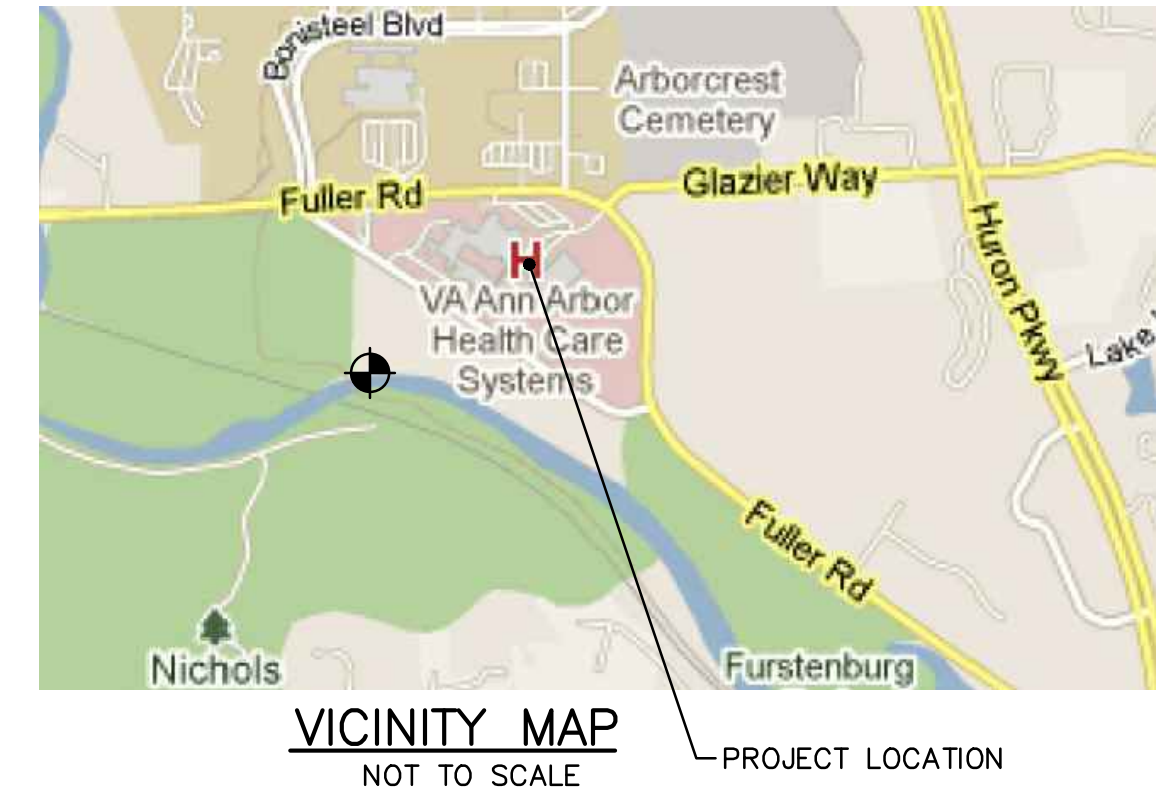


three inches = one foot
one and one half inches = one foot
one inch = one foot
three quarters inch = one foot
one half inch = one foot
three eighths inch = one foot
one quarter inch = one foot
one eighth inch = one foot
one sixteenth inch = one foot



SCALE: 1" = 40'
0 40 80 120



TREE LEGEND

- A APPLE
- AS ASH
- B BASSWOOD
- BE BEECH
- BI BIRCH
- BO BOX ELDER
- C CATALPA
- CE CEDAR
- CH CHERRY
- CO COTTONWOOD
- CR CRABAPPLE
- E ELM
- H HICKORY
- L LOCUST
- M MAPLE
- MU MULBERRY
- O OAK
- P PINE
- PO POPLAR
- S SPRUCE
- SY SYCAMORE
- W WALNUT
- WI WILLOW

LEGEND

- 838 EXIST. CONTOUR
- +836.2 EXIST. SPOT ELEVATION
- U.P. EXIST. UTILITY POLE
- GP EXIST. GUY POLE
- GUY WIRE
- OH ELEC. TRANSFORMER
- EXH EXIST. OVERHEAD UTILITY LINE
- * EXIST. LIGHT POLE
- t EXIST. TELEPHONE LINE
- e EXIST. ELECTRIC LINE
- g EXIST. GAS LINE
- f.o. EXIST. GAS VALVE
- w EXIST. FIBER OPTIC LINE
- EXH EXIST. HYDRANT
- EXH EXIST. GATE VALVE IN BOX
- EXH EXIST. GATE VALVE IN WELL
- EXH EXIST. CURB STOP & BOX
- EXH EXIST. BLOW-OFF
- r EXIST. STORM SEWER
- S EXIST. CATCH BASIN OR INLET
- EXH EXIST. BECHIVE INLET
- END SECTION
- HEAD WALL
- CULVERT
- EXIST. SANITARY SEWER
- EXIST. CLEANOUT
- C/L OF DITCH
- DRAINAGE DIRECTION
- ENCLOSED TRASH AREA
- SIGN
- RAILROAD CROSSING SIGN
- MAILBOX
- TELEPHONE RISER
- CABLE TELEVISION RISER
- ELECTRIC METER
- WATER METER
- GAS METER
- GAS LINE MARKER
- FIBER OPTIC MARKER
- POST
- WELL
- FENCE
- SINGLE TREE
- TREE OR BRUSH LIMIT
- EXIST. BOULDER
- SECTION CORNER
- SOIL BORING LOCATION
- SB-1
- SET IRON PIPE
- FOUND IRON PIPE
- SET MONUMENT
- FOUND MONUMENT
- SET P.K.
- FOUND P.K.
- SET IRON ROD
- FOUND IRON ROD
- CONTROL PT.
- NOT FIELD VERIFIED
- CONCRETE
- BITUMINOUS ASPHALT
- WOOD FRAMED HOUSE
- BRICK
- TREE TO BE REMOVED

EXISTING STORM STRUCTURE SCHEDULE

No.	TYPE	RIM	INVERTS	NOTES
r-1	CB	808.14	12" NW 801.44 12" SE 801.14	
r-2	CB	806.86	12" NW 800.19 12" NE 800.19	
r-3	CB	813.69	12" W 807.44 12" S 810.19	
r-4	CB	814.05	12" N 809.87 12" S 809.87	
r-5	CB	814.10	12" N 810.35 12" S 810.35	
r-6	INLET	813.88	12" N 810.61 12" S 811.01	
r-7	MH	817.70	24" SW 793.70 24" NW 793.70	
r-8	CB	816.86	12" SW 812.07 12" SE 810.62	
r-9	CB	816.74	12" NW 812.94 12" NE 810.74	
r-10	MH	818.46	12" NE 814.46 12" SE 814.46	HDPE PIPE
r-11	MH	818.04	12" NE 809.64 12" SE 808.69	HDPE PIPE
r-12	INLET	814.17	6" SW 812.07 12" NW 810.62	PVC PIPE
r-13	INLET	822.16	12" SE 817.46	
r-14	CB	821.66	12" SE 816.96 24" SW 816.96	
r-15	MH	823.39	24" SW 795.00 24" NE 795.00	
r-16	CB	821.74	12" NW 812.44 12" SE 812.44	
r-17	INLET	821.96	12" NW 812.46 4" SW 815.36	
r-18	CB	801.79	12" SE 797.39 12" NW 797.49	
r-19	END-SECTION	797.27	15" NW 797.27	
r-20	END-SECTION	799.07	15" SE 795.75	
r-21	END-SECTION	795.72	15" NW 795.72	
r-22	INLET	793.81	18" SW 787.71	RETENTION POND
r-23	END-SECTION	797.61	8" NW 797.61	OUTLET STRUCTURE

EXISTING SANITARY STRUCTURE SCHEDULE

No.	TYPE	RIM	INVERTS	NOTES
s-1	MH	816.32	15" SW 797.17 15" NE 797.17	
s-2	MH	818.16	15" SW 795.86 15" NE 795.86	
s-3	MH	824.73	15" SW 794.10 15" NE 794.10	
s-4	OIL/WATER SEPARATOR	813.16	12" SE 798.16 12" NW 798.06	BOTTOM 795.66

BENCHMARK:

CITY OF ANN ARBOR B.M. #2027 - TOP/BRASS DISC ON CONC. MON. LOCATED ON THE NW CORNER OF FULLER & GLAZIER WAY. ELEVATION=810.59

NOTES:

- DESCRIPTION OF PROJECT: VA ANN ARBOR HEALTHCARE SYSTEM CONSTRUCT NORTH PARKING STRUCTURE
- HORIZONTAL AND VERTICAL SURVEYS MUST BE COMPLETED BEFORE ANY PERMANENT WORK IS INSTALLED TO ENSURE PROPER ALIGNMENT AND ORIENTATION OF NEW PARKING STRUCTURE.
- THE CLOSEST REGULATED WATER FEATURE IS LOCATED APPROXIMATELY 800 FEET SOUTH OF THE PROJECT.
- PREDOMINANT LAND FEATURES ARE SHOWN ON THE DRAWINGS.
- GROUND SURFACE ELEVATIONS ARE SHOWN AS CONTOUR INTERVALS AND SPOT ELEVATIONS.
- SOILS FOR THE PROPOSED PROJECT AREA (PER USDA NRCS WEB SOIL SURVEY) ARE FOX SANDY LOAM (FoB) 2% TO 6% SLOPES AND SISSON FINE SANDY LOAM (SnB) 2% TO 6% SLOPES.
- SOIL BORINGS WERE PERFORMED IN JANUARY 2017 BY SME AND A REPORT WAS GENERATED TO SUMMARIZE THE FINDINGS. THE SOIL CONDITIONS ENCOUNTERED CONSISTED OF TOPSOIL/FILL, OVERLYING STIFF NATURAL CLAY W/ INTERBEDDED SANDS, OVERLYING DENSE NATURAL SANDS. SEE REPORT (02/06/17) FOR ADDITIONAL DETAILS.
- PHYSICAL LIMITS OF CONSTRUCTION ARE SHOWN ON DRAWING CG-101. APPROXIMATE SITE DISTURBANCE IS 1.33 ACRES.
- REFER TO DRAWING G-004 FOR CONSTRUCTION PHASING NOTES.
- SEE SPECIFICATION SECTIONS OF DIVISION 31 FOR EXCAVATION, DEWATERING AND COMPACTION.

1 EXISTING CONDITIONS + DEMOLITION PLAN

SEE SPECIFICATION SECTIONS OF DIVISION 31 FOR EXCAVATION, DEWATERING AND COMPACTION.

100% FINAL BID DOCUMENTS 08-18-2017

100% BID DOCUMENTS-NOT FOR CONSTRUCTION 07-24-2017

95% CONSTRUCTION DOCUMENTS SUBMISSION 06-15-2017

65% DESIGN DEVELOPMENT SUBMISSION 04-19-2017

35% SCHEMATIC DESIGN SUBMISSION 03-06-2017

Revisions: Date

CONSULTANTS:

WALKER CONSULTANTS

205 Auto Drive, Suite 100
Ann Arbor, MI 48106

MIDWESTERN CONSULTING

3915 Plaza Drive Ann Arbor, Michigan 48108
(734) 995-0200 • www.midwesternconsulting.com

Land Development • Land Survey • Institutional • Municipal
Wireless Communications • Transportation • Landfill Services

KEYPLAN

ARCHITECT + ENGINEERS:

BANCROFT ARCHITECTS + ENGINEERS
VA CONTRACT NO. VA250-17-C-0008

700 Nicholas Blvd., Suite 300
Bk Grove Village, IL 60007
Telephone : 847.952.9362
www.bancroft-ae.com
Bancroft-AE Project No. 16-121

Drawing Title

EXISTING CONDITIONS + DEMOLITION PLAN

Approved Project Director

Project Title

CONSTRUCT NORTH PARKING STRUCTURE

Project Number

506-331

Building Number

29

Location

ANN ARBOR, MICHIGAN

Date

08-18-2017

Checked

RCW

Drawn

TPH

Drawing Number

CD-101

Office of Construction and Facilities Management

Department of Veterans Affairs