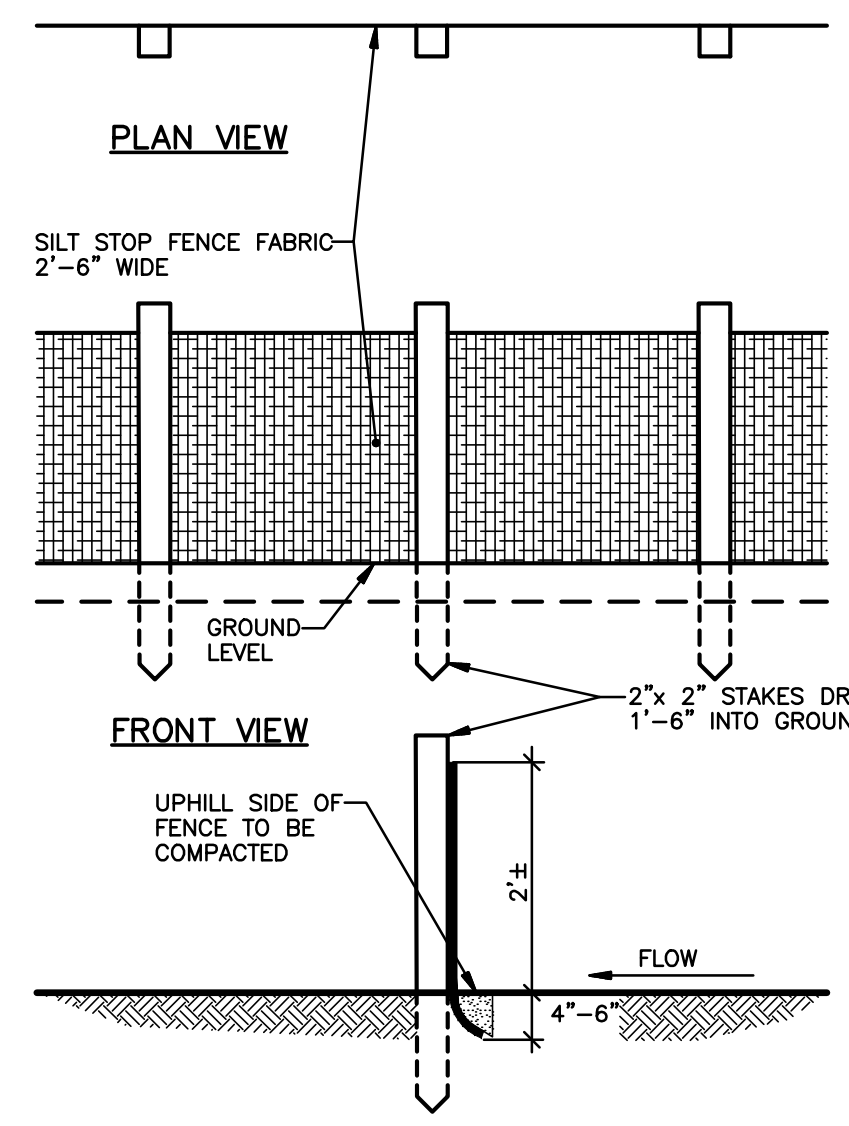
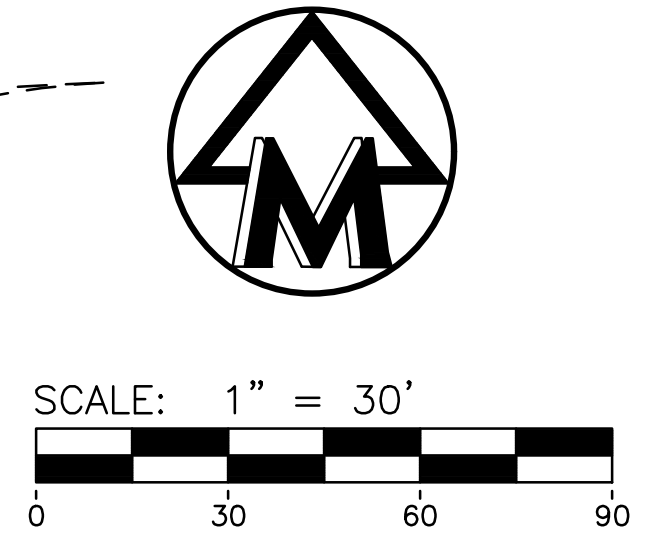
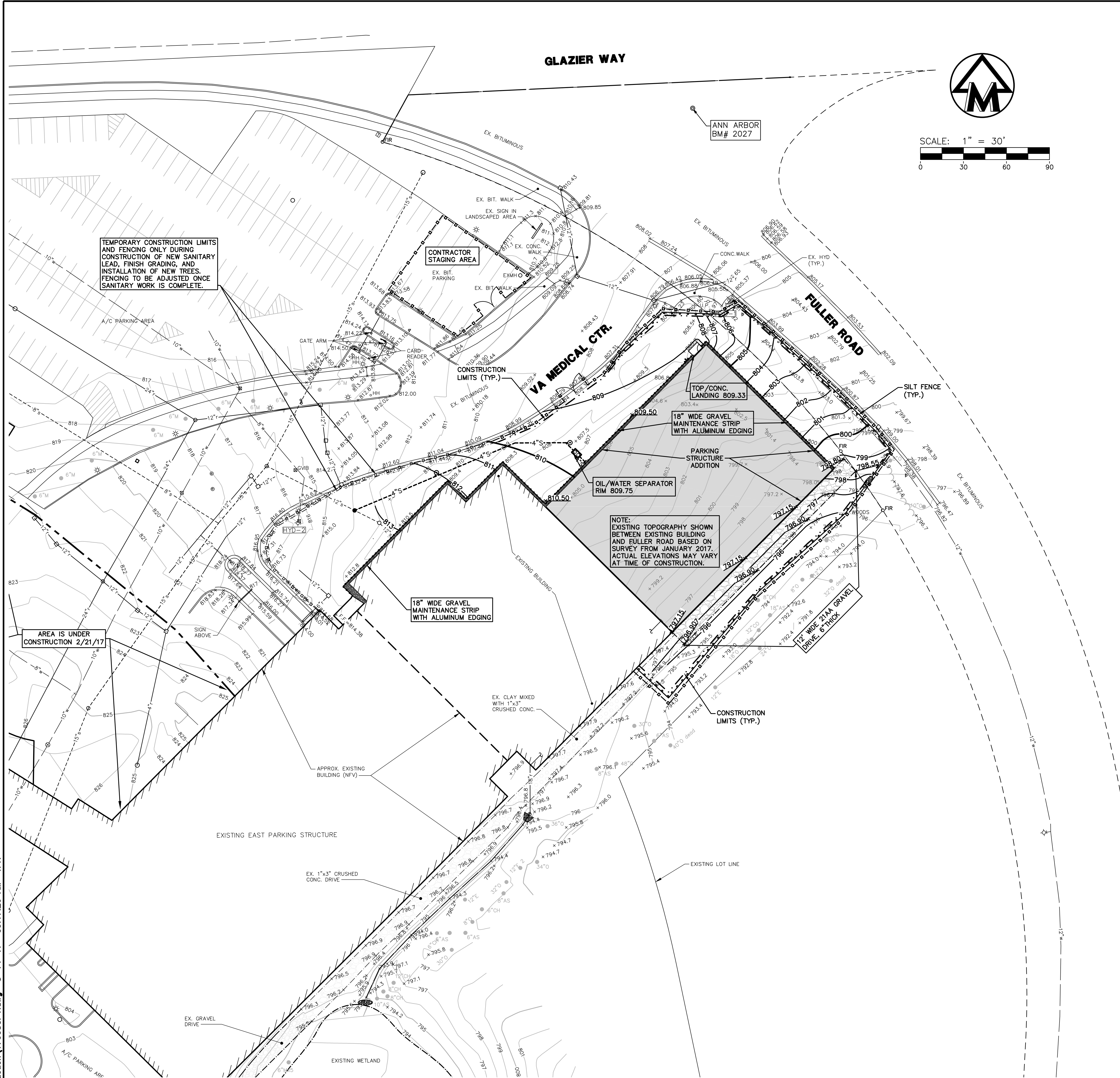


three inches = one foot  
one and one half inches = one foot  
one inch = one foot  
three quarters inch = one foot  
one half inch = one foot  
three eighths inch = one foot  
one quarter inch = one foot  
one eighth inch = one foot



TREE LEGEND

- A APPLE
- AS ASH
- B BASSWOOD
- BE BEECH
- BI BIRCH
- BO BOX ELDER
- C CATALPA
- CE CEDAR
- CH CHERRY
- CO COTTONWOOD
- CR CRABAPPLE
- E ELM
- H HICKORY
- L LOCUST
- M MAPLE
- MU MULBERRY
- O OAK
- P PINE
- PO POPLAR
- S SPRUCE
- SY SYCAMORE
- W WALNUT
- WI WILLOW

LEGEND

- 838 EXIST. CONTOUR
- 838 PROVIDE CONTOUR
- 836.2 EXIST. SPOT ELEVATION
- 36.60 PROVIDE SPOT ELEVATION
- O- U.P. EXIST. UTILITY POLE
- GP EXIST. GUY POLE
- EX GUY WIRE
- OH ELEC. TRANSFORMER
- OH EXIST. OVERHEAD UTILITY LINE
- EX EXIST. LIGHT POLE
- t EXIST. TELEPHONE LINE
- e EXIST. ELECTRIC LINE
- g EXIST. GAS LINE
- g EXIST. GAS VALVE
- f.o. EXIST. FIBER OPTIC LINE
- w EXIST. WATER MAIN
- W PROVIDE WATER MAIN
- EX EXIST. HYDRANT
- EX EXIST. GATE VALVE IN BOX
- EX EXIST. GATE VALVE IN WELL
- EX EXIST. GATE VALVE IN WELL
- EX EXIST. CURB STOP & BOX
- EX EXIST. BLOW-OFF
- EX EXIST. BLOW-OFF
- EX EXIST. STORM SEWER
- EX EXIST. CATCH BASIN OR INLET
- EX EXIST. CATCH BASIN OR INLET
- EX END SECTION
- EX HEAD WALL
- EX CULVERT
- EX EXIST. SANITARY SEWER
- EX EXIST. SANITARY SEWER
- EX EXIST. CLEANOUT
- EX EXIST. CLEANOUT
- EX C/L OF DITCH
- EX DRAINAGE DIRECTION
- EX ENCLOSED TRASH AREA
- EX SIGN
- EX TELEPHONE RISER
- EX CABLE TELEVISION RISER
- EX ELECTRIC METER
- EX WATER METER
- EX GAS METER
- EX GAS LINE MARKER
- EX FIBER OPTIC MARKER
- EX PEDESTRIAN CROSSING SIGNAL
- EX TRAFFIC SIGNAL CONTROL BOX
- EX POST
- EX FENCE
- EX SINGLE TREE
- EX TREE OR BRUSH LIMIT
- EX SECTION CORNER
- EX SOIL BORING LOCATION
- EX SET IRON PIPE
- EX FOUND IRON PIPE
- EX FOUND MONUMENT
- EX FOUND P.K.
- EX SET IRON ROD
- EX FOUND IRON ROD
- EX CONTROL PT.
- EX SILTFENCE
- EX LIMITS OF CONSTRUCTION
- EX LIMITS OF STAGING
- EX CONSTRUCTION FENCE
- EX FINISH FLOOR ELEVATION

NOTES:

1. CONTRACTOR TO OBTAIN GRADING, SOIL EROSION CONTROL, AND R.O.W. PERMITS PRIOR TO START OF CONSTRUCTION.
2. REFER TO DRAWING G-004 FOR CONSTRUCTION PHASING NOTES.
3. HORIZONTAL AND VERTICAL SURVEYS MUST BE COMPLETED BEFORE ANY PERMANENT WORK IS INSTALLED TO ENSURE PROPER ALIGNMENT AND ORIENTATION OF NEW PARKING STRUCTURE.
4. SEE SPECIFICATION SECTIONS OF DIVISION 31 FOR EXCAVATION, DEWATERING AND COMPACTION.
5. WHERE THE COMPLETION OF WORK IN THIS CONTRACT MAKES NECESSARY THE PERFORMANCE OF ALL OR ANY PART OF THE CONTRACT WORK UNDER WINTER CONDITIONS, THEN, EXCEPTING AS SPECIFICALLY OTHERWISE PROVIDED IN THE CONTRACT, THE CONTRACTOR SHALL DO ALL THINGS NECESSARY FOR THE PERFORMANCE AND PROTECTION OF SUCH WINTER WORK WITHOUT ADDITIONAL COMPENSATION OR CLAIM THEREFOR.

1 GRADING PLAN

\*SEE SPECIFICATION SECTIONS OF DIVISION 31 FOR EXCAVATION, DEWATERING AND COMPACTION.\*

100% FINAL BID DOCUMENTS	08-18-2017
100% BID DOCUMENTS-NOT FOR CONSTRUCTION	07-24-2017
95% CONSTRUCTION DOCUMENTS SUBMISSION	06-15-2017
65% DESIGN DEVELOPMENT SUBMISSION	04-19-2017
35% SCHEMATIC DESIGN SUBMISSION	03-06-2017
Revisions:	Date

CONSULTANTS:

WALKER PARKING CONSULTANTS

MIDWESTERN CONSULTING

KEYPLAN

ARCHITECT + ENGINEERS:

BANCROFT ARCHITECTS + ENGINEERS

700 Nicholas Blvd., Suite 300  
Bk. Grove Village, IL 60007  
Telephone : 847.952.9362  
www.bancroft-ae.com  
Bancroft-AE Project No. 16-121

Drawing Title  
GRADING PLAN

Approved Project Director

Project Title  
CONSTRUCT NORTH PARKING STRUCTURE

Location  
ANN ARBOR, MICHIGAN

Date  
08-18-2017

Checked  
RCW

Drawn  
TPH

Project Number  
506-331

Building Number  
29

Drawing Number  
CG-101

Office of Construction and Facilities Management

Department of Veterans Affairs