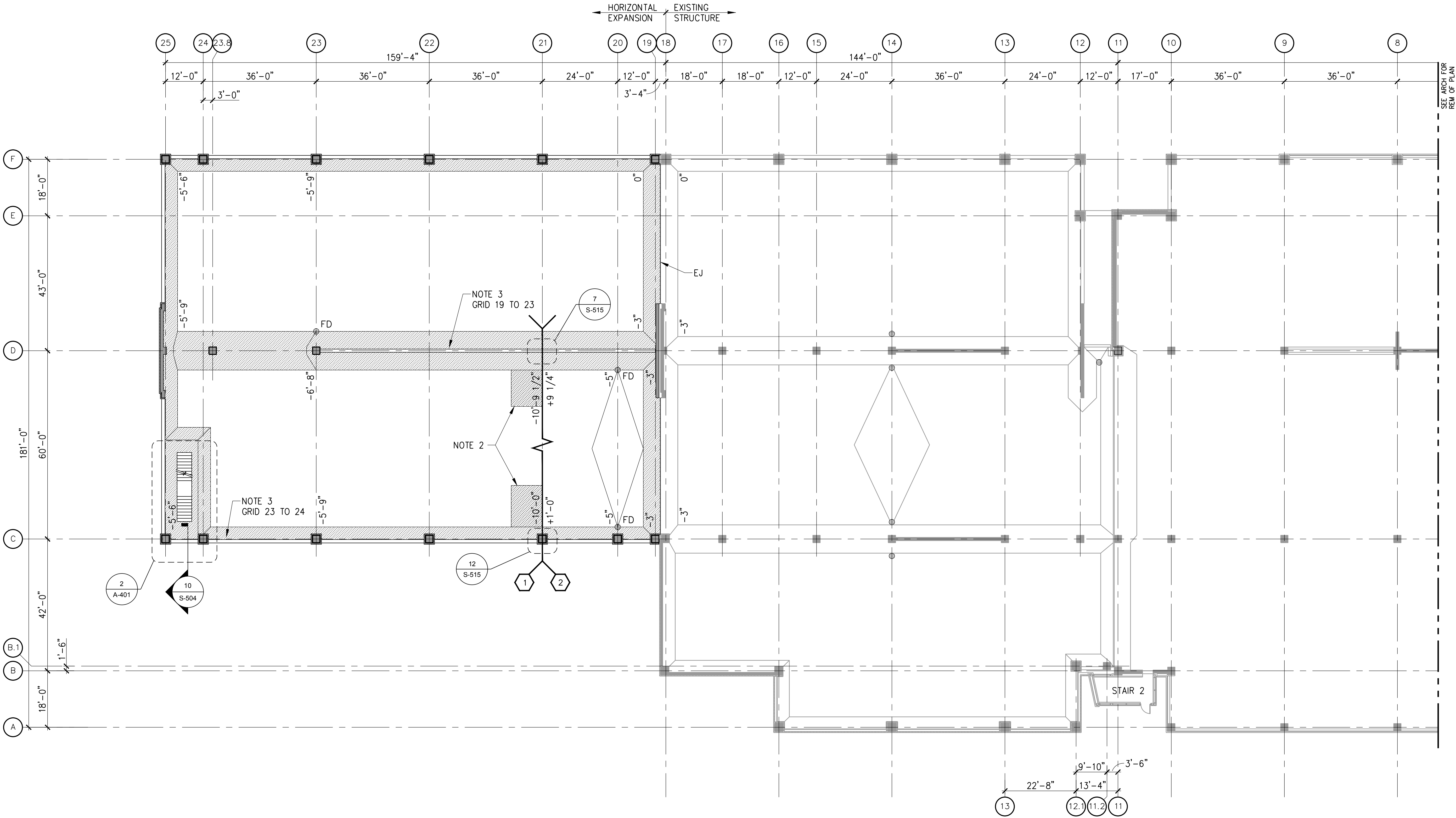
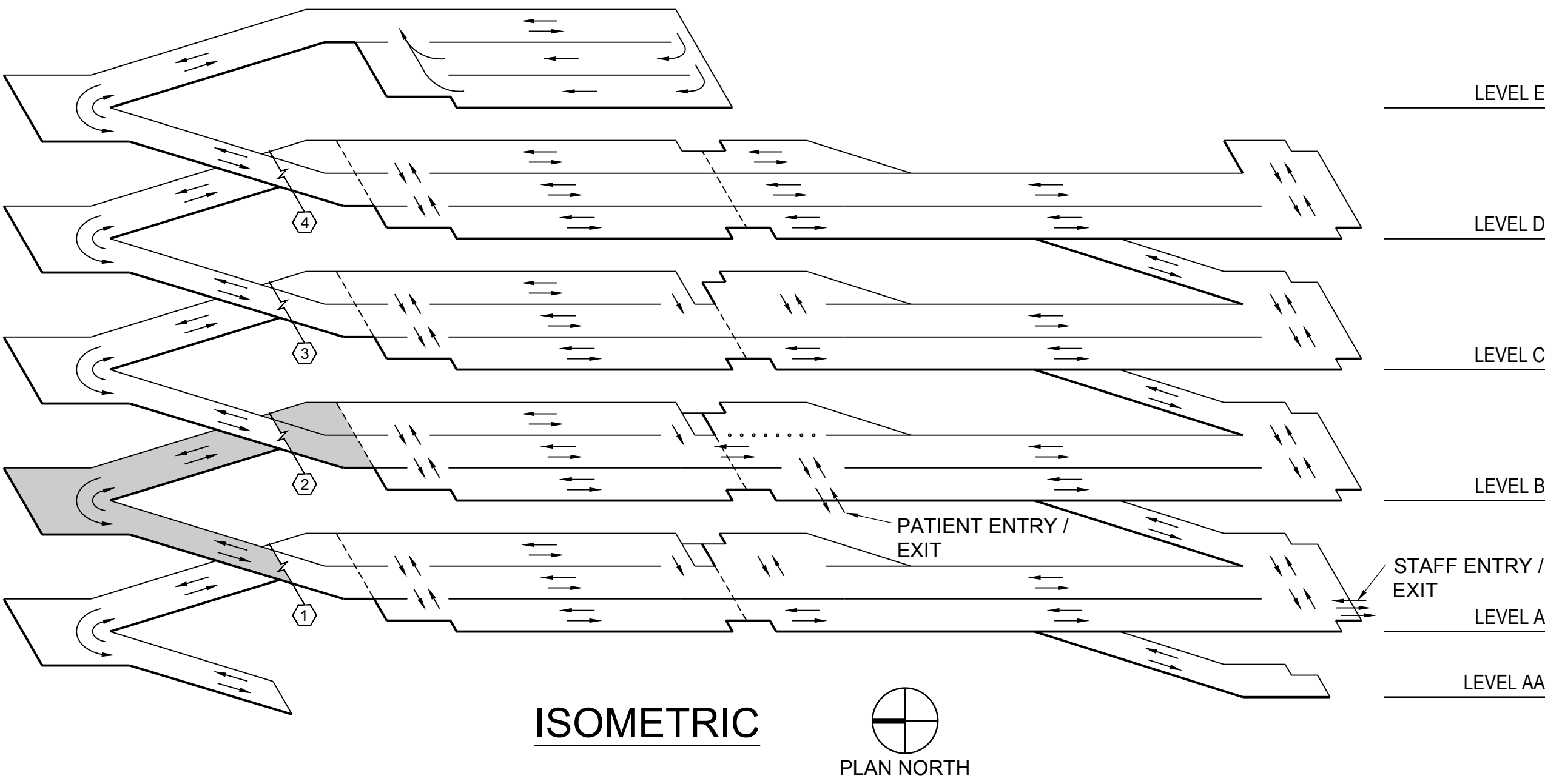


DRAWING NOTES:

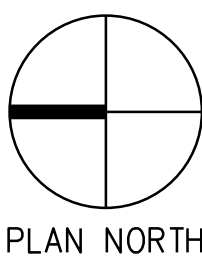
- SEE DRAWING S-103 FOR TYPICAL DRAWING NOTES AND LOCATIONS OF TYPICAL DETAIL REFERENCES (UNLESS NOTED).
- PROVIDE TRAFFIC COATING OVER ROOMS BELOW. EXTEND FROM EXPANSION JOINT AT GRID 21 AND 1'-0" PAST EXTERIOR FACE OF WALLS BELOW. SEE NOTE 9 ON S-103 FOR ADDITIONAL INFORMATION.
- PROVIDE EXTENDED DAP IN TEE STEMS AT UNDERSIDE OF LEVEL B FOR HORIZONTAL FIRE PIPING. COORDINATE WITH FIRE PROTECTION DRAWINGS.



IT SHALL BE THE CONTRACTOR'S RESPONSIBILITY TO VERIFY THAT THERE IS A MINIMUM OF 8'-2" HEADROOM BETWEEN ALL DRIVING SURFACES AND OVERHEAD BEAMS PRIOR TO PLACING CONCRETE.

1 LEVEL B PLAN  
0 8' 16' 32'  
1/16" = 1'-0"

ELEVATIONS ARE NOTED (+/-) WITH RESPECT TO BASE ELEVATION OF 814'-10" AT LEVEL B.



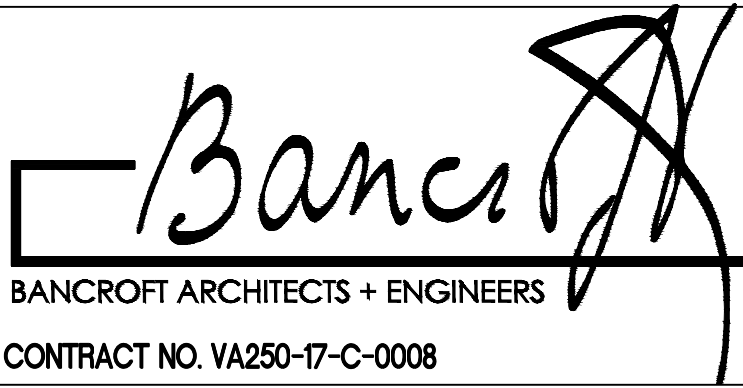
100% FINAL BID DOCUMENTS	06-18-2017
100% BID DOCUMENTS-NOT FOR CONSTRUCTION	07-24-2017
95% CONSTRUCTION DOCUMENTS SUBMISSION	06-15-2017
65% DESIGN DEVELOPMENT SUBMISSION	04-19-2017
35% SCHEMATIC DESIGN SUBMISSION	03-06-2017
Revisions:	Date



MIDWESTERN CONSULTING  
3815 Plaza Drive, Ann Arbor, Michigan 48106  
(734) 995-0200 • www.midwesternconsulting.com  
Land Development • Land Survey • Institutional • Municipal  
Wireless Communications • Transportation • Landfill Services

KEYPLAN

ARCHITECT + ENGINEERS:



700 Nicholas Blvd., Suite 300  
Bk Grove Village, IL 60007  
Telephone : 847.952.9362  
www.bancroft-ae.com  
Bancroft-AE Project No. 16-121

Drawing Title  
LEVEL B PLAN

Approved Project Director

Project Title  
CONSTRUCT NORTH  
PARKING STRUCTURE

Location  
ANN ARBOR, MICHIGAN

Date  
08-18-2017

Checked  
JBM

Drawn  
KJW

Project Number  
506-331

Building Number  
29

Drawing Number  
S-102

Office of  
Construction  
and Facilities  
Management

