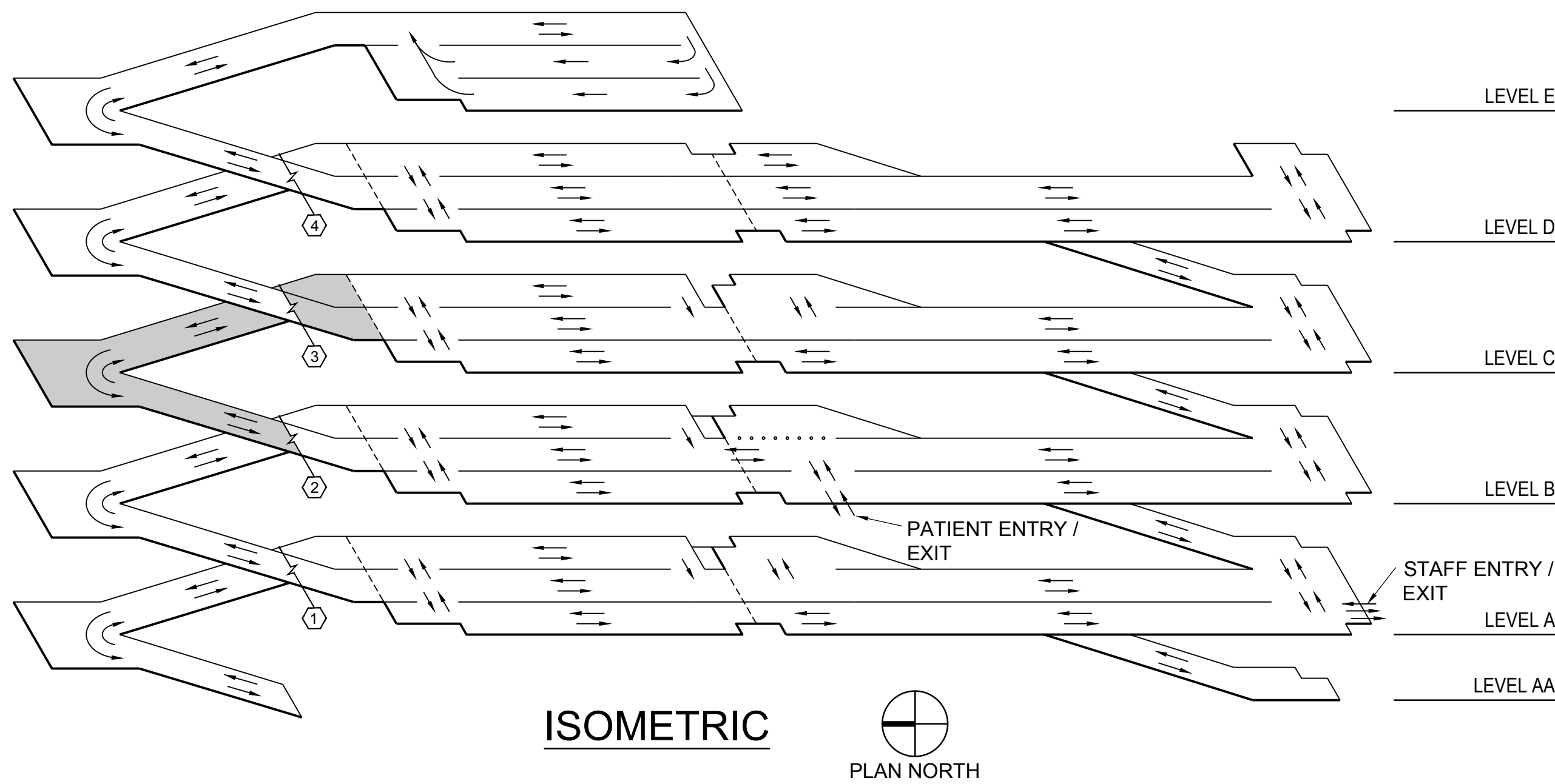
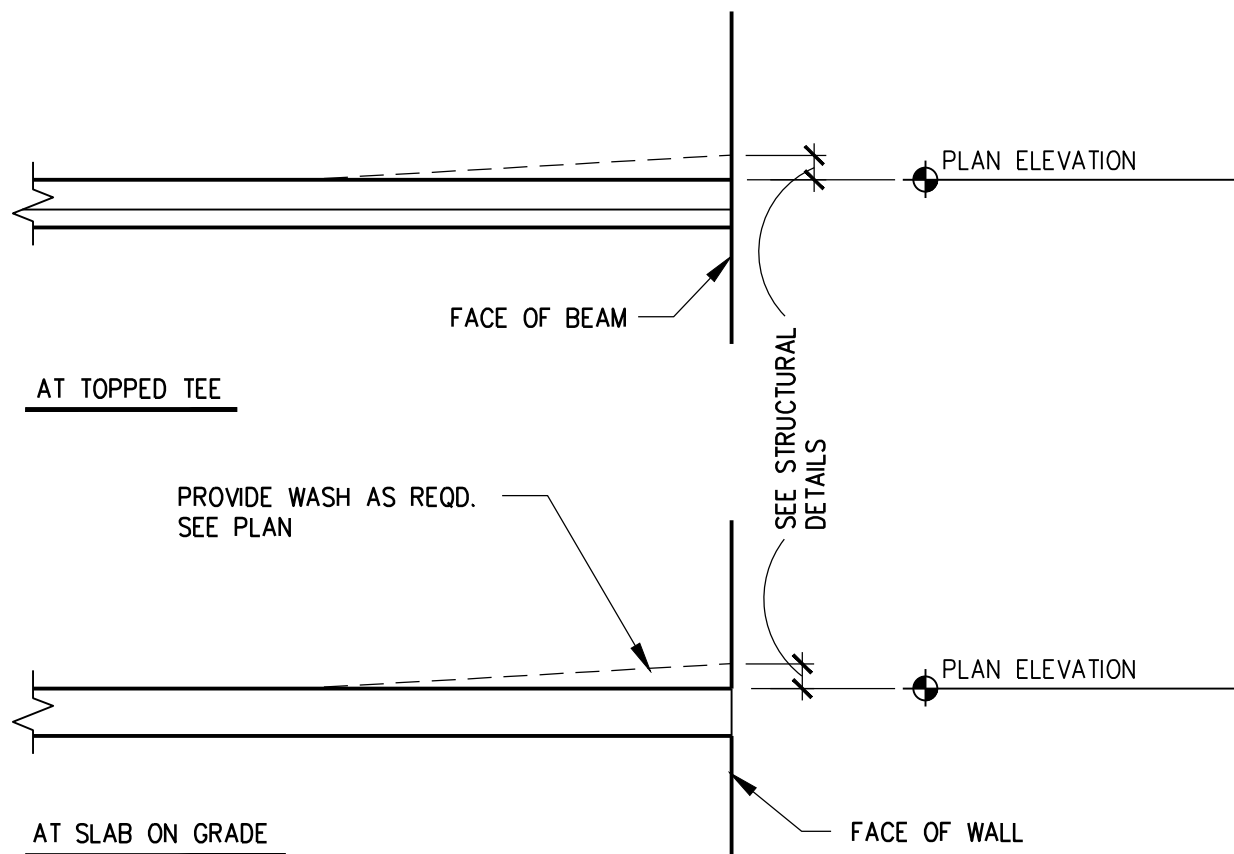
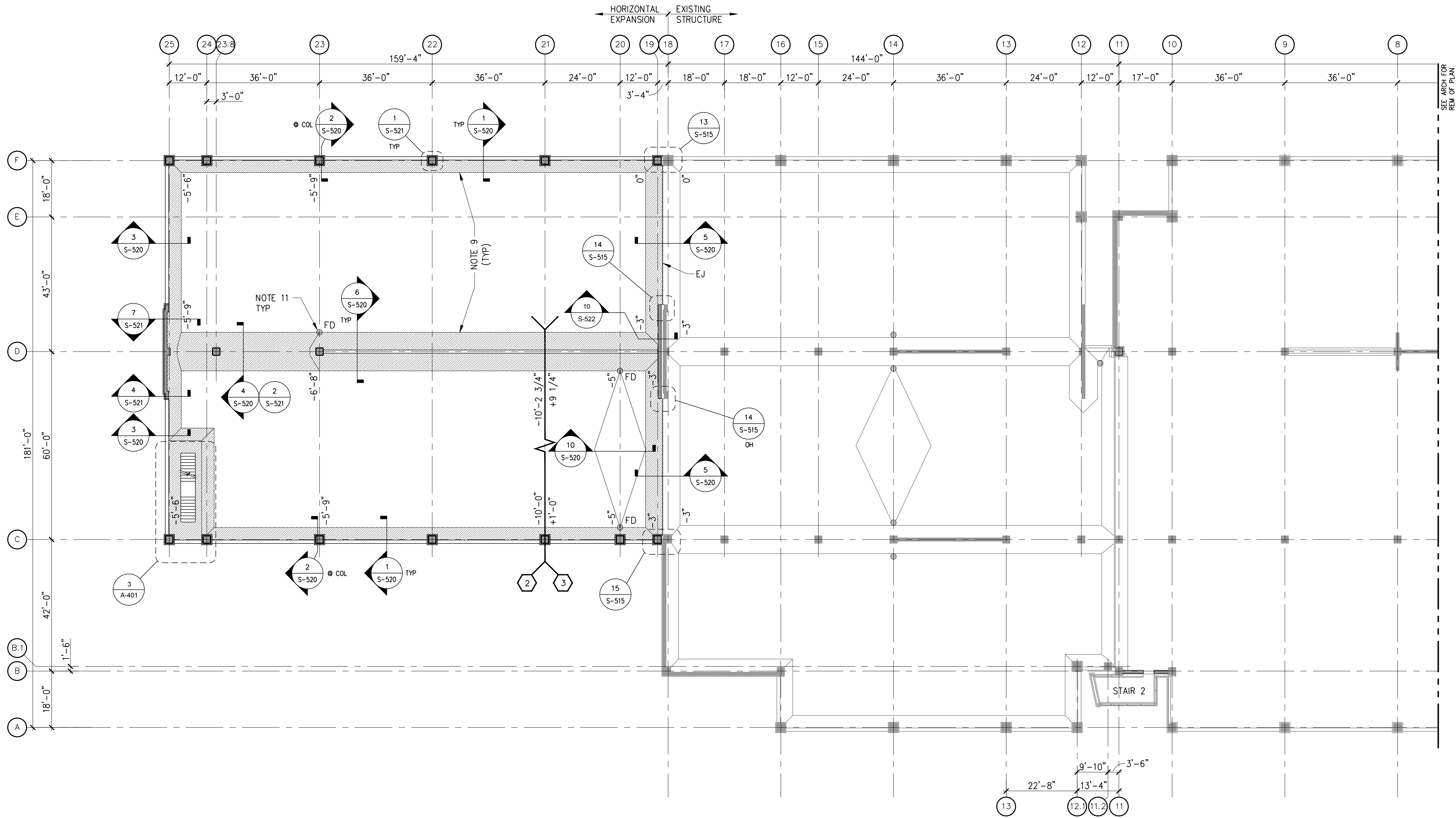


three eighths inch = one foot
one eighth inch = one foot
one quarter inch = one foot
three quarters inch = one foot
one half inch = one foot
one inch = one foot
one and one half inches = one foot
two inches = one foot
three inches = one foot
four inches = one foot
five inches = one foot
six inches = one foot
seven inches = one foot
eight inches = one foot
nine inches = one foot
ten inches = one foot
eleven inches = one foot
twelve inches = one foot
thirteen inches = one foot
fourteen inches = one foot
fifteen inches = one foot
sixteen inches = one foot
seventeen inches = one foot
eighteen inches = one foot
nineteen inches = one foot
twenty inches = one foot
twenty one inches = one foot
twenty two inches = one foot
twenty three inches = one foot
twenty four inches = one foot
twenty five inches = one foot
twenty six inches = one foot
twenty seven inches = one foot
twenty eight inches = one foot
twenty nine inches = one foot
thirty inches = one foot
thirty one inches = one foot
thirty two inches = one foot
thirty three inches = one foot
thirty four inches = one foot
thirty five inches = one foot
thirty six inches = one foot
thirty seven inches = one foot
thirty eight inches = one foot
thirty nine inches = one foot
forty inches = one foot
forty one inches = one foot
forty two inches = one foot
forty three inches = one foot
forty four inches = one foot
forty five inches = one foot
forty six inches = one foot
forty seven inches = one foot
forty eight inches = one foot
forty nine inches = one foot
fifty inches = one foot
fifty one inches = one foot
fifty two inches = one foot
fifty three inches = one foot
fifty four inches = one foot
fifty five inches = one foot
fifty six inches = one foot
fifty seven inches = one foot
fifty eight inches = one foot
fifty nine inches = one foot
sixty inches = one foot
sixty one inches = one foot
sixty two inches = one foot
sixty three inches = one foot
sixty four inches = one foot
sixty five inches = one foot
sixty six inches = one foot
sixty seven inches = one foot
sixty eight inches = one foot
sixty nine inches = one foot
seventy inches = one foot
seventy one inches = one foot
seventy two inches = one foot
seventy three inches = one foot
seventy four inches = one foot
seventy five inches = one foot
seventy six inches = one foot
seventy seven inches = one foot
seventy eight inches = one foot
seventy nine inches = one foot
eighty inches = one foot
eighty one inches = one foot
eighty two inches = one foot
eighty three inches = one foot
eighty four inches = one foot
eighty five inches = one foot
eighty six inches = one foot
eighty seven inches = one foot
eighty eight inches = one foot
eighty nine inches = one foot
ninety inches = one foot
ninety one inches = one foot
ninety two inches = one foot
ninety three inches = one foot
ninety four inches = one foot
ninety five inches = one foot
ninety six inches = one foot
ninety seven inches = one foot
ninety eight inches = one foot
ninety nine inches = one foot
one hundred inches = one foot



- DRAWING NOTES:**
- REFERENCES:
 - GENERAL NOTES S-001
 - FLOOR DRAIN LOCATIONS & DETAILS PLUMBING DRAWINGS
 - DETAIL CUTS & INFORMATION SHOWN ON THIS DRAWING APPLY TO ALL SUPPORTED LEVELS UNLESS NOTED OTHERWISE.
 - USE STRAIGHT LINE INTERPOLATION FOR FLOOR ELEVATIONS BETWEEN THOSE INDICATED. SEE 2/S-103 FOR PLAN ELEVATION KEY.
 - FOR LIGHTWALL DETAILS AND NOTES SEE DRAWING S-220.
 - FOR SHEARWALL DETAILS AND NOTES SEE DRAWING S-210.
 - FOR TYPICAL COLUMN & BEAM DETAILS & NOTES SEE DRAWING S-510.
 - FOR TYPICAL TEE DETAILS & NOTES SEE DRAWING S-515.
 - TYPICAL BAY LAYOUT IS BASED ON 12'-0" WIDE TEES.
 - TRAFFIC COATING OVER ALL CIP POURSTRIPS & WASHERS. CONCRETE FINISH AT TRAFFIC COATING AREAS SHALL BE AS REQ'D BY TRAFFIC COATING INSTALLER. SEE 8/S-515 FOR DETAIL AT VERTICAL SURFACES.
 - REFER TO 1/S-521 & 2/S-521 FOR TYPICAL SEALANT REQUIREMENTS AT PRECAST CONCRETE JOINTS.
 - SEE DETAIL 9/S-515 FOR FLOOR DRAIN INSTALLATION DETAIL.

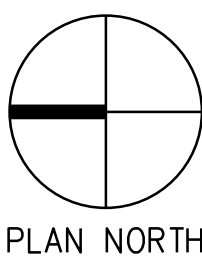






2 PLAN ELEVATION KEY
NOT TO SCALE

IT SHALL BE THE CONTRACTOR'S RESPONSIBILITY TO VERIFY THAT THERE IS A MINIMUM OF 8'-2" HEADROOM BETWEEN ALL DRIVING SURFACES AND OVERHEAD BEAMS PRIOR TO PLACING CONCRETE.

1 LEVEL C PLAN
0 8' 16' 32'
1/16" = 1'-0"

ELEVATIONS ARE NOTED (+/-) WITH RESPECT TO BASE ELEVATION OF 825'-10" AT LEVEL C.



		CONSULTANTS:		KEYPLAN		ARCHITECT + ENGINEERS:		Drawing Title LEVEL C PLAN		Project Title CONSTRUCT NORTH PARKING STRUCTURE		Project Number 506-331		Office of Construction and Facilities Management	
		  <div>M I D W E S T E R N C O N S U L T I N G</div> <div>3815 Plaza Drive Ann Arbor, Michigan 48108 (734) 995-0200 • www.midwesternconsulting.com Land Development • Land Survey • Institutional • Municipal Wireless Communications • Transportation • Landfill Services</div>				 <div>BANCROFT ARCHITECTS + ENGINEERS VA CONTRACT NO. VA250-17-C-0008</div>						Building Number 29			
100% FINAL BID DOCUMENTS 100% BID DOCUMENTS-NOT FOR CONSTRUCTION 95% CONSTRUCTION DOCUMENTS SUBMISSION 65% DESIGN DEVELOPMENT SUBMISSION 35% SCHEMATIC DESIGN SUBMISSION Revisions:		06-18-2017 07-24-2017 06-15-2017 04-19-2017 03-06-2017 Date						Approved: Project Director		Location ANN ARBOR, MICHIGAN		Drawing Number S-103			
								700 Nicholas Blvd., Suite 300 Elk Grove Village, IL 60007 Telephone: 847-523-0362 www.bancroft-ae.com Bancroft-AE Project No. 16-121		Date 08-18-2017		Checked JBM		Drawn KJW	
														 Department of Veterans Affairs	