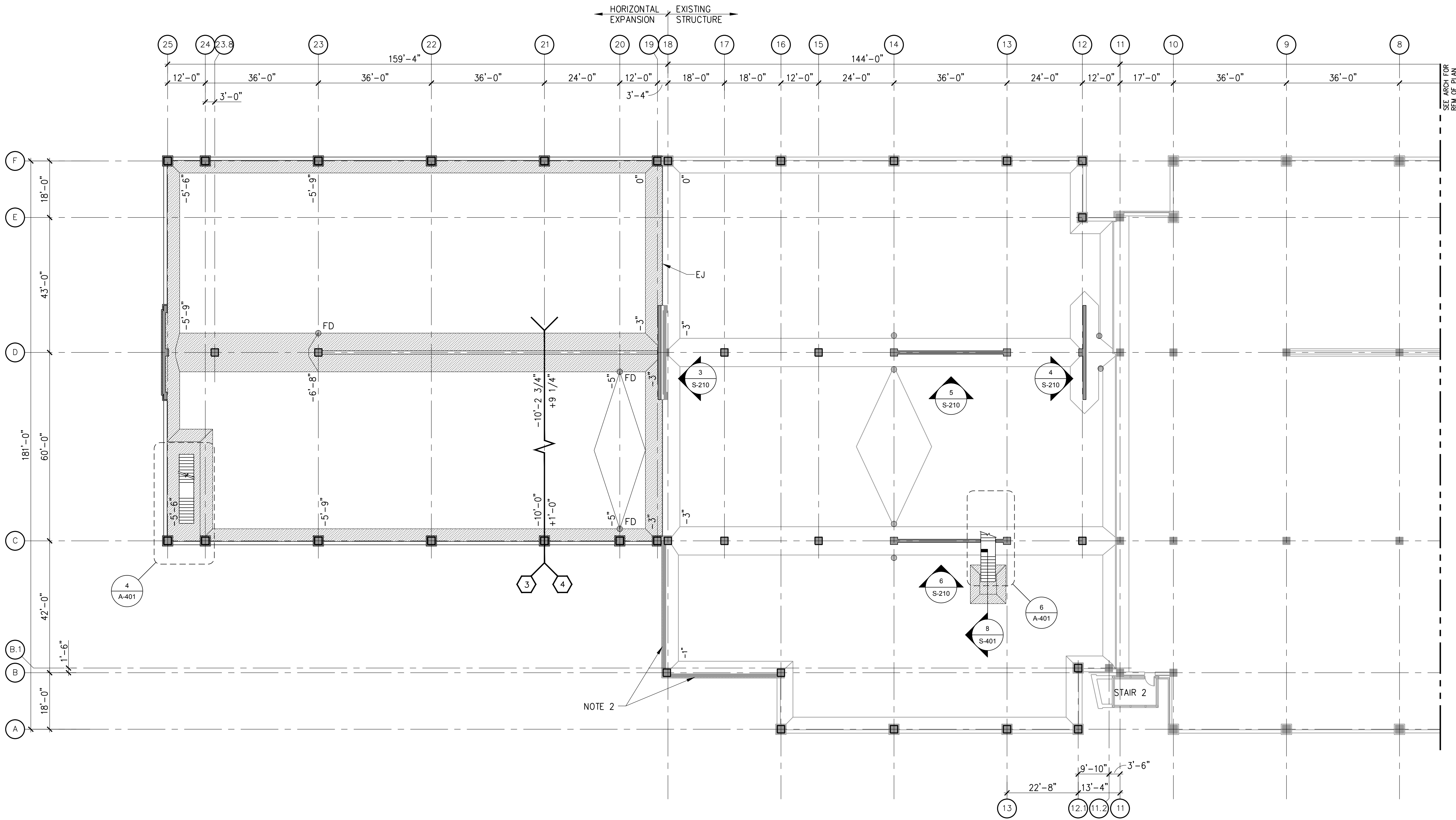
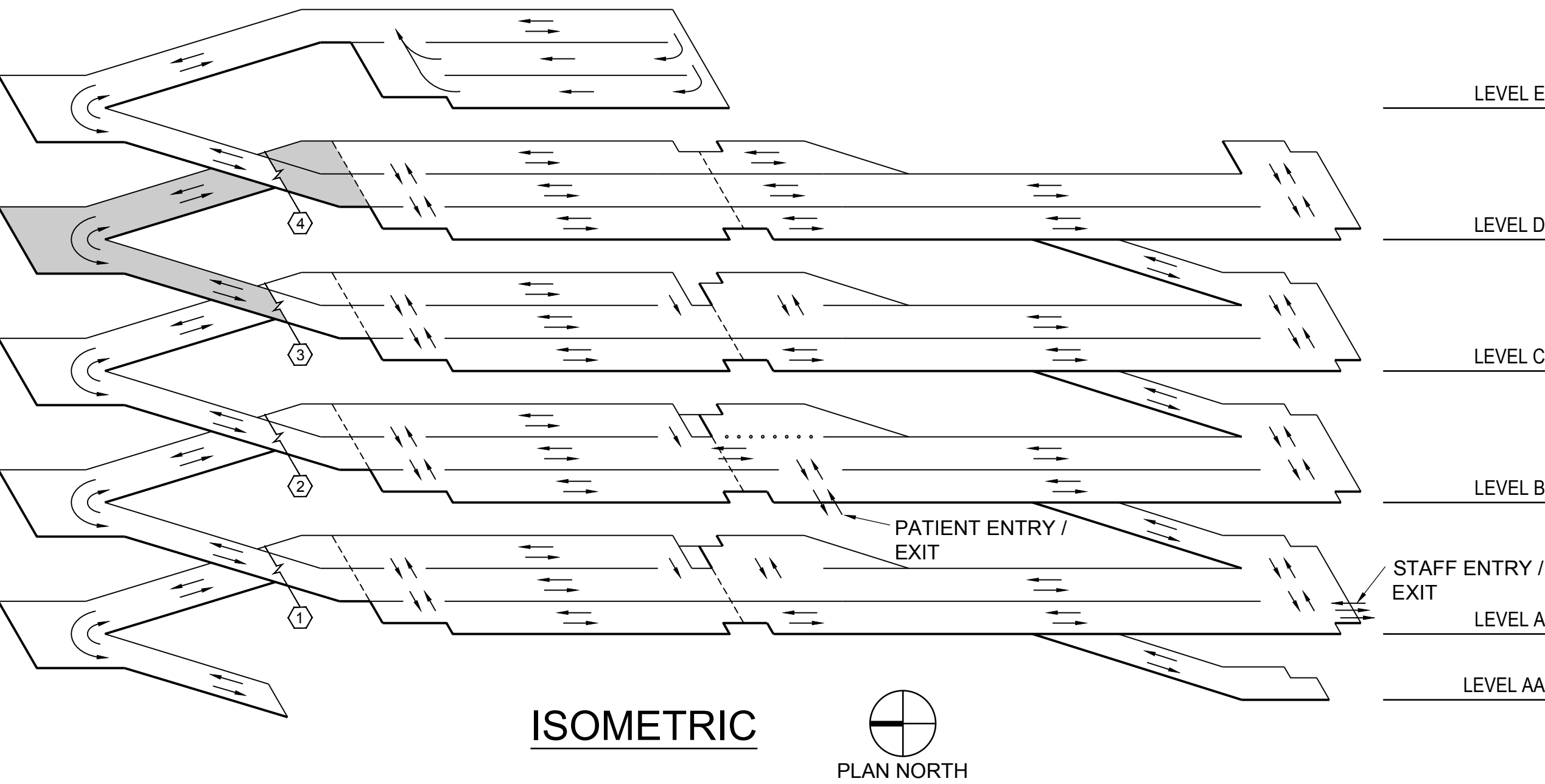
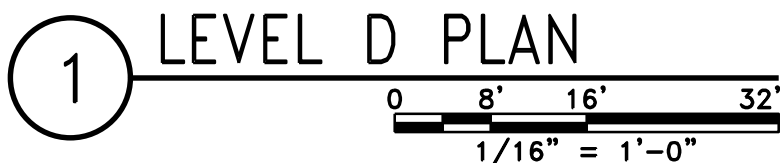


DRAWING NOTES:

- SEE DRAWING S-103 FOR TYPICAL DRAWING NOTES AND LOCATIONS OF TYPICAL DETAIL REFERENCES (UNLESS NOTED).
- DRILL AND ANCHOR #4 x 2'-10" DOWELS @ 16" OC IN TOP OF EXISTING P/C PANELS FOR 8" CMU WALL. ANCHOR 10" MIN W/ HILTI HIT HY200 OR APPROVED EQUIVALENT.



IT SHALL BE THE CONTRACTOR'S RESPONSIBILITY TO VERIFY THAT THERE IS A MINIMUM OF 8'-2" HEADROOM BETWEEN ALL DRIVING SURFACES AND OVERHEAD BEAMS PRIOR TO PLACING CONCRETE.



ELEVATIONS ARE NOTED (+/-) WITH RESPECT TO BASE ELEVATION OF 836'-10" AT LEVEL D.



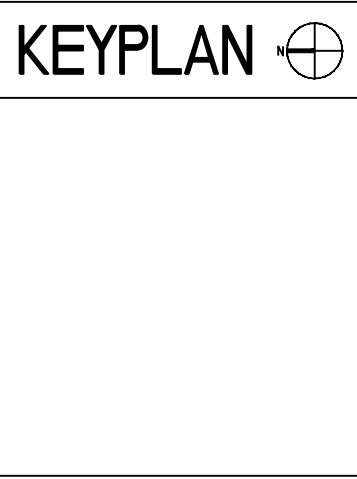
100% FINAL BID DOCUMENTS	08-18-2017
100% BID DOCUMENTS-NOT FOR CONSTRUCTION	07-24-2017
95% CONSTRUCTION DOCUMENTS SUBMISSION	06-15-2017
65% DESIGN DEVELOPMENT SUBMISSION	04-19-2017
35% SCHEMATIC DESIGN SUBMISSION	03-06-2017
Revisions:	Date

CONSULTANTS:

WALKER PARKING CONSULTANTS

MIDWESTERN CONSULTING

3815 Plaza Drive, Ann Arbor, Michigan 48106
(734) 995-0200 • www.midwesternconsulting.com
Land Development • Land Survey • Institutional • Municipal
Wireless Communications • Transportation • Landfill Services



ARCHITECT + ENGINEERS:

Bancroft

BANCROFT ARCHITECTS + ENGINEERS

VA CONTRACT NO. VA250-17-C-0008

700 Nicholas Blvd., Suite 300
Bk. Grove Village, IL 60007
Telephone: 847.952.9362
www.bancroft-ae.com
Bancroft-AE Project No. 16-121

Drawing Title	LEVEL D PLAN
Approved Project Director	

Project Title	CONSTRUCT NORTH PARKING STRUCTURE
Location	ANN ARBOR, MICHIGAN
Date	08-18-2017
Checked	JBM
Drawn	KJW

Project Number	506-331
Building Number	29
Drawing Number	S-104

Office of Construction and Facilities Management

Department of Veterans Affairs