

three inches = one foot
one and one half inches = one foot
one inch = one foot
three quarters inch = one foot
one half inch = one foot
three eighths inch = one foot
one quarter inch = one foot
one eighth inch = one foot
one sixteenth inch = one foot

A

B

C

D

E

F

G

A

B

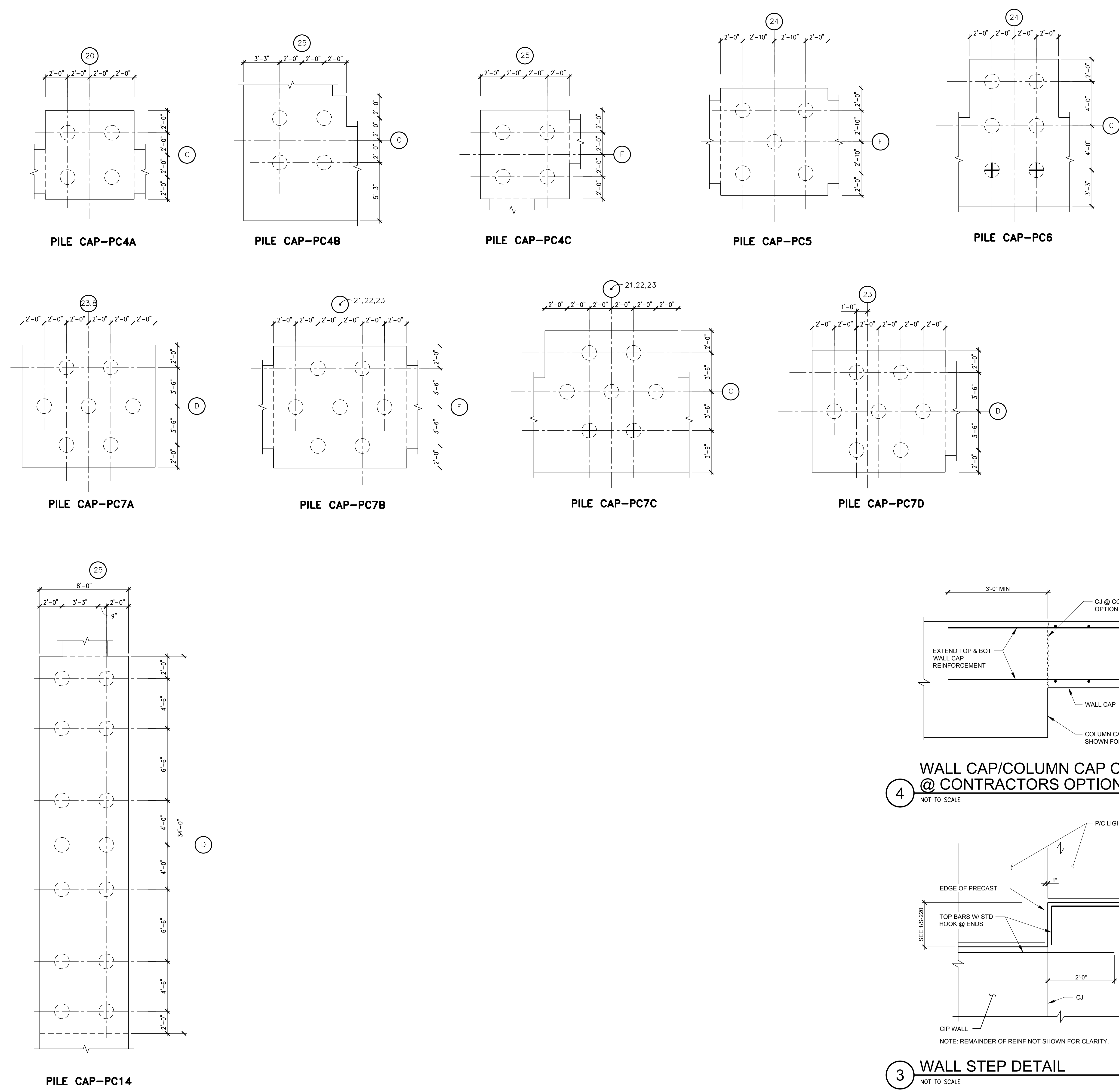
C

D

E

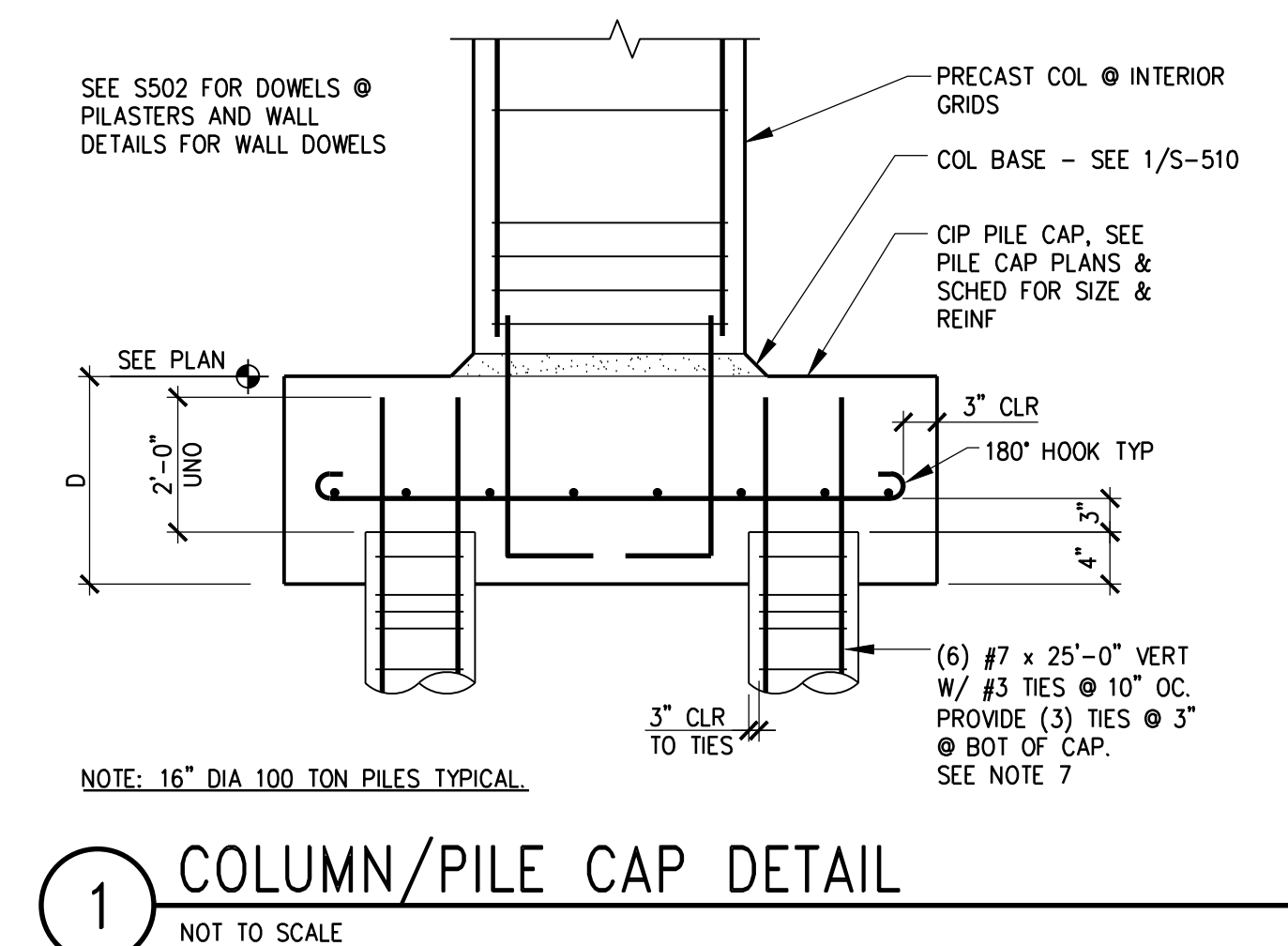
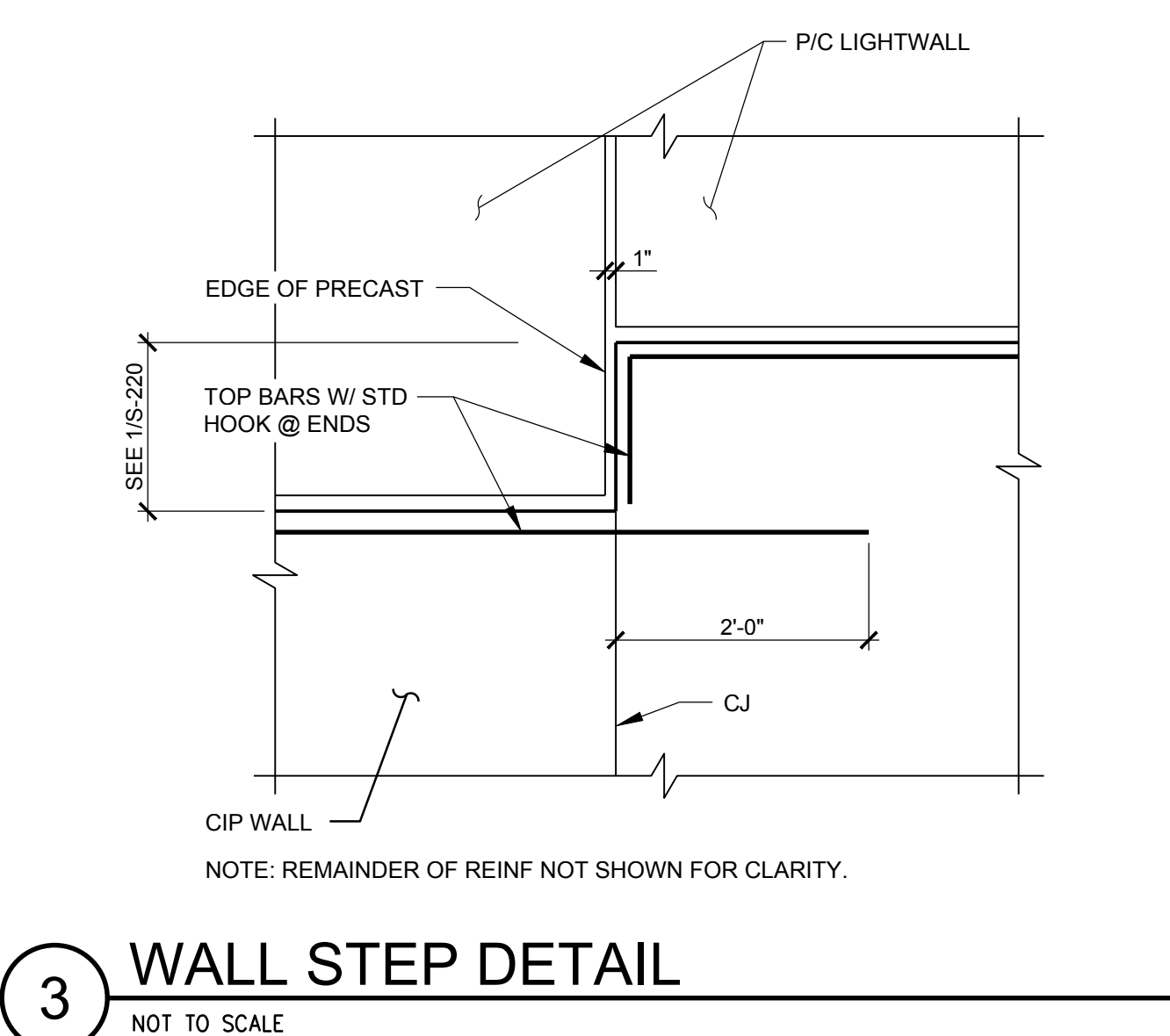
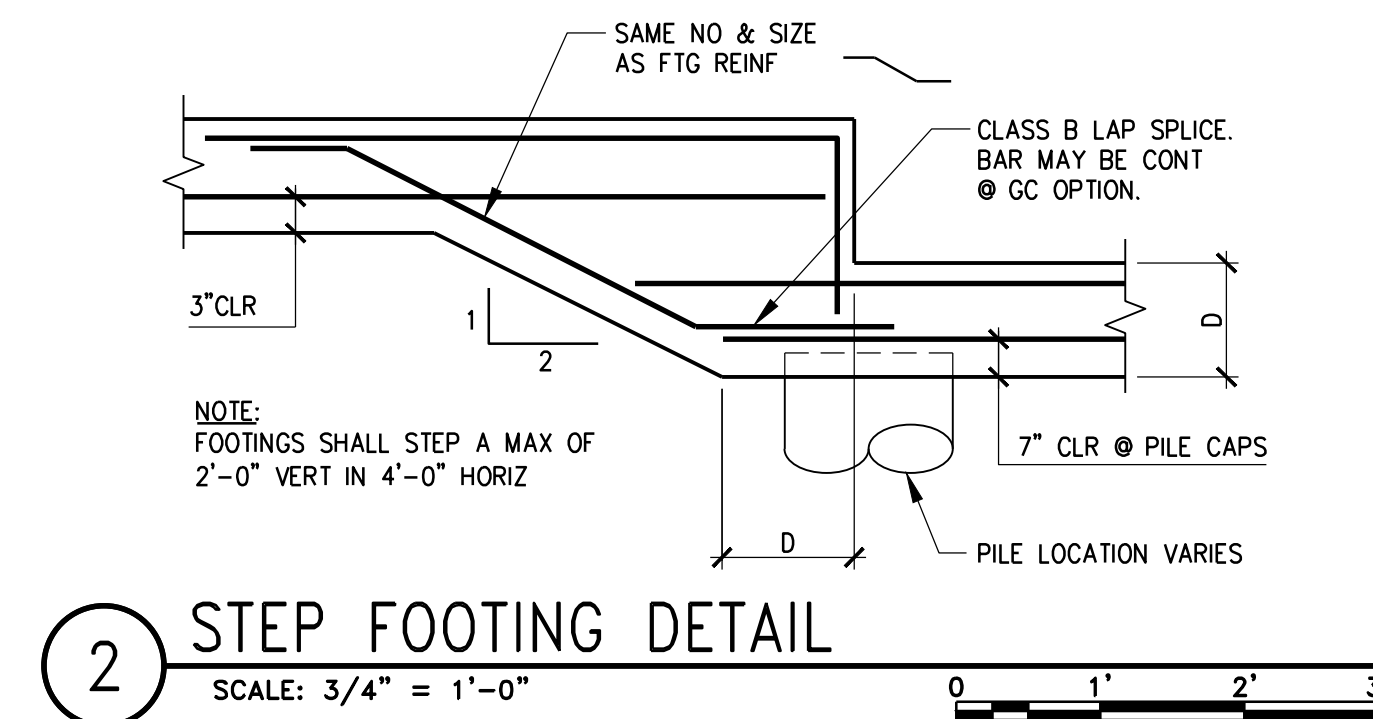
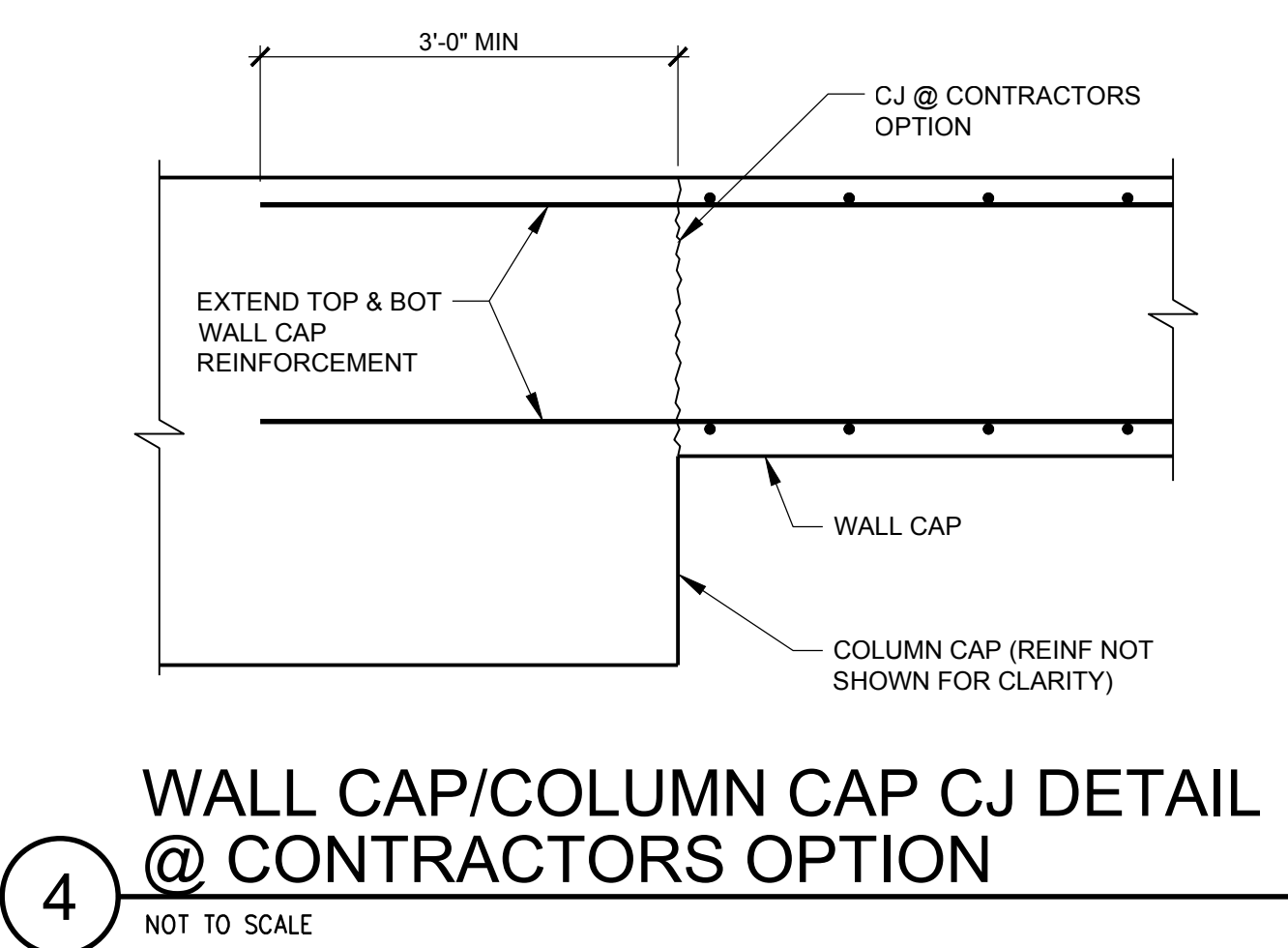
F

G



PILE CAP SCHEDULE (SEE PILE CAPS & 1/S-501)			
MARK	DEPTH D	CAP REINF	REMARKS
PC4A	50"	#9 @ 8" EW BOT #6 @ 12" EW TOP	
PC4B	50"	#9 @ 8" EW BOT #6 @ 12" EW TOP	
PC4C	40"	#9 @ 8" EW BOT #6 @ 12" EW TOP	
PC5	40"	#9 @ 8" EW BOT #6 @ 12" EW TOP	
PC6	54"	#9 @ 6" EW BOT #6 @ 12" EW TOP	
PC7A	50"	(12) #10 LONG BOT (11) #10 TRANS BOT	
PC7B	50"	#10 @ 12" EW BOT #6 @ 12" EW TOP	
PC7C	50"	#10 @ 12" EW BOT #8 @ 12" EW TOP	
PC7D	50"	(12) #10 LONG BOT (11) #10 TRANS BOT	
PC14	40"	#10 @ 8" EW BOT #6 @ 12" EW TOP	

- PILE CAP NOTES:**
- FOR GENERAL NOTES SEE DRAWING S-001.
 - SEE PILE CAP PLANS ON THIS DRAWING AND 1/S-501 FOR TYPICAL PILE CAP DETAIL.
 - ALL REINF SHALL BE PLACED AT EVEN SPACING UNLESS NOTED OTHERWISE.
 - ALL BOTTOM PILE CAP REINF SHALL HAVE STD HOOKS @ ENDS.
 - LONGITUDINAL REINF ARE THE LONGER BARS, AND SHALL BE PLACED AT THE LOWER LAYER FOR BOTTOM REINFORCEMENT AND UPPER LAYER FOR TOP REINF.
 - BOTTOM OF PILE ELEV OF 750' IS ESTIMATED AVERAGE ELEVATION FOR BIDDING PURPOSES ONLY AND BASED ON GEOTECHNICAL REPORT REFERENCED IN GENERAL NOTES. FINAL ELEVATION MUST BE VERIFIED BY GEOTECHNICAL ENGINEER.
 - VERT. PILE REINF LENGTHS ARE FROM BOTTOM OF PILE CAP. TENSION PILES REQUIRE REINFORCEMENT TO EXTEND FULL LENGTH OF PILES.
 - FOR PILES BETWEEN SCHEDULED CAPS, PROVIDE PILE REINF SAME AS DETAILED ON 1/S-501 EXCEPT FOR 2'-0" EMBEDMENT OF PILE REINF INTO 2'-0" DEEP CAP WHERE EMBEDMENT MUST BE REDUCED TO 1'-5".
 - CONTRACTOR IS RESPONSIBLE FOR ALL ENGINEERING COSTS AND REQUIRED FOUNDATION MODIFICATION COSTS DUE TO TOLERANCE ISSUES RELATED TO INSTALLED PILES.



CONSULTANTS: WALKER PARKING CONSULTANTS 225 Auto Drive, Suite 1 Ann Arbor, MI 48106	MIDWESTERN CONSULTING 3815 Plaza Drive, Ann Arbor, Michigan 48106 (734) 995-0200 • www.midwesternconsulting.com Land Development • Land Survey • Institutional • Municipal Wireless Communications • Transportation • Landfill Services	KEYPLAN	ARCHITECT + ENGINEERS: BANCROFT ARCHITECTS + ENGINEERS VA CONTRACT NO. VA250-17-C-0008	Drawing Title FOUNDATION SCHEDULE AND DETAILS Approved Project Director	Project Title CONSTRUCT NORTH PARKING STRUCTURE Location ANN ARBOR, MICHIGAN Date 08-18-2017 Checked JBM Drawn KJW	Project Number 506-331 Building Number 29 Drawing Number S-501	Office of Construction and Facilities Management Department of Veterans Affairs
---	--	----------------	---	---	--	--	---