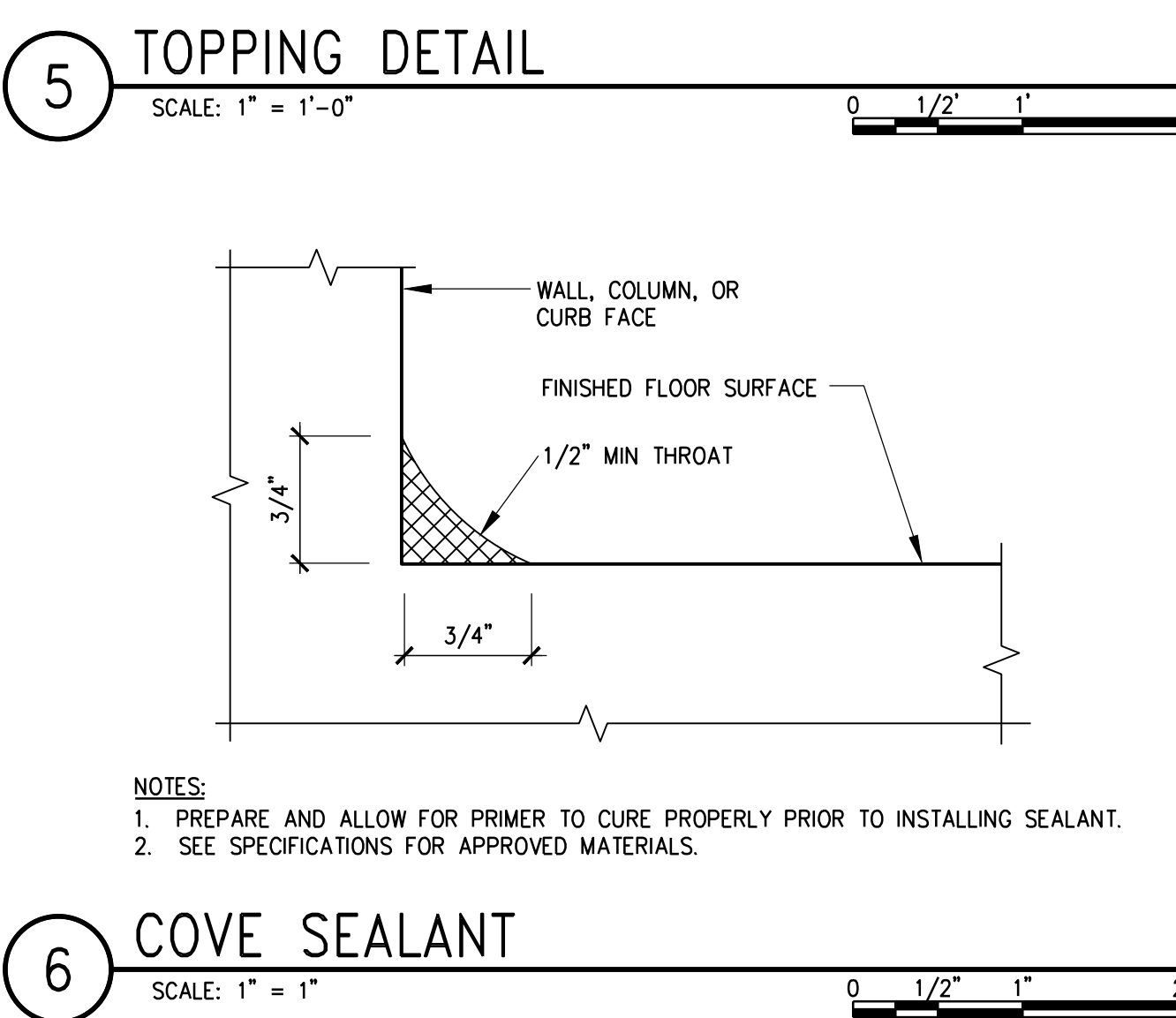
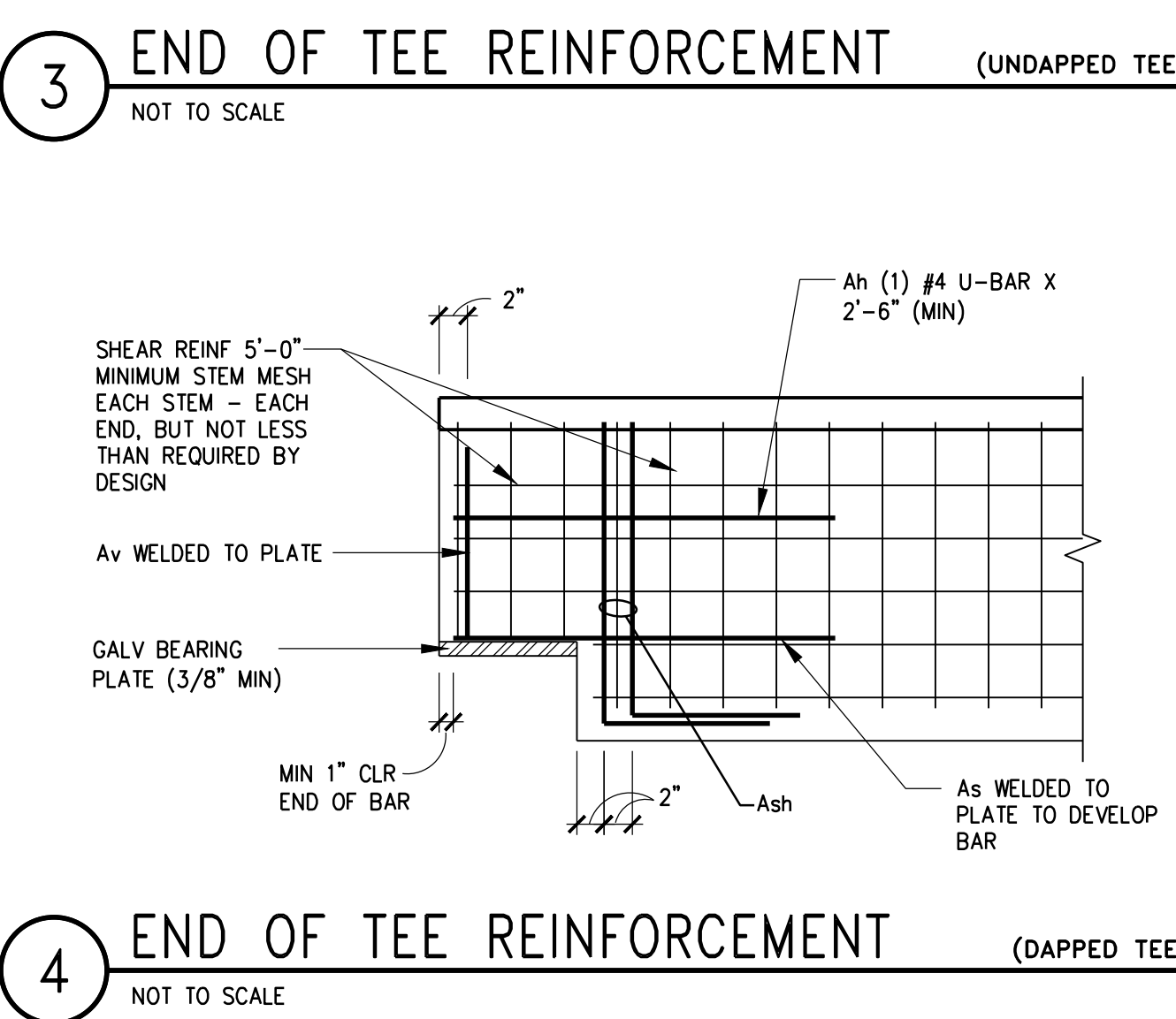
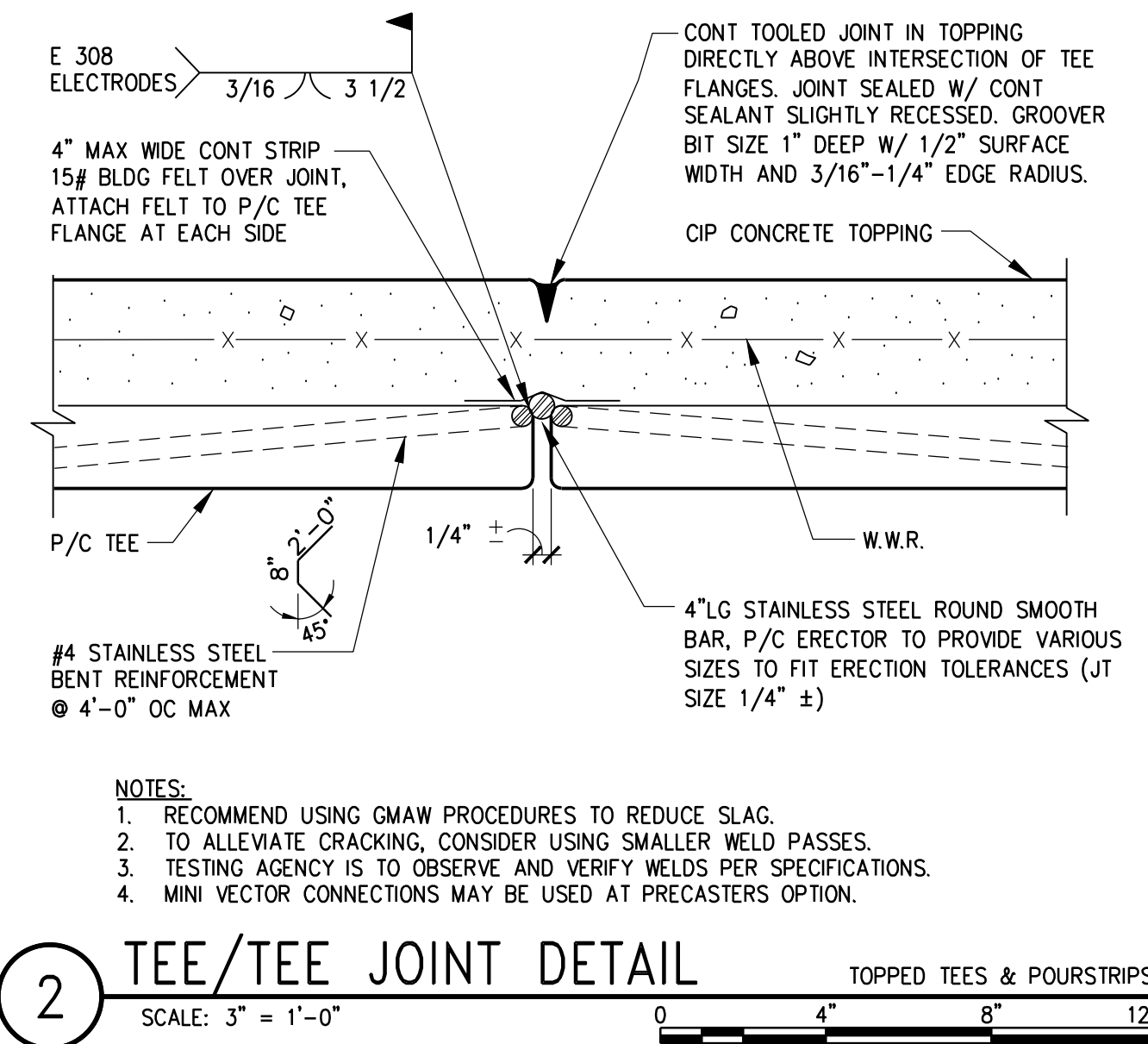
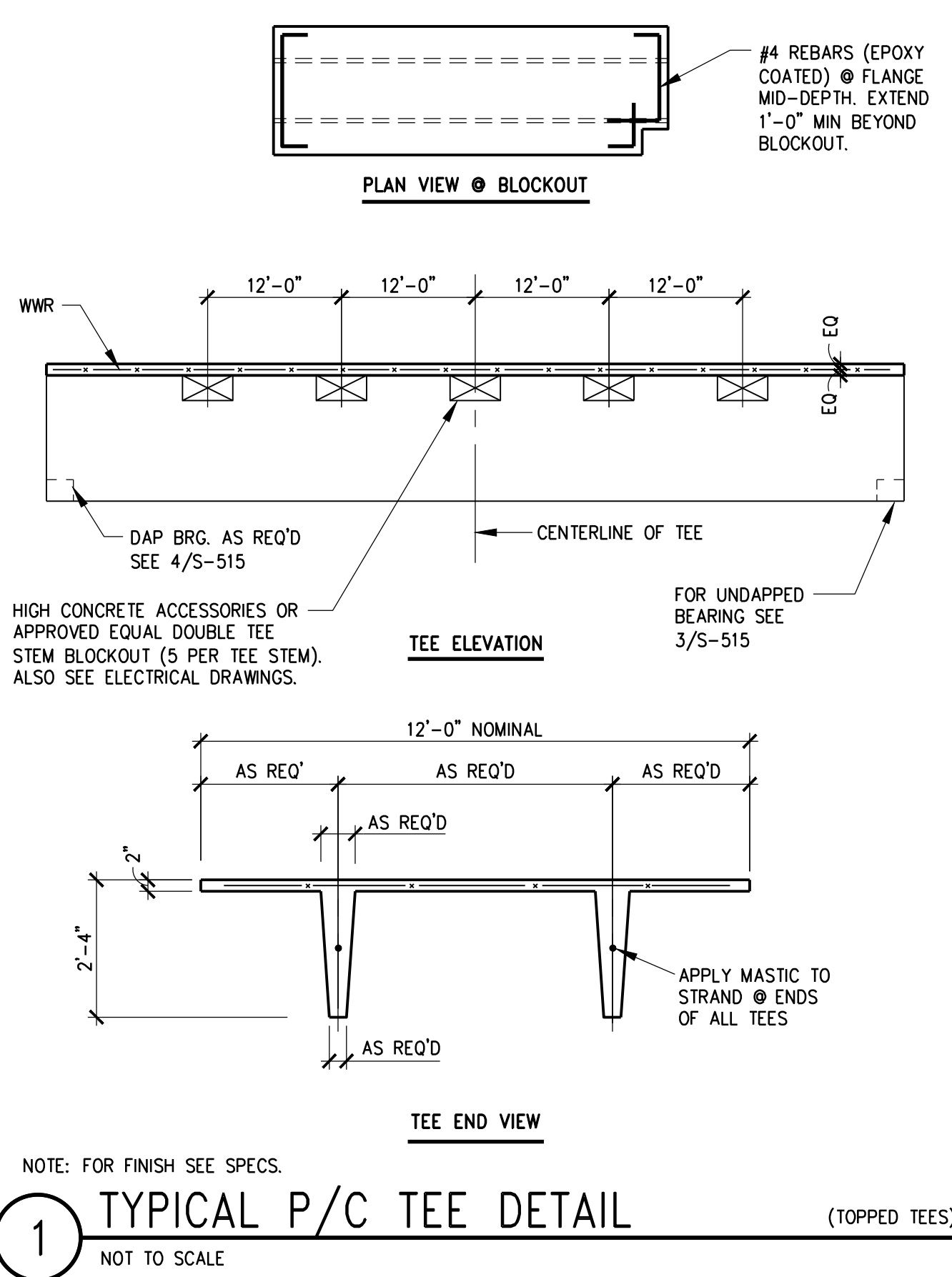
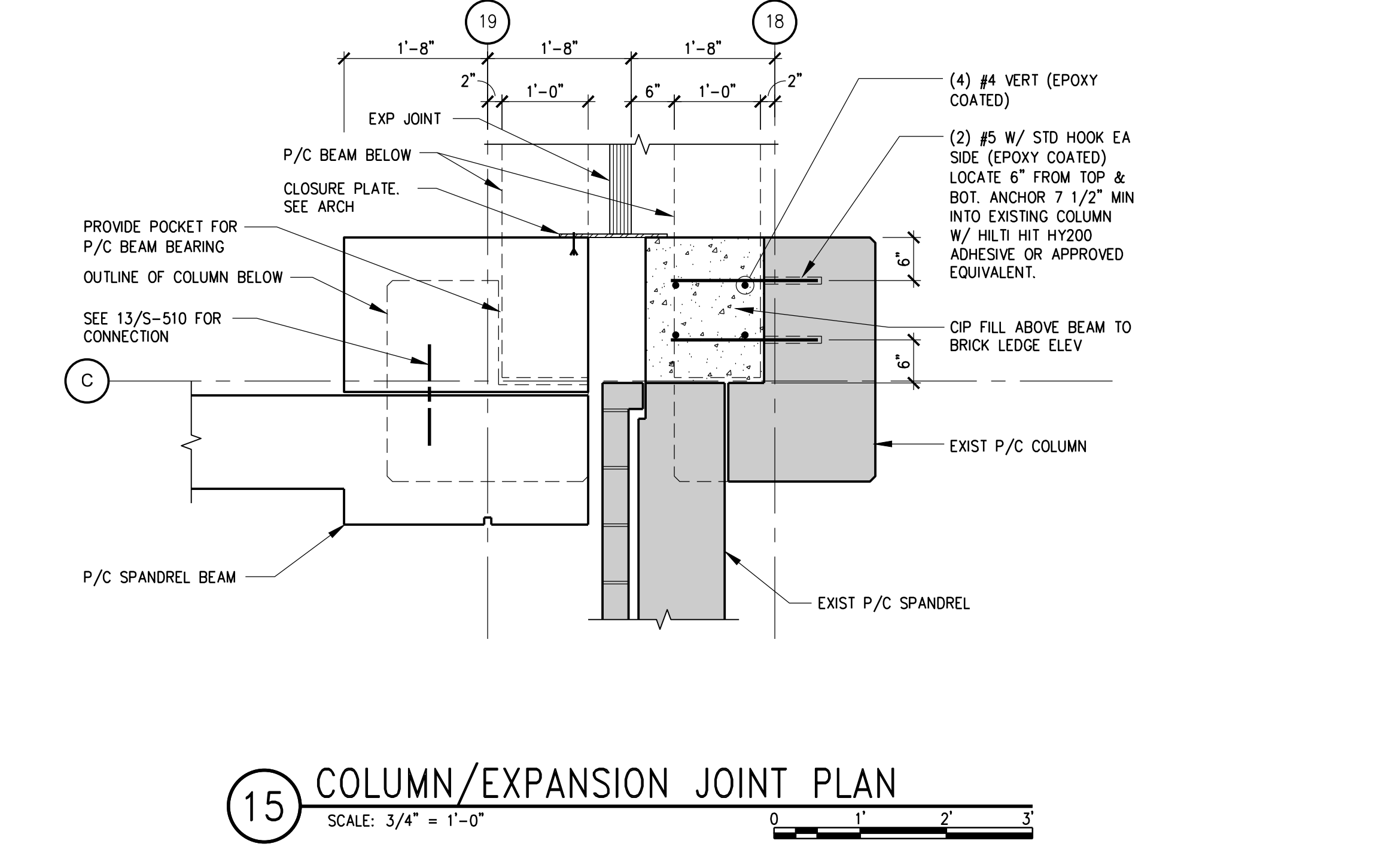
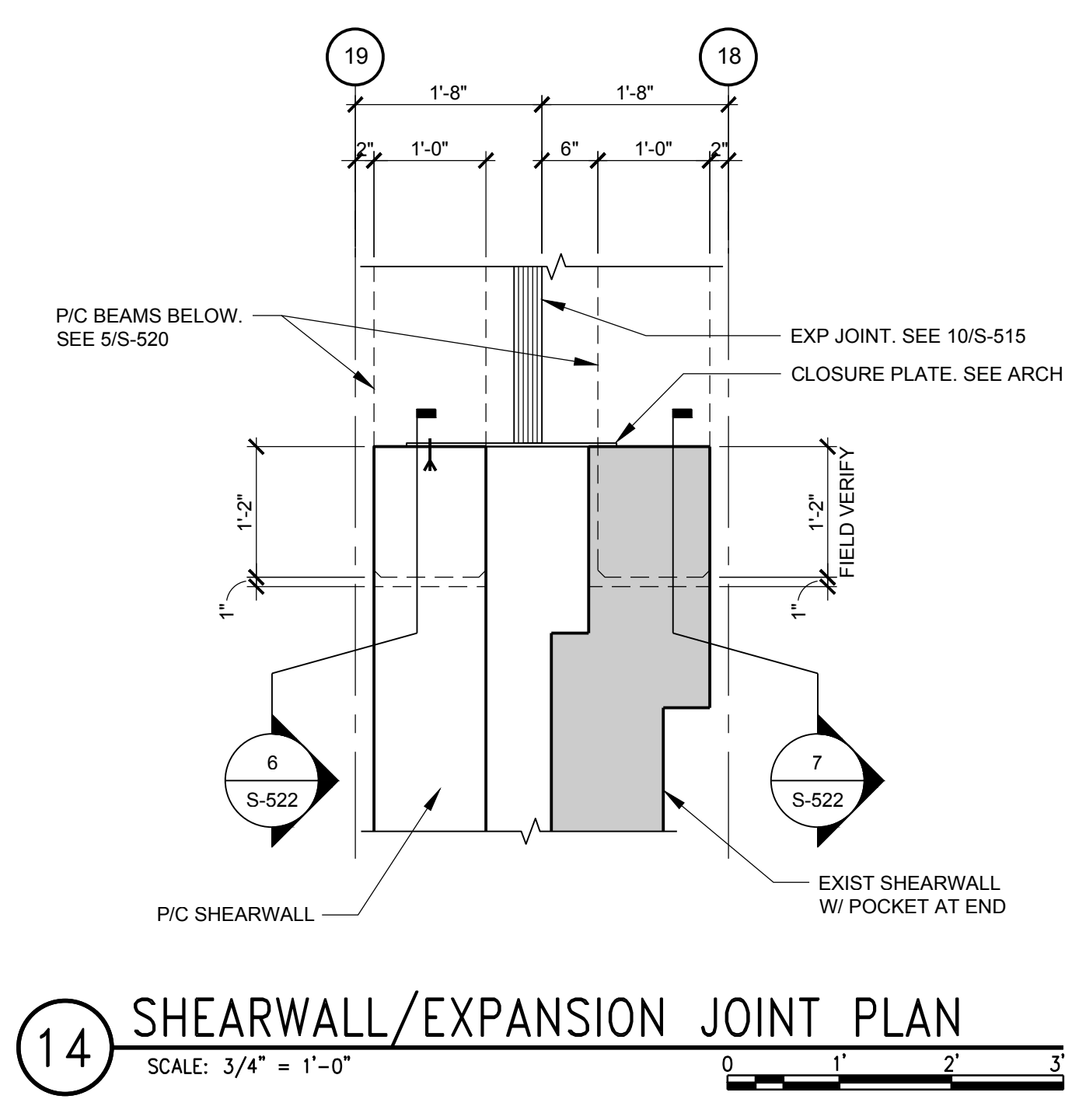
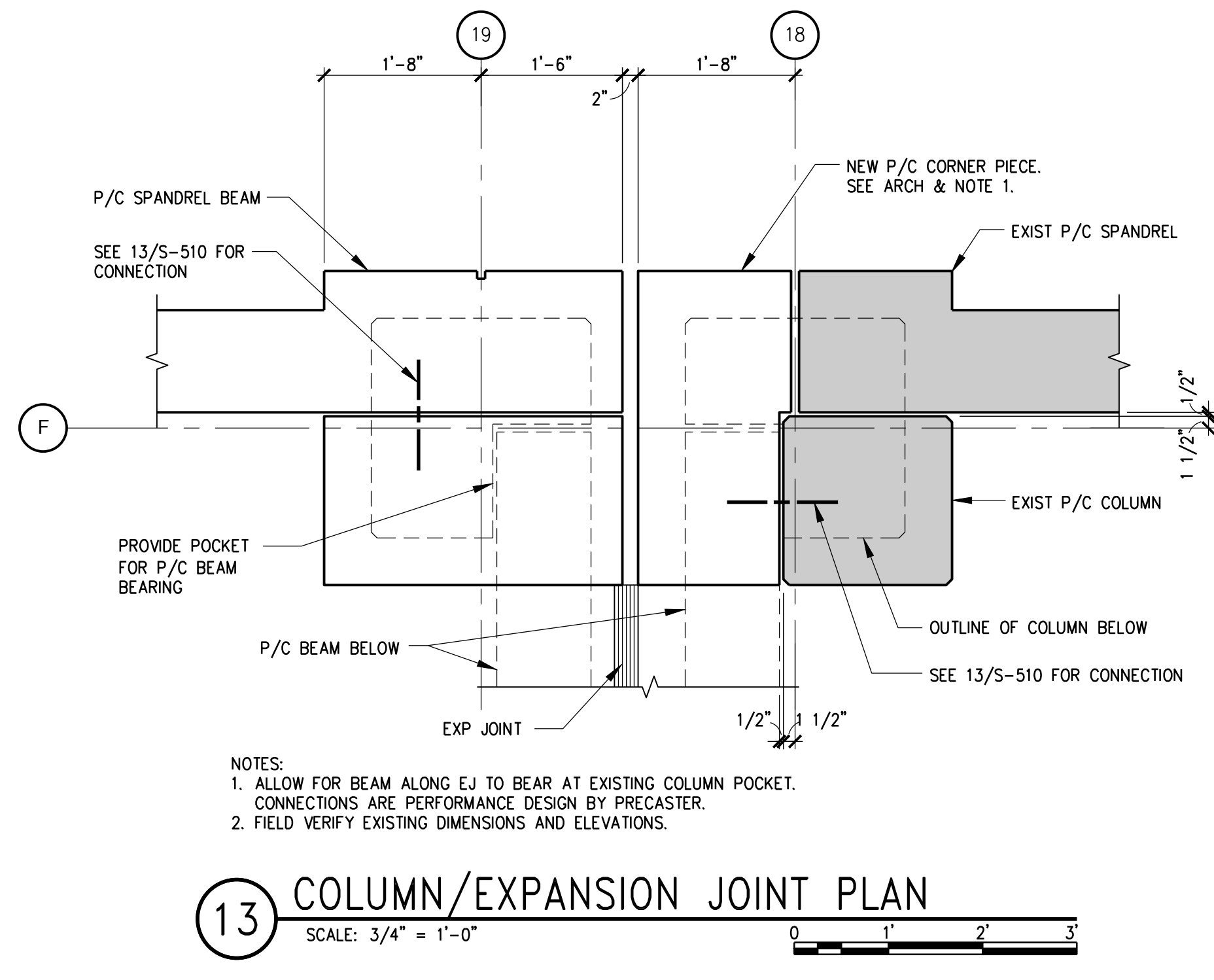
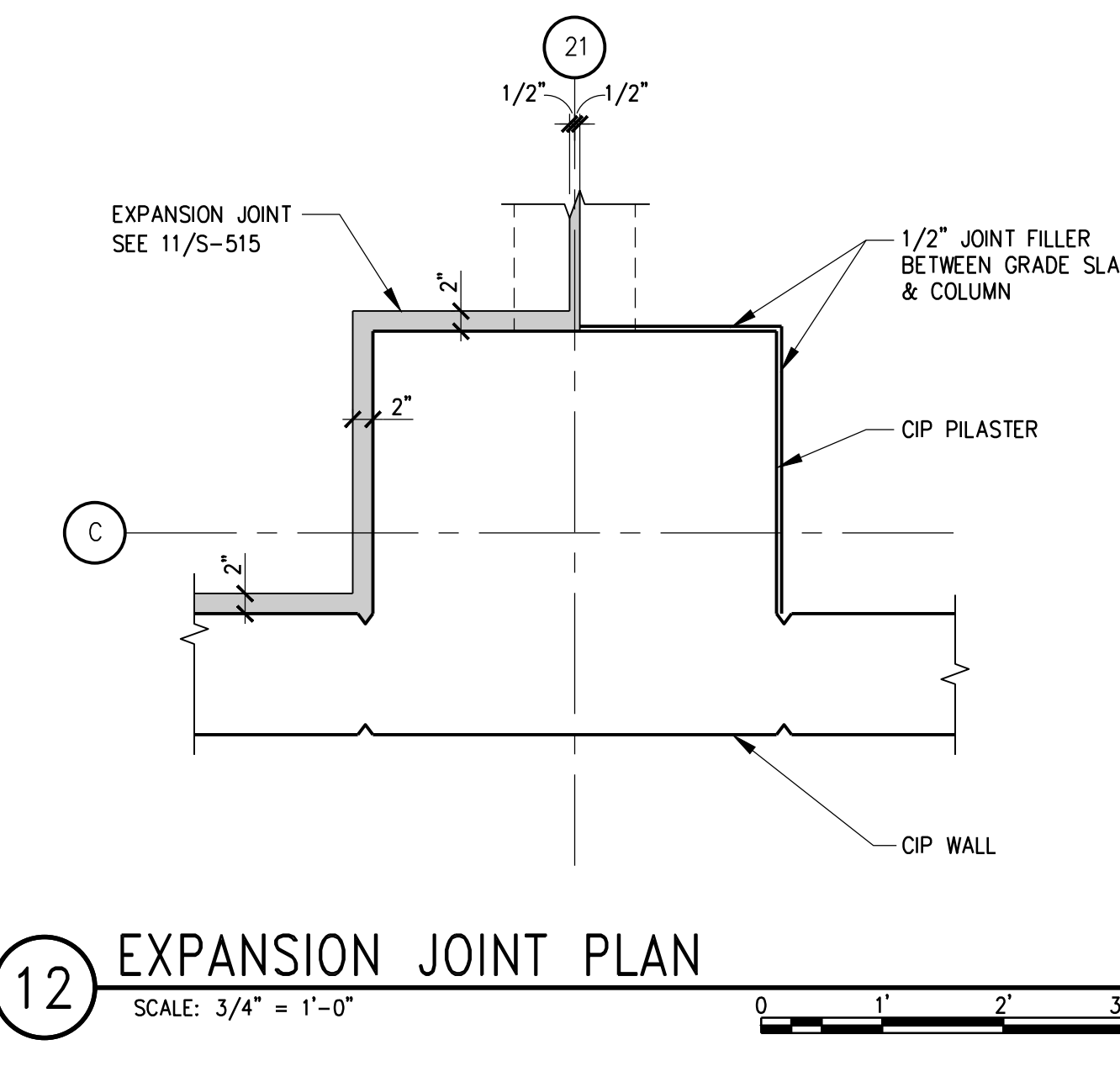
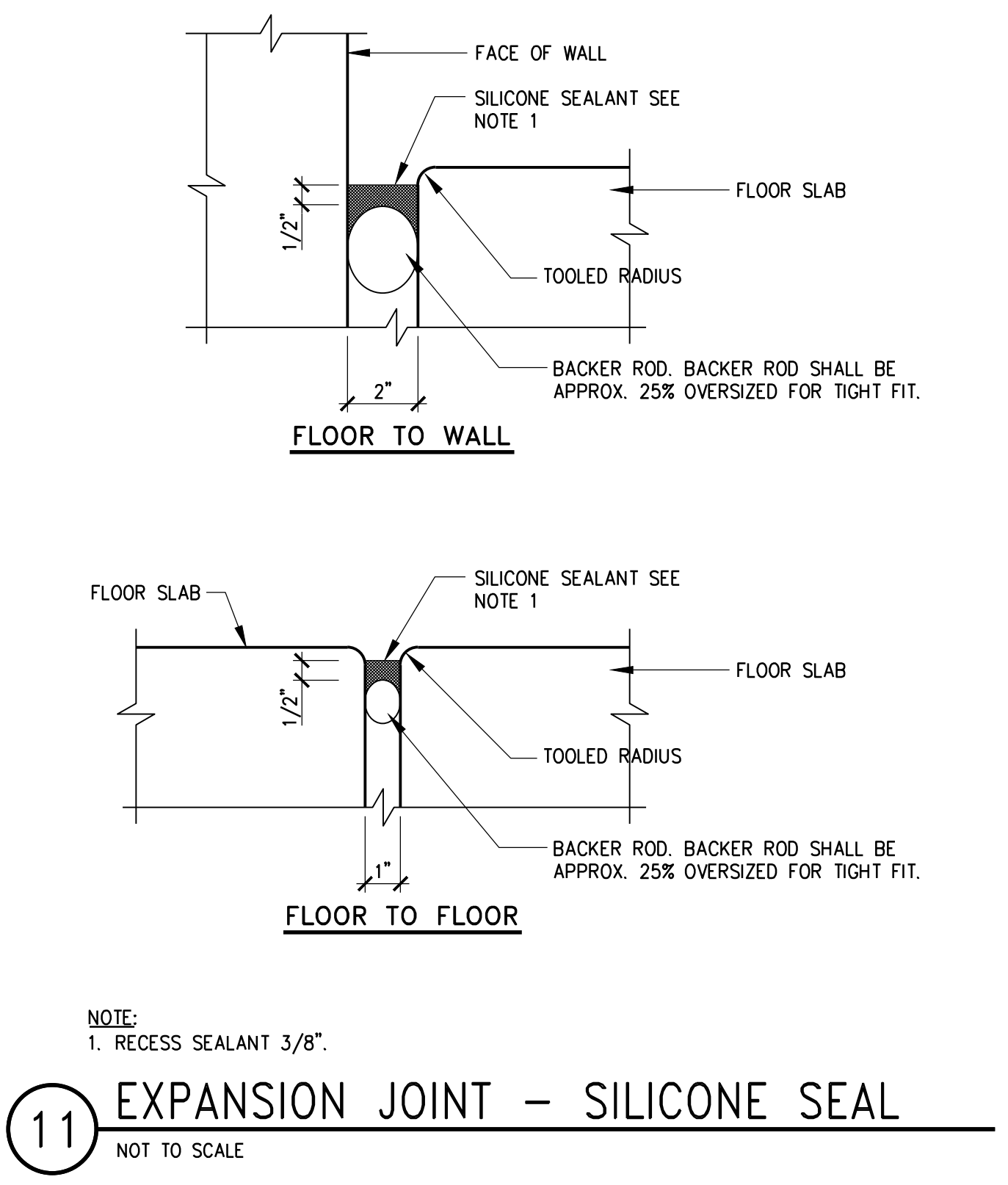
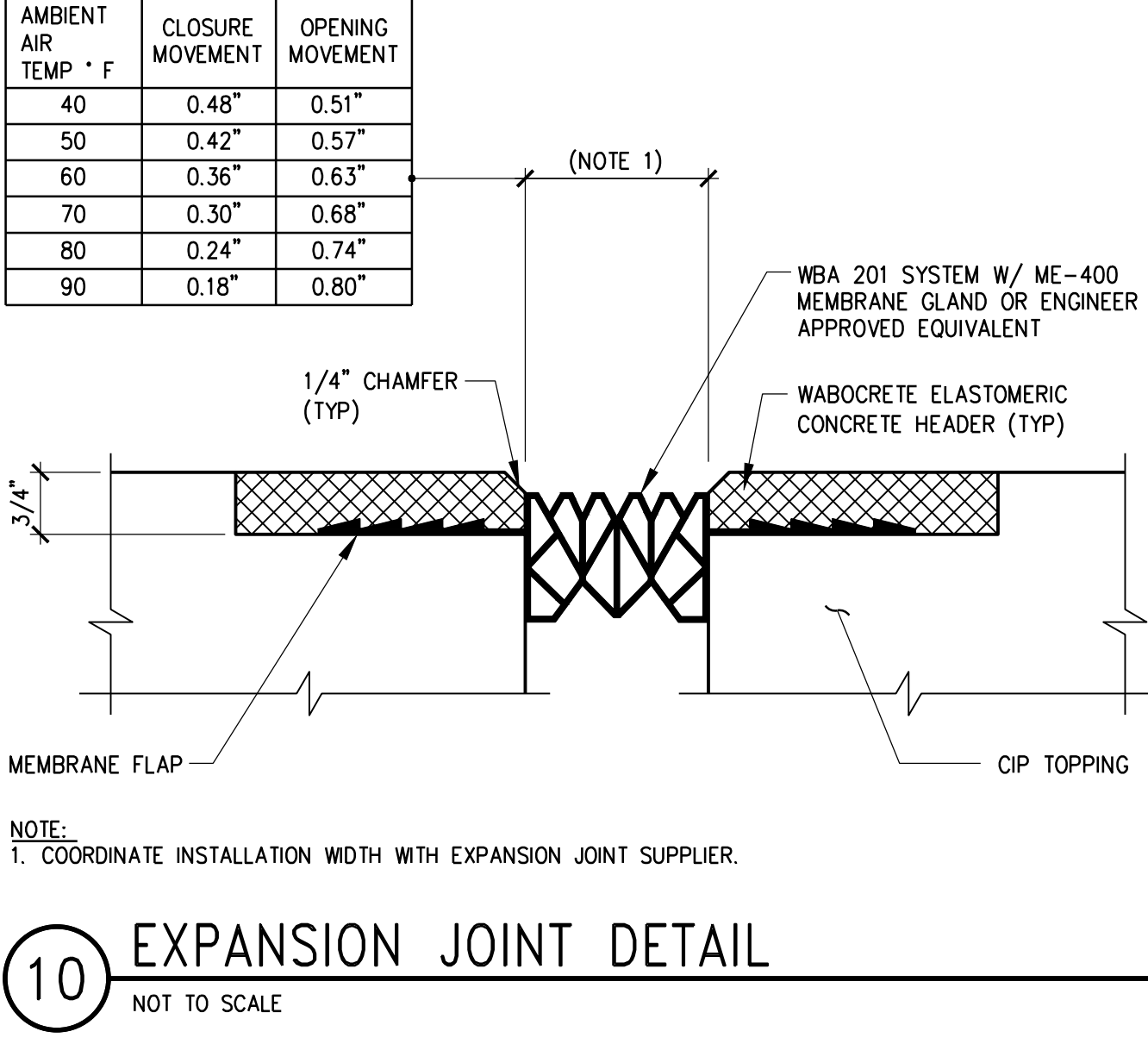
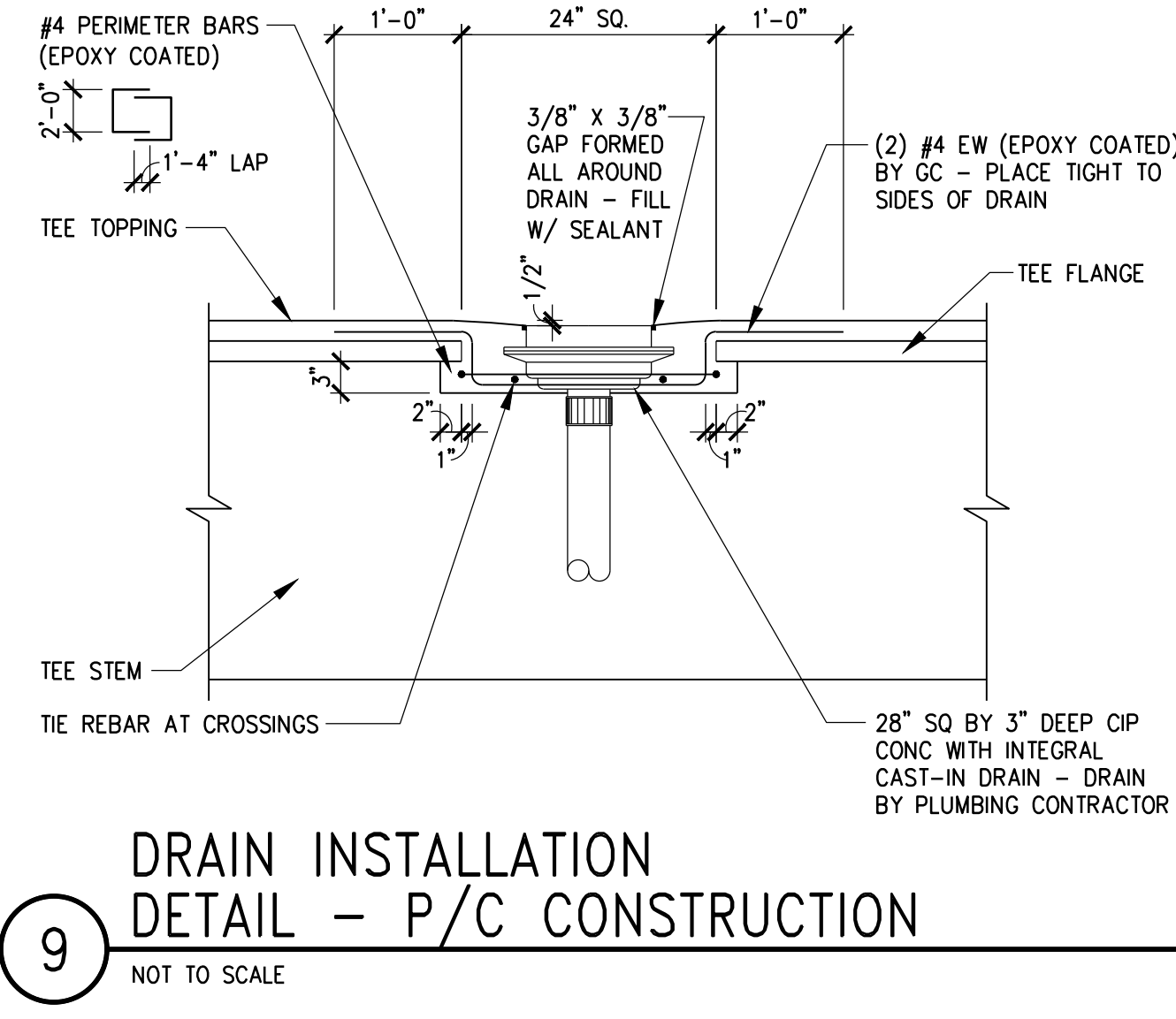
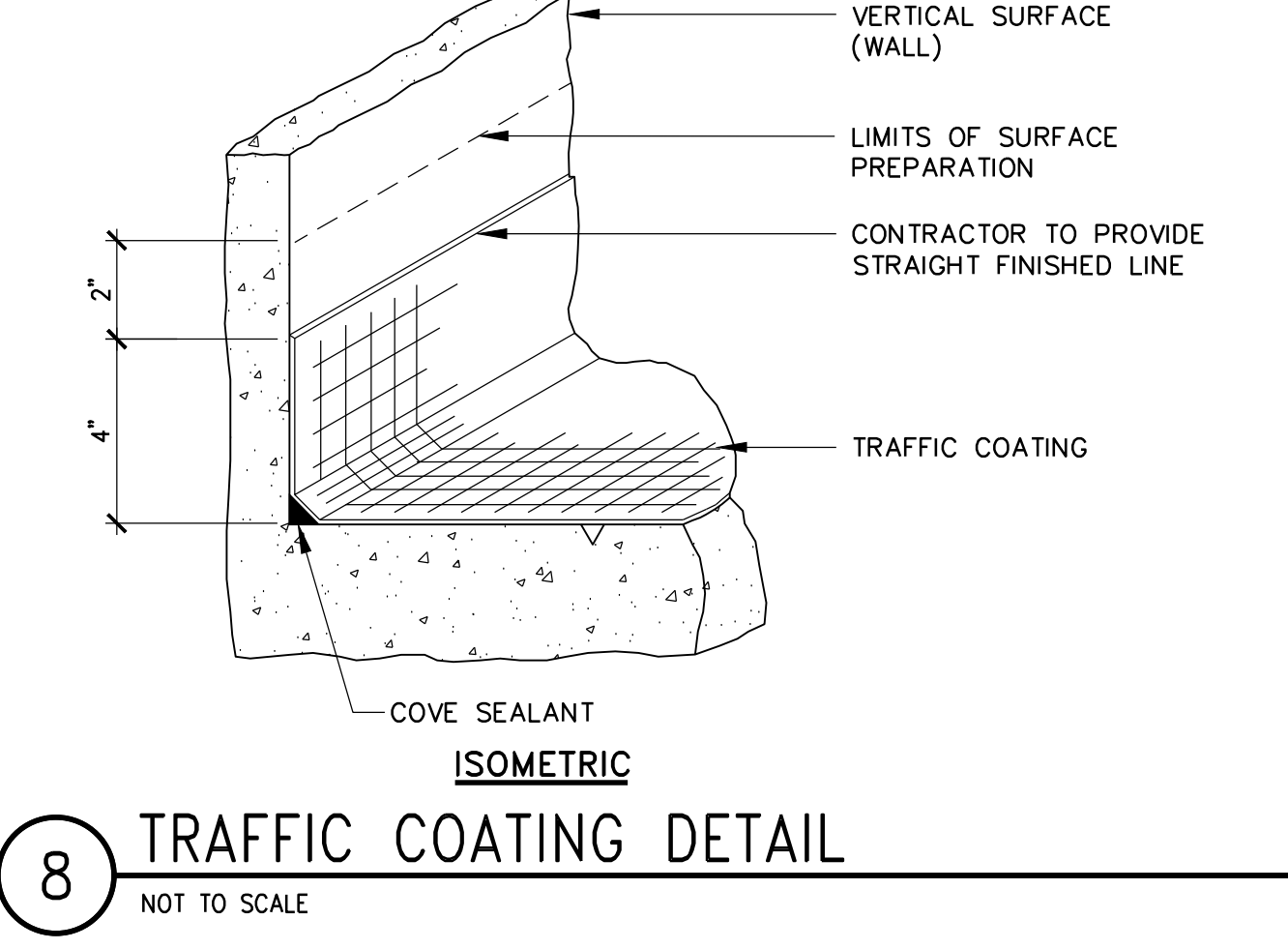
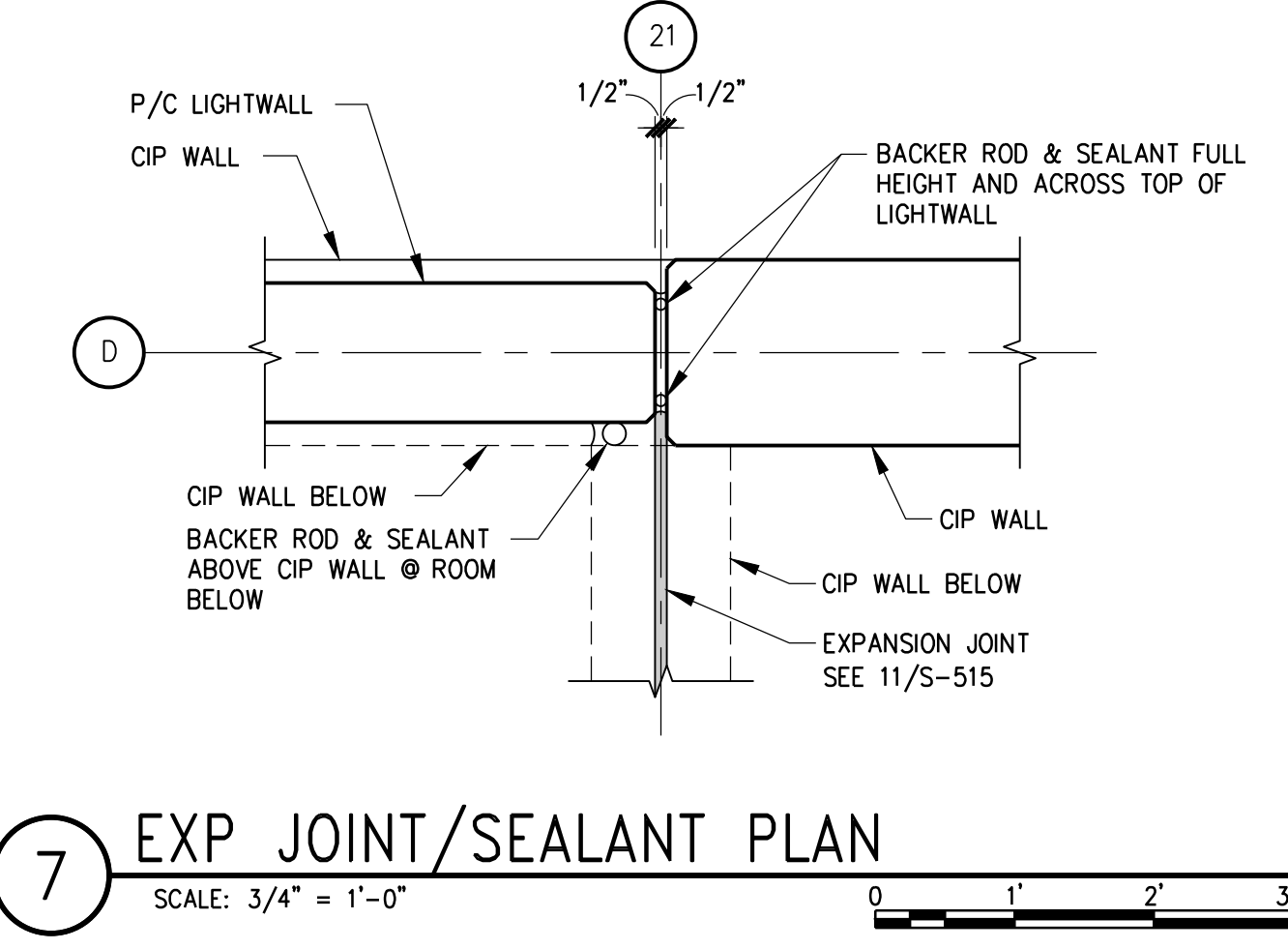


one eighth inch = one foot
one quarter inch = one foot
one half inch = one foot
three eighths inch = one foot
three quarters inch = one foot
one inch = one foot
one and one half inches = one foot
two inches = one foot
three inches = one foot
four inches = one foot
five inches = one foot
six inches = one foot
seven inches = one foot
eight inches = one foot
nine inches = one foot
ten inches = one foot
eleven inches = one foot
twelve inches = one foot
thirteen inches = one foot
fourteen inches = one foot
fifteen inches = one foot
sixteen inches = one foot
seventeen inches = one foot
eighteen inches = one foot
nineteen inches = one foot
twenty inches = one foot
twenty one inches = one foot
twenty two inches = one foot
twenty three inches = one foot
twenty four inches = one foot
twenty five inches = one foot
twenty six inches = one foot
twenty seven inches = one foot
twenty eight inches = one foot
twenty nine inches = one foot
thirty inches = one foot
thirty one inches = one foot
thirty two inches = one foot
thirty three inches = one foot
thirty four inches = one foot
thirty five inches = one foot
thirty six inches = one foot
thirty seven inches = one foot
thirty eight inches = one foot
thirty nine inches = one foot
forty inches = one foot
forty one inches = one foot
forty two inches = one foot
forty three inches = one foot
forty four inches = one foot
forty five inches = one foot
forty six inches = one foot
forty seven inches = one foot
forty eight inches = one foot
forty nine inches = one foot
fifty inches = one foot
fifty one inches = one foot
fifty two inches = one foot
fifty three inches = one foot
fifty four inches = one foot
fifty five inches = one foot
fifty six inches = one foot
fifty seven inches = one foot
fifty eight inches = one foot
fifty nine inches = one foot
sixty inches = one foot
sixty one inches = one foot
sixty two inches = one foot
sixty three inches = one foot
sixty four inches = one foot
sixty five inches = one foot
sixty six inches = one foot
sixty seven inches = one foot
sixty eight inches = one foot
sixty nine inches = one foot
seventy inches = one foot
seventy one inches = one foot
seventy two inches = one foot
seventy three inches = one foot
seventy four inches = one foot
seventy five inches = one foot
seventy six inches = one foot
seventy seven inches = one foot
seventy eight inches = one foot
seventy nine inches = one foot
eighty inches = one foot
eighty one inches = one foot
eighty two inches = one foot
eighty three inches = one foot
eighty four inches = one foot
eighty five inches = one foot
eighty six inches = one foot
eighty seven inches = one foot
eighty eight inches = one foot
eighty nine inches = one foot
ninety inches = one foot
ninety one inches = one foot
ninety two inches = one foot
ninety three inches = one foot
ninety four inches = one foot
ninety five inches = one foot
ninety six inches = one foot
ninety seven inches = one foot
ninety eight inches = one foot
ninety nine inches = one foot
one hundred inches = one foot



- P/C TEE NOTES:
- FOR GENERAL NOTES SEE DRAWING S-001.
 - TEE DESIGN IS PERFORMANCE DESIGN AND SHALL INCLUDE TYPE, NUMBER AND LOCATION OF STRANDS AS WELL AS SHEAR, FLANGE AND END OF TEE REINFORCEMENT. SEE SPECIFICATION SECTION 034133 FOR PRECAST CONCRETE. SEE 1/S-515 FOR TYPICAL TEE DETAIL.
 - PRECAST TEE FLANGE AND TOPPING REINFORCEMENT IS PERFORMANCE DESIGN BY PRECASTER. TOPPING THICKNESS IS 3" UN.
 - PLACE REINFORCEMENT AT MID-DEPTH OF FLANGE OR TOPPING.
 - LARGER QUANTITY OF REINFORCEMENT SHALL BE ORIENTED IN TRANSVERSE DIRECTION.
 - PROVIDE TOPPING WWR IN SHEETS NOT ROLLS.
 - SUPPORT TOPPING WWR WITH CONTINUOUS BAR SUPPORTS SPACED @ 2'-0" OC MAX.
 - FOR TEE/TEE JOINT DETAIL SEE 2/S-515.
 - FOR EMBEDDED PLATES TO RECEIVE WELDS AS PART OF WELDED CONNECTIONS SEE 12/S-510.



100% FINAL BID DOCUMENTS 08-18-2017		CONSULTANTS:		KEYPLAN	ARCHITECT + ENGINEERS: BANCROFT ARCHITECTS + ENGINEERS VA CONTRACT NO. VA250-17-C-0008	Drawing Title TEE DETAILS	Project Title CONSTRUCT NORTH PARKING STRUCTURE	Project Number 506-331	Building Number 29	Office of Construction and Facilities Management	
100% BID DOCUMENTS - NOT FOR CONSTRUCTION 07-24-2017											
95% CONSTRUCTION DOCUMENTS SUBMISSION 06-15-2017				Approved Project Director	Location ANN ARBOR, MICHIGAN	Date 08-18-2017	Checked JBM	Drawn KJW	Drawing Number S-515	Department of Veterans Affairs	
65% DESIGN DEVELOPMENT SUBMISSION 04-19-2017		MIDWESTERN CONSULTING 3815 Plaza Drive, Ann Arbor, Michigan 48106 (734) 995-0200 • www.midwesternconsulting.com Land Development • Land Survey • Institutional • Municipal Wireless Communications • Transportation • Landfill Services									
35% SCHEMATIC DESIGN SUBMISSION 03-06-2017		WALKER PARKING CONSULTANTS 225 Auto Drive, Suite 1 Ann Arbor, MI 48106									

VA FORM 08-6231