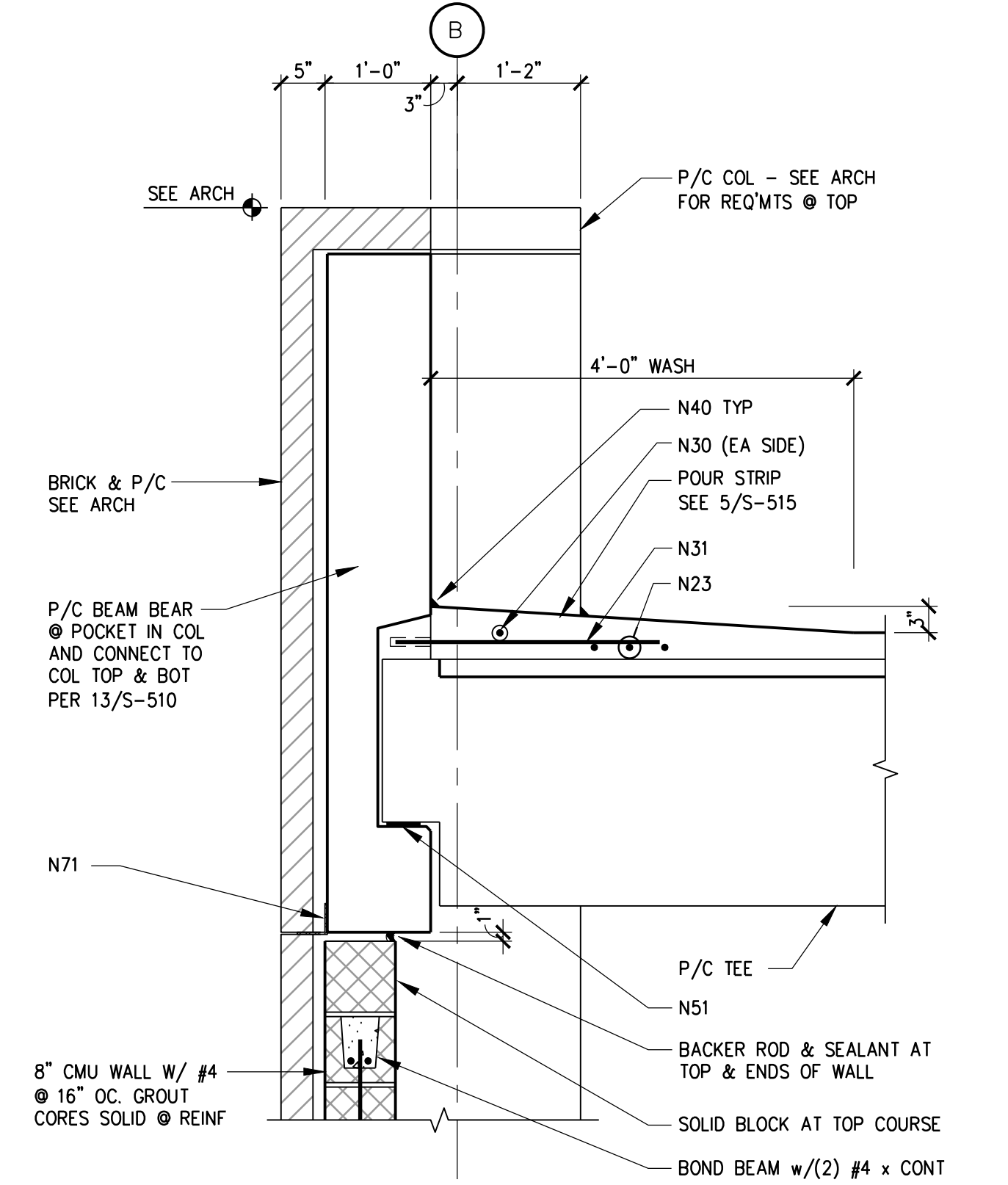
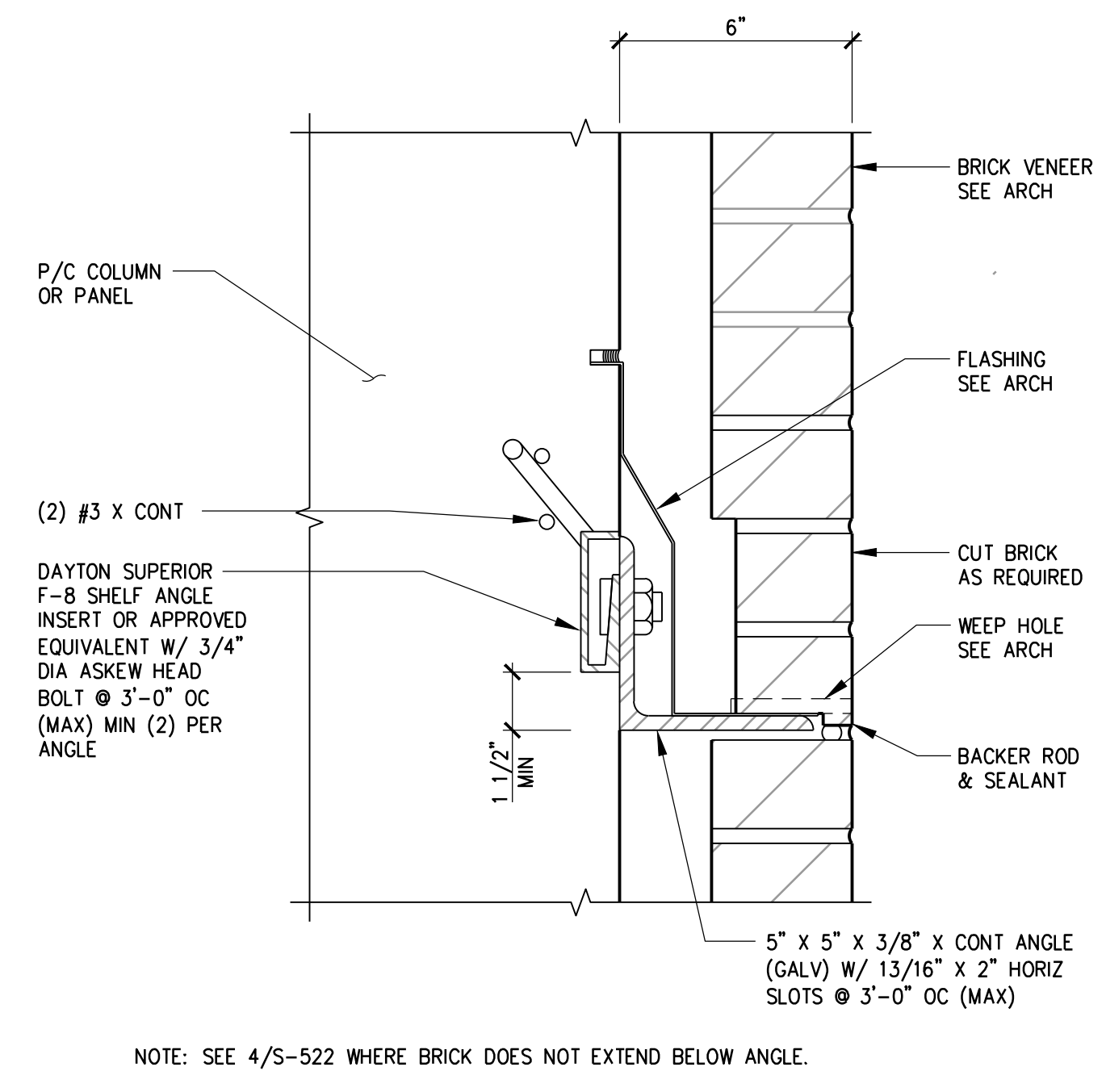


KEY NOTES:

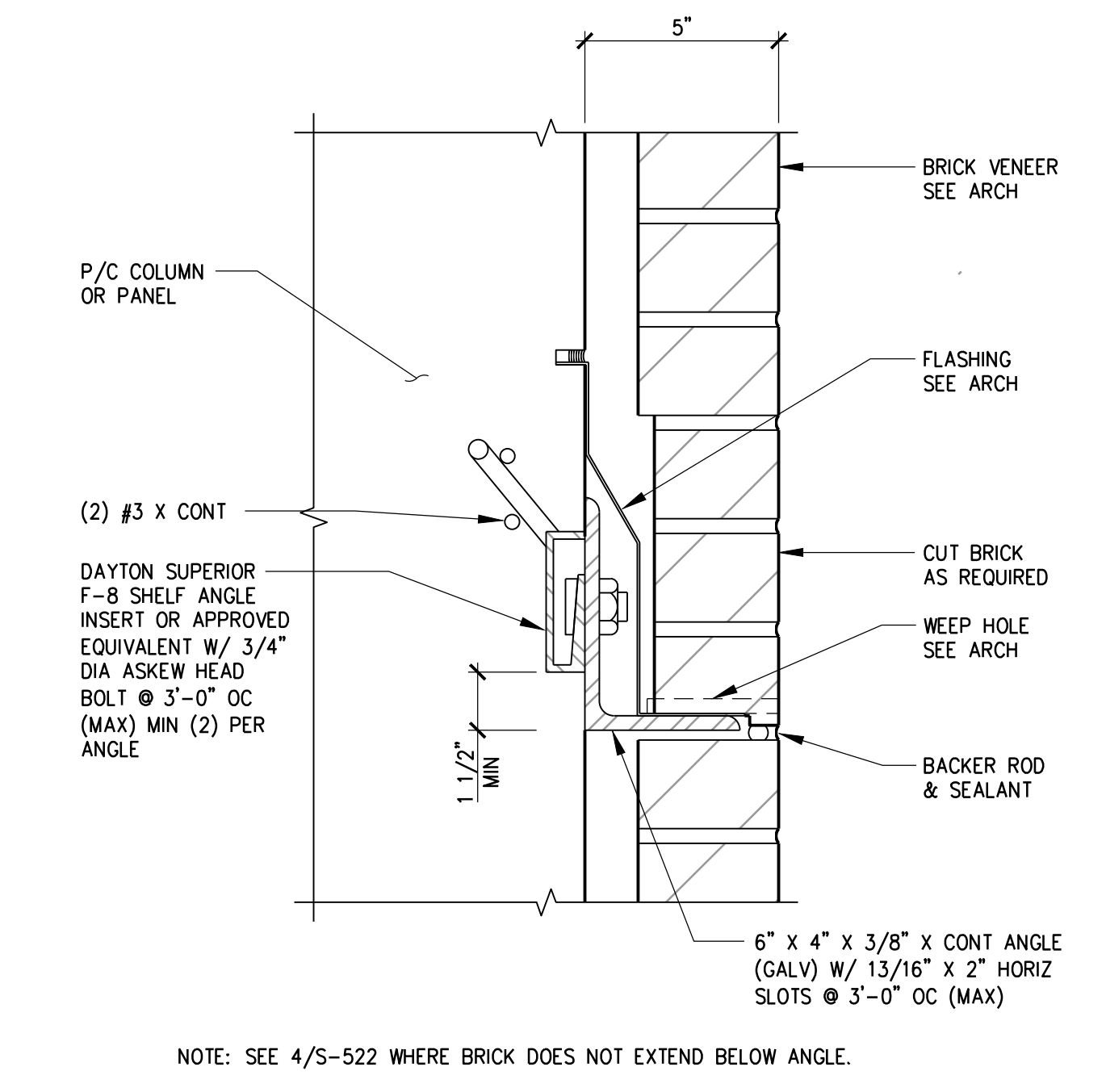
- N10. FOR GENERAL NOTES SEE DRAWING S-001.
- N12. SLOPE BEARING PLATES IN BEAMS AND SUPPORT PLATES IN COLUMNS, AS REQ'D TO PROVIDE UNIFORM BEARING ON PADS (TYPICAL).
- N20. #5 (MIN) X 8'-0" @ EA TEE STEM (EPOXY COATED).
- N21. #4 L-BAR W/ 2'-0" LEGS @ 2'-6" OC (EPOXY COATED).
- N23. (3) #5 (MIN) X CONT (EPOXY COATED).
- N25. #4 X 4'-6" @ 12" OC (EPOXY COATED).
- N26. #4 W/ STD HOOK @ 12" OC (EPOXY COATED) ANCHOR TO EXISTING WALL WITH HILTI HIT HY150 (4 1/2" MIN EMBEDMENT) OR APPROVED EQUIVALENT.
- N27. #4 X 6'-8" @ 6" OC (EPOXY COATED).
- N29. LENTON FORM SAVER OR APPROVED EQUIVALENT - EMBED 18" MIN INTO P/C.
- N30. 3/4" DIA INSERT/COIL ROD (GALV) X 2'-6"
- N31. 3/4" DIA INSERT AND COIL ROD (GALV) X 2'-6" (6" FROM EDGE OF EACH POCKET) WITH #4 HAIRPIN W/ 2'-0" LEGS AROUND INSERT.
- N32. 3/4" DIA INSERT/COIL ROD (GALV) X 2'-6" @ 4' OC ADJUST INSERT ELEV FOR TEE CAMBER.
- N33. 3/4" DIA INSERT/COIL ROD (GALV) X 2'-6" @ EACH TEE STEM WITH (2) #4 X CONTINUOUS.
- N34. ERECTION CONNECTION BY PRECASTER
- N35. P/C TORSION/ERECTION CONN PERFORMANCE DESIGN BY PRECASTER. SEE 7 & 8/S-510
- N40. COVE SEALANT. SEE DETAIL 6/S-515
- N42. CONTINUOUS ETHAFOAM CONC DAM AS REQ'D.
- N43. TOOLED JOINT WITH SEALANT.
- N51. RANDOM ORIENTED FIBER REINF BRG PAD X 1/2" (MIN), GLUE TO TEE STEM.
- N52. SORBTEX OR APPROVED EQUIVALENT BRG PAD X 1/2" (MIN), GLUE TO BEAM, AT EACH END OF BEAM. PROVIDE HOLE IN PAD FOR BOLT AT REQUIRED LOCATIONS.
- N53. SORBTEX OR APPROVED EQUIVALENT BRG PAD X 1/2" (MIN), GLUE TO COLUMN POCKET.
- N60. TOP OF COLUMN AT TOP TIER. (SEE ARCH FOR ELEVATION & CONFIGURATION AT EXTERIOR).
- N62. FORM GAP OR EXTEND TEE FLANGE AT CONTRACTORS OPTION.
- N70. SEE 2/S-522 FOR ANGLE AND INSERTS.
- N71. SEE 3/S-522 FOR ANGLE AND INSERTS.
- N75. 3/4" DIA INSERT/COIL ROD (GALV) X 2'-6" @ 12" OC ADJUST INSERT ELEV FOR TEE CAMBER.



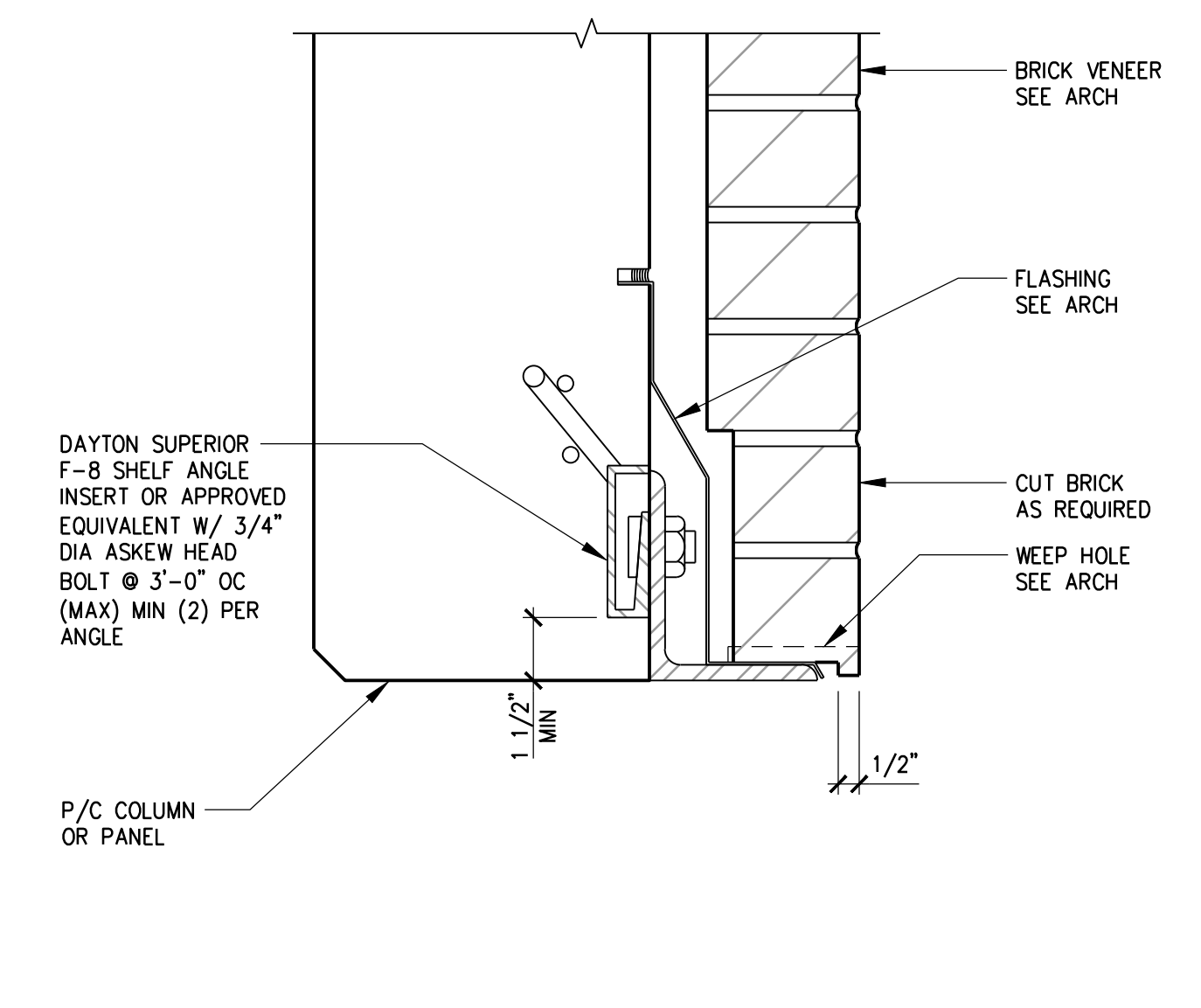
1 TEE/BAM/WALL/COLUMN DETAIL
SCALE: 3/4" = 1'-0"



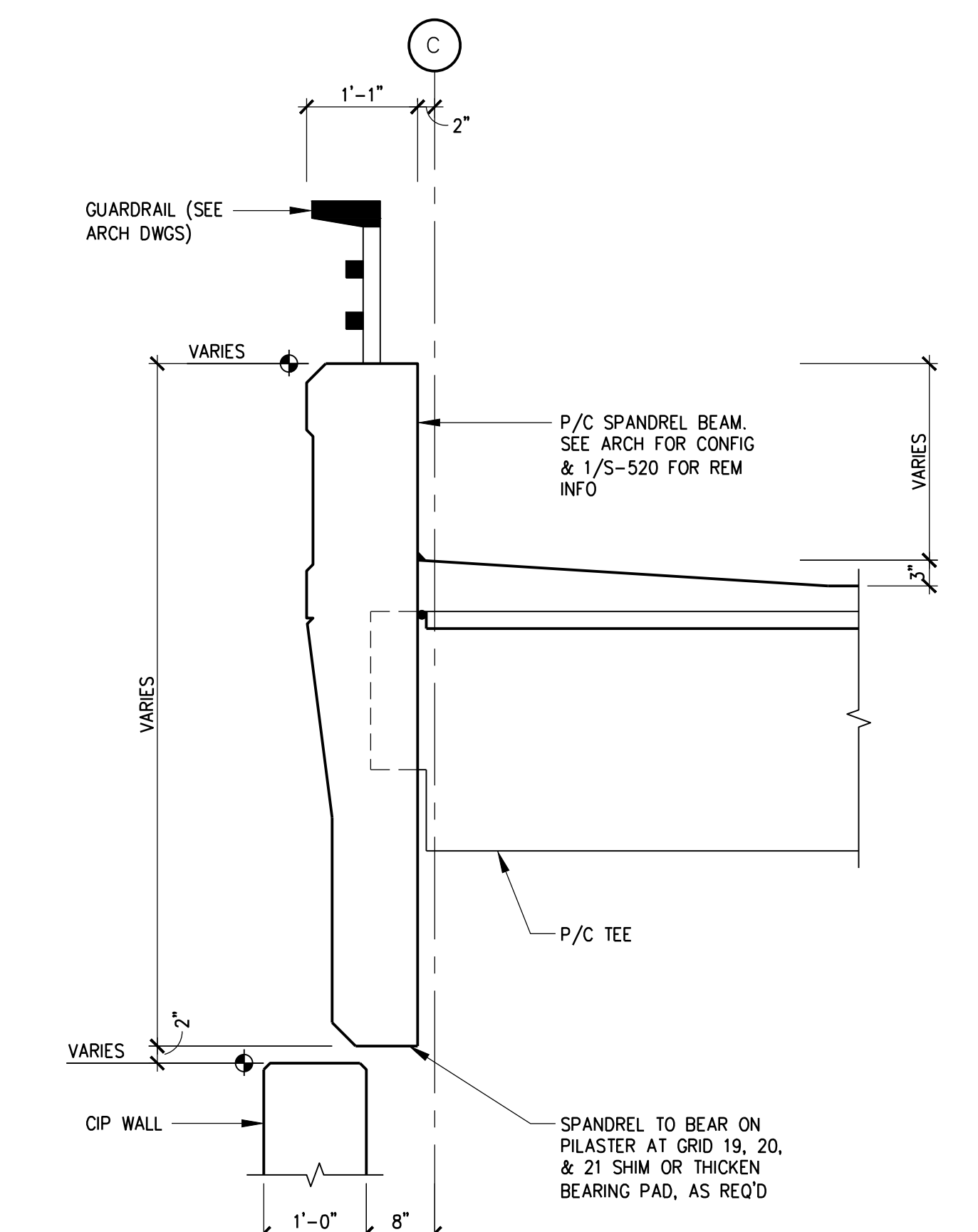
2 RELIEF ANGLE DETAIL
SCALE: 3" = 1'-0"



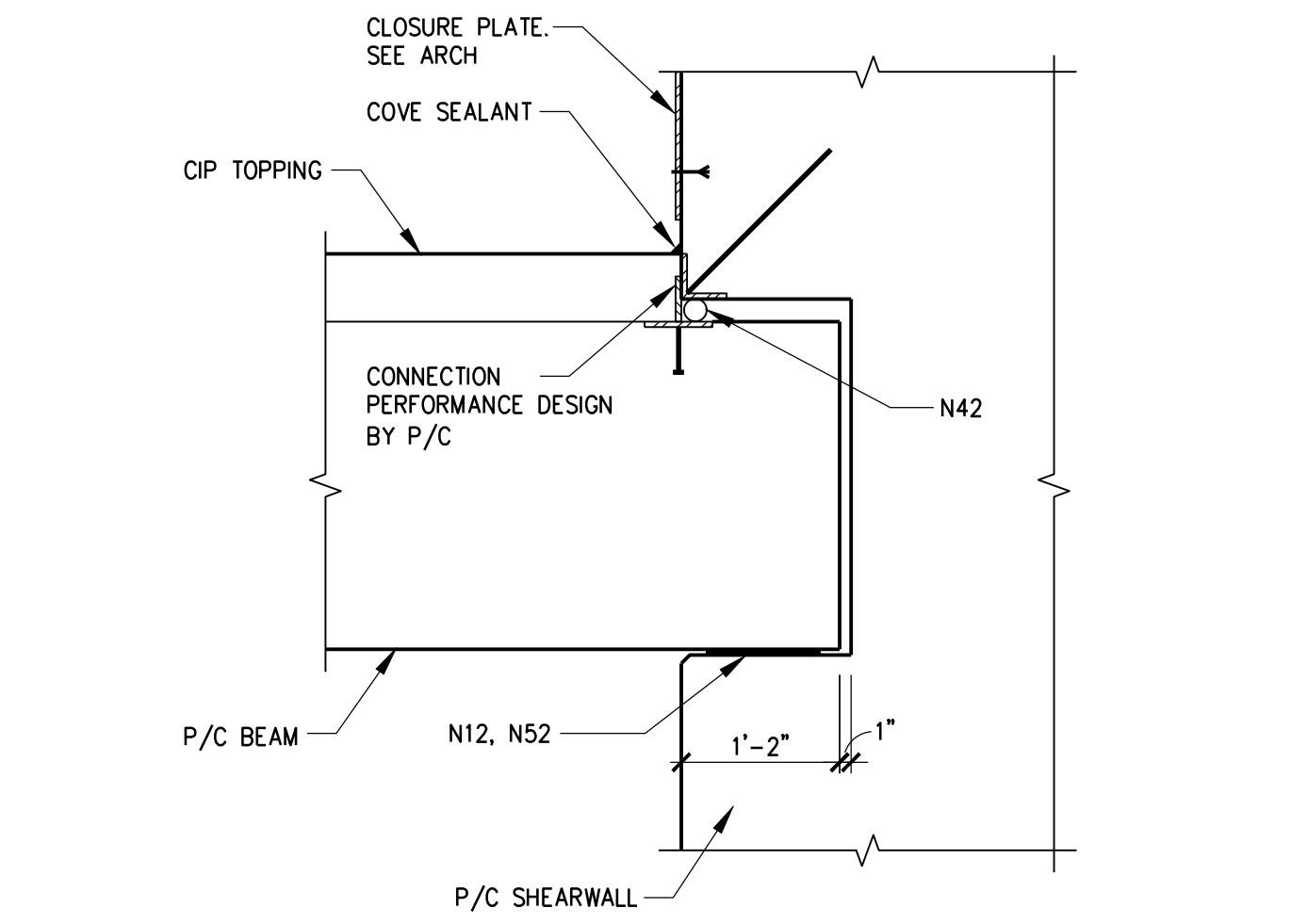
3 RELIEF ANGLE DETAIL
SCALE: 3" = 1'-0"



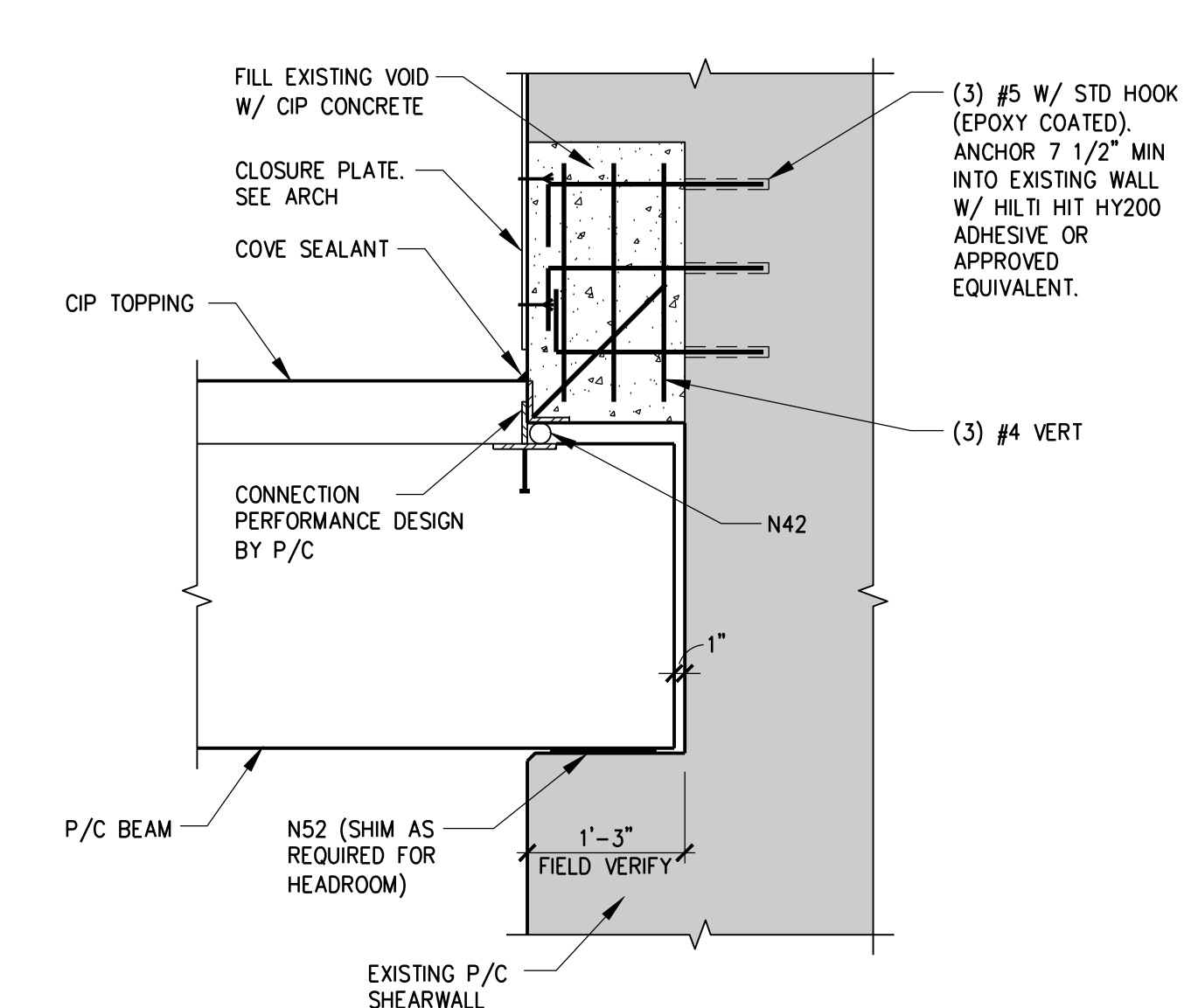
4 SHELF ANGLE DETAIL
SCALE: 3" = 1'-0"



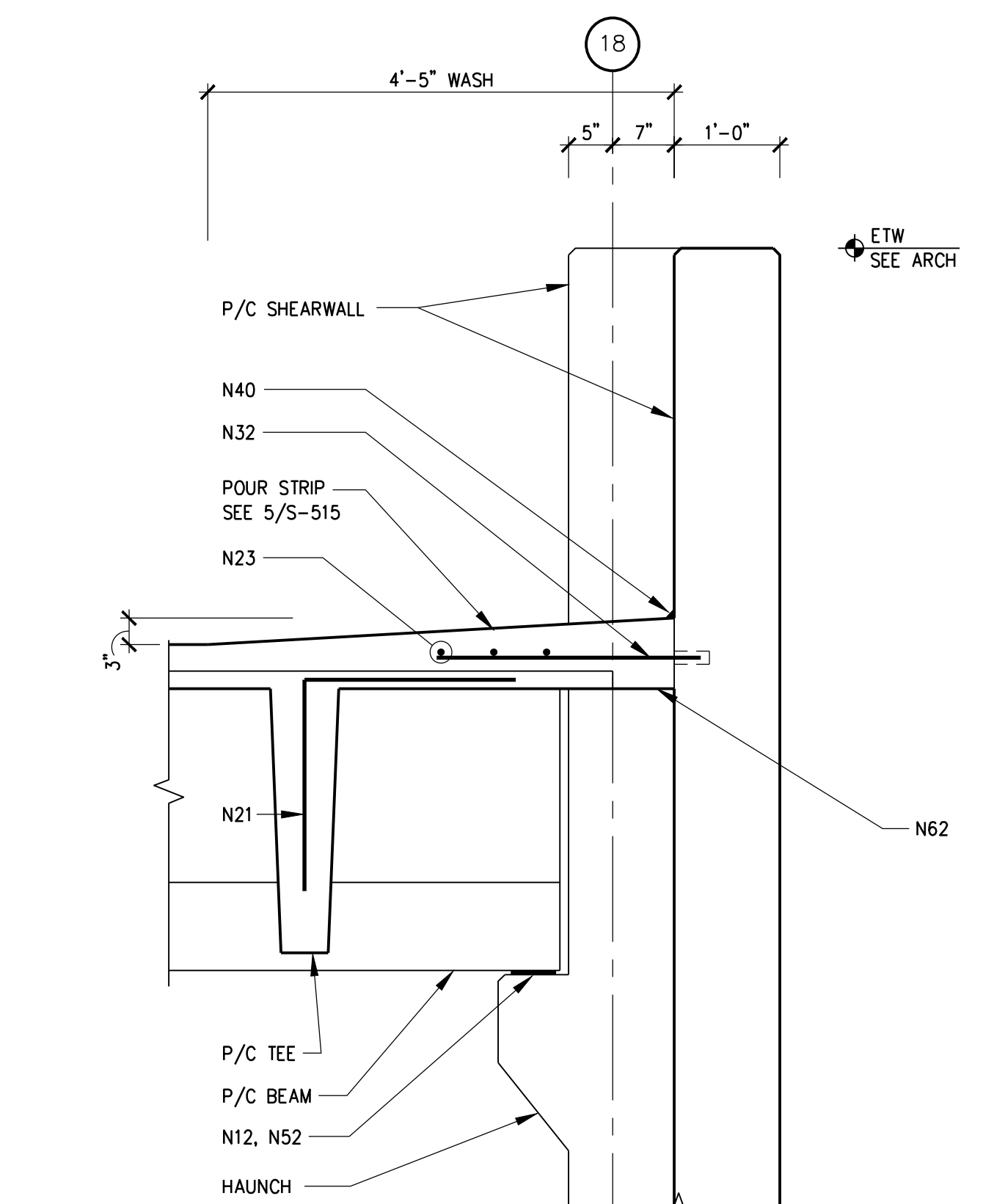
5 TEE/BAM DETAIL
SCALE: 3/4" = 1'-0"



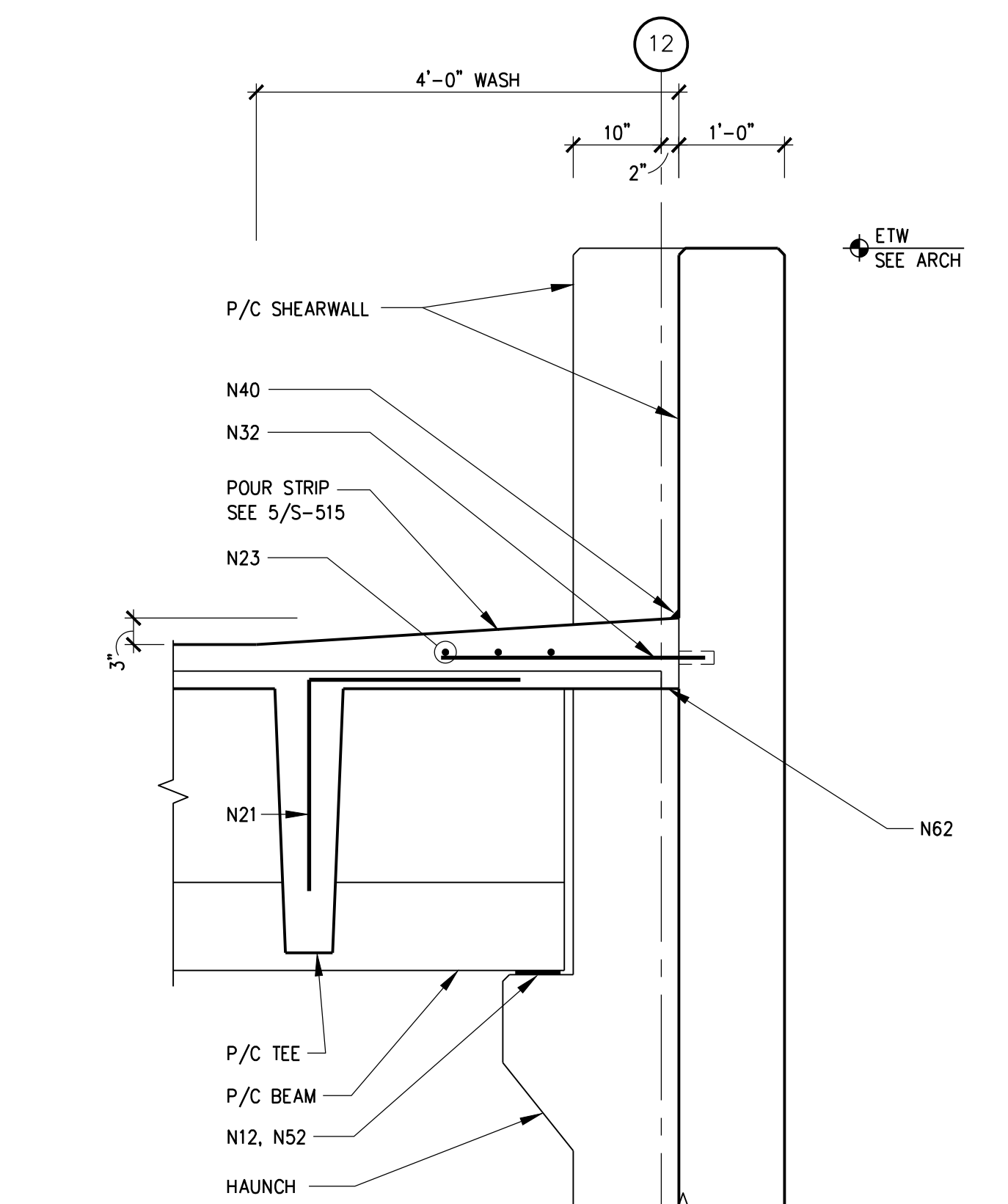
6 P/C BEAM/SHEARWALL DETAIL
SCALE: 3/4" = 1'-0"



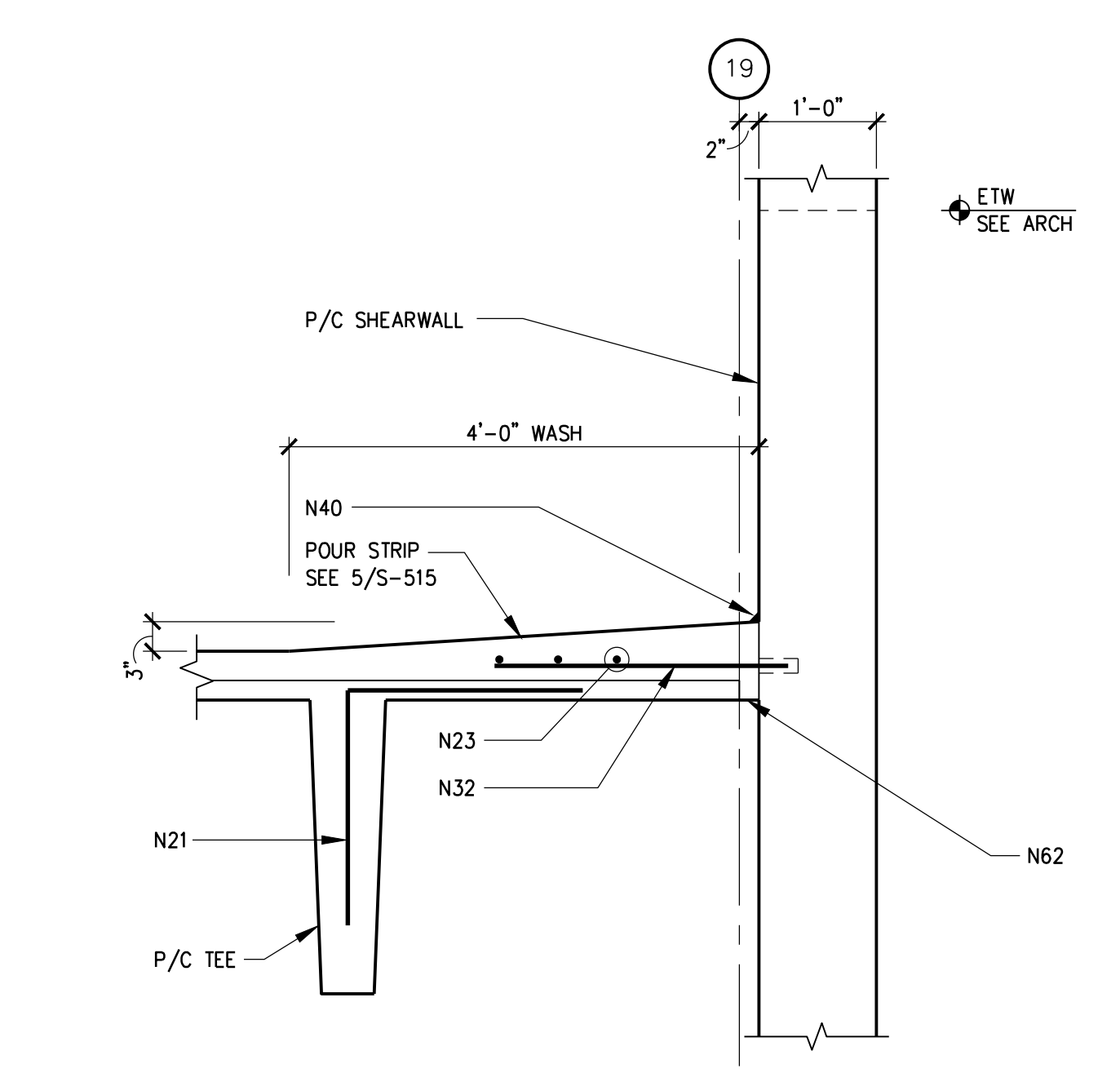
7 P/C BEAM/SHEARWALL DETAIL
SCALE: 3/4" = 1'-0"



8 TEE/BAM/SHEARWALL DETAIL
SCALE: 3/4" = 1'-0"



9 TEE/BAM/SHEARWALL DETAIL
SCALE: 3/4" = 1'-0"



10 TEE/SHEARWALL DETAIL
SCALE: 3/4" = 1'-0"

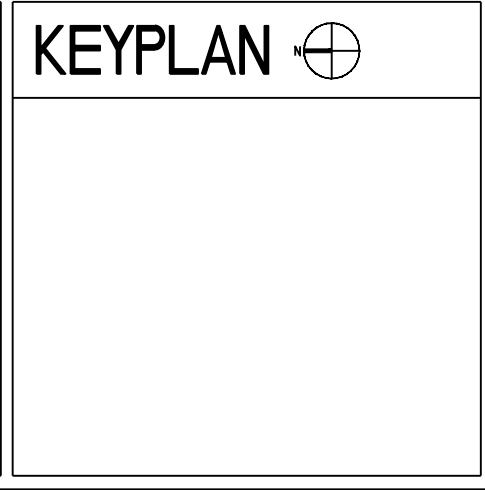
100% FINAL BID DOCUMENTS	08-18-2017
100% BID DOCUMENTS-NOT FOR CONSTRUCTION	07-24-2017
95% CONSTRUCTION DOCUMENTS SUBMISSION	06-15-2017
65% DESIGN DEVELOPMENT SUBMISSION	04-19-2017
35% SCHEMATIC DESIGN SUBMISSION	03-06-2017
Revisions:	Date

CONSULTANTS:

WALKER PARKING CONSULTANTS

MIDWESTERN CONSULTING

3815 Plaza Drive, Ann Arbor, Michigan 48106
(734) 995-0200 • www.midwesternconsulting.com
Land Development • Land Survey • Institutional • Municipal
Wireless Communications • Transportation • Landfill Services



ARCHITECT + ENGINEERS:

Bancroft

BANCROFT ARCHITECTS + ENGINEERS
VA CONTRACT NO. VA250-17-C-0008

700 Nicholas Blvd., Suite 300
Bk Grove Village, IL 60007
Telephone : 847.952.9362
www.bancroft-ae.com
Bancroft-AE Project No. 16-121

Drawing Title
STRUCTURAL DETAILS

Approved Project Director

Project Title
CONSTRUCT NORTH PARKING STRUCTURE

Location
ANN ARBOR, MICHIGAN

Date
08-18-2017

Checked
JBM

Drawn
KJW

Project Number
506-331

Building Number
29

Drawing Number
S-522

Office of
Construction
and Facilities
Management

Department of
Veterans Affairs