

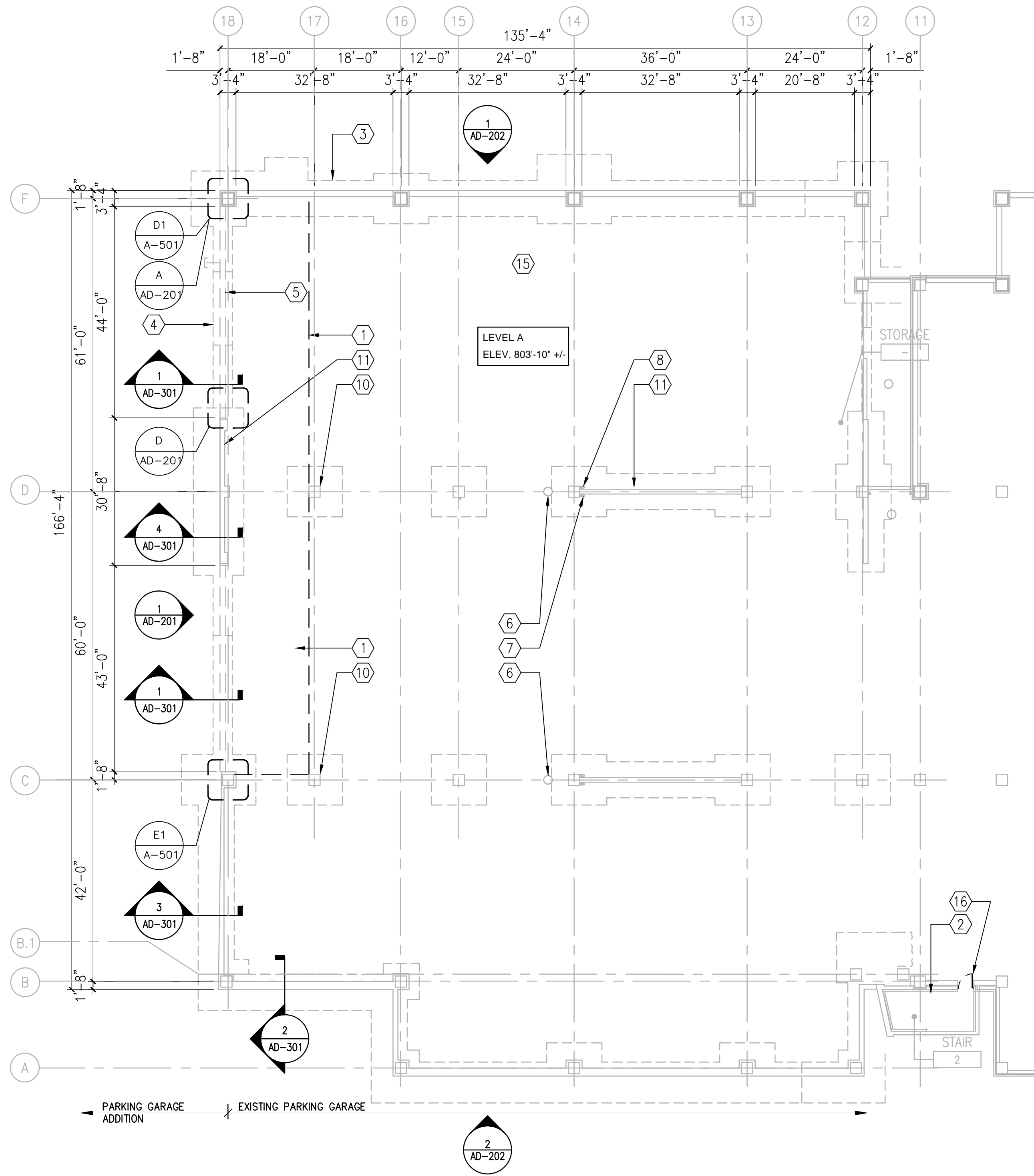
EXISTING BUILDING ISOMETRIC

GENERAL NOTES

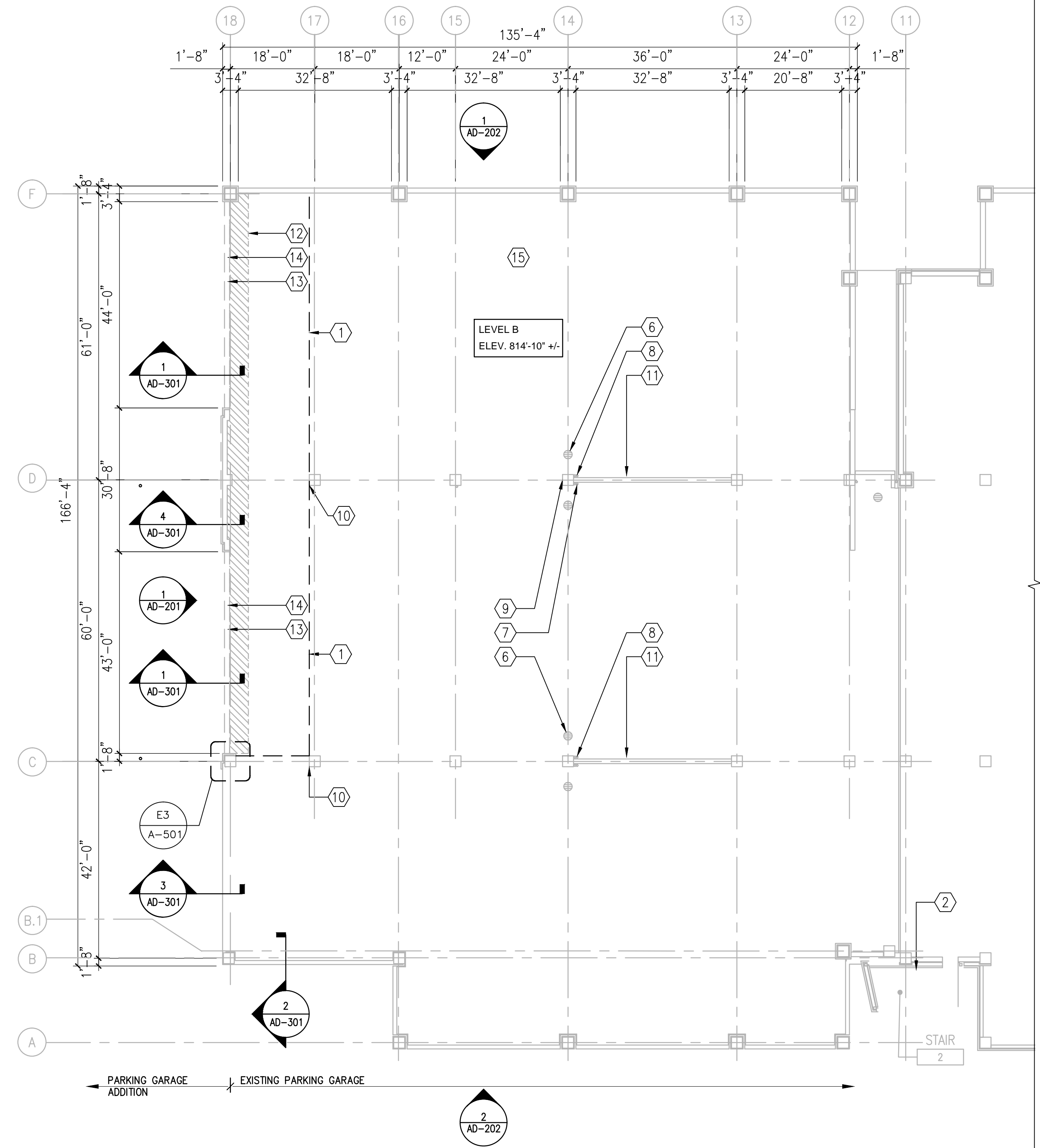
1. REFER TO SPECIFICATIONS DIVISION 01 GENERAL REQUIREMENTS.
2. REFER TO DRAWING G-004 FOR PROJECT CONSTRUCTION PHASING NOTES.
3. REFER TO STRUCTURAL DRAWING S-100 FOR FOUNDATION LEVEL PLAN AND RELATED SCOPE OF WORK ITEMS.
4. REFER TO DRAWINGS FP-1-1 THROUGH FP-105 FOR FIRE PROTECTION SYSTEMS AND RELATED SCOPE OF WORK ITEMS.
5. REFER TO DRAWINGS P-101 THROUGH P-105 FOR PLUMBING SYSTEMS AND RELATED SCOPE OF WORK ITEMS.
6. REFER TO ELECTRICAL DRAWINGS E-101 THROUGH E-105 AND EC-101 THROUGH EC-105 FOR ELECTRICAL SYSTEMS AND RELATED SCOPE OF WORK ITEMS.

DEMOLITION PLAN NOTES

1. PROVIDE TEMPORARY CONSTRUCTION BARRIERS AT EXISTING PARKING DECK LEVELS PRIOR TO STARTING DEMOLITION ACTIVITIES. REFER TO DRAWING AD-103 FOR TYPICAL TEMPORARY CONSTRUCTION BARRIERS DETAILS.
2. EXISTING STAIR UNIT WILL REMAIN ACTIVE AT ALL TIMES.
3. EXISTING CONCRETE FOUNDATION SYSTEM PROFILE LINES. REFER TO STRUCTURAL DRAWING S-101 FOR INFORMATION ON EXISTING ELEVATIONS.
4. EXISTING DRAIN TILE INSTALLED ALONG EXISTING EXTERIOR FOUNDATION WALL. FACE/LINE SHALL BE REMOVED. REFER TO PLUMBING DRAWING P-101 FOR ADDITIONAL NOTES.
5. EXISTING UNDERGROUND 12" STORM (ST) PIPING SYSTEM. REFER TO DRAWING P-101 FOR STORM PIPE INVERT ELEVATION AND REQUIRED WORK.
6. EXISTING FLOOR DRAINS TO REMAIN. PROTECT DURING CONSTRUCTION ACTIVITIES.
7. EXISTING SANITARY (SS) RISER TO REMAIN.
8. EXISTING STORM (ST) RISER TO REMAIN.
9. EXISTING WATER PIPING AND FROST PROOF HOSE BIBBS TO REMAIN.
10. EXISTING PRECAST CONCRETE COLUMNS.
11. EXISTING PRECAST CONCRETE SHEAR WALL.
12. REMOVE SECTION OF EXISTING CONCRETE TOPPING WITHIN HATCHED AREA DENOTED. REFER TO DRAWING AD-301 FOR TYPICAL DETAIL AND NOTES.
13. REMOVE EXISTING ALUMINUM RAILING SYSTEM AT EXISTING PRECAST CONCRETE SPANDREL PANELS INDICATED. REFER TO DETAIL SECTION 1/AD-301.
14. REMOVE EXISTING PRECAST CONCRETE SPANDREL PANELS AND RELATED STEEL FRAMING AND BRACING MEMBERS. REFER TO DETAIL SECTION 1/AD-301.
15. REFER TO DRAWING APD-101 AND APD-102 FOR EXISTING PAVEMENT MARKING MODIFICATION WORK.
16. REMOVE EXISTING DOOR AND FRAME.



1 LEVEL A DEMOLITION PLAN  
1/16"=1'-0"  
PLAN NORTH



2 LEVEL B DEMOLITION PLAN  
1/16"=1'-0"  
PLAN NORTH

<b>CONSULTANTS:</b>  WALKER PARKING CONSULTANTS 225 Andy Drive, Suite 1 Ann Arbor, MI 48108		<b>KEYPLAN</b>		<b>ARCHITECT + ENGINEERS:</b>  BANCROFT ARCHITECTS + ENGINEERS 700 Nicholas Blvd., Suite 300 Eli Grove Village, IL 60007 Telephone : 847.952.9342 www.bancroft-ae.com Bancroft-AE Project No. 14-121 VA CONTRACT NO. VA250-I7-C-0008		<b>Drawing Title</b> LEVELS A AND B - DEMOLITION PLANS  <b>Approved Project Director</b>		<b>Project Title</b> CONSTRUCT NORTH PARKING STRUCTURE  <b>Location</b> ANN ARBOR, MICHIGAN <b>Date</b> 08-18-2017 <b>Checked</b> EM <b>Drawn</b> AQ		<b>Project Number</b> 506-331 <b>Building Number</b> 29 <b>Drawing Number</b> AD-101		<b>Office of Construction and Facilities Management</b> 	
---	--	----------------	--	--	--	---	--	--	--	---	--	---	--