

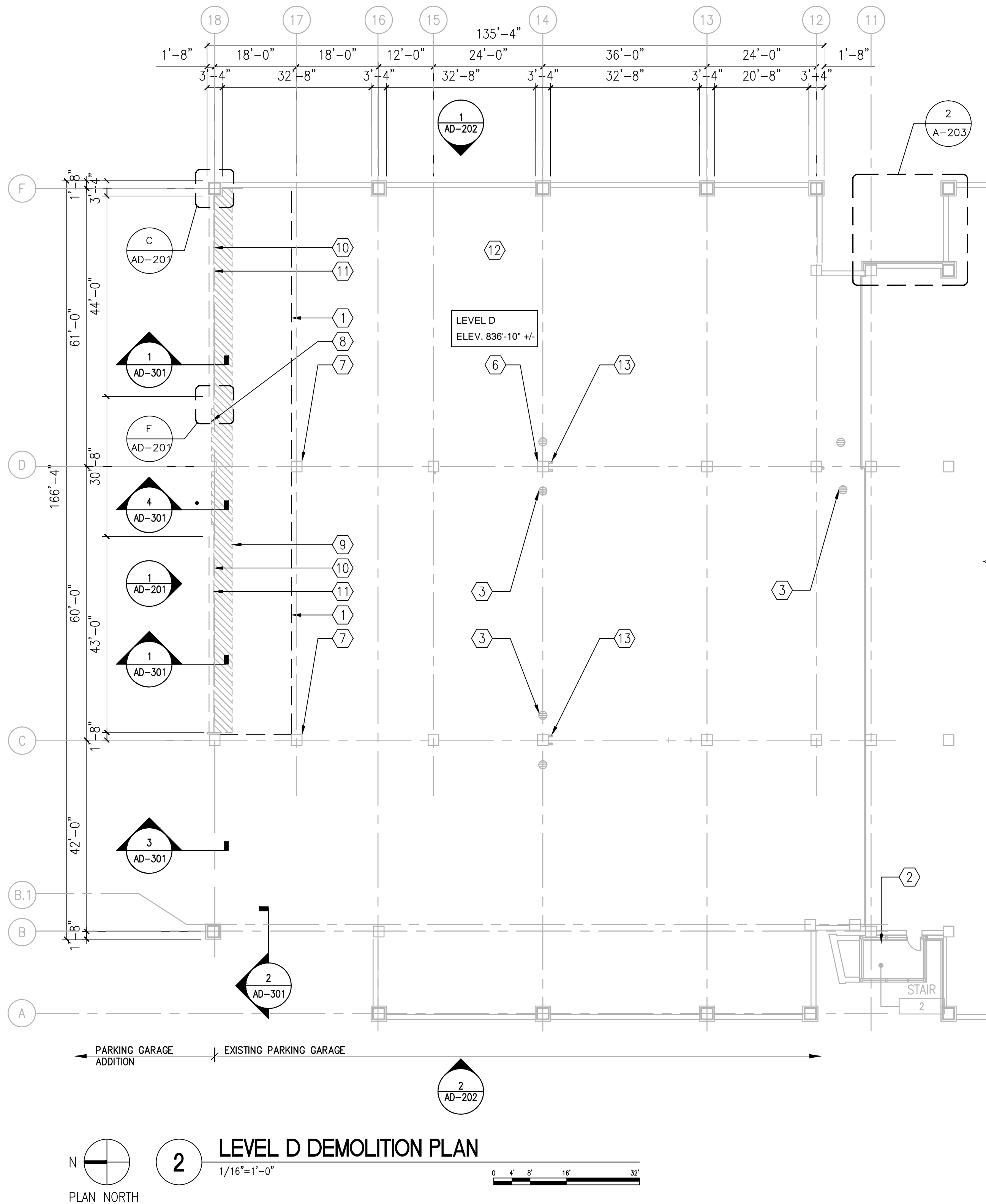
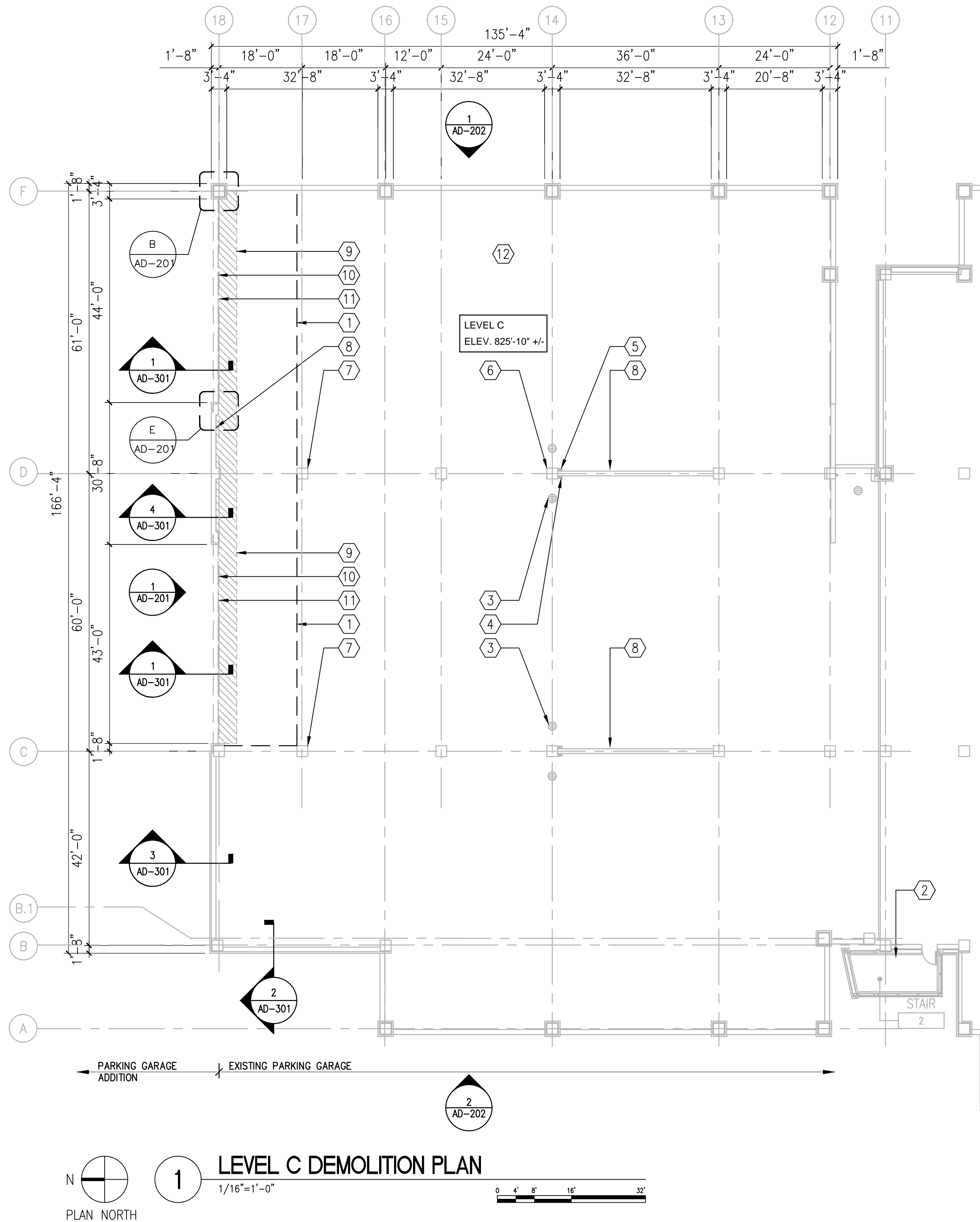
EXISTING BUILDING ISOMETRIC

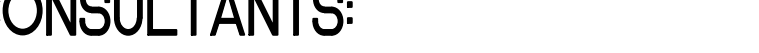

## GENERAL NOTES

1. REFER TO SPECIFICATIONS DIVISION 01 GENERAL REQUIREMENTS.
2. REFER TO DRAWING G-004 FOR PROJECT CONSTRUCTION PHASING NOTES.
3. REFER TO DRAWINGS FP-1-1 THROUGH FP-105 FOR FIRE PROTECTION SYSTEMS AND RELATED SCOPE OF WORK ITEMS.
4. REFER TO DRAWINGS P-101 THROUGH P-105 FOR PLUMBING SYSTEMS AND RELATED SCOPE OF WORK ITEMS.
5. REFER TO ELECTRICAL DRAWINGS E-101 THROUGH E-105 AND EC-101 THROUGH EC-105 FOR ELECTRICAL SYSTEMS AND RELATED SCOPE OF WORK ITEMS.

## DEMOLITION PLAN NOTES

1. PROVIDE TEMPORARY CONSTRUCTION BARRIERS AT EXISTING PARKING DECK LEVELS PRIOR TO STARTING DEMOLITION ACTIVITIES. REFER TO DRAWING AD-103 FOR TYPICAL TEMPORARY CONSTRUCTION BARRIERS DETAILS.
2. EXISTING STAIR UNIT WILL REMAIN ACTIVE AT ALL TIMES.
3. EXISTING FLOOR DRAINS TO REMAIN. PROTECT DURING CONSTRUCTION ACTIVITIES.
4. EXISTING SANITARY (SS) RISER TO REMAIN.
5. EXISTING STORM (ST) RISER TO REMAIN.
6. EXISTING WATER PIPING AND FROST PROOF HOSE BIBBS TO REMAIN.
7. EXISTING PRECAST CONCRETE COLUMNS.
8. EXISTING PRECAST CONCRETE SHEAR WALL.
9. REMOVE SECTION OF EXISTING CONCRETE TOPPING WITHIN HATCHED AREA DENOTED. REFER TO DRAWING AD-301 FOR TYPICAL DETAIL AND NOTES.
10. REMOVE EXISTING ALUMINUM RAILING SYSTEM AT EXISTING PRECAST CONCRETE SPANDREL PANELS INDICATED. REFER TO DETAIL SECTION 1/AD-301.
11. REMOVE EXISTING PRECAST CONCRETE SPANDREL PANELS AND RELATED STEEL FRAMING AND BRACING MEMBERS. REFER TO DETAIL SECTION 1/AD-301.
12. REFER TO DRAWING APD-101 AND APD-102 FOR EXISTING PAVEMENT MARKING MODIFICATION WORK.
13. REMOVE EXISTING LIGHT POLE, FIXTURES AND ASSOCIATED CONDUITS AND POWER WIRING.
14. REMOVE EXISTING LIGHTNING CABLEING SYSTEM, INCLUDING CABLES AND ASSOCIATED ANCHORS INDICATED.



		CONSULTANTS:		KEYPLAN		ARCHITECT + ENGINEERS:		Drawing Title		Project Title		Project Number		Office of Construction and Facilities Management  Department of Veterans Affairs	
						 BANCROFT ARCHITECTS + ENGINEERS 700 Nicholas Blvd., Suite 300 Elk Grove Village, IL 60007 Telephone : 847.952.9342 www.bancroft-ae.com Bancroft-AE Project No. 14-121		LEVELS C AND D - DEMOLITION PLANS		CONSTRUCT NORTH PARKING STRUCTURE		506-331			
100% FINAL BID DOCUMENTS		08-18-2017						Approved Project Director		Location		Drawing Number			
100% BID DOCUMENTS-NOT FOR CONSTRUCTION		07-24-2017						ANN ARBOR, MICHIGAN		AD-102					
95% CONSTRUCTION DOCUMENTS SUBMISSION		06-15-2017													
65% DESIGN DEVELOPMENT SUBMISSION		04-19-2017													
35% SCHEMATIC DESIGN SUBMISSION		03-06-2017													
Revisions:		Date													