

one eighth inch = one foot

one quarter inch = one foot

three eighths inch = one foot

one half inch = one foot

three quarters inch = one foot

one inch = one foot

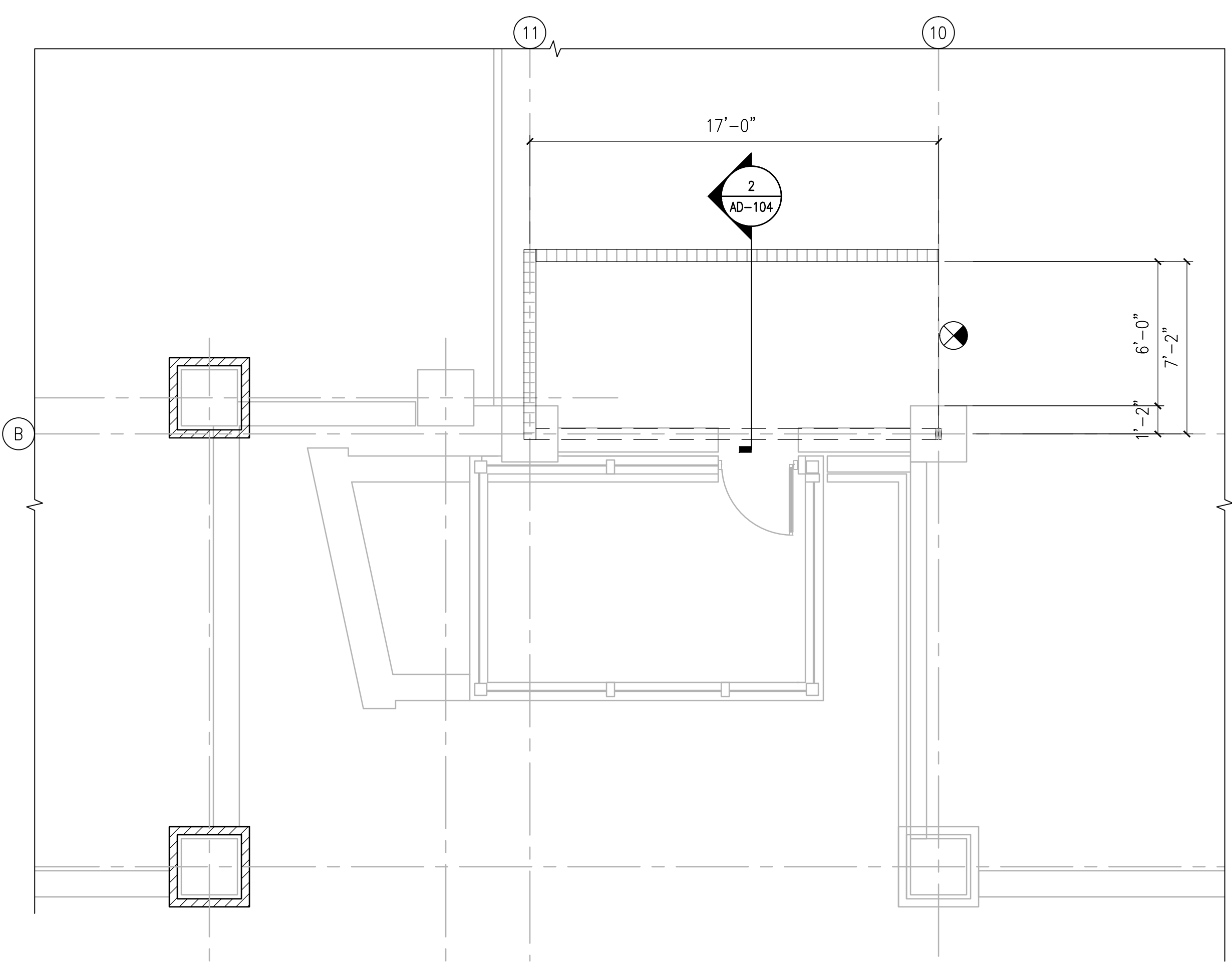
one and one half inches = one foot

three inches = one foot

K:\COC-PROJECTS\2016\16-121 - VA25116R0030 - Ann Arbor Parking Garage 506-331.dwg

8-16-17 01:07:46 PM

AD:garich



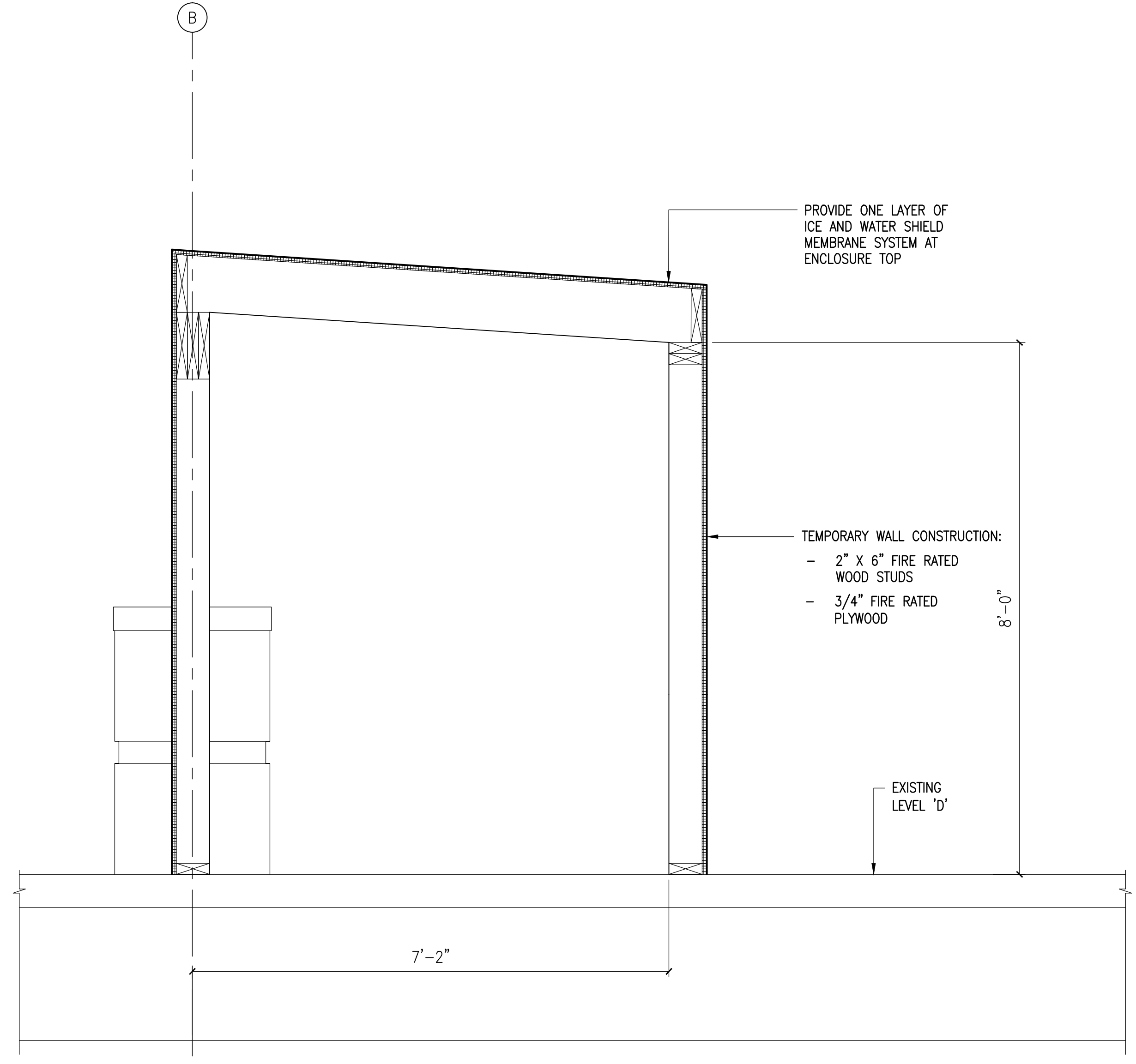
1

PLAN NORTH

LEVEL D - EXISTING STAIR 2 TEMPORARY BARRIER PLAN

1/4"=1'-0"

0 1' 2' 4' 6'

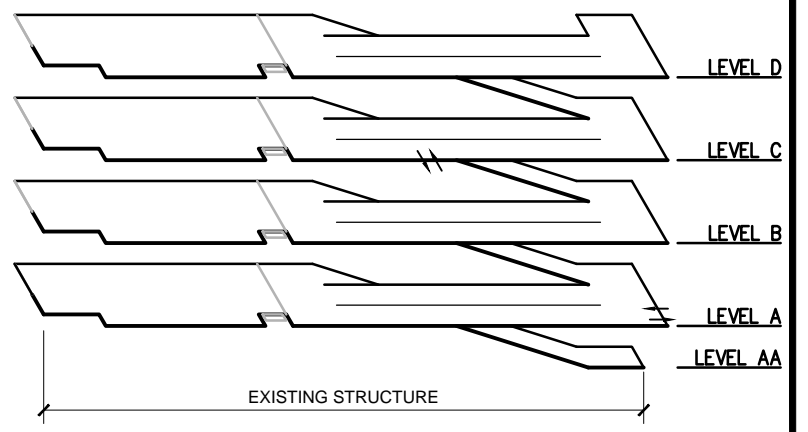


2

LEVEL D - EXISTING STAIR 2 TEMPORARY BARRIER SECTION

3/4"=1'-0"

0 1/2' 1' 2' 3'



EXISTING BUILDING ISOMETRIC

GENERAL NOTES

1. REFER TO SPECIFICATIONS DIVISION 01 GENERAL REQUIREMENTS.
2. REFER TO DRAWING G-004 FOR PROJECT CONSTRUCTION PHASING NOTES.
3. REFER TO STRUCTURAL DRAWING S-100 FOR FOUNDATION LEVEL PLAN AND RELATED SCOPE OF WORK ITEMS.
4. REFER TO DRAWINGS FP-1-1 THROUGH FP-105 FOR FIRE PROTECTION SYSTEMS AND RELATED SCOPE OF WORK ITEMS.
5. REFER TO DRAWINGS P-101 THROUGH P-105 FOR PLUMBING SYSTEMS AND RELATED SCOPE OF WORK ITEMS.
6. REFER TO ELECTRICAL DRAWINGS E-101 THROUGH E-105 AND EC-101 THROUGH EC-105 FOR ELECTRICAL SYSTEMS AND RELATED SCOPE OF WORK ITEMS.

TEMPORARY BARRIER PLAN NOTES

1. PROVIDE TEMPORARY CONSTRUCTION BARRIERS AT EXISTING PARKING DECK LEVELS PRIOR TO STARTING DEMOLITION ACTIVITIES. REFER TO DRAWING AD-103 FOR TYPICAL TEMPORARY CONSTRUCTION BARRIERS DETAILS.

100% FINAL BID DOCUMENTS08-18-2017

100% BID DOCUMENTS-NOT FOR CONSTRUCTION07-24-2017

95% CONSTRUCTION DOCUMENTS SUBMISSION06-15-2017

65% DESIGN DEVELOPMENT SUBMISSION04-19-2017

35% SCHEMATIC DESIGN SUBMISSION03-06-2017

RevisionsDate

WALKER PARKING CONSULTANTS

MIDWESTERN CONSULTING

KEYPLAN

ARCHITECT + ENGINEERS:

BANCROFT ARCHITECTS + ENGINEERS

Drawing Title
LEVEL D - EXISTING STAIR 2
TEMPORARY BARRIER PLAN AND SECTION

Approved Project Director

Drawing Title
CONSTRUCT NORTH
PARKING STRUCTURE

Location
ANN ARBOR, MICHIGAN

Date
08-18-2017

Checked
EM

Drawn
AQ

Project Number
506-331

Building Number
29

Drawing Number
AD-104

Office of
Construction
and Facilities
Management

Department of
Veterans Affairs

700 Nicholas Blvd., Suite 300
Eli Grove Village, IL 60007
Telephone : 847.952.9342
www.bancroft-ae.com
Bancroft-AE Project No. 16-121

3815 Plaza Drive Ann Arbor, Michigan 48108
(734) 995-0200 • www.midwesternconsulting.com
Land Development • Land Survey • Institutional • Municipal
Wireless Communications • Transportation • Landfill Services

225 Andy Drive, Suite 1
Ann Arbor, MI 48108

VA CONTRACT NO. VA250-17-C-0008

VA FORM 08-6231