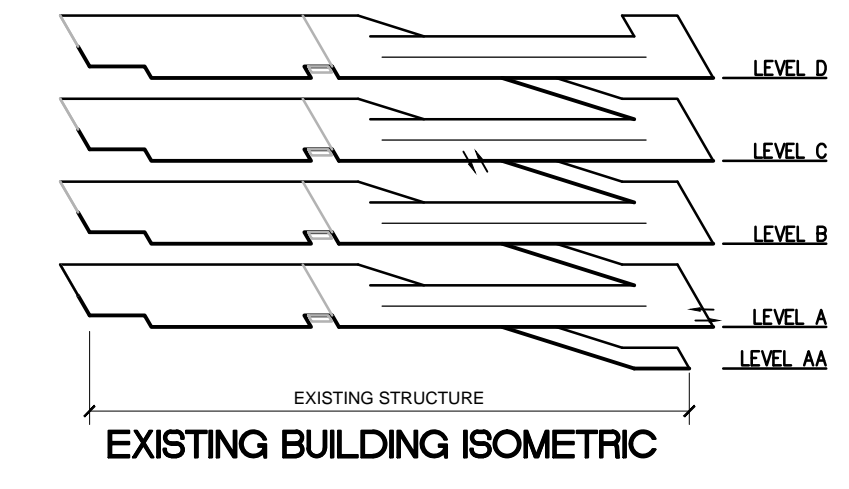
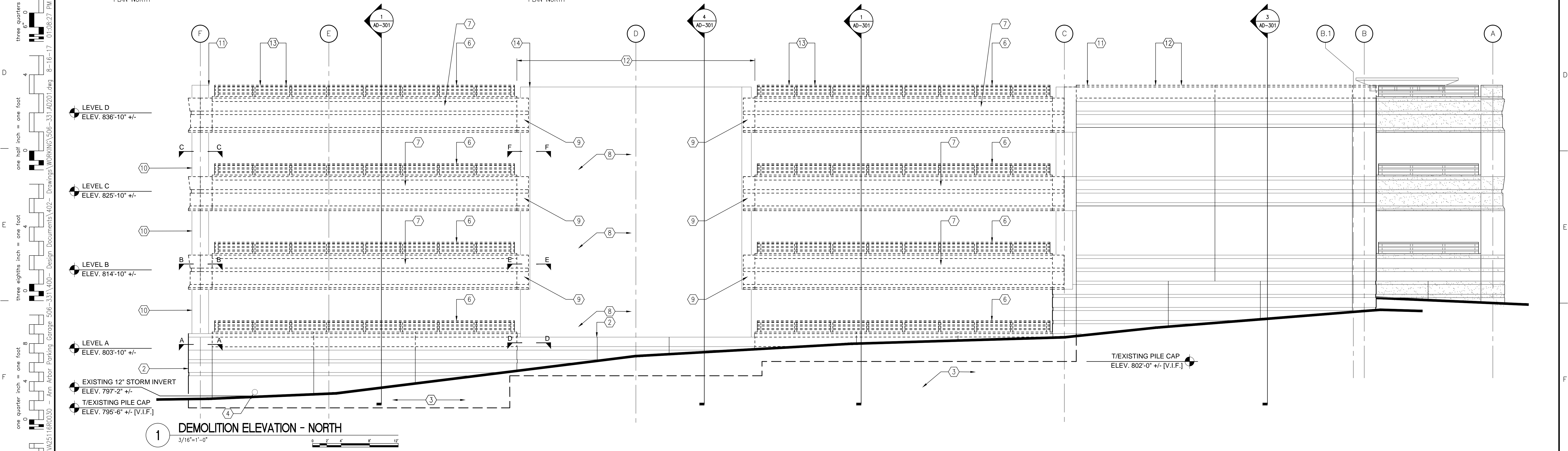


- ### DEMOLITION NOTES
1. PROVIDE TEMPORARY CONSTRUCTION BARRIERS AT EXISTING PARKING DECK LEVELS PRIOR TO STARTING DEMOLITION ACTIVITIES. REFER TO DRAWING AD-103 FOR TYPICAL TEMPORARY CONSTRUCTION BARRIERS DETAILS.
  2. EXISTING CONCRETE FOUNDATION SYSTEM PROFILE LINES. REFER TO STRUCTURAL DRAWING S-101 FOR INFORMATION ON EXISTING ELEVATIONS.
  3. EXISTING DRAIN TILE INSTALLED ALONG EXISTING EXTERIOR FOUNDATION WALL FACE/LINE SHALL BE REMOVED. REFER TO PLUMBING DRAWING P-101 FOR ADDITIONAL NOTES.
  4. EXISTING UNDERGROUND 12" STORM (ST) PIPING SYSTEM. REFER TO DRAWING P-101 FOR STORM PIPE INVERT ELEVATION AND REQUIRED WORK.
  5. EXISTING PRECAST CONCRETE SHEAR WALL.
  6. REMOVE EXISTING ALUMINUM RAILING SYSTEM AT EXISTING PRECAST CONCRETE SPANDREL PANELS INDICATED. REFER TO DETAIL SECTION 1/AD-301.
  7. REMOVE EXISTING PRECAST CONCRETE SPANDREL PANELS AND RELATED STEEL FRAMING AND BRACING MEMBERS. REFER TO DETAIL SECTION 1/AD-301.
  8. EXISTING CONCRETE SHEAR WALL CONSTRUCTION TO REMAIN.
  9. REFER TO DRAWING A-501 FOR DETAIL ON INFILLING VOID SPACE AT EXISTING PRECAST CONCRETE SPANDREL BEAM POCKETS.
  10. EXISTING PRECAST CONCRETE COLUMN.
  11. REMOVE EXISTING PRECAST CONCRETE WALL PANEL AND COPINGS AT THESE COLUMN ENCLOSURES, TYPICAL FOR ALL COLUMNS AT EXISTING PARKING DECK LEVEL D.
  12. REMOVE EXISTING PRECAST CONCRETE CAST STONE BAND AND COPINGS AT THIS WALL AREA. APPROXIMATE LENGTH IS 33'-0".
  13. REMOVE COPPER LIGHTNING PROTECTION CABLING SYSTEM ALONG PERIMETER OF EXISTING PARKING GARAGE AT LEVEL D. REFER TO DRAWING E-106 FOR ADDITIONAL INFORMATION.
  14. CONTRACTOR SHALL NOTE THAT COPPER LIGHTNING PROTECTION CABLING IS INSTALLED BEHIND THE FACE BRICK VENEER WALL CONSTRUCTION. CONTRACTOR SHALL REMOVE AND REINSTALL AS REQUIRED BY FIELD CONDITIONS.



- ### GENERAL NOTES
1. REFER TO SPECIFICATIONS DIVISION 01 GENERAL REQUIREMENTS.
  2. REFER TO DRAWING G-004 FOR PROJECT CONSTRUCTION PHASING NOTES.
  3. REFER TO STRUCTURAL DRAWING S-100 FOR FOUNDATION LEVEL PLAN AND RELATED SCOPE OF WORK ITEMS.
  4. REFER TO SPECIFICATIONS, APPENDIX D FOR EXISTING LIGHTNING PROTECTION SYSTEM - PHOTO INDEX AT EXISTING PARKING GARAGE LEVEL D.



<b>CONSULTANTS:</b>  WALKER PARKING CONSULTANTS 322 Auto Drive, Suite 1 Ann Arbor, MI 48106		<b>KEYPLAN</b>		<b>ARCHITECT + ENGINEERS:</b>  BANCROFT ARCHITECTS + ENGINEERS 700 Nicholas Blvd., Suite 300 Elk Grove Village, IL 60007 Telephone: 847.252.2342 www.bancroft-ae.com Bancroft-AE Project No. 16-121		<b>Drawing Title</b> DEMOLITION ELEVATION		<b>Project Title</b> CONSTRUCT NORTH PARKING STRUCTURE		<b>Project Number</b> 506-331		<b>Office of Construction and Facilities Management</b> 
<b>100% FINAL BID DOCUMENTS</b> 08-18-2017 <b>100% BID DOCUMENTS-NOT FOR CONSTRUCTION</b> 07-24-2017 <b>95% CONSTRUCTION DOCUMENTS SUBMISSION</b> 06-15-2017 <b>65% DESIGN DEVELOPMENT SUBMISSION</b> 04-19-2017 <b>35% SCHEMATIC DESIGN SUBMISSION</b> 03-06-2017 <b>Revisions:</b> Date						<b>Approved: Project Director</b>		<b>Location</b> ANN ARBOR, MICHIGAN		<b>Building Number</b> 29		
								<b>Date</b> 08-18-2017		<b>Drawing Number</b> AD-201		