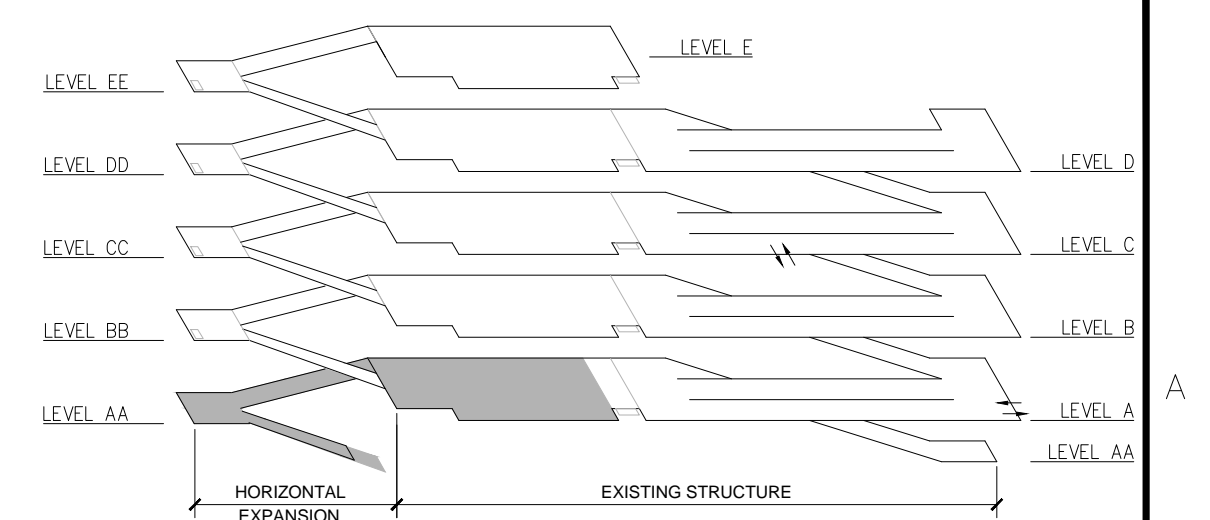
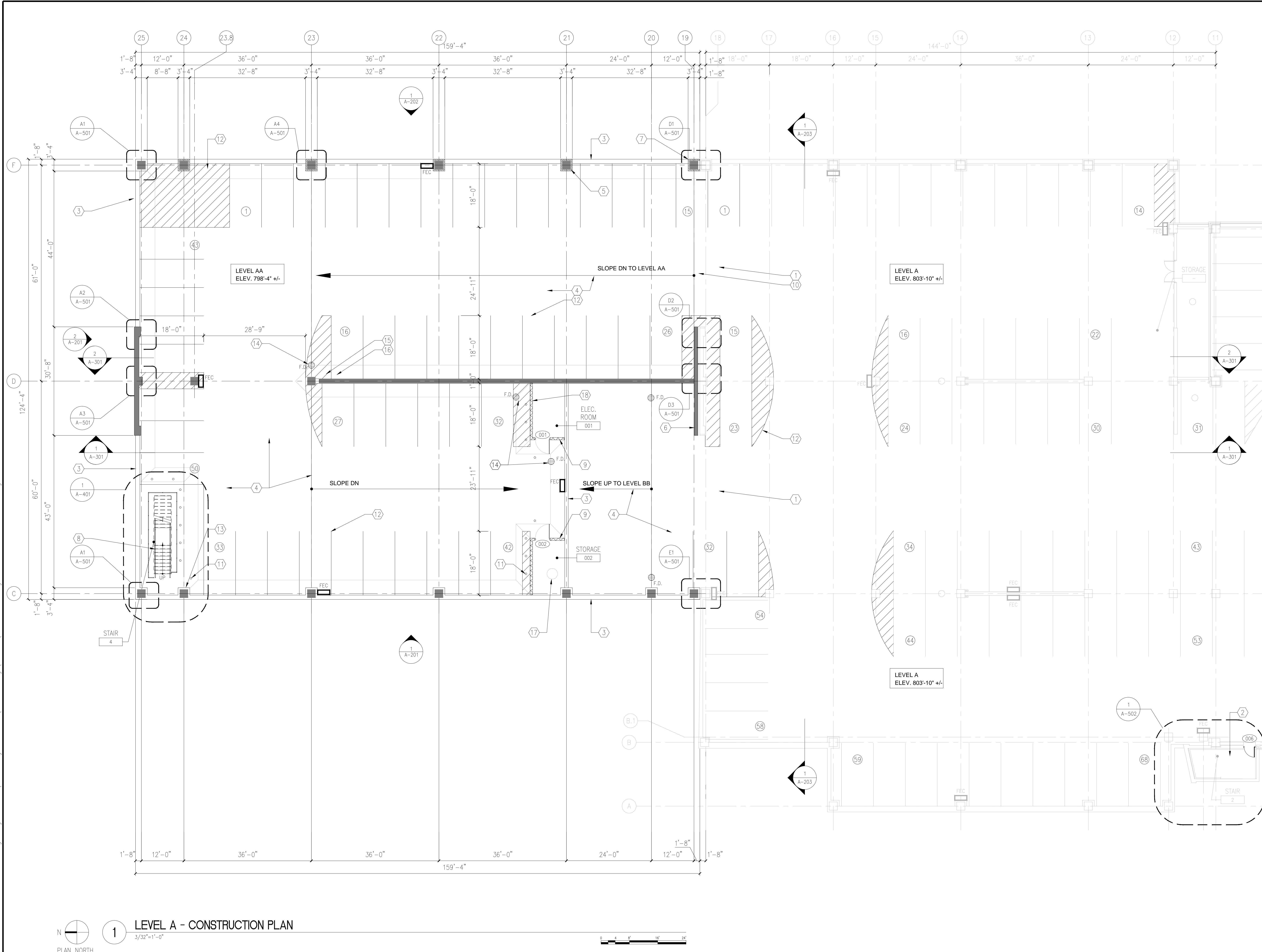


three eighths inch = one foot
one eighth inch = one foot
one quarter inch = one foot
one half inch = one foot
three quarters inch = one foot
one inch = one foot
one and one half inches = one foot
two inches = one foot
three inches = one foot
four inches = one foot
five inches = one foot
six inches = one foot
seven inches = one foot
eight inches = one foot
nine inches = one foot
ten inches = one foot
eleven inches = one foot
twelve inches = one foot
thirteen inches = one foot
fourteen inches = one foot
fifteen inches = one foot
sixteen inches = one foot
seventeen inches = one foot
eighteen inches = one foot
nineteen inches = one foot
twenty inches = one foot
twenty one inches = one foot
twenty two inches = one foot
twenty three inches = one foot
twenty four inches = one foot
twenty five inches = one foot
twenty six inches = one foot
twenty seven inches = one foot
twenty eight inches = one foot
twenty nine inches = one foot
thirty inches = one foot
thirty one inches = one foot
thirty two inches = one foot
thirty three inches = one foot
thirty four inches = one foot
thirty five inches = one foot
thirty six inches = one foot
thirty seven inches = one foot
thirty eight inches = one foot
thirty nine inches = one foot
forty inches = one foot
forty one inches = one foot
forty two inches = one foot
forty three inches = one foot
forty four inches = one foot
forty five inches = one foot
forty six inches = one foot
forty seven inches = one foot
forty eight inches = one foot
forty nine inches = one foot
fifty inches = one foot
fifty one inches = one foot
fifty two inches = one foot
fifty three inches = one foot
fifty four inches = one foot
fifty five inches = one foot
fifty six inches = one foot
fifty seven inches = one foot
fifty eight inches = one foot
fifty nine inches = one foot
sixty inches = one foot
sixty one inches = one foot
sixty two inches = one foot
sixty three inches = one foot
sixty four inches = one foot
sixty five inches = one foot
sixty six inches = one foot
sixty seven inches = one foot
sixty eight inches = one foot
sixty nine inches = one foot
seventy inches = one foot
seventy one inches = one foot
seventy two inches = one foot
seventy three inches = one foot
seventy four inches = one foot
seventy five inches = one foot
seventy six inches = one foot
seventy seven inches = one foot
seventy eight inches = one foot
seventy nine inches = one foot
eighty inches = one foot
eighty one inches = one foot
eighty two inches = one foot
eighty three inches = one foot
eighty four inches = one foot
eighty five inches = one foot
eighty six inches = one foot
eighty seven inches = one foot
eighty eight inches = one foot
eighty nine inches = one foot
ninety inches = one foot
ninety one inches = one foot
ninety two inches = one foot
ninety three inches = one foot
ninety four inches = one foot
ninety five inches = one foot
ninety six inches = one foot
ninety seven inches = one foot
ninety eight inches = one foot
ninety nine inches = one foot
one hundred inches = one foot



BUILDING ISOMETRIC

GENERAL NOTES

- 1. REFER TO SPECIFICATIONS DIVISION 01 GENERAL REQUIREMENTS.
- 2. REFER TO DRAWING G-004 FOR PROJECT CONSTRUCTION PHASING NOTES.
- 3. REFER TO DRAWING S-100 THROUGH S-105 FOR STRUCTURAL FRAMING PLANS AND RELATED SCOPE OF WORK ITEMS.
- 4. REFER TO DRAWINGS FP-101 THROUGH FP-105 FOR FIRE PROTECTION SYSTEMS AND RELATED SCOPE OF WORK ITEMS.
- 5. REFER TO DRAWINGS P-101 THROUGH P-105 FOR PLUMBING SYSTEMS AND RELATED SCOPE OF WORK ITEMS.
- 6. REFER TO ELECTRICAL DRAWINGS E-101 THROUGH E-105 AND EC-101 THROUGH EC-105 FOR ELECTRICAL SYSTEMS AND RELATED SCOPE OF WORK ITEMS.

CONSTRUCTION PLAN NOTES

- 1. PROVIDE TEMPORARY CONSTRUCTION BARRIERS AT EXISTING PARKING DECK LEVELS. REFER TO DRAWING AD-103 FOR TYPICAL TEMPORARY CONSTRUCTION BARRIERS DETAILS.
- 2. EXISTING STAIR UNIT WILL REMAIN ACTIVE AT ALL TIMES.
- 3. POURED IN PLACE CONCRETE FOUNDATION WALLS. REFER TO DRAWING S-100.
- 4. CONCRETE FLOOR SLAB AT LEVEL A/AA WILL BE POURED IN PLACE ON COMPACTED STONE BASE. REFER TO DRAWING S-101 FOR SPECIFICATION/DETAILS.
- 5. PRECAST CONCRETE COLUMNS.
- 6. PRECAST CONCRETE SHEAR WALL.
- 7. NOMINAL 4" FACE BRICK AND PRECAST CONCRETE COLUMNS. REFER TO DETAIL ON DRAWING A-501.
- 8. PRECAST CONCRETE STAIR UNIT AND IRON PIPE RAILING SYSTEM. REFER TO DRAWINGS A-401 AND A-504.
- 9. CONCRETE MASONRY UNIT WALL SYSTEM. REFER TO DRAWING A-402 FOR ENLARGED SCALE DETAIL PLANS.
- 10. NEW SLAB. REFER TO DRAWING S-101.
- 11. STEEL PIPE BOLLARDS. REFER TO DRAWINGS A-404 AND AP-101.
- 12. REFER TO DRAWING AP-101 FOR PAVEMENT MARKING DETAILS.
- 13. DRY STAND PIPE RISER AND FIRE DEPARTMENT HOSE CONNECTION. REFER TO DRAWING FP-101.
- 14. FLOOR DRAINS. REFER TO DRAWING P-101.
- 15. SANITARY (SS) RISER. REFER TO DRAWING P-101.
- 16. STORM (ST) RISER. REFER TO DRAWING P-101.
- 17. SANITARY BASIN/STRUCTURE WITH DUAL PUMPS. REFER TO DRAWING P-101.
- 18. ELECTRIC PANELBOARD. REFER TO DRAWING E-101.

PARKING SPACE SUMMARY		
DESCRIPTION	EXPANSION 2	EXPANSION 1
LEVEL A/AA	50	68

NOTE: SEE AP-101 FOR OVERALL GARAGE PARKING TOTALS

1 LEVEL A - CONSTRUCTION PLAN
3/32"=1'-0"

100% FINAL BID DOCUMENTS 08-18-2017

100% BID DOCUMENTS-NOT FOR CONSTRUCTION 07-24-2017

95% CONSTRUCTION DOCUMENTS SUBMISSION 06-15-2017

65% DESIGN DEVELOPMENT SUBMISSION 04-19-2017

35% SCHEMATIC DESIGN SUBMISSION 03-06-2017

Revisions: Date

MIDWESTERN CONSULTING

3815 Plaza Drive Ann Arbor, Michigan 48108
(734) 995-0200 • www.midwesternconsulting.com

Land Development • Land Survey • Institutional • Municipal
Wireless Communications • Transportation • Landfill Services

KEYPLAN

ARCHITECT + ENGINEERS:

BANCROFT ARCHITECTS + ENGINEERS

700 Nicholas Blvd., Suite 300
Bk Grove Village, IL 60007
Telephone: 847.952.9362

www.bancroft-ae.com
Bancroft-AE Project No. 16-121

VA CONTRACT NO. VA250-17-C-0008

Drawing Title
LEVEL A - CONSTRUCTION PLAN

Approved Project Director

Project Title
CONSTRUCT NORTH PARKING STRUCTURE

Location
ANN ARBOR, MICHIGAN

Date
08-18-2017

Checked
EM

Drawn
AG

Project Number
506-331

Building Number
29

Drawing Number
A-101

Office of Construction and Facilities Management

Department of Veterans Affairs