

BUILDING ISOMETRIC

GENERAL NOTES

- REFER TO SPECIFICATIONS DIVISION 01 GENERAL REQUIREMENTS.
- REFER TO DRAWING G-004 FOR PROJECT CONSTRUCTION PHASING NOTES.
- REFER TO DRAWING S-100 THROUGH S-105 FOR STRUCTURAL FRAMING PLANS AND RELATED SCOPE OF WORK ITEMS.
- REFER TO DRAWINGS FP-101 THROUGH FP-105 FOR FIRE PROTECTION SYSTEMS AND RELATED SCOPE OF WORK ITEMS.
- REFER TO DRAWINGS P-101 THROUGH P-105 FOR PLUMBING SYSTEMS AND RELATED SCOPE OF WORK ITEMS.
- REFER TO ELECTRICAL DRAWINGS E-101 THROUGH E-105 AND EC-101 THROUGH EC-105 FOR ELECTRICAL SYSTEMS AND RELATED SCOPE OF WORK ITEMS.

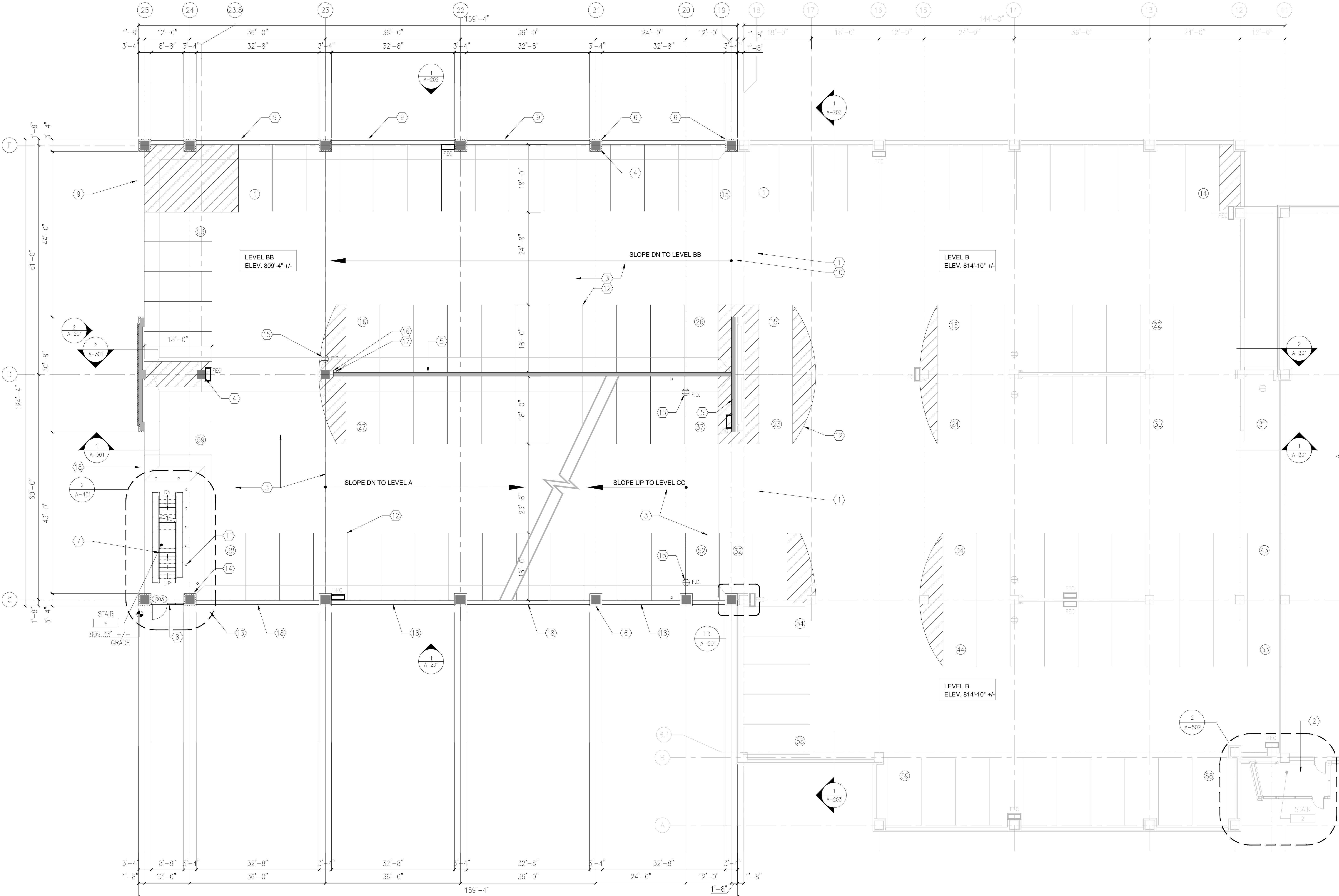
CONSTRUCTION PLAN NOTES

- PROVIDE TEMPORARY CONSTRUCTION BARRIERS AT EXISTING PARKING DECK LEVELS. REFER TO DRAWING AD-103 FOR TYPICAL TEMPORARY CONSTRUCTION BARRIERS DETAILS.
- EXISTING STAIR UNIT WILL REMAIN ACTIVE AT ALL TIMES.
- PARKING DECK AT LEVEL B/BB WILL BE PRECAST CONCRETE DOUBLE TEE MEMBERS. REFER TO DRAWING S-102 FOR SPECIFICATION/DETAILS.
- PRECAST CONCRETE COLUMNS.
- PRECAST CONCRETE SHEAR WALL.
- NOMINAL 4" FACE BRICK AND PRECAST CONCRETE COLUMNS. REFER TO DETAIL ON DRAWING A-501.
- PRECAST CONCRETE STAIR UNIT AND IRON PIPE RAILING SYSTEM. REFER TO DRAWINGS A-401 AND A-504.
- ALUMINUM STORE FRONT SYSTEM. REFER TO DRAWING A-801.
- PRECAST CONCRETE SPANDREL WALL SYSTEM WITH ALUMINUM RAILINGS.
- EXPANSION JOINT SYSTEM. REFER TO DRAWING S-515.
- STEEL PIPE BOLLARDS. REFER TO DRAWINGS A-404 AND AP-101.
- REFER TO DRAWING AP-101 FOR PAVEMENT MARKING DETAILS.
- FIRE DEPARTMENT CONNECTION, THREE-WAY HOSE CONNECTION. REFER TO DRAWING FP-102.
- DRY STAND PIPE RISER AND FIRE DEPARTMENT HOSE CONNECTION. REFER TO DRAWING FP-102.
- FLOOR DRAINS. REFER TO DRAWING P-102.
- SANITARY (SS) RISER. REFER TO DRAWING P-102.
- STORM (ST) RISER. REFER TO DRAWING P-102.
- CAST IN PLACE CONCRETE FOUNDATION WALLS. REFER TO DRAWING S-101.

PARKING SPACE SUMMARY

DESCRIPTION	EXPANSION 2	EXPANSION 1
LEVEL B/BB	59	68

NOTE: SEE AP-101 FOR OVERALL GARAGE PARKING TOTALS



1 LEVEL B - CONSTRUCTION PLAN



100% FINAL BID DOCUMENTS 08-18-2017

100% BID DOCUMENTS-NOT FOR CONSTRUCTION 07-24-2017

95% CONSTRUCTION DOCUMENTS SUBMISSION 06-15-2017

65% DESIGN DEVELOPMENT SUBMISSION 04-19-2017

35% SCHEMATIC DESIGN SUBMISSION 03-06-2017

Revisions: Date

MIDWESTERN CONSULTING

3815 Plaza Drive Ann Arbor, Michigan 48108
(734) 995-0200 • www.midwesternconsulting.com

Land Development • Land Survey • Institutional • Municipal
Wireless Communications • Transportation • Landfill Services

KEYPLAN

ARCHITECT + ENGINEERS:

BANCROFT ARCHITECTS + ENGINEERS

700 Nicholas Blvd., Suite 300
Eli Grove Village, IL 60007
Telephone : 847.952.9342

www.bancroft-ae.com
Bancroft-AE Project No. 14-121

Drawing Title

LEVEL B - CONSTRUCTION PLAN

Approved Project Director

Project Title

CONSTRUCT NORTH PARKING STRUCTURE

Location

ANN ARBOR, MICHIGAN

Date

08-18-2017

Checked

EM

Drawn

AG

Project Number

506-331

Building Number

29

Drawing Number

A-102

Office of Construction and Facilities Management