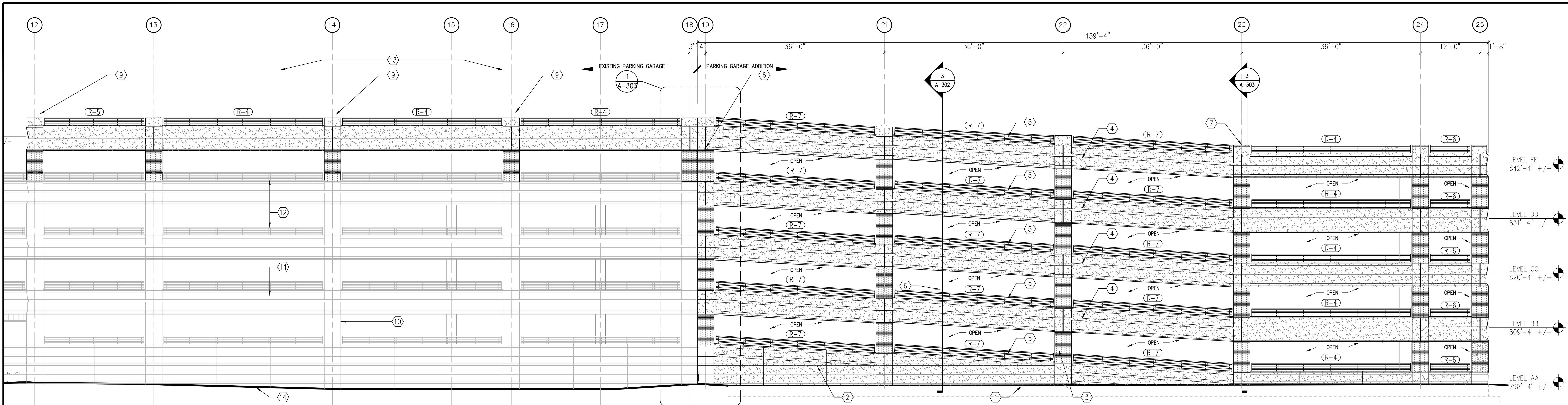
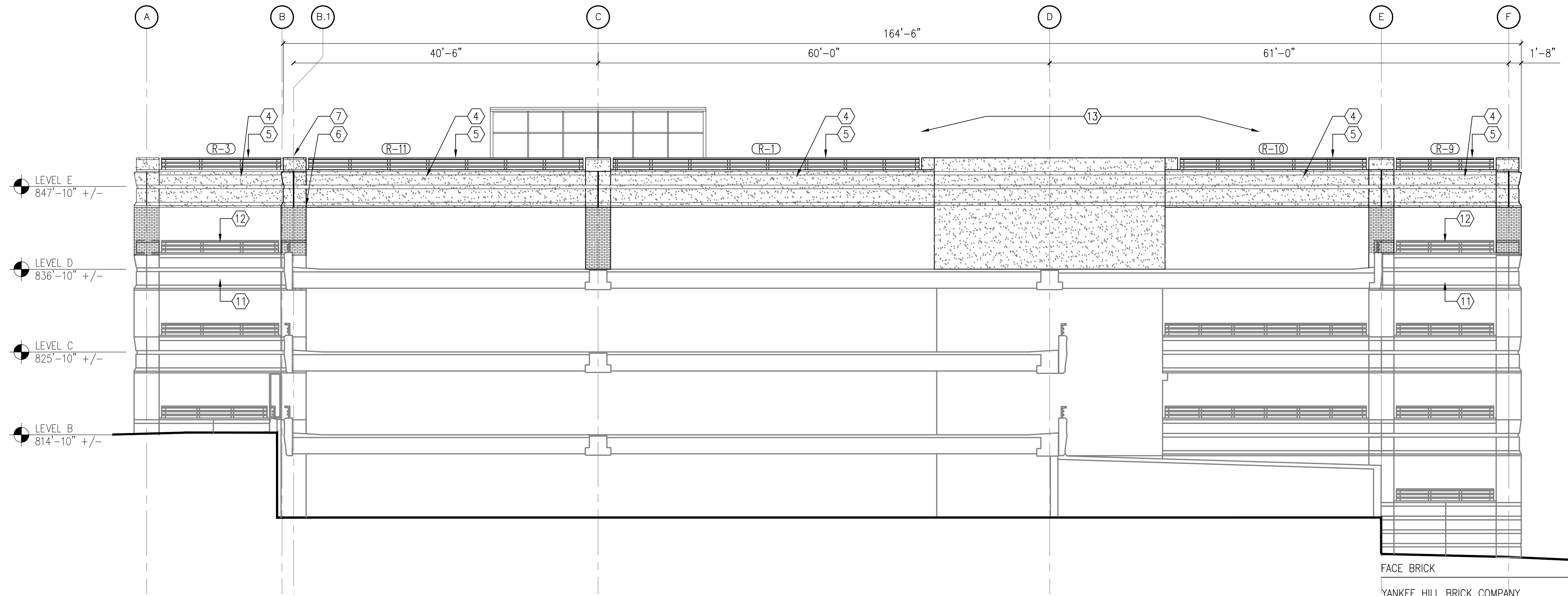


one eighth inch = one foot  
one quarter inch = one foot  
three eighths inch = one foot  
one half inch = one foot  
three quarters inch = one foot  
one inch = one foot  
one and one half inches = one foot  
two inches = one foot  
three inches = one foot  
four inches = one foot  
five inches = one foot  
six inches = one foot  
seven inches = one foot  
eight inches = one foot  
nine inches = one foot  
ten inches = one foot  
eleven inches = one foot  
twelve inches = one foot  
thirteen inches = one foot  
fourteen inches = one foot  
fifteen inches = one foot  
sixteen inches = one foot  
seventeen inches = one foot  
eighteen inches = one foot  
nineteen inches = one foot  
twenty inches = one foot  
twenty one inches = one foot  
twenty two inches = one foot  
twenty three inches = one foot  
twenty four inches = one foot  
twenty five inches = one foot  
twenty six inches = one foot  
twenty seven inches = one foot  
twenty eight inches = one foot  
twenty nine inches = one foot  
thirty inches = one foot  
thirty one inches = one foot  
thirty two inches = one foot  
thirty three inches = one foot  
thirty four inches = one foot  
thirty five inches = one foot  
thirty six inches = one foot  
thirty seven inches = one foot  
thirty eight inches = one foot  
thirty nine inches = one foot  
forty inches = one foot  
forty one inches = one foot  
forty two inches = one foot  
forty three inches = one foot  
forty four inches = one foot  
forty five inches = one foot  
forty six inches = one foot  
forty seven inches = one foot  
forty eight inches = one foot  
forty nine inches = one foot  
fifty inches = one foot  
fifty one inches = one foot  
fifty two inches = one foot  
fifty three inches = one foot  
fifty four inches = one foot  
fifty five inches = one foot  
fifty six inches = one foot  
fifty seven inches = one foot  
fifty eight inches = one foot  
fifty nine inches = one foot  
sixty inches = one foot  
sixty one inches = one foot  
sixty two inches = one foot  
sixty three inches = one foot  
sixty four inches = one foot  
sixty five inches = one foot  
sixty six inches = one foot  
sixty seven inches = one foot  
sixty eight inches = one foot  
sixty nine inches = one foot  
seventy inches = one foot  
seventy one inches = one foot  
seventy two inches = one foot  
seventy three inches = one foot  
seventy four inches = one foot  
seventy five inches = one foot  
seventy six inches = one foot  
seventy seven inches = one foot  
seventy eight inches = one foot  
seventy nine inches = one foot  
eighty inches = one foot  
eighty one inches = one foot  
eighty two inches = one foot  
eighty three inches = one foot  
eighty four inches = one foot  
eighty five inches = one foot  
eighty six inches = one foot  
eighty seven inches = one foot  
eighty eight inches = one foot  
eighty nine inches = one foot  
ninety inches = one foot  
ninety one inches = one foot  
ninety two inches = one foot  
ninety three inches = one foot  
ninety four inches = one foot  
ninety five inches = one foot  
ninety six inches = one foot  
ninety seven inches = one foot  
ninety eight inches = one foot  
ninety nine inches = one foot  
one hundred inches = one foot



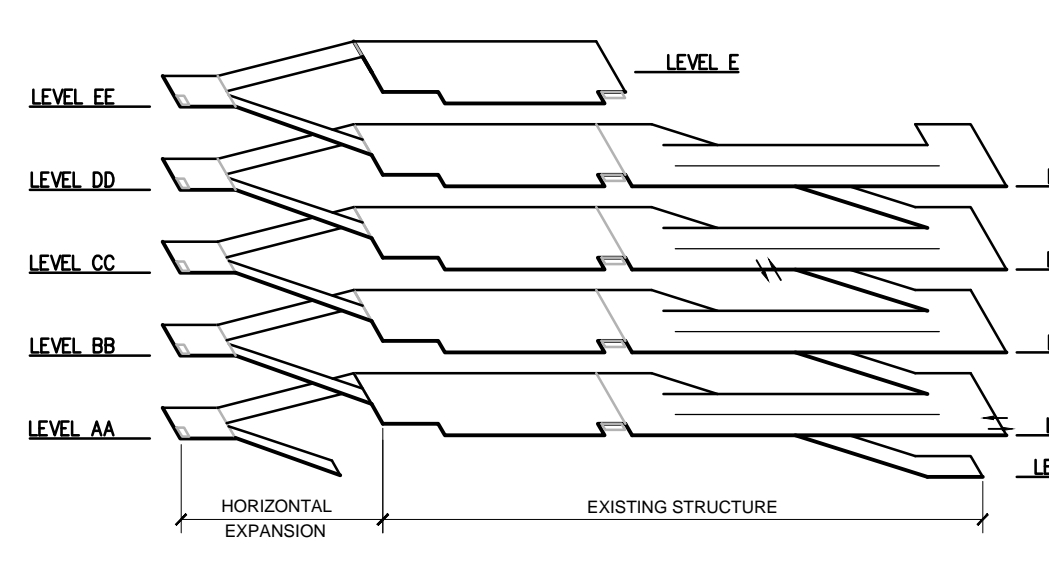
1 EAST ELEVATION  
1/8"=1'-0"



2 SOUTH ELEVATION | SECTIONAL VIEW  
1/8"=1'-0"

- ### GENERAL NOTES
- REFER TO SPECIFICATIONS DIVISION 01 GENERAL REQUIREMENTS.
  - REFER TO DRAWING G-004 FOR PROJECT CONSTRUCTION PHASING NOTES.
  - REFER TO DRAWING S-100 THROUGH S-105 FOR STRUCTURAL FRAMING PLANS AND RELATED SCOPE OF WORK ITEMS.
  - CONTRACTOR SHALL NOTE THAT THERE IS ATTIC STOCK FACE BRICK THAT WILL BE UTILIZED UNDER THIS CONTRACT. THERE ARE APPROXIMATELY 13 CUBES OF FACE BRICK IN ATTIC STOCK, +/- 6,500 FACE BRICK UNITS. THE FACE BRICK IS CURRENTLY STORED AT THE EXTERIOR OF THE EXISTING PARKING GARAGE BETWEEN COLUMN LINES 11-12 AT F. CONTRACTOR WILL VERIFY TOTAL FACE BRICK UNITS AVAILABLE PRIOR TO BIDDING.

- ### ELEVATION NOTES
- PROPOSED EXTERIOR FINISH GRADE ELEVATIONS.
  - CAST IN PLACE CONCRETE FOUNDATION WALL SYSTEM. REFER TO DRAWING S-100.
  - NOMINAL 4" FACE BRICK VENEER SYSTEM. REFER TO DRAWING A-302 AND A-303.
  - PRECAST CONCRETE SPANDREL PANEL SYSTEM. REFER TO DRAWING A-302 AND A-303.
  - ALUMINUM RAILING SYSTEM. REFER TO DRAWING A-305.
  - PRECAST CONCRETE BANDING/COURSE. REFER TO DRAWING A-302 AND A-303.
  - PRECAST CONCRETE COPING/CAP. REFER TO DRAWING A-302 AND A-303.
  - TYPICAL EXTERIOR WALL OPENINGS AT PARKING GARAGE.
  - LIGHT POLES AND FIXTURES. REFER TO DRAWING E-105.
  - EXISTING FACE BRICK VENEER AT EXISTING PRECAST CONCRETE COLUMNS.
  - EXISTING PRECAST CONCRETE SPANDREL PANELS.
  - EXISTING ALUMINUM RAILING SYSTEM.
  - PARKING GARAGE LEVEL E ADDITION ABOVE EXISTING PARKING GARAGE EXPANSION UNDER CONSTRUCTION.
  - EXISTING GRADE ELEVATION.



BUILDING ISOMETRIC

FACE BRICK  
YANKEE HILL BRICK COMPANY  
3705 SOUTH CODDINGTON AVENUE LINCOLN, NEBRASKA 68522  
TELEPHONE 402-477-6663  
WWW.YANKEEHILLBRICK.COM  
- YANKEE HILL LIGHT, MEDIUM AND DARK RED SMOOTH VASPCI  
(3 5/8" X 2 3/8" X 7 5/8") BRICKS  
- BRICKS TO MEET AND EXCEED ALL REQUIREMENTS AS SET FORTH IN  
ASTM C216 FOR CLASS SW, TYPE FBS

<b>CONSULTANTS:</b>  WALKER PARKING CONSULTANTS 3815 Plaza Drive • Ann Arbor, Michigan 48108 (734) 995-0200 • www.midwesternconsulting.com Land Development • Land Survey • Institutional • Municipal Wireless Communications • Transportation • Landfill Services		<b>KEYPLAN</b>		<b>ARCHITECT + ENGINEERS:</b>  BANCROFT ARCHITECTS + ENGINEERS 700 Nicholas Blvd., Suite 300 Elk Grove Village, IL 60007 Telephone : 847.952.9362 www.bancroft-ae.com Bancroft-AE Project No. 16-121 VA CONTRACT NO. VA250-17-C-0008		<b>Drawing Title</b> BUILDING ELEVATIONS  <b>Approved Project Director</b>		<b>Project Title</b> CONSTRUCT NORTH PARKING STRUCTURE  <b>Location</b> ANN ARBOR, MICHIGAN  <b>Date</b> 08-18-2017 <b>Checked</b> EM <b>Drawn</b> AG		<b>Project Number</b> 506-331 <b>Building Number</b> 29  <b>Drawing Number</b> A-202		<b>Office of Construction and Facilities Management</b> Department of Veterans Affairs	
--	--	----------------	--	--	--	---	--	--	--	--	--	---	--