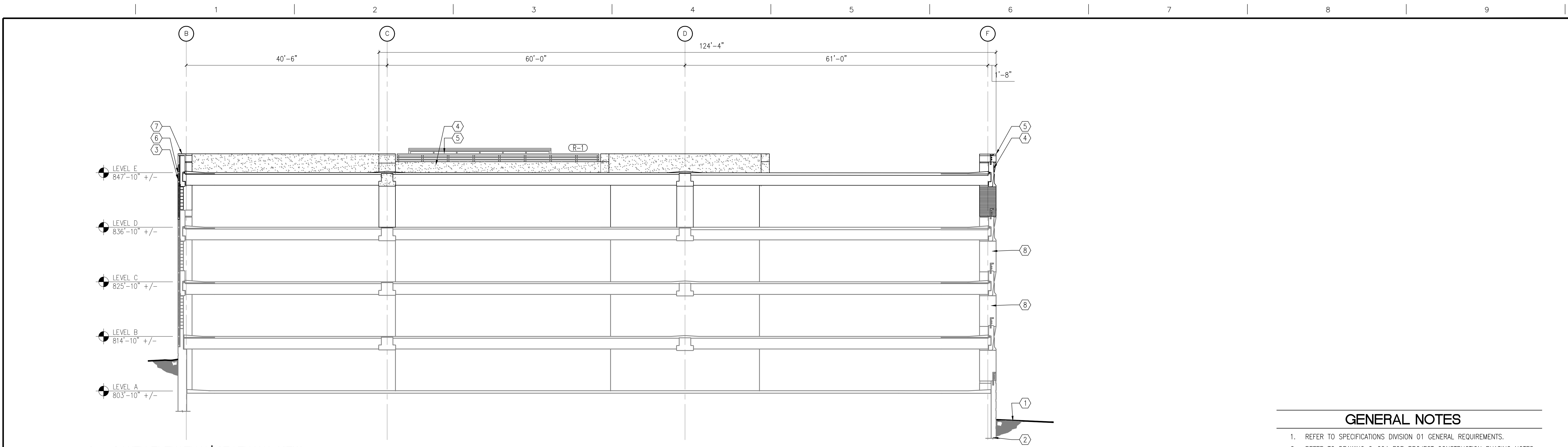
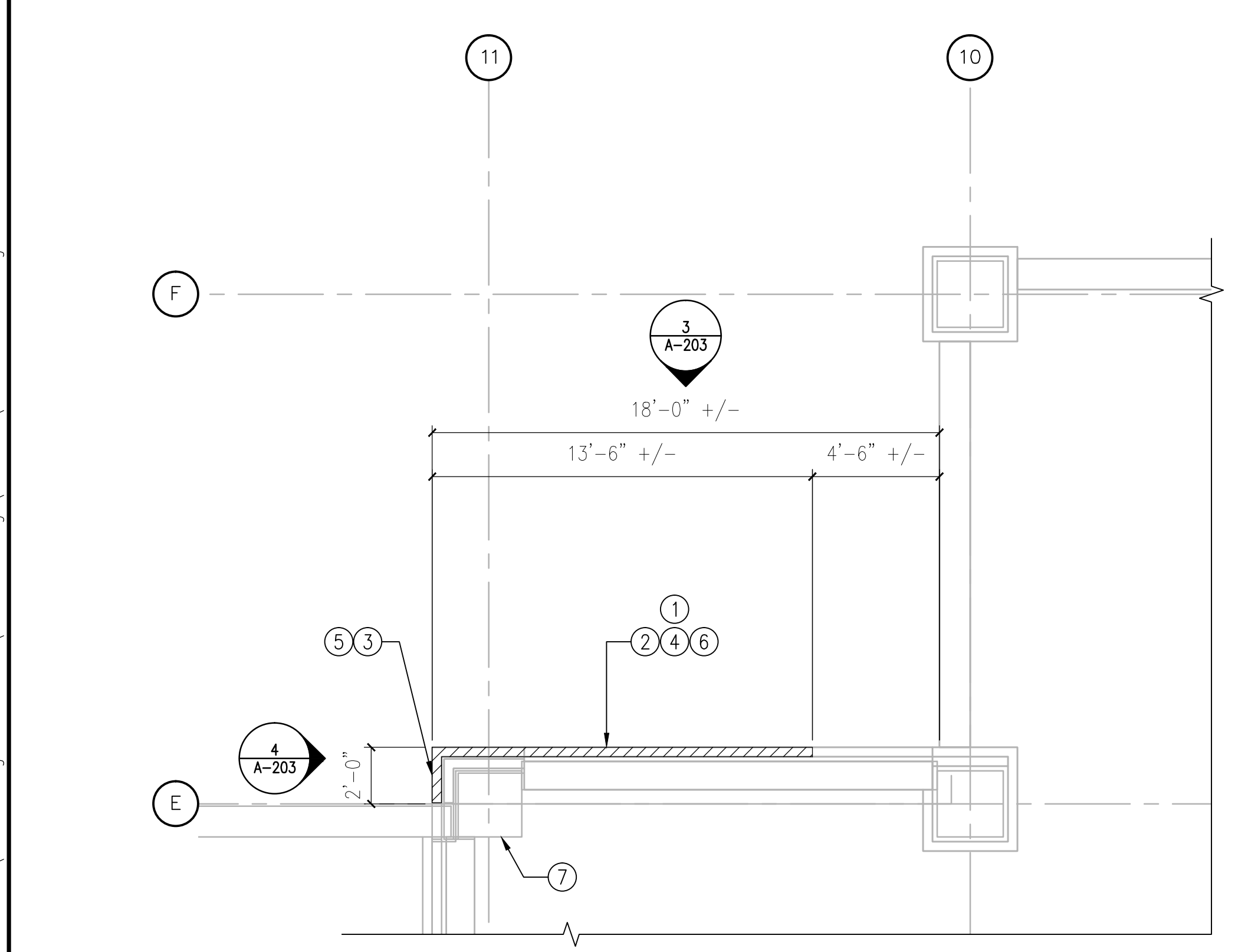


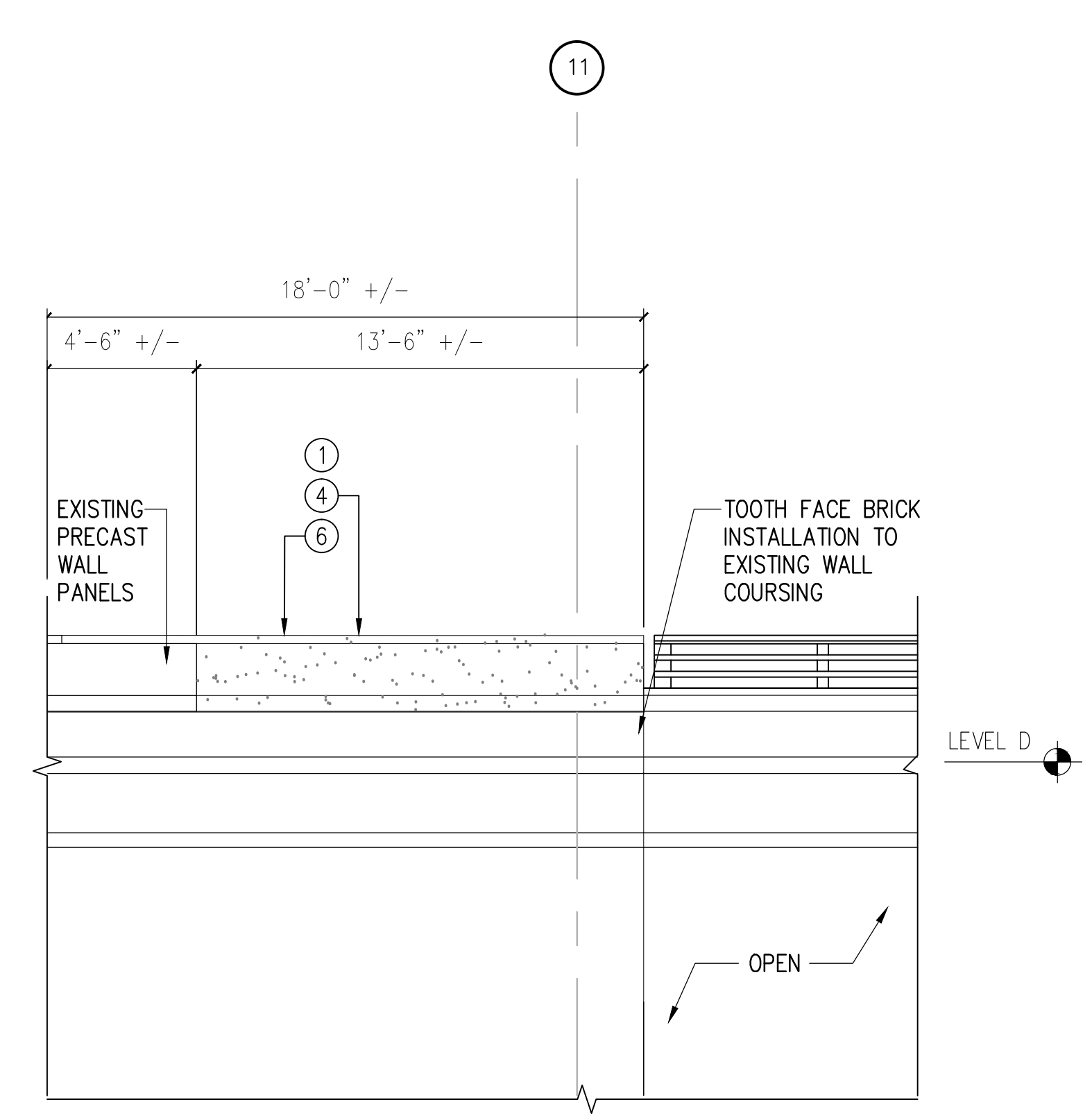
one eighth inch = one foot  
one quarter inch = one foot  
three eighths inch = one foot  
one half inch = one foot  
one inch = one foot  
three quarters inch = one foot  
one and one half inches = one foot  
three inches = one foot  
6"



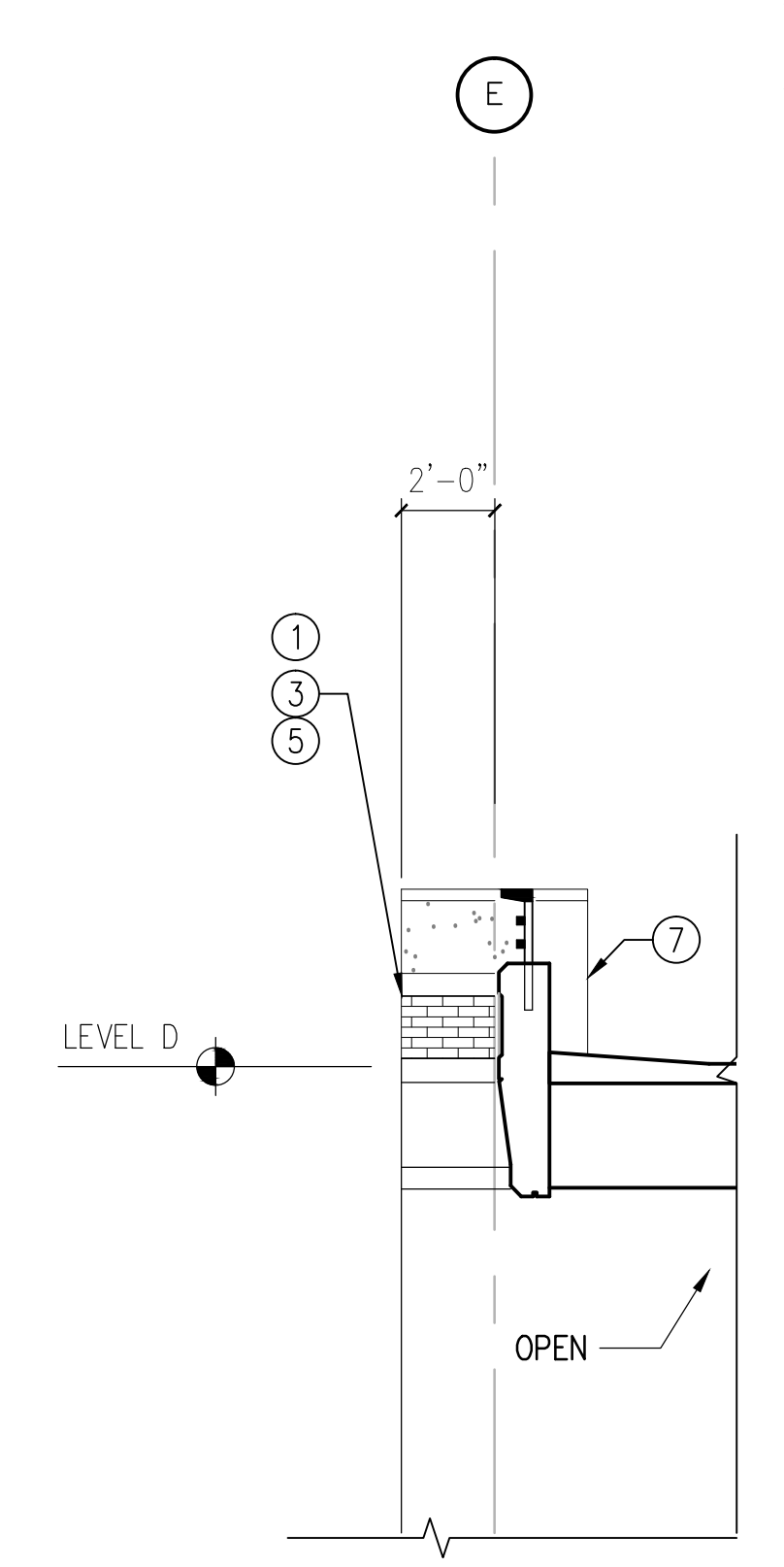
1 SOUTH ELEVATION | SECTIONAL VIEW  
1/8"=1'-0"



2 PARTIAL EXISTING LEVEL D - CONSTRUCTION PLAN  
1/4"=1'-0"



3 PARTIAL EAST ELEVATION  
1/4"=1'-0"

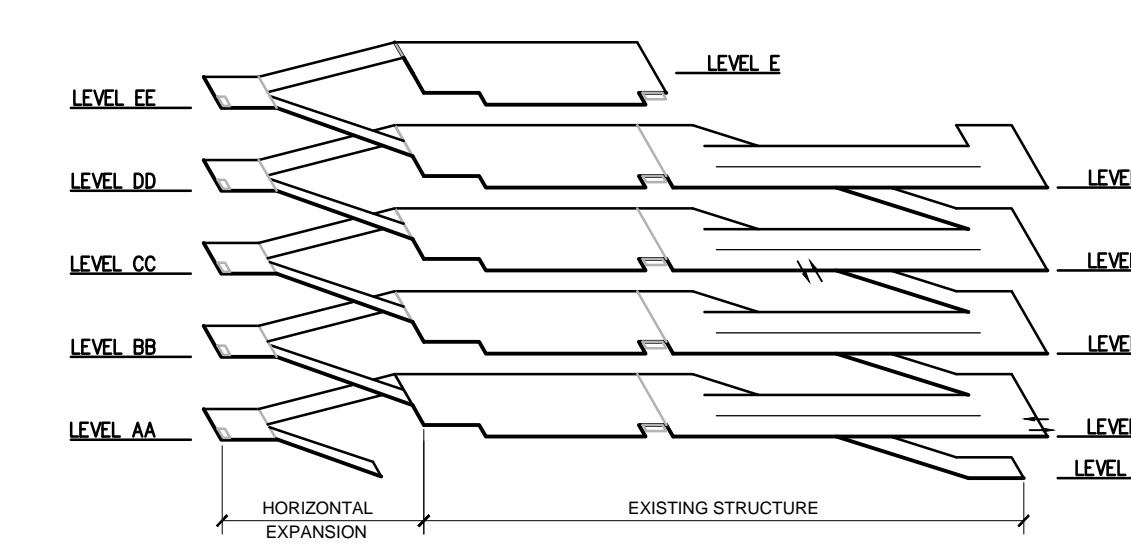


4 PARTIAL NORTH ELEVATION  
1/4"=1'-0"

- ELEVATION DETAIL NOTES**
- REFER TO APPENDIX E FOR PHOTO INDEX OF EXISTING WALL CONDITIONS.
  - REMOVE PRECAST CONCRETE COPING AND WALL PANELS AND ASSOCIATED STEEL BRACKETS. APPROXIMATELY 5'-0" LONG BY 2'-0" HIGH.
  - REMOVE EXISTING FACE BRICK WALL CONSTRUCTION. APPROXIMATELY 2'-0" LONG BY 6 BRICK COURSES HIGH.
  - THIS WALL AREA IS MISSING THE PRECAST CONCRETE WALL PANELS AND COPING. APPROXIMATE LENGTH IS 9'-8".
  - PROVIDE FACE BRICK INFILL. MATCH EXISTING COURSING HEIGHTS.
  - PROVIDE PRECAST CONCRETE WALL PANELS AND COPING SECTIONS.
  - AT PARKING DECK LEVEL D ELEVATION INFILL OPEN WALL AREA AT CORNER SECTION WITH MATCHING PRECAST CONCRETE WALL PANELS.

- GENERAL NOTES**
- REFER TO SPECIFICATIONS DIVISION 01 GENERAL REQUIREMENTS.
  - REFER TO DRAWING G-004 FOR PROJECT CONSTRUCTION PHASING NOTES.
  - REFER TO DRAWING S-100 THROUGH S-105 FOR STRUCTURAL FRAMING PLANS AND RELATED SCOPE OF WORK ITEMS.
  - CONTRACTOR SHALL NOTE THAT THERE IS ATTIC STOCK FACE BRICK THAT WILL BE UTILIZED UNDER THIS CONTRACT. THERE ARE APPROXIMATELY 13 CUBES OF FACE BRICK IN ATTIC STOCK, +/- 6,500 FACE BRICK UNITS. THE FACE BRICK IS CURRENTLY STORED AT THE EXTERIOR OF THE EXISTING PARKING GARAGE BETWEEN COLUMN LINES 11-12 AT F. CONTRACTOR WILL VERIFY TOTAL FACE BRICK UNITS AVAILABLE PRIOR TO BIDDING.

- ELEVATION NOTES**
- PROPOSED EXTERIOR FINISH GRADE ELEVATIONS.
  - CAST IN PLACE CONCRETE FOUNDATION WALL SYSTEM. REFER TO DRAWING S-100.
  - NOMINAL 4" FACE BRICK VENEER SYSTEM. REFER TO DRAWING A-302 AND A-303.
  - PRECAST CONCRETE SPANDREL PANEL SYSTEM. REFER TO DRAWING A-302 AND A-303.
  - ALUMINUM RAILING SYSTEM. REFER TO DRAWING A-305.
  - PRECAST CONCRETE BANDING/COURSE. REFER TO DRAWING A-302 AND A-303.
  - PRECAST CONCRETE COPING/CAP. REFER TO DRAWING A-302 AND A-303.
  - TYPICAL EXTERIOR WALL OPENINGS AT PARKING GARAGE.
  - LIGHT POLES AND FIXTURES. REFER TO DRAWING E-105.



BUILDING ISOMETRIC

<b>CONSULTANTS:</b>  WALKER PARKING CONSULTANTS 6125 North Lincoln, Suite 100 Ann Arbor, MI 48108		<b>MIDWESTERN CONSULTING</b> 3815 Plaza Drive • Ann Arbor, Michigan 48108 (734) 995-0200 • www.midwesternconsulting.com Land Development • Land Survey • Institutional • Municipal Wireless Communications • Transportation • Landfill Services		<b>KEYPLAN</b>		<b>ARCHITECT + ENGINEERS:</b>  BANCROFT ARCHITECTS + ENGINEERS 700 Nicholas Blvd., Suite 300 Elk Grove Village, IL 60007 Telephone : 847.952.9362 www.bancroft-ae.com Bancroft-AE Project No. 16-121 VA CONTRACT NO. VA250-17-C-0008		<b>Drawing Title</b> BUILDING ELEVATIONS  <b>Approved Project Director</b>		<b>Project Title</b> CONSTRUCT NORTH PARKING STRUCTURE  <b>Location</b> ANN ARBOR, MICHIGAN  <b>Date</b> 08-18-2017 <b>Checked</b> EM <b>Drawn</b> AG		<b>Project Number</b> 506-331 <b>Building Number</b> 29 <b>Drawing Number</b> A-203		<b>Office of Construction and Facilities Management</b> Department of Veterans Affairs	
---	--	---	--	----------------	--	--	--	---	--	--	--	--	--	---	--