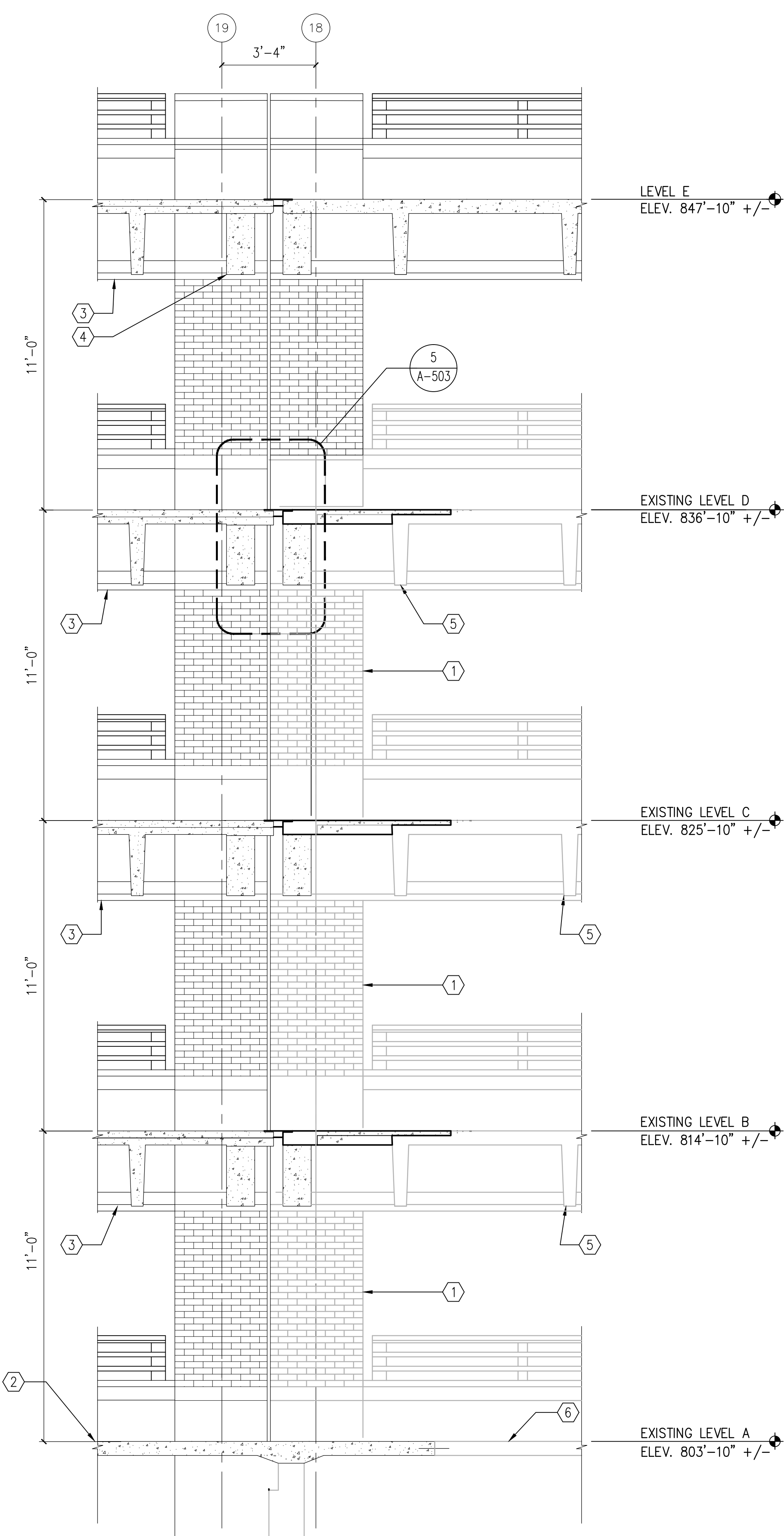


GENERAL NOTES

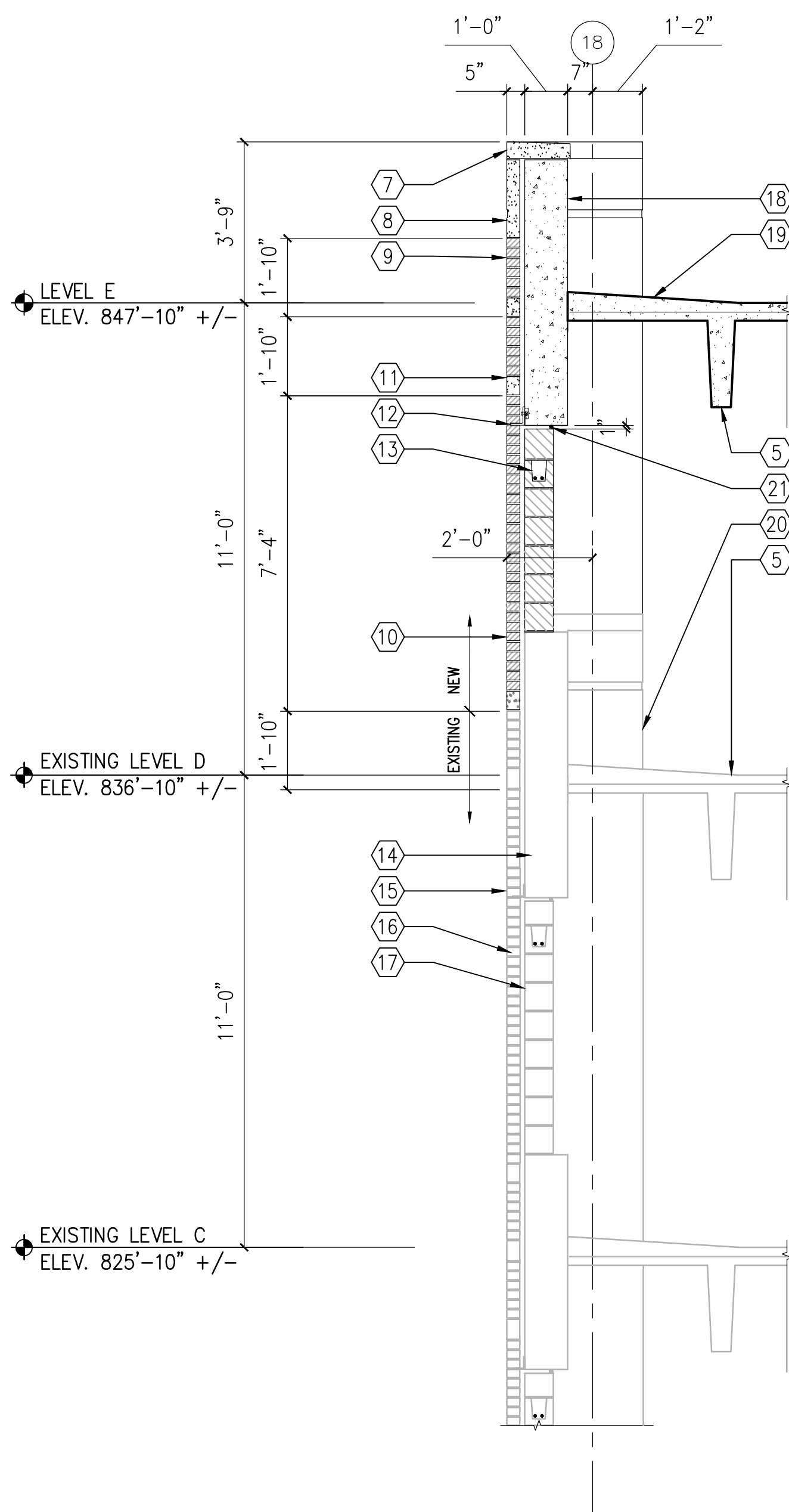
- REFER TO SPECIFICATIONS DIVISION 01 GENERAL REQUIREMENTS.
- REFER TO DRAWING G-004 FOR PROJECT CONSTRUCTION PHASING NOTES.
- REFER TO DRAWING S-100 THROUGH S-105 FOR STRUCTURAL FRAMING PLANS AND RELATED SCOPE OF WORK ITEMS.

ELEVATION NOTES

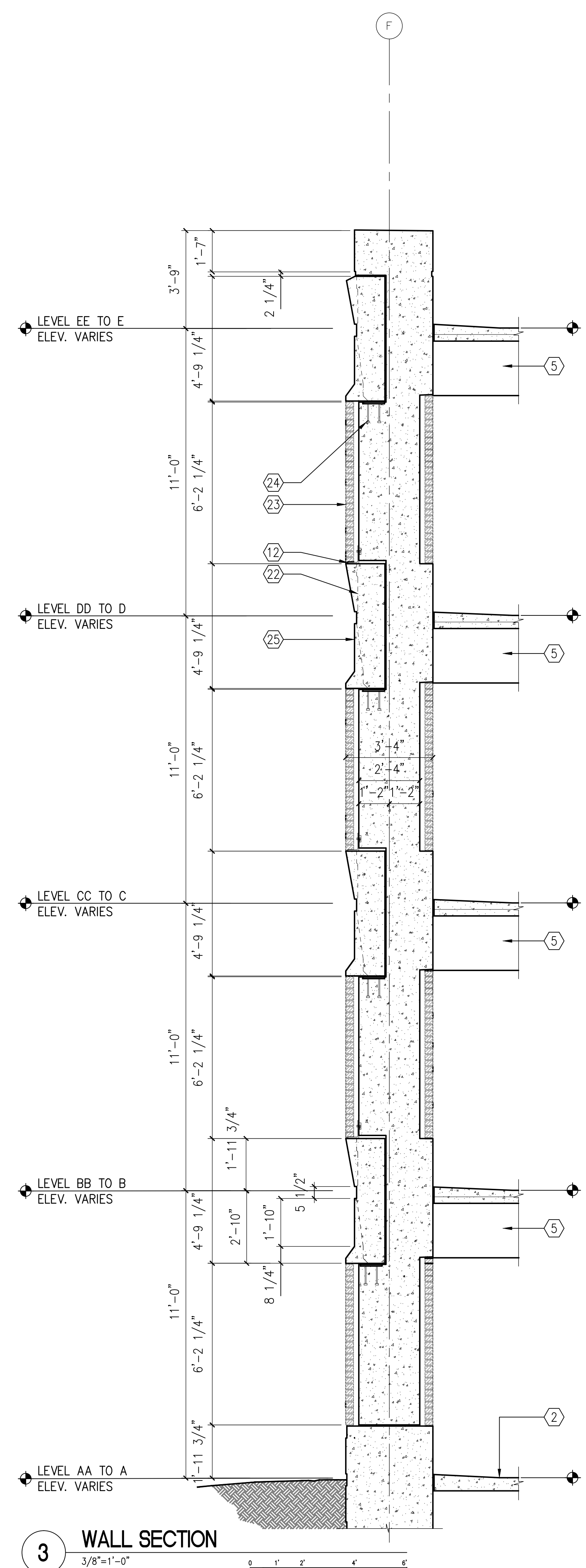
- REFER TO DETAIL PLANS FOR MASONRY INFILL WORK AT EXISTING COLUMN ENCLOSURES. CONTRACTOR WILL TOOTH INTO EXISTING FACE BRICK COURSING.
- CONCRETE SLAB POURED AT GRADE. REFER TO STRUCTURAL DRAWINGS FOR ALL REQUIREMENTS AND DETAILING.
- PRECAST CONCRETE SPANDREL WALL PANELS ALONG EXTERIOR BUILDING LINE/FACE.
- PRECAST CONCRETE BEAMS. REFER TO STRUCTURAL DRAWINGS FOR SIZES AND STEEL REINFORCING.
- PRECAST CONCRETE DOUBLE TEE MEMBERS.
- EXISTING CONCRETE SLAB AT EXISTING LEVEL A.
- PROVIDE PRECAST CONCRETE COPINGS.
- PROVIDE PRECAST CONCRETE PANELS.
- NOMINAL 4-INCH FACE BRICK VENEER WALL CONSTRUCTION.
- REFER TO DETAILS ON DRAWING AD-201 FOR NOTATIONS.
- PROVIDE PRECAST CONCRETE BANDING.
- STEEL SHELF ANGLE. REFER TO STRUCTURAL DRAWINGS FOR DETAIL.
- CMU BOND BEAM.
- EXISTING PRECAST CONCRETE WALL PANEL.
- EXISTING FACE BRICK EXTERIOR WALL CONSTRUCTION.
- EXISTING PRECAST CONCRETE BANDING.
- EXISTING CMU WALL CONSTRUCTION.
- PRECAST CONCRETE WALL PANELS.
- REFER TO STRUCTURAL DRAWINGS FOR CONCRETE WASH REQUIREMENTS.
- EXISTING PRECAST CONCRETE COLUMNS IN BEYOND.
- PROVIDE FULL LENGTH BACKER ROD AND SEALANT SYSTEM AT JOINT.
- PRECAST CONCRETE INFILL AT COLUMNS.
- NOMINAL 4-INCH FACE BRICK ENCLOSURES AT PRECAST COLUMNS.
- REFER TO STRUCTURAL DRAWINGS FOR BEARING PAD AND ANCHOR SYSTEMS.
- PRECAST CONCRETE SPANDREL PANEL ANCHORED TO CONCRETE COLUMN.





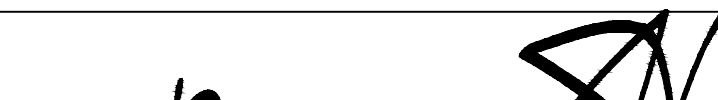
1 WALL SECTION
3/8"=1'-0"



2 WALL SECTION
3/8"=1'-0"



3 WALL SECTION
3/8"=1'-0"

		CONSULTANTS:		KEYPLAN		ARCHITECT + ENGINEERS:		Drawing Title EXTERIOR AND INTERIOR WALL SECTIONS		Project Title CONSTRUCT NORTH PARKING STRUCTURE		Project Number 506-331		Office of Construction and Facilities Management	
		 										Building Number 29			
100% FINAL BID DOCUMENTS		08-18-2017						Approved: Project Director		Location ANN ARBOR, MICHIGAN		Drawing Number A-303			
100% BID DOCUMENTS-NOT FOR CONSTRUCTION		07-24-2017		MIDWESTERN CONSULTING				BANCROFT ARCHITECTS + ENGINEERS		Date 08-18-2017		Checked EM		Drawn AQ	
95% CONSTRUCTION DOCUMENTS SUBMISSION		06-15-2017		3815 Plaza Drive Ann Arbor, Michigan 48108 (734) 995-0200 • www.midwesternconsulting.com				700 Nicholas Blvd., Suite 300 Elk Grove Village, IL 60007 Telephone : 847.952.9342 www.bancroft-ae.com Bancroft-AE Project No. 16-121							
65% DESIGN DEVELOPMENT SUBMISSION		04-19-2017		Land Development • Land Survey • Institutional • Municipal Wireless Communications • Transportation • Landfill Services											
35% SCHEMATIC DESIGN SUBMISSION		03-06-2017		WALKER PARKING CONSULTANTS											
Revisions:		Date		215 Park Street, Suite 1 Ann Arbor, MI 48106											