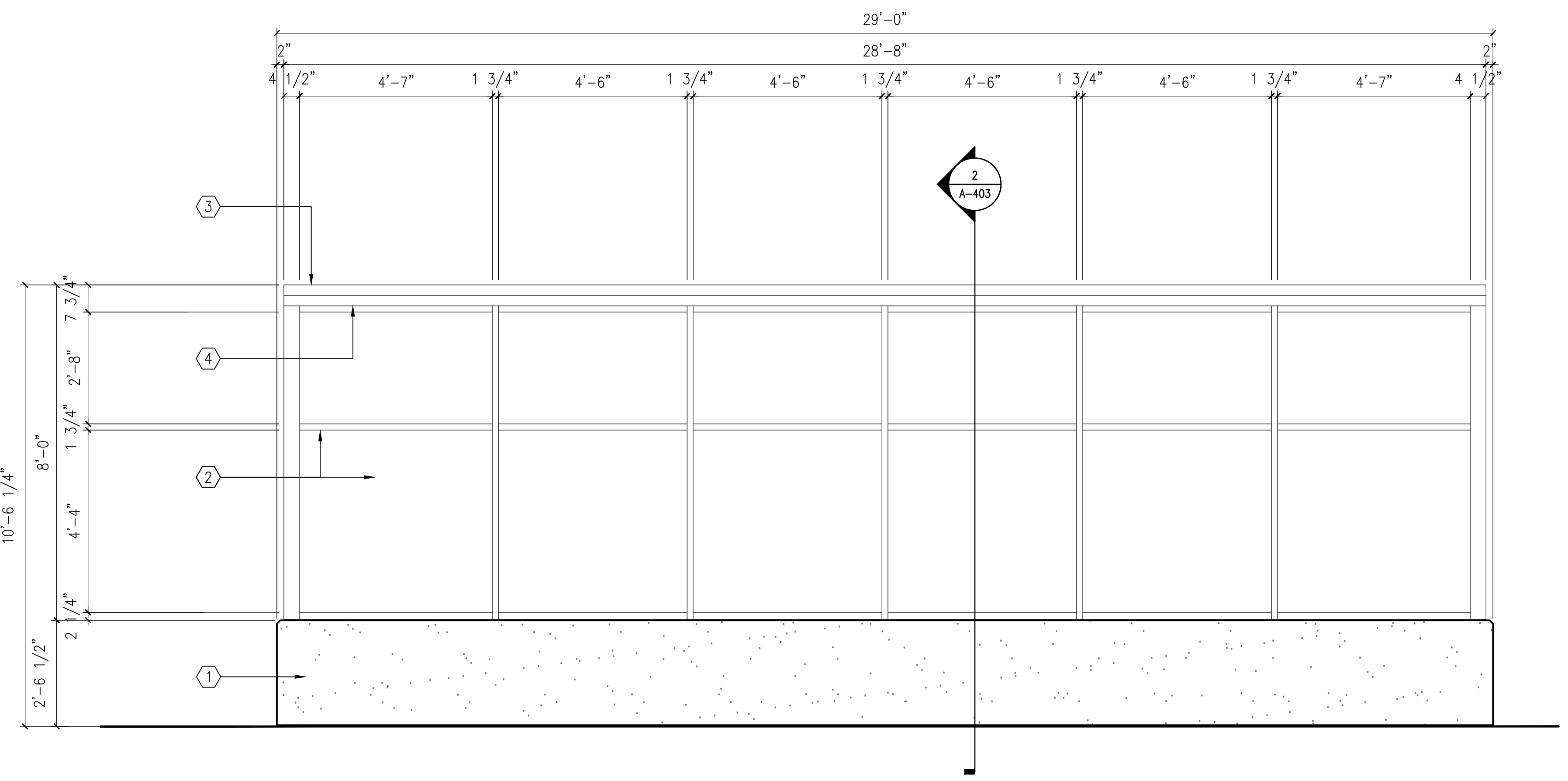
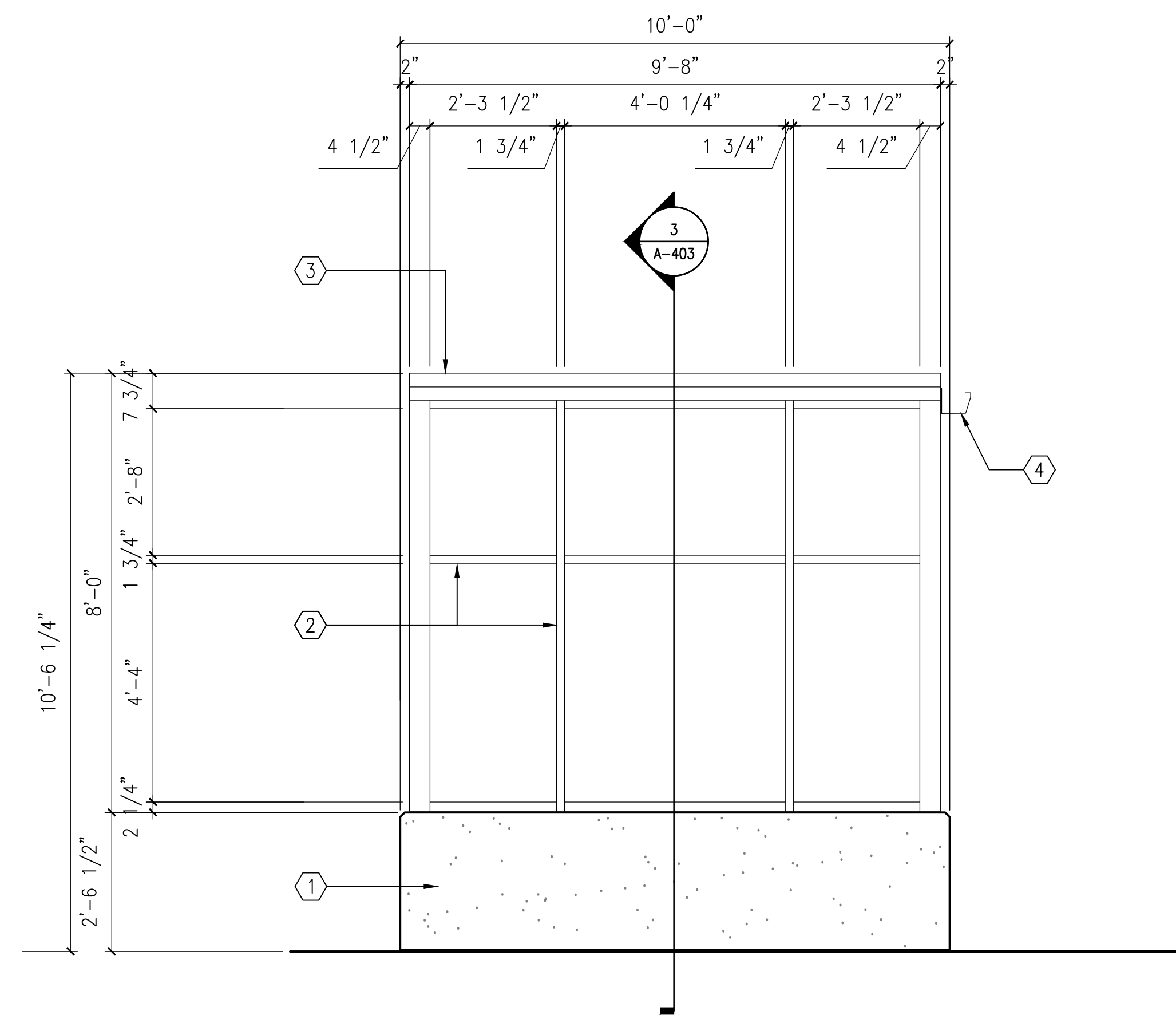


three eighths inch = one foot  
one quarter inch = one foot  
one eighth inch = one foot  
three eighths inch = one foot  
one half inch = one foot  
three quarters inch = one foot  
one inch = one foot  
one and one half inches = one foot  
two inches = one foot  
three inches = one foot

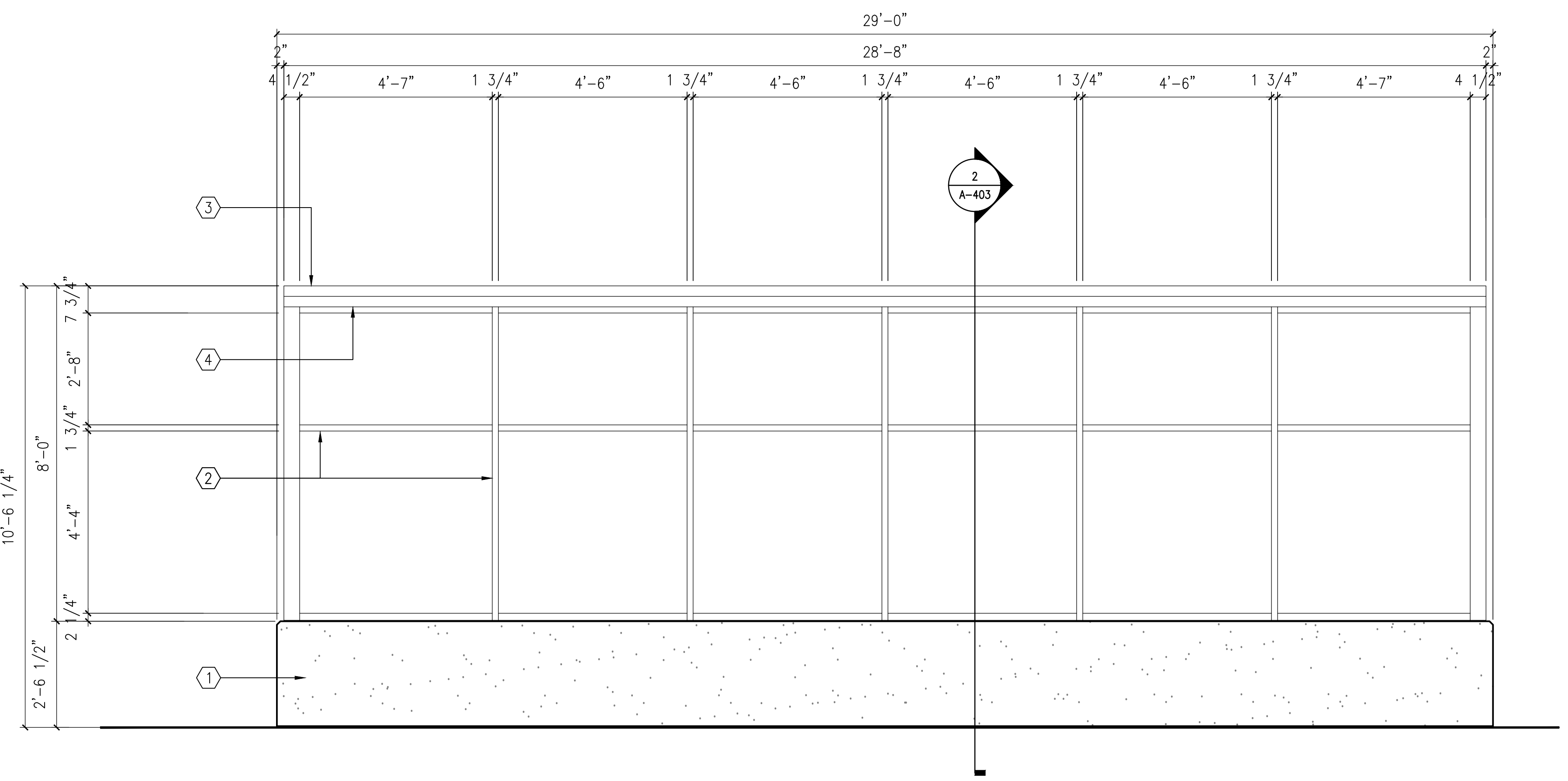
VA FORM 08-6231  
K:\COC-PROJECTS\2016\16-121 - VA25116R0030 - Ann Arbor Parking Garage 506-331.dwg 8-16-17 01:25:51 PM A:\gprich



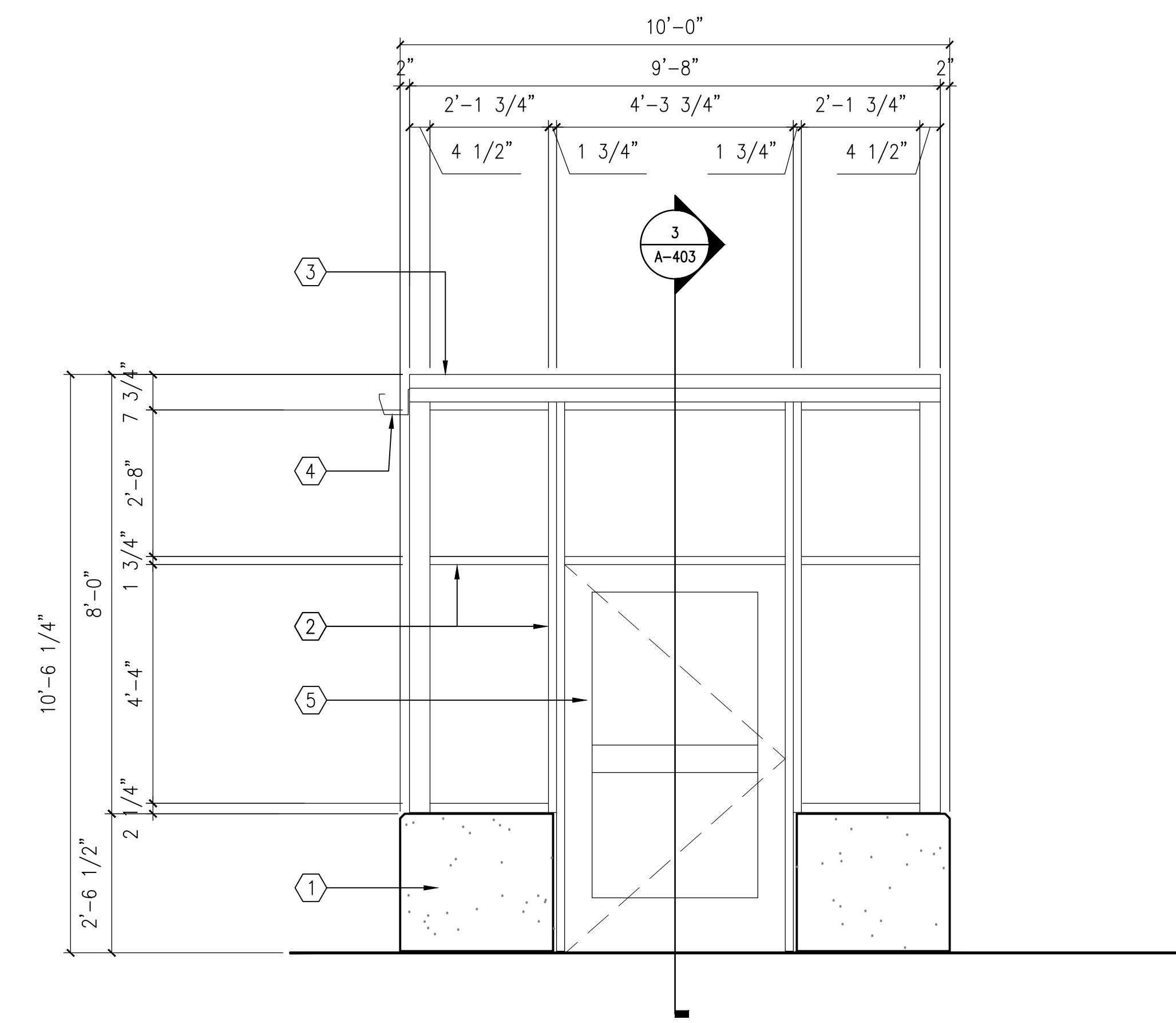
1 NORTH ELEVATION AT STAIR ENCLOSURE - LEVEL EE  
1/2"=1'-0"



2 WEST ELEVATION AT STAIR ENCLOSURE - LEVEL EE  
1/2"=1'-0"



3 SOUTH ELEVATION AT STAIR ENCLOSURE - LEVEL EE  
1/2"=1'-0"



4 EAST ELEVATION AT STAIR ENCLOSURE - LEVEL EE  
1/2"=1'-0"

- ### GENERAL NOTES
- REFER TO SPECIFICATIONS DIVISION 01 GENERAL REQUIREMENTS.
  - REFER TO DRAWING G-004 FOR PROJECT CONSTRUCTION PHASING NOTES.
  - REFER TO DRAWING S-100 THROUGH S-105 FOR STRUCTURAL FRAMING PLANS AND RELATED SCOPE OF WORK ITEMS.
- ### ELEVATION NOTES

- CONCRETE WAINSCOT HEIGHT WALL. REFER TO STRUCTURAL DRAWINGS FOR ADDITIONAL INFORMATION.
- ALUMINUM STOREFRONT SYSTEM. REFER TO DRAWING A-802 FOR DETAILS AT ALUMINUM STOREFRONT SYSTEM.
- ALUMINUM FASCIA SYSTEM.
- ALUMINUM GUTTER AND DOWNSPOUT, PROVIDE DOWNSPOUTS AT EACH END OF GUTTER SYSTEM. DOWNSPOUTS NOT INDICATED FOR DRAWING CLARITY.

<b>CONSULTANTS:</b>		<b>KEYPLAN</b>	<b>ARCHITECT + ENGINEERS:</b>	<b>Drawing Title</b> STAIR ENCLOSURE ELEVATIONS	<b>Project Title</b> CONSTRUCT NORTH PARKING STRUCTURE	<b>Project Number</b> 506-331	<b>Office of Construction and Facilities Management</b> 
 WALKER PARKING CONSULTANTS 225 Andy Drive, Suite 1 Ann Arbor, MI 48108			 BANCROFT ARCHITECTS + ENGINEERS 700 Nicholas Blvd., Suite 300 Eli Grove Village, IL 60007 Telephone : 847.952.9362 www.bancroft-ae.com Bancroft-AE Project No. 16-121	<b>Approved Project Director</b>	<b>Location</b> ANN ARBOR, MICHIGAN	<b>Building Number</b> 29	
<b>100% FINAL BID DOCUMENTS</b> 08-18-2017 <b>100% BID DOCUMENTS-NOT FOR CONSTRUCTION</b> 07-24-2017 <b>95% CONSTRUCTION DOCUMENTS SUBMISSION</b> 06-15-2017 <b>65% DESIGN DEVELOPMENT SUBMISSION</b> 04-19-2017 <b>35% SCHEMATIC DESIGN SUBMISSION</b> 03-06-2017 <b>Revisions:</b> Date				<b>Date</b> 08-18-2017	<b>Checked</b> EM	<b>Drawn</b> AQ	