

BUILDING ISOMETRIC

GENERAL NOTES

1.

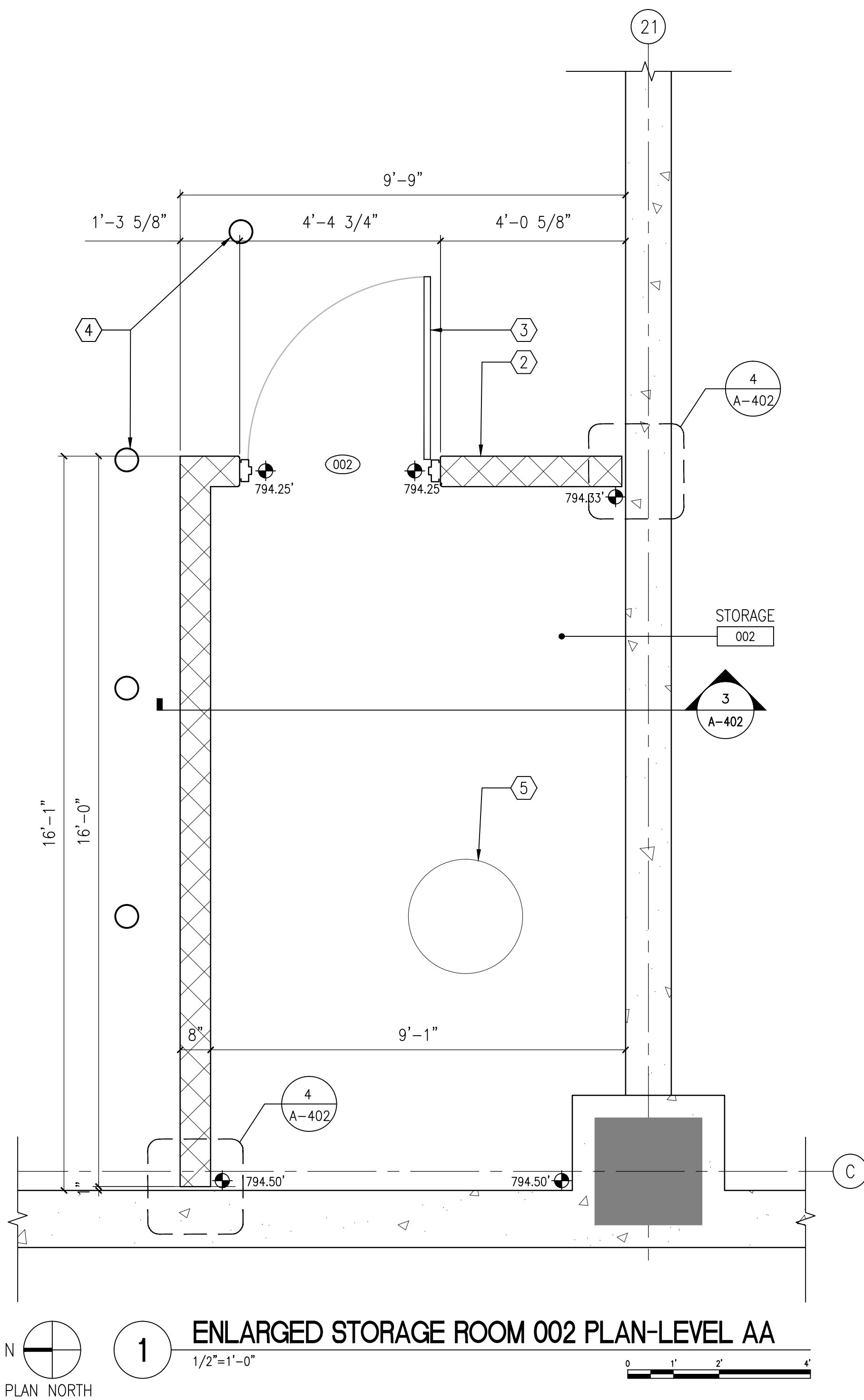
ENLARGED PLAN NOTES

- POURED IN-PLACE CONCRETE FOUNDATION WALL. PROVIDE WATER PROOFING SYSTEM AT WALL AREAS INDICATED.
- NOMINAL 8" CMU WALL SYSTEM. REFER TO STRUCTURAL DRAWING S-504 FOR DETAIL. ALL CMU'S WILL BE 'DRY-BLOCK'. CMU'S AT ALL EXPOSED CORNERS WILL BE BULLNOSED.
- HOLLOW METAL DOORS AND FRAMES. REFER TO SPECIFICATIONS SECTION 08 11 13.
- STEEL PIPE BOLLARDS. REFER TO DRAWING A-404 FOR DIMENSIONAL LAYOUT PLAN.
- SANITARY SUMP BASIN. REFER TO PLUMBING DRAWING P-101.
- REFER TO DETAIL ELECTRICAL ROOM PLAN ON DRAWING E-401 FOR CONDUIT LAYOUT. CONTRACTOR WILL PROVIDE GALVANIZED STEEL PIPE SLEEVES AT ALL CONDUIT PENETRATIONS.

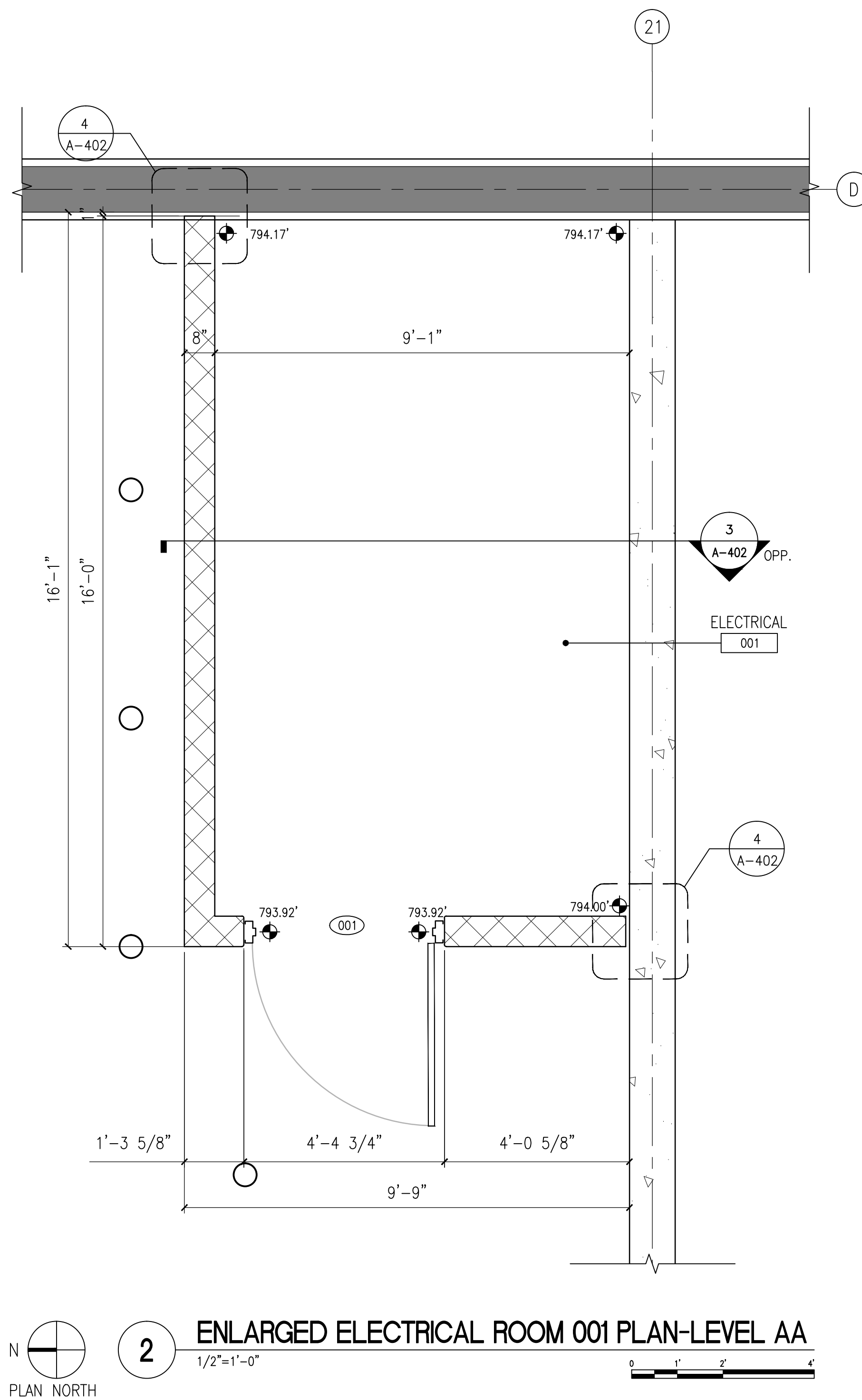
CONCRETE MASONRY NOTES

CONCRETE MASONRY UNITS:

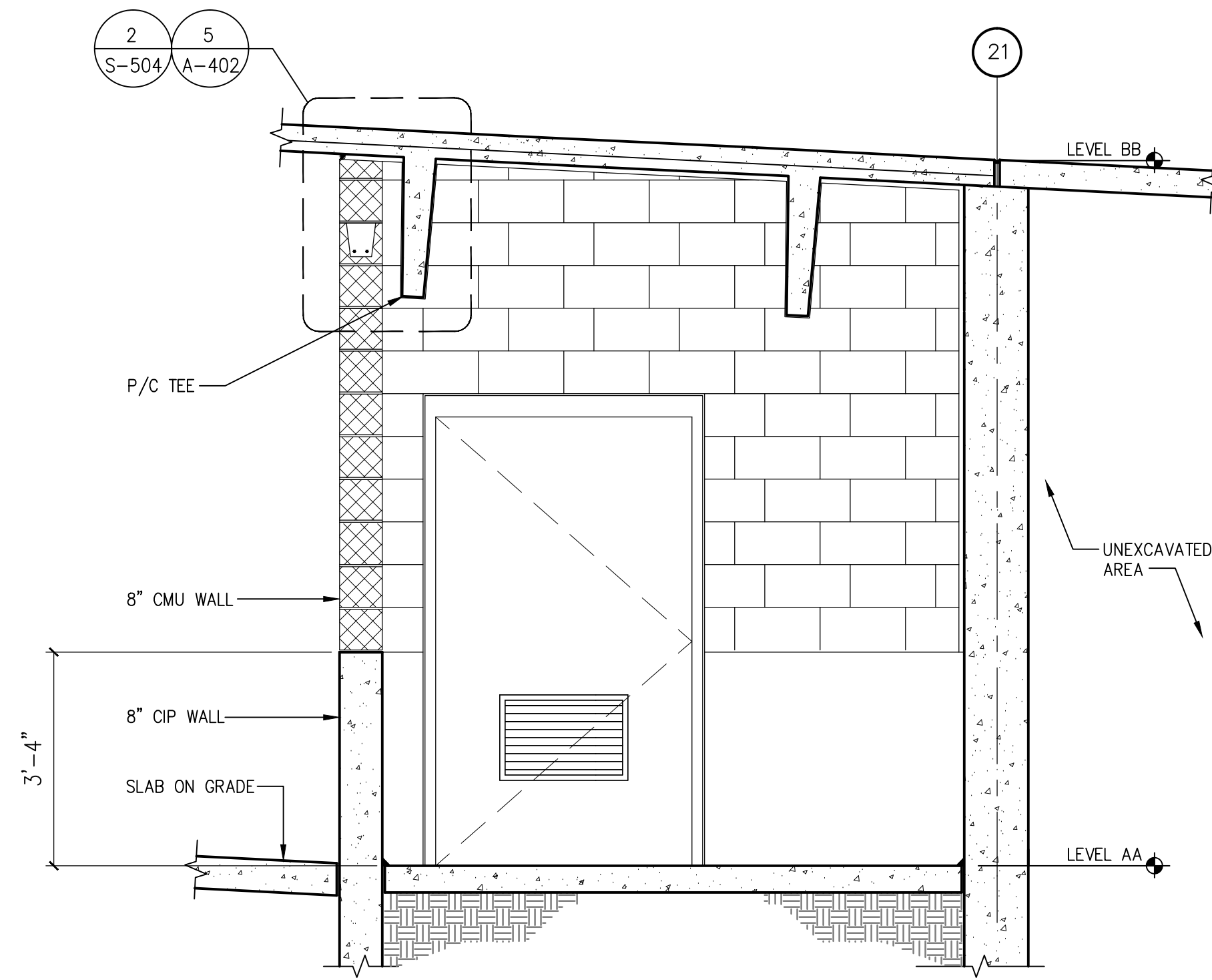
- ALL CONCRETE MASONRY UNITS, CMU'S, WILL BE NORMAL WEIGHT, TYPES, SIZES AND SHAPES AS SHOWN IN DETAILS. ALL EXPOSED CORNERS WILL BE PROVIDED WITH STANDARD RADIUS BULLNOSE PROFILE.
- PROVIDE UNITS WITH AN INTEGRAL WATER REPELLENT SYSTEM FOR CONCRETE BLOCK AND MORTAR.
- MANUFACTURER WILL BE GRACE CONSTRUCTION PRODUCTS OR VA APPROVED EQUAL.
- PRODUCT DESCRIPTION IS DRY-BLOCK SYSTEM OF 2 WATER-REPELLENT ADMIXTURES. ONE ADMIXTURE WILL BE MIXED THROUGHOUT THE CONCRETE DURING MANUFACTURE OF THE CMU'S. THE OTHER ADMIXTURE WILL BE ADDED TO THE MORTAR DURING MIXING PROCESS.
- ALL MORTAR JOINTS WILL BE WELL-TOOLED CONCAVE STYLE.
- EXCESS MORTAR CONTAINING DRY-BLOCK WILL BE REMOVED FROM FACE OF MASONRY UNIT'S PROMPTLY. REFER TO MANUFACTURER'S TECHNICAL BULLETIN FOR 'CLEANING MASONRY CONTAINING DRY-BLOCK'.



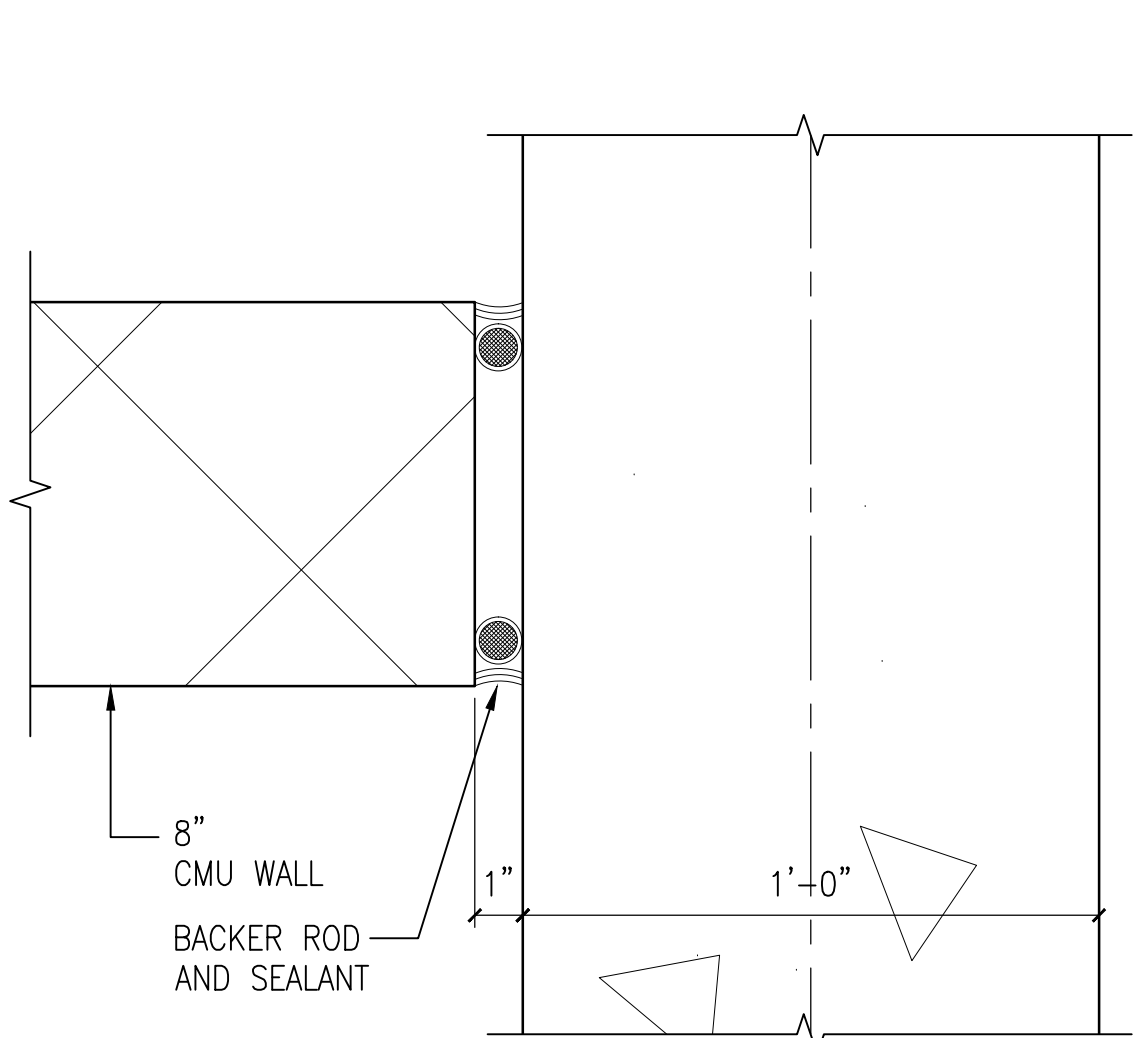
1 ENLARGED STORAGE ROOM 002 PLAN-LEVEL AA
1/2"=1'-0"



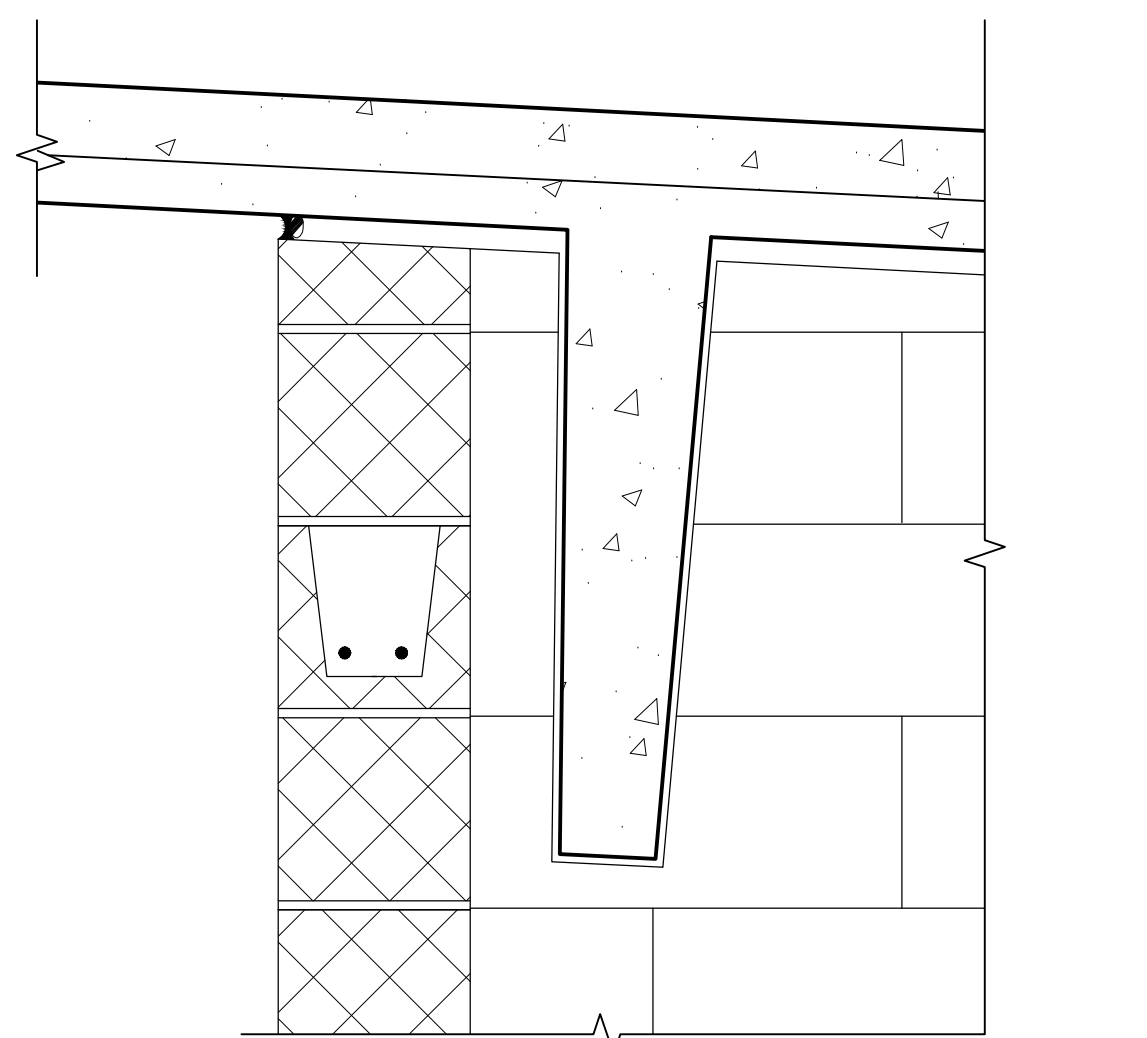
2 ENLARGED ELECTRICAL ROOM 001 PLAN-LEVEL AA
1/2"=1'-0"






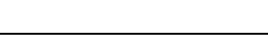

3 SECTION AT LEVEL AA
1/2"=1'-0"



4 PLAN DETAIL AT CMU WALL
3"=1'-0"



5 DETAIL AT CMU WALL
1-1/2"=1'-0"

		CONSULTANTS:		KEYPLAN 		ARCHITECT + ENGINEERS:		Drawing Title ENLARGED PLANS AND DETAILS		Project Title CONSTRUCT NORTH PARKING STRUCTURE		Project Number 506-331		Office of Construction and Facilities Management  Department of Veterans Affairs	
		  MIDWESTERN CONSULTING 3815 Plaza Drive Ann Arbor, Michigan 48108 (734) 995-0200 • www.midwesternconsulting.com Land Development • Land Survey • Institutional • Municipal Wireless Communications • Transportation • Landfill Services				 BANCROFT ARCHITECTS + ENGINEERS 700 Nicholas Blvd., Suite 300 Elk Grove Village, IL 60007 Telephone : 847.952.9342 www.bancroft-ae.com Bancroft-AE Project No. 14-121		Approved Project Director		Location ANN ARBOR, MICHIGAN		Building Number 29			
100% FINAL BID DOCUMENTS		08-18-2017										Drawing Number A-402			
100% BID DOCUMENTS-NOT FOR CONSTRUCTION		07-24-2017													
95% CONSTRUCTION DOCUMENTS SUBMISSION		06-15-2017													
65% DESIGN DEVELOPMENT SUBMISSION		04-19-2017													
35% SCHEMATIC DESIGN SUBMISSION		03-06-2017													
Revisions:		Date													