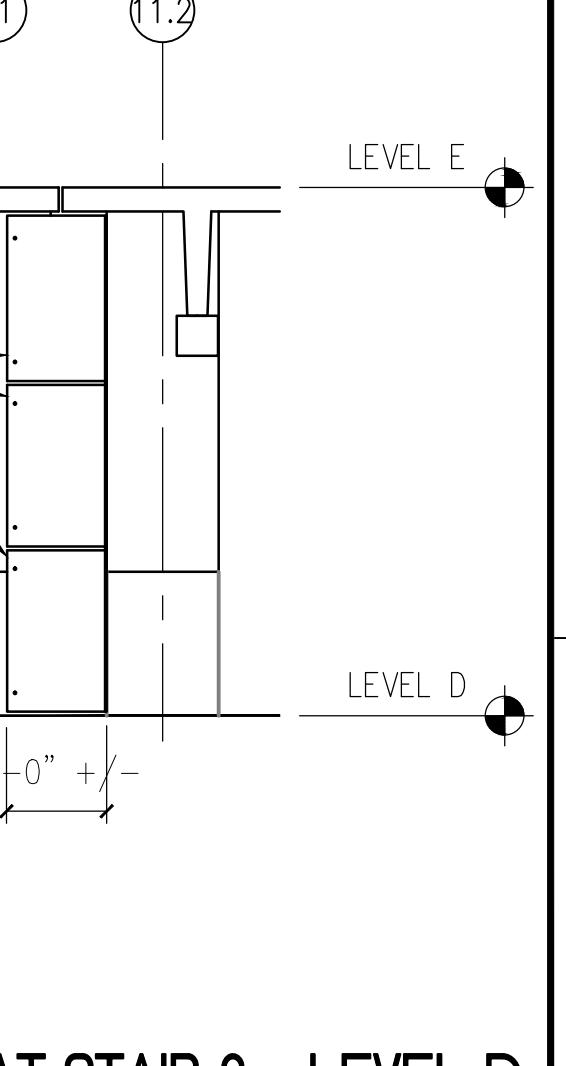
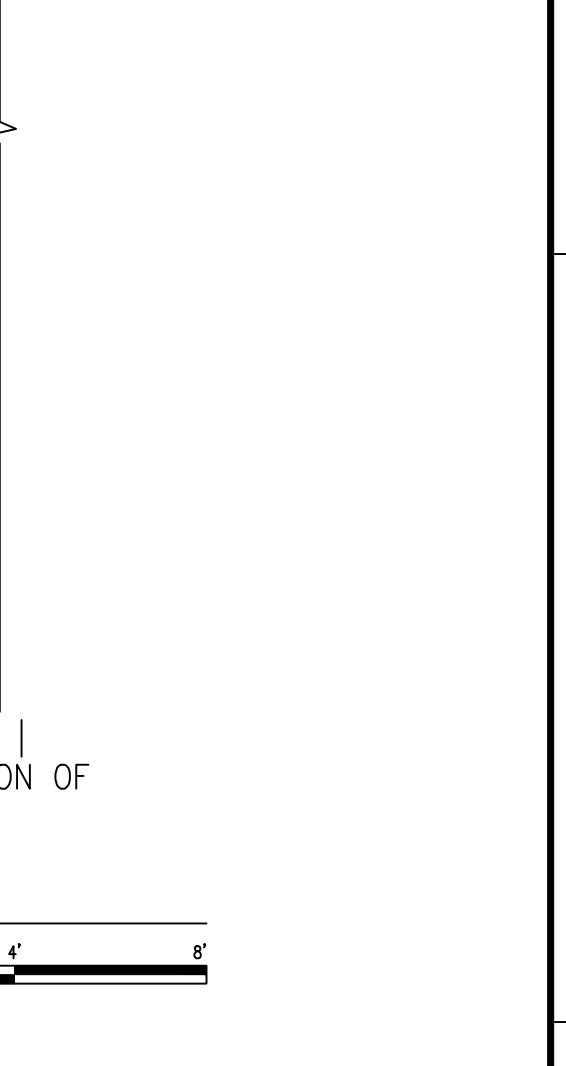
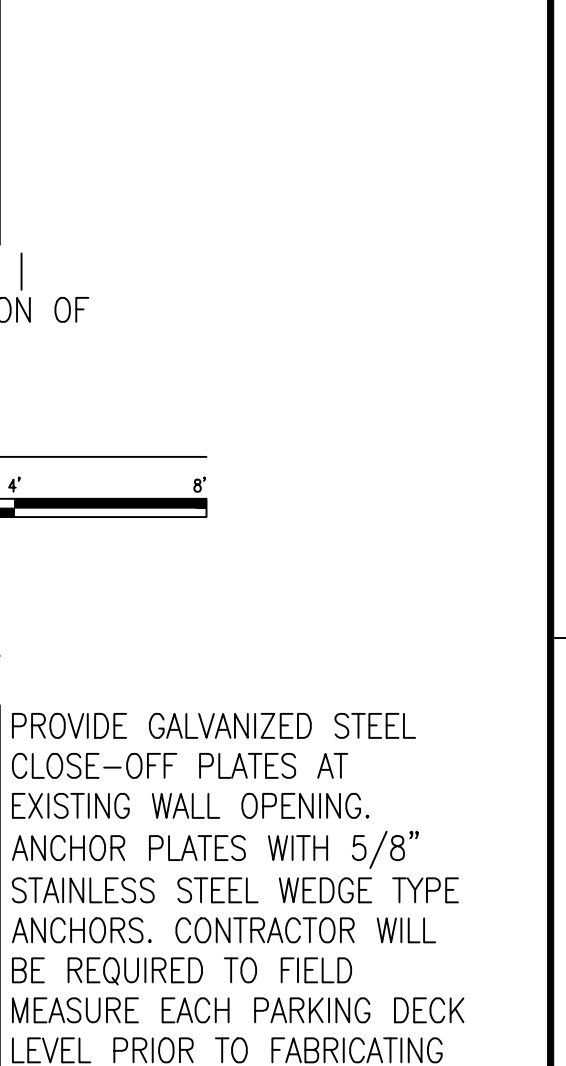
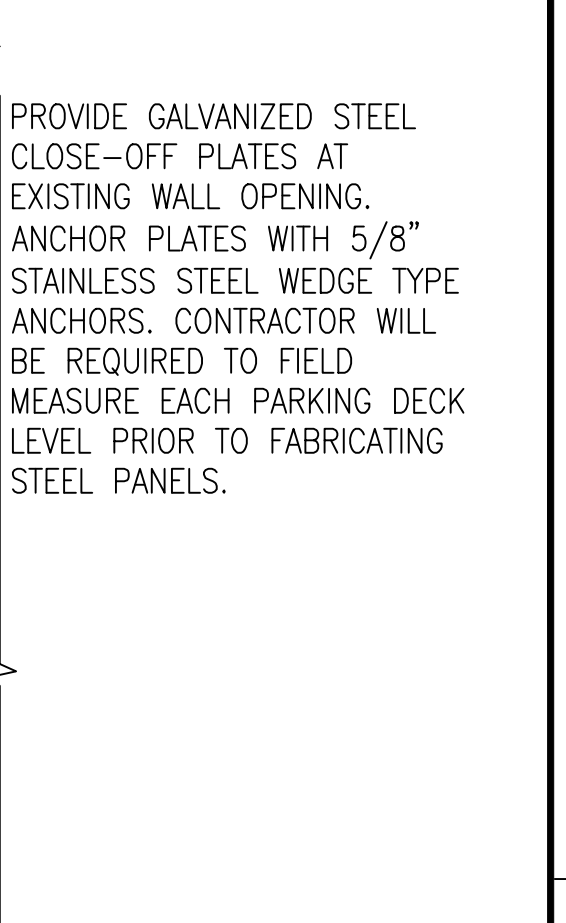
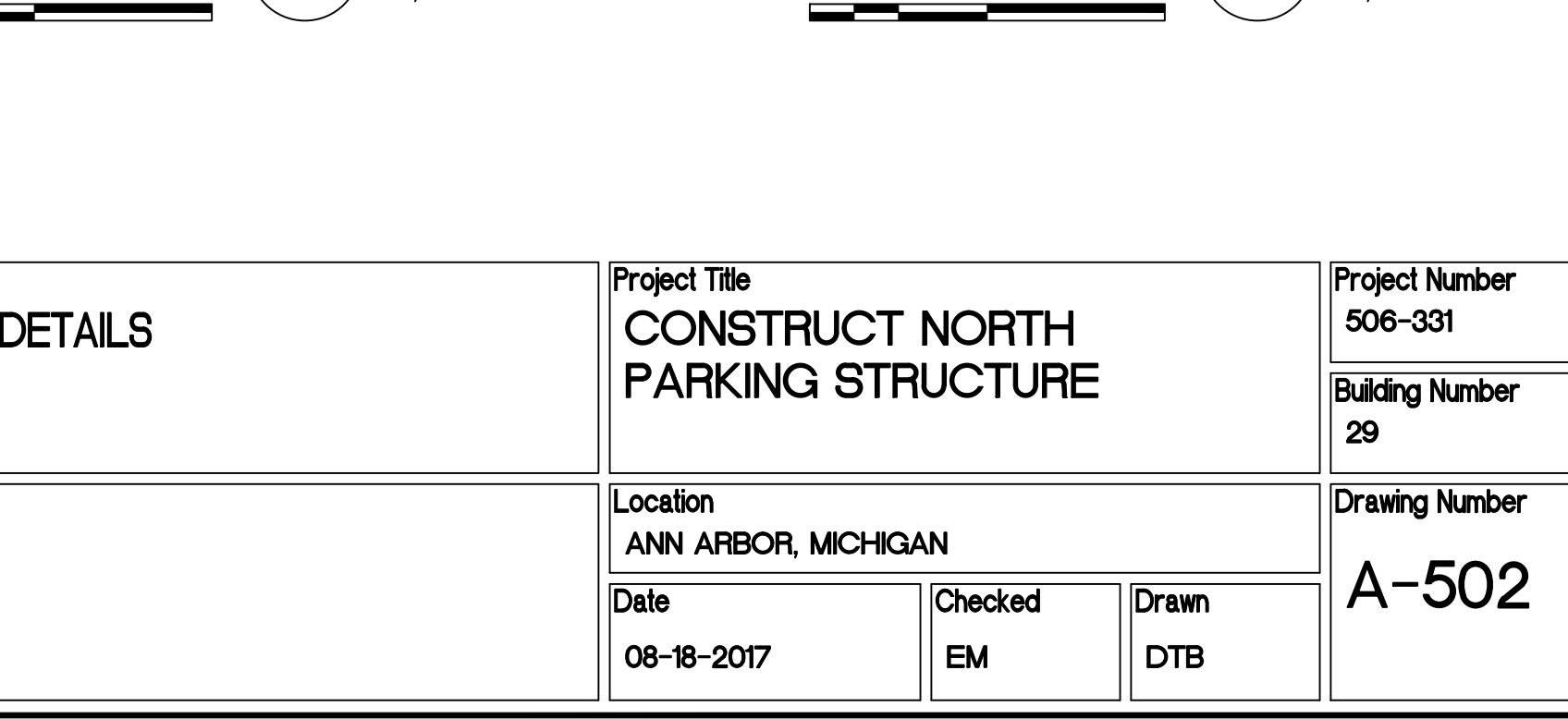
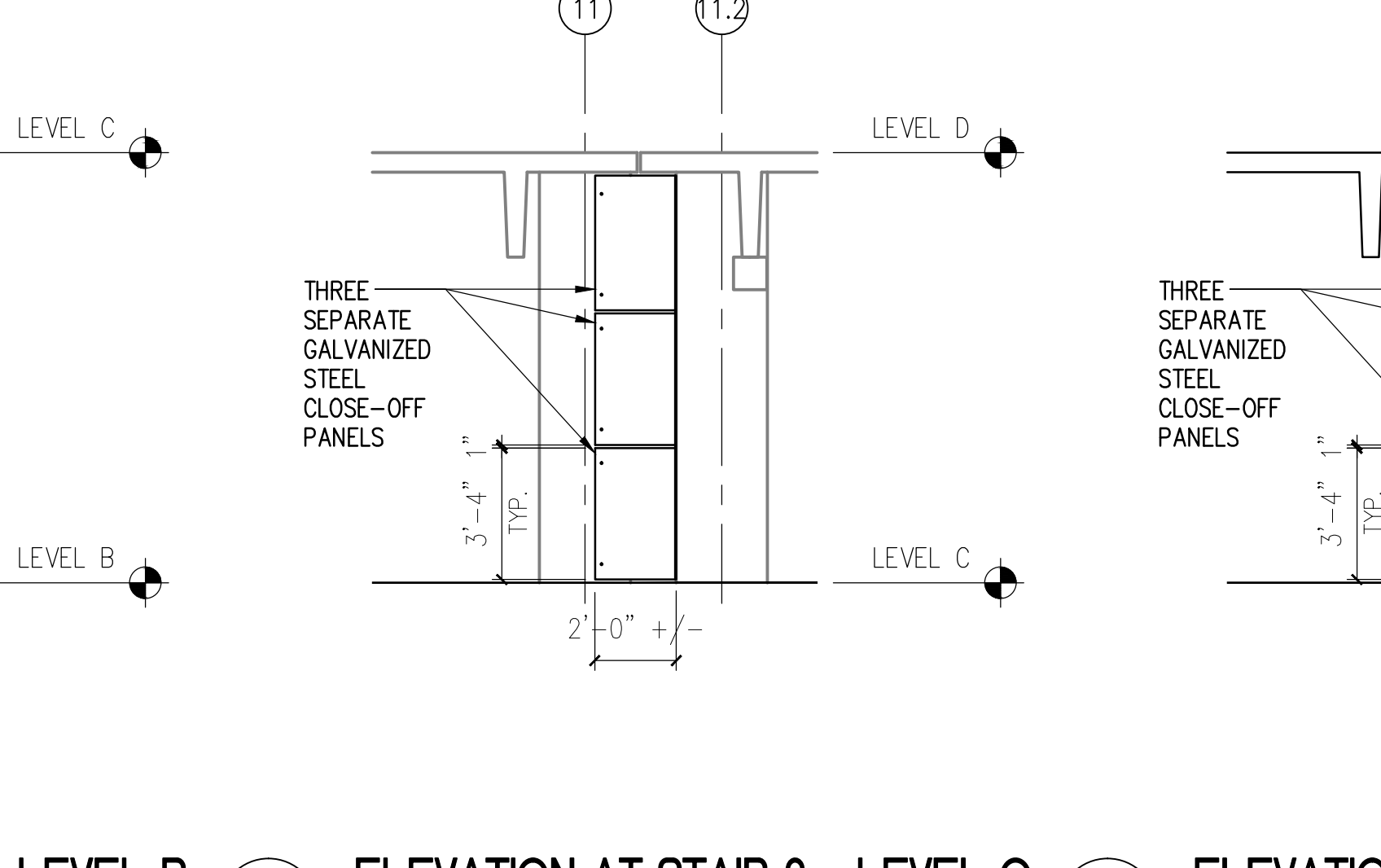
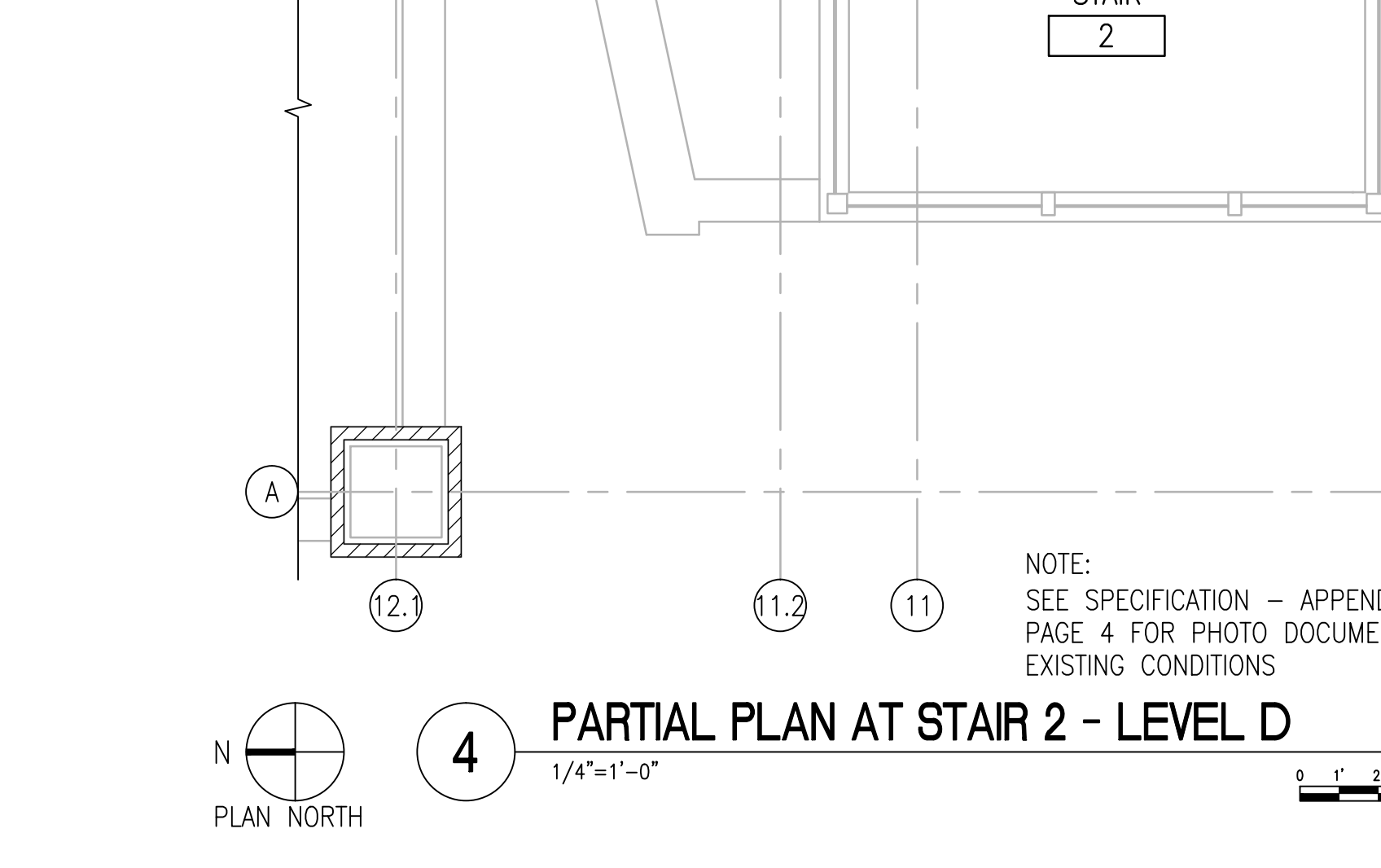
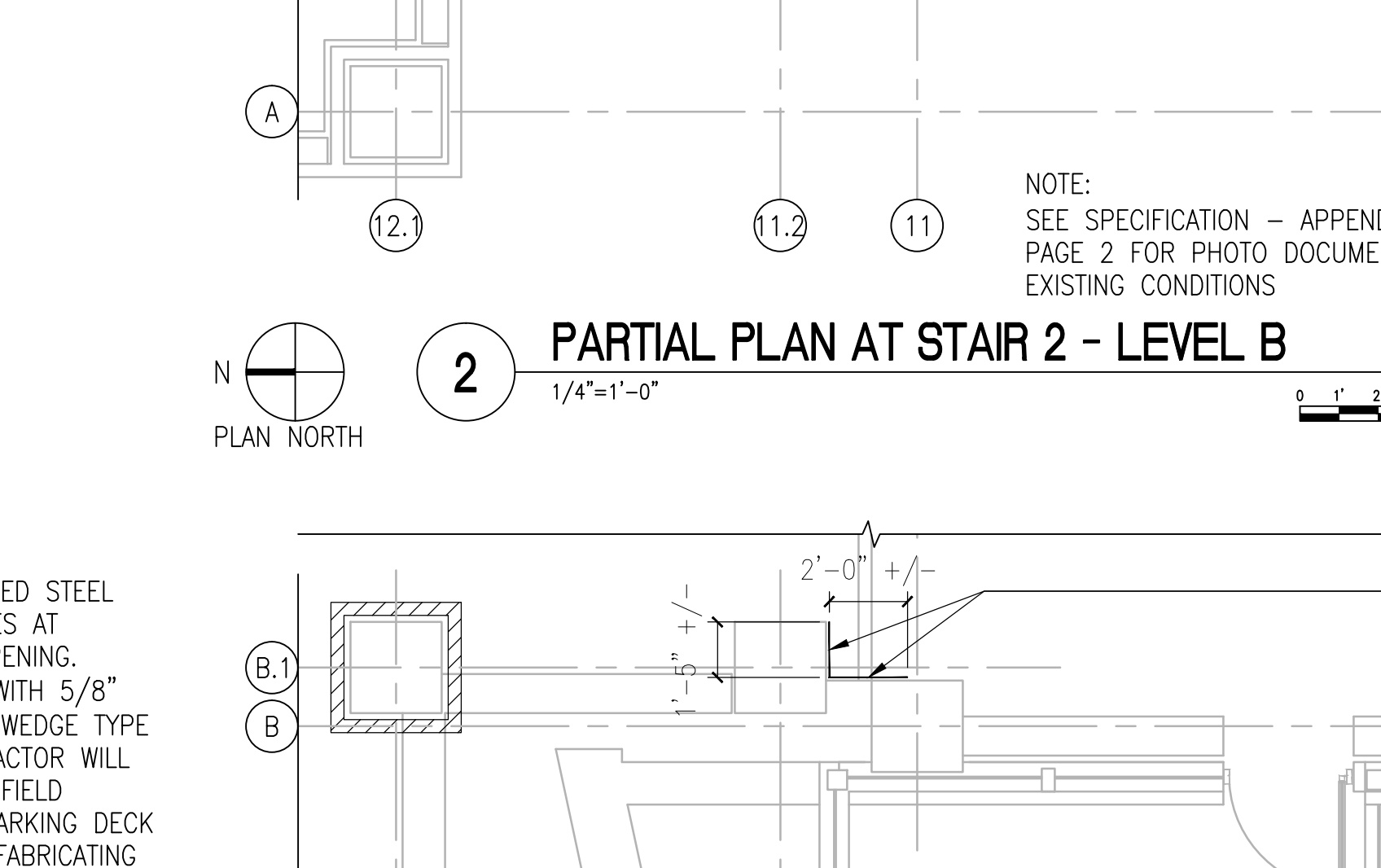
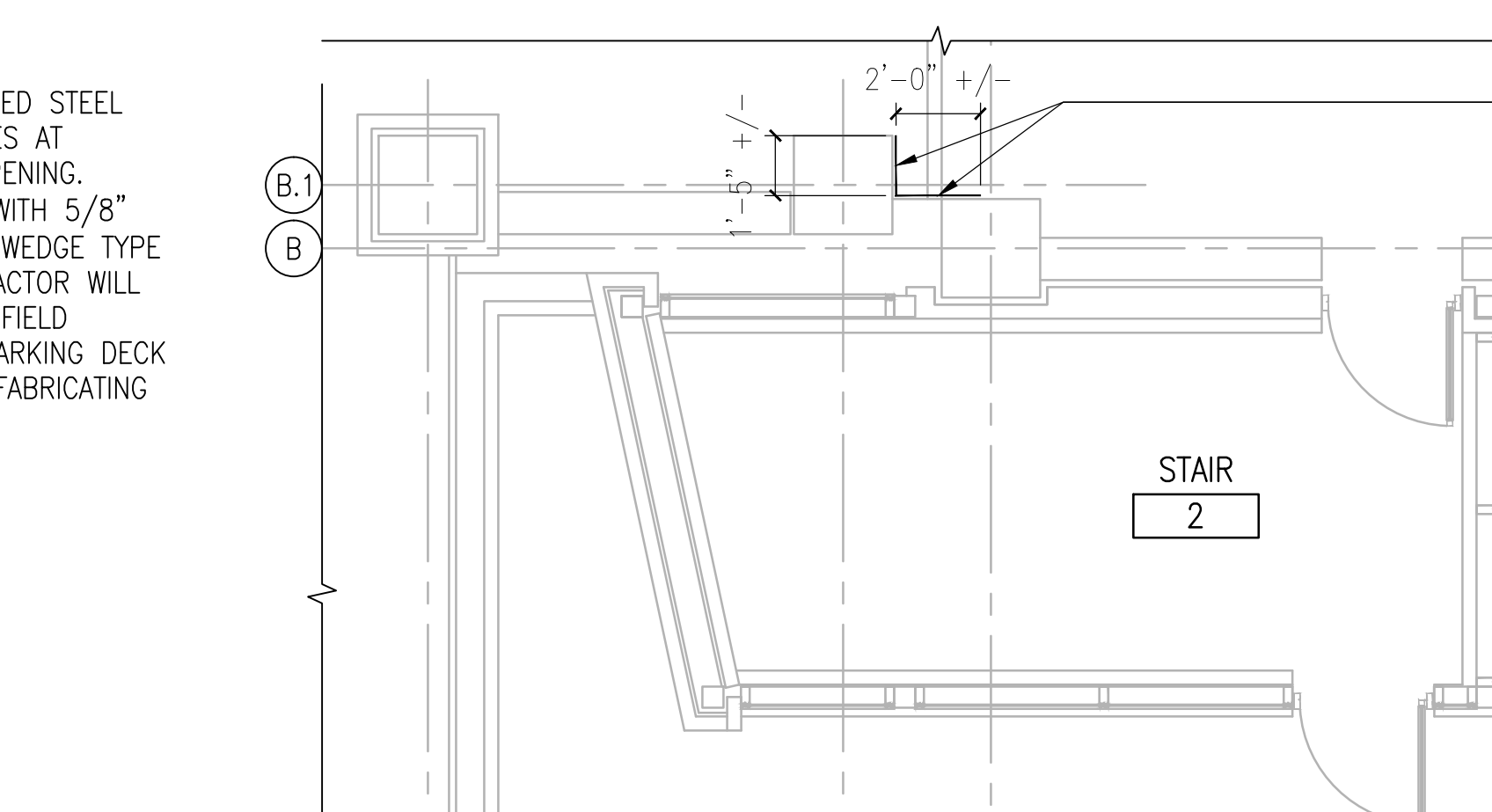
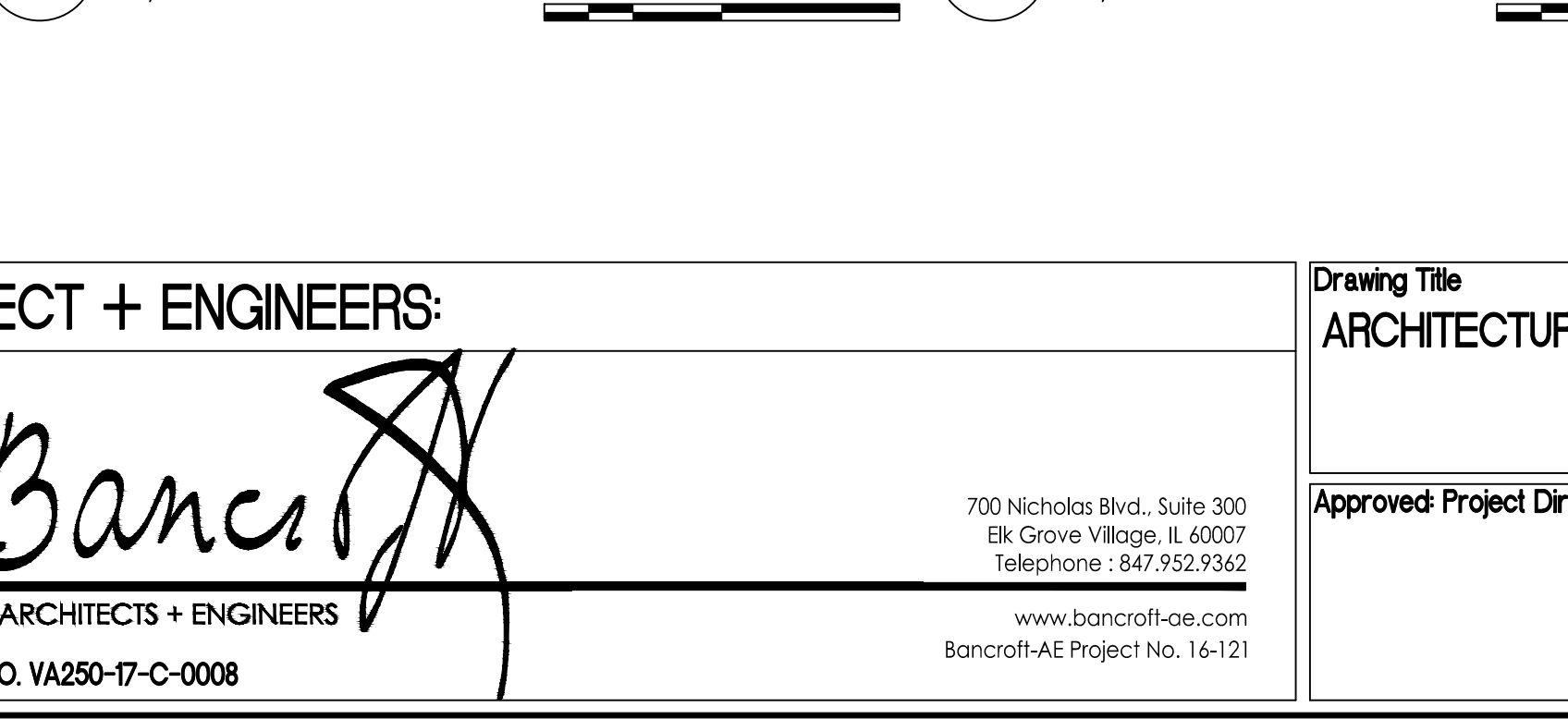
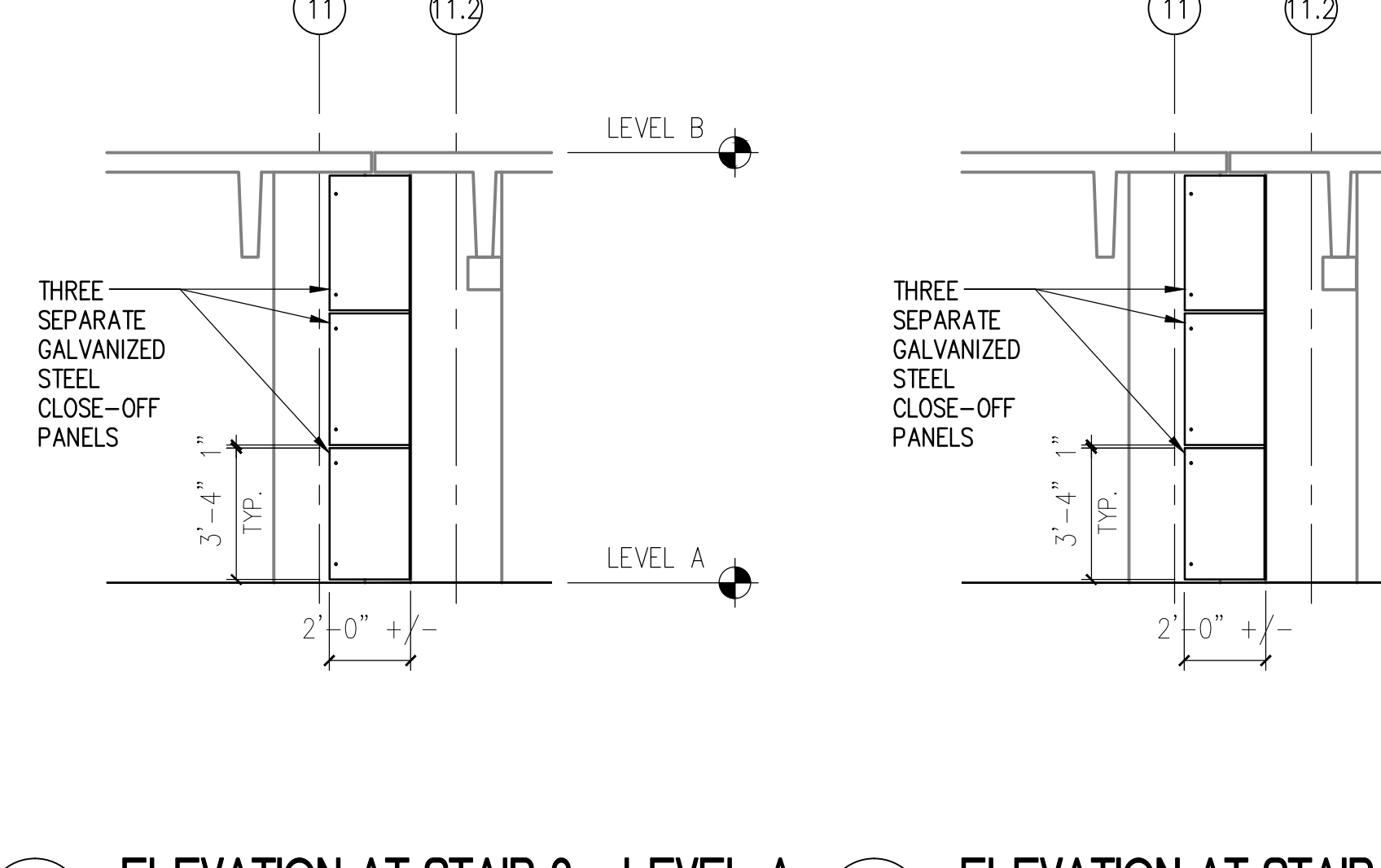
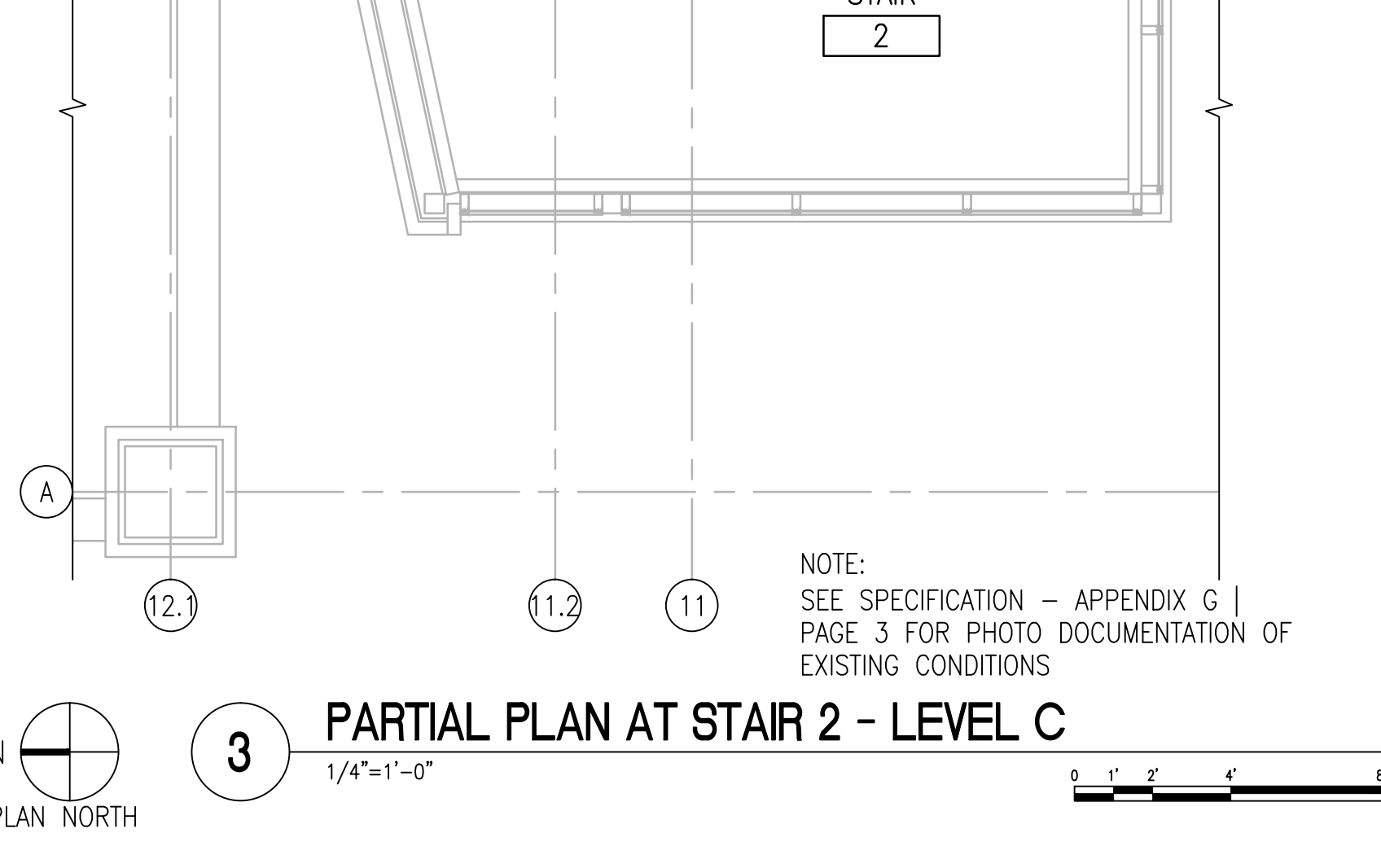
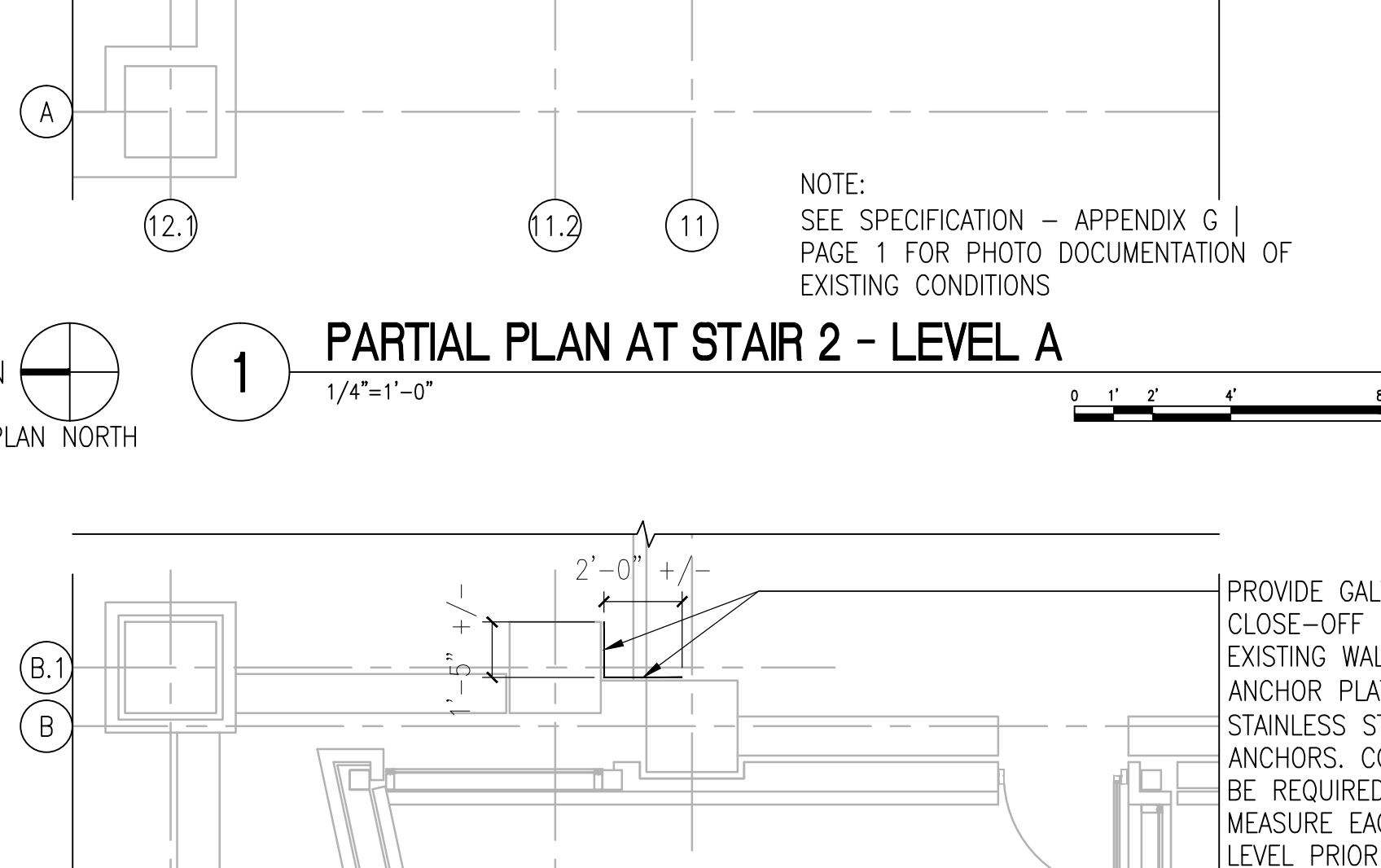
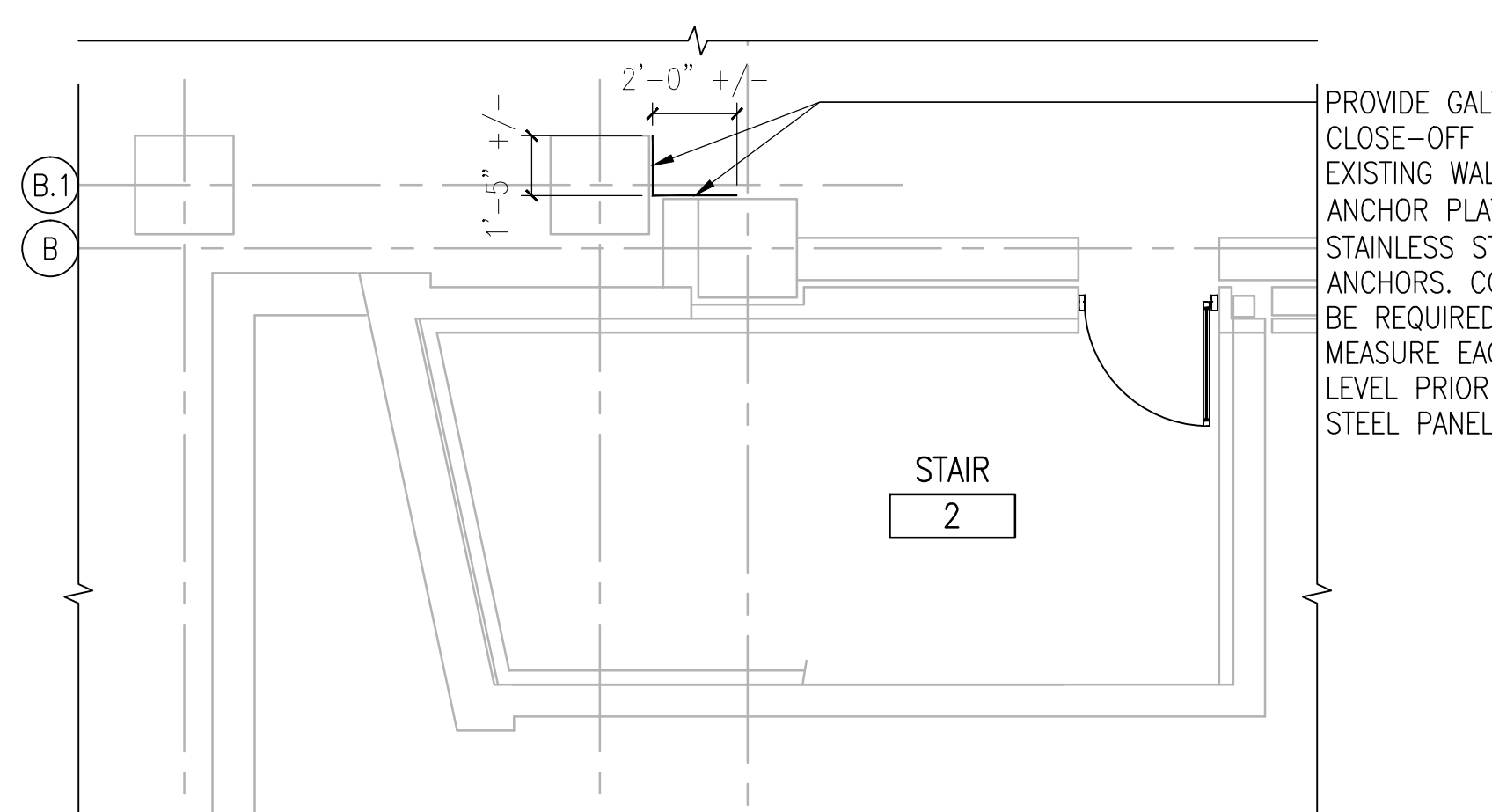
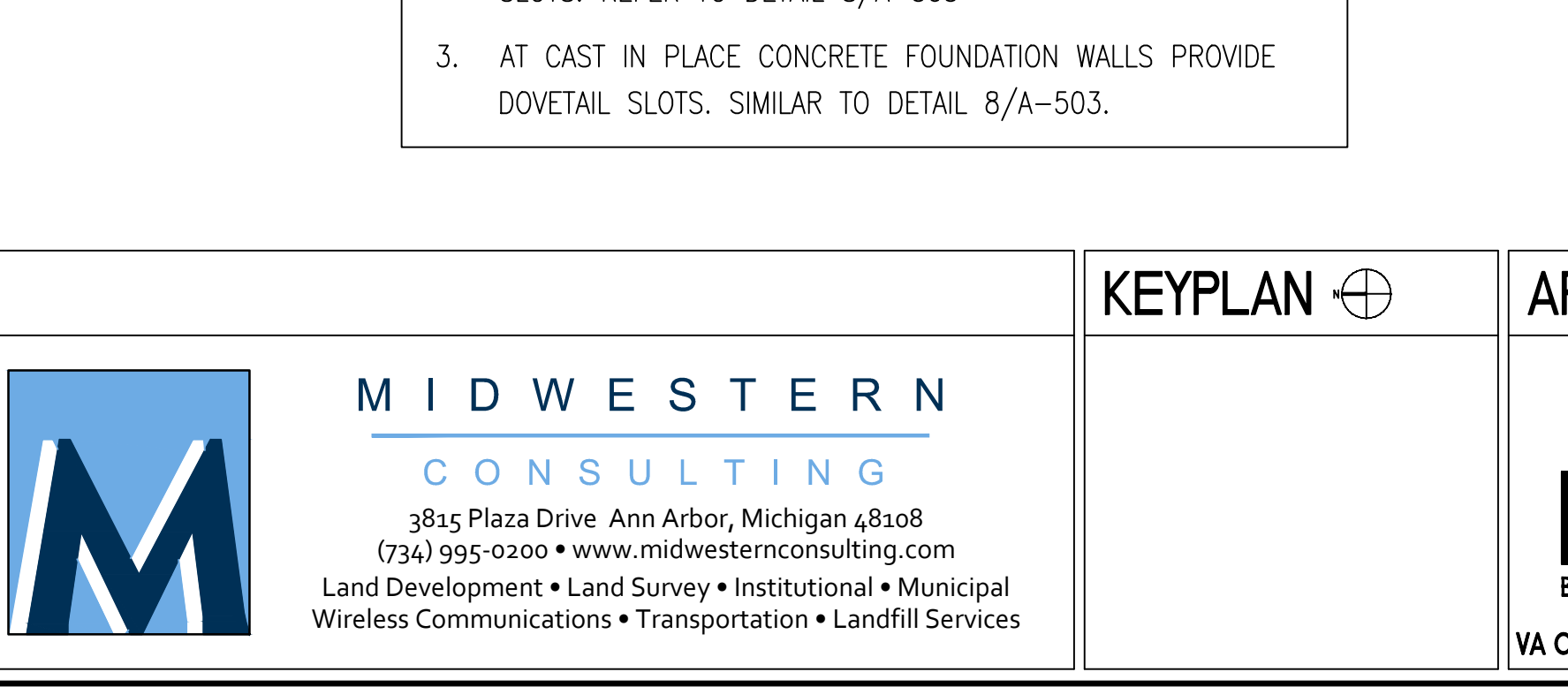
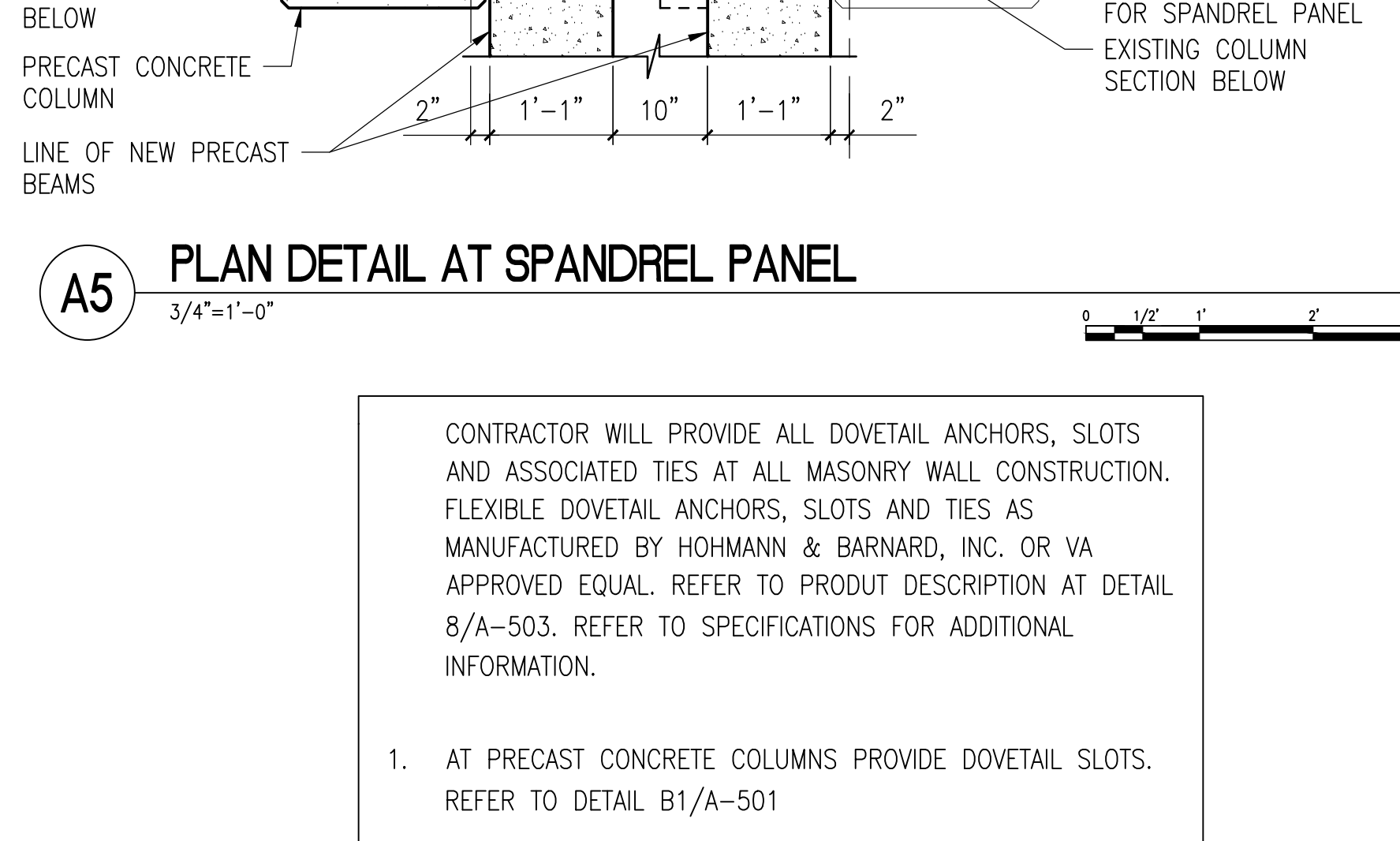
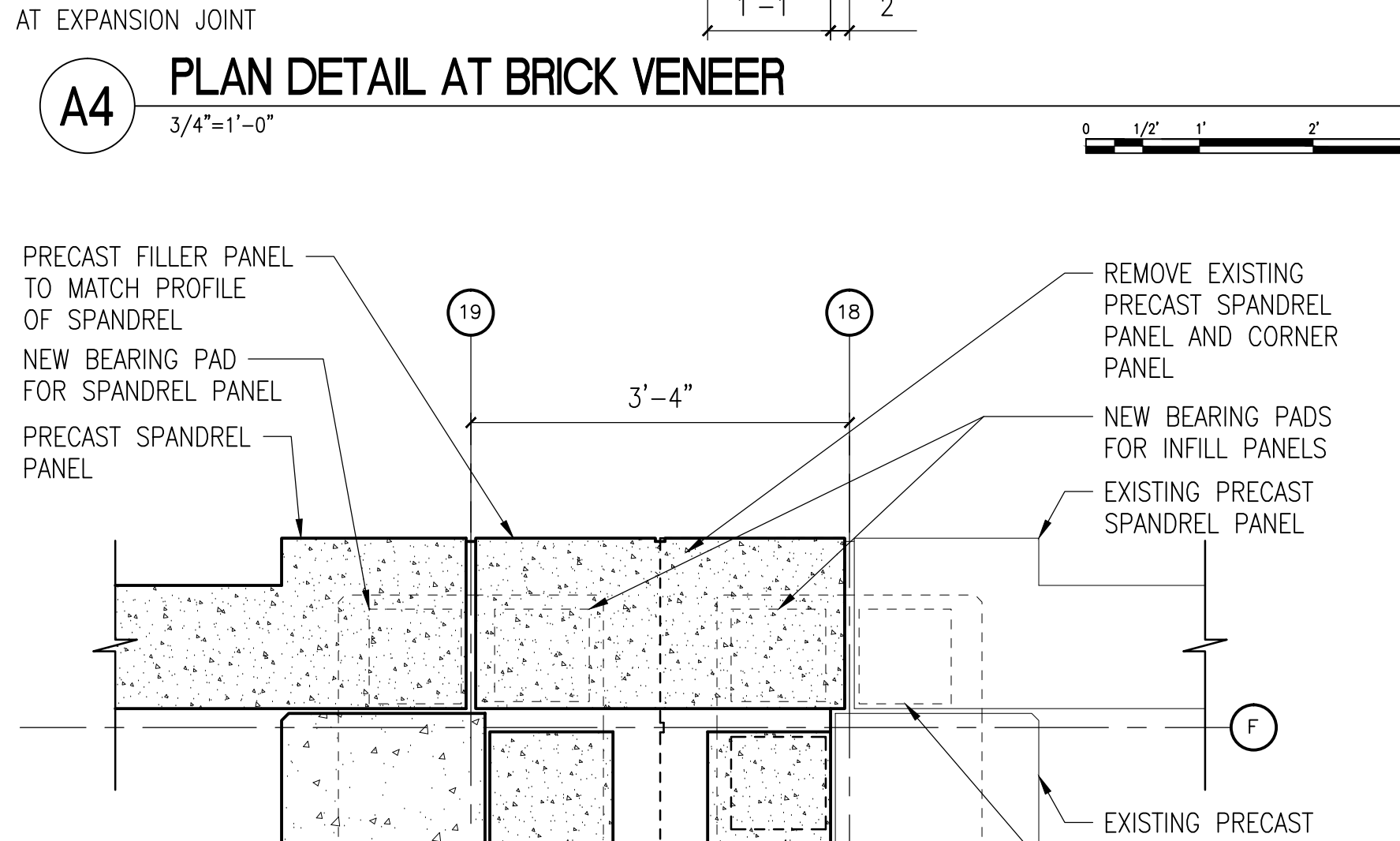
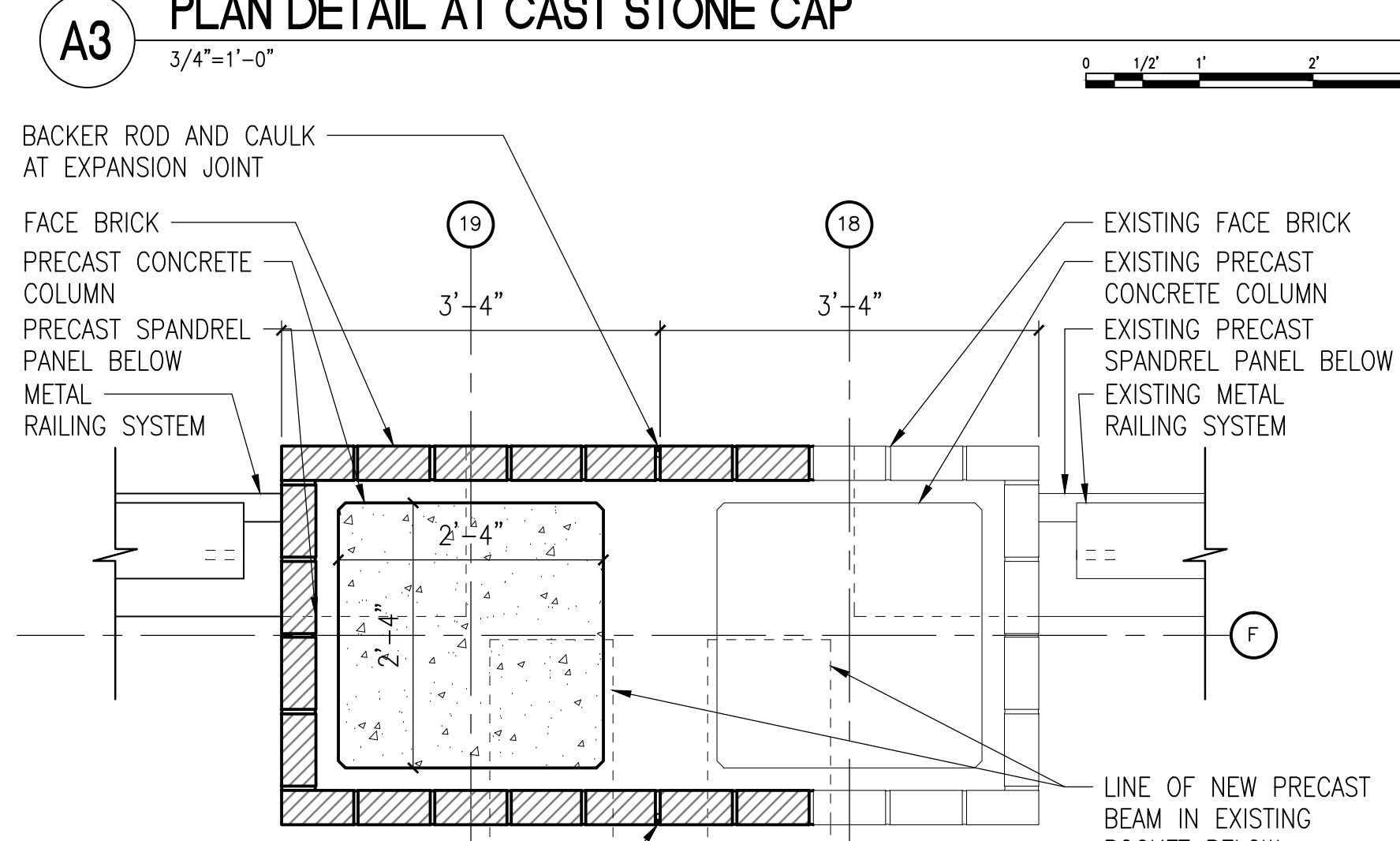
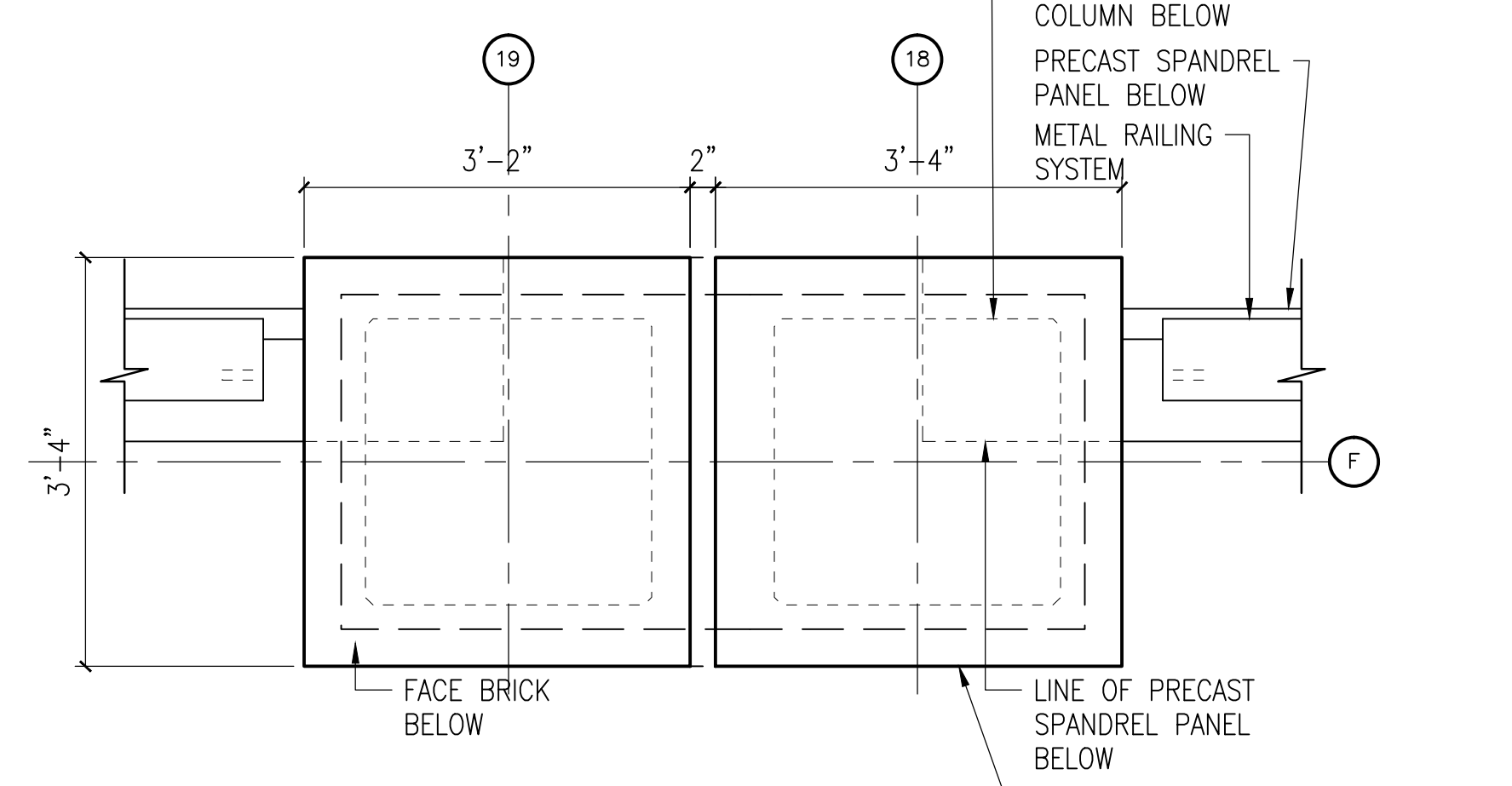
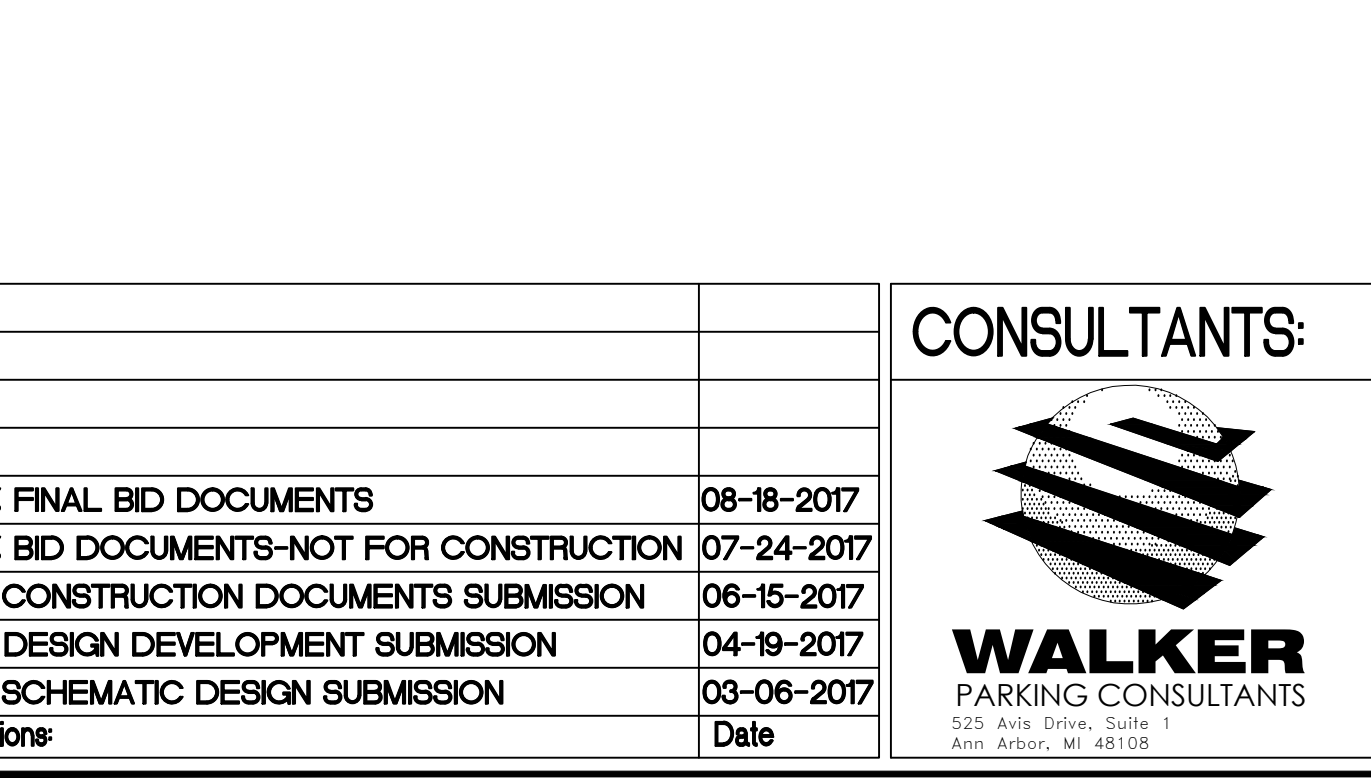
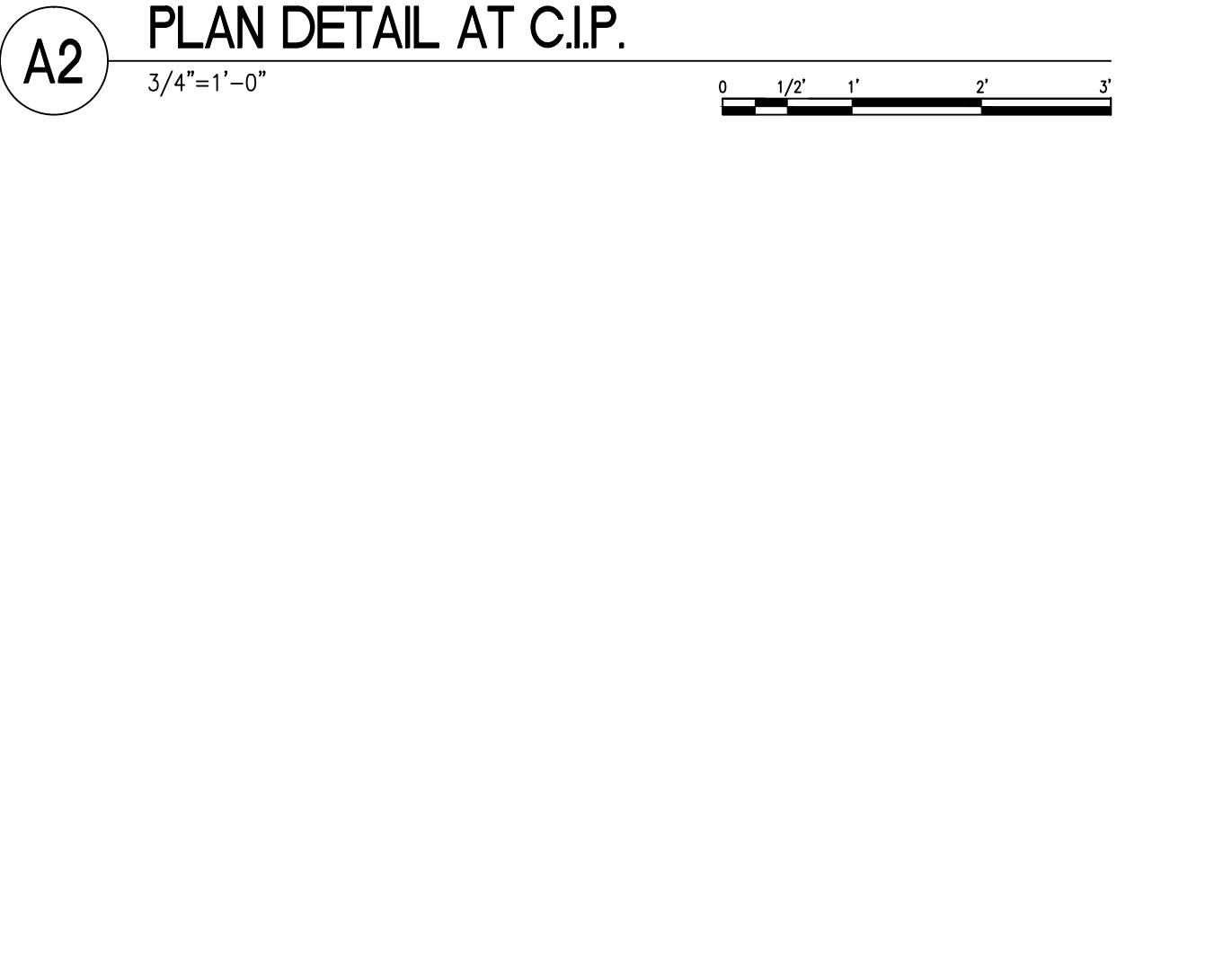
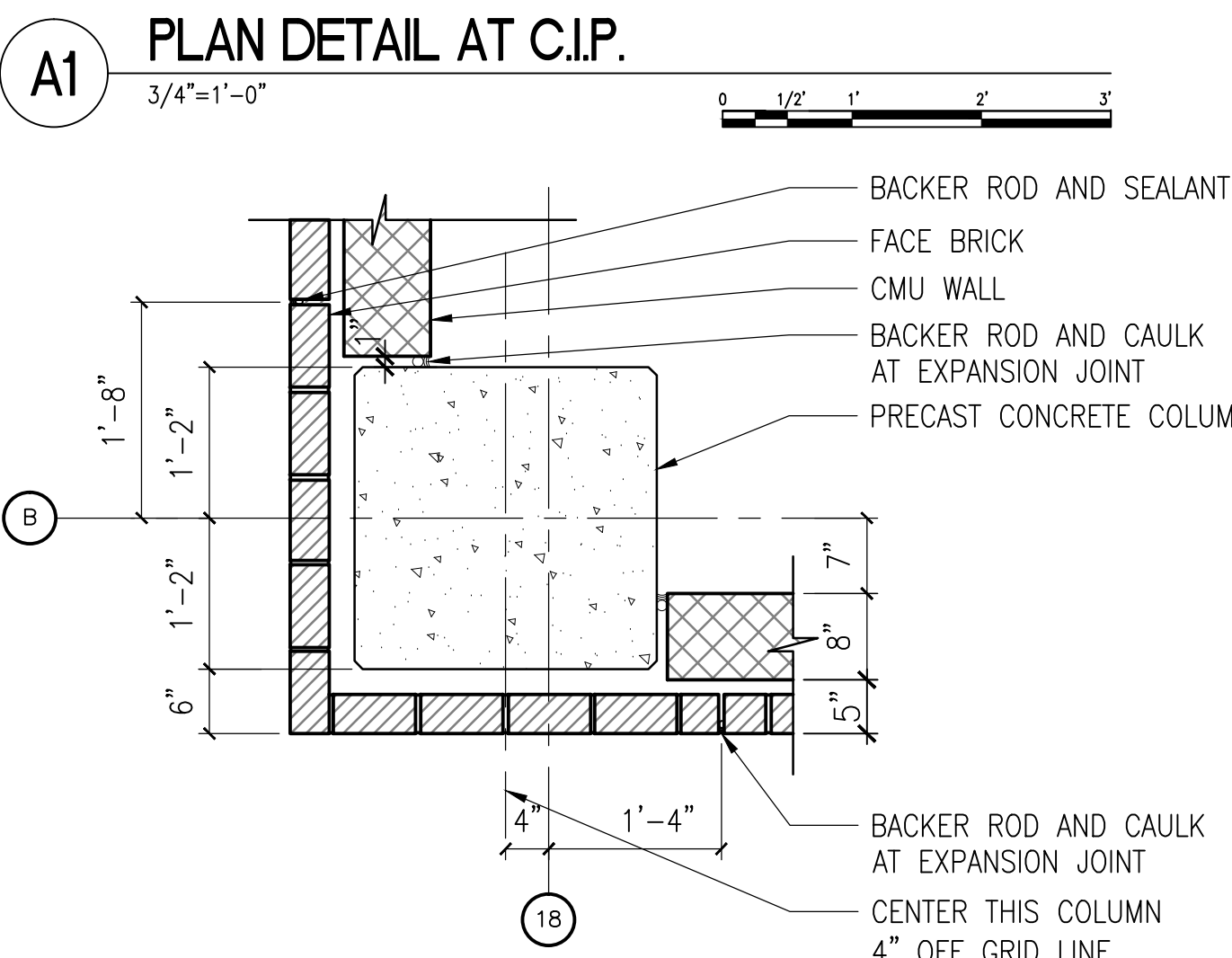
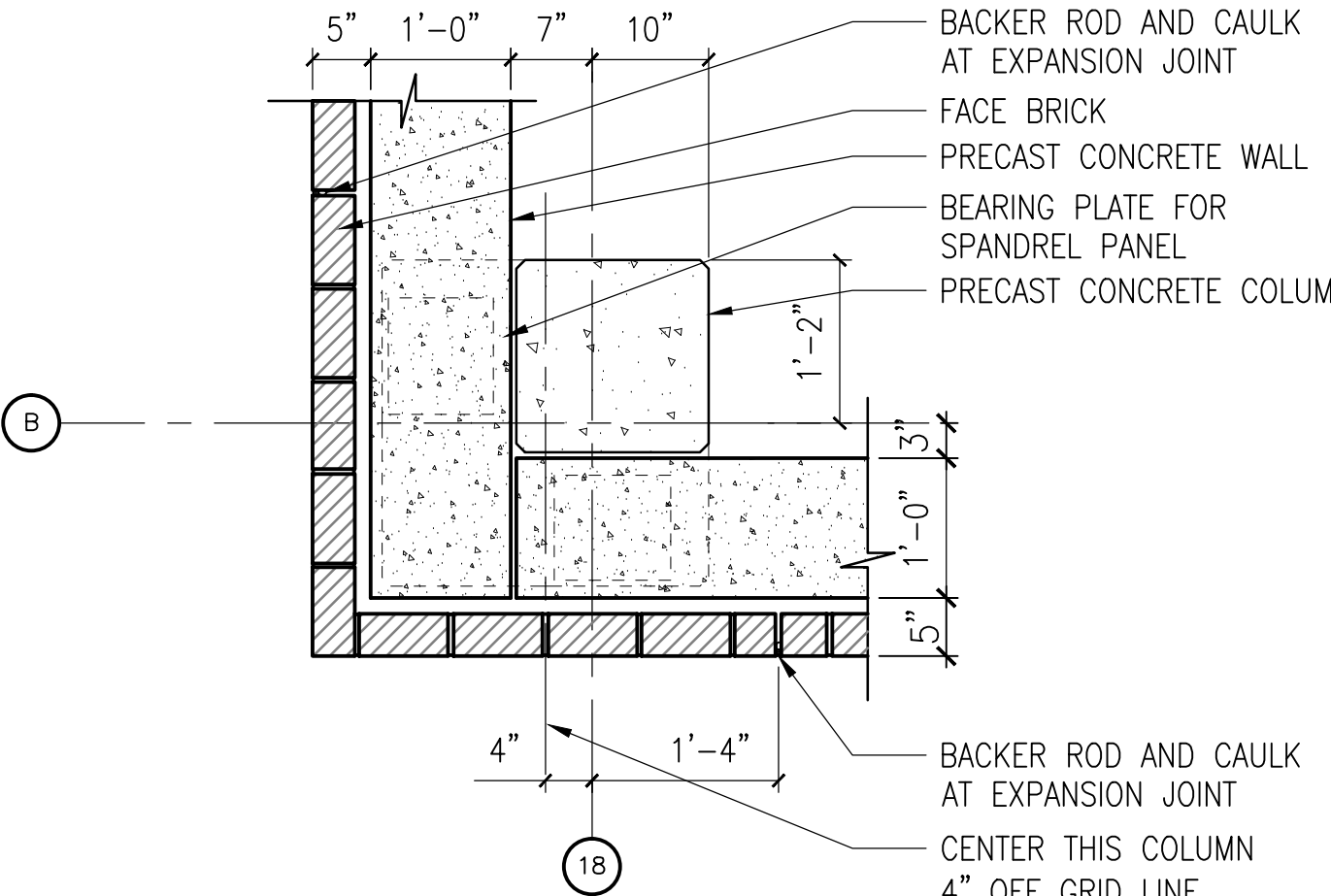


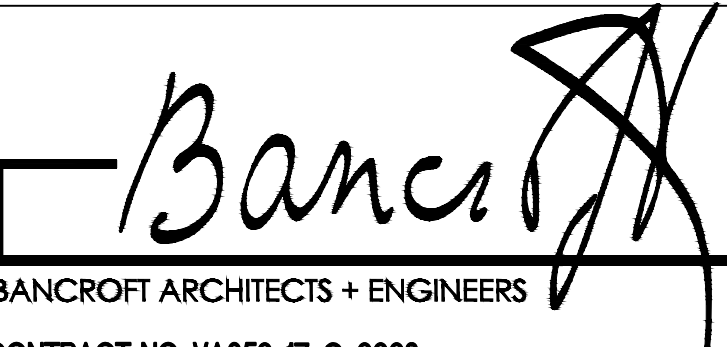


one eighth inch = one foot
one quarter inch = one foot
three eighths inch = one foot
one half inch = one foot
three quarters inch = one foot
one inch = one foot
one and one half inches = one foot
two inches = one foot
three inches = one foot
four inches = one foot
five inches = one foot
six inches = one foot
seven inches = one foot
eight inches = one foot
nine inches = one foot
ten inches = one foot
eleven inches = one foot
twelve inches = one foot
thirteen inches = one foot
fourteen inches = one foot
fifteen inches = one foot
sixteen inches = one foot
seventeen inches = one foot
eighteen inches = one foot
nineteen inches = one foot
twenty inches = one foot
twenty one inches = one foot
twenty two inches = one foot
twenty three inches = one foot
twenty four inches = one foot
twenty five inches = one foot
twenty six inches = one foot
twenty seven inches = one foot
twenty eight inches = one foot
twenty nine inches = one foot
thirty inches = one foot
thirty one inches = one foot
thirty two inches = one foot
thirty three inches = one foot
thirty four inches = one foot
thirty five inches = one foot
thirty six inches = one foot
thirty seven inches = one foot
thirty eight inches = one foot
thirty nine inches = one foot
forty inches = one foot
forty one inches = one foot
forty two inches = one foot
forty three inches = one foot
forty four inches = one foot
forty five inches = one foot
forty six inches = one foot
forty seven inches = one foot
forty eight inches = one foot
forty nine inches = one foot
fifty inches = one foot
fifty one inches = one foot
fifty two inches = one foot
fifty three inches = one foot
fifty four inches = one foot
fifty five inches = one foot
fifty six inches = one foot
fifty seven inches = one foot
fifty eight inches = one foot
fifty nine inches = one foot
sixty inches = one foot
sixty one inches = one foot
sixty two inches = one foot
sixty three inches = one foot
sixty four inches = one foot
sixty five inches = one foot
sixty six inches = one foot
sixty seven inches = one foot
sixty eight inches = one foot
sixty nine inches = one foot
seventy inches = one foot
seventy one inches = one foot
seventy two inches = one foot
seventy three inches = one foot
seventy four inches = one foot
seventy five inches = one foot
seventy six inches = one foot
seventy seven inches = one foot
seventy eight inches = one foot
seventy nine inches = one foot
eighty inches = one foot
eighty one inches = one foot
eighty two inches = one foot
eighty three inches = one foot
eighty four inches = one foot
eighty five inches = one foot
eighty six inches = one foot
eighty seven inches = one foot
eighty eight inches = one foot
eighty nine inches = one foot
ninety inches = one foot
ninety one inches = one foot
ninety two inches = one foot
ninety three inches = one foot
ninety four inches = one foot
ninety five inches = one foot
ninety six inches = one foot
ninety seven inches = one foot
ninety eight inches = one foot
ninety nine inches = one foot
one hundred inches = one foot



CONTRACTOR WILL PROVIDE ALL DOVETAIL ANCHORS, SLOTS AND ASSOCIATED TIES AT ALL MASONRY WALL CONSTRUCTION. FLEXIBLE DOVETAIL ANCHORS, SLOTS AND TIES AS MANUFACTURED BY HOHMANN & BARNARD, INC. OR VA APPROVED EQUAL. REFER TO PRODUCT DESCRIPTION AT DETAIL 8/A-503. REFER TO SPECIFICATIONS FOR ADDITIONAL INFORMATION.

- AT PRECAST CONCRETE COLUMNS PROVIDE DOVETAIL SLOTS. REFER TO DETAIL B1/A-501
- AT PRECAST CONCRETE WALL PANELS PROVIDE DOVETAIL SLOTS. REFER TO DETAIL 8/A-503
- AT CAST IN PLACE CONCRETE FOUNDATION WALLS PROVIDE DOVETAIL SLOTS. SIMILAR TO DETAIL 8/A-503.

CONSULTANTS:		KEYPLAN		ARCHITECT + ENGINEERS:		Drawing Title		Project Title		Project Number		Office of Construction and Facilities Management Department of Veterans Affairs	
						ARCHITECTURAL DETAILS		CONSTRUCT NORTH PARKING STRUCTURE		506-331			
100% FINAL BID DOCUMENTS 08-18-2017		3815 Plaza Drive Ann Arbor, Michigan 48108 (734) 995-0200 • www.midwesternconsulting.com Land Development • Land Survey • Institutional • Municipal Wireless Communications • Transportation • Landfill Services		700 Nicholas Blvd., Suite 300 Elk Grove Village, IL 60007 Telephone : 847.952.9342 www.bancroft-ae.com Bancroft-AE Project No. 14-121		Approved Project Director		Location ANN ARBOR, MICHIGAN		Building Number 29			
100% BID DOCUMENTS-NOT FOR CONSTRUCTION 07-24-2017								Date 08-18-2017		Checked EM			
95% CONSTRUCTION DOCUMENTS SUBMISSION 06-15-2017										Drawing Number A-502			
65% DESIGN DEVELOPMENT SUBMISSION 04-19-2017													
35% SCHEMATIC DESIGN SUBMISSION 03-06-2017													
Revisions													