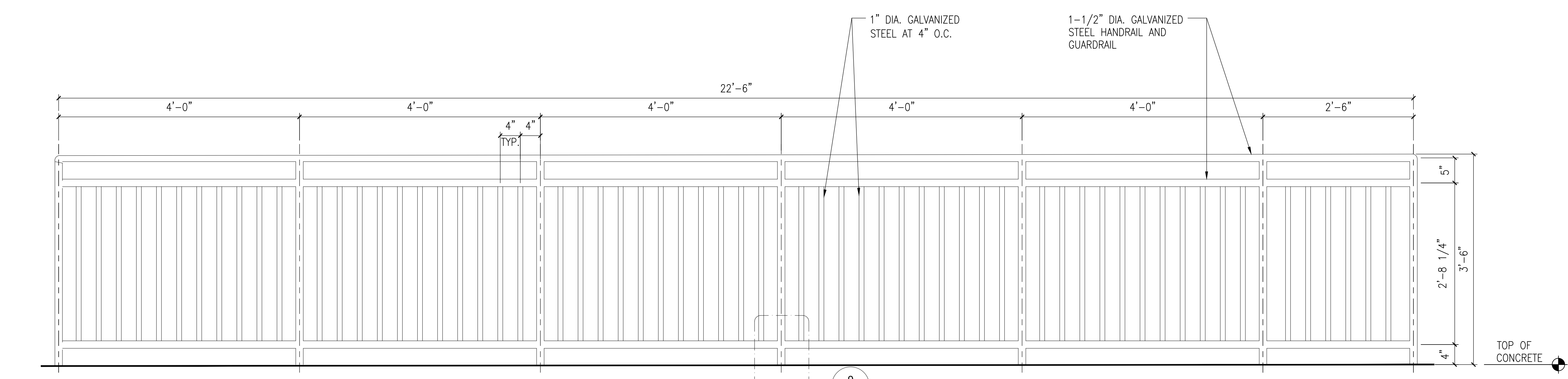
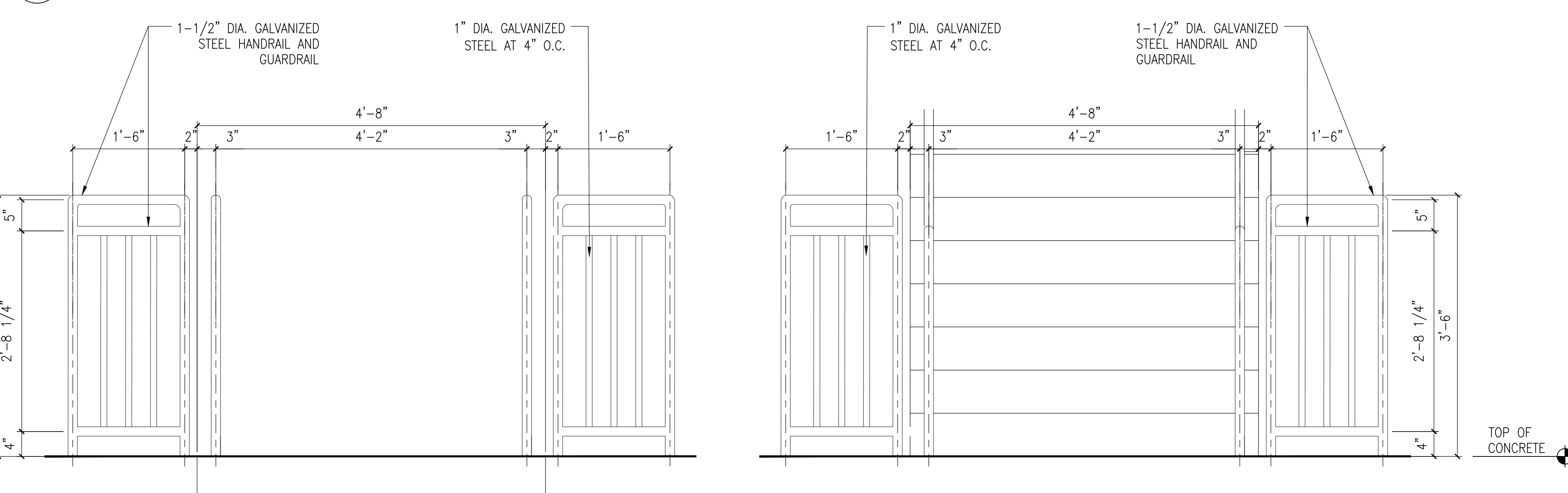


one eighth inch = one foot
one quarter inch = one foot
three eighths inch = one foot
one half inch = one foot
three quarters inch = one foot
one inch = one foot
one and one half inches = one foot
two inches = one foot
three inches = one foot
four inches = one foot
five inches = one foot
six inches = one foot
seven inches = one foot
eight inches = one foot
nine inches = one foot
ten inches = one foot
eleven inches = one foot
twelve inches = one foot
thirteen inches = one foot
fourteen inches = one foot
fifteen inches = one foot
sixteen inches = one foot
seventeen inches = one foot
eighteen inches = one foot
nineteen inches = one foot
twenty inches = one foot
twenty one inches = one foot
twenty two inches = one foot
twenty three inches = one foot
twenty four inches = one foot
twenty five inches = one foot
twenty six inches = one foot
twenty seven inches = one foot
twenty eight inches = one foot
twenty nine inches = one foot
thirty inches = one foot
thirty one inches = one foot
thirty two inches = one foot
thirty three inches = one foot
thirty four inches = one foot
thirty five inches = one foot
thirty six inches = one foot
thirty seven inches = one foot
thirty eight inches = one foot
thirty nine inches = one foot
forty inches = one foot
forty one inches = one foot
forty two inches = one foot
forty three inches = one foot
forty four inches = one foot
forty five inches = one foot
forty six inches = one foot
forty seven inches = one foot
forty eight inches = one foot
forty nine inches = one foot
fifty inches = one foot
fifty one inches = one foot
fifty two inches = one foot
fifty three inches = one foot
fifty four inches = one foot
fifty five inches = one foot
fifty six inches = one foot
fifty seven inches = one foot
fifty eight inches = one foot
fifty nine inches = one foot
sixty inches = one foot
sixty one inches = one foot
sixty two inches = one foot
sixty three inches = one foot
sixty four inches = one foot
sixty five inches = one foot
sixty six inches = one foot
sixty seven inches = one foot
sixty eight inches = one foot
sixty nine inches = one foot
seventy inches = one foot
seventy one inches = one foot
seventy two inches = one foot
seventy three inches = one foot
seventy four inches = one foot
seventy five inches = one foot
seventy six inches = one foot
seventy seven inches = one foot
seventy eight inches = one foot
seventy nine inches = one foot
eighty inches = one foot
eighty one inches = one foot
eighty two inches = one foot
eighty three inches = one foot
eighty four inches = one foot
eighty five inches = one foot
eighty six inches = one foot
eighty seven inches = one foot
eighty eight inches = one foot
eighty nine inches = one foot
ninety inches = one foot
ninety one inches = one foot
ninety two inches = one foot
ninety three inches = one foot
ninety four inches = one foot
ninety five inches = one foot
ninety six inches = one foot
ninety seven inches = one foot
ninety eight inches = one foot
ninety nine inches = one foot
one hundred inches = one foot

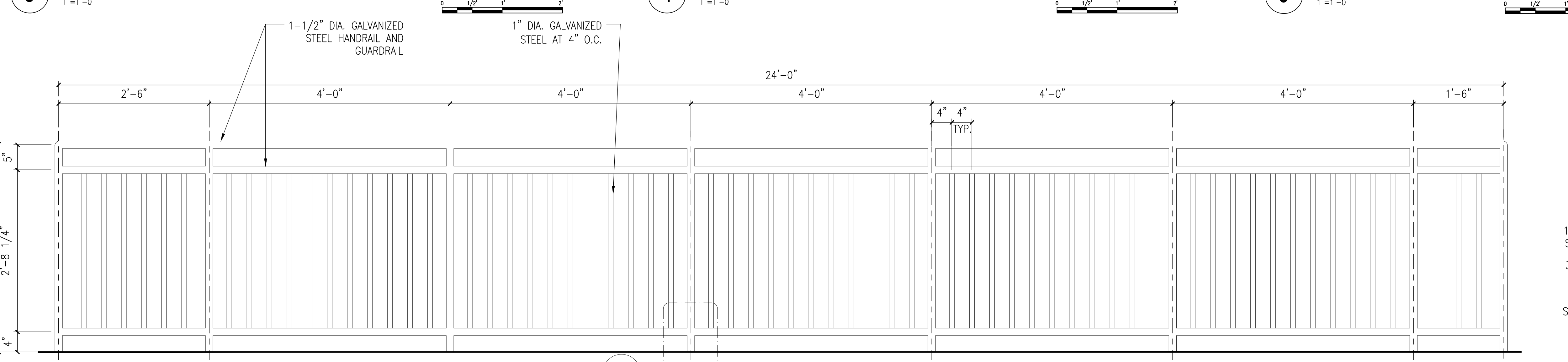


1 STAIR RAILING ELEVATION
1"=1'-0"

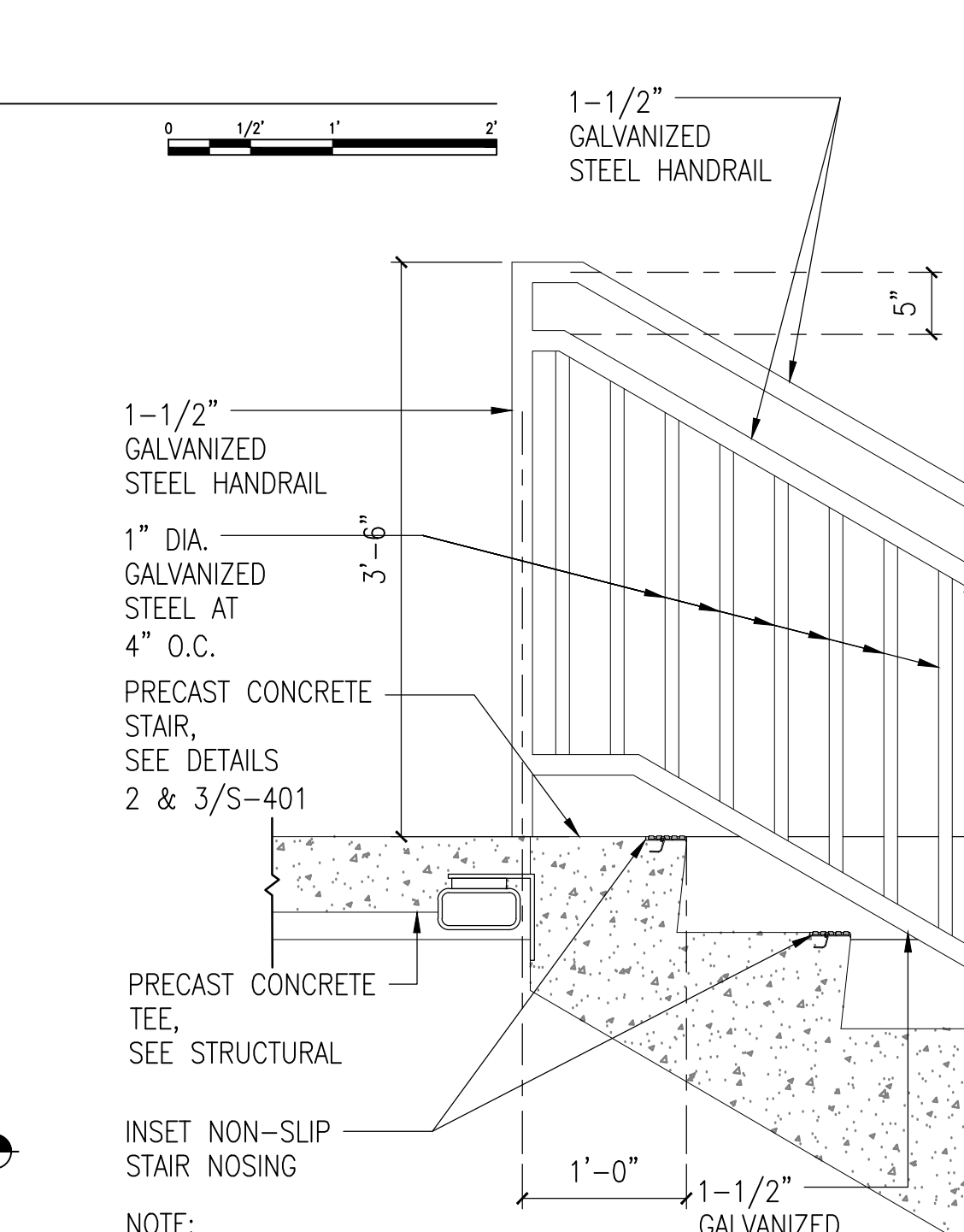


3 STAIR RAILING ELEVATION
1"=1'-0"

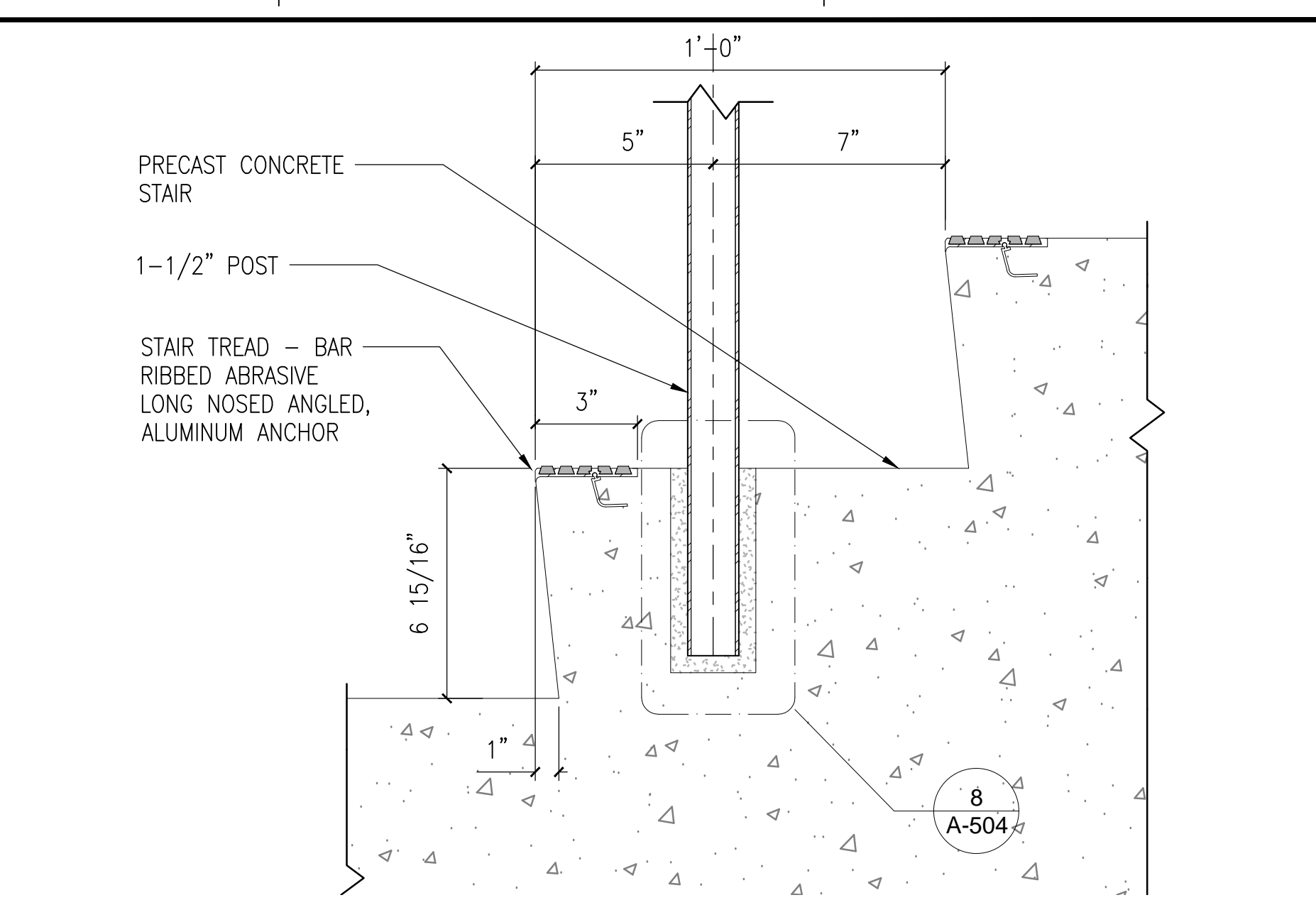
4 STAIR RAILING ELEVATION
1"=1'-0"



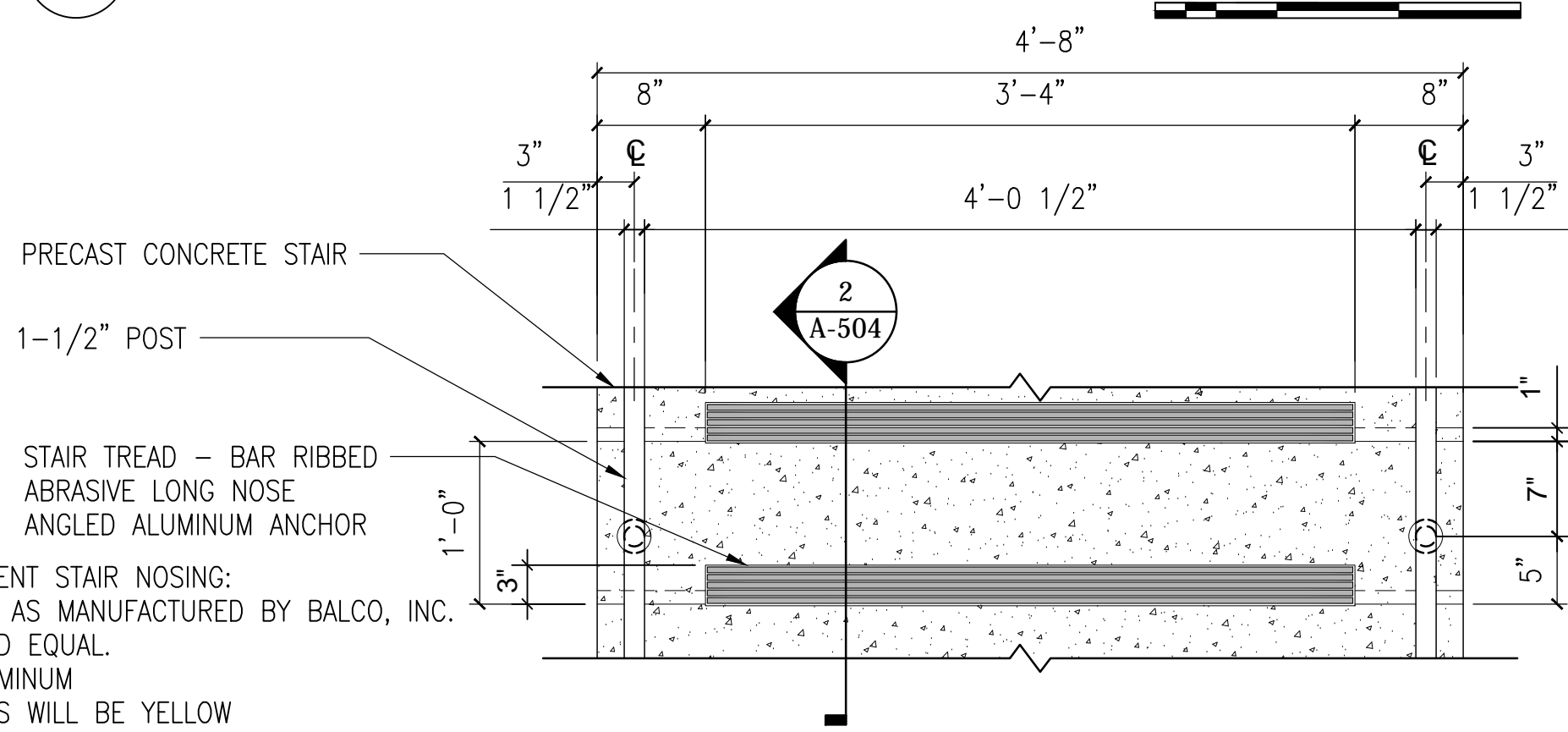
7 STAIR RAILING ELEVATION
1"=1'-0"



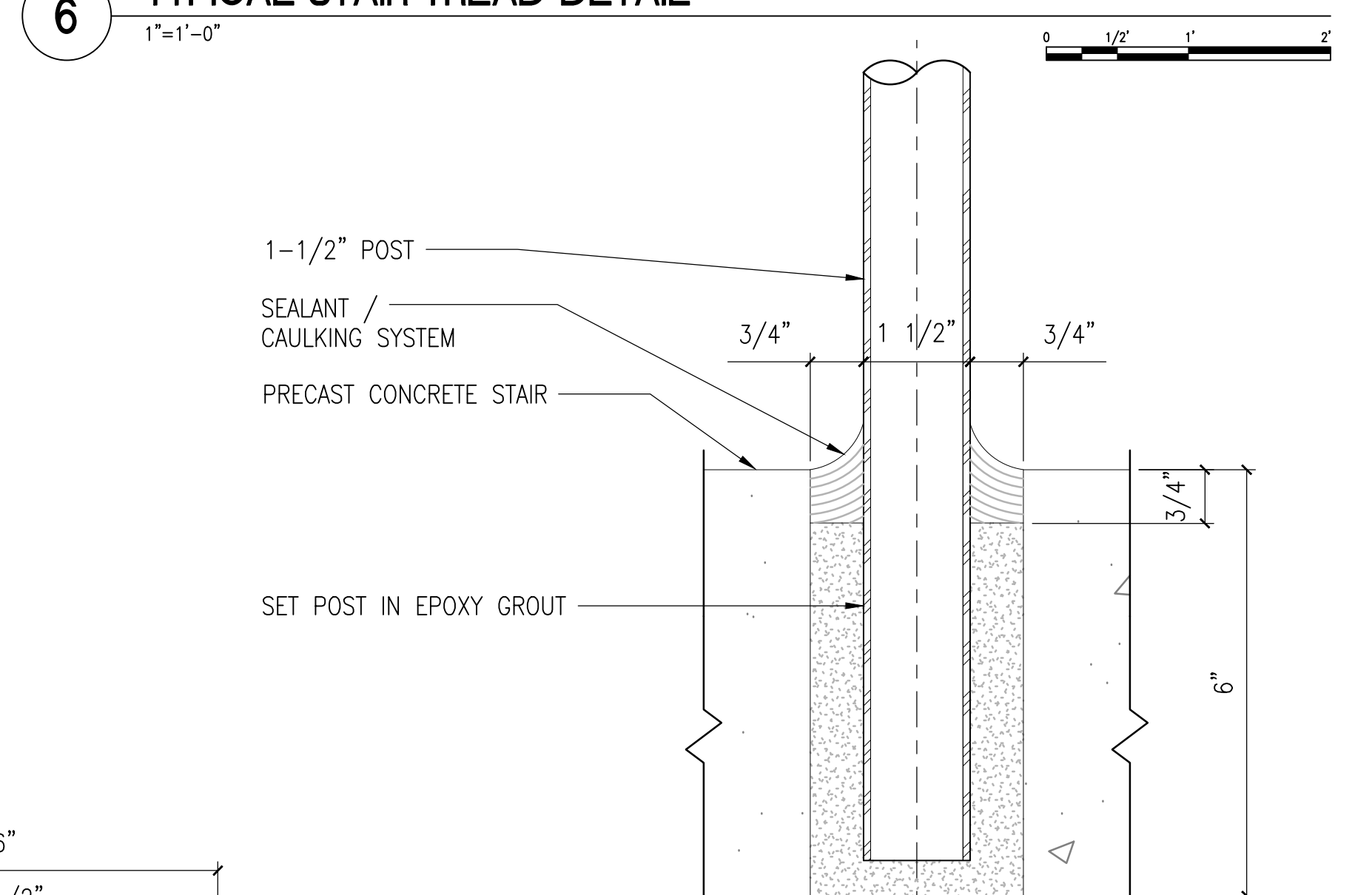
5 STAIR HEAD TYPICAL
1"=1'-0"



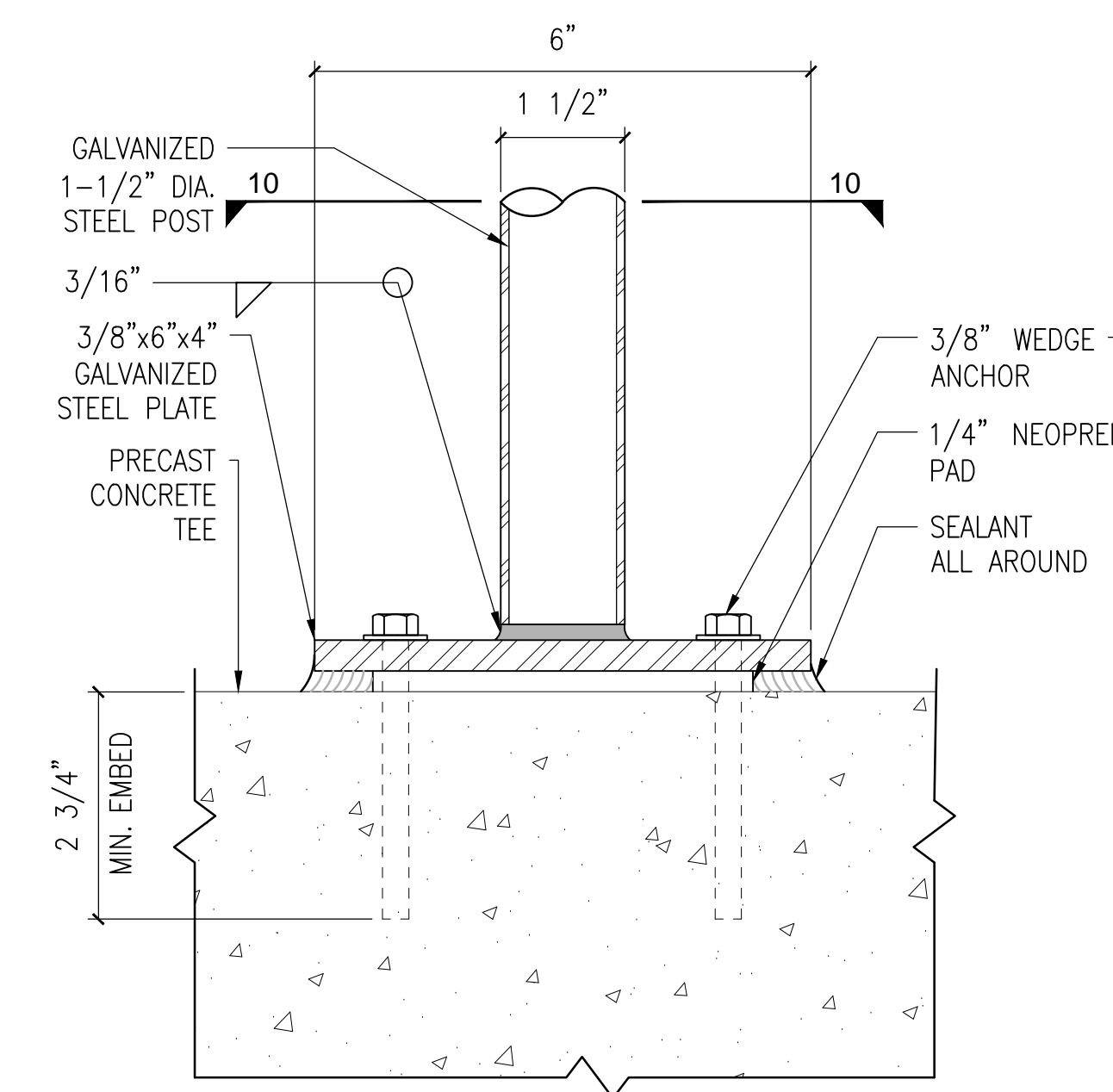
2 TYPICAL STAIR TREAD DETAIL
3"=1'-0"



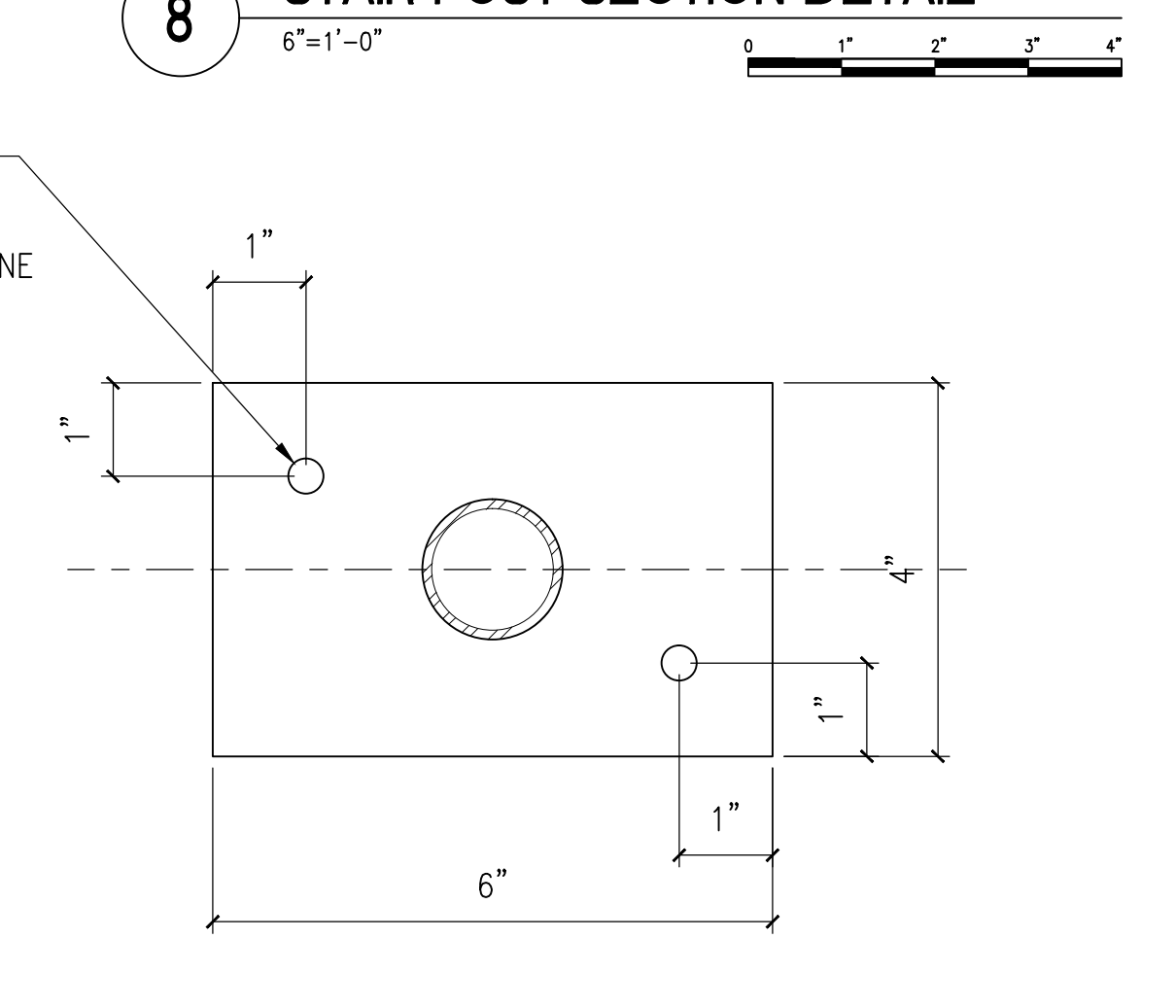
6 TYPICAL STAIR TREAD DETAIL
1"=1'-0"



8 STAIR POST SECTION DETAIL
6"=1'-0"



9 RAILING POST SECTION DETAIL
6"=1'-0"



10 RAILING POST PLAN DETAIL
6"=1'-0"

100% FINAL BID DOCUMENTS 08-18-2017 100% BID DOCUMENTS-NOT FOR CONSTRUCTION 07-24-2017 95% CONSTRUCTION DOCUMENTS SUBMISSION 06-15-2017 65% DESIGN DEVELOPMENT SUBMISSION 04-19-2017 35% SCHEMATIC DESIGN SUBMISSION 03-06-2017 Revisions: Date		CONSULTANTS: WALKER PARKING CONSULTANTS 225 Andy Drive, Suite 1 Ann Arbor, MI 48108		MIDWESTERN CONSULTING 3815 Plaza Drive Ann Arbor, Michigan 48108 (734) 995-0200 • www.midwesternconsulting.com Land Development • Land Survey • Institutional • Municipal Wireless Communications • Transportation • Landfill Services		KEYPLAN		ARCHITECT + ENGINEERS: BANCROFT ARCHITECTS + ENGINEERS 700 Nicholas Blvd., Suite 300 Eli Grove Village, IL 60007 Telephone : 847.952.9362 www.bancroft-ae.com Bancroft-AE Project No. 16-121 VA CONTRACT NO. VA250-I7-C-0008		Drawing Title STAIR DETAILS Approved Project Director		Project Title CONSTRUCT NORTH PARKING STRUCTURE Location ANN ARBOR, MICHIGAN Date 08-18-2017 Checked EM Drawn AQ		Project Number 506-331 Building Number 29 Drawing Number A-504		Office of Construction and Facilities Management 	
--	--	--	--	---	--	----------------	--	---	--	---	--	--	--	--	--	---	--