

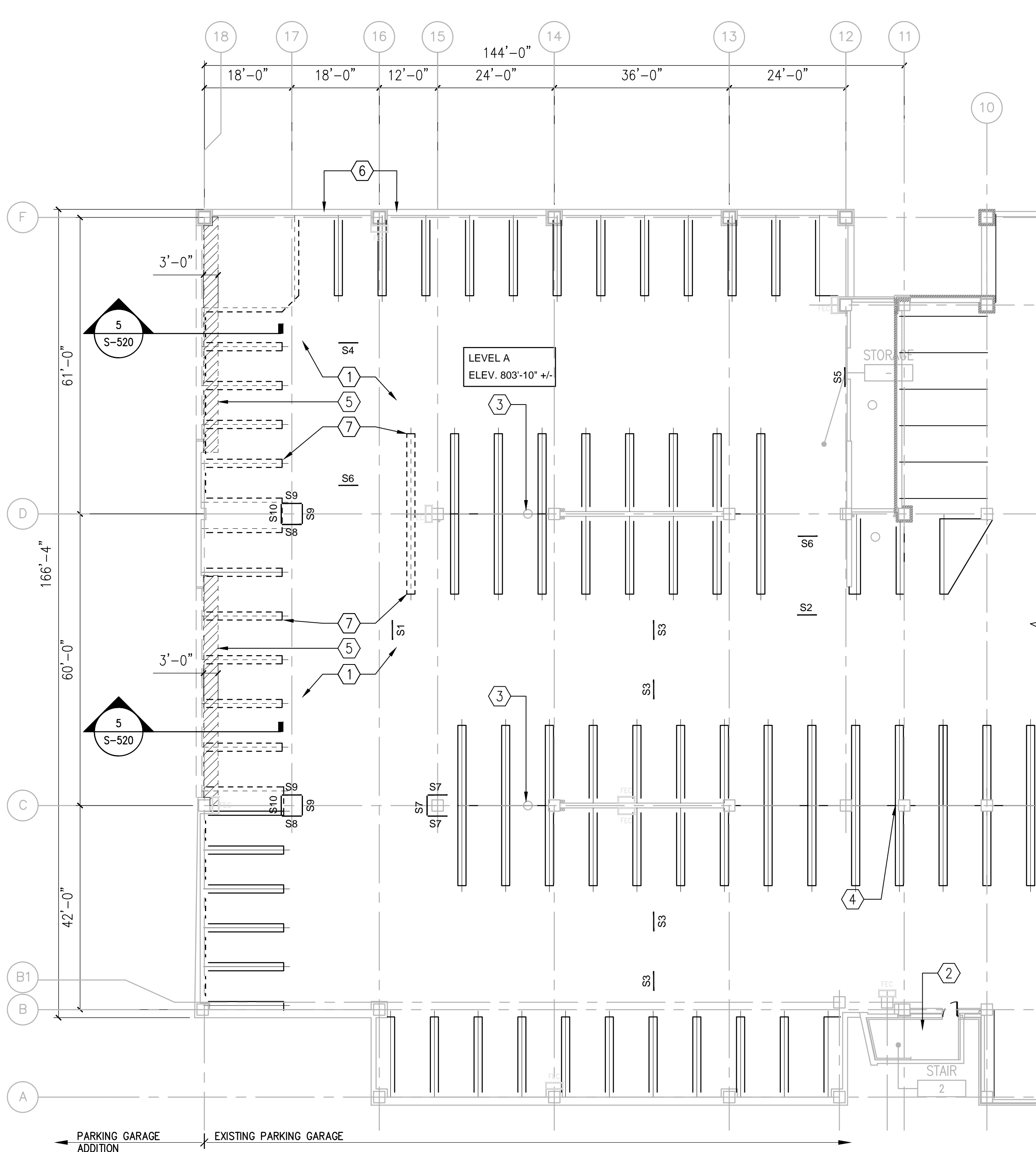
EXISTING BUILDING ISOMETRIC

GENERAL NOTES

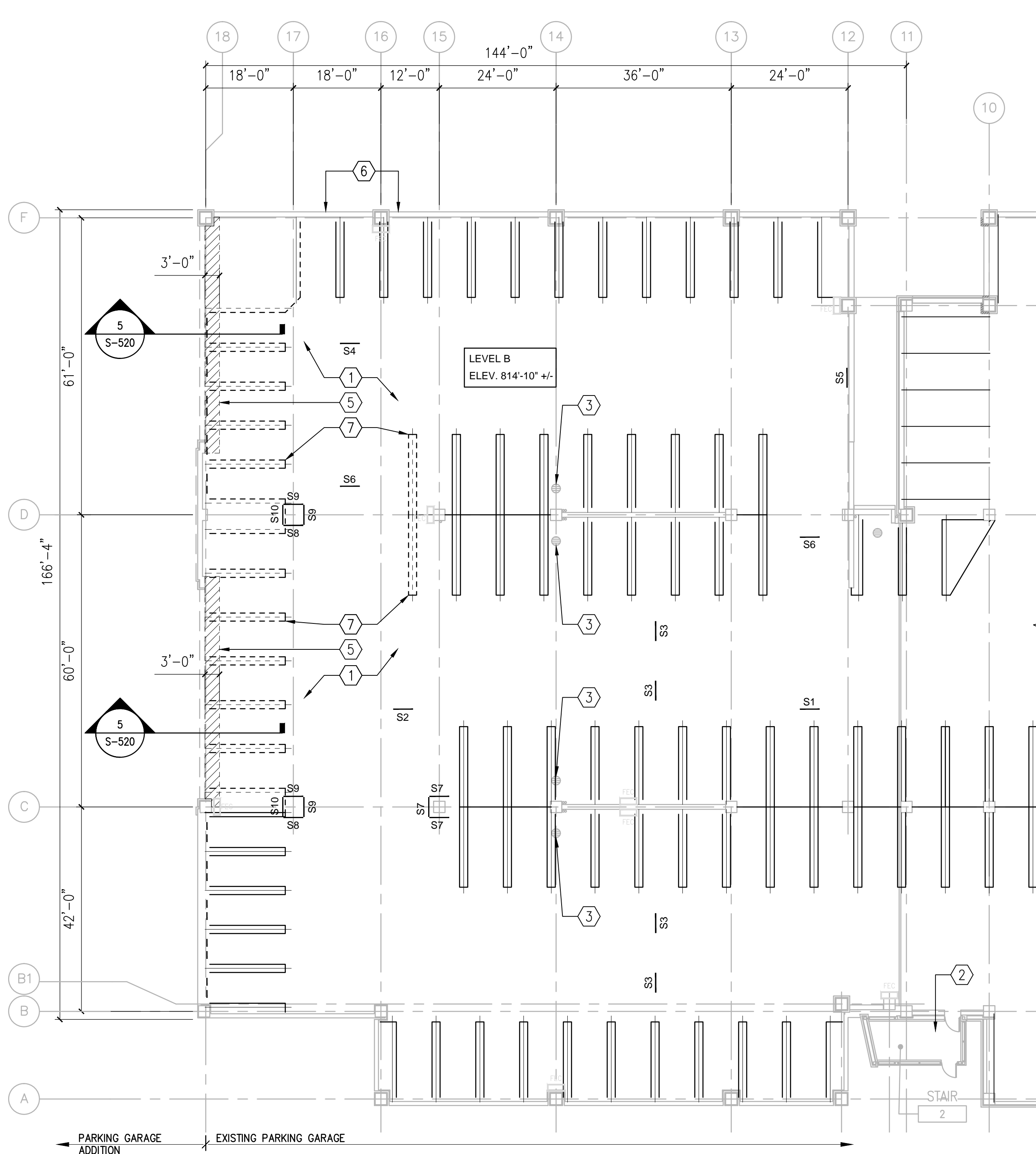
1. REFER TO SPECIFICATIONS DIVISION 01 GENERAL REQUIREMENTS.
2. REFER TO DRAWING G-004 FOR PROJECT CONSTRUCTION PHASING NOTES.
3. REFER TO STRUCTURAL DRAWING S-100 FOR FOUNDATION LEVEL PLAN AND RELATED SCOPE OF WORK ITEMS.
4. REFER TO DRAWINGS FP-1-1 THROUGH FP-105 FOR FIRE PROTECTION SYSTEMS AND RELATED SCOPE OF WORK ITEMS.
5. REFER TO DRAWINGS P-101 THROUGH P-105 FOR PLUMBING SYSTEMS AND RELATED SCOPE OF WORK ITEMS.
6. REFER TO ELECTRICAL DRAWINGS E-101 THROUGH E-105 AND EC-101 THROUGH EC-105 FOR ELECTRICAL SYSTEMS AND RELATED SCOPE OF WORK ITEMS.
7. REFER TO AD-103 FOR TEMPORARY CONSTRUCTION BARRIERS.

DEMOLITION PLAN NOTES


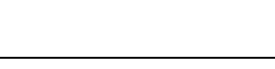

1. PROVIDE TEMPORARY DUST PROOF BARRIERS PRIOR TO OBLITERATION OF SPECIFIED EXISTING PAVEMENT MARKINGS.
2. EXISTING STAIR UNIT WILL REMAIN ACTIVE AT ALL TIMES.
3. EXISTING FLOOR DRAINS TO REMAIN. PROTECT DURING CONSTRUCTION ACTIVITIES. DO NOT UTILIZE FLOOR DRAINS FOR WASHDOWN ACTIVITIES.
4. EXISTING WATER PIPING AND FROST PROOF HOSE BIBBS TO REMAIN.
5. REFER TO DRAWING AD-101 AND S-520 FOR AREAS AND LOCATION OF EXISTING CONCRETE DECK AND CONCRETE WASH/TOPPING THAT IS SCHEDULED TO BE REMOVED.
6. PROTECT EXISTING ALUMINUM RAILING SYSTEM AT EXTERIOR WALL LINE DURING OBLITERATION ACTIVITIES. CONTRACTOR SHALL CLEAN EXISTING ALUMINUM RAILING SYSTEM AT PROJECT COMPLETION PHASE.
7. CONTRACTOR WILL REMOVE EXISTING PAVEMENT MARKINGS AND TRAFFIC STRIPES/MARKINGS INDICATED ON FLOOR PLANS. REMOVE PAINTED MARKINGS BY HYDROBLASTING, SANDBLASTING OR OTHER METHODS APPROVED BY VA. ANY DAMAGE TO EXISTING CONCRETE DECK SURFACE AS A RESULT OF THE CONTRACTOR OPERATIONS WILL BE REPAIRED BY THE CONTRACTOR.
8. REFER TO DRAWING A-101 THROUGH A-105 FOR PAVEMENT MARKING LAYOUT AND DETAIL DRAWING AP-101.



1 LEVEL A - EXISTING PAVEMENT MARKINGS - DEMOLITION PLAN  
1/16"=1'-0"  
PLAN NORTH



2 LEVEL B - EXISTING PAVEMENT MARKINGS - DEMOLITION PLAN  
1/16"=1'-0"  
PLAN NORTH

		CONSULTANTS:		KEYPLAN		ARCHITECT + ENGINEERS:		Drawing Title		Project Number		Project Title		Project Number		Office of Construction and Facilities Management	
		 WALKER PARKING CONSULTANTS 225 Andy Drive, Suite 1 Ann Arbor, MI 48108		 M I D W E S T E R N C O N S U L T I N G 3815 Plaza Drive Ann Arbor, Michigan 48108 (734) 995-0200 • www.midwesternconsulting.com Land Development • Land Survey • Institutional • Municipal Wireless Communications • Transportation • Landfill Services		 BANCROFT ARCHITECTS + ENGINEERS 700 Nicholas Blvd., Suite 300 Elk Grove Village, IL 60007 Telephone : 847.952.9342 www.bancroft-ae.com Bancroft-AE Project No. 14-121		LEVELS A AND B EXISTING PAVEMENT MARKINGS DEMOLITION PLANS		506-331		CONSTRUCT NORTH PARKING STRUCTURE		506-331			
100% FINAL BID DOCUMENTS 08-18-2017 100% BID DOCUMENTS-NOT FOR CONSTRUCTION 07-24-2017 95% CONSTRUCTION DOCUMENTS SUBMISSION 06-15-2017 65% DESIGN DEVELOPMENT SUBMISSION 04-19-2017 35% SCHEMATIC DESIGN SUBMISSION 03-06-2017 Revisions: Date						Approved Project Director		Location ANN ARBOR, MICHIGAN		Building Number 29		Drawing Number APD-101					
VA FORM 08-6231								Date 08-18-2017		Checked EM		Drawn AG				Department of Veterans Affairs	