

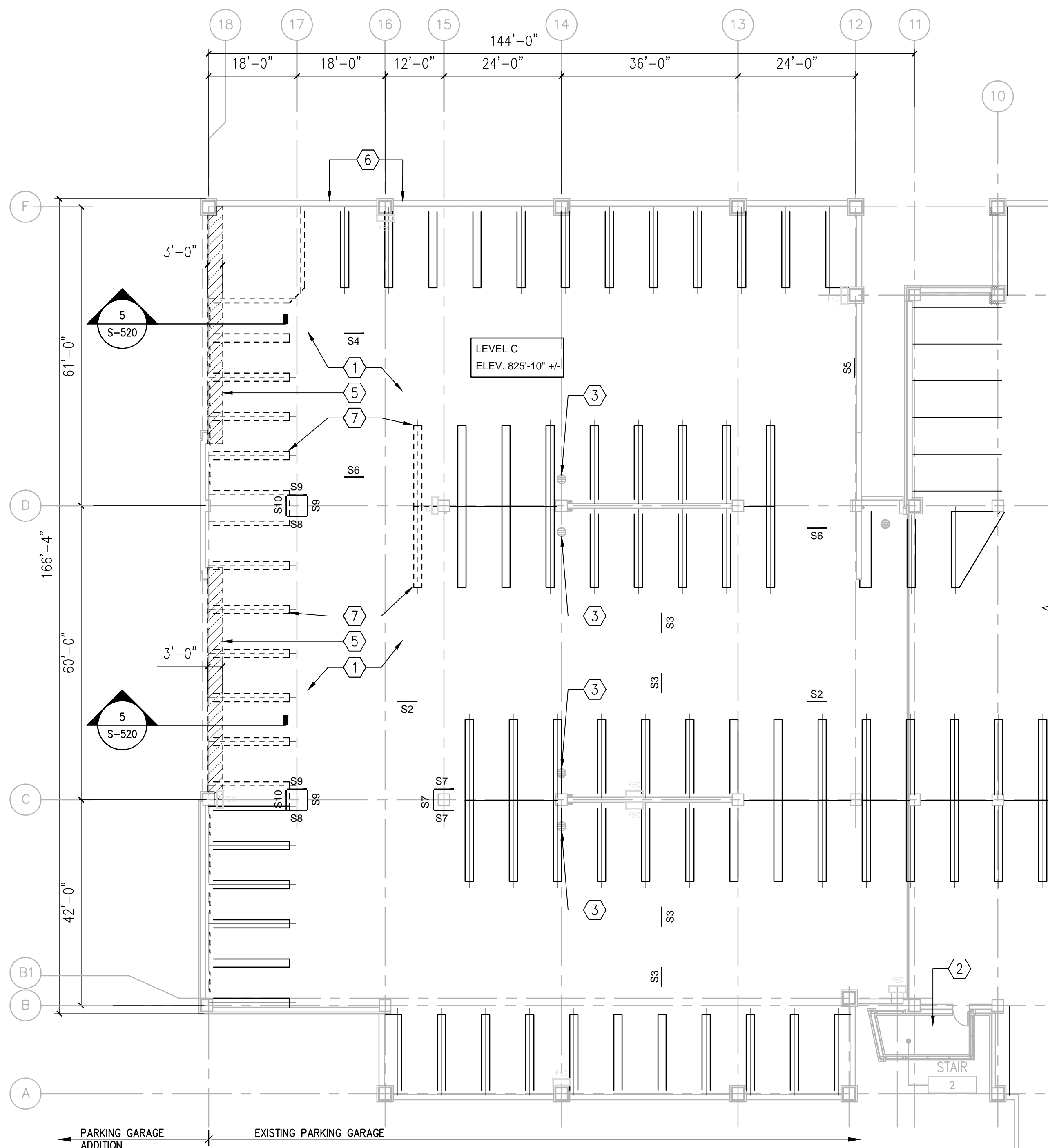
EXISTING BUILDING ISOMETRIC

GENERAL NOTES

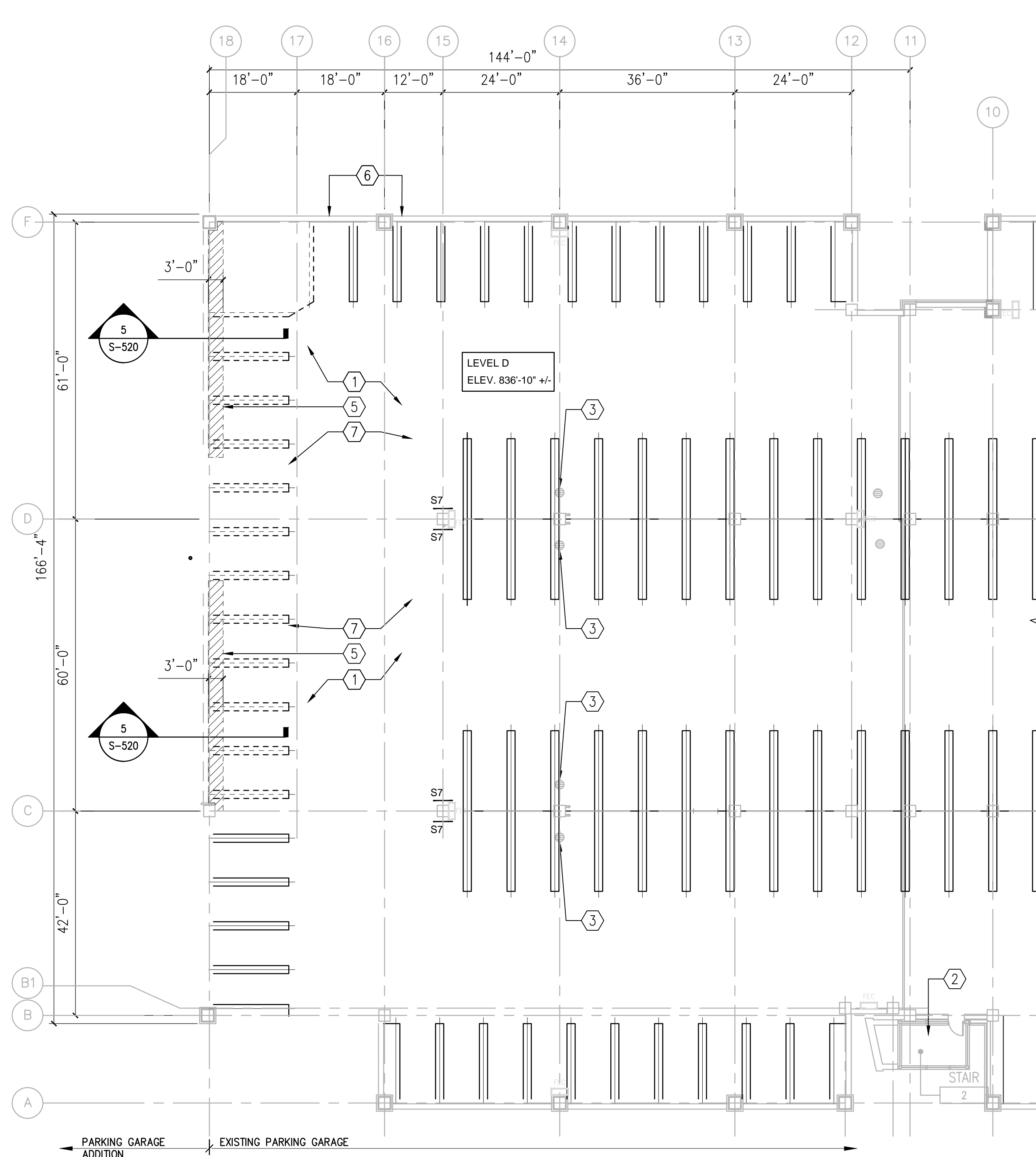
1. REFER TO SPECIFICATIONS DIVISION 01 GENERAL REQUIREMENTS.
2. REFER TO DRAWING G-004 FOR PROJECT CONSTRUCTION PHASING NOTES.
3. REFER TO STRUCTURAL DRAWING S-100 FOR FOUNDATION LEVEL PLAN AND RELATED SCOPE OF WORK ITEMS.
4. REFER TO DRAWINGS FP-1-1 THROUGH FP-105 FOR FIRE PROTECTION SYSTEMS AND RELATED SCOPE OF WORK ITEMS.
5. REFER TO DRAWINGS P-101 THROUGH P-105 FOR PLUMBING SYSTEMS AND RELATED SCOPE OF WORK ITEMS.
6. REFER TO ELECTRICAL DRAWINGS E-101 THROUGH E-105 AND EC-101 THROUGH EC-105 FOR ELECTRICAL SYSTEMS AND RELATED SCOPE OF WORK ITEMS.
7. REFER TO AD-103 FOR TEMPORARY CONSTRUCTION BARRIERS.

DEMOLITION PLAN NOTES

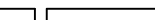




1. PROVIDE TEMPORARY DUST PROOF BARRIERS PRIOR TO OBLITERATION OF SPECIFIED EXISTING PAVEMENT MARKINGS.
2. EXISTING STAIR UNIT WILL REMAIN ACTIVE AT ALL TIMES.
3. EXISTING FLOOR DRAINS TO REMAIN. PROTECT DURING CONSTRUCTION ACTIVITIES. DO NOT UTILIZE FLOOR DRAINS FOR WASHDOWN ACTIVITIES.
4. EXISTING WATER PIPING AND FROST PROOF HOSE BIBBS TO REMAIN.
5. REFER TO DRAWING AD-101 AND S-520 FOR AREAS AND LOCATION OF EXISTING CONCRETE DECK AND CONCRETE WASH/TOPPING THAT IS SCHEDULED TO BE REMOVED.
6. PROTECT EXISTING ALUMINUM RAILING SYSTEM AT EXTERIOR WALL LINE DURING OBLITERATION ACTIVITIES. CONTRACTOR SHALL CLEAN EXISTING ALUMINUM RAILING SYSTEM AT PROJECT COMPLETION PHASE.
7. CONTRACTOR WILL REMOVE EXISTING PAVEMENT MARKINGS AND TRAFFIC STRIPES/MARKINGS INDICATED ON FLOOR PLANS. REMOVE PAINTED MARKINGS BY HYDROBLASTING, SANDBLASTING OR OTHER METHODS APPROVED BY VA. ANY DAMAGE TO EXISTING CONCRETE DECK SURFACE AS A RESULT OF THE CONTRACTOR OPERATIONS WILL BE REPAIRED BY THE CONTRACTOR.
8. REFER TO DRAWING A-101 THROUGH A-105 FOR PAVEMENT MARKING LAYOUT AND DETAIL DRAWING AP-101.



1 LEVEL C - EXISTING PAVEMENT MARKINGS - DEMOLITION PLAN
1/16"=1'-0"



2 LEVEL D - EXISTING PAVEMENT MARKINGS - DEMOLITION PLAN
1/16"=1'-0"

		CONSULTANTS:		KEYPLAN 		ARCHITECT + ENGINEERS:		Drawing Title LEVELS C AND D EXISTING PAVEMENT MARKINGS DEMOLITION PLANS		Project Title CONSTRUCT NORTH PARKING STRUCTURE		Project Number 506-331		<div>Office of Construction and Facilities Management</div> <div> Department of Veterans Affairs</div>
		 								Building Number 29		Drawing Number APD-102		
100% FINAL BID DOCUMENTS		08-18-2017				3815 Plaza Drive Ann Arbor, Michigan 48108 (734) 995-0200 • www.midwesternconsulting.com Land Development • Land Survey • Institutional • Municipal Wireless Communications • Transportation • Landfill Services		700 Nicholas Blvd., Suite 300 Ely Grove Village, IL 60007 Telephone : 847.952.9342 www.bancroft-ae.com Bancroft-AE Project No. 14-121		Location ANN ARBOR, MICHIGAN				
100% BID DOCUMENTS-NOT FOR CONSTRUCTION		07-24-2017								Date 08-18-2017		Checked EM		
95% CONSTRUCTION DOCUMENTS SUBMISSION		06-15-2017										Drawn AG		
65% DESIGN DEVELOPMENT SUBMISSION		04-19-2017												
35% SCHEMATIC DESIGN SUBMISSION		03-06-2017												
Revisions:		Date												