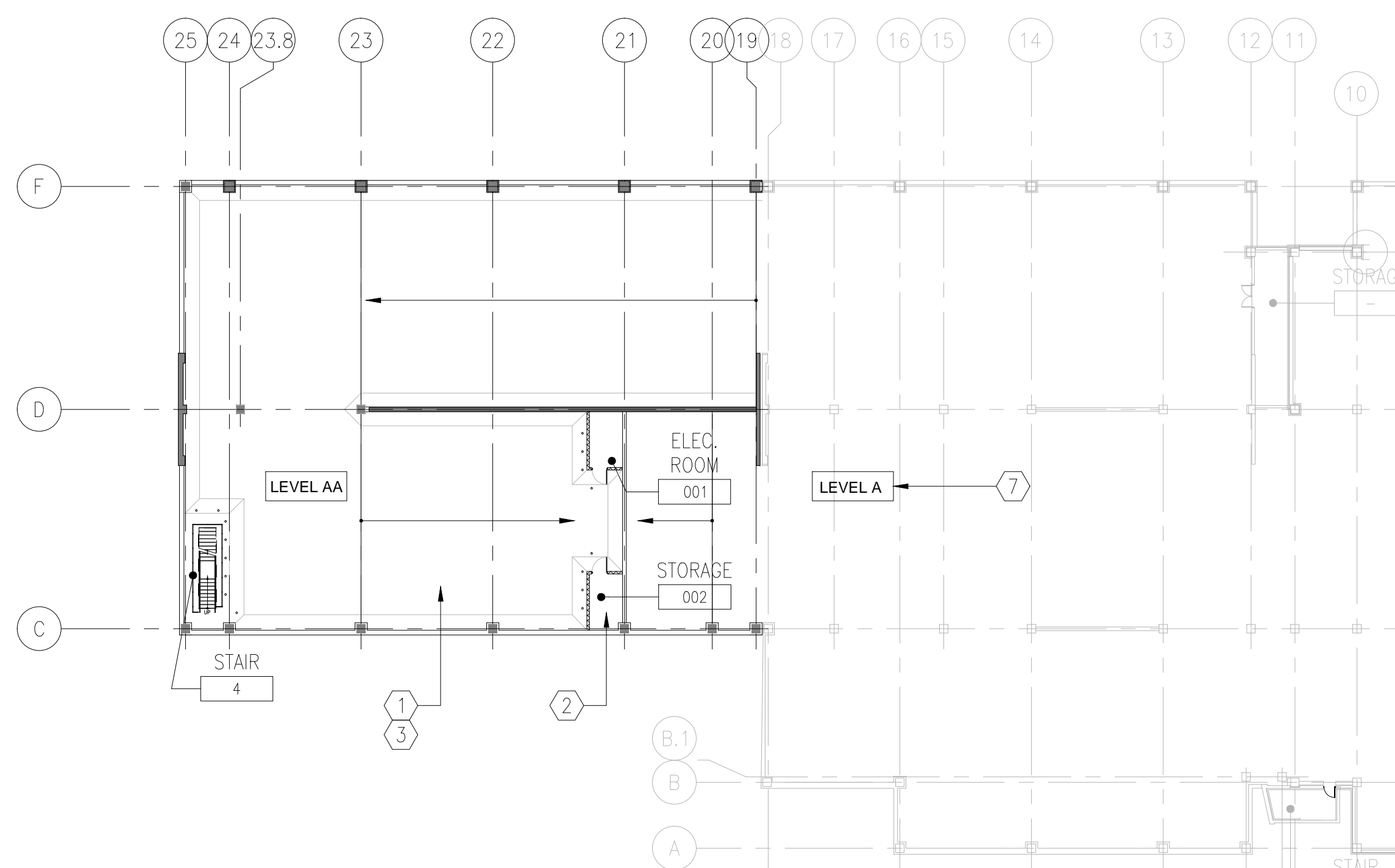
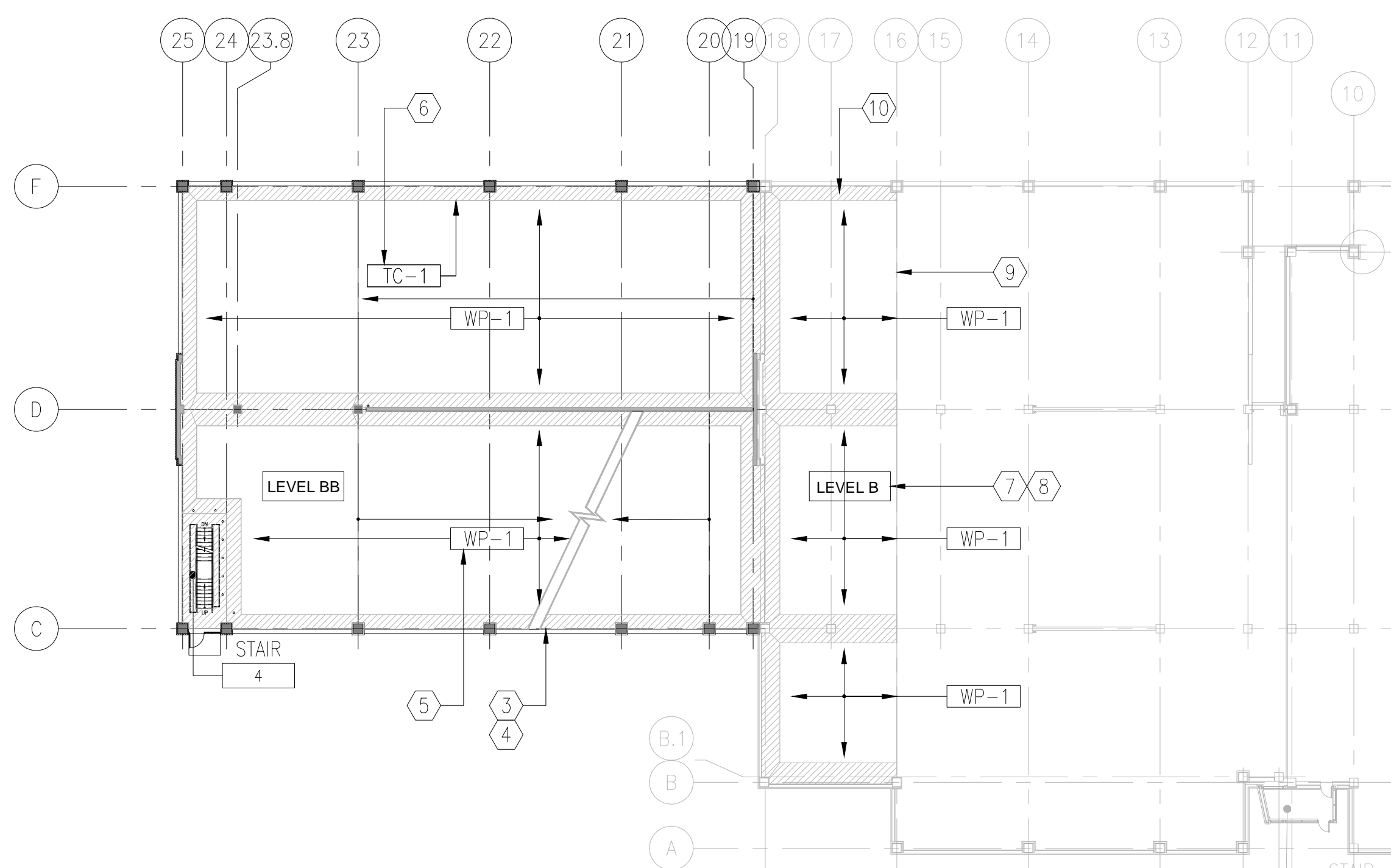


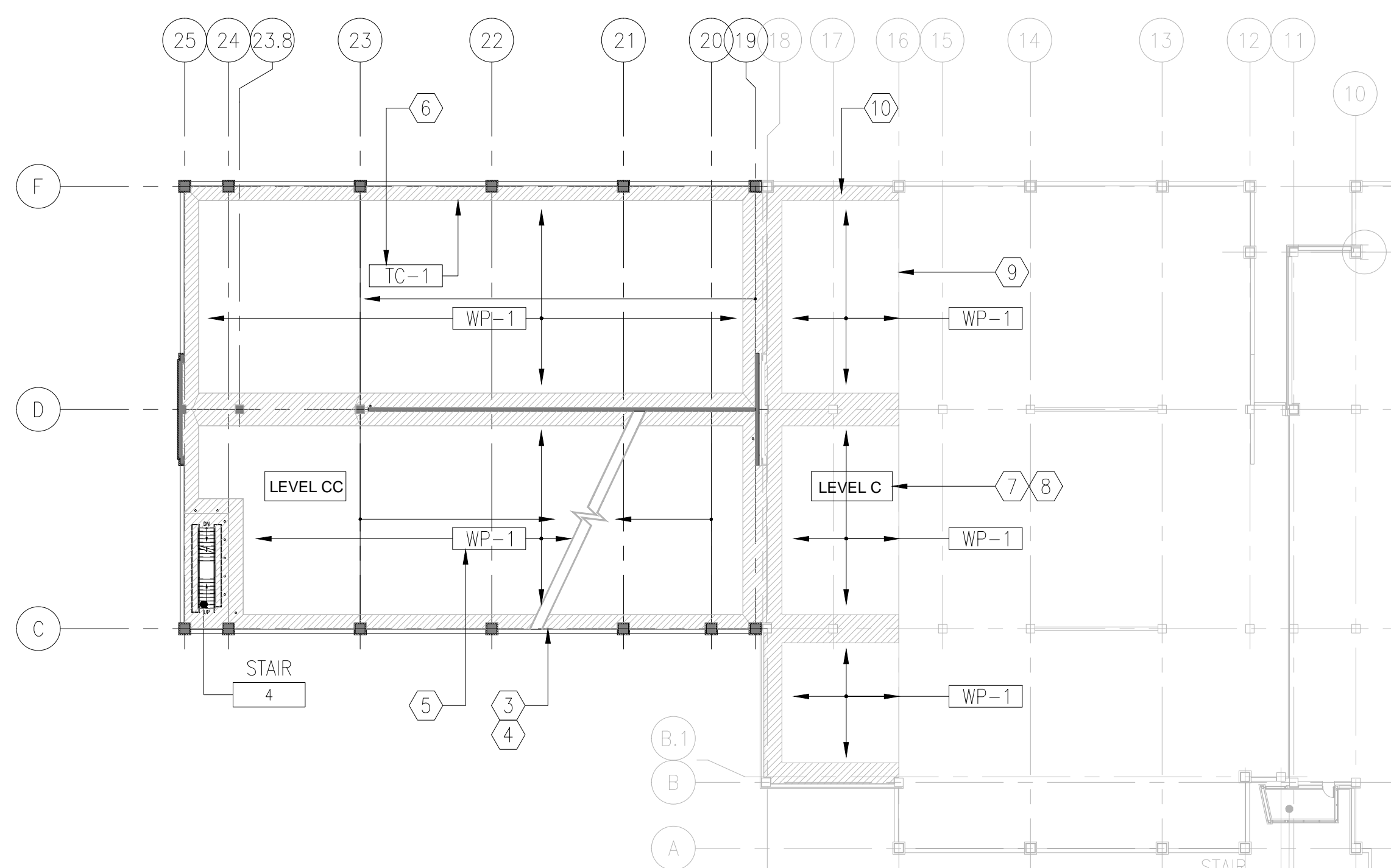
three eighths inch = one foot  
one eighth inch = one foot  
one quarter inch = one foot  
one half inch = one foot  
one inch = one foot  
one and one half inches = one foot  
two inches = one foot  
three inches = one foot



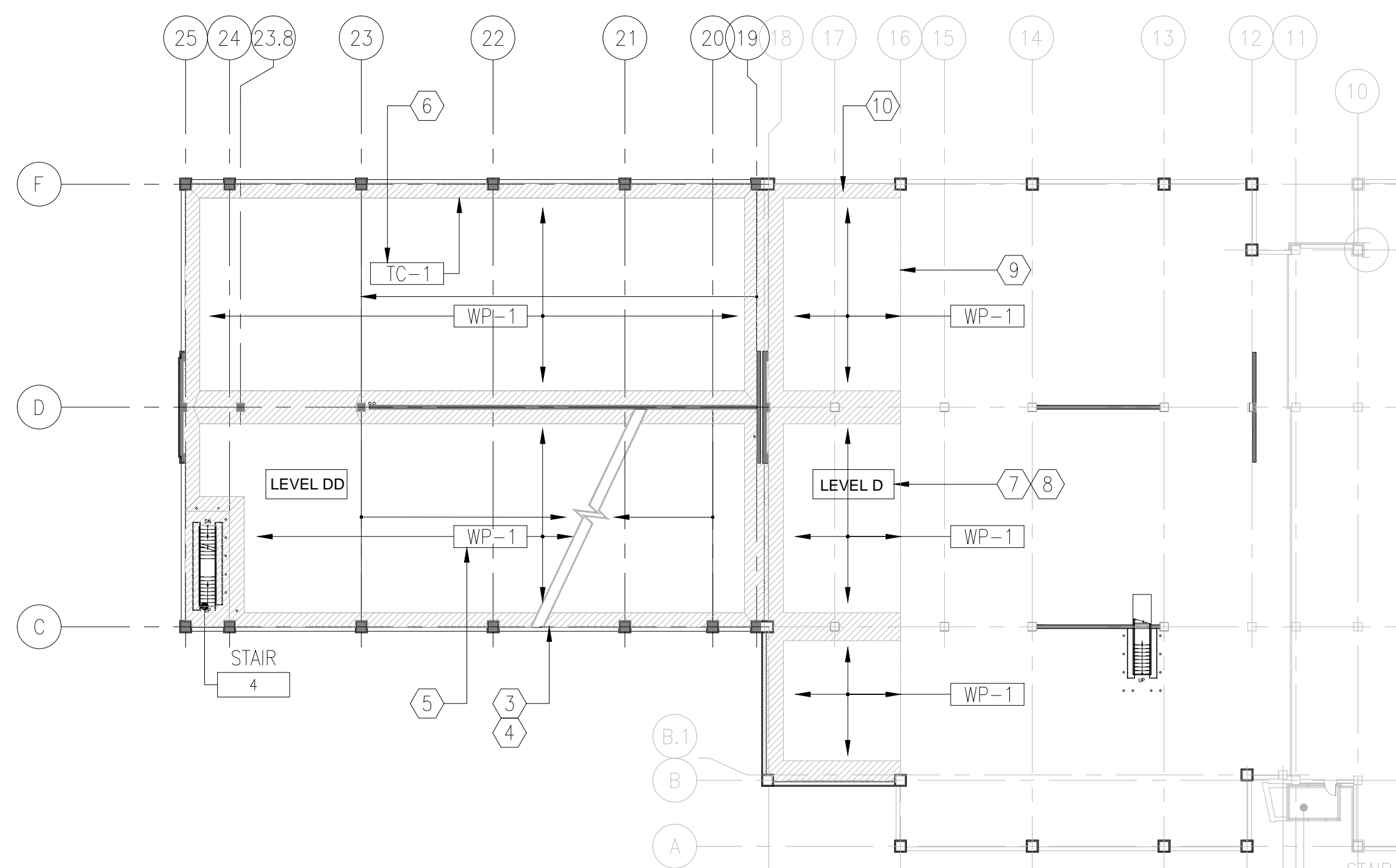
1 LEVEL A - TRAFFIC COATING | WATER REPELLENT SYSTEM PLAN  
1/32"=1'-0"



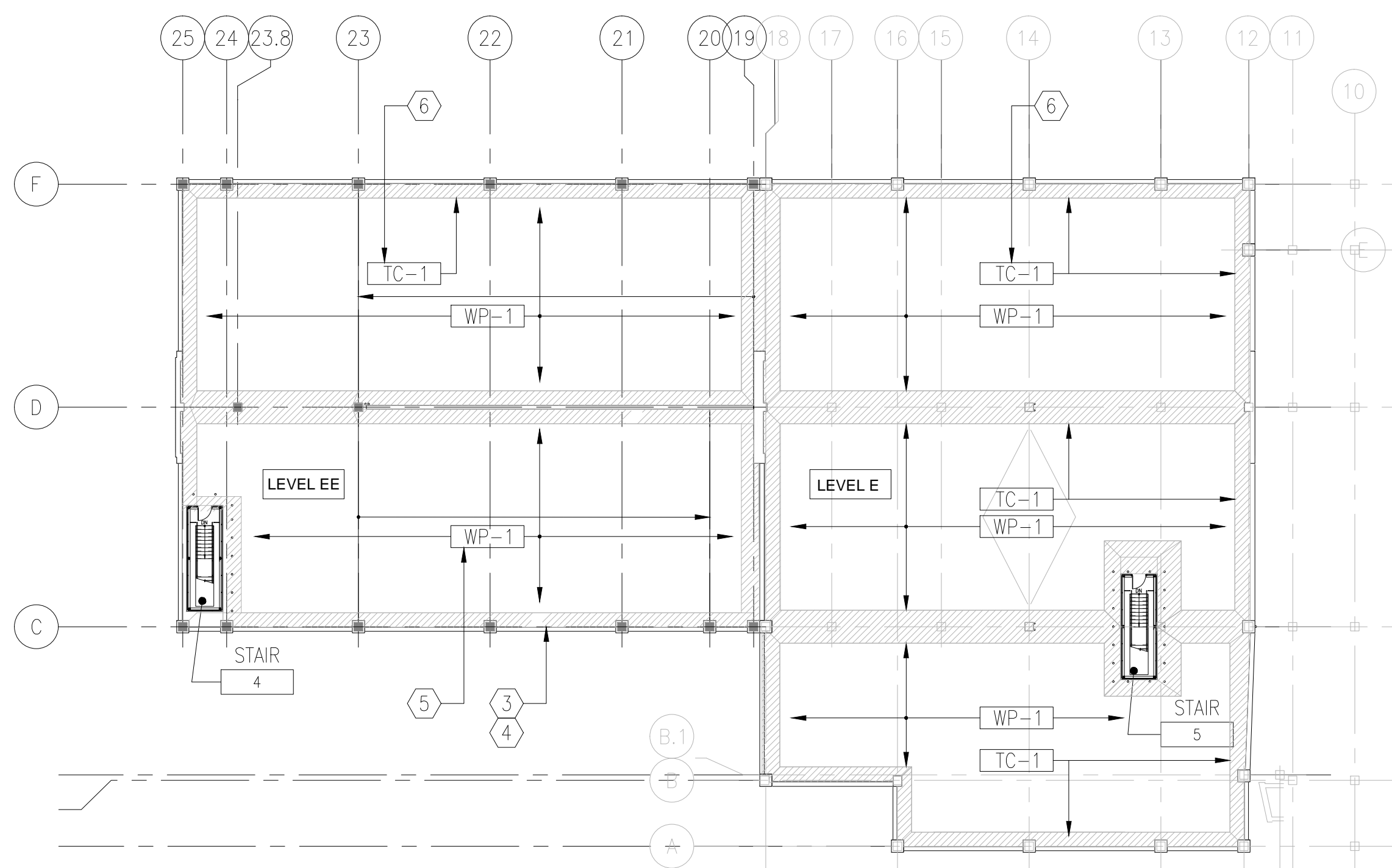
2 LEVEL B - TRAFFIC COATING | WATER REPELLENT SYSTEM PLAN  
1/32"=1'-0"



3 LEVEL C - TRAFFIC COATING | WATER REPELLENT SYSTEM PLAN  
1/32"=1'-0"



4 LEVEL D - TRAFFIC COATING | WATER REPELLENT SYSTEM PLAN  
1/32"=1'-0"




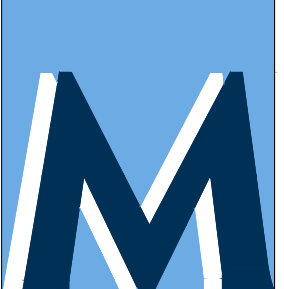

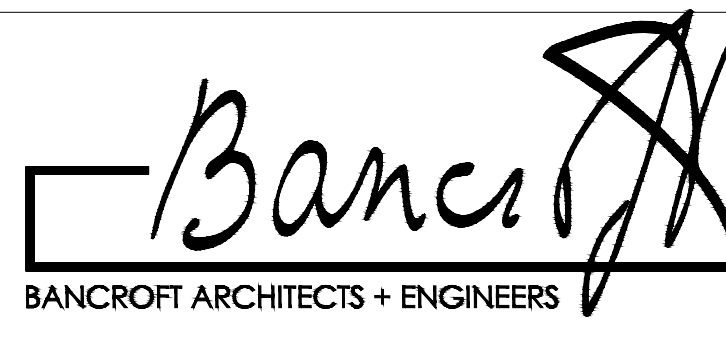

5 LEVEL E - TRAFFIC COATING | WATER REPELLENT SYSTEM PLAN  
1/32"=1'-0"

### GENERAL NOTES

- REFER TO SPECIFICATIONS DIVISION 01 GENERAL REQUIREMENTS.
- REFER TO DRAWING G-004 FOR PROJECT CONSTRUCTION PHASING NOTES.
- REFER TO DRAWING S-100 THROUGH S-105 FOR STRUCTURAL FRAMING PLANS AND RELATED SCOPE OF WORK ITEMS.
- REFER TO DRAWINGS FP-101 THROUGH FP-105 FOR FIRE PROTECTION SYSTEMS AND RELATED SCOPE OF WORK ITEMS.
- REFER TO DRAWINGS P-101 THROUGH P-105 FOR PLUMBING SYSTEMS AND RELATED SCOPE OF WORK ITEMS.
- REFER TO ELECTRICAL DRAWINGS E-101 THROUGH E-105 AND EC-101 THROUGH EC-105 FOR ELECTRICAL SYSTEMS AND RELATED SCOPE OF WORK ITEMS.

### CONSTRUCTION PLAN NOTES

- PARKING LEVEL AA IS A CONCRETE SLAB AT GRADE. THERE IS NO WATER REPELLENT SYSTEM OR TRAFFIC COATING SYSTEM REQUIRED AT THIS SLAB AREA.
- REFER TO DRAWING S-102 FOR TRAFFIC COATING SYSTEM OF PARKING DECK SLAB OVER ELECTRIC AND STORAGE ROOM AREAS.
- REFER TO DRAWING A-102, A-103, A-104 AND A-105 FOR PAVEMENT MARKING PLANS.
- SEQUENCE FOR INSTALLATION OF TRAFFIC COATING, WATER REPELLENT SYSTEMS AND PAVEMENT MARKINGS WILL BE AS FOLLOWS:
  - PREPARE ALL CONCRETE SURFACES PRIOR TO SYSTEM APPLICATION. REFER TO SPECIFICATIONS OF EACH PRODUCT LISTED HEREIN FOR SPECIFIC REQUIREMENTS.
  - FIRST PHASE OF WORK WILL BE INSTALLATION OF TRAFFIC COATING SYSTEM.
  - SECOND PHASE OF WORK WILL BE INSTALLATION OF WATER REPELLENT SYSTEM. DO NOT APPLY WATER REPELLENT SYSTEM OVER THE TRAFFIC COATING SYSTEM.
  - THIRD PHASE OF WORK WILL BE INSTALLATION OF PAVEMENT MARKINGS.
- PROVIDE WATER REPELLENT SYSTEM AT PARKING DECK LEVELS B, C, D AND E. DO NOT INSTALL WATER REPELLENT SYSTEM OVER THE TRAFFIC COATING SYSTEM.
- PROVIDE TRAFFIC COATING SYSTEM AT HATCHED AREAS AT PARKING DECK LEVELS B, C, D AND E.
- REFER TO DRAWING APD-101 AND APD-102 FOR DEMOLITION ACTIVITIES SCHEDULED FOR EXISTING PAVEMENT MARKINGS.
- CONTRACTOR WILL PREPARE EXISTING CONCRETE DECKS AT EXISTING PARKING DECK LEVELS B, C, AND D TO RECEIVE TRAFFIC COATING AND WATER REPELLENT SYSTEMS WITHIN AREAS DENOTED. REFER TO DETAILS 5/S-520 FOR NEW CONCRETE DECK BETWEEN COLUMN LINES C TO F AT COLUMN LINE 18.
- PROVIDE WATER REPELLENT SYSTEM AT DECK AREA DENOTED.
- PROVIDE TRAFFIC COATING SYSTEM AT DECK AREAS HATCHED.

<b>100% FINAL BID DOCUMENTS</b> 100% BID DOCUMENTS-NOT FOR CONSTRUCTION 95% CONSTRUCTION DOCUMENTS SUBMISSION 65% DESIGN DEVELOPMENT SUBMISSION 35% SCHEMATIC DESIGN SUBMISSION Revisions: 08-18-2017 07-24-2017 06-15-2017 04-19-2017 03-06-2017 Date		<b>CONSULTANTS:</b>  <b>WALKER</b> PARKING CONSULTANTS 225 Auto Drive, Suite 1 Ann Arbor, MI 48106		 <b>MIDWESTERN</b> CONSULTING 3815 Plaza Drive Ann Arbor, Michigan 48108 (734) 995-0200 • www.midwesternconsulting.com Land Development • Land Survey • Institutional • Municipal Wireless Communications • Transportation • Landfill Services		<b>KEYPLAN</b> 	<b>ARCHITECT + ENGINEERS:</b>  <b>BANCROFT ARCHITECTS + ENGINEERS</b> 700 Nicholas Blvd., Suite 300 Bk Grove Village, IL 60007 Telephone : 847.952.9362 www.bancroft-ae.com Bancroft-AE Project No. 16-121 VA CONTRACT NO. VA250-17-C-0008		<b>Drawing Title</b> TRAFFIC COATING SYSTEM   WATER REPELLENT SYSTEM PLANS  <b>Approved Project Director</b>	<b>Project Title</b> CONSTRUCT NORTH PARKING STRUCTURE  <b>Location</b> ANN ARBOR, MICHIGAN  <b>Date</b> 08-18-2017  <b>Checked</b> EM  <b>Drawn</b> AG	<b>Project Number</b> 506-331  <b>Building Number</b> 29  <b>Drawing Number</b> AP-103	<b>Office of</b> Construction and Facilities Management   <b>Department of</b> Veterans Affairs
---	--	--	--	---	--	--	---	--	--	---	---	--