

ABBREVIATIONS:

AFF	ABOVE FINISHED FLOOR
COR	CONTRACTING OFFICER'S REPRESENTATIVE
DEG	DEGREE
DT	DRAIN TILE
EX	EXISTING
FP	FIRE PROTECTION

FIRE PROTECTION EQUIPMENT NOTES:

- EQUIPMENT SHALL BE MANUFACTURER SPECIFIED.
- ALL EQUIPMENT/DEVICES SHALL BE NEW (UNLESS OTHERWISE SPECIFIED) AND IS TO BEAR THE APPROPRIATE AGA, CSA OR UL APPROVED LABELS, LISTINGS, AND CERTIFICATIONS FOR THE SPECIFIC DESIGN PURPOSE.

PIPING SYMBOLS:

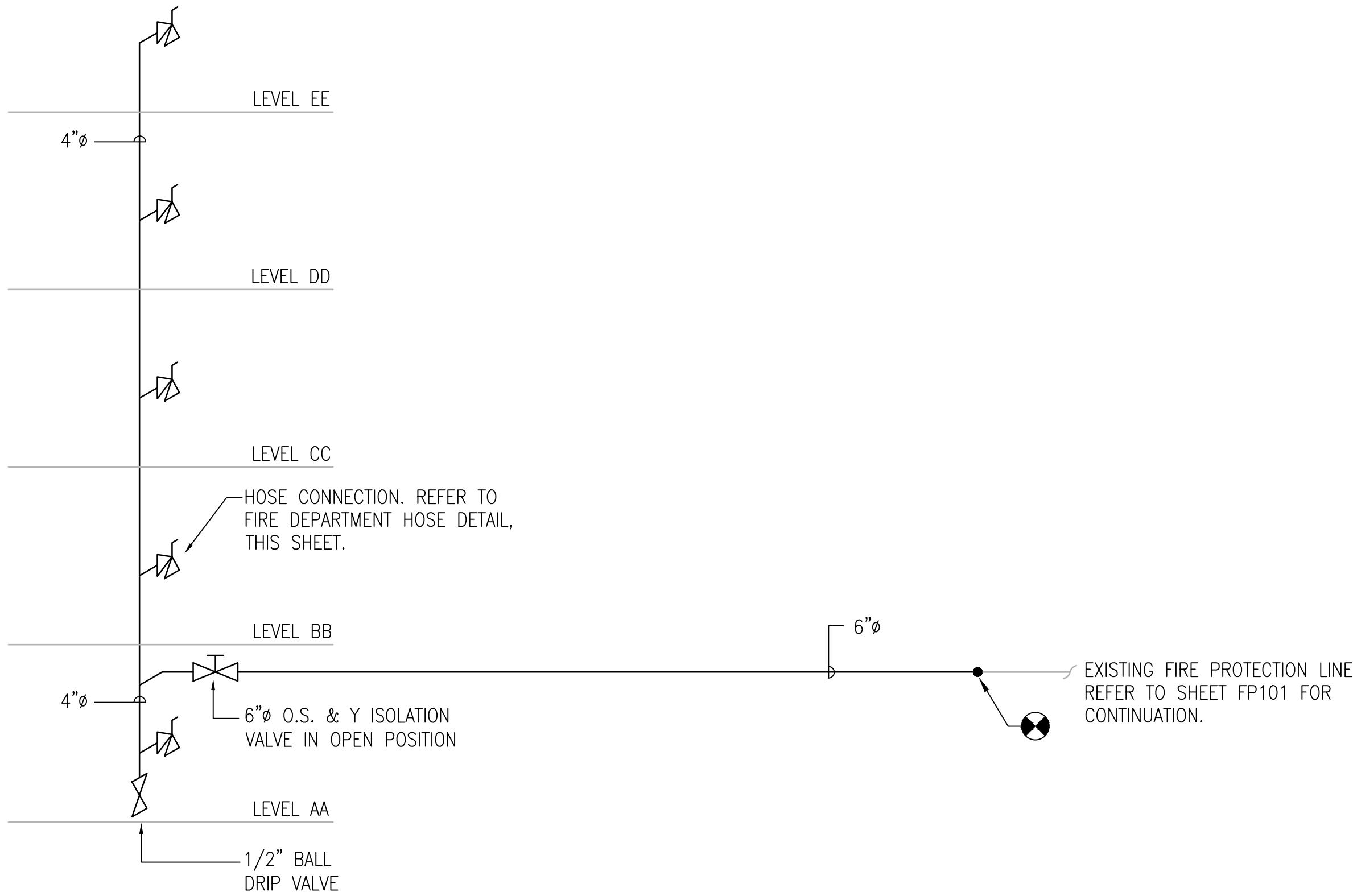
X" FP	PIPE DESIGNATION X = PIPE SIZE FP = FIRE PROTECTION
— ]	PIPE CAP
— )	PIPE DOWN
— (	PIPE UP
— >	PIPE CONTINUATION
⊗	NEW CONNECTION POINT

PIPING DESIGNATIONS:

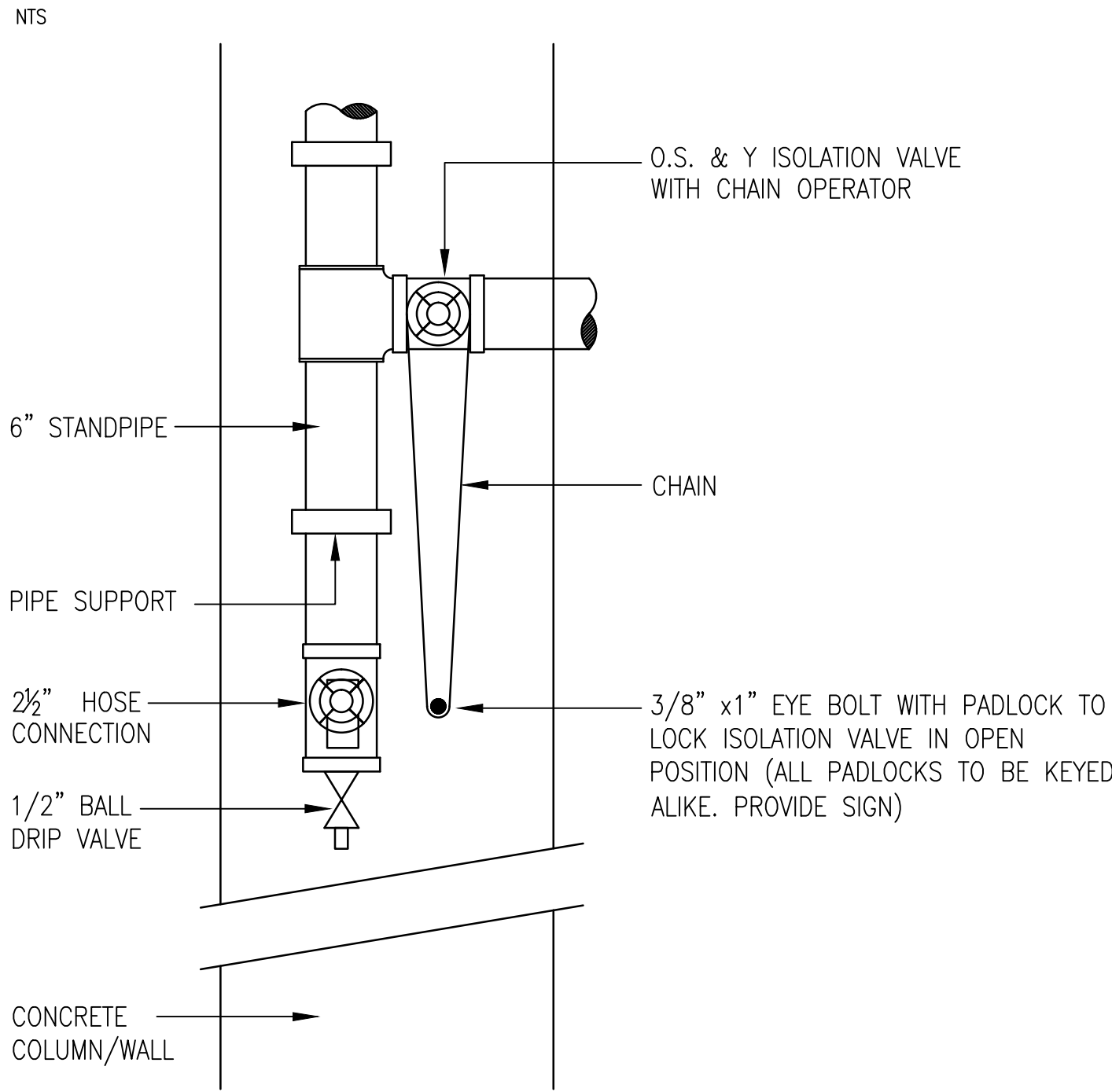
— FP —	FIRE PROTECTION
--------	-----------------

GENERAL NOTES:

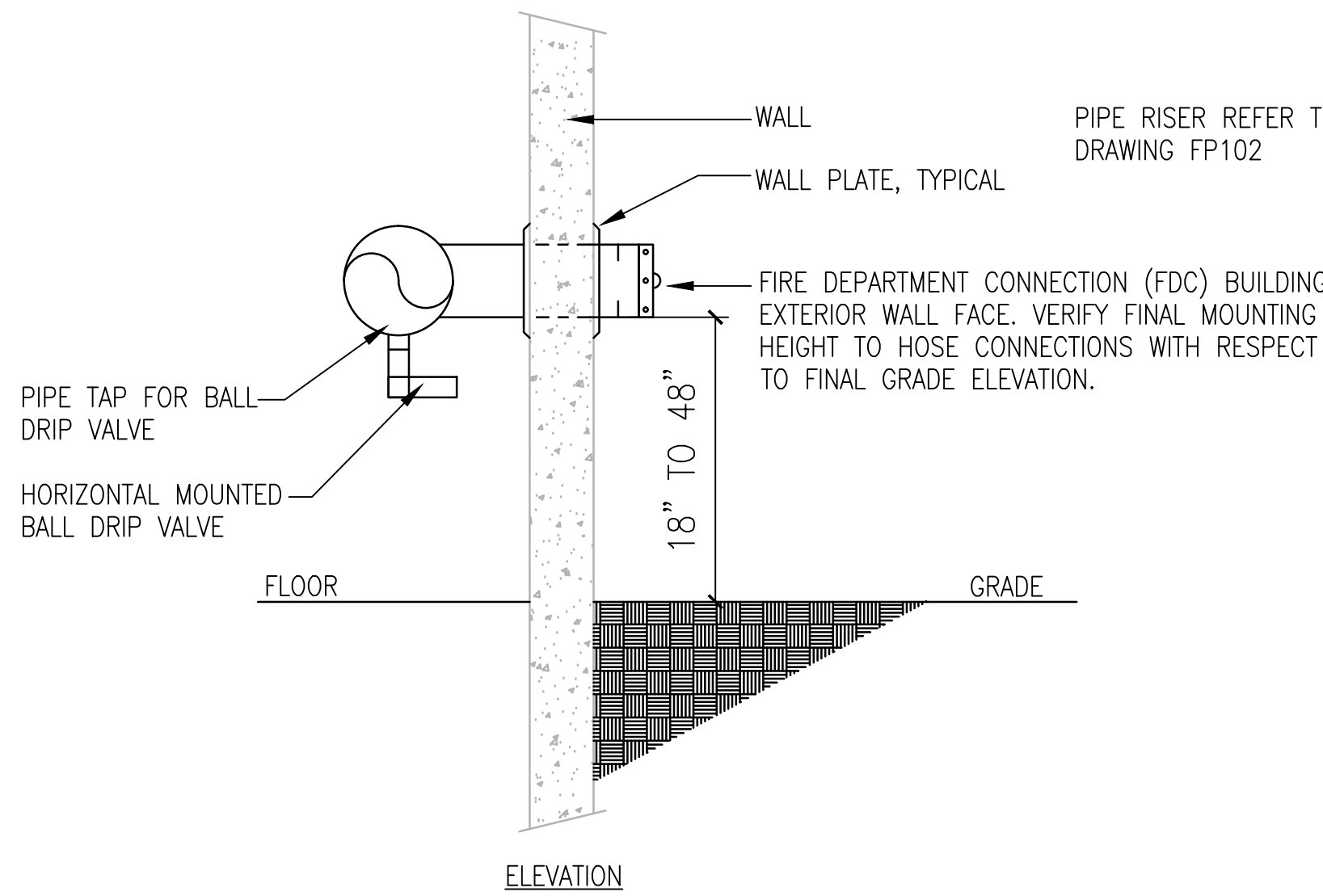
- FIRE DEPARTMENT CONNECTION, FDC, SHALL BE WALL MOUNT TYPE, 2-1/2 X 2-1/2 X 2-1/2" X 6" ELKHART NO. 18 3-WAY OR VA APPROVED EQUIVALENT WITH INDEPENDENT DROP CLAPPERS. FDC SHALL BE COMPLETE WITH PLUGS AND CHAINS. ESCUTCHEON LETTERED "STANDPIPE". THREADS PER FIRE DEPARTMENT STANDARDS. VERIFY SIZE AND LOCATION WITH LOCAL FIRE OFFICIAL PRIOR TO INSTALLATION.
- HOSE CONNECTIONS SHALL BE 2-1/2" ANGLE HOSE VALVE, ELKHART NO. U-25 - 2.5 OR VA APPROVED EQUIVALENT. THREADS TO BE FIRE DEPARTMENT STANDARD. PROVIDE 2-1/2" TO 1-1/2" ADAPTOR, CAP AND CHAIN WITH ROUGH BRASS FINISH. PROVIDE SIGN AT EACH HOSE CONNECTION "MANUAL STANDPIPE FOR FIRE DEPARTMENT USE ONLY".
- ALL MATERIALS SHALL BE INSTALLED PER NFPA 14, LOCAL FIRE CODES AND FACTORY REQUIREMENTS. ALL MATERIALS SHALL BE LISTED AND APPROVED BY RECOGNIZED TESTING AGENCY.
- ALL FIRE PROTECTION VALVES REQUIRED TO BE LOCKED OR MONITORED BY THE NFPA.
- CONTRACTOR SHALL PROVIDE ALL TESTS AND INSPECTIONS PER NFPA 14, ALL REQUIRED PERMITS, APPROVALS AND INSPECTION CERTIFICATES.
- FOR PIPES CROSSING EXPANSION JOINTS, PROVIDE EXPANSION LOOPS AT ALL LOCATIONS.
- ALL PIPING SHALL BE CLEANED AND PAINTED RED. REFER TO SPECIFICATIONS FOR REQUIREMENTS.
- ALL PIPING SHALL BE STANDARD STEEL PIPE ASTM A53 SCHEDULE 40.
- PIPING FOR STANDPIPE SYSTEM SHALL BE SCHEDULE 40 GALVANIZED STEEL ABOVE GRADE. ROUTE PIPING AS HIGH AS POSSIBLE WHILE MAINTAINING 1/4" SLOPE PER 10'-0" MINIMUM TO DRAIN POINTS (STANDPIPE AND SIAMESE CONNECTIONS). DO NOT INSTALL ADDITIONAL AUXILIARY DRAIN VALVES WITHOUT WRITTEN APPROVAL OF COR. MAINTAIN A MINIMUM HEADROOM CLEARANCE OF 8'-2". COORDINATE ANY REQUIRED BLOCKOUTS/SLEEVES/DAPS IN TEE STEMS AND BEAMS WITH GENERAL AND PRECAST CONTRACTORS. PROVIDE EARTHQUAKE BRACING AND SUPPORTS AS REQUIRED BY NFPA. DO NOT INSTALL PIPING CLOSER THAN 3'-0" HORIZONTALLY TO LIGHT FIXTURES.
- FIRE EXTINGUISHER CABINETS WILL BE AS MANUFACTURED BY ACTIVAR, INC. CONSTRUCTION PRODUCTS GROUP, MODEL #1013F10, AMBASSADOR STEEL FIRE EXTINGUISHER CABINETS. ALL CABINETS WILL BE SURFACE MOUNTED. DOOR AND TRIM CONSTRUCTION COLD ROLLED STEEL WITH WHITE POWDER-COAT FINISH. TUB CONSTRUCTED OF COLD ROLLED STEEL WITH WHITE POWDER-COAT FINISH FULL GLAZING WITH SAF-T-LOK IN 1-1/4" FRAME. DOOR GLAZING WILL BE BRONZE ACRYLIC.



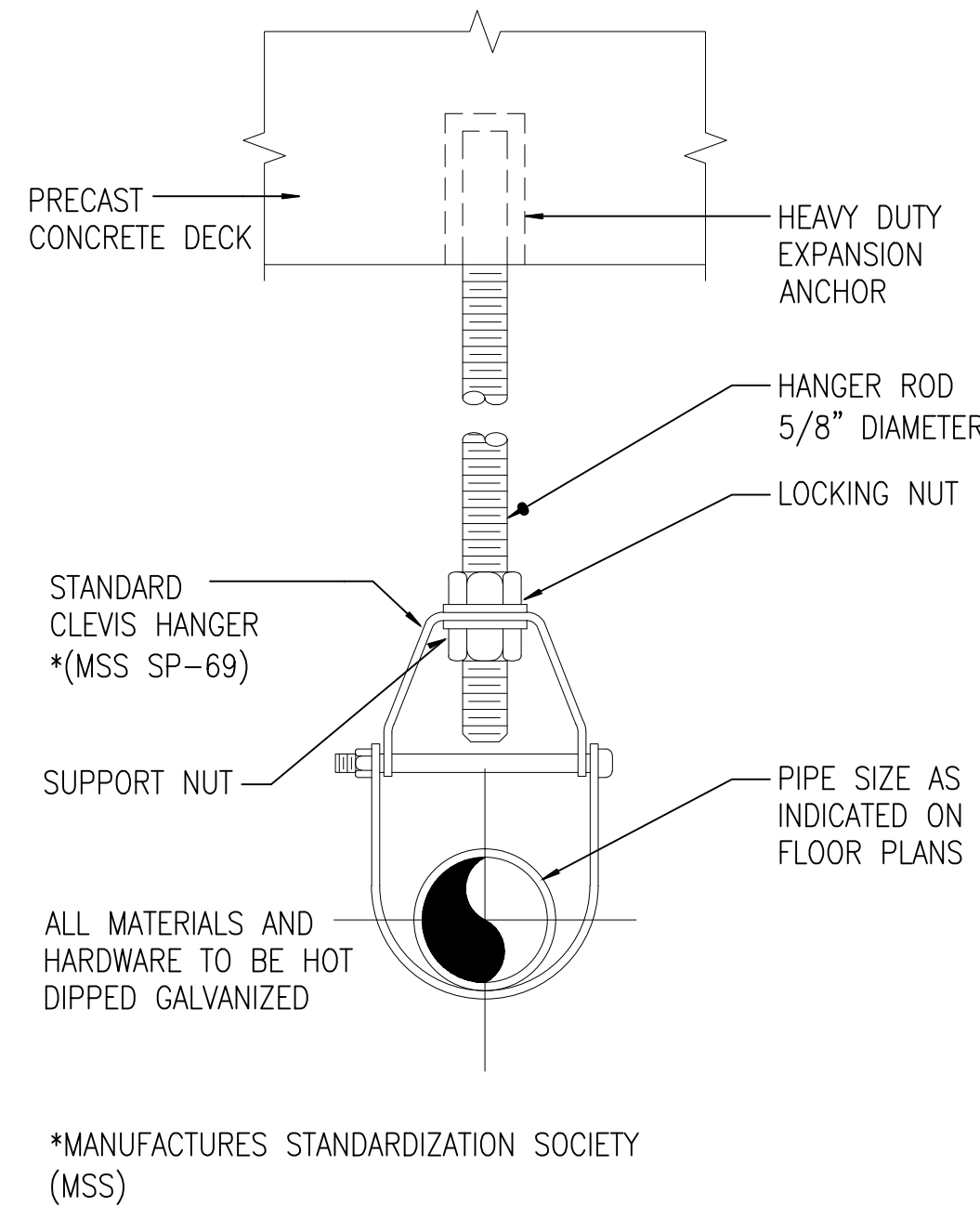
1 FIRE PROTECTION ISOMETRIC



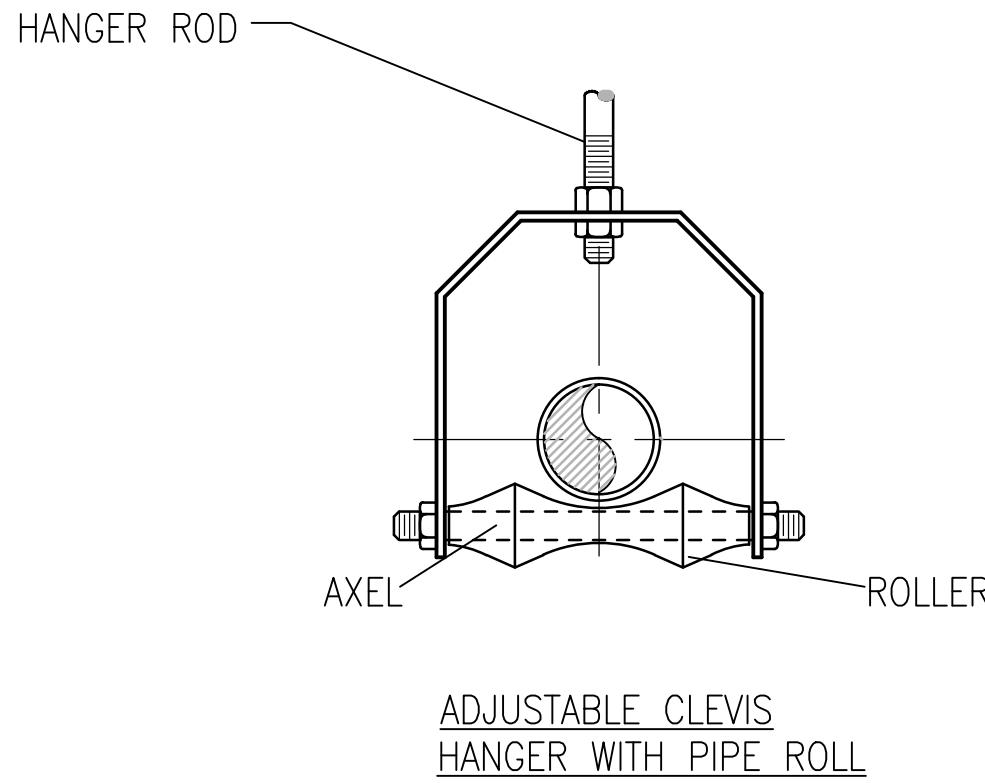
4 CHAIN OPERATED ISOLATION VALVE AT LEVEL BB



7 FIRE DEPARTMENT CONNECTION



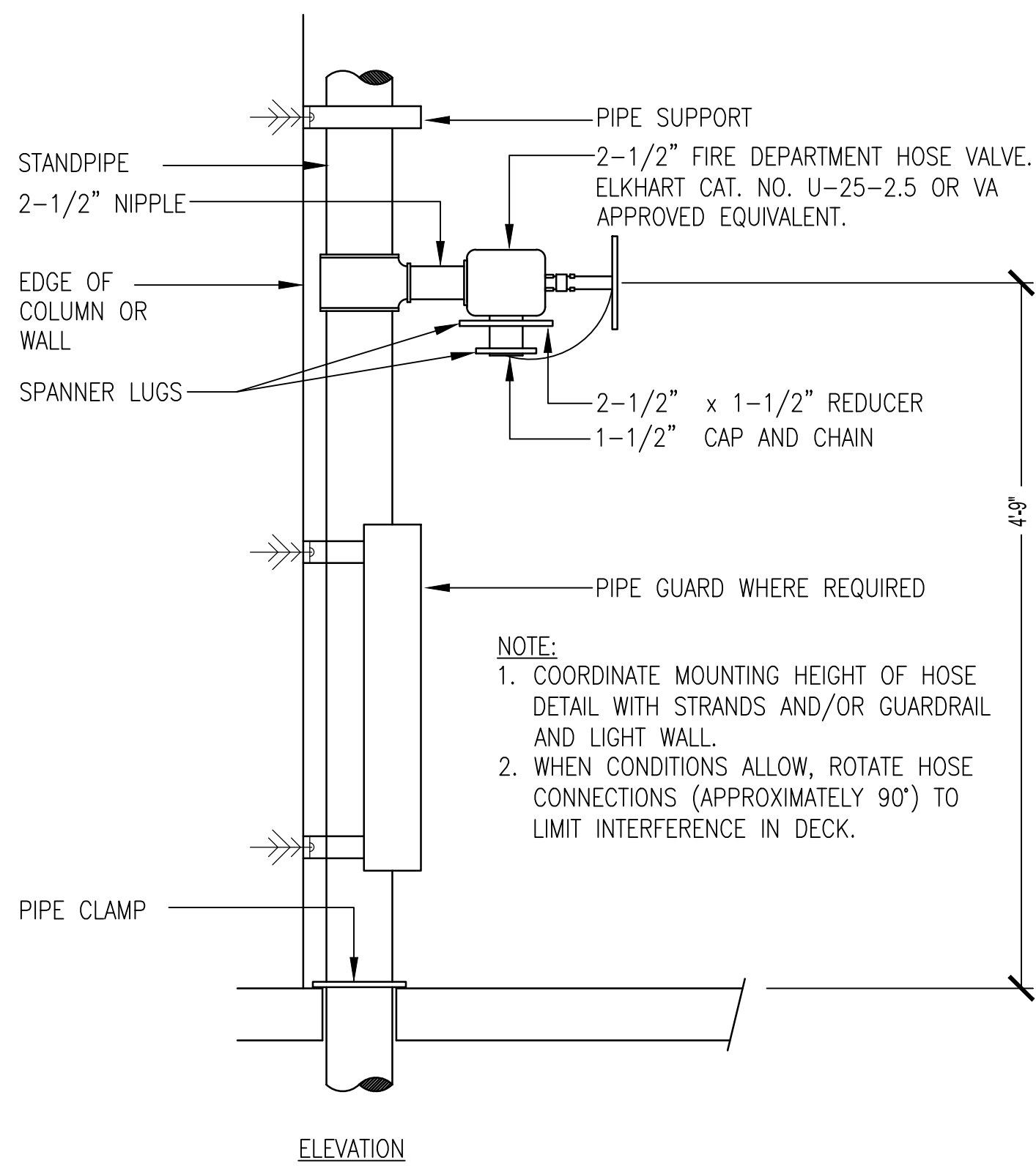
2 PIPE HANGER DETAIL



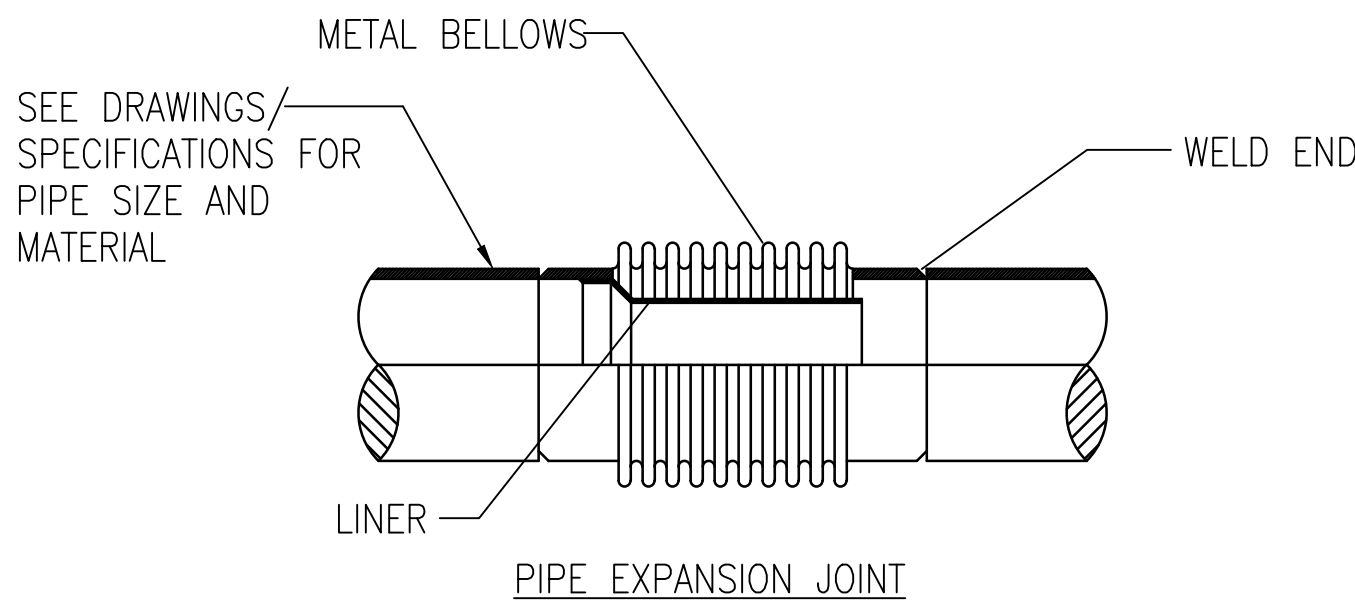
NOTES:

- SEE SPECIFIER FOR DETAILED HANGER REQUIREMENTS
- WHEN PIPE LINE IS INSULATED, TOTAL OUTSIDE DIAMETER OF PIPE AND COVERING SHOULD BE USED TO DETERMINE SIZE OF HANGER. WHEN PIPE LINE IS BARE, NOMINAL PIPE SIZE SHOULD BE USED.

5 PIPE ROLLER HANGER FOR EXPANSION JOINT



3 TYPICAL FIRE DEPARTMENT HOSE CONNECTION DETAIL



NOTES:

- PIPING MUST BE SUPPORTED WITH PROPER PIPE SUPPORTS SO EXPANSION JOINTS DO NOT CARRY ANY PIPE LOADS. GUIDES ARE REQUIRED WITHIN FOUR PIPE DIAMETERS OF THE JOINT, AND THEN AGAIN AFTER FOURTEEN PIPE DIAMETERS .
- LINERS ARE TO BE INSTALLED IN THE PROPER ORIENTATION WITH RESPECT TO THE DIRECTION OF FLOW.
- BELLOWS ARE NOT DESIGNED TO ABSORB ANY TORQUE, WHICH CAN LEAD TO PREMATURE FAILURE.

6 PIPE EXPANSION JOINT CONNECTION

100% FINAL BID DOCUMENTS	08-18-2017
100% BID DOCUMENTS-NOT FOR CONSTRUCTION	07-24-2017
95% CONSTRUCTION DOCUMENTS SUBMISSION	06-15-2017
65% DESIGN DEVELOPMENT SUBMISSION	04-19-2017
35% SCHEMATIC DESIGN SUBMISSION	03-06-2017
Revisions:	Date

CONSULTANTS:



MIDWESTERN CONSULTING

3815 Plaza Drive Ann Arbor, Michigan 48108  
(734) 995-0200 • www.midwesternconsulting.com  
Land Development • Land Survey • Institutional • Municipal  
Wireless Communications • Transportation • Landfill Services

KEYPLAN

ARCHITECT + ENGINEERS:



VA CONTRACT NO. VA250-17-C-0008

Drawing Title  
FIRE PROTECTION GENERAL NOTES,  
SYMBOLS AND LEGENDS

Approved Project Director

Project Title  
CONSTRUCT NORTH  
PARKING STRUCTURE

Location  
ANN ARBOR, MICHIGAN

Date  
08-18-2017

Checked  
GS

Drawn  
AQ

Project Number  
506-331

Building Number  
29

Drawing Number  
FP-001

Office of  
Construction  
and Facilities  
Management

