

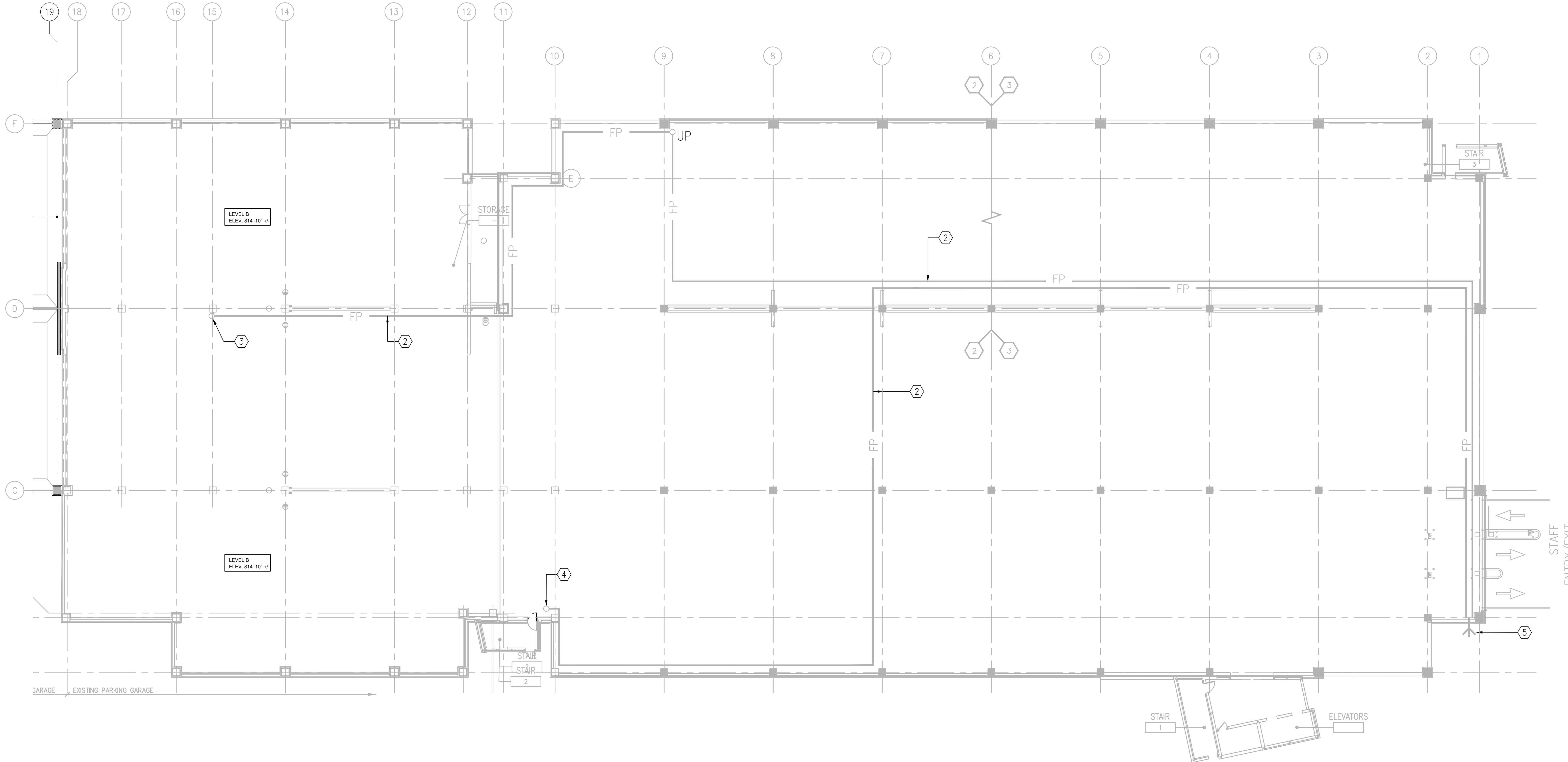
BUILDING ISOMETRIC

GENERAL NOTES

1. REFER TO DRAWING FP-001 FOR ABBREVIATIONS, SYMBOLS LIST AND TYPICAL DETAILS.
2. REFER TO DRAWING FP-002 FOR EXISTING FIRE PROTECTION SYSTEM PIPING ARRANGEMENT.
3. REFER TO SPECIFICATIONS DIVISION 01 GENERAL REQUIREMENTS.
4. REFER TO DIVISION 21 FIRE SUPPRESSION FOR PROJECT REQUIREMENTS.
5. REFER TO DRAWING G-004 FOR PROJECT CONSTRUCTION PHASING NOTES.
6. 4" DIAMETER O.S. AND "Y" ISOLATION VALVE SHALL BE IN LOCKED OPEN POSITION.
7. REFER TO FIRE PROTECTION ISOMETRIC ON SHEET FP001 FOR ADDITIONAL INFORMATION.

FIRE PROTECTION NOTES

1. EXISTING FIRE DEPARTMENT CONNECTION (FDC) THREE-WAY CONNECTION AT EXTERIOR BUILDING FACE IS SCHEDULED TO REMAIN.
2. EXISTING FIRE PROTECTION PIPING SYSTEM IS SCHEDULED TO REMAIN.
3. EXISTING FIRE PROTECTION DRY STAND PIPE RISERS ARE SCHEDULED TO REMAIN.
4. EXISTING 4"Ø FIRE PROTECTION RISER.
5. EXISTING FIRE DEPARTMENT SIAMESE CONNECTION.



1 LEVEL A - EXISTING FIRE PROTECTION PLAN

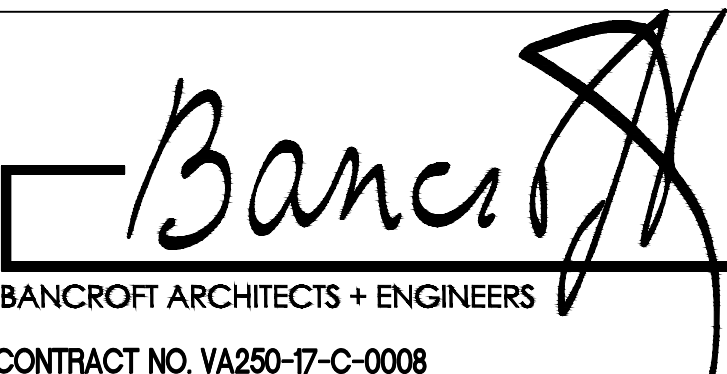
CONSULTANTS:



MIDWESTERN CONSULTING  
3815 Plaza Drive Ann Arbor, Michigan 48108  
(734) 995-0200 • www.midwesternconsulting.com  
Land Development • Land Survey • Institutional • Municipal  
Wireless Communications • Transportation • Landfill Services

KEYPLAN

ARCHITECT + ENGINEERS:



700 Nicholas Blvd., Suite 300  
Eli Grove Village, IL 60007  
Telephone : 847.952.9342  
www.bancroft-ae.com  
Bancroft-AE Project No. 14-121

Drawing Title

LEVEL A - EXISTING FIRE PROTECTION PLAN

Approved Project Director

Project Title

CONSTRUCT NORTH PARKING STRUCTURE

Location

ANN ARBOR, MICHIGAN

Date

08-18-2017

Checked

GS

Drawn

AQ

Project Number

506-331

Building Number

29

Drawing Number

FP-002

Office of Construction and Facilities Management

