

ADJUSTABLE CLEVIS HANGER
TYPE 1 - SEE SPECIFICATIONS

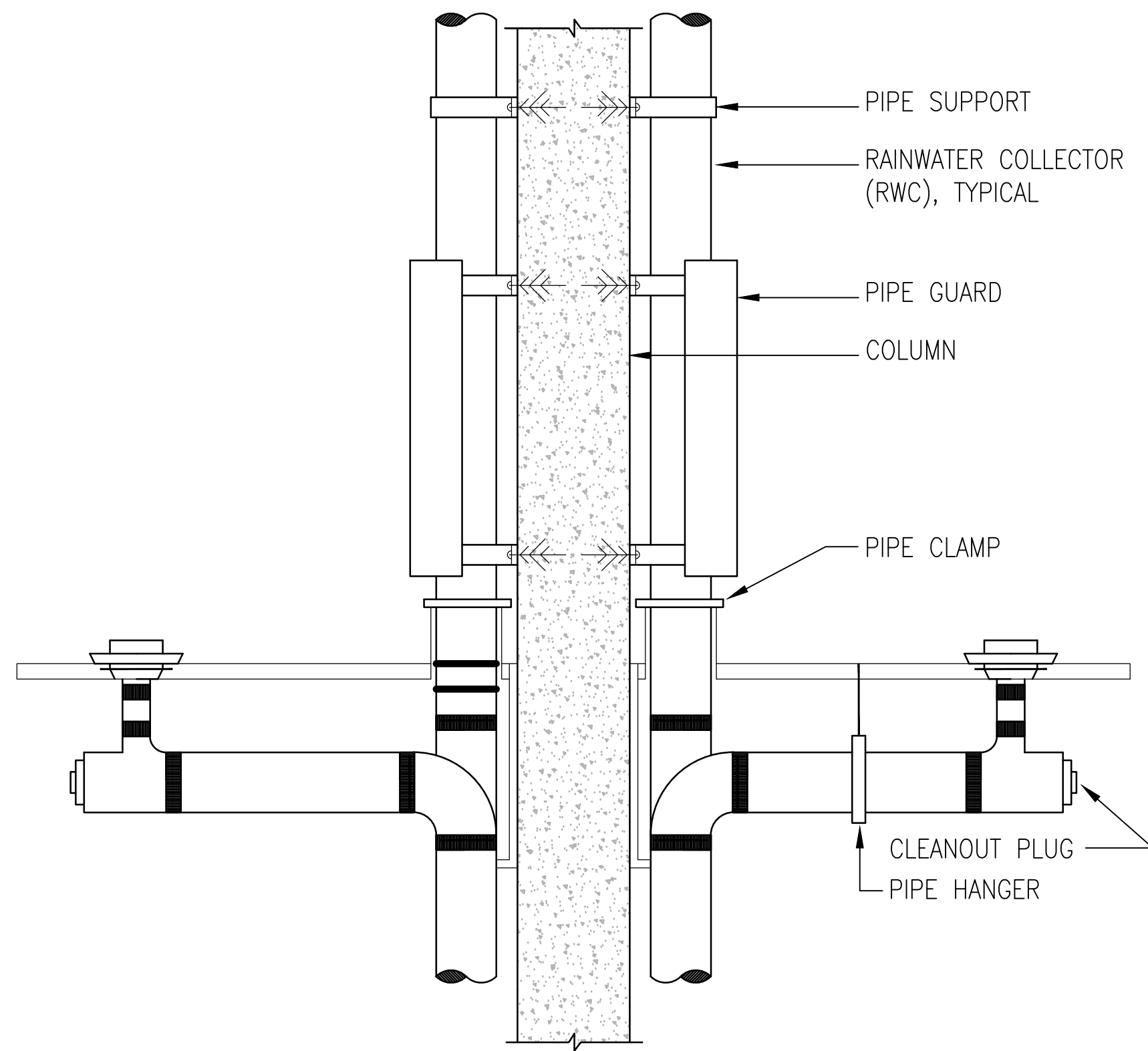
NOTES:
ALL MATERIALS AND HARDWARE
TO BE HOT DIPPED GALVANIZED.

MAXIMUM PIPE/TUBING SUPPORT SPACING																
NOM. SIZE	IN.	THRU 3/4	1	1 1/4	1 1/2	2	2 1/2	3	4	5	6	8	10	12	14	16
PIPE	FT.	7	7	7	9	10	11	12	14	16	17	19	22	23	25	27
TUBING	FT.	5 FT	6	7	8	8	9	10	12	13	14	16	-	-	-	-

NOTE: FOR TRAPEZE HANGER TAKE SPACING OF SMALLEST SIZE ON TRAPEZE.

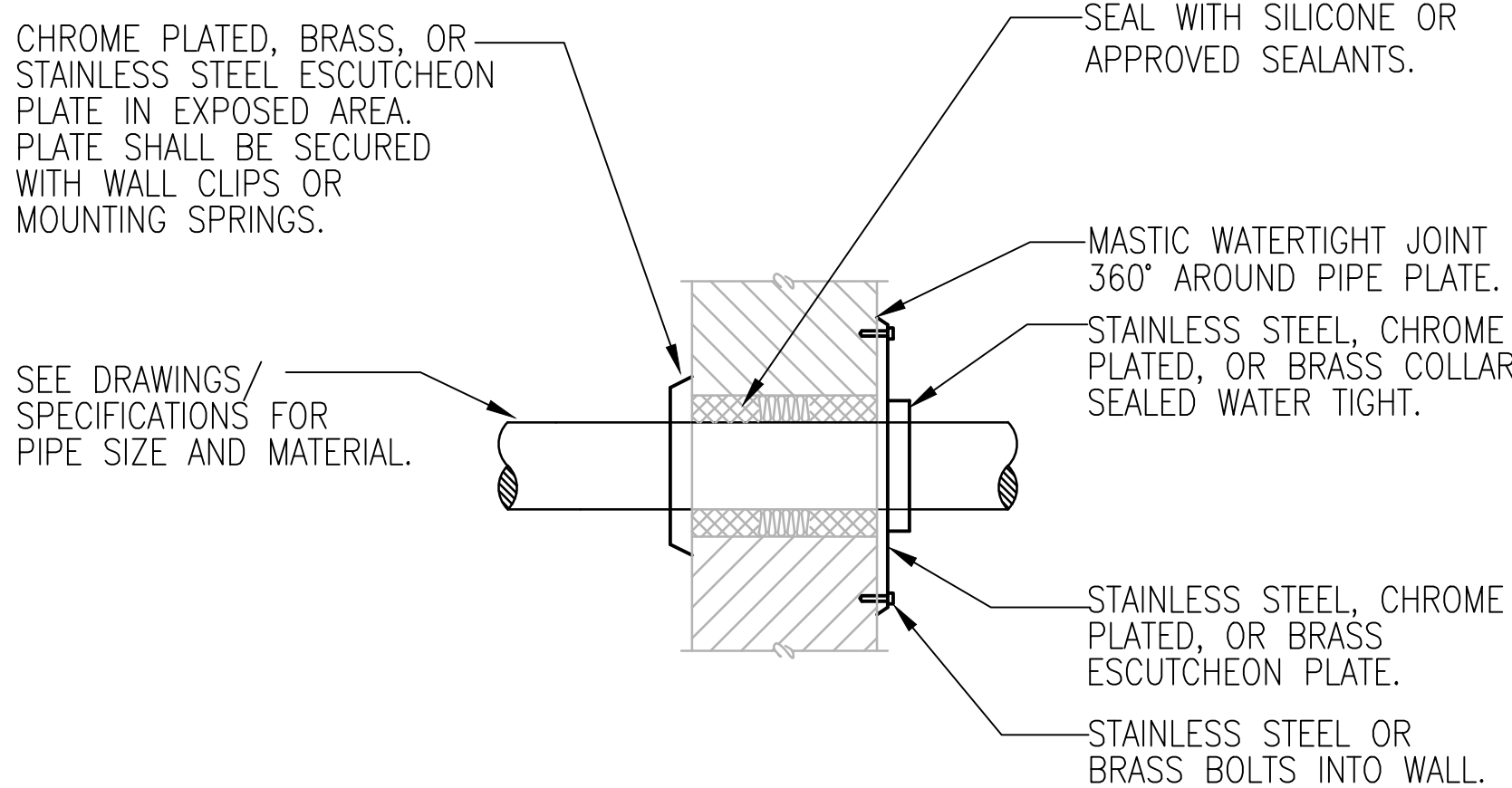
1 PIPE HANGER DETAIL

NTS



5 TYPICAL DRAINAGE DETAIL

NTS

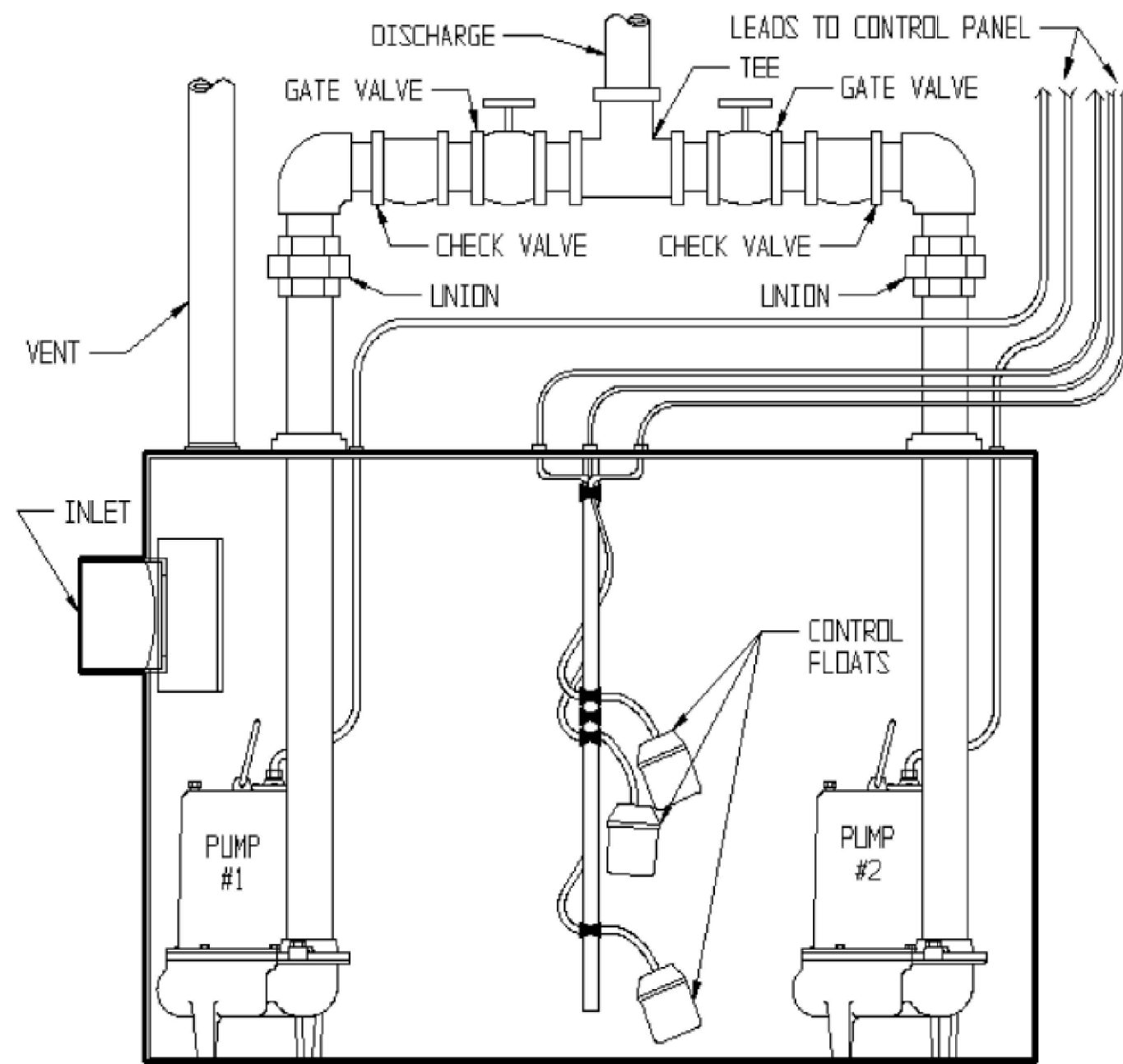


NOTES:

- CONTRACTOR SHALL ISOLATE ALL PIPES WHICH VIBRATE FROM CONSTRUCTION IN ORDER TO AVOID TRANSMISSION TO STRUCTURE.
- CONTRACTOR SHALL BE RESPONSIBLE FOR THE COORDINATION OF THEIR WALL OPENINGS WITH OTHER TRADES AND/OR CONTRACTORS.

2 PIPE THRU WALL DETAIL

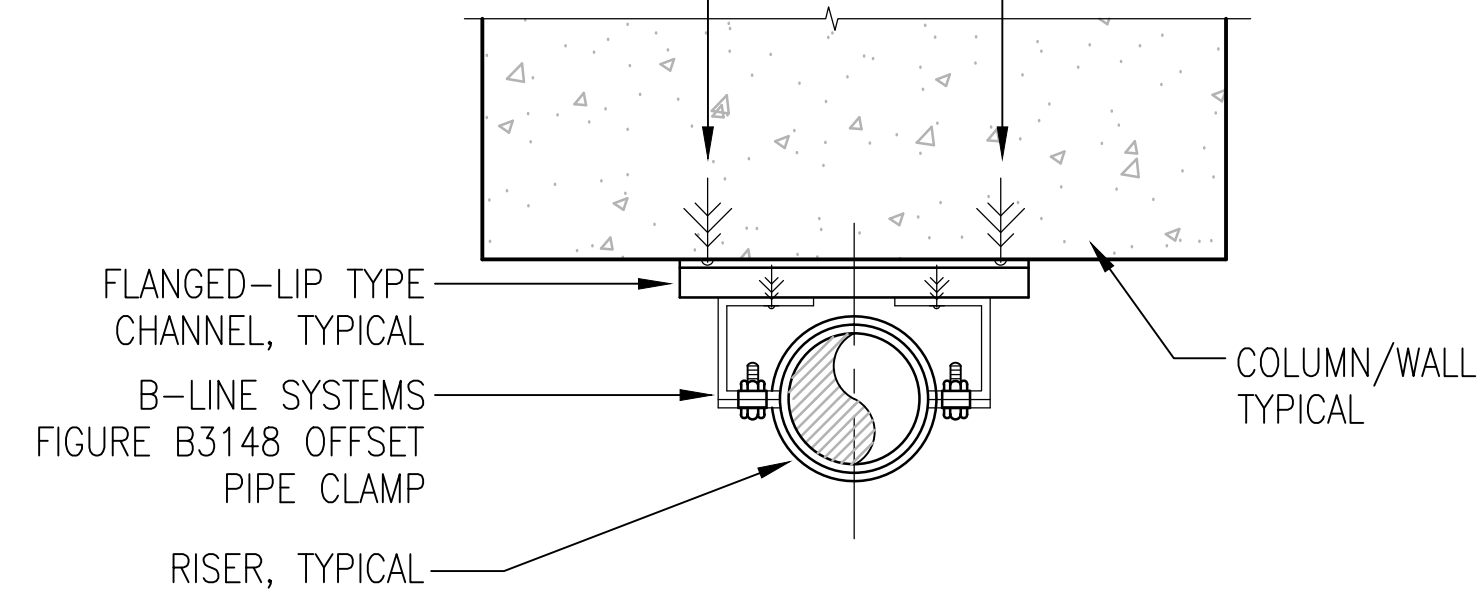
NTS



6 TYPICAL INSTALLATION DUPLEX SYSTEM

NTS

(2) 1/2" DIAMETER x 3-1/2" EXPANSION ANCHOR (COORDINATE ANCHOR LOCATIONS WITH REINFORCING) TYPICAL.

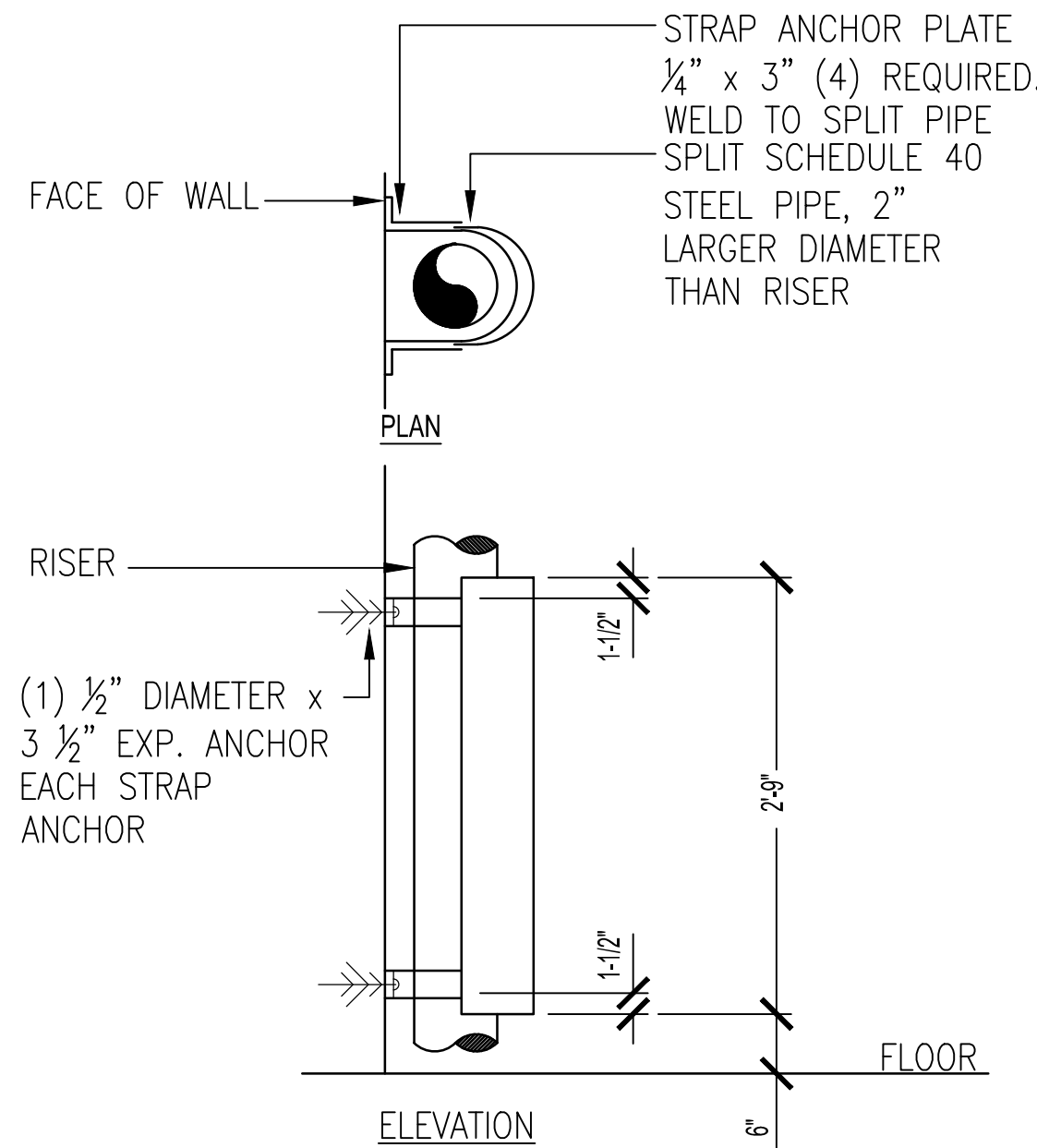


NOTES:

- ALL MATERIALS AND HARDWARE TO BE HOT DIPPED GALVANIZED.
- SPECIFY TYPE OF PIPE FOR SIZING PIPE CLAMPS.

3 PIPE SUPPORT DETAIL

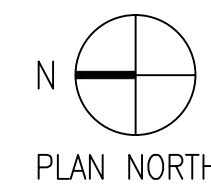
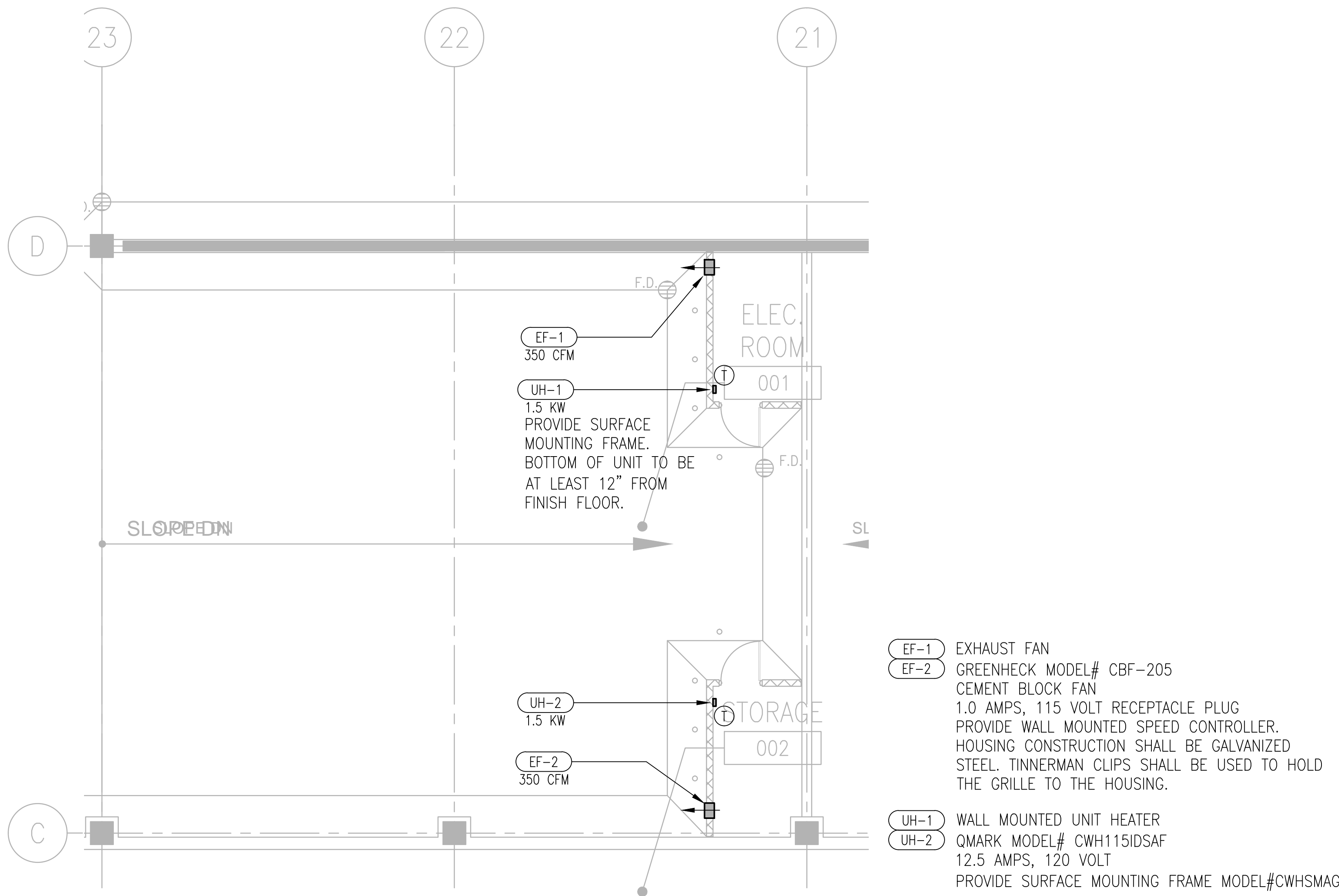
NTS



NOTE:
ALL PIPING, PLATES, HARDWARE, ETC., TO BE HOT DIPPED GALVANIZED

4 PIPE GUARD DETAIL

NTS



1 LEVEL A - PARTIAL MECHANICAL PLANS

3/32"=1'-0"

