

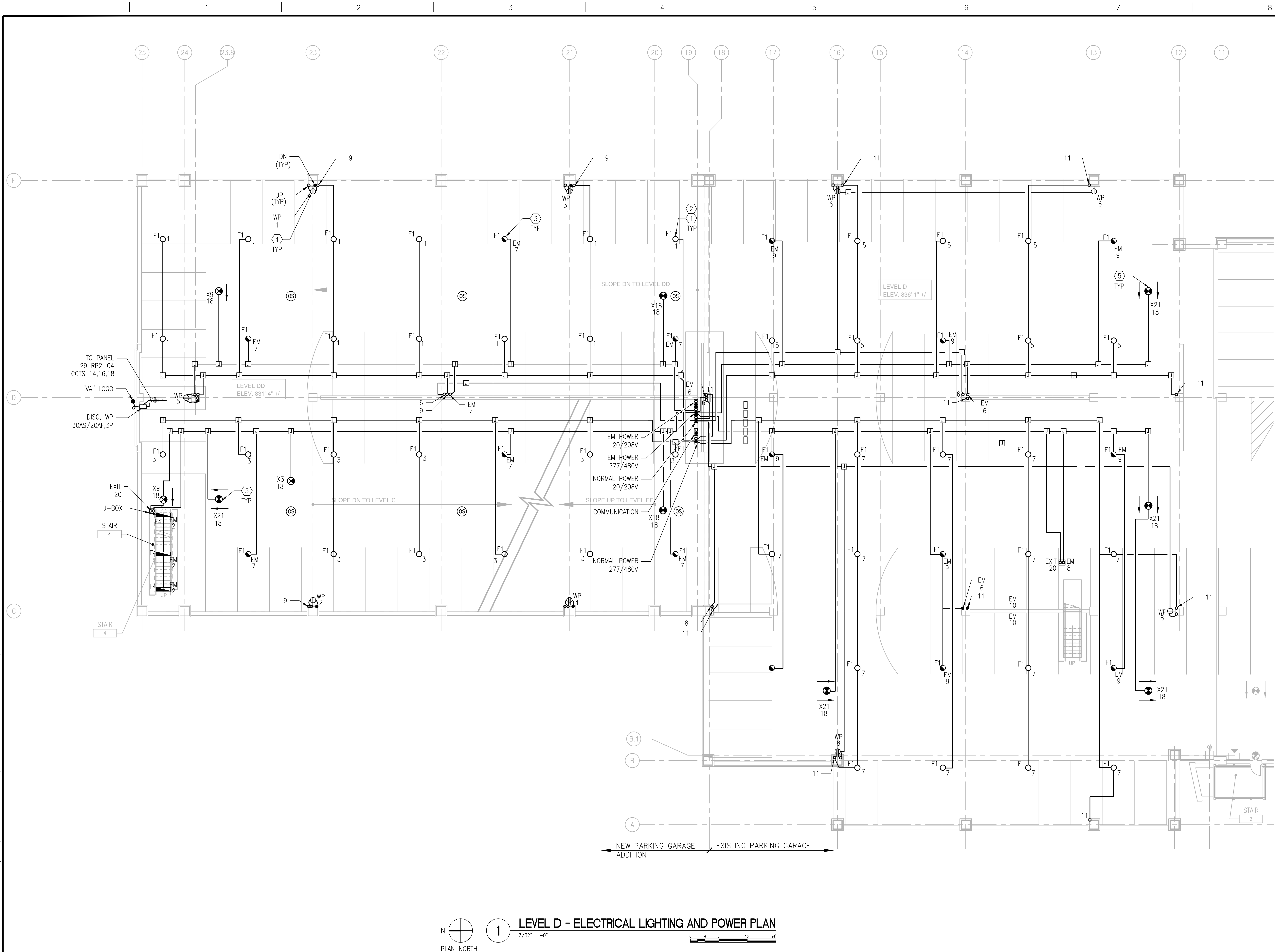
BUILDING ISOMETRIC

GENERAL NOTES

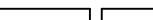




- REFER TO SPECIFICATIONS DIVISION 01 GENERAL REQUIREMENTS.
- REFER TO SPECIFICATIONS DIVISION 26 ELECTRICAL, DIVISION 27 COMMUNICATIONS AND DIVISION 28 ELECTRONIC SAFETY AND SECURITY FOR PROJECT SPECIFICATIONS AND REQUIREMENTS.
- REFER TO DRAWING G-004 FOR PROJECT CONSTRUCTION PHASING NOTES.
- REFER TO DRAWING E-001 FOR GENERAL ELECTRICAL NOTES, ELECTRICAL SYMBOLS LIST AND ABBREVIATIONS.
- REFER TO DRAWING ED-101 FOR ELECTRICAL DEMOLITION PLANS.
- REFER TO DRAWINGS EC-101 THROUGH EC-105 FOR FIRE ALARM SYSTEM AND SECURITY SYSTEM PLANS.
- CONDUIT ROUTING IS SHOWN DIAGRAMMATICALLY ON FLOOR PLANS. CONTRACTOR WILL PROVIDE SHOP DRAWING INDICATING ROUTING OF ALL CONDUIT SYSTEMS PRIOR TO INSTALLATION. REFER TO DETAIL 1 ON S-515 FOR THE LOCATION AND QUANTITIES OF BLOCKOUTS AT THE PRECAST CONCRETE DOUBLE TEE MEMBERS.

ELECTRICAL PLAN NOTES

- REFER TO STRUCTURAL AND ARCHITECTURAL DRAWINGS FOR PRECAST DOUBLE TEE MEMBERS AND DIMENSIONS.
- SUSPENDED LIGHT FIXTURES.
- SUSPENDED LIGHT FIXTURES CONNECTED TO EMERGENCY POWER SYSTEM.
- SURFACE MOUNTED POWER OUTLETS.
- SUSPENDED EXIT SIGNAGE SYSTEMS.



1 LEVEL D - ELECTRICAL LIGHTING AND POWER PLAN
3/32"=1'-0"

		CONSULTANTS:		KEYPLAN 		ARCHITECT + ENGINEERS:		Drawing Title		Project Title		Project Number		Office of Construction and Facilities Management  Department of Veterans Affairs	
		  M I D W E S T E R N C O N S U L T I N G 3815 Plaza Drive Ann Arbor, Michigan 48108 (734) 995-0260 • www.midwesternconsulting.com Land Development • Land Survey • Institutional • Municipal Wireless Communications • Transportation • Landfill Services		 BANCROFT ARCHITECTS + ENGINEERS VA CONTRACT NO. VA250-17-C-0008		700 Nicholas Blvd., Suite 300 Bk Grove Village, IL 60007 Telephone : 847.929.9362 www.bancroft-ae.com Bancroft+AE Project No. 16-121		LEVEL D - ELECTRICAL LIGHTING AND POWER PLAN		CONSTRUCT NORTH PARKING STRUCTURE		506-331			
100% FINAL BID DOCUMENTS		08-18-2017						Approved Project Director		Location		Drawing Number			
100% BID DOCUMENTS-NOT FOR CONSTRUCTION		07-24-2017								ANN ARBOR, MICHIGAN		E-104			
95% CONSTRUCTION DOCUMENTS SUBMISSION		06-15-2017								Date		Checked		Drawn	
65% DESIGN DEVELOPMENT SUBMISSION		04-19-2017								08-18-2017		LF		YY AG	
35% SCHEMATIC DESIGN SUBMISSION		03-06-2017													
Revisions:		Date													