

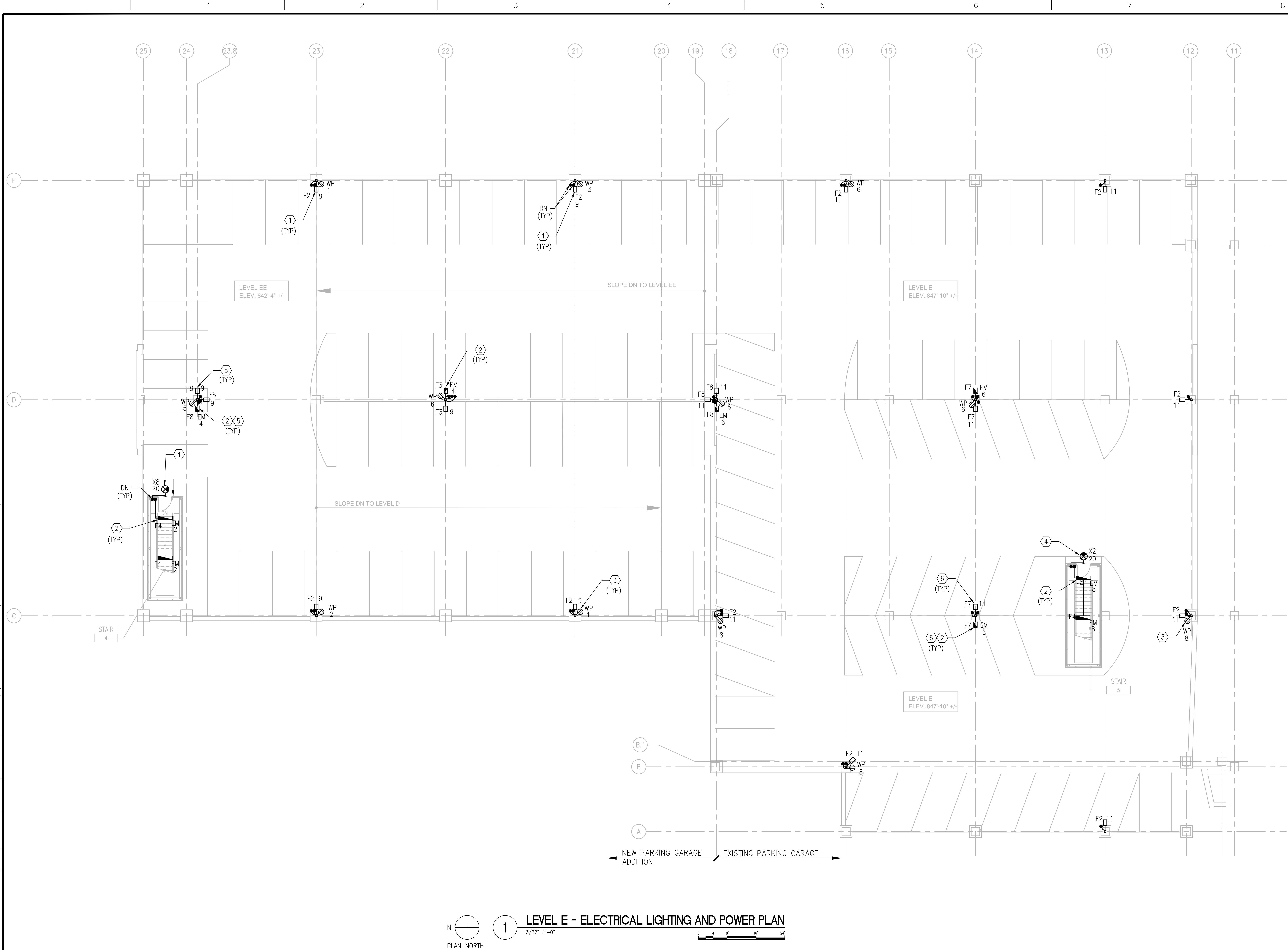
BUILDING ISOMETRIC

GENERAL NOTES



- REFER TO SPECIFICATIONS DIVISION 01 GENERAL REQUIREMENTS.
- REFER TO SPECIFICATIONS DIVISION 26 ELECTRICAL, DIVISION 27 COMMUNICATIONS AND DIVISION 28 ELECTRONIC SAFETY AND SECURITY FOR PROJECT SPECIFICATIONS AND REQUIREMENTS.
- REFER TO DRAWING G-004 FOR PROJECT CONSTRUCTION PHASING NOTES.
- REFER TO DRAWING E-001 FOR GENERAL ELECTRICAL NOTES, ELECTRICAL SYMBOLS LIST AND ABBREVIATIONS.
- REFER TO DRAWINGS ED-101 FOR ELECTRICAL DEMOLITION PLANS.
- REFER TO DRAWINGS EC-101 THROUGH EC-105 FOR FIRE ALARM SYSTEM AND SECURITY SYSTEM PLANS.
- CONDUIT ROUTING IS SHOWN DIAGRAMMATICALLY ON FLOOR PLANS. CONTRACTOR WILL PROVIDE SHOP DRAWING INDICATING ROUTING OF ALL CONDUIT SYSTEMS PRIOR TO INSTALLATION. REFER TO DETAIL 1 ON S-515 FOR THE LOCATION AND QUANTITIES OF BLOCKOUTS AT THE PRECAST DOUBLE TEE MEMBERS.

ELECTRICAL PLAN NOTES

- POLE MOUNTED LIGHT FIXTURES.
- LIGHT FIXTURES CONNECTED TO EMERGENCY POWER SYSTEM.
- SURFACE MOUNTED POWER OUTLETS.
- EXIT SIGNAGE SYSTEMS.
- FIXTURE F8: RELOCATE EXISTING LIGHT POLE AND RESPECTIVE LIGHT FIXTURES. THIS EXISTING LIGHT POLE HAS THREE (3) LIGHT FIXTURES. CONTRACTOR WILL DOCUMENT AND VERIFY BASE PLATE BOLT PATTERN WITH PRECAST SUB-CONTRACTOR FOR ANCHOR BOLTS INSERTS.
- FIXTURE F7: RELOCATE EXISTING LIGHT POLE AND RESPECTIVE LIGHT FIXTURES. THIS EXISTING LIGHT POLE HAS TWO (2) LIGHT FIXTURES. CONTRACTOR WILL DOCUMENT AND VERIFY BASE PLATE BOLT PATTERN WITH PRECAST SUB-CONTRACTOR FOR ANCHOR BOLTS INSERTS.



1 LEVEL E - ELECTRICAL LIGHTING AND POWER PLAN  
3/32"=1'-0"  
PLAN NORTH

CONSULTANTS:		KEYPLAN	ARCHITECT + ENGINEERS:	Drawing Title		Project Title		Project Number		Office of Construction and Facilities Management			
  <div>3815 Plaza Drive Ann Arbor, Michigan 48108 (734) 995-0200 • www.midwesternconsulting.com Land Development • Land Survey • Institutional • Municipal Wireless Communications • Transportation • Landfill Services</div>				LEVEL E - ELECTRICAL LIGHTING AND POWER PLAN		CONSTRUCT NORTH PARKING STRUCTURE		506-331					
<div>100% FINAL BID DOCUMENTS 08-18-2017 100% BID DOCUMENTS-NOT FOR CONSTRUCTION 07-24-2017 95% CONSTRUCTION DOCUMENTS SUBMISSION 06-15-2017 65% DESIGN DEVELOPMENT SUBMISSION 04-19-2017 35% SCHEMATIC DESIGN SUBMISSION 03-06-2017 Revisions: _____ Date _____</div>				Approved Project Director		Location ANN ARBOR, MICHIGAN		Building Number 29					
VA FORM 08-6231						Date 08-18-2017		Checked LF		Drawn YY AG			
								Drawing Number E-105					
				BANCROFT ARCHITECTS + ENGINEERS 700 Nicholas Blvd., Suite 300 Eli Grove Village, IL 60007 Telephone : 847.952.9342 www.bancroft-ae.com Bancroft-AE Project No. 16-121									
				VA CONTRACT NO. VA250-17-C-0008									