

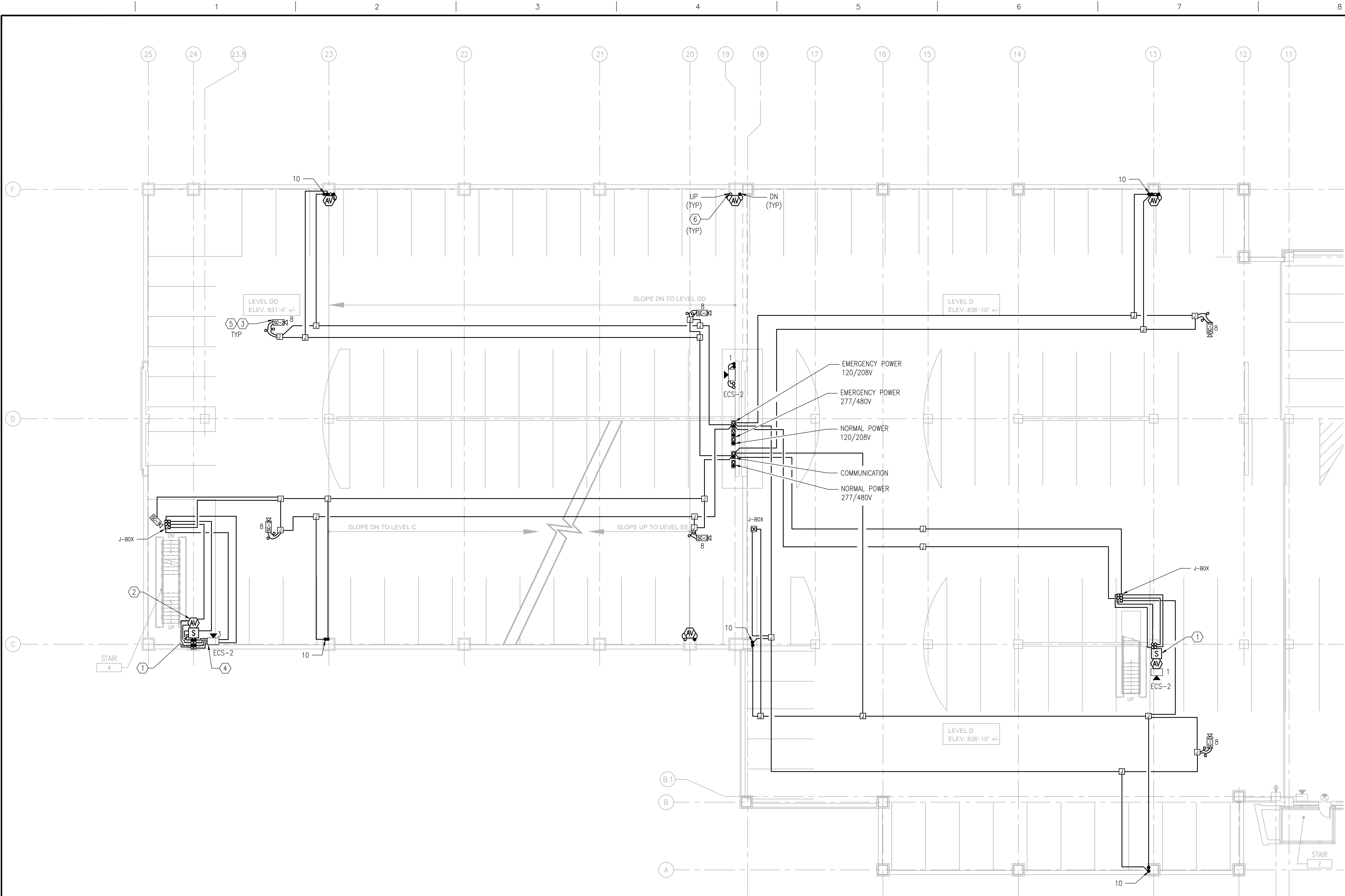
BUILDING ISOMETRIC

GENERAL NOTES

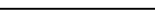




- REFER TO SPECIFICATIONS DIVISION 01 GENERAL REQUIREMENTS.
- REFER TO SPECIFICATIONS DIVISION 26 ELECTRICAL, DIVISION 27 COMMUNICATIONS AND DIVISION 28 ELECTRONIC SAFETY AND SECURITY FOR PROJECT SPECIFICATIONS AND REQUIREMENTS.
- REFER TO DRAWING G-004 FOR PROJECT CONSTRUCTION PHASING NOTES.
- REFER TO DRAWING E-001 FOR GENERAL ELECTRICAL NOTES, ELECTRICAL SYMBOLS LIST AND ABBREVIATIONS.
- REFER TO DRAWING ED-101 FOR ELECTRICAL DEMOLITION PLANS
- REFER TO DRAWINGS E-101 THROUGH E-105 FOR ELECTRICAL LIGHTING AND POWER SYSTEM PLANS.
- CONDUIT ROUTING IS SHOWN DIAGRAMMATICALLY ON FLOOR PLANS. CONTRACTOR WILL PROVIDE SHOP DRAWING INDICATING ROUTING OF ALL CONDUIT SYSTEMS PRIOR TO INSTALLATION. REFER TO DETAIL 1 ON S-515 FOR THE LOCATION AND QUANTITIES OF BLOCKOUTS AT THE PRECAST CONCRETE DOUBLE TEE MEMBERS.

FIRE ALARM PLAN NOTES

- FIRE ALARM PULL STATION.
- FIRE ALARM AUDIO/VISUAL DEVICE.
- SUSPENDED SECURITY CAMERA LOCATION.
- EMERGENCY COMMUNICATION CONDUIT/CABLE UP TO ECS-1 PEDESTAL MOUNTED AT LEVEL EE.
- SUSPENDED SECURITY CAMERA SYSTEM. IT SHOULD BE CIRCUITED TO PANEL 29 ER2-02.
- FAS CONDUITS SHALL BE 3/4" (19 MM) MINIMUM IN "RED" COLOR.



1 LEVEL D - COMMUNICATION, SURVEILLANCE AND FIRE ALARM
3/32"=1'-0"

		CONSULTANTS:		KEYPLAN 		ARCHITECT + ENGINEERS:		Drawing Title LEVEL D - COMMUNICATION, SURVEILLANCE AND FIRE ALARM PLAN		Project Title CONSTRUCT NORTH PARKING STRUCTURE		Project Number 506-331		Office of Construction and Facilities Management 			
		 WALKER PARKING CONSULTANTS 225 Andy Drive, Suite 1 Ann Arbor, MI 48108		 M I D W E S T E R N C O N S U L T I N G 3815 Plaza Drive Ann Arbor, Michigan 48108 (734) 995-0200 • www.midwesternconsulting.com Land Development • Land Survey • Institutional • Municipal Wireless Communications • Transportation • Landfill Services		 BANCROFT ARCHITECTS + ENGINEERS 700 Nicholas Blvd., Suite 300 Eli Grove Village, IL 60007 Telephone : 847.952.9342 www.bancroft-ae.com Bancroft-AE Project No. 14-121		Approved Project Director		Location ANN ARBOR, MICHIGAN		Drawing Number EC-104					
100% FINAL BID DOCUMENTS		08-18-2017								Date 08-18-2017		Checked LF				Drawn YY AG	
100% BID DOCUMENTS-NOT FOR CONSTRUCTION		07-24-2017															
95% CONSTRUCTION DOCUMENTS SUBMISSION		06-15-2017															
65% DESIGN DEVELOPMENT SUBMISSION		04-19-2017															
35% SCHEMATIC DESIGN SUBMISSION		03-06-2017															
Revisions:		Date															