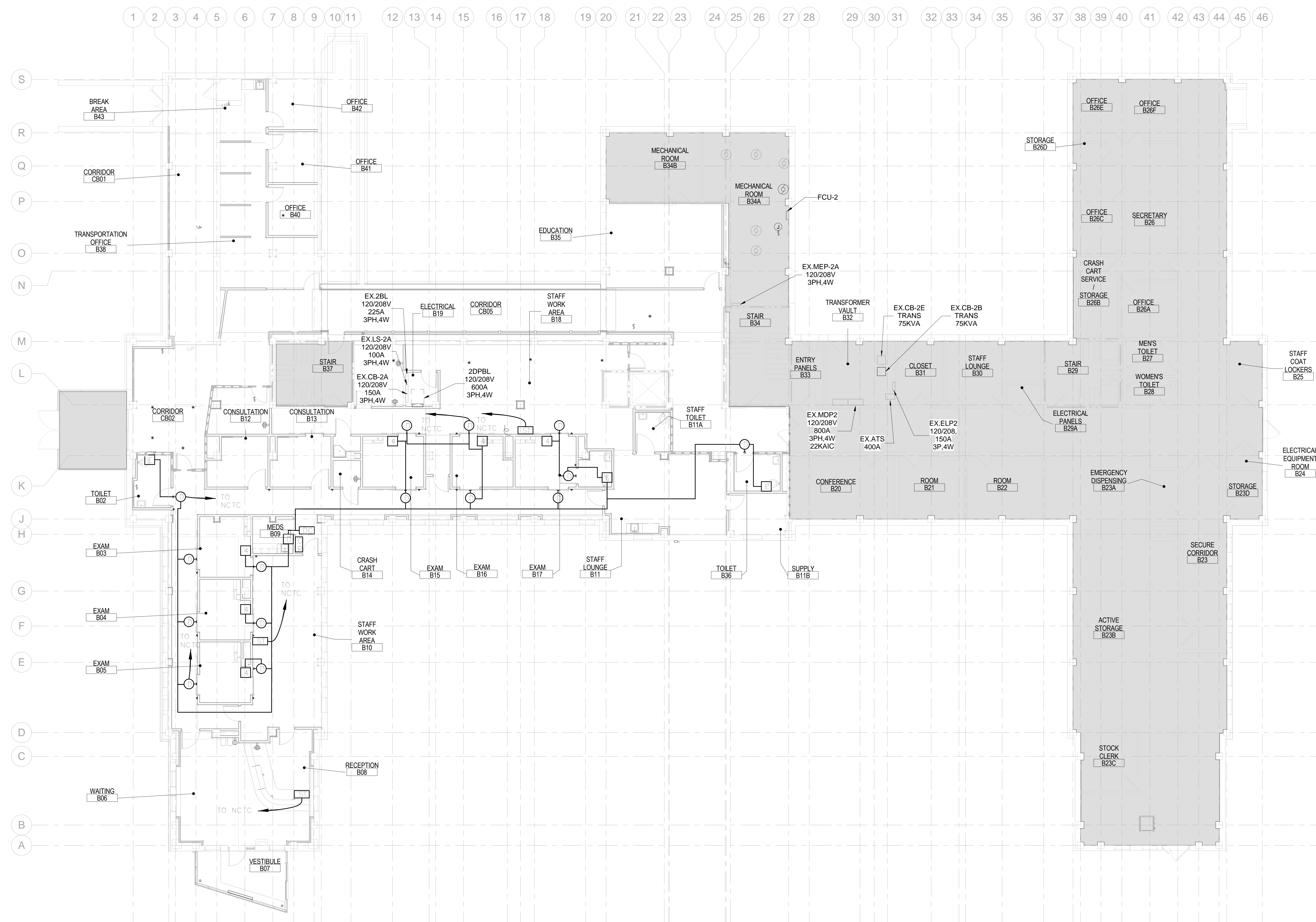


1. PROVIDE NURSE CALL SYSTEM AS SHOWN. PROVIDE NURSE CALL WIRING AS PER MANUFACTURER SPECIFICATION IN CONDUIT.

	AREA NOT IN PROJECT SCOPE
4	4-BUTTON STAFF-REGISTRATION STATION RAULAND MODEL 354017 OR APPROVED EQUAL
2	2-BUTTON STATION RAULAND MODEL 354015 OR APPROVED EQUAL
D	HOME LIGHT RAULAND MODEL 352010 OR APPROVED EQUAL
DC	HOMELESS CONTROLLER RAULAND MODEL 352021 OR APPROVED EQUAL
D	DUTY STATIONS RAULAND MODEL 353100 OR APPROVED EQUAL
E	EMERGENCY PULL CORD RAULAND MODEL 354001 OR APPROVED EQUAL
ST	STAFF TERMINAL RAULAND MODEL 353110 OR APPROVED EQUAL
NCTC	NURSE CALL TERMINAL CABINET RAULAND MODEL NC2828 OR APPROVED EQUAL
CR	CARD READER

DEDUCT ALTERNATE #3:  
THIS ENTIRE SHEET.



1 GROUND FLOOR - ELECTRICAL NURSE CALL PLAN  
1/8" = 1'-0"

ARCHITECTS + ENGINEERS:



Drawing Title:  
ELECTRICAL GROUND FLOOR NURSE CALL  
PLAN

Approved: Project Director

Project Title	COATESVILLE VAMC RENOVATE BUILDING 2 WEST
---------------	--

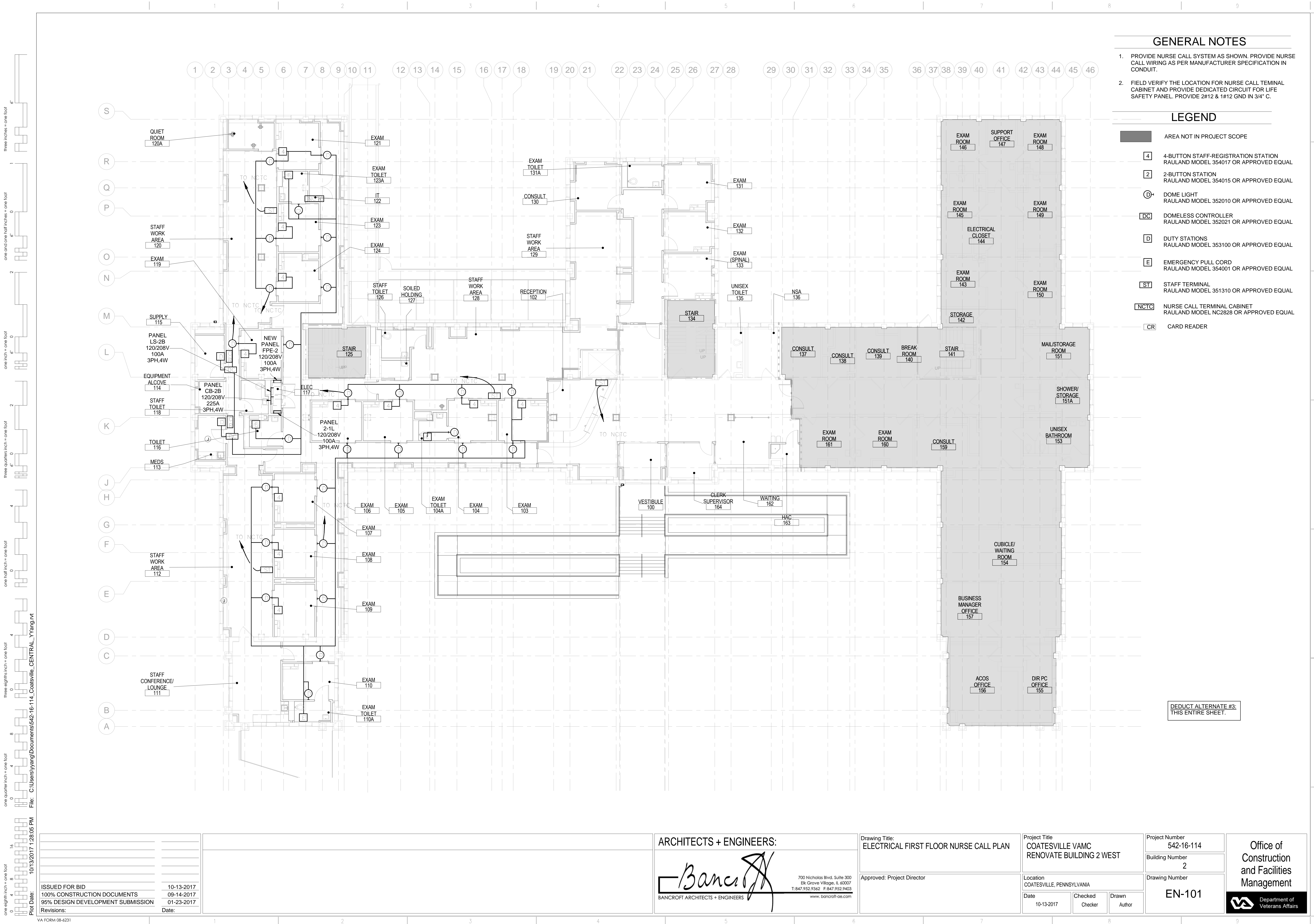
Location	COATESVILLE, PENNSYLVANIA
----------	---------------------------

Project Number	542-16-114
Building Number	

Drawing Number	EN-100
----------------	--------

Office of  
Construction  
and Facilities  
Management





GENERAL NOTES

1. PROVIDE NURSE CALL SYSTEM AS SHOWN. PROVIDE NURSE CALL WIRING AS PER MANUFACTURER SPECIFICATION IN CONDUIT.
2. FIELD VERIFY THE LOCATION FOR NURSE CALL TERMINAL CABINET AND PROVIDE DEDICATED CIRCUIT FOR LIFE SAFETY PANEL. PROVIDE 2#12 & 1#12 GND IN 3/4" C.

LEGEND

- AREA NOT IN PROJECT SCOPE
- 4-BUTTON STAFF-REGISTRATION STATION  
RAULAND MODEL 354017 OR APPROVED EQUAL
- 2-BUTTON STATION  
RAULAND MODEL 354015 OR APPROVED EQUAL
- DOMELIGHT  
RAULAND MODEL 352010 OR APPROVED EQUAL
- DOMELIGHT CONTROLLER  
RAULAND MODEL 352021 OR APPROVED EQUAL
- DUTY STATIONS  
RAULAND MODEL 353100 OR APPROVED EQUAL
- EMERGENCY PULL CORD  
RAULAND MODEL 354001 OR APPROVED EQUAL
- STAFF TERMINAL  
RAULAND MODEL 351310 OR APPROVED EQUAL
- NURSE CALL TERMINAL CABINET  
RAULAND MODEL NC2828 OR APPROVED EQUAL
- CARD READER

DEDUCT ALTERNATE #3:  
THIS ENTIRE SHEET.

ARCHITECTS + ENGINEERS:

**Bancroft**  
BANCROFT ARCHITECTS + ENGINEERS  
700 Nicholas Blvd, Suite 300  
Bk Grove Village, IL 60007  
T: 847.952.9342 F: 847.952.9403  
www.bancroft-ae.com

Drawing Title:  
ELECTRICAL FIRST FLOOR NURSE CALL PLAN

Approved: Project Director

Project Title  
COATESVILLE VAMC  
RENOVATE BUILDING 2 WEST

Location  
COATESVILLE, PENNSYLVANIA

Date  
10-13-2017

Checked  
Checker

Drawn  
Author

Project Number  
542-16-114

Building Number  
2

Drawing Number  
EN-101

Office of  
Construction  
and Facilities  
Management

Department of  
Veterans Affairs