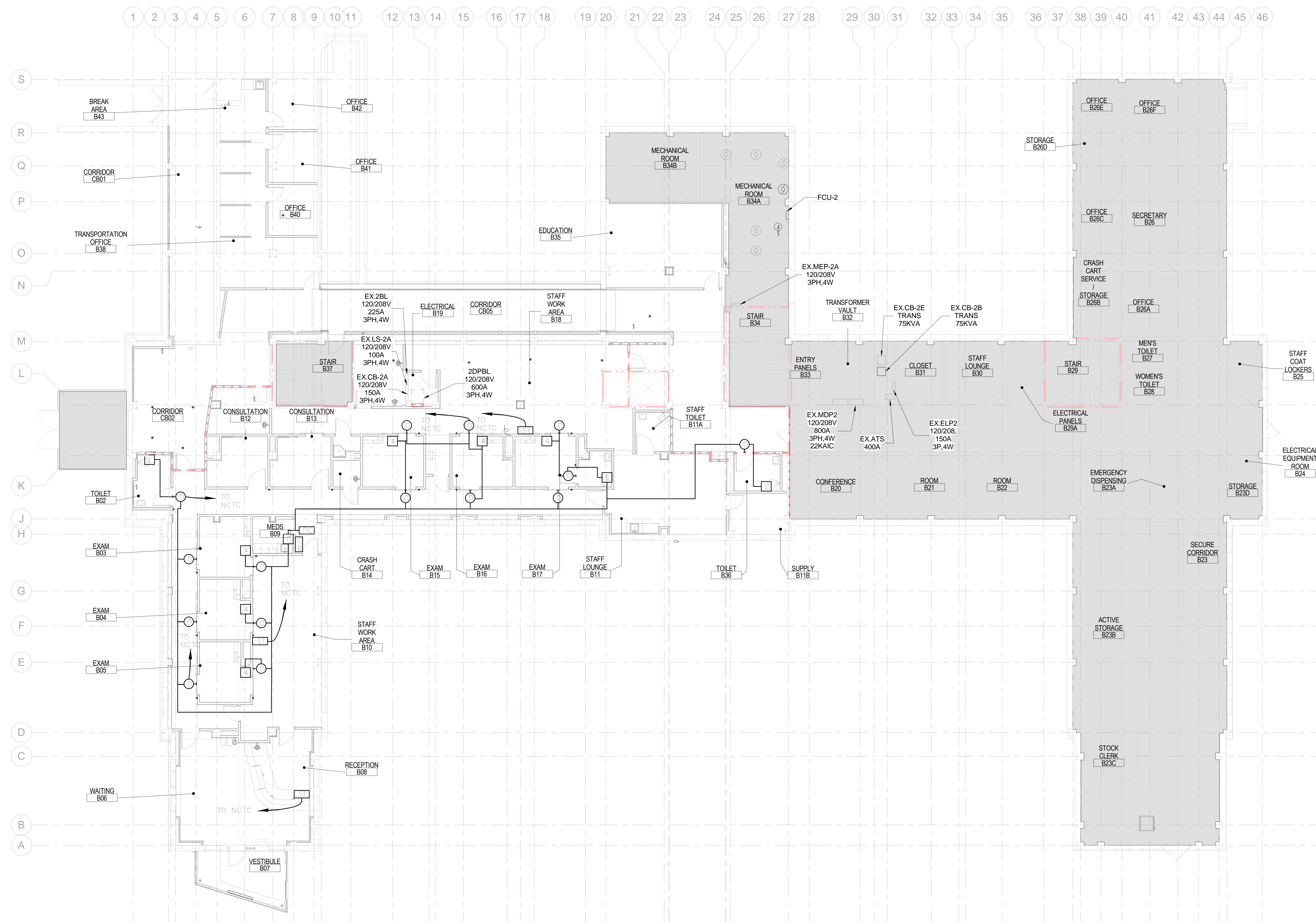


1. PROVIDE NURSE CALL SYSTEM AS SHOWN. PROVIDE NURSE CALL WIRING AS PER MANUFACTURER SPECIFICATION IN CONDUIT.

	AREA NOT IN PROJECT SCOPE
4	4-BUTTON STAFF-REGISTRATION STATION RAULAND MODEL 354017 OR APPROVED EQUAL
2	2-BUTTON STATION RAULAND MODEL 354015 OR APPROVED EQUAL
D	DOMELIGHT RAULAND MODEL 352010 OR APPROVED EQUAL
DC	DOMELIGHT RAULAND MODEL 352021 OR APPROVED EQUAL
D	DUTY STATIONS RAULAND MODEL 353100 OR APPROVED EQUAL
E	EMERGENCY PULL CORD RAULAND MODEL 354001 OR APPROVED EQUAL
ST	STAFF TERMINAL RAULAND MODEL 353110 OR APPROVED EQUAL
NCTC	NURSE CALL TERMINAL CABINET RAULAND MODEL NC2828 OR APPROVED EQUAL
CR	CARD READER

DEDUCTIVE ALTERNATE #2  
THIS ENTIRE SHEET



1 GROUND FLOOR - ELECTRICAL NURSE CALL PLAN  
1/8" = 1'-0"

ARCHITECTS + ENGINEERS:

 **Bancroft**  
BANCROFT ARCHITECTS + ENGINEERS

700 Nicholas Blvd., Suite 300  
Elk Grove Village, IL 60007  
T: 847.952.9362 F: 847.952.9403  
[www.bancroft-ae.com](http://www.bancroft-ae.com)

Drawing Title:  
ELECTRICAL GROUND FLOOR NURSE CALL  
PLAN

Approved: Project Director

Project Title	COATESVILLE VAMC RENOVATE BUILDING 2 WEST
---------------	--

	Location

Date	Checked	Drawn
10-13-2017	Checker	Author

Project Number	542-16-114
Building Number	2
Drawing Number	EN-100

Office of  
Construction  
and Facilities  
Management

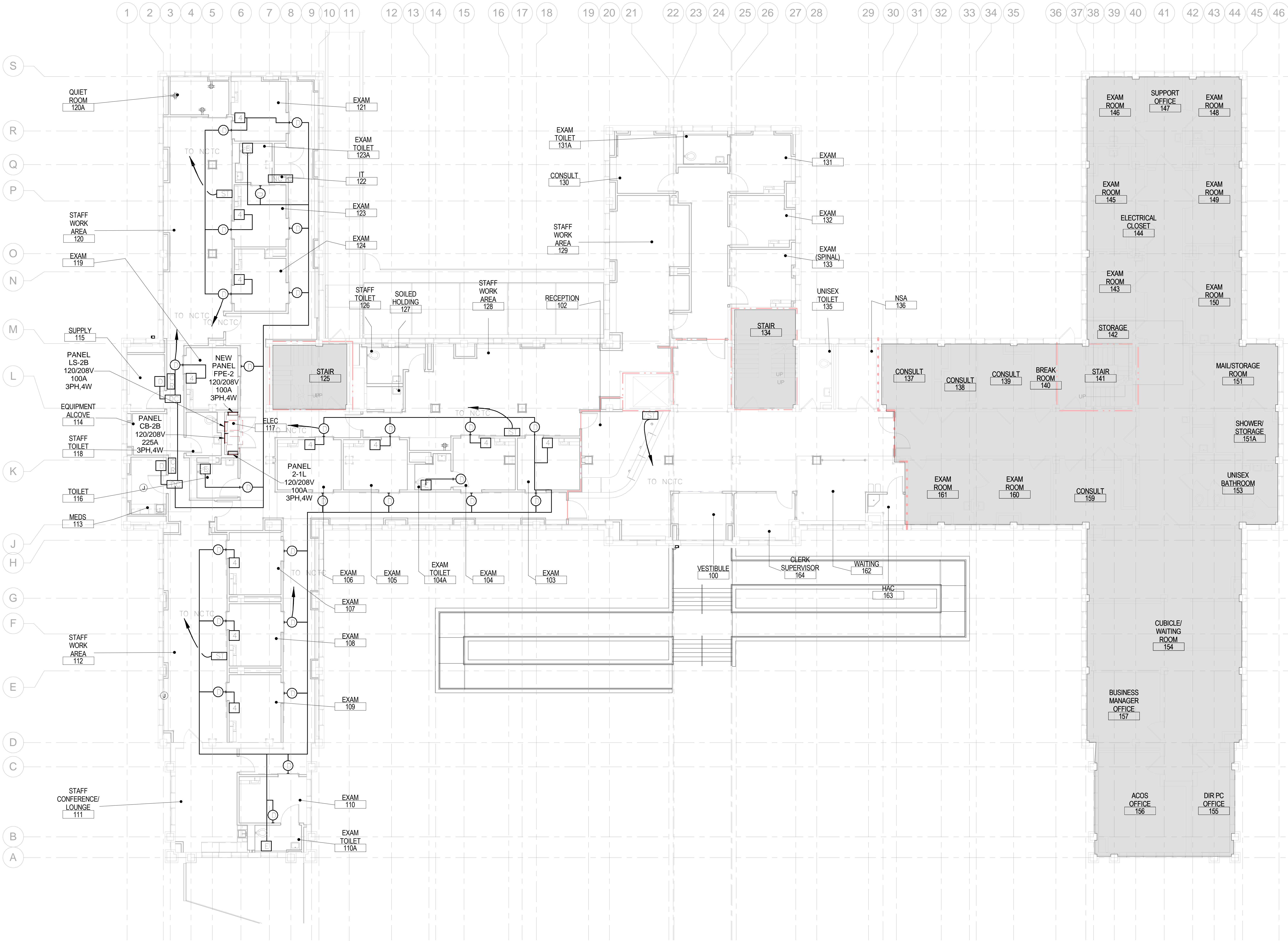


Department of  
Veterans Affairs

ISSUED FOR BID - NOT FOR CONSTRUCTION



three inches = one foot  
one and one half inches = one foot  
one inch = one foot  
three quarters inch = one foot  
one half inch = one foot  
three eighths inch = one foot  
one quarter inch = one foot  
one eighth inch = one foot  
Plot Date: 10/27/2017 12:18:19 PM  
File: C:\Users\ddibbs\Documents\642-16-114\_Coatesville\_CENTRAL\_Dibbs.rvt  
10/27/2017 12:18:19 PM  
100% CONSTRUCTION DOCUMENTS  
95% DESIGN DEVELOPMENT SUBMISSION  
Revisions:  
Date:



GENERAL NOTES

1. PROVIDE NURSE CALL SYSTEM AS SHOWN. PROVIDE NURSE CALL WIRING AS PER MANUFACTURER SPECIFICATION IN CONDUIT.
2. FIELD VERIFY THE LOCATION FOR NURSE CALL TERMINAL CABINET AND PROVIDE DEDICATED CIRCUIT FOR LIFE SAFETY PANEL. PROVIDE 2#12 & 1#12 GND IN 3/4" C.

LEGEND

- AREA NOT IN PROJECT SCOPE
- 4 4-BUTTON STAFF-REGISTRATION STATION  
RAULAND MODEL 354017 OR APPROVED EQUAL
  - 2 2-BUTTON STATION  
RAULAND MODEL 354015 OR APPROVED EQUAL
  - D+ DOME LIGHT  
RAULAND MODEL 352010 OR APPROVED EQUAL
  - DC DOMELESS CONTROLLER  
RAULAND MODEL 352021 OR APPROVED EQUAL
  - D DUTY STATIONS  
RAULAND MODEL 353100 OR APPROVED EQUAL
  - E EMERGENCY PULL CORD  
RAULAND MODEL 354001 OR APPROVED EQUAL
  - ST STAFF TERMINAL  
RAULAND MODEL 351310 OR APPROVED EQUAL
  - NCTC NURSE CALL TERMINAL CABINET  
RAULAND MODEL NC2828 OR APPROVED EQUAL
  - CR CARD READER

DEDUCTIVE ALTERNATE #2:  
THIS ENTIRE SHEET.

ARCHITECTS + ENGINEERS:

**Bancroft**  
BANCROFT ARCHITECTS + ENGINEERS  
700 Nicholas Blvd, Suite 300  
Bk Grove Village, IL 60007  
T: 847.952.9362 F: 847.952.9403  
www.bancroft-ae.com

Drawing Title:  
ELECTRICAL FIRST FLOOR NURSE CALL PLAN  
Approved: Project Director

Project Title  
COATESVILLE VAMC  
RENOVATE BUILDING 2 WEST  
Location  
COATESVILLE, PENNSYLVANIA  
Date  
10-13-2017  
Checked  
Checker  
Drawn  
Author

Project Number  
542-16-114  
Building Number  
2  
Drawing Number  
EN-101

Office of  
Construction  
and Facilities  
Management  
Department of  
Veterans Affairs