

QUESTIONS AND ANSWERS TO RFI's

1. **Q:** Conduit and boxes need to be installed above the ceiling in the IH&S trailer, but the ceiling is drywall. Will the contractor be required to demo the ceiling and repair as needed?

A: Yes, Refer to E001/Notes D/E.

2. **Q:** Please verify if J-Hooks are acceptable for the armored fiber cable. Specs state that all cable shall be in conduit?

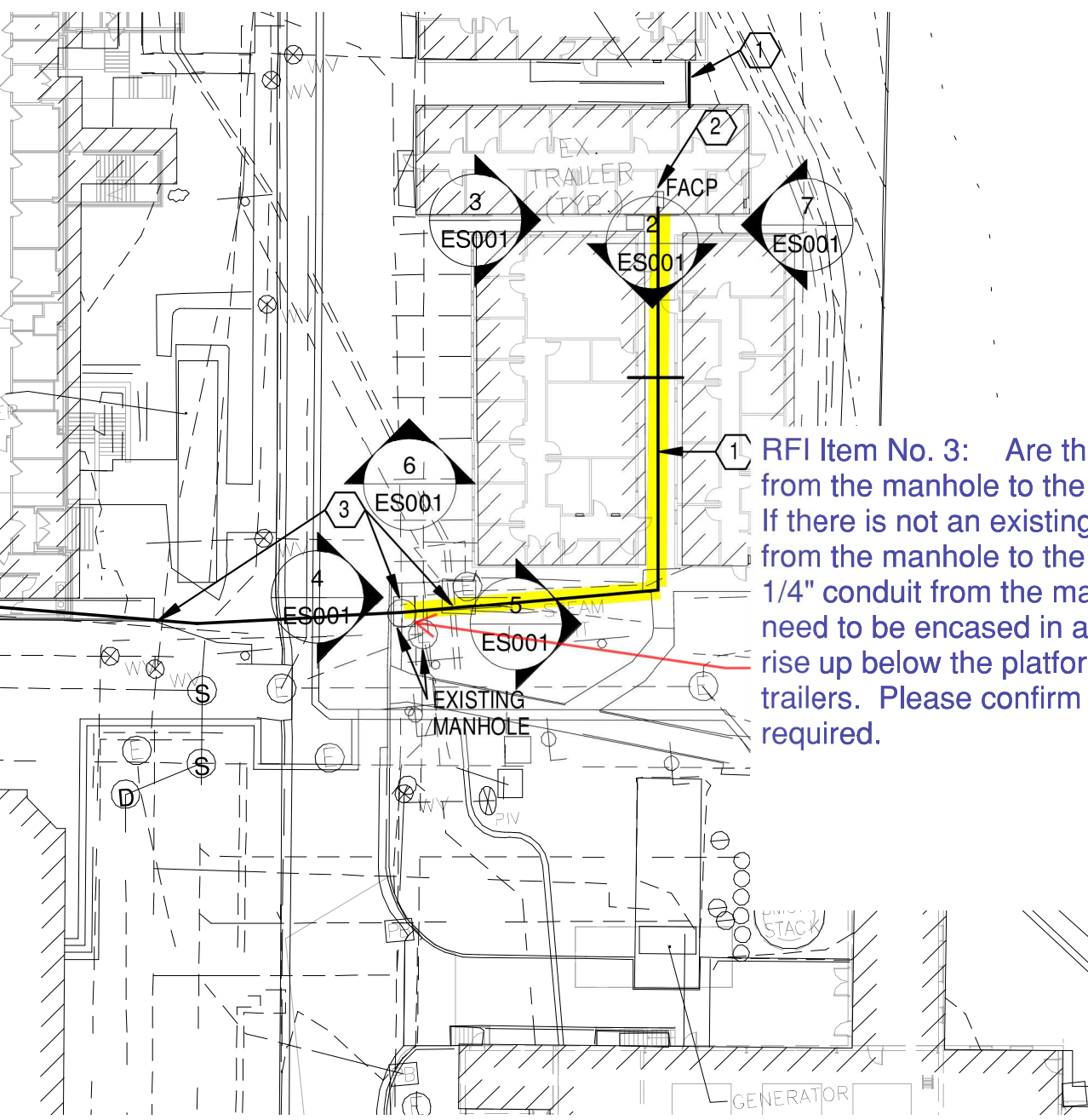
A: J-Hooks are acceptable for armored fiber.

3. **Q:** Are there any ductbanks from the manhole to the trailers? Please see attached sketch-A. If there is not an existing ductbank in place from the manhole to the trailers will the 1-1/4" conduit from the manhole need to be encased in a trench and then rise up below the platform between the trailers. Please confirm trench details if required.

A: Provide 2-2" PVC conduit concrete encase 30" below grade from trailer to manhole near street.

4. **Q:** Can you provide us the current service provider for the existing Honeywell fire alarm system?

A: Courtney Shoemaker, Honeywell, (614) 800-9450, Courtney.shoemaker@honeywell.com.



RFI Item No. 3: Are there any ductbanks from the manhole to the trailers. If there is not an existing ductbank in place from the manhole to the trailers will the 1 1/4" conduit from the manhole need to be encased in a trench and then rise up below the platform between the trailers. Please confirm trench details if required.

