

A circular logo with a horizontal line. The number '1' is in the upper half, and 'MD102' is in the lower half.

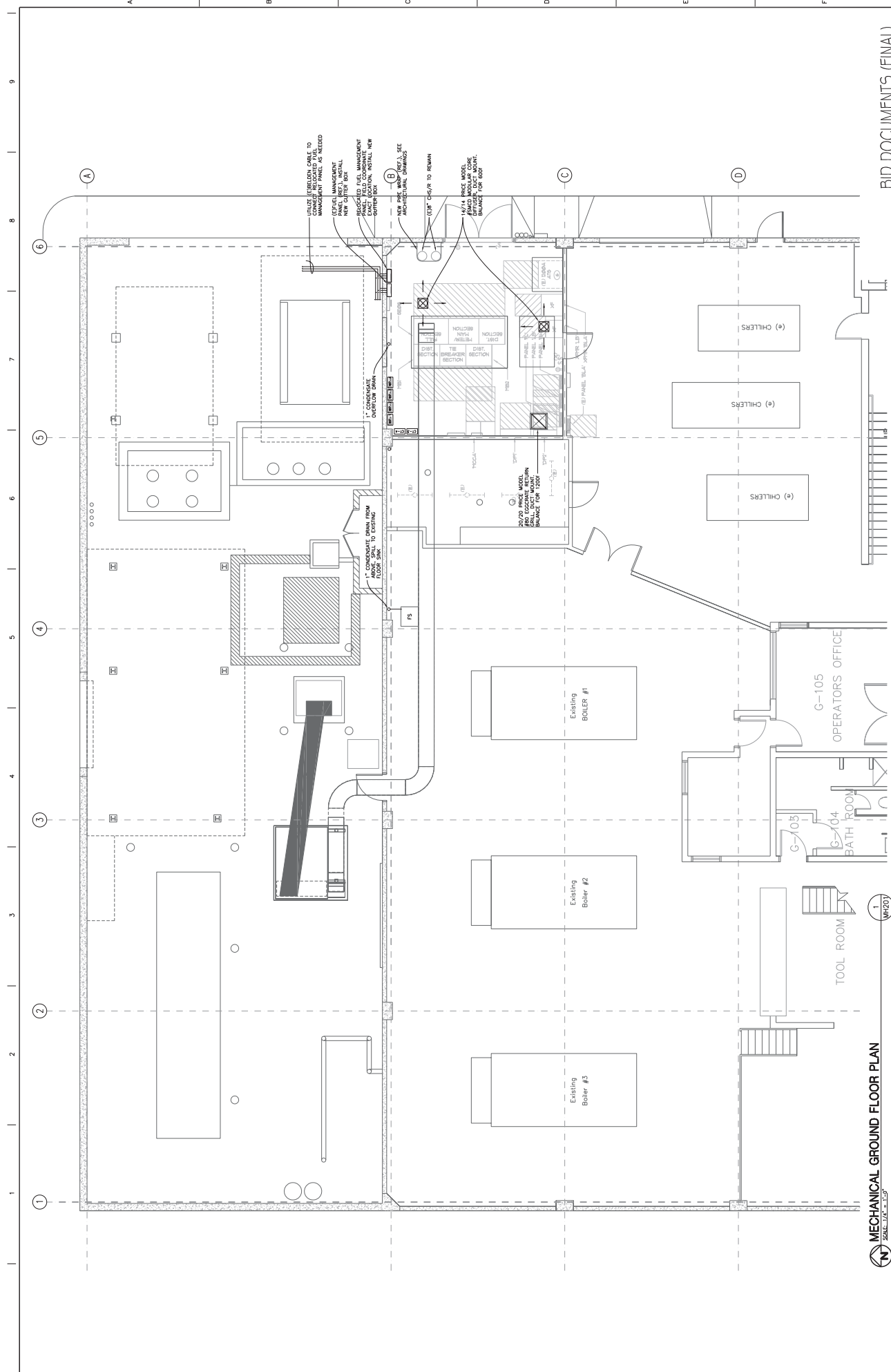
AINSWORTH ASSOCIATES
MECHANICAL ENGINEERS
3741 BUSINESS DR.
SACRAMENTO, CA 95826
TEL: 916-373-6804
FAX: 916-373-4055
WWW.AINSWORTH.COM



Project Title RELOCATE BOILER PLANT ELECTRICAL ROOM	Location 975 Kirman Avenue, Reno,	Checked SA
		Date 9-14-17



**Office of
Construction
and Facilities
Management**



MECHANICAL GROUND FLOOR PLAN
 SCALE: 1/4" = 1'-0"

BID DOCUMENTS (FINAL)

CONSULTANTS  AINSWORTH ASSOCIATES MECHANICAL ENGINEERS 1000 BROADWAY, SUITE 200 NEW YORK, NY 10018 TEL: 212-691-1000 FAX: 212-691-1001 www.ainsworth.com		ARCHITECT/ENGINEERS H+K ARCHITECTS 5485 Reno Corporate Dr., Ste. 100 Reno, Nevada 89511-2202 P 775-332-4640 F 775-332-4642 harchitects.com				MECHANICAL GROUND FLOOR PLAN Project No. 654-16-032 Drawing No. 8 Drawing Date 9-14-17 Checked SA Drawn RG		Office of Construction and Facilities Management Project No. 654-16-032 Drawing No. 8 Drawing Date 9-14-17 Checked SA Drawn RG	
--	--	--	--	---	--	--	--	--	--



MECHANICAL MEZZANINE PLAN
SCALE: 1/4" = 1'-0"

1
MH202

CONSULTANTS

AINSWORTH ASSOCIATES
ARCHITECTS
1000 CALIFORNIA STREET, SUITE 100
SACRAMENTO, CA 95811
TEL: 916-441-1000 FAX: 916-441-1001
WWW.AINSWORTHASSOCIATES.COM



AINSWORTH ASSOCIATES
ARCHITECTS
1000 CALIFORNIA STREET, SUITE 100
SACRAMENTO, CA 95811
TEL: 916-441-1000 FAX: 916-441-1001
WWW.AINSWORTHASSOCIATES.COM



ARCHITECT/ENGINEERS
H+K ARCHITECTS
5485 Reno Corporate Dr., Ste. 100
Reno, Nevada 89511-2202
P 775-332-4640
F 775-332-4642
Hkarchitects.com

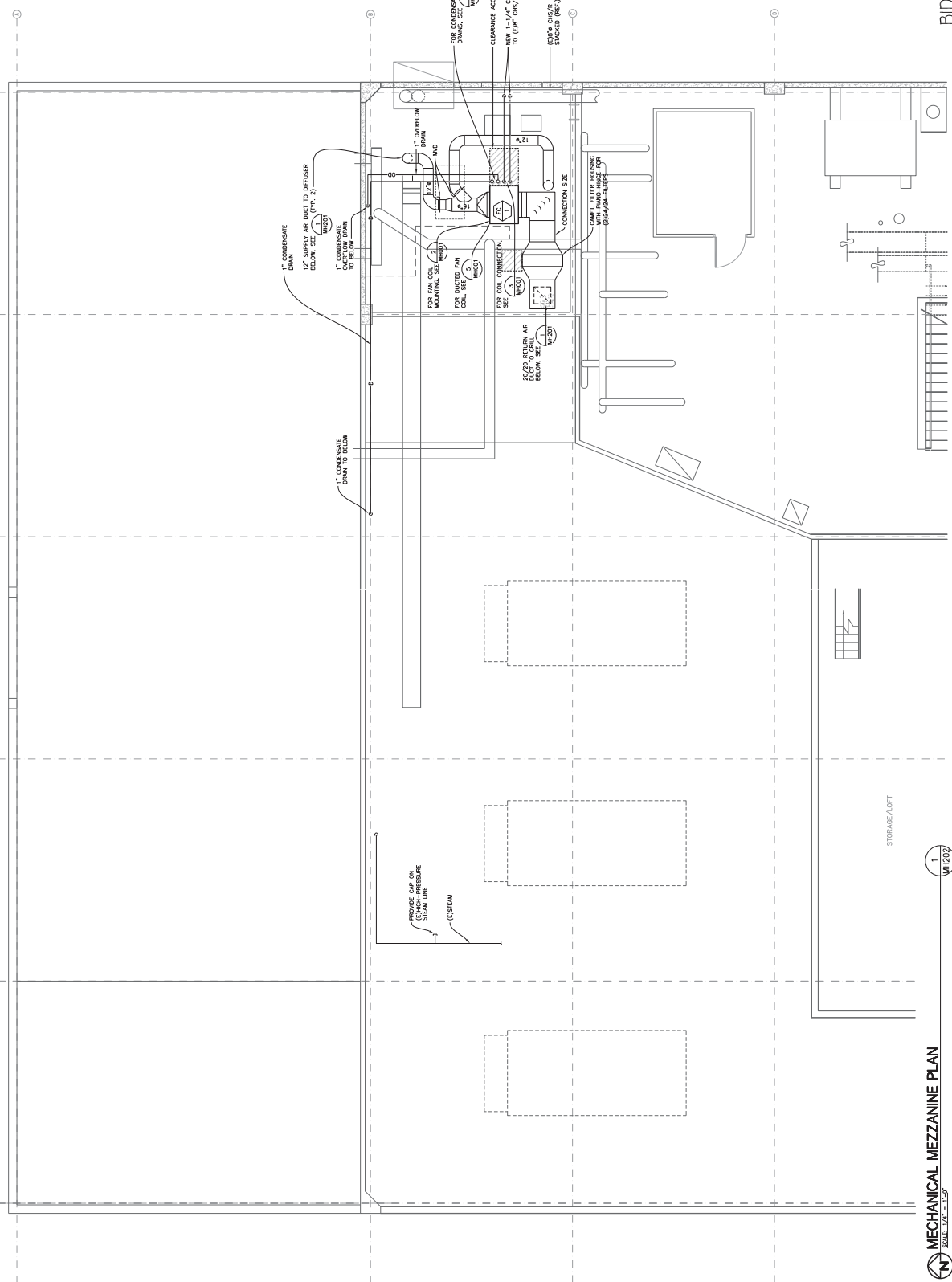


MECHANICAL MEZZANINE PLAN
Approved Project Owner

**RELOCATE BOILER PLANT
ELECTRICAL ROOM**
Location: 975 Korman Avenue, Reno, NV 89502
Date: 9-14-17
Checked: SA
Drawn: RG

Project Number: 654-16-032
Sheet Number: 8
Drawing Number: MH202

**Office of
Construction
and Facilities
Management**
UNIVERSITY OF NEVADA



BID DOCUMENTS (FINAL)

[illegible][illegible][illegible]

RECORDING LINE CABLES	EMPTY	TERMINAL BLOCK	EMPTY
1A-1B BATTERY CABLE #2	5 BATTERY FAN #1	12 COND. WTR PUMP C-2	15 FAN COL #2 (C-1)
1A-1B CHARGE SPARE	7 BATTERY FAN #2	13 COND. WTR PUMP 1 & 2	16 FAN COL #3 (C-1)
1A-1B FUEL WATER PUMP #1	8 BATTERY FAN #3	14 FUEL OIL PUMP 1 & 2	17 FAN COL #3 (C-1)
1A-1B FAN #1 (C-1)	9 CHMP #2	15 FUEL OIL PUMP 3	18 CHMP #3
3 EP #6		14 CHMP #4	

TE SIGNAL 570P	1 CIP-1 (COLLER #2)	5 SPACE	6 CIP-1 (COLLER #1)	7 CIP-2 (COLLER #2)	8 CIP-4	9 CIP-5
	2 CIP-3					
	3 CIP-1					
	4 CIP-2					

1 SPACE	2 SPACE	3 CT-1	4 CT-2	5 CT-3	6 CT-4
------------	------------	-----------	-----------	-----------	-----------

DATE	TYPE	LOCATION	ELECTRICAL RATING
1	1	1	1
2	2	2	2
3	3	3	3
4	4	4	4
5	5	5	5
6	6	6	6
7	7	7	7
8	8	8	8
9	9	9	9
10	10	10	10
11	11	11	11
12	12	12	12
13	13	13	13
14	14	14	14
15	15	15	15
16	16	16	16
17	17	17	17
18	18	18	18
19	19	19	19
20	20	20	20
21	21	21	21
22	22	22	22
23	23	23	23
24	24	24	24
25	25	25	25
26	26	26	26
27	27	27	27
28	28	28	28
29	29	29	29
30	30	30	30
31	31	31	31
32	32	32	32
33	33	33	33
34	34	34	34
35	35	35	35
36	36	36	36
37	37	37	37
38	38	38	38
39	39	39	39
40	40	40	40
41	41	41	41
42	42	42	42
43	43	43	43
44	44	44	44
45	45	45	45
46	46	46	46
47	47	47	47
48	48	48	48
49	49	49	49
50	50	50	50
51	51	51	51
52	52	52	52
53	53	53	53
54	54	54	54
55	55	55	55
56	56	56	56
57	57	57	57
58	58	58	58
59	59	59	59
60	60	60	60
61	61	61	61
62	62	62	62
63	63	63	63
64	64	64	64
65	65	65	65
66	66	66	66
67	67	67	67
68	68	68	68
69	69	69	69
70	70	70	70
71	71	71	71
72	72	72	72
73	73	73	73
74	74	74	74
75	75	75	75
76	76	76	76
77	77	77	77
78	78	78	78
79	79	79	79
80	80	80	80
81	81	81	81
82	82	82	82
83	83	83	83
84	84	84	84
85	85	85	85
86	86	86	86
87	87	87	87
88	88	88	88
89	89	89	89
90	90	90	90
91	91	91	91
92	92	92	92
93	93	93	93
94	94	94	94
95	95	95	95
96	96	96	96
97	97	97	97
98	98	98	98
99	99	99	99
100	100	100	100

[illegible]

MOTOR CONTROL CENTER:			IN WCCA		LOCATION:		MARELECTRICAL ROOM					
DFT #	EQUIPMENT IDENTIFICATION	VOLTAGE	PHASE	FLA	VA	SWITCH	FUSE	DISC.	STARTER	OPTIONS		(3) SERVICING DIAGRAM
										CONVERTER	PLUG	
1	3 PHASE, 480V, 1000 AMP, 100 HP, 1750 RPM, 10000 LB INCHES	480	3	200	10000	1000	100	100	100	100	100	100
2	3 PHASE, 480V, 1000 AMP, 100 HP, 1750 RPM, 10000 LB INCHES	480	3	200	10000	1000	100	100	100	100	100	100
3	3 PHASE, 480V, 1000 AMP, 100 HP, 1750 RPM, 10000 LB INCHES	480	3	200	10000	1000	100	100	100	100	100	100
4	3 PHASE, 480V, 1000 AMP, 100 HP, 1750 RPM, 10000 LB INCHES	480	3	200	10000	1000	100	100	100	100	100	100
5	3 PHASE, 480V, 1000 AMP, 100 HP, 1750 RPM, 10000 LB INCHES	480	3	200	10000	1000	100	100	100	100	100	100
6	3 PHASE, 480V, 1000 AMP, 100 HP, 1750 RPM, 10000 LB INCHES	480	3	200	10000	1000	100	100	100	100	100	100
7	3 PHASE, 480V, 1000 AMP, 100 HP, 1750 RPM, 10000 LB INCHES	480	3	200	10000	1000	100	100	100	100	100	100
8	3 PHASE, 480V, 1000 AMP, 100 HP, 1750 RPM, 10000 LB INCHES	480	3	200	10000	1000	100	100	100	100	100	100
9	3 PHASE, 480V, 1000 AMP, 100 HP, 1750 RPM, 10000 LB INCHES	480	3	200	10000	1000	100	100	100	100	100	100
10	3 PHASE, 480V, 1000 AMP, 100 HP, 1750 RPM, 10000 LB INCHES	480	3	200	10000	1000	100	100	100	100	100	100
11	3 PHASE, 480V, 1000 AMP, 100 HP, 1750 RPM, 10000 LB INCHES	480	3	200	10000	1000	100	100	100	100	100	100
12	3 PHASE, 480V, 1000 AMP, 100 HP, 1750 RPM, 10000 LB INCHES	480	3	200	10000	1000	100	100	100	100	100	100
13	3 PHASE, 480V, 1000 AMP, 100 HP, 1750 RPM, 10000 LB INCHES	480	3	200	10000	1000	100	100	100	100	100	100
14	3 PHASE, 480V, 1000 AMP, 100 HP, 1750 RPM, 10000 LB INCHES	480	3	200	10000	1000	100	100	100	100	100	100
15	3 PHASE, 480V, 1000 AMP, 100 HP, 1750 RPM, 10000 LB INCHES	480	3	200	10000	1000	100	100	100	100	100	100
16	3 PHASE, 480V, 1000 AMP, 100 HP, 1750 RPM, 10000 LB INCHES	480	3	200	10000	1000	100	100	100	100	100	100
17	3 PHASE, 480V, 1000 AMP, 100 HP, 1750 RPM, 10000 LB INCHES	480	3	200	10000	1000	100	100	100	100	100	100
18	3 PHASE, 480V, 1000 AMP, 100 HP, 1750 RPM, 10000 LB INCHES	480	3	200	10000	1000	100	100	100	100	100	100
19	3 PHASE, 480V, 1000 AMP, 100 HP, 1750 RPM, 10000 LB INCHES	480	3	200	10000	1000	100	100	100	100	100	100
20	3 PHASE, 480V, 1000 AMP, 100 HP, 1750 RPM, 10000 LB INCHES	480	3	200	10000	1000	100	100	100	100	100	100
21	3 PHASE, 480V, 1000 AMP, 100 HP, 1750 RPM, 10000 LB INCHES	480	3	200	10000	1000	100	100	100	100	100	100
22	3 PHASE, 480V, 1000 AMP, 100 HP, 1750 RPM, 10000 LB INCHES	480	3	200	10000	1000	100	100	100	100	100	100
23	3 PHASE, 480V, 1000 AMP, 100 HP, 1750 RPM, 10000 LB INCHES	480	3	200	10000	1000	100	100	100	100	100	100
24	3 PHASE, 480V, 1000 AMP, 100 HP, 1750 RPM, 10000 LB INCHES	480	3	200	10000	1000	100	100	100	100	100	100

TYPE	CHILLER	LOGIC	DESCRIPTION	TYPE
1	1	1	1	1
2	2	2	2	2
3	3	3	3	3
4	4	4	4	4
5	5	5	5	5
6	6	6	6	6
7	7	7	7	7
8	8	8	8	8
9	9	9	9	9
10	10	10	10	10
11	11	11	11	11
12	12	12	12	12
13	13	13	13	13
14	14	14	14	14
15	15	15	15	15
16	16	16	16	16
17	17	17	17	17
18	18	18	18	18
19	19	19	19	19
20	20	20	20	20
21	21	21	21	21
22	22	22	22	22
23	23	23	23	23
24	24	24	24	24
25	25	25	25	25
26	26	26	26	26
27	27	27	27	27
28	28	28	28	28
29	29	29	29	29
30	30	30	30	30
31	31	31	31	31
32	32	32	32	32
33	33	33	33	33
34	34	34	34	34
35	35	35	35	35
36	36	36	36	36
37	37	37	37	37
38	38	38	38	38
39	39	39	39	39
40	40	40	40	40
41	41	41	41	41
42	42	42	42	42
43	43	43	43	43
44	44	44	44	44
45	45	45	45	45
46	46	46	46	46
47	47	47	47	47
48	48	48	48	48
49	49	49	49	49
50	50	50	50	50
51	51	51	51	51
52	52	52	52	52
53	53	53	53	53
54	54	54	54	54
55	55	55	55	55
56	56	56	56	56
57	57	57	57	57
58	58	58	58	58
59	59	59	59	59
60	60	60	60	60
61	61	61	61	61
62	62	62	62	62
63	63	63	63	63
64	64	64	64	64
65	65	65	65	65
66	66	66	66	66
67	67	67	67	67
68	68	68	68	68
69	69	69	69	69
70	70	70	70	70
71	71	71	71	71
72	72	72	72	72
73	73	73	73	73
74	74	74	74	74
75	75	75	75	75
76	76	76	76	76
77	77	77	77	77
78	78	78	78	78
79	79	79	79	79
80	80	80	80	80
81	81	81	81	81
82	82	82	82	82
83	83	83	83	83
84	84	84	84	84
85	85	85	85	85
86	86	86	86	86
87	87	87	87	8

LINE #	DESCRIPTION	QTY	UNIT	IN DBB	LOCATION	ELECTRICAL ROOM
1	1. LIGHTS - 2000 WATT	2000	WATT	2000	2000	2000
2	2. LIGHTS - 2000 WATT	2000	WATT	2000	2000	2000
3	3. LIGHTS - 2000 WATT	2000	WATT	2000	2000	2000
4	4. LIGHTS - 2000 WATT	2000	WATT	2000	2000	2000
5	5. LIGHTS - 2000 WATT	2000	WATT	2000	2000	2000
6	6. LIGHTS - 2000 WATT	2000	WATT	2000	2000	2000
7	7. LIGHTS - 2000 WATT	2000	WATT	2000	2000	2000
8	8. LIGHTS - 2000 WATT	2000	WATT	2000	2000	2000
9	9. LIGHTS - 2000 WATT	2000	WATT	2000	2000	2000
10	10. LIGHTS - 2000 WATT	2000	WATT	2000	2000	2000
11	11. LIGHTS - 2000 WATT	2000	WATT	2000	2000	2000
12	12. LIGHTS - 2000 WATT	2000	WATT	2000	2000	2000
13	13. LIGHTS - 2000 WATT	2000	WATT	2000	2000	2000
14	14. LIGHTS - 2000 WATT	2000	WATT	2000	2000	2000
15	15. LIGHTS - 2000 WATT	2000	WATT	2000	2000	2000
16	16. LIGHTS - 2000 WATT	2000	WATT	2000	2000	2000
17	17. LIGHTS - 2000 WATT	2000	WATT	2000	2000	2000
18	18. LIGHTS - 2000 WATT	2000	WATT	2000	2000	2000
19	19. LIGHTS - 2000 WATT	2000	WATT	2000	2000	2000
20	20. LIGHTS - 2000 WATT	2000	WATT	2000	2000	2000
21	21. LIGHTS - 2000 WATT	2000	WATT	2000	2000	2000
22	22. LIGHTS - 2000 WATT	2000	WATT	2000	2000	2000
23	23. LIGHTS - 2000 WATT	2000	WATT	2000	2000	2000
24	24. LIGHTS - 2000 WATT	2000	WATT	2000	2000	2000
25	25. LIGHTS - 2000 WATT	2000	WATT	2000	2000	2000
26	26. LIGHTS - 2000 WATT	2000	WATT	2000	2000	2000
27	27. LIGHTS - 2000 WATT	2000	WATT	2000	2000	2000
28	28. LIGHTS - 2000 WATT	2000	WATT	2000	2000	2000
29	29. LIGHTS - 2000 WATT	2000	WATT	2000	2000	2000
30	30. LIGHTS - 2000 WATT	2000	WATT	2000	2000	2000
31	31. LIGHTS - 2000 WATT	2000	WATT	2000	2000	2000
32	32. LIGHTS - 2000 WATT	2000	WATT	2000	2000	2000
33	33. LIGHTS - 2000 WATT	2000	WATT	2000	2000	2000
34	34. LIGHTS - 2000 WATT	2000	WATT	2000	2000	2000
35	35. LIGHTS - 2000 WATT	2000	WATT	2000	2000	2000
36	36. LIGHTS - 2000 WATT	2000	WATT	2000	2000	2000
37	37. LIGHTS - 2000 WATT	2000	WATT	2000	2000	2000
38	38. LIGHTS - 2000 WATT	2000	WATT	2000	2000	2000
39	39. LIGHTS - 2000 WATT	2000	WATT	2000	2000	2000
40	40. LIGHTS - 2000 WATT	2000	WATT	2000	2000	2000
41	41. LIGHTS - 2000 WATT	2000	WATT	2000	2000	2000
42	42. LIGHTS - 2000 WATT	2000	WATT	2000	2000	2000
43	43. LIGHTS - 2000 WATT	2000	WATT	2000	2000	2000
44	44. LIGHTS - 2000 WATT	2000	WATT	2000	2000	2000
45	45. LIGHTS - 2000 WATT	2000	WATT	2000	2000	2000
46	46. LIGHTS - 2000 WATT	2000	WATT	2000	2000	2000
47	47. LIGHTS - 2000 WATT	2000	WATT	2000	2000	2000
48	48. LIGHTS - 2000 WATT	2000	WATT	2000	2000	2000
49	49. LIGHTS - 2000 WATT	2000	WATT	2000	2000	2000
50	50. LIGHTS - 2000 WATT	2000	WATT	2000	2000	2000
51	51. LIGHTS - 2000 WATT	2000	WATT	2000	2000	2000
52	52. LIGHTS - 2000 WATT	2000	WATT	2000	2000	2000
53	53. LIGHTS - 2000 WATT	2000	WATT	2000	2000	2000
54	54. LIGHTS - 2000 WATT	2000	WATT	2000	2000	2000
55	55. LIGHTS - 2000 WATT	2000	WATT	2000	2000	2000
56	56. LIGHTS - 2000 WATT	2000	WATT	2000	2000	2000
57	57. LIGHTS - 2000 WATT	2000	WATT	2000	2000	2000
58	58. LIGHTS - 2000 WATT	2000	WATT	2000	2000	2000
59	59. LIGHTS - 2000 WATT	2000	WATT	2000	2000	2000
60	60. LIGHTS - 2000 WATT	2000	WATT	2000	2000	2000
61	61. LIGHTS - 2000 WATT	2000	WATT	2000	2000	2000
62	62. LIGHTS - 2000 WATT	2000	WATT	2000	2000	2000
63	63. LIGHTS - 2000 WATT	2000	WATT	2000	2000	2000
64	64. LIGHTS - 2000 WATT	2000	WATT	2000	2000	2000
65	65. LIGHTS - 2000 WATT	2000	WATT	2000	2000	2000
66	66. LIGHTS - 2000 WATT	2000	WATT	2000	2000	2000
67	67. LIGHTS - 2000 WATT	2000	WATT	2000	2000	2000
68	68. LIGHTS - 2000 WATT	2000	WATT	2000	2000	2000
69	69. LIGHTS - 2000 WATT	2000	WATT	2000	2000	2000
70	70. LIGHTS - 2000 WATT	2000	WATT	2000	2000	2000
71	71. LIGHTS - 2000 WATT	2000	WATT	2000	2000	2000
72	72. LIGHTS - 2000 WATT	2000	WATT	2000	2000	2000
73	73. LIGHTS - 2000 WATT	2000	WATT	2000	2000	2000
74	74. LIGHTS - 2000 WATT	2000	WATT	2000	2000	2000
75	75. LIGHTS - 2000 WATT	2000	WATT	2000	2000	2000
76	76. LIGHTS - 2000 WATT	2000	WATT	2000	2000	2000
77	77. LIGHTS - 2000 WATT	2000	WATT	2000	2000	2000
78	78. LIGHTS - 2000 WATT	2000	WATT	2000	2000	2000
79	79. LIGHTS - 2000 WATT	2000	WATT	2000	2000	2000
80	80. LIGHTS - 2000 WATT	2000	WATT	2000	2000	2000
81	81. LIGHTS - 2000 WATT	2000	WATT	2000	2000	2000
82	82. LIGHTS - 2000 WATT	2000	WATT	2000	2000	2000
83	83. LIGHTS - 2000 WATT	2000	WATT	2000	2000	2000
84	84. LIGHTS - 2000 WATT	2000	WATT	2000	2000	2000
85	85. LIGHTS - 2000 WATT	2000	WATT	2000	2000	2000
86	86. LIGHTS - 2000 WATT	2000	WATT	2000	2000	2000
87	87. LIGHTS - 2000 WATT	2000	WATT	2000	2000	2000
88	88. LIGHTS - 2000 WATT	2000	WATT	2000	2000	2000
89	89. LIGHTS - 2000 WATT	2000	WATT	2000	2000	2000
90	90. LIGHTS - 2000 WATT	2000	WATT	2000	2000	2000
91	91. LIGHTS - 2000 WATT	2000	WATT	2000	2000	2000
92	92. LIGHTS - 2000 WATT	2000	WATT	2000	2000	2000
93	93. LIGHTS - 2000 WATT	2000	WATT	2000	2000	2000
94	94. LIGHTS - 2000 WATT	2000	WATT	2000	2000	2000
95	95. LIGHTS - 2000 WATT	2000	WATT	2000	2000	2000
96	96. LIGHTS - 2000 WATT	2000	WATT	2000	2000	2000
97	97. LIGHTS - 2000 WATT	2000	WATT	2000	2000	2000
98	98. LIGHTS - 2000 WATT	2000	WATT	2000	2000	2000
99	99. LIGHTS - 2000 WATT	2000	WATT	2000	2000	2000
100	100. LIGHTS - 2000 WATT	2000	WATT	2000	2000	2000
101	101. LIGHTS - 2000 WATT	2000	WATT	2000	2000	2000
102	102. LIGHTS - 2000 WATT	2000	WATT	2000	2000	2000
103	103. LIGHTS - 2000 WATT	2000	WATT	2000	2000	2000
104	104. LIGHTS - 2000 WATT	2000	WATT	2000	2000	2000
105	105. LIGHTS - 2000 WATT	2000	WATT	2000	2000	2000
106	106. LIGHTS - 2000 WATT	2000	WATT	2000	2000	2000
107	107. LIGHTS - 2000 WATT	2000	WATT	2000	2000	2000
108	108. LIGHTS - 2000 WATT	2000	WATT	2000	2000	2000
109	109. LIGHTS - 2000 WATT	2000	WATT	2000	2000	2000
110	110. LIGHTS - 2000 WATT	2000	WATT	2000	2000	2000
111	111. LIGHTS - 2000 WATT	2000	WATT	2000	2000	2000
112	112. LIGHTS - 2000 WATT	2000	WATT	2000	2000	2000
113	113. LIGHTS - 2000 WATT	2000	WATT	2000	2000	2000
114	114. LIGHTS - 2000 WATT	2000	WATT	2000	2000	2000
115	115. LIGHTS - 2000 WATT	2000	WATT	2000	2000	2000
116	116. LIGHTS - 2000 WATT	2000	WATT	2000	2000	2000
117	117. LIGHTS - 2000 WATT	2000	WATT	2000	2000	2000
118	118. LIGHTS - 2000 WATT	2000	WATT	2000	2000	2000
119	119. LIGHTS - 2000 WATT	2000	WATT	2000	2000	2000
120	120. LIGHTS - 2000 WATT	2000	WATT	2000	2000	2000
121	121. LIGHTS - 2000 WATT	2000	WATT	2000	2000	2000
122	122. LIGHTS - 2000 WATT	2000	WATT	2000	2000	2000
123	123. LIGHTS - 2000 WATT	2000	WATT	2000	2000	2000
124	124. LIGHTS - 2000 WATT	2000	WATT	2000	2000	2000
125	125. LIGHTS - 2000 WATT	2000	WATT	2000	2000	2000
126	126. LIGHTS - 2000 WATT	2000	WATT	2000	2000	2000
127	127. LIGHTS - 2000 WATT	2000	WATT	2000	2000	2000
128	128. LIGHTS - 2000 WATT	2000	WATT	2000	2000	2000
129	129. LIGHTS - 2000 WATT	2000	WATT	2000	2000	2000
130	130. LIGHTS - 2000 WATT	2000	WATT	2000	2000	2000
131	131. LIGHTS - 2000 WATT	2000	WATT	2000	2000	2000
132	132. LIGHTS - 2000 WATT	2000	WATT	2000	2000	2000
133	133. LIGHTS - 2000 WATT	2000	WATT	2000	2000	2000
134	134. LIGHTS - 2000 WATT	2000	WATT	2000	2000	2000
135	135. LIGHTS - 2000 WATT	2000	WATT	2000	2000	2000
136	136. LIGHTS - 2000 WATT	2000	WATT	2000	2000	2000
137	137. LIGHTS - 2000 WATT	2000	WATT	2000	2000	2000
138	138. LIGHTS - 2000 WATT	2000	WATT	2000	2000	2000
139	139. LIGHTS - 2000 WATT	2000	WATT	2000	2000	2000
140	140. LIGHTS - 2000 WATT	2000	WATT	2000	2000	2000
141	141. LIGHTS - 2000 WATT	2000	WATT	2000	2000	2000
142	142. LIGHTS - 2000 WATT	2000	WATT	2000	2000	2000
143	143. LIGHTS - 2000 WATT	2000	WATT	2000	2000	2000
144	144. LIGHTS - 2000 WATT	2000	WATT	2000	2000	2000
145	145. LIGHTS - 2000 WATT	2000	WATT	2000	2000	2000
146	146. LIGHTS - 2000 WATT	2000	WATT	2000	2000	2000
147	147. LIGHTS - 2000 WATT	2000	WATT	2000	2000	2000
148	148. LIGHTS - 2000 WATT	2000	WATT	2000	2000	2000
149	149. LIGHTS - 2000 WATT	2000	WATT	2000	2000	2000
150	150. LIGHTS - 2000 WATT	2000	WATT	2000	2000	2000
151	151. LIGHTS - 2000 WATT	2000	WATT	2000	2000	2000
152	152. LIGHTS - 2000 WATT	2000	WATT	2000	2000	2000
153	153. LIGHTS - 2000 WATT	2000	WATT	2000	2000	2000
154	154. LIGHTS - 2000 WATT	2000	WATT	2000	2000	2000
155	155. LIGHTS - 2000 WATT	2000	WATT	2000	2000	2000
156	156. LIGHTS - 2000 WATT	2000	WATT	2000	2000	2000
157	157. LIGHTS - 2000 WATT	2000	WATT	2000	2000	2000
158	158. LIGHTS - 2000 WATT	2000	WATT	2000	2000	2000
159	159. LIGHTS - 2000 WATT	2000	WATT	2000	2000	2000
160	160. LIGHTS - 2000 WATT	2000	WATT	2000	2000	2000
161	161. LIGHTS - 2000 WATT	2000	WATT	2000	2000	2000
162	162. LIGHTS - 2000 WATT	2000	WATT	2000	2000	2000
163	163. LIGHTS - 2000 WATT	2000	WATT	2000	2000	2000
164	164. LIGHTS - 2000 WATT	2000	WATT	2000	2000	2000
165	165. LIGHTS - 2000 WATT	2000	WATT	2000	2000	2000
166	166. LIGHTS - 2000 WATT	2000	WATT	2000	2000	2000
167	167. LIGHTS - 2000 WATT	2000	WATT	2000	2000	2000
168	168. LIGHTS - 2000 WATT	2000	WATT	2000	2000	2000
169	169. LIGHTS - 2000 WATT	2000	WATT	2000	2000	2000
170	170. LIGHTS - 2000 WATT	2000				

[illegible][illegible]

ARCHITECT/ENGINEERS
H+K ARCHITECTS
5405 Reno Corporate Dr., Ste. 100
Reno, Nevada 89511-2562
P 775-337-6640
F 775-337-6642
hkaarchitects.com

Bid Documents (Final)

Approved Project Number PANEL AND MCC SCHEDULES	Project Name RELOCATE BOILER PLANT ELECTRICAL ROOM		Project Number 854-16-432		Office of Construction and Facilities Management 
			Building Number 8		
			Drawing Number E004		
Approved Project Provider		Location 975 Krman Avenue, Reno, NV 89502			
		Date September 14, 2017	Checked JEG	Drawn TYP	