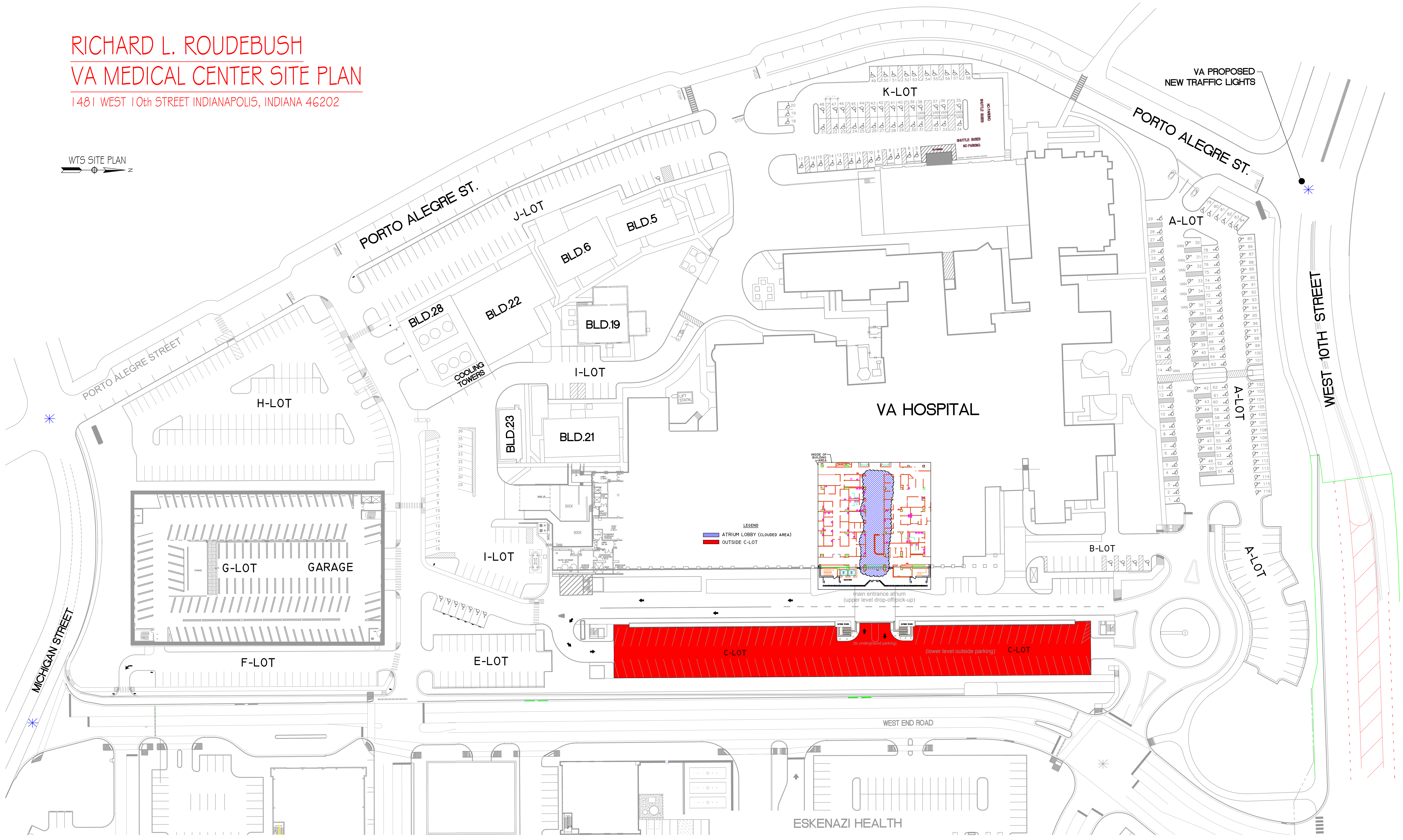



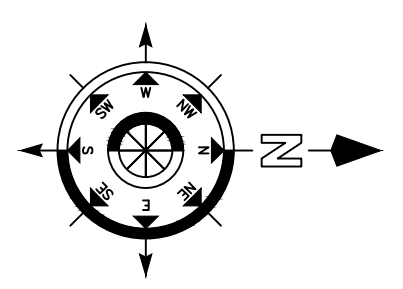
RICHARD L. ROUDEBUSH  
VA MEDICAL CENTER SITE PLAN  
1481 WEST 10th STREET INDIANAPOLIS, INDIANA 46202

WTS SITE PLAN

one eighth inch = one foot  
one quarter inch = one foot  
three eighths inch = one foot  
one half inch = one foot  
one half inch = one foot  
three quarters inch = one foot  
one inch = one foot  
one and one half inches = one foot  
two inches = one foot  
three inches = one foot



WEST 10th STREET CAMPUS VALET PARKING

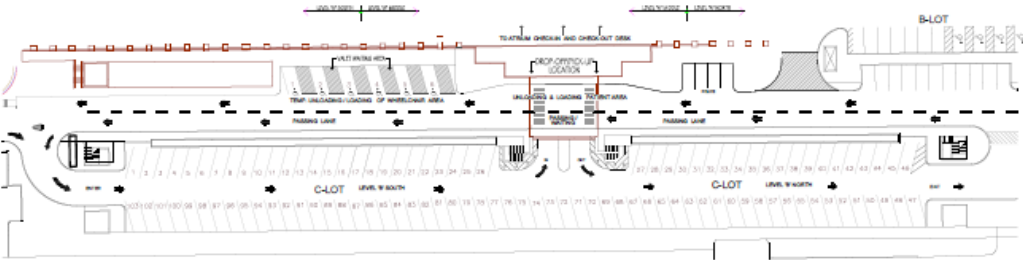
Revisions:	Date:	PLOT DATE:	ADDRESS:	NORTH REFERENCE	PROJECT ENGINEERS:	DRAWN BY:	Drawing Title	Project Title	Project Number	
		PLOT DATE:	Richard L. Roudebush VA Medical Center 1481 W. 10th St. Indianapolis, Indiana 46202		CHIEF OF ENGINEERING: SCOTT L. MORITZ ASSISTANT CHIEF OF ENG: WILLIAM R. JEROME	A. FERNANDEZ	ATRIUM LOBBY AREA C-LOT OUTSIDE PARKING	VA MEDICAL CENTER CUSTOMER VALET PARKING	PROPOSAL	
		CAD DRAWING FILE LOCATION:					Approved: Project Director	Location WEST TENTH STREET	Building Number BUILDING #1	
								Date JAN. 18, 2018 Checked Drawn AF	Drawing Number A-101 FY015 Dwg. 1 of 1	



RICHARD L. ROUDEBUSH  
VA MEDICAL CENTER SITE PLAN  
1481 WEST 10th STREET INDIANAPOLIS, INDIANA 46202

WTS SITE PLAN

A LEVEL  
103 PARKING SPACES



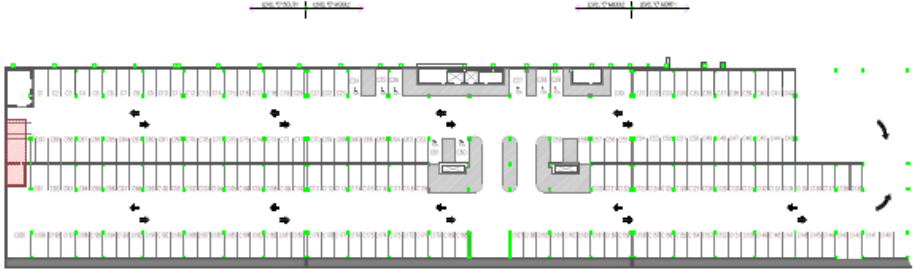
LEVEL 'A' PARKING LOT

B LEVEL  
205 PARKING SPACES



LEVEL 'B' PARKING LOT

C LEVEL  
200 PARKING SPACES



LEVEL 'C' PARKING LOT

TOTAL B + C = 405 SPACES  
TOTAL A + (B + C) = 508 SPACES

