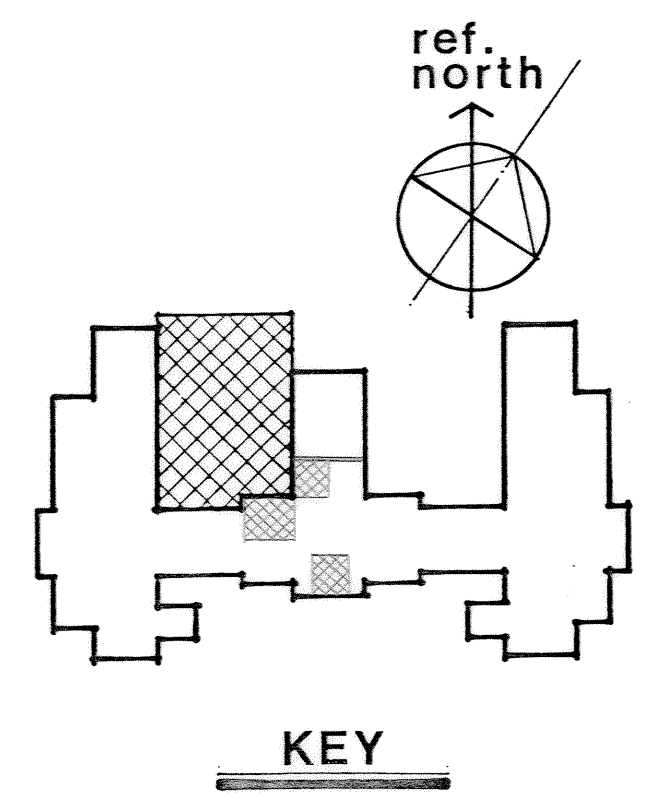


three inches = one foot
one and one half inches = one foot
one inch = one foot
three quarters inch = one foot
one half inch = one foot
three eighths inch = one foot
one quarter inch = one foot
one eighth inch = one foot



- NOTES
- ① FUTURE CCTV SYSTEM
 - ② FUTURE ALARM SYSTEM
 - ③ SEE MECHANICAL DRAWINGS FOR SIZE AND EXACT LOCATION OF ALL MECHANICAL EQUIPMENT.

SYSTEMS PLAN - THIRD FLOOR
1/8" = 1'-0"



AS-BUILT Revisions Date	Date	Laser Knight Hendrix & Guest, P.A. ARCHITECTS • HEALTH CARE PLANNERS 800 FIRST NATIONAL BANK • FORT SMITH, ARKANSAS	STATE OF ARKANSAS REGISTERED PROFESSIONAL ENGINEER No. 3906 Philip J. Hendrix	Drawing Title SYSTEMS PLAN - THIRD FLOOR		Project Title CLINICAL ADDITION		Date OCT. 1, 1981	
				Approved Project Director		Drawn A.T.		Project No. 564-019	
				Checked P.H.		Building Number 1		DRAWING NO. 1-E13	
						Location VAMC FAYETTEVILLE, ARKANSAS		Dwg. 15 Of 23	