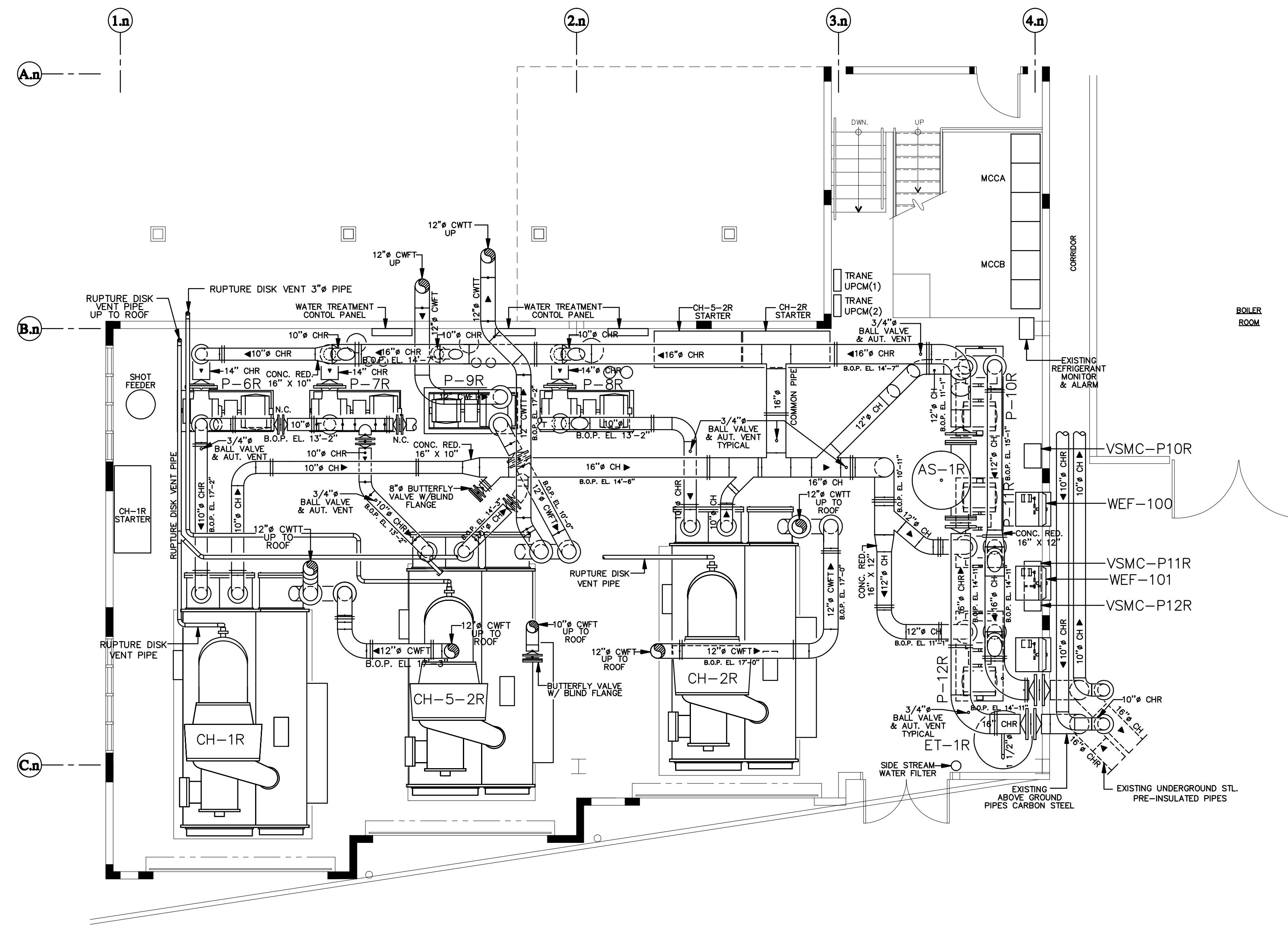
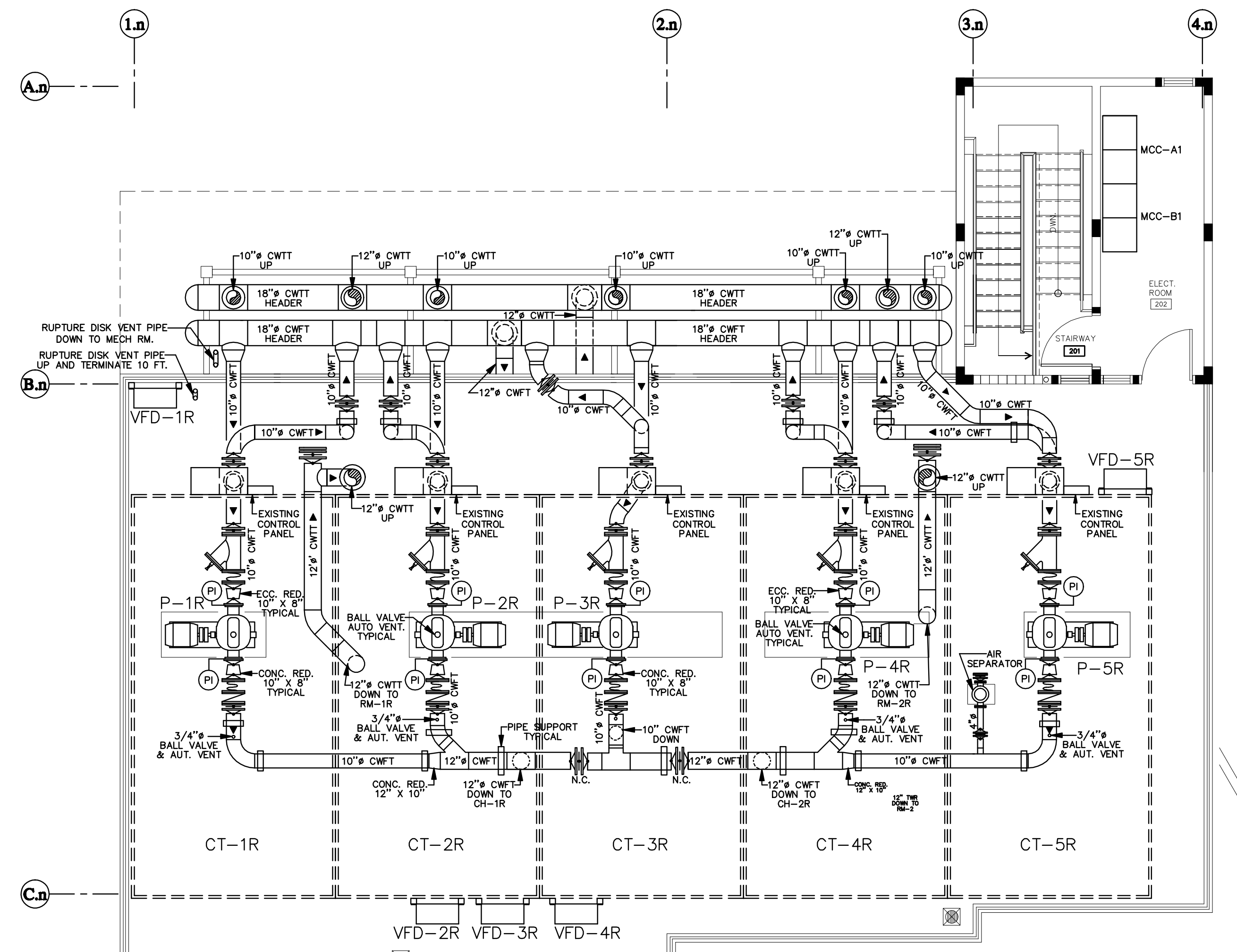


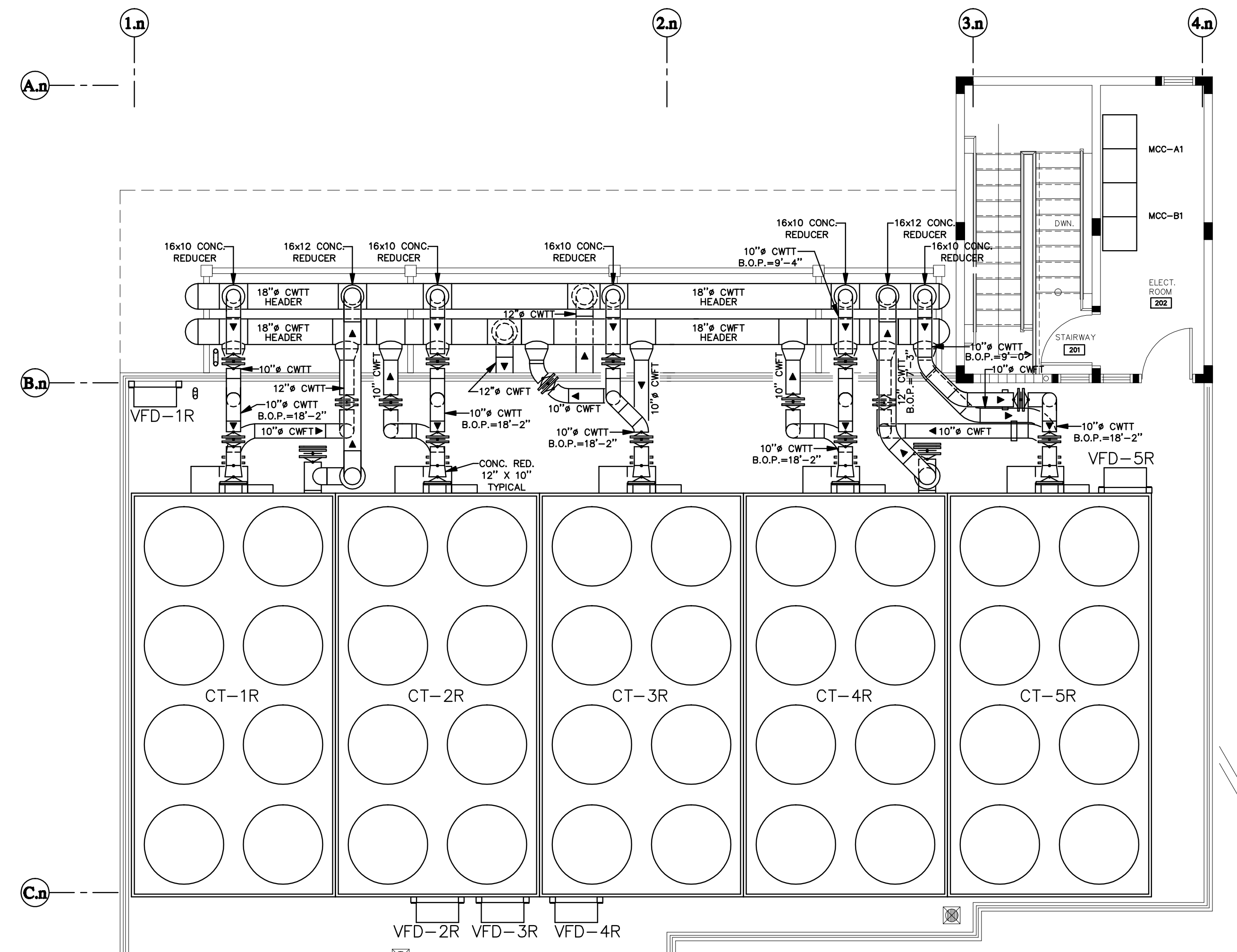
three eighths inch = one foot
 one eighth inch = one foot
 one quarter inch = one foot
 one half inch = one foot
 three quarters inch = one foot
 one inch = one foot
 one and one half inches = one foot
 two inches = one foot
 three inches = one foot
 four inches = one foot
 six inches = one foot
 one foot = one foot
 one and one half feet = one foot
 two feet = one foot
 three feet = one foot
 four feet = one foot
 five feet = one foot
 six feet = one foot
 seven feet = one foot
 eight feet = one foot
 nine feet = one foot
 ten feet = one foot
 eleven feet = one foot
 twelve feet = one foot



BLDG #1 ENLARGED MECHANICAL ROOM PIPING PLAN
 SCALE: 3/16"=1'-0"



BLDG #1 ENLARGED ROOF PIPING PLAN (LOWER LEVEL)
 SCALE: 3/16"=1'-0"



BLDG #1 ENLARGED ROOF PIPING PLAN (UPPER LEVEL)
 SCALE: 3/16"=1'-0"

JOSE L. GARCIA
 INGENIERO
 LICENCIADO
 U.C.#7079
 PUERTO RICO

PLAN NORTH
 TRUE NORTH

Revisions:	Date

CONSULTANTS:

**AS-BUILT SET
 100% COMPLETED**

ARCHITECT/ENGINEERS:

JOSE L. GARCIA
 354 Fortaleza Street Old San Juan, Puerto Rico 00901
 Tel. (787)724-4545 Fax. (787)725-8155
 Email: info@joselgarcia.com

Jose L. Garcia
 consulting engineers
 354 Fortaleza Street • San Juan, Puerto Rico

Drawing Title
BLDG #1 ENLARGED MECHANICAL ROOM PIPING PLAN

Approved: Project Director

Project Title
AS-BUILT DRAWING AND LABEL FOR ALL PLUMBING AND HVAC

Project Number
675-14-108

Building Number

Location
VACHS, SAN JUAN, PR

Date

Checked

Drawn

Drawing Number
MH2-131

Dwg. of

Office of Facilities Management

Department of Veterans Affairs