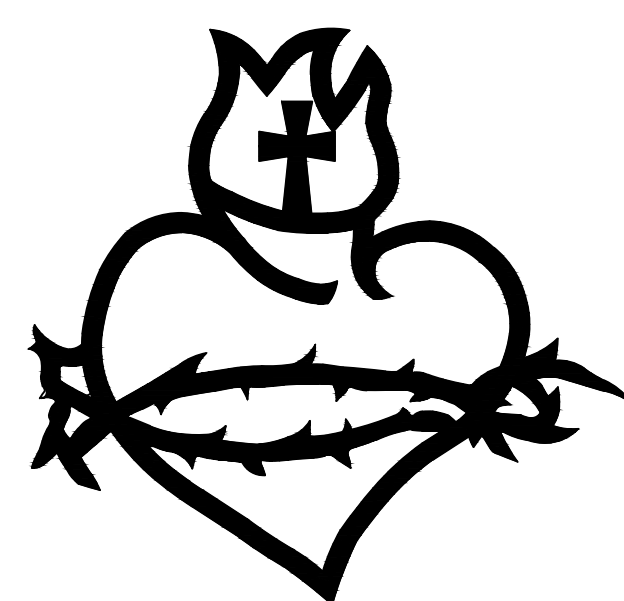
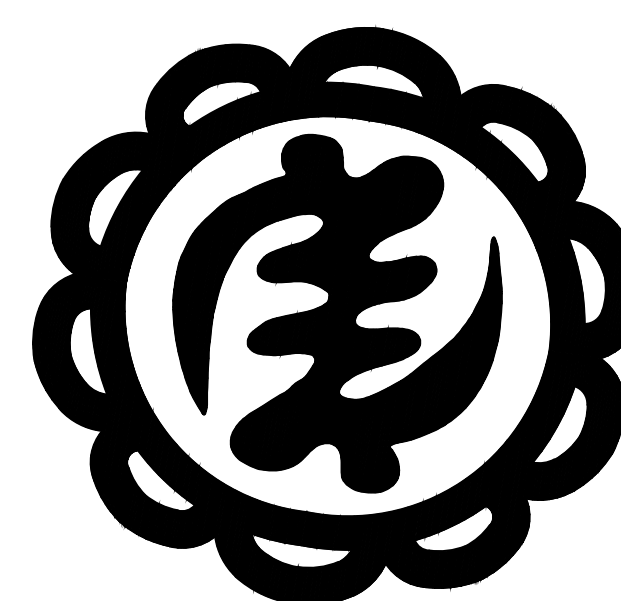


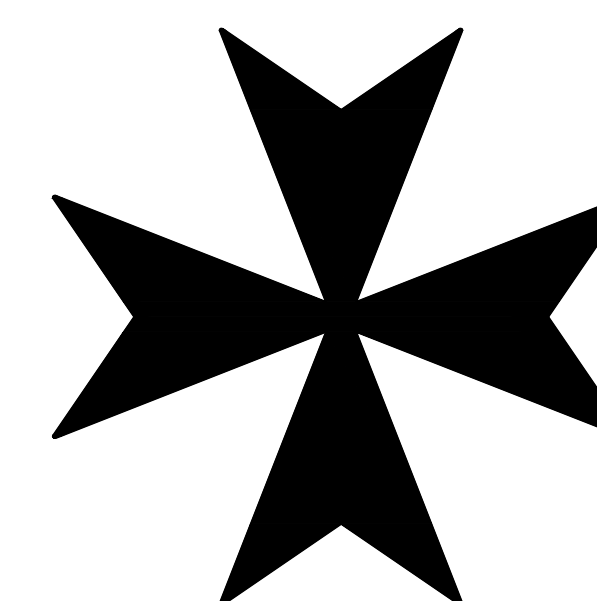
(61)
SHINTO



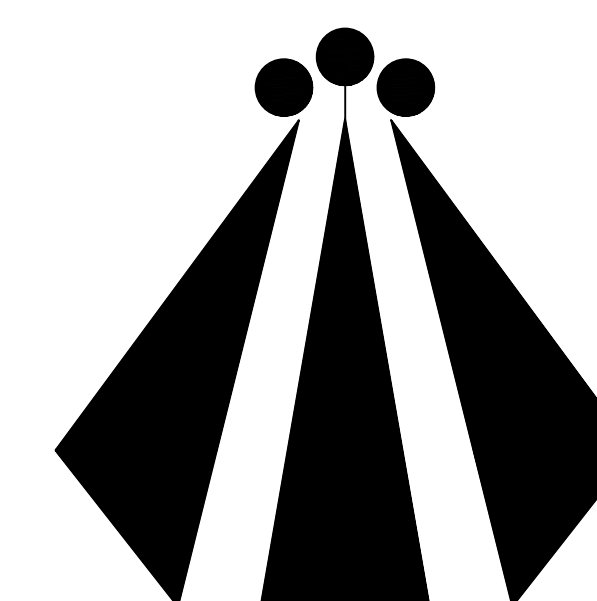
(62)
SACRED HEART



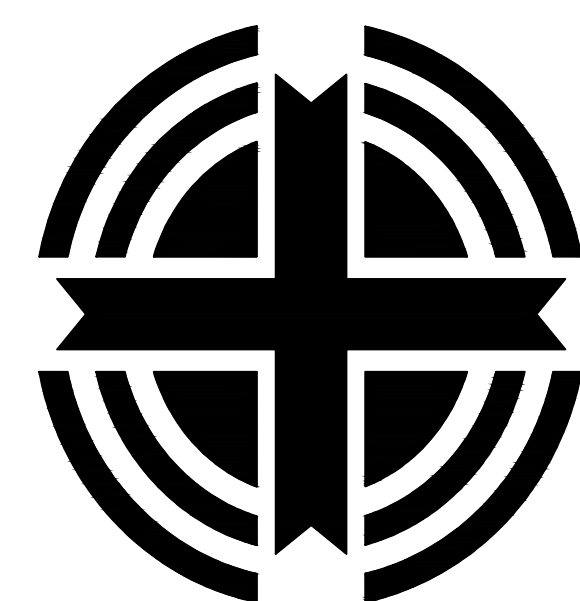
(63)
AFRICAN ANCESTRAL TRADITIONALIST



(64)
MALTESE CROSS



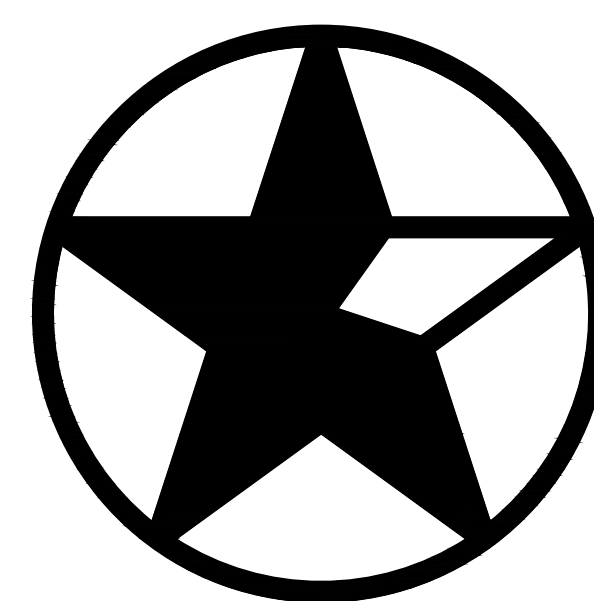
(65)
DRUID



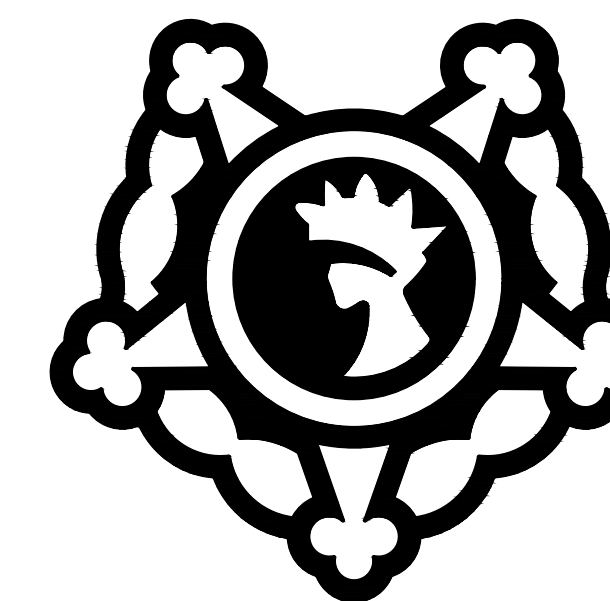
(66)
WISCONSIN EVANGELICAL LUTHERAN SYNOD



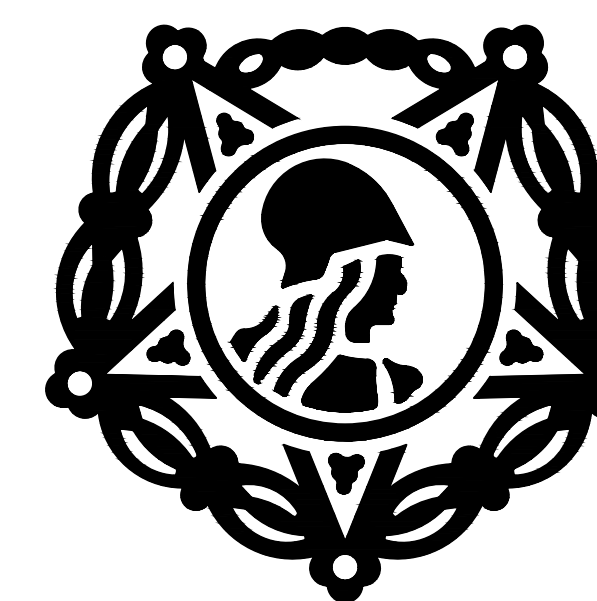
(67)
POLISH NATIONAL CATHOLIC CHURCH



(98)
ISLAMIC 5 POINTED STAR
NOTE: THE ABOVE EMBLEM IS COPYRIGHT PROTECTED AND CANNOT BE MADE AVAILABLE FOR PUBLIC OR PRIVATE USE.



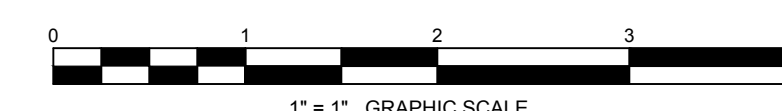
MOH US AIR FORCE



MOH US ARMY

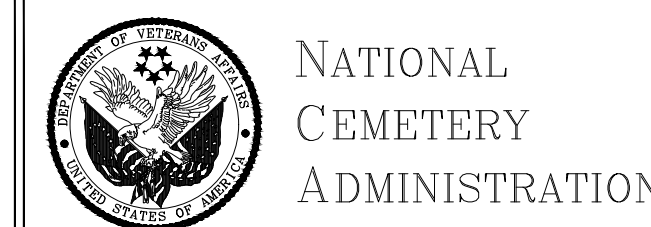


MOH US NAVY, US MARINE CORPS, AND US COAST GUARD



Revisions	Date	Revisions	Date
E	01-18-17		
D	07-02-15	H	12-09-17
B	07-01-13	G	11-24-17
...	06-05-03	F	01-23-17

GENERAL NOTES:
 1. ALL EMBLEMS WHEN USED ON STONE NICHE COVERS SHALL BE 2" AT THEIR LARGEST POINT TO POINT MEASUREMENT AND ALL OTHER AREAS IN EQUAL PROPORTION. ALL EMBLEMS ON FLAT MARKERS AND UPRIGHT HEADSTONES SHALL BE 3" AT THEIR LARGEST POINT TO POINT MEASUREMENT AND ALL OTHER AREAS SHALL BE IN EQUAL PROPORTION.
 2. INSCRIPTION DEPTHS ARE SHOWN IN THE TABLE AT THE UPPER LEFT CORNER OF DRAWING A-LFN&OC.
 3. ALL EMBLEMS ARE TO BE INCISED AS INDICATED BY SOLID LINE OR SOLID AREA. CLEAR AREAS TO REMAIN AS FINISHED SURFACE.
 4. THE CONTRACTOR MAY REDUCE THE EMBLEM'S DEPTH WHERE ELEMENTS OF THE DESIGN ARE SO DETAILED AS TO MAKE IT IMPRACTICAL TO ACHIEVE DEPTHS SHOWN IN THE TABLE OF DRAWING A-LFN&OC.



Drawing Title EMBLEMS		Project Title GOVERNMENT HEADSTONES AND MARKERS		AE Contractor PLANATE MANAGEMENT GROUP 3631 Ransom Place, Alexandria, VA 22306		Date DECEMBER 23, 2017	
Approved: Director, Memorial Programs Service Signed:		Marker Type ALL	Checked KEE/KS	Drawn MLT	Project No.		
Approved: Chief of Operations, Memorial Programs Service Signed:		Location A-EM-5.DWG 24" x 36" SHEET		Drawn JP/JN/IRN	Checked IRN	Approved CSJ	DRAWING NO. A-EM-5 Sheet 5 of 5