

1 REFLECTED CEILING DEMOLITION PLAN
1/4"=1'-0"

2 ELECTRICAL DEMOLITION PLAN
1/4"=1'-0"


(X) ELECTRICAL DEMOLITION NOTES

- EXISTING LIGHT FIXTURES TO BE RE-USED IN NEW SERVER AND UPS ROOMS. REMOVE LIGHT FIXTURES, CLEAN, AND RE-LAMP BEFORE RE-INSTALLING.
- CONTRACTOR TO VERIFY EXISTING CONDITIONS IN FIELD AND PROVIDE ADDITIONAL DEMOLITION WORK AS REQUIRED.

three inches = one foot
 one and one half inches = one foot
 one inch = one foot
 three quarters inch = one foot
 one half inch = one foot
 three eighths inch = one foot
 one quarter inch = one foot
 one eighth inch = one foot
 one sixteenth inch = one foot
 Q:\2016\pos\16030-00\elec\16030ED-101.dwg 5-04-17 12:46:47 PM brett

ISSUED FOR BID DOCUMENTS	05/05/17
100% CONSTRUCTION DOCUMENTS	02/06/17
95% CONSTRUCTION DOCUMENTS	09/28/16
65% CONSTRUCTION DOCUMENTS	09/02/16
Revisions:	Date


ENGINEERS + CONSULTANTS:



CONSOLIDATED CONSULTING ENGINEERS
www.cceeng.net

212 South Milwaukee Avenue
Wheeling, Illinois 60090
Phone: 847.215.0690
Fax: 847.215.8220

ARCHITECT + ENGINEERS:



BANCROFT ARCHITECTS + ENGINEERS
www.bancroft-ae.com

700 Nicholas Blvd., Suite 303
Elk Grove Village, IL 60007
T: 847.952.9362 F: 847.952.9403
www.bancroft-ae.com
Bancroft+AE Project No. 16-114

Drawing Title
FLOOR PLAN - ELECTRICAL DEMOLITION PLANS AND NOTES

Approved: Project Director

Project Title
VA - HINES, CONSOLIDATED MAIL OUTPATIENT PHARMACY NEW SERVER ROOM

Location
1ST AVENUE, HINES, IL 60141

Date
05/05/2017

Checked
DD

Drawn
BD / DD

VA CONTRACT NO. VA7975-16-J-0043

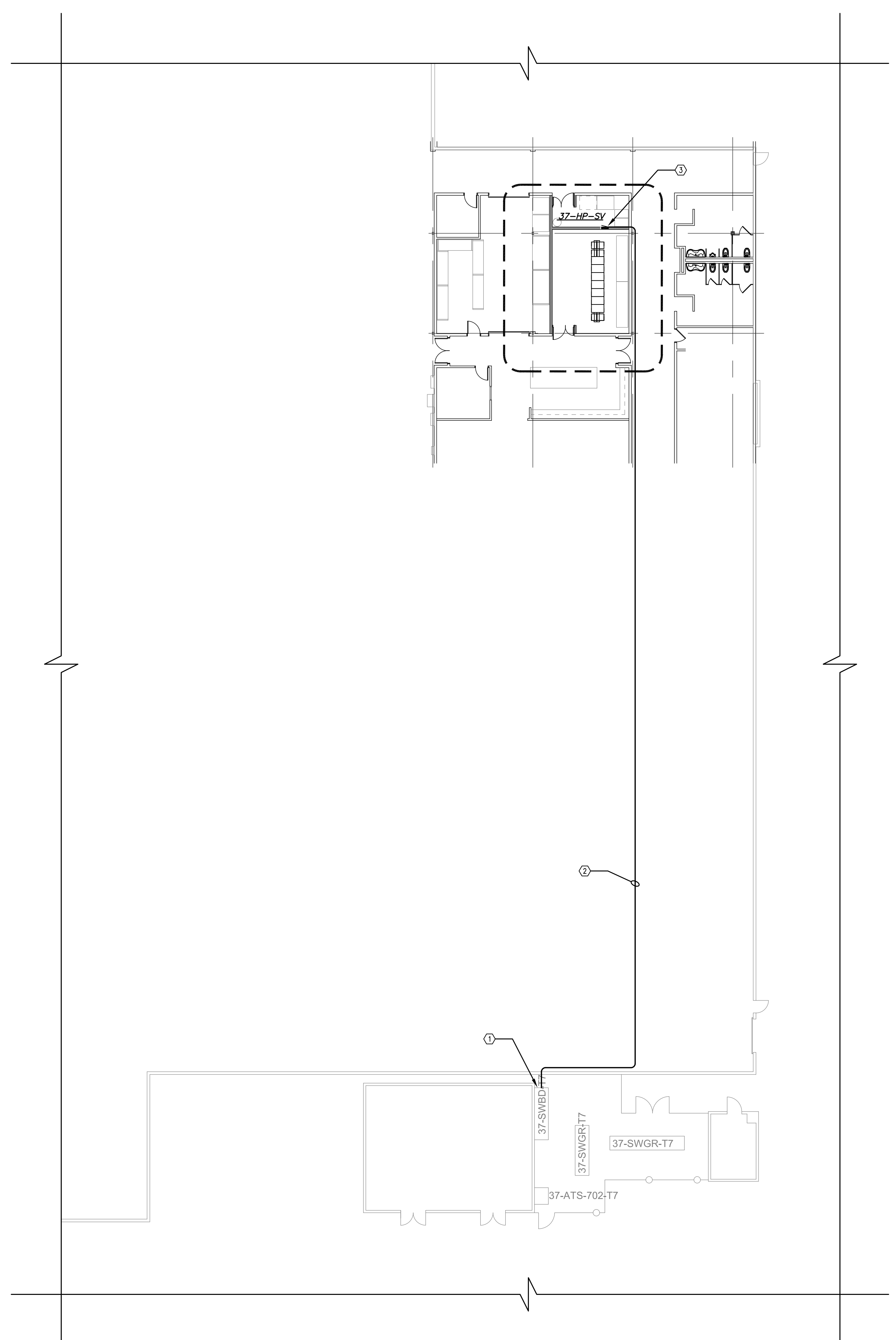
Project Number
796-16-018

Building Number
37

Drawing Number
ED-101

Office of Construction and Facilities Management
Department of Veterans Affairs

three inches = one foot
 one and one half inches = one foot
 one inch = one foot
 one quarter inch = one foot
 three quarters inch = one foot
 one half inch = one foot
 three eighths inch = one foot
 one eighth inch = one foot
 one quarter inch = one foot
 one eighth inch = one foot
 one sixteenth inch = one foot



PANELBOARD: 37-HP-SV

PANEL LOC. UPS ROOM C1061B PANEL TYPE NEMA 1, BOLT-ON, CB BUS SIZE 400A
 MAIN 400A MCB MOUNTING: RECESSED VOLTAGE: 277 / 480 V, 3 # 4 W FEED 4#600KCMIL, 1#2G, 3 1/2" EMT

CCT	C/B	DESCRIPTION	A # VA	B # VA	C # VA	DESCRIPTION	C/B	CCT	
1	110	CRAC-1	27000	9140		UPS SYSTEM UPS-1	200	2	
3	3	3#1, 1#6G, 1 1/2" EMT		27000	2770			4	
5	3	SPARE			27000	3#3/0, 1#6G, 2" EMT		6	
7	110	CRAC-2	27000	0		SPARE	200	8	
9	3	3#1, 1#6G, 1 1/2" EMT		27000	0			10	
11	3	SPARE			27000	0		12	
13	15	ACCU-1	1524	0		SPARE	200	14	
15	3	3#12, 1#12G, 3/4" EMT		1524	0			16	
17	3	SPARE			1524	0		18	
19	15	ACCU-2	1524	0		SPARE	200	20	
21	3	3#12, 1#12G, 3/4" EMT		1524	0			22	
23	3	SPARE			1524	0		24	
25	20	SPARE	0	0		SPARE	200	26	
27	20	SPARE	0	0		SPARE	200	28	
29	20	SPARE	0	0		SPARE	200	30	
31	20	SPARE	0	0		SPARE	200	32	
33	20	SPARE	0	0		SPARE	200	34	
35	20	SPARE	0	0		SPARE	200	36	
37	20	SPARE	0	0		SPARE	200	38	
39	20	SPARE	0	0		SPARE	200	40	
41	20	SPARE	0	0		SPARE	200	42	
TOTAL VA/PHASE			76,188	69,818	69,518				
TOTAL VA						215,524			
TOTAL AMPS						259.2			

14,000 AIC RATED

PANELBOARD: UPS-1

PANEL LOC. UPS ROOM C1061B PANEL TYPE NEMA 1, BOLT-ON, CB BUS SIZE 400A
 MAIN 400A MCB MOUNTING: INTEGRAL VOLTAGE: 120 / 208 V, 3 # 4 W FEED 4#500KCMIL, 1#2G, 3 1/2" EMT

CCT	C/B	DESCRIPTION	A # VA	B # VA	C # VA	DESCRIPTION	C/B	CCT	
1	30	EQUIPMENT RACK A1	2650	0		SPARE	200	2	
3	2	3#10, 1#10G, 3/4" EMT		2650	0			4	
5	30	EQUIPMENT RACK A2			2500	0	SPARE	6	
7	2	3#10, 1#10G, 3/4" EMT			2500	0		8	
9	30	EQUIPMENT RACK A3		1500	0		SPARE	10	
11	20	EQUIPMENT RACK A3			1500	0	SPARE	12	
13	30	EQUIPMENT RACK A4	2500	0		SPARE	200	14	
15	2	3#10, 1#10G, 3/4" EMT		2500	0			16	
17	20	EQUIPMENT RACK A4			2650	0	SPARE	18	
19	2	3#10, 1#10G, 3/4" EMT			2650	0		20	
21	30	EQUIPMENT RACK A5		1500	0		SPARE	22	
23	30	EQUIPMENT RACK B1			2600	0	SPARE	24	
25	2	3#10, 1#10G, 3/4" EMT			2600	0		26	
27	30	EQUIPMENT RACK B2		1500	0		SPARE	28	
29	30	EQUIPMENT RACK B2			1500	0	SPARE	30	
31	40	EQUIPMENT RACK B3	3120	0		SPARE	200	32	
33	2	3#8, 1#10G, 3/4" EMT		3120	0			34	
35	40	EQUIPMENT RACK B3			3120	0	SPARE	36	
37	2	3#8, 1#10G, 3/4" EMT			3120	0		38	
39	20	SPARE	0	0		SPARE	200	40	
41	20	SPARE	0	0		SPARE	200	42	
TOTAL VA/PHASE			19,140	12,770	12,470				
TOTAL VA						44,380			
TOTAL AMPS						123.2			

14,000 AIC RATED

PANELBOARD: UPS-1

PANEL LOC. UPS ROOM C1061B PANEL TYPE NEMA 1, BOLT-ON, CB BUS SIZE 400A
 MAIN 400A MCB MOUNTING: INTEGRAL VOLTAGE: 120 / 208 V, 3 # 4 W

CCT	C/B	DESCRIPTION	A # VA	B # VA	C # VA	DESCRIPTION	C/B	CCT	
43	20	SPARE	0	0		SPARE	200	44	
45	20	SPARE	0	0		SPARE	200	46	
47	20	SPARE	0	0		SPARE	200	48	
49	20	SPARE	0	0		SPARE	200	50	
51	20	SPARE	0	0		SPARE	200	52	
53	20	SPARE	0	0		SPARE	200	54	
55	20	SPARE	0	0		SPARE	200	56	
57	20	SPARE	0	0		SPARE	200	58	
59	20	SPARE	0	0		SPARE	200	60	
61	20	SPARE	0	0		SPARE	200	62	
63	20	SPARE	0	0		SPARE	200	64	
65	20	SPARE	0	0		SPARE	200	66	
67	20	SPARE	0	0		SPARE	200	68	
69	20	SPARE	0	0		SPARE	200	70	
71	20	SPARE	0	0		SPARE	200	72	
73	20	SPARE	0	0		SPARE	200	74	
75	20	SPARE	0	0		SPARE	200	76	
77	20	SPARE	0	0		SPARE	200	78	
79	20	SPARE	0	0		SPARE	200	80	
81	20	SPARE	0	0		SPARE	200	82	
83	20	SPARE	0	0		SPARE	200	84	
TOTAL VA/PHASE			-	-	-				
TOTAL VA						-			
TOTAL AMPS						-			

14,000 AIC RATED

- ELECTRICAL PLAN KEY NOTES**
- FURNISH AND INSTALL NEW 400AS/400AF IN EXISTING SERVICE SWITCHBOARD '37-SWBD-T7'. RECONFIGURE EXISTING 480V SERVICE SWITCHBOARD TO FEED NEW PANELBOARD '37-HP-SV'.
 - 4#600KCMIL, 1#2G, 3/4" IMC FEEDER FOR NEW PANELBOARD '37-HP-SV' FROM EXISTING SERVICE SWITCHBOARD '37-SWBD-T7'.
 - NEW PANELBOARD '37-HP-SV' 400A/480V/3#4W 14,000 AIC (42) POLE FED FROM EXISTING MAIN SWITCHBOARD '37-SWBD-T7'.

1 FLOOR PLAN - ELECTRICAL
 1/16"=1'-0"
 N

ISSUED FOR BID DOCUMENTS	05/05/17
100% CONSTRUCTION DOCUMENTS	02/06/17
95% CONSTRUCTION DOCUMENTS	09/28/16
65% CONSTRUCTION DOCUMENTS	09/02/16
Revisions:	Date

ENGINEERS + CONSULTANTS:

CONSOLIDATED CONSULTING ENGINEERS
 www.cceng.net

212 South Milwaukee Avenue
 Wheeling, Illinois 60090
 Phone: 847.215.0890
 Fax: 847.215.8220

ARCHITECT + ENGINEERS:

BANCROFT ARCHITECTS + ENGINEERS
 www.bancroft-ae.com

700 Nicholas Blvd., Suite 300
 Elk Grove Village, IL 60007
 T: 847.952.9362 F: 847.952.9403
 www.bancroft-ae.com
 Bancroft/AE Project No. 16-114

Drawing Title
PARTIAL OVERALL FLOOR PLAN ELECTRICAL PLANS, NOTES, AND SCHEDULES

Approved: Project Director

Project Title
VA - HINES, CONSOLIDATED MAIL OUTPATIENT PHARMACY NEW SERVER ROOM

Location
 1ST AVENUE, HINES, IL 60141

Date
 05/05/2017

Checked
 DD

Drawn
 BD / DD

VA CONTRACT NO. VA7975-16-J-0043

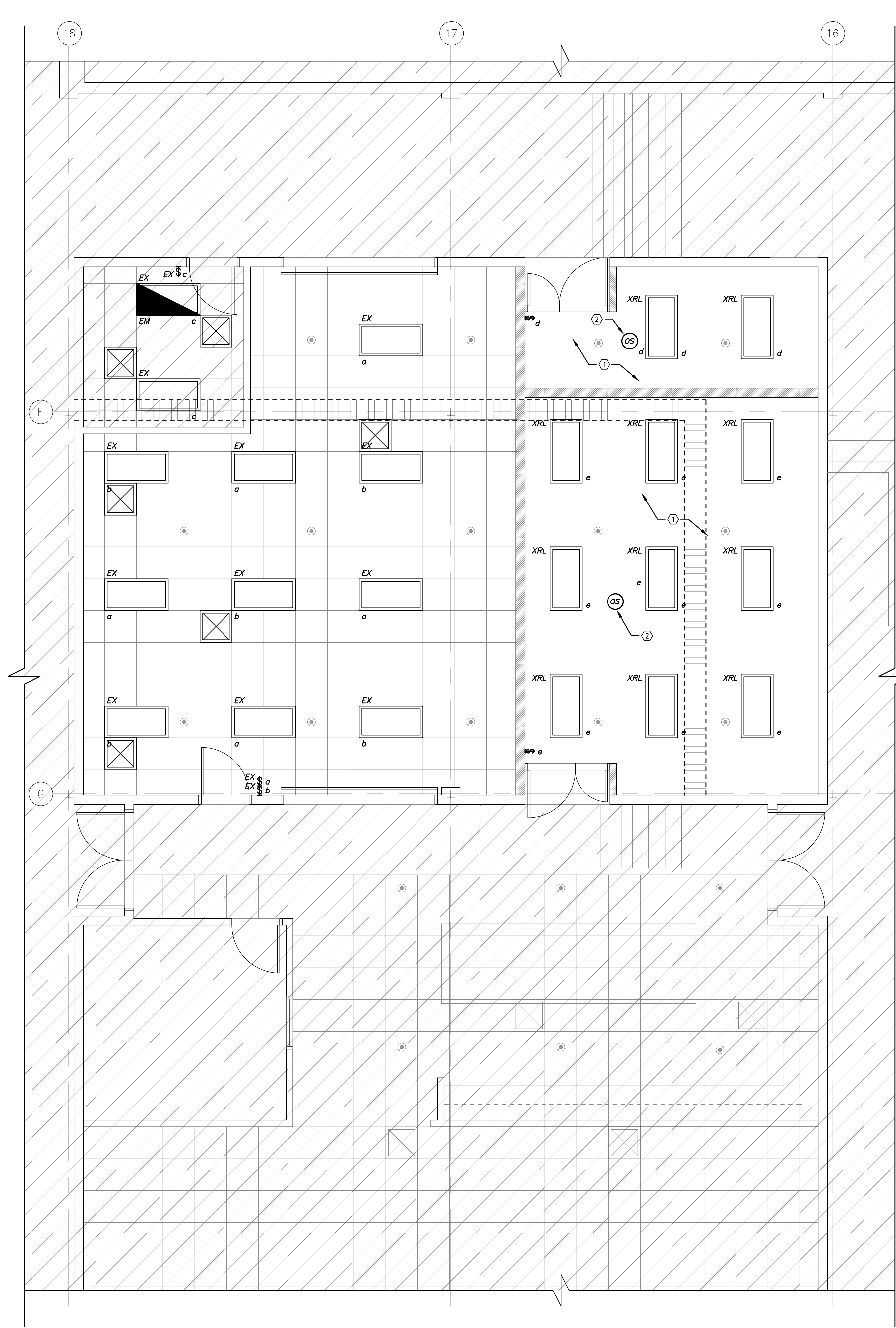
Project Number
 796-16-018

Building Number
 37

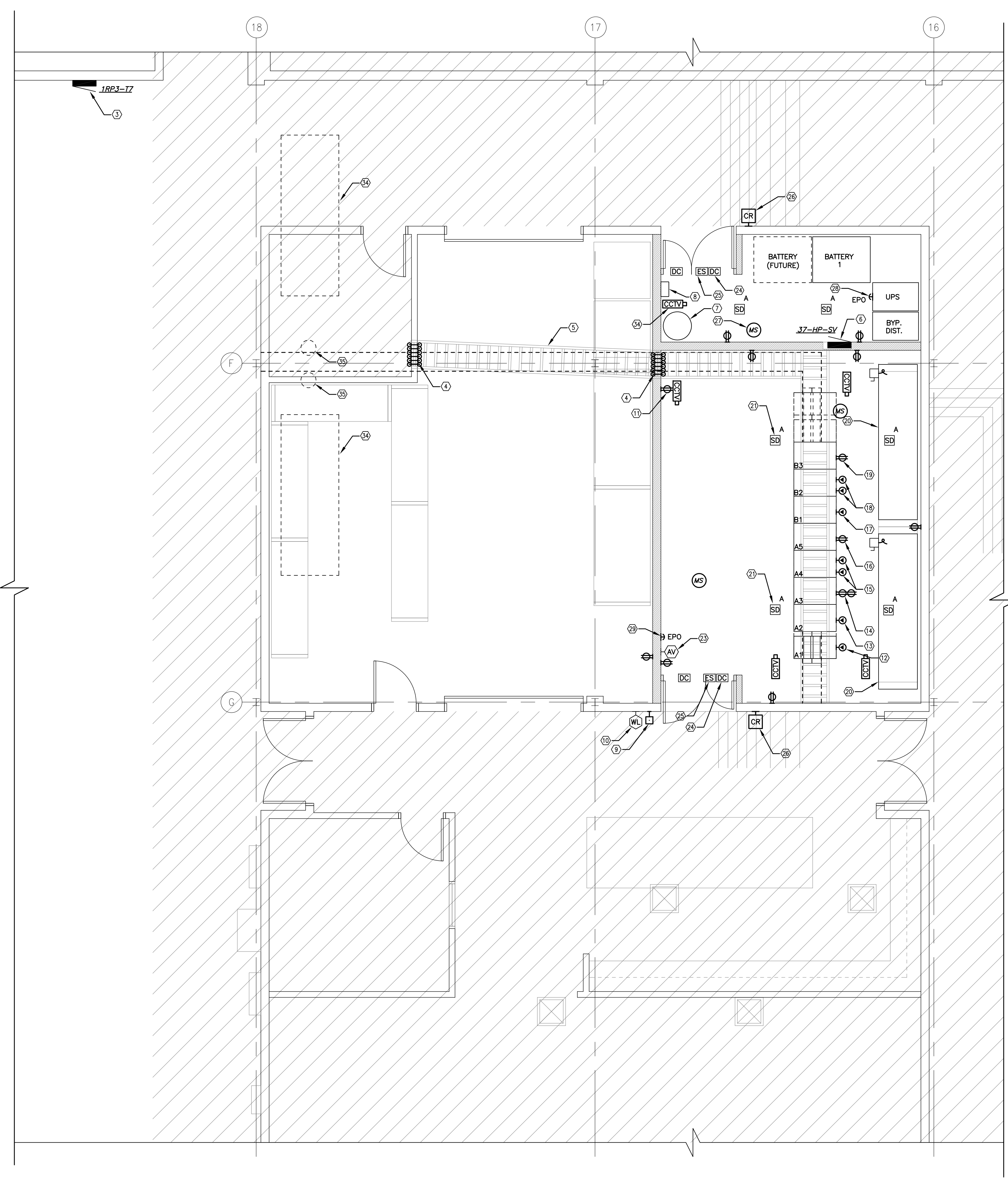
Drawing Number
E-100

Office of Construction and Facilities Management
 Department of Veterans Affairs

three inches = one foot
 one and one half inches = one foot
 one inch = one foot
 one inch = one foot
 three quarters inch = one foot
 one half inch = one foot
 three eighths inch = one foot
 one eighth inch = one foot
 one quarter inch = one foot
 one eighth inch = one foot
 one eighth inch = one foot



1 REFLECTED CEILING PLAN
 1/4"=1'-0"



2 ELECTRICAL PLAN
 1/4"=1'-0"

ELECTRICAL NOTES

- EXTEND EXISTING LIGHTING CIRCUITRY FOR NEW SERVER AND UPS ROOMS. PROVIDE 4-CORNER HANGERS FOR RELOCATED LIGHTS WITHOUT ACT GRID SUPPORTS.
- OCCUPANCY SENSOR. SENSORSWITCH #BRM-PDT-10-R-SERIES OR APPROVED EQUAL.
- EXISTING 120/208V PANELBOARD '1RP3-17' TO REMAIN. UTILIZE PANELBOARD FOR NEW 120/208V CIRCUITS AS REQUIRED. UTILIZE EXISTING SPARE BREAKERS AS REQUIRED.
- (6) 4" SPEED SLEEVES THROUGH WALL FOR SEALING AND FIRESTOPPING, COORDINATE PENETRATIONS WITH ARCHITECT.
- 24" HEAVY-DUTY ALUMINUM LADDER RACK, BLACK IN COLOR, AND ROD HUNG FROM STRUCTURE @ 12" ABOVE RACKS IN NEW SERVER ROOM AND 12" BELOW EXISTING DROP CEILING IN EXISTING STORAGE ROOM.
- NEW PANELBOARD '37-HP-SV' 400A/480V/3W/4W 14,000 AIC (42) POLE FED FROM EXISTING MAIN SWITCHBOARD. FURNISH AND INSTALL NEW 400AS/400AF AND 4#600KCMIL, 1#2G, 3#1 IMC FEEDER.
- FM200 SYSTEM STORAGE TANK, COORDINATE WITH SUPPRESSION COMPANY.
- FM200 SYSTEM CONTROL PANEL, COORDINATE WITH SUPPRESSION COMPANY.
- FM200 SYSTEM EMERGENCY STOP BUTTON, COORDINATE WITH SUPPRESSION COMPANY.
- FM200 SYSTEM PRE-RELEASE WARNING LIGHT, COORDINATE WITH SUPPRESSION COMPANY.
- 20A/120V GENERAL RECEPTACLE (TYPICAL)
- EQUIPMENT RACK A1: (1) PDU 30A/208V/5W TWIST-LOC PLUG. CIRCUITS 1/3 ON UPS-1 PANEL.
- EQUIPMENT RACK A2: (1) PDU 30A/208V/5W TWIST-LOC PLUG. CIRCUITS 5/7 ON UPS-1 PANEL.
- EQUIPMENT RACK A3: (2) 20A/120V/1P STANDARD CIRCUITS. CIRCUITS 9 & 11 ON UPS-1 PANEL.
- EQUIPMENT RACK A4: (2) PDU 30A/208V/5W TWIST-LOC PLUGS. CIRCUITS 13/15 & 17/19 ON UPS-1 PANEL.
- EQUIPMENT RACK A5: (1) 20A/120V/1P STANDARD CIRCUIT. CIRCUIT 21 ON UPS-1 PANEL.
- EQUIPMENT RACK B1: (1) PDU 30A/208V/5W TWIST-LOC PLUG. CIRCUITS 23/25 ON UPS-1 PANEL.
- EQUIPMENT RACK B2: (2) 20A/120V/1P STANDARD CIRCUITS. CIRCUITS 27 & 29 ON UPS-1 PANEL.
- EQUIPMENT RACK B3: (2) IEC 32A 3W PLUG CONNECTORS ON (2) 40A/208V/2P CIRCUIT BREAKERS. CIRCUITS 31/33 & 35/37 ON UPS-1 PANEL.
- 24-TON LIEBERT AIR CONDITIONING UNIT WITH INTEGRAL SMOKE DETECTOR. FIRE ALARM RELAY FOR SHUTDOWN AND DISCONNECT FURNISHED BY MECHANICAL AND INSTALLED BY ELECTRICAL. UNITS TO BE CIRCUITED TO NEW '37-HP-SV' 480V PANELBOARD.
- EARLY DETECTION SMOKE DETECTOR WITH AUXILIARY CONTACTS. ALL DETECTORS SHALL BE WIRED TO FM200 SYSTEM AND EXISTING FIRE ALARM SYSTEM, COORDINATE EXACT WITH MANUFACTURER AND PROVIDE ACCORDINGLY. (TYPICAL)
- EARLY DETECTION SMOKE DETECTOR WITH AUXILIARY CONTACTS. ALL DETECTORS SHALL BE WIRED TO FM200 SYSTEM AND EXISTING FIRE ALARM SYSTEM, COORDINATE EXACT WITH MANUFACTURER AND PROVIDE ACCORDINGLY. (TYPICAL)
- BUILDING FIRE ALARM AUDIO/VISUAL DEVICE CONNECTED TO EXISTING BUILDING FIRE ALARM SYSTEM.
- SECURITY SYSTEM DOOR CONTACT WIRED TO EXISTING CMOP SECURITY SYSTEM, V.I.F. (TYPICAL)
- SECURITY SYSTEM ELECTRIC DOOR STRIKE WIRED TO EXISTING CMOP SECURITY SYSTEM, V.I.F.
- SECURITY SYSTEM CARD READER AND KEYPAD WIRED TO EXISTING CMOP SECURITY SYSTEM, V.I.F.
- SECURITY SYSTEM MOTION SENSOR TIED TO ROOM SECURITY AND JOHNSON CONTROLS BUILDING SECURITY SYSTEM, COORDINATE COMPATIBILITY WITH MANUFACTURER. (TYPICAL)
- BUILT-IN EPO SHUTDOWN BUTTON ON UPS UNIT.
- REMOTE EPO SHUTDOWN BUTTON WIRED TO UPS UNIT.
- NOT USED.
- NOT USED.
- ALL SMOKE DETECTORS & FIRE ALARM DEVICES SHALL MATCH AND BE COMPATIBLE WITH EXISTING NOTIFIER FIRE ALARM SYSTEM, COORDINATE EXACT WITH MANUFACTURER AND PROVIDE ACCORDINGLY.
- COORDINATE RELOCATION OF ALL EXISTING IT RACKS WITH IT PERSONNEL AND PROVIDE POWER AND INSTALLATION AS REQUIRED.
- LOCATION OF ROOFTOP CONDENSING UNITS ACCU-1 AND ACCU-2 ABOVE. VERIFY EXACT LOCATION OF POWER CONNECTION ON EACH UNIT WITH MECHANICAL.
- LOCATION OF PIPE PORTALS TO BE UTILIZED FOR ROOF PENETRATIONS AND PIPING. VERIFY EXACT LOCATION IN FIELD AND UTILIZE ACCORDINGLY.

ISSUED FOR BID DOCUMENTS	05/05/17
100% CONSTRUCTION DOCUMENTS	02/06/17
95% CONSTRUCTION DOCUMENTS	09/28/16
65% CONSTRUCTION DOCUMENTS	09/02/16
Revisions:	Date

ENGINEERS + CONSULTANTS:

212 South Milwaukee Avenue
 Wheeling, Illinois 60090
 Phone: 847.215.0890
 Fax: 847.215.8220

ARCHITECT + ENGINEERS:

700 Nicholas Blvd., Suite 303
 Elk Grove Village, IL 60007
 T: 847.952.9362 F: 847.952.9403
 www.bancroft-ae.com
 Bancroft-AE Project No. 16-114

Drawing Title
FLOOR PLAN - ELECTRICAL PLANS AND NOTES

Approved Project Director

Project Title
VA - HINES, CONSOLIDATED MAIL OUTPATIENT PHARMACY NEW SERVER ROOM

Location
 1ST AVENUE, HINES, IL. 60141

Date
 05/05/2017

Checked
 DD

Drawn
 BD / DD

VA CONTRACT NO. VA7975-16-J-0043

Project Number
 796-16-018

Building Number
 37

Drawing Number
E-101

Office of Construction and Facilities Management
 Department of Veterans Affairs